

GAUTENG SMALLHOLDER

SEPTEMBER 2015

HOW TO MAKE YOUR PLOT PROFITABLE

ADVERTISING, EDITORIAL & CIRCULATION ENQUIRIES: PHONE 011 979-5088/076 476-7392

Take ONE! It's FREE!

 Find us on
Facebook

facebook.com/gautengsmallholder

IN THIS EDITION:

Grow Clivias for Profit

Grow Snails for Profit

How to set up a Plough

Your Soil ... Bee Forage

... and more...



**Order your
copy TODAY!**

See page 35 for details

More than 19 000 copies distributed monthly throughout Gauteng

www.sasmallholder.co.za

TEL: 011 822 8503

011 964 1323

FAX: 086 630 2616

CORNER GERALD & MAGIC STREETS,
BAPSFontein

26°00.138S; 028°24.832'E

e-mail: sales@gas2u.co.za

www.gas2u.co.za

GAS2U

Wholesalers of LPG and Appliances

Cadac Refills

Number 3 (1,3kg)

R40-95

Number 7 (3kg)

R94-50

Number 10 (4,5kg)

R141-75

Loadshedding Rescue Specials



Safegas
Cooker Top
only R99-00



Total
Gas Cartridge
190g
only R18-00



Safegas
100CP Lamp
only R175-00



Patio Heater
only R1 595-00



Cadac
Adventure Lantern
only R320-00

AIR PRODUCTS

**ACCREDITED
DISTRIBUTOR**

**Best prices for
industrial gases
and
welding consumables**



BOSCH



ALL PRICES INCLUDE VAT & ARE VALID WHILE STOCKS LAST

QUALIFIED TECHNICIANS - Gas Installations & Repairs - Certificates of Compliance We deliver throughout Gauteng. Call for delivery charges.

TARLTON NEW HOLLAND

A name you can trust



NEW HOLLAND TRACTORS
from 42kw - 400Kw



**Always in stock:
NEW HOLLAND
Cutters, Rakes,
Conditioners,
Square & Round
Balers**



*Excellent Value
Used Tractors
always in stock*



Ford 1610 & John Deere 1830 ...
just two of our many
used tractors now available

Full range of New Holland
Construction Machinery



NEW HOLLAND
B115B TLB



NEW HOLLAND

AGRICULTURE

SALES • SERVICE • SPARES • FIELD REPAIRS

Plot 173, Vlakplaas, N14, Tarlton Tel 079 207-0985

Cell: Dirk 082 415-0149

Herman 082 878-4295

www.tarltonnewholland.co.za

PUBLISHED BY

Bowford Publications (Pty) Ltd
Established 1985

(Reg No 2004/019727/07)

PO Box 14648, Bredell 1623

Tel: 011 979-5088

or 076 176-7392

Fax: 086 602-3882

e-mail: gautengsmallholder@gmail.com
website:

www.sasmallholder.co.za



facebook.com/gautengsmallholder

PUBLISHER & EDITOR

Pete Bower

RESEARCH EDITOR

Vanessa Bower

GRAPHIC DESIGN

Michelle Urquhart

ADVERTISEMENT SALES

Call 011 979-5088

ADVERTISING RATES

(All Rates Full Colour, incl VAT)

Full Page - R6800

Half Page - R4200

Quarter P - R2340

1/8 page - R1240

Smaller sizes: R95 per col cm
(Minimum size - 4 col cm)

(Black only: colour rate less 40%)

Booking discounts

(Payment lumpsum in advance)

3 insertions - less 10%

6 insertions - less 15%

(other payment and discount
options are available)

Circulation Area

More than 19 000 copies distributed
free through outlets in the Agricultural
Smallholding settlements of
Gauteng and adjoining provinces.
Also available by mail and online.

By Mail

To receive the *Smallholder* by mail
send us a supply of stamped, self-
addressed A4 envelopes.
Or, subscribe for only R210 per year.
See coupon in this edition.

Online

<http://www.sasmallholder.co.za>

Copyright

Title and contents protected by
copyright. No part of this publication
may be reproduced or stored in any
form whatsoever without the prior
written permission of the publisher.

Disclaimer

While every care is taken to ensure
the accuracy of the information in
this journal, neither the Editor nor the
Publisher can be held responsible
for damages or consequences of any
errors or omissions. The Publisher does
not stand warranty for the performance
of any article or service mentioned in
this journal, whether in an
advertisement or elsewhere.

FRONT COVER

Clivias being grown for sale under
nursery conditions. Learn how you can
make money from these favourites
on page 12

COMMENT, by Pete Bower

Self-sufficiency



From the sanctimonious democratic pedestal of the New South Africa it is perhaps a bit perverse to look back on the Seventies and Eighties with any great fondness but, in one respect at least, the hard-hitting sanctions era had an unintended beneficial consequence for South Africa: it made us self-sufficient in many respects. Uneconomical, yes, but self-sufficient nonetheless.

There can be no doubt that the sanctions years produced a burst of technological innovation in South African industry. Take our arms industry: cut off from purchases of armaments, aircraft and many other components that the rest of the world thought might have a military application, scientists and engineers rolled up their sleeves throughout South Africa and developed what was needed to keep the military supplied and effective. Armoured cars, military lorries, cannon, helicopters and much more rolled off production lines in their hundreds, often uneconomically, it must be said, but usually ideally-suited to the rigours of African bush warfare.

But civil life, and commerce and industry, also gained by the growth of a much more diverse manufacturing sector necessitated by the sanctions era. Because there was a threat that South African heavy transport might be denied engines for its vehicles, a large engine manufacturing plant was set up in a depressed area of the Western Cape named Atlantis, from where thousands of engines, built to only two standardised designs, powered every heavy vehicle imaginable, usually quite reliably, if not in the most modern fuel efficient manner and, because of their ubiquity, with generally readily-available spares. The beneficial effect of such employment on the community of Atlantis was well-recorded, with many families having been lifted out of grinding poverty to something resembling a decent middle-class lifestyle.

At that stage, South Africa also had a fledgling ship building industry, with quite sophisticated small ships being built at Durban, and luxury yachts at Cape Town. Only the latter remains, shipbuilding at Durban having been successfully killed off by high steel prices, high labour costs and a lack of government support.

At one time South Africa was the worldwide centre of a highly sophisticated stainless steel tank container manufacturing industry, which not only used South African-developed stainless steel in large quantities but which employed hundreds of highly-qualified specialist welders, not to mention ultrasonic weld inspectors and other highly trained personnel. Cheap Far East manufacture and a lack of government support saw that industry collapse locally.

South Africa's leadership in the field of narrow-gauge railway engineering was widely acknowledged. Spoornet's world-class Koedoespoort workshops and heavy engineering companies such as Giestro Wheels and Union Carriage & Wagon in Nigel built and maintained hundreds of locomotives, carriages and wagons. Now we can't even buy locos from overseas without getting the height specifications wrong.

Much has been written about the collapse of the clothing and textile industry. Nowadays underpants and socks come from China or India, jeans and shirts from Mauritius and Madagascar. And don't ask too many questions about the child labour or slave wages with which they were produced.

Last month I ordered a new pair of spectacles. They took a month to arrive because, I was told, South Africa no longer has a glass-spectacle lens manufacturing industry, this work now being outsourced to a factory in Germany.

Even in the field of foodstuffs surprisingly little is sourced or manufactured locally. Next time you buy a packet of herbs, or a tin of fish, or a packet of soup have a look for the country of origin. We eat very internationally, nowadays, as a nation.

It's true to say that South Africa, and the rest of Africa too, is falling prey to Chinese expansionism. With our economy collapsing we're ripe for the picking to become no more than a Chinese economic colony.

Meanwhile, on every street corner previously employed but now jobless people sit about aimlessly, eventually and inevitably turning to crime to put something on their tables. And those for whom the search for a job is just a bridge too far just go straight from their (shamefully inferior) schools to a life of crime.

To be sure, the development of the "global village" with its instant communication, modern logistics, and fast transport connections has made the "just in time" economy possible, and brought down prices of many items to the benefit of consumers.

But is the resultant death of the manufacturing sector a good thing, or a consequence we can live with? No, and it's going to come back to bite us.

POWER in your hands!



Diesel Engines



4HP
6HP
10HP
20HP

from R3 830.00

*VAT included

Petrol Engines



5,5HP
6,5HP
9HP
13HP
16HP
20HP

Horizontal Shaft
Reduction Boxes also available

from R1 495.00

*VAT included

Lawnmower Engines



Vertical Shaft
petrol engines
from 6,5HP
to 20HP

from R1 850.00

*VAT included

Solar Lights



R500.00
*VAT included

R140.00
*VAT included

Cultivators



different models

from R6 995.00

*VAT included

Pedestal-mounted Pulley Pumps



from R1 140.00

*VAT included

Water Pumps



*Plus inlet/outlet
hose AT COST with
each new pump*

Trash Pumps:

R4 350.00
*VAT included

Chemical Pumps:

R4 195.00
*VAT included

Standard Pumps: Petrol & Diesel

from R1 995.00
*VAT included

Diesel Generators



6.5KVA

from R13 500.00

*VAT included

Petrol Generators



3.5kVA R3 495.00
7.5kVA R7 995.00

*VAT included

SPECIAL

Power Sprayer



R3 595.00
*VAT included

Floor Saw Power Trowel



R11 500.00
*VAT included



R11 500.00
*VAT included

Tamping Rammer



Replacement Engine
for Rammers

R2 995.00
*VAT included

Petrol

R14 250.00
*VAT included

Concrete Mixer



R5 700.00
*VAT included

Compactors

different models

from R6 950.00
*VAT included



CM108G
6.5HP
180 litre

EAST RAND: 011 422 6354

PRETORIA: 012 320 4525

FULL SPARES BACKUP & SUPPORT

*Pictures for illustrative purposes only.
Actual products may differ. E&OE*

***All prices Cash & Collect
& INCLUDE VAT**

www.magnumpower.co.za



SOLARSERV
SOLAR POWER SOLUTIONS

*When we take over,
electricity bills & load shedding
take off!*

083 251 0304
083 292 4099
info@solarserv.co.za
www.solarserv.co.za

Special Offer:

5kVA system complete, including:

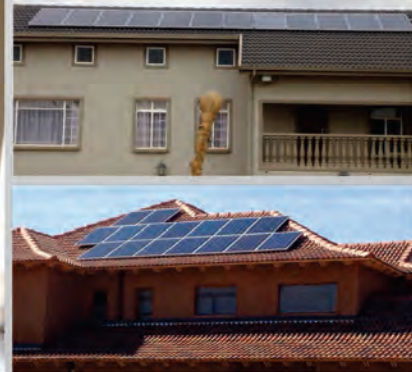
- 1 x 5kVA Axpert inverter
- 4 x 200AH AGM batteries
- 6 x 250W solar panels
- 1 x battery box
- Roof rails, brackets, cables & installation

R71 820 including VAT

This system will power the following in your home:

- Fridge & Freezer
- Television
- Decoder
- All home lights (inside & outside, LED or power saver)
- Kettle

1 year warranty on all installations & equipment



**Contact us for All
your solar needs**

(Geysers, borehole pumps, etc)

FINANCE AVAILABLE

PROUD MEMBERS OF

GREENFIN
FINANCIAL SERVICES

GREENFIN CAN FINANCE ALL
SUSTAINABLE ENERGY SOLUTIONS,
PRODUCTS AND INSTALLATIONS

sessa

SUSTAINABLE ENERGY SOCIETY
SOUTHERN AFRICA

FarmCity
farm-value in the city

OnLine
www.farmcity.co.za

A full range of garden irrigation solutions available

Valid until 30 September 2015



**PGP Gear
Driven Sprinkler**

- 4.9m to 14m
- Pop up rotor that easily adjusts from 40° - 360°
- 3/4" Inlet with a 5 year warranty period

R127⁹⁰



PSU Pop Up Spray Head

- 3m 360°
- Can easily be adjusted from 25° to 360°
- Ratchet feature allows easy spray direction adjustment
- Also available in 3.7m, 4.6m and 5.2m

R24⁹⁰



PGV Jar Top Globe Valve

- 25mm
- Jar-top lid makes it easy to open valve
- Heavy-duty non-corrosive plastic construction with replaceable low-voltage solenoid

R168⁹⁰



Jojo Slimline Tank

- 750 Litre
- Diameter: 760mm
- Height: 1850mm
- Lid: 450mm

R1899⁹⁰

Pressure Pump Unit

- 60 Litre 0.75kW 230V
- Installed in houses to provide or increase water pressure

R3399⁹⁰



**Indoor 4 Station XC
Controller**

- Independent dual watering programs
- Water-saving rain delay
- Built-in calendar

R753⁹⁰



We can also assist you in:

PAINT

TOOLS & HARDWARE

PESTICIDES & HERBICIDES

We beat any written quote on irrigation

Hunter
The Irrigation Innovators

Ruimsig c/o Hendrik Potgieter and Viljoen Street Tel: 011 662 1471 | Atterbury c/o Atterbury and Olympus Road Tel: 012 911 7090
Pierre van Ryneveld c/o Ryneveld and Pieter Botha Street Tel: 012 662 1710/25 | Montana c/o 1151 Tibouchina and Calliandra Street Tel: 012 524 9700



POOLWARE

PLUMBING

IRRIGATION & PUMPS

www.saplastikor.co.za

CENTURION: 20 Estcourt Avenue, Wierda Park

TEL: 012 653 1289/1090 FAX: 086 508 1029

PRETORIA NORTH: 256 Koos de la Rey Street

TEL: 012 546 5900/9044 FAX: 012 546 9195

THIS MONTH'S SPECIALS



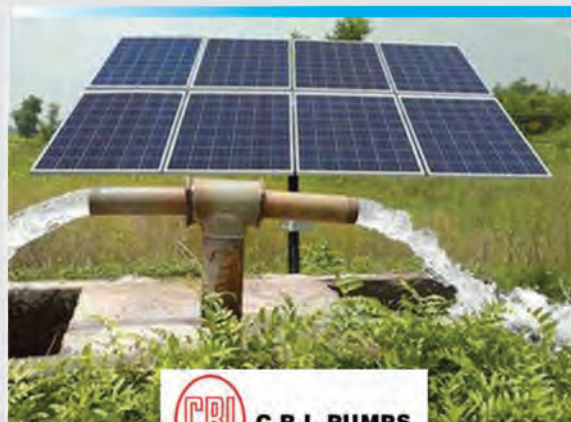
5 - Stage Reverse Osmosis Drinking Water Filter System

R1 599^{.00}



Reverse Osmosis Filters: Buy 3 filters (sediment + carbon block + GAC)

R99^{.00}



C.R.I. PUMPS

Solar borehole pump, motor, control box & solar panels (pipe, fittings & cable extra)

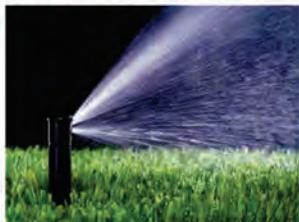
G3R-D/120, max 54m head, max 3 300ℓ/day

R11 900.00

G3R-F/230, max 69m head, max 5 000ℓ/day

R15 900.00

RAIN BIRD Uni-Spray



Pop-up sprinkler with 3m radius, 90°, 180° or 360° jet included

R29^{.00}



eco TANKS

Vertical Water Tanks

R1 889^{.00}

2 200 litre

R3 936^{.00}

5 000 litre



0,37kW Swimming Pool Pump

Suitable for small swimming pools and koi ponds

R1 149^{.00}

IMPORTERS OF **RAIN BIRD** PRODUCTS

Prices include VAT * While stocks last * Prices subject to change without prior notice * Illustrations may differ from products * T's & C's apply

Township teachers seek farming help

Five township maths teachers calling themselves the GreenAge Team are asking for help from Gauteng's farmers: they want advice and a helping hand to make their small farming venture successful.

Says group spokeswoman Mapaseka Vryman, "We are five young black ladies who are interested in farming on a small scale. We have a plot. We are undecided between animals and planting. "Would you consider inviting us to help on your farm for a

full day, say from 06:00 to the afternoon, for free so we can get a picture of reality?"

"We are interested in chickens, pigs, goats, cows and horses.

On the planting side, we are interested in vegetables, wheat, maize, root crops such

as beetroot and potatoes, and greens such as spinach etc.

"We do not know if this qualifies but we are interested in flowers, too.

"We would like to visit your farm on public holidays or on Sundays.

"We cannot visit on Saturdays because the five of us teach Maths in a township on Saturdays."

The group can be contacted through Vryman via her email address mapaseka.vryman@gmail.com

No shortage of AHS vaccine this year

Vaccine for African Horse Sickness is readily available this season and from now on is the time to be administering it.

Horse owners can buy the AHS vaccine kit from their local veterinarian or ask for them to be ordered if they are not kept in stock.

The *Smallholder's* August edition gave details on how the vaccine should be used

and the information is also available on www.sasmallholder.co.za. It is important to note that foals born of unvaccinated dams can be inoculated at any age but foals of immune dams should not be vaccinated until they are at least six to seven months old. Immunisation of mares should be avoided during the first three months of pregnancy. Annual immunisation is

strongly recommended.

According to Onderstepoort Biological Products, the vaccine's sole South African manufacturer, it takes two to three vaccinations for horses to become immune to all the serotypes in the vaccine. It is therefore important to combine vaccination with the control of the *Culicoides* midges which transmit the disease. Horses can be

Continued on page 6

BREDELL GAS & HARDWARE

✓ Hardware **Spring**
✓ Dry Cleaning **Fresh**
✓ TV & Video **GAS!**
Repairs

OPEN ON SUNDAYS 09:00-12:00

Bredell Shopping Centre
3rd Ave, Bredell Tel 011 396-1662

GREEN'S INDUSTRIAL SUPPLIES 20 JULBERT ST, BENROSE
MON - FRI 08:00 - 17:00
011 614 0295
076 667 5000

STIHL SALES & SERVICE

Service & Repairs TO ALL MAKES OF:

- MOWERS
- BRUSHCUTTERS
- GENERATORS
- PUMPS, ETC.

We stock a wide range of gardening tools & requisites

ZA-KIKKI
ARCHITECTURAL DESIGN & DRAWING OFFICE

IZAK TROLLIP
072 634 0439
izak@zakikki.co.za
www.zakikki.co.za

S.A.C.A.P Registered Architectural Professional

- Sectional Title Designs
- Full Title Designs
- Site Surveying
- Town Planning
- Structural & Civil Engineering
- Site Development Plans
- Site Supervision
- Steel Structures
- Brick Structures
- Wooden Structures

Manufacturers of All Animal Feeds & Ingredients

Direct to the Public

Veterinary Products
Equestrian Products
Dog Food
Bird Seed
Fencing
Irrigation

coming soon:

BROILER DAY 2015



watch this space for details

Head Office: Heidelberg Road, near Meyerton
016 366 1398 • 083 676 8607



HPF
HI PERFORMANCE FEEDS



GPS 26°33.461'S, 28°08.120'E

De Wildt reader wins Chelsea competition

The winner of the Hadeco-Garden World-Kirstenbosch - Chelsea Flower Show competition which we ran over the past two editions is Maria du Toit of De Wildt, northwest of Pretoria. She wins a copy of Hadeco's magnificent coffee-table manual on South African bulbs entitled simply *The Bulb Book*, plus a hamper of Hadeco bulbs for her summer garden and, to keep the sun off her while she plants her bulbs, a *Smallholder* cap.

The answer to our question "In which city is the Chelsea Flower Show held?" elicited a variety of answers. Some thought it was in Krugersdorp, others in Muldersdrift (a city?), others at Garden World, and others still simply said Chelsea.

If you visit the show, you will travel to the extensive park-

like grounds of the Royal Chelsea Hospital, which is in the Royal Borough of Chelsea (London's equivalent of a suburb). But you will have had to have travelled to London first. Thus, the answer is "London."

A recreation of the South African exhibit, traditionally designed by horticulturalists

attached to the SA National Botanical Gardens at Kirstenbosch, which is in Cape Town, is constructed at Garden World in Muldersdrift after the Chelsea show, as a focal point of Garden World's annual Spring Festival.

While it is an exact replica of the London design, the plant material used in the exhibit is fresh, ie not that which was used in London, and Garden World horticulturalists refresh the exhibit up to three times during the course of the six-week long festival.



Detail of this year's SA Chelsea exhibit at Garden World in Muldersdrift

Agrisolar
DIY solar geyser panels

- Multiple nozzle poly manifolds with 19mm black pipe
- Custom build size to your needs
- Full instructions
- Hail and frost proof
- Low pressure for farms, plots, factories etc

see May edition

Richard
072 010 5545

VACCINE

From page 5

protected from midge bites by stabling them from dusk to dawn, using insect repellents and keeping animals away from low-lying vleis or other surface water during the day.



Books & DVD's for Farmers
All prices exclude postage and delivery



Order at: accounts@kejafa.co.za
014 577 8006
www.kejafa.co.za

Successful Pig Production DVD R 250.00
Modern Pig Production R 600.00
Raising Pigs R 320.00
Successful Meat Goat Production DVD R 250.00
Raising Meat Goats R 320.00
Raising Dairy Goats R 320.00
Boer met Kleinvee R 350.00
Raising Sheep R 320.00
Small-Scale Livestock Farming R 395.00

Small Stock Management R 230.00
Agricultural Management Practice R 190.00
Successful Hydroponic Production DVD R 350.00
Successful Broiler Production DVD R 250.00
Guide to Poultry Production R 95.00
Raising Chickens R 320.00
Training Horses R 320.00
Raising Horses R 320.00
Equine Vet Manual R 575.00

Free delivery in Gauteng area

CITILEC
Electrical & Lighting Wholesalers
011 334 2737
246 Main St, City & Suburban
Johannesburg
security@citilec.co.za

PARADOX SECURITY SYSTEMS **COMMAX** **OPTEX** **DSC** **Texecom**
© Tyco International Company Designed to Perform

NEW!!

Security Equipment @ Wholesale Prices!

- Electric Fence Equipment
- Security, Surveillance & Access Control
- Electrical Wholesalers & Lighting Specialists

Best Advice from QUALIFIED Staff!

Great Launch Specials!!

We Deliver!

SENTRY **HIKVISION** **TAKEX** **LUNELL** **alhua**
AUTOMATICALLY THE BETTER CHOICE TECHNOLOGY

bpt

CAME

CENTURION
THE AUTOMATIC CHOICE

All prices Vat inclusive E&OE - Generator power - No outages

GROENVOER

Quality Animal Feeds



Since 1970

CONVENIENT ONE-STOP COUNTRY SHOPPING

Feed • Vet Products • Saddlery • Gumpoles • Buckets • Bins • Brooms • Chicken feeders & drinkers
Fodder • Eragrostis • Lucerne • Oat hay • Teff • Country Markets • Groom Training • Farm stall delights



GROENVOER Premium Quality Animal Feed

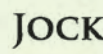
1 - 7 September
National Arbour Week

Remember to collect your
FREE indigenous tree sapling
when you buy from us
this month !

- Always Available, Always Freshly Mixed
- Formulated for South African conditions
- Organic preservatives
- Direct from factory to feed room

Horse Feed is our Speciality

Along with our best-selling Groenvoer feeds for Horses, Cattle, Sheep, Pigs & Poultry, we also stock the following brands:



SEPTEMBER 2015 SPECIALS!

Super White Mealie Meal 12.5kg **R72** - Save R15

(Plus get a 1kg Mini Pack FREE)

Racumin Rat Poison blocks 85g **R42** - Save R10

Pressure Sprayer 16 litre **R350** - Save R50

Metal Drums **R270** - Save R90

210lt - rat-proof - especially for winter

Eqvalan Gold Horse Dewormer **R70** - Save R30

Firebeaters **R110** - Save R25



PROUDLY PRESENTING THE SA GRASS ROLL SAVER!

- Recoup cost within months
- Comfortably holds 1.2m grass roll
- Only needs two people for easy loading
- Long Lasting
- Money saving
- Galvanised

SA PATENT
NO. 2012/05600
SA REGISTERED DESIGN
NO. A2012/01178 & F2012/01177
Infringers will be Prosecuted



"Since I started to put the grass in the SA Grass Roll Saver my cattle have stayed nice and fat, even in winter. The cattle also enjoy eating from it. This invention has saved me a lot of money."

BETHUEL NGAKO - MPHUMULANGA



2 DAY GROOM TRAINING COURSE

6 & 7 October 2015 • 8.30am - 3.30pm

Only R1250! (Groenvoer feed clients pay a discounted rate of R1090)

The course covers basic feeding, grooming, tack and vet care. Invest in your groom and enjoy a more efficiently managed yard.

Limited places available! Book Now

IN ASSOCIATION
WITH



Address: Olifantsfontein Rd (R562), Midrand, Gauteng, SA



SADDLERY SAVERS

Winter is here!

Blanket washing
& saddlery repairs
Quick, thorough
& Inexpensive



ORDER TODAY!

Speak to: Cathy, Irene, Penny,
Jenny & Philenie



011 314 1211 082 545 9277
011 314 1212 076 451 7771
011 314 1156 076 451 7799



email: groenvoer@mweb.co.za
web: www.groenvoer.co.za

BEEKEEPING

Bee forage week to raise awareness

The second National Bee Foraging Week will run from 19-26 September 2015. The purpose is to raise awareness of what bees need to maintain healthy, strong

swarms.

As smallholders plan and implement their spring and summer planting, they should also be consciously planting vegetables, crops, trees and flowers that are enjoyed by bees.

"A lack of good quality and variety of forage can lead to unhealthy honeybee colonies that are more susceptible to disturbances such as pests and diseases. "Weakened honeybee colonies are less effective in pollinating crops," says Mike Allsopp of the Agricultural Research Council's Honeybee Research Section.

Natural forage sources are threatened by urban sprawl and thoughtless use of chemicals.

Honeybees need access to a variety of flowering plants to provide food for their colonies

at different times of the year. A study by the SA National Biodiversity Institute (Sanbi) reveals that eucalyptus trees, certain crop species such as sunflowers, canola, citrus and lucerne, as well as indigenous trees and shrubs, flowering

plants and wild flowers are critically important for honeybees to build strong colonies.

But honeybees are crucial to food security as well, because they are vital as crop

Continued on page 10

TRACTOR BROKEN?

We repair & service all agricultural tractors, implements & balers



WHERE POSSIBLE, WE COME TO YOU!

ALLISON'S FIELD SERVICES

William 083 309-7701
Fax 0866 19 11 91

Honey labelling regs announced

Beekeepers who intend to sell their honey need to know how to comply with newly-published regulations concerning the grading, labelling and packaging of their honey. A two-page leaflet published by the directorate of food safety and quality assurance of the Dept of Agriculture, Forestry & Fisheries gives an outline of the requirements which, in addition to listing the things a honey-producer MUST do to ensure compli-

ance, also gives examples of things he or she can't do, such as describing honey that has been adulterated with sugar, syrup of other substances as honey. The full regulations and requirements can be downloaded from the Daff website at <http://www.daff.gov.za/daffweb3/Branches/Agricultural-Production-Health-Food-Safety/Food-Safety-Quality-Assurance/Local-and-Import-Regulations/Processed-products-honey-regulation>.

Quantum Feeds



Supplier of:

- Quality Eragrostis & Teff
- A-grade & B-grade
- Round & Square bales
- Lucern
- Straw
- Shavings

Delivery available in Benoni, Boschkop and surrounding areas

Tian Botha

082 784 8804

quantumfeeds5@gmail.com

Portion 35 Kameelzynkraal, Bronkhorstspuit

RIPPLE CREEK
NURSERY & ORGANICS

Weed Free Organic Compost
Lawn Dressing • Garden Soil
Kikuyu Instant Lawn • Potting Soil

Veg & Flower Seedlings, Trees, Fruit Trees, Shrubs, Roses, etc.

Now available: BUILDING MATERIAL: sand, stone, cement

SPRING SPECIALS:
Compost/Lawndressing bags: Buy 10 get 1 FREE!
Selected Trees: less 20%
Selected Plants: less 50%

Open - Sunday to Friday / Closed - Saturday
Tel: 011 965 1777 or 082 875 9507
78 Elm Road, Benoni Agricultural Holdings

SPARTS MOTOR SPARES

For all your automotive spares, call on us TODAY!



PO Box 9311
Brentwood Park
1505

Cor High Road & Stanley Road
Pomona

email spartsc@web.co.za

Tel 011 967-1295
011 967-2151
Fax 011 963-0473
086 218 4686

VISA MasterCard

Tel: 087 351 4871/2/3
011 917 3528
011 892 2979
Fax: 011 917 3547
xishare@mweb.co.za

[illegible]

Prices and discounts are subject to change without prior notification. Please confirm prices with each order.
Disclaimer: Galvanising contains zinc. Customers use galvanised products for livestock and humans entirely at their own risk.

GARDEN WORLD FESTIVAL



Left:
Traditional
herbs in an
African
setting.
Right: Flowers
and pathways
Below left:
Vibrant patio
colours.



Once again this year at Garden World's Spring festival, professional landscapers, students and schoolchildren alike all worked their magic with their inspirational show garden designs, packed with ideas for gardeners in spaces ranging from townhouse patios to the largest estate.

In much evidence this year was the use of vegetables and herbs, acknowledging the growing trend among homeowners to grow some of their own food.



BEEKEEPING

From page 8

pollinators.

As current natural habitat and forage resources dwindle, there is an urgent need to protect and maintain existing bee-friendly vegetation by planting more bee-friendly plants (as long as they are appropriate to the specific localities to prevent hybridisation or invasions).

Smallholders and farmers alike should practise bee-friendly agricultural processes, particularly in relation to agro-chemicals.

Honeybees spend many days

in crop land (pollinating or foraging), and are therefore very susceptible to use of pesticides. Agro-chemicals have been found by some studies to be one of the leading causes of honeybee deaths. Common insecticides such as neonicotinoids and pyrethroids have been shown to negatively affect learning behaviour, foraging activities and nest site orientation by honeybees.

Those who have important bee-forage crops on their lands should consider allowing access to

beekeepers in a controlled manner, obviously communicating with the beekeepers about any agro-chemical regime on the land.

And gardeners should also consider planting complementary crops (such as lavender or basil) or rotate land with legume crops that are important bee-forage resources.

One can also find out which weeds are attractive to bees (eg, wild radish, cosmos, etc), so that some can be left for the bees.

GROW GARLIC

.co.za



Grow your own garlic
egyptian pink seed

locally grown in the Magaliesburg valley
082 561 0013 www.growgarlic.co.za

ORIGINAL A-Frame house
COMPLETE YOUR HOUSE
WITH OUR STEEL STRUCTURE

House Structure
~210m²
3 Bedrooms
& 2 Bathrooms

House Structure, erected

Cottage Structure, erected

House/Cottage Structure Erected includes:

- Steel frame erected
- Chromadek roof sheeting & insulation
- 2 roof windows (extra windows possible)
- Upstairs wooden floor & balcony (house structure only)
- Wooden stairs (with house structure only)
- Building plan supplied

• Price excludes: Building work, Plumbing, Electrical & Final Finishes

ERECTED R189 600.00
(excluding VAT)

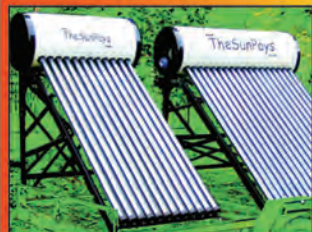
ERECTED R89 800.00
(excluding VAT)

STEEL FRAMES
GEBOUW | FABRIEKE EN PAKHUISE | ONTWERP EN KONSTRUKSIE

Pieter 082 497 4247 | www.aframe.co.za
Tel: 011 675 7491 | Fax: 086 610 4461

COMPLETE YOUR
COTTAGE WITH OUR 2 bedrooms
STEEL STRUCTURE & 1 bathroom

www.TheSunPays.co.za



Low Cost Solar Geysers

Low Pressure 100L

from **R2 595**

We quote TANK volumes,
WITHOUT tube
volumes!

High Pressure up to 300L
@R13 995

Now available: Solar Power!

Pure Sine Wave
Inverter/Charger

Solar Panels from R10.90 per Watt



Full specifications
on website

4kVA inverter
from R12 495.00



082 515 1655 | 012 734 0915 | sunpays@hotmail.com

Full pricelist on website | Prices include VAT | Free delivery 100km from Cullinan

GARDEN WORLD FESTIVAL



Left: Imaginative use of veld grasses
Below: Farmkids School's garden



Above:
Oh-Beehive! by Unisa horticultural students highlighted bees, honeycomb and bee products, and used plants that attract pollinator insects



Vegetables and flowers mixed in an ornamental setting.



Joburg Parks highlighted the Zoo, with a city skyline as backdrop.



Ponds and water features are always on show



Indigenous flora from the Cape



Detail from the Chelsea exhibit: Flowers that South Africa gave the world, among them beautiful proteas.



EAGLE STEEL PROJECTS

YOUR ONE STOP CONSTRUCTION SOLUTION



WAREHOUSES | FACTORIES | SHOPPING COMPLEXES | PEDESTRIAN BRIDGES
OVERHEAD CRANES | MEZZANINE FLOORS | MULTI-STOREY BUILDINGS
EXTENSIONS TO EXISTING BUILDINGS

Design, Fabrication & Erection of High Quality Steel Structures

FOR PROFESSIONAL SERVICE IN:

Manufacturing of various steel structures

Construction of steel structures including foundations, erection of steel and sheeting

Transport of manufactured structures to sites countrywide

Design of steel structures and building

Export Project Management

Piet: 083 298 7386 | Renier: 083 412 2173 | Pieter: 083 306 5667

Tel: 011 826 4683 | Fax: 011 826 4787

renier@eaglesteel.co.za | www.eaglesteel.co.za

Countrywide!



IN THE GARDEN

How to grow clivias for profit

Growing clivia on a large scale can be very profitable because of the demand for orange and yellow clivia by local nurseries, says Pretoria clivia breeder, Pikkie Strumpher.

With larger nurseries ordering up to 3 000 plants at a time, Strumpher's advice to potential growers is to consider growing no fewer than 5 000 to 10 000 plants a year. One must also keep in mind that clivias take four to five years to flower from seed.

Even though the price per plant is generally low, higher volumes make it a cost-effective crop to produce because seed, potting soil, and fertiliser can be bought in bulk.

Set up costs should not be excessive either as clivia can be grown under an 80% shade cloth structure. A reliable water supply is, however, essential.

Orange and yellow clivia are the most cost-efficient, as the more unusual colours are more expensive to produce, says Strumpher.

The demand for orange and yellow clivias, and to a lesser extent peaches, is the highest but the demand for unusual colours is limited. Smaller numbers of the more unusual colours can be grown for the private market.

Smallholders interested in finding out more about

growing clivias can visit the Jo'burg Clivia Club's annual show at Garden World on September 12 and 13 in Muldersdrift.

Exhibitors range from hobbyists to serious growers, offering a range and diversity of clivias for sale. This is the clivia enthusiast's best opportunity to add new

colours to their collection and also find good bargains.

On Saturday the hours will be 08h00 until 17h00 and Sunday 08h00 until 15h00. The entry fee is R15 for people over twelve years of age.

Call Glynn Middlewick at 082 650-1463 or e-mail gcmidd@hmweb.co.za.



Orange and yellow clivias are the most popular.

Captain Beefheart
PETS FOOD
TOP QUALITY PURE FROZEN MINCE
BEEF OR CHICKEN
DELIVERED TO YOUR DOOR
Minimum Order for Home Deliveries: 1 case = 16kg
072 838-0552
ronaldc@polka.co.za



Wastewater Treatment Systems

- Does your septic tank smell?
- Has your French drain failed? ... Again?
- Are you polluting the neighbour's borehole water?
- Are you compliant with the National Water Act?
- Would you really like to reuse your water?

Each Scarab system...

- is designed to comply with the National Water Act
- is simple to install, maintain and operate
- requires no chemicals (Ozone optional)
- uses minimal power
- is almost maintenance free
- produces clear and odourless water
- is modular to suit new loadings
- is sized from the single house to large estate



The Scarab system is:

- Featured in the Dept of Water Affairs best practices guideline policy
- Listed as a top 100 SA company for its technology in 2004, 2005 and 2006, and for receiving the Bio2Biz award in 2006.
- A preferred supplier to the Dept of Health - Rural Clinics (KZN)
- Featured on SABC3 Business Update



Johan 082 535 4576

e-mail: johan@scarabsa.co.za

Now in Bela Bela (Warmbaths)

Tel: 014 736 3463 Fax: 086 763 8267 Cell: 082 441 9549

e-mail: scarabwater@gmail.com

Web: www.scarabsa.co.za

Have you hugged your water today?



obaro



R1 199⁰⁰

Elk

Dectomax
500ml



R645⁰⁰

Elk

Staaldraad
2.24mm vol
versink 1650m



R57⁰⁰

Elk

Nupro Aerosol
330ml



R1 699⁰⁰

Elk

Leo drukpomp
C/I 0.75KW 220V
18 maande
waarborg



R585⁰⁰

Elk

Olie
Multagri
Super 20



Promosie vanaf 27 Augustus tot 12 September 2015

Obaro behou die reg voor om voorraad te beperk. Sekere voorraad is slegs by geselekteerde winkels beskikbaar. Pryse sluit BTW in. Foto's is slegs ter illustratiewe doeleindes. Foute en weglatings uitgesluit (E. & O. E.)

In lyn met die boer

www.obaro.co.za

Obaro Pretoria: Pretoriusstraat 65, Pretoria - Tel: 012 323 6472/4

Obaro Wonderboom: Plot 107 Lavenderweg, Bon Accord, Wonderboom Tel: 012 381 2935

MGK
GROUP • GROEP

YOUR SOIL

Soil loss is a threat to human survival

The United Nations has declared 2015 the "International Year of Soils" and smallholders have as important a role to play as any landowner in preserving healthy soil and rehabilitating soil when necessary.

All soil is composed of mineral particles (sand, clay and silt), organic matter, air and water.

It is a "living" system in that it breathes. However, it is extremely fragile.

The most productive (fertile) part of the soil is only a couple of centimetres thick and this is usually the part that is eroded first. Soil scientists inform us that 2,5cm of topsoil takes between 500 and 1 000 years to form.

Not surprising, therefore, that today soil is a threatened resource, precisely because soil erosion is so pervasive

and hard to reverse.

Rich soils form a vital part of our ecosystems by storing and cleaning water, and keeping our climate stable.

But because of large scale, single crop, industrial agriculture, farmers have been managing their farms like factories, in pursuit of maximum profit.

They are focused on maximising yields, but often at great cost to the land itself.

Smallholders are also guilty of ploughing and loosening their land every year and "enjoying" in many cases an ongoing addiction to chemical fertilisers and pesticides.

These in turn carry nitrogen and phosphorus as well as soil into our water systems and into the sea each year.

Landowners too have sometimes failed to nurture and strengthen our soils, the

valuable soils on which our food production relies.

Topsoil is the layer that allows plants to grow and globally at current run-off rates we have only about 60 years of topsoil left, say researchers.

Half of the topsoil on the planet has been lost in the last 150 years. In South Africa it is estimated that 300 to 400 million tons of soil are lost per year. Nearly three tons per hectare of land per year for every ton of maize, wheat or

sugar produced.

In South Africa 40% of all cropland suffers from land degradation. Population pressure is going to exacerbate this issue as more and more marginal soils are put into cultivation.

Overgrazing is responsible for about half of the soil degradation in Africa.

Overgrazing leaves soils bare of vegetation, at the mercy of the elements. It also compacts

Continued on page 15



Erosion is responsible for the loss of 300-400 million tons of SA soil a year.



A concentrate of natural plant-beneficial soil microbes

- **Reduce input costs by at least 40%**
- **A cost-effective answer for large-scale and small-scale organic farming**
- **100% pure, natural soil biology**
- **Easy to apply**
- **Rehabilitates biologically-dead infertile soil**
- **Turns good soil into Super Fertile Soil**

Pack sizes:

5 litre; 25 litre; 210 litre

Apply it NOW!!

Gauteng Distributor:

Fred Daly

082 804 3130

www.soilbiomuti.com

RE-SELLER ENQUIRIES WELCOME



Torque Africa Exploration

SPECIALISTS IN ALL TYPES OF DRILLING



- **Reverse Circulation**
- **Down-The-Hole**
- **Core**
- **Boreholes, etc.**

Herman 084 837 1533
Nardus 082 829 6016

Contact us for professional service & guaranteed satisfaction

PJ ROOFS

PREFABRICATED TIMBER ROOF TRUSSES
& ROOFING MATERIAL

DESIGNING OF TIMBER ROOFS FOR
NEW HOUSES, ALTERATIONS, COMPLEX BUILDINGS ETC.

35 YEARS' EXPERIENCE

CUSTOMER SATISFACTION IS OUR PRIORITY

CEL: 083 241 6713

FAX: 086 754 8436

PEETRED@ABSAMAIL.CO.ZA

From page 14

the soil, inhibiting water infiltration in the ground - meaning water runs off on the surface and does not recharge groundwater.

Overgrazing, of course, is one of the key problems of smallholder land management.

So what can we do on our relatively small pieces of land to contribute to healthy soils?

☐ Be most cautious in using chemical fertiliser and aim to fill nutrient gaps rather than simply increasing total nitrogen and phosphate content.

☐ Time and target fertiliser application to coincide with maximum plant uptake periods and apply fertiliser in regular smaller doses rather than few large doses.

☐ Store synthetic fertilisers on an impermeable floor. Avoid interim storage in open fields, as this poses a high pollution risk.

☐ Fertiliser spreading machines should never be washed in rivers, lakes or near drinking water wells and springs. (The same goes, of course, for pesticide sprayers).

☐ Where possible, use organic fertilisers that contain a carbon source (for example compost, manure and plant matter - especially from legumes).

☐ Use crop rotation and inter-cropping to increase soil organic matter and nutrients. Where possible, rotate between grains and nitrogen-binding legume crops.

☐ Maintain a permanent soil cover - use either cover crops or mulch.

☐ Avoid excessive irrigation and ensure good water quality.

☐ Reduce the use of pesticides and herbicides that cause a decline in soil micro-organisms.

☐ Practice crop-appropriate minimum tillage.

☐ If tillage is required, till at the correct speed and only when the soil has the correct

moisture content.

☐ If possible, avoid crops that require soil disturbance to harvest.

☐ Prevent soil compaction by limiting heavy machinery, especially in wet conditions. Where traffic is necessary, use radial-ply tyres with low tyre pressures to minimise soil compaction.

☐ Ensure stocking rates are within the land's carrying capacity, based on the present veld condition.

☐ Monitor and manage veld

condition for optimal productivity with minimal environmental damage.

☐ Maintain or improve veld condition and the health of the soil by ensuring appropriate rest periods after relevant grazing and/or fire

events.

☐ Prevent overgrazing,

Continued on page 16



Typical smallholding: Overstocked and overgrazed

Turnkey Broiler Hatchery Unit

Stock your own units or sell to other farmers

- ☐ Produce your own fertile eggs for sale
- ☐ Produce your own day-old broiler chicks

- 400 layers & 40 cocks
- +/- 100 viable eggs/week
- Low power consumption
- Full training given
- Ideal smallholder enterprise

Full turnkey investment - Includes:

- ☐ Delivery to site & construction
- ☐ Commissioning
- ☐ Training
- ☐ All equipment & peripherals
- ☐ Comprehensive training & support
- ☐ 1st stock of chickens, bedding & feed

Available weekly:
Day old broiler chicks

Contact Leon
079 933 5180

Training Bookings:
Contact office:
Plot 26 Zwartkranz - R563 road
071 692 2229
info@diclatraining.com

SALES & EQUIPMENT

Mentoring, Farm Setup, Onsite training, Business plans
Broiler Breeder Unit Sales:
Jaco | 084 880 5544 | training@dicla.com
Phillip | 071 528 5463 | sales@diclatraining.com

Accredited Education and training provider
Accreditation No. AQA/16/09/09 - LT/04/09/04

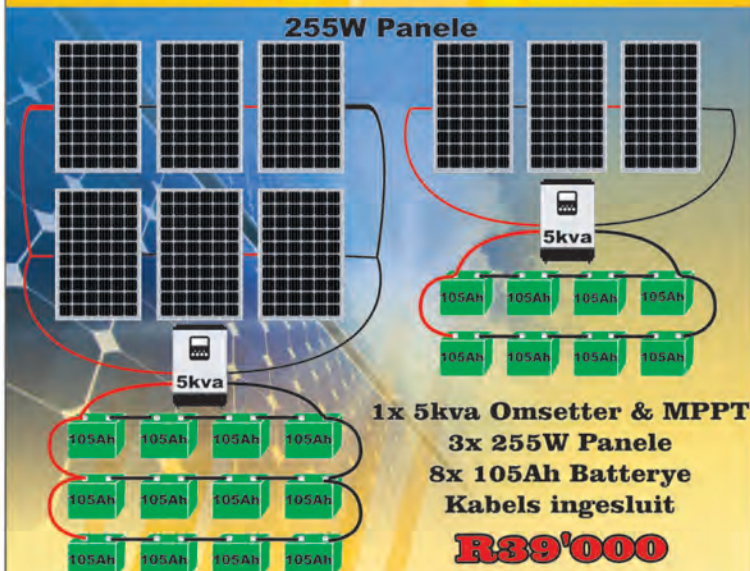
FOR A FULL LIST OF COURSES VISIT OUR WEBSITE

www.diclatraining.com



100ℓ	Lae Druk	R3000
200ℓ	Lae Druk	R4800
260ℓ	Lae Druk	R5800
380ℓ	Lae Druk	R7800
260ℓ	Hoë Druk	R9600

Installering kan gereël word teen ongeveer R3500



1x 5kva Omsetter & MPPT
6x 255W Panele
12x 105Ah Batterie
Kabels ingesluit
R54'000



SONKRAG
SOLAR VERSPREIDERS

Tel.: 012 8191081. 0828825145

25°40' 761"S, 028°19' 547"E • sonkragsolar@gmail.com • www.sonkragsolar.co.za

YOUR SOIL ———

Micro-organisms for healthy soil

Healthy soil is soil which will continuously function as a living eco-system to support plant life.

Soil health in conventionally-farmed lands is often poor due to the use of chemical fertilizers, mostly the addition of nitrogen.

The resultant unhealthy soil requires ever-increasing quantities of fertilizers to promote good growth, but also encourages the growth of

decreasing crop yields because of the pests attacking the underground and above-ground structures of the plants.

To biologically rehabilitate soil, control pathogens and lower crop input costs, it is necessary to repair the biological functions of the soil, which will also improve soil structure and water retaining capacity.

One effective way to accomplish this is to

incorporate a lot of organic material into the soil together with one or more applications of a liquid micro-organism carrier such as Soil Bio-Muti (SBM).

SBM is a collection of beneficial soil micro-organisms which are

taken from natural

virgin soil to a depth of 300mm and then by means of a special process, they are quickly propagated to high concentrations.

SBM thrives in moist soil with temperatures around 20 °C.

Soil micro-organisms are propagated in suspension in water, becoming Soil Bio-



Tomato grown with Soil Bio-Muti

pathogens and pests, such as eelworm.

To combat this, the farmer then resorts to ever-increasing use of pesticides.

Thus an unhealthy and unsustainable vicious circle develops with ever-increasing input costs and ever-

SOIL ———

From page 15

trampling and soil erosion.

☐ Rehabilitate degraded veld.

☐ Build, engineer and install

soil and water retention

constructions where appropriate, both to harvest and retain

rainwater run off, and to

capture silt. These can include

constructing contoured swales

across sloping fields and placing

silt-retaining gabions across

watercourses.

(Sources: Food and Agriculture

Organisation of the United

Nations and Agriculture: Facts

& Trends - South Africa, WWF)

Continued on page 18

Rugare Bird Farm

Breeders of Exotic Waterfowl & Rare Chicken



Easyhatch

Supplier of Fully Automatic Incubators



rugarebirdfarm.co.za easyhatch.co.za
 info@easyhatch.co.za
 079 893 6383, Vanderbijlpark
 GPS: S26° 41' 12.3" E27° 40' 26.2"

RCC

REEF CHAINSAW CENTRE

Your Outdoor Product Specialist

Sales & Service

Husqvarna®



Brush Cutters
Chainsaws
Lawnmowers
Ride-On Mowers
Zero Turn Mowers
Rotavators
Turf Care Equipment

ECHO®

Brush Cutters
Trimmers
Chainsaws
Blowers
Hedge Trimmers



HUSTLER® TURF EQUIPMENT

Turf Care Equipment



tandem

LAWNCARE EQUIPMENT

Water Pumps
High Pressure Washers
Generators
Brush Cutters
Lawnmowers
Chainsaws



WOLF Garten

Lawnmowers

shindaiwa

Brush Cutters



BILLY GOAT

Industrial Walk-behind Mowers



LASHER

Garden Tools

Johannesburg
120 Industrial Road
Amalgam
011 839 -3912/1535

Pretoria West
26 Rose-Etta Street
Pretoria West
012 327-6683/2779

Pretoria East
751 Jan Shoba Street
Brooklyn
012 362-2017/1987

West Rand
3 Frederick Cooper Road
Krugersdorp East
011 664-7924/28

East Rand
103 Rietfontein Road
Boksburg North
011 028-0752

YOUR SOIL

From page 17

Muti (SBM).

Organic material is any sort of manure, harvest residue, growing plants such as babala grass or leaves.

SBM is made up of soil micro-organisms which have been

propagated in high concentrations and applied to the soil to quickly and effectively break down organic material, thus ensuring optimal harvests in the short term and healthy and fertile soil in the long term. Soil becomes biologically active once chemical

fertilisers and pesticides are discontinued. Such soil is particularly effective in containing eelworm problems faced by maize farmers. This is an often

underestimated issue affecting maize yields, particularly in drought years when the plants lose their ability to combat the pest naturally due to stress and compaction of the soil.

Nico Snyman, a retired agronomist from Rustenburg, started a biological soil management programme in partnership with 15 maize farmers last year. The programme's emphasis was on maize farmers of Grootpan and Ventersdorp who irrigate their lands.

During the previous growing season he had already begun



SBM being applied by a sprayer mounted in front of a disc harrow.



Custom-designed combination SBM and manure applicator. The SBM is piped deep behind the ripper.

to suspect that plant parasitic nematodes were the main culprits that caused a 10-15% decline of a potential 10 ton plus crop yield in the Ventersdorp area. According to Snyman these symptoms are similar to stubby root nematode (*Paratrichodorus* or *Nanidorus* species) previously encountered in South African agricultural soil. They damage fine lateral roots and root hairs and thus limit the uptake of water and nutrients by the plant. Stubby root nematode infections differ from the more common and economically important *Meloidogyne* species or root knot nematodes that may attack a number of different crops and the damage they inflict as identified as knots and galls on roots. Research on the effect of SBM on nematodes was initiated by the late Prof Alex Mc Donald whose research is being continued by Prof Driekie Fourie and an MSc student of the Northwestern University at Potchefstroom. The nematologists at NWU are currently doing practical

Continued on page 20

BEAT THE DARKNESS! SUPPLY YOUR OWN ENERGY!

Create your own UV Power with our professionally installed Solar Energy Systems at unbeatable prices!

- Solar water geysers (100% local manufactured) SABS.
- Solar home and business energy systems.
- Solar light systems, specially designed: security lights, paddocks, stables, in-house and anywhere needed.
- Solar inline water pumps and solar submersible pumps.
- Solar gate motor plug and play units.
- Solar electric fencing 50Ah plug and play of grid units.
- Solar swimming pool motor plug and play of grid units.
- Solar mobile generators.

AUGUST & SEPTEMBER 2015 SPECIAL!
Purchase a solar energy installation and receive a FREE solar water geyser pre-feeder to the value of R10 500!

We design any solar application required by our customers!

UV-POWER (PTY) LTD
GREEN ENERGY SOLUTIONS

Contact us for a quotation!
011 050 1617 | 071 878 9206 | www.uvpower.co.za

BENTONITE

NATURAL CLAY LINER

For sealing Earth Dams ● Repairing leaking Earth Dams

- Easy to use
- Economical - only 1 x 40kg bag per 3 square metres
- Environmentally friendly

SALES: Call 0861 113 965 Fax 011 646-2144
For implementation guide visit: www.clay.co.za



3 Third Street Delmas
www.mnani.co.za



TEL 013 665 3054
TEL 013 665 2800
076 560 9856
gert@mnani.co.za
sales@mnani.co.za
workshop@mnani.co.za
accounts@mnani.co.za

SEPTEMBER MADNESS

COME VISIT OUR SPARE SHOP

SUPPLIERS OF:

DISC BEARINGS, DISC SHAFTS, DISC SPACERS
RIPPER TINES, CULTIVATOR TINES
BOLTS & NUTS
PTO'S, UNIVERSALS, YOKES
SPROCKETS, CHAINS
IMPLEMENT PINS, TOP LINKS



3 TINE RIPPER @ R7410.00 INCL VAT
5 TINE RIPPER @ R7752.00 INCL VAT



5 TINE CULTIVATOR @ R 9120.00 INCL
7 TINE CULTIVATOR @ R 11 400.00 INCL
11 TINE CULTIVATOR @ R 18 240.00 INCL



ROTOVATORS
1m, 1.25m & 1.5m



2 ROW PLANTER @
R 28 500.00 INCL VAT



2 ROW SKOFFEL @
R 13 680.00 INCL VAT

YOUR SOIL

From page 18

surveys of some of the maize farmers who are collaborating on the biological soil management programme.

They are evaluating the positive effect of SBM on parasitic nematode infestations. It is suspected that the nematode problem is also rampant in sandy agricultural soils of the Free State where maize is cultivated.

Infestations in these areas are severe and have considerable economic impact.

A possible reason for this is that the nematodes are too small to be seen with the naked eye and thus are not

an obvious cause for poor crop yields.

One very important reason for poor soil quality and ensuing nematode infections in agricultural regions is the intensive use of chemical pesticides and fertilizers during the last decades. It has disturbed the soil biology to such an extent that very low fractions of beneficial biological life remain.

SBM must be introduced into the soil as quickly as possible as these living organisms are killed by sunlight.

In small areas this can be done by wetting the soil with the compound and immedi-

ately forking the soil over to bury the micro-organisms as quickly as possible.

In larger applications a PTO-driven sprayer is re-located and mounted directly in front of the discs of a harrow. This immediately works the SBM in with residual organic material, into the surface layer of soil.

Deeper applications of SBM can be achieved by pouring SBM solution immediately behind the tines of a ripper, for example.

The compound can also be applied by spray irrigation at night.

SBM also has applications

among livestock as a promoter of good health. Among cattle it has been discovered that SBM helps as a remedy against lantana poisoning when dosed at 1 litre per animal undiluted. With chickens, 250 broilers bred near Cullinan had SBM in their drinking water. Feed-back after three weeks was that the birds were more uniform in size, 80g heavier for their age, had longer legs and good skeletal development, suffered no illnesses, thus no medication was required. In addition, the farmer experienced only four mortalities out of 250 birds,

Continued on page 21

Joburg Clivia Club Clivia Show

12 & 13
Sept 2015

Plant & Seed Sales
Large Variety & Colours

Show Times:

Saturday 08h30 - 17h00

Sunday 08h30 - 15h00

Entry R15 per person

Contact Glynn - 082 650 1463

Venue: Garden World,

Beyers Naudé Drive, Muldersdrift, Gauteng

www.gardenworld.co.za

GPS - S 26° 02.560' E 027° 53.164'

Ample Free Parking



BUILD HOUSE WALLS FOR R 98, 00/m²



Contact us now for
more information:

www.stumbelbloc.com
or call 083228 8036

**MAKE YOUR OWN BLOCKS
AND BUILD YOURSELF**

Humus: why it's important in your soil

All gardeners have heard of humus, and most probably associate it with decomposed plant material, usually the result of some composting process. While that's quite correct, a better and more detailed understanding of what humus is, and how it works in the soil, will give a greater appreciation of its importance.

Humus is a complex and rather resistant mixture of brown or dark brown amorphous and colloidal organic substance which result from microbial decomposition and synthesis and it has chemical and physical properties of great significance to soils and plants. The humus compounds have resulted from two general types of biochemical reactions: decomposition and synthesis.

As part of the decomposition process chemicals in the plant

SOIL BIO-MUTI



Cucumber grown with SBM

From page 20

mortalities out of 250 birds, the cages were dry, the manure less smelly and fewer flies were present.

Sheep are said to produce better quality wool and more meat when dosed with SBM. SBM is available in quantities of 5 litres, 25 litres and 210 litres and is used diluted or neat depending on the application. Distributors are also sought throughout Gauteng.

For more information contact Fred Daly on 082 804-3130.

residues including lignin are broken down by soil microbes. Other simpler organic compounds that result from the breakdown take part immediately in the second of the humus-forming processes, biochemical synthesis. These simpler chemicals are metabolised into new compounds in the body tissue of soil microbes.

The new compounds are subject to further modification and synthesis as the microbial tissue is subsequently attacked by other soil microbes. Synthesis involves such breakdown products of lignin as the phenols and quinones. These monomers undergo polymerization by which polyphenols and polyquinones are formed.

These high molecular weight compounds interact with nitrogen-containing amino compounds and form a significant component of resistant humus. Colloidal clays encourage formation of these polymers. Generally two groups of compounds that collectively make up humus are the humic group and the nonhumic group.

Manufacturers of Water, Chemical, Transport, Septic Tanks and Silos

<p>Cape Sales: Tel: +27 (0)22 433 2342/2937 Fax: +27 (0)22 433 4724 E-mail: rotocape@mweb.co.za</p>	<p>Gauteng Sales: Tel: +27 (0)12 376 1070/2 Cell: +27 (0)71 689 4216 Fax: +27 (0)86 297 2504 E-mail: roto@mweb.co.za PO Box 1210, Ifafi 0260</p>	<p>KZN Sales: Tel: +27 (0)39 685 7243 Fax: +27 (0)39 685 0292 E-mail: kznsales@rototank.co.za</p>
--	---	--

www.rototank.co.za **086 000 TANK (8265)**

Trade in your old tank for a NEW one!

Vertical tanks from 500€ to 40 000€

Horizontal tanks from 500€ to 8 000€

Free delivery

Modular plastic silos ranging from 8m³ to 24m³

Plastic septic tanks ranging from 600€ to 12 500€ (2-55 persons)

WINNING FEATURES

- Delivery time 7 to 10 working days
- Light, easy to install ~ no cranes required
- Rust and dent resistant, maintenance free
- Resistant to most hazardous chemicals
- Choice of various colours
- Tank stands available: 1,5m, 3m, 4,5m, 6m, 9m & 12m
- Warranty



FULLY GALVANISED AFTER WELDING							
Block Size	Wire Dia. mm	915mm		1220mm		1830mm	
		30m roll	per meter	30m roll	per meter	30m roll	per meter
6.4 x 6.4	0.70	R 1 245	R 52	R 1 650	R 63	--	--
9.6 x 9.6	0.90	R 1 265	R 47	R 1 690	R 65	--	--
13 x 13	1.00	R 1 100	R 46	R 1 480	R 57	R 2 225	R 86
13 x 13	1.60	R 2 510	R 97	R 3 330	R 132	R 4 995	R 194
13 x 25	1.00	R 835	R 35	R 1 110	R 46	R 1 665	R 69
13 x 25	1.25	R 1 195	R 52	R 1 595	R 63	R 2 395	R 97
13 x 25	1.50	R 1 725	R 69	R 2 285	R 92	R 3 415	R 132
13 x 25	1.60	R 1 970	R 80	R 2 620	R 103	R 3 925	R 154
13 x 25	2.00	R 3 120	R 120	R 4 165	R 160	R 6 245	R 240
25 x 25	1.00	R 670	R 29	R 880	R 35	R 1 330	R 52
25 x 25	1.50	R 1 240	R 52	R 1 645	R 63	R 2 470	R 97
25 x 25	1.60	R 1 415	R 57	R 1 885	R 75	R 2 825	R 109
25 x 25	2.00	R 1 790	R 69	R 2 385	R 97	R 3 575	R 137
25 x 50	1.50	R 950	R 40	R 1 260	R 52	R 1 895	R 75
25 x 50	1.60	R 1 060	R 46	R 1 415	R 57	R 2 115	R 86
25 x 50	2.00	R 1 390	R 57	R 1 855	R 75	R 2 780	R 109

FULLY GALVANISED BEFORE WELDING							
Block Size	Wire Dia. mm	915mm		1220mm		1830mm	
		30m roll	per meter	30m roll	per meter	30m roll	per meter
25 x 25	2.5	R 2 930	R 115	R 3 810	R 149	R 5 715	R 223
25 x 50	2.50	R 1 985	R 80	R 2 640	R 103	R 4 360	R 171
25 x 50	3.00	--	--	R 3 240	R 126	R 4 860	R 189
50 x 50	1.60	R 935	R 40	R 1 190	R 46	R 1 785	R 69
50 x 50	2.00	R 1 005	R 40	R 1 280	R 52	R 1 995	R 80
50 x 50	2.50	R 1 545	R 63	R 2 075	R 80	R 3 015	R 120
50 x 50	3.00	--	--	R 2 180	R 83	R 3 280	R 126
50 x 100	2.00	R 880	R 35	R 1 125	R 46	R 1 680	R 69
50 x 100	2.50	R 1 030	R 40	R 1 370	R 57	R 2 050	R 80
100 x 100	2.00	--	--	R 770	R 35	R 1 050	R 46
100 x 100	2.50	R 825	R 35	R 1 095	R 46	R 1 640	R 63

FULLY GALVANISED HEXAGONAL MESH (OOGIES DRAAD)							
Block Size	Wire Dia. mm	915mm		1220mm		1830mm	
		50m roll	per meter	50m roll	per meter	50m roll	per meter
13mm	0.70	R 840	R 23	R 1 100	R 29	R 1 650	R 40
25mm	0.90	R 790	R 23	R 1 050	R 29	R 1 575	R 40

J-CLIPS	CLIPS	PLIERS
Heavy duty	R 150	R 520
Light duty	R 150	R 160
HOG RINGS	PLIERS	
A16 / A18	R 95	R 595

GALVANISED SHEETING	
0.9 X 1.8 X 0.4	R 125
1.2 X 2.4 X 0.4	R 285

Open 7 days a week
from 8:00 to 5:00
Visit us at :
Birds and Pets for Africa

ROUND TUBING	
16mm x 1.6mm x 6m	R 65
19mm x 1.6mm x 6m	R 70
25mm x 1.6mm x 6m	R 85

CONTACT US:	
Anton Bouwer	083 679 1317
Leon (retail depo)	074 604 2024
Email:	aviary@mweb.co.za
Address:	226 High Road Pomona, Kempton Park
GPS:	26°5.936'S 28°17.817'E

ALL PRICES INCLUDE VAT, BUT EXCLUDE DELIVERY
PRICES ARE SUBJECT TO CHANGE WITHOUT PRIOR NOTICE.

IN THE FIELD

How to set up your plough

If you use a conventional tractor and a two- or three-share plough to turn your soil there are two adjustments you can make on your plough and three on the tractor that will make your task easier and more productive. Older, smaller ploughs are often fitted with a rotating bar to which the hitching pins are welded eccentrically. The bar itself is held firm and tight against the body of the plough by two large U-bolts. Rotating the bar (after loosening the U-bolts) will see the hitching pins alternately moving up and down and closer to, and further away from, the body of the plough. The effect of this, when the hitching pins are attached to the tractor, is to cause the body of the plough to flop over to the left, or rise to a more vertical position (caused by the up-and-down-movement of the hitching pins) and for the tail of the plough to swing to the left or right (caused by the hitching pins moving closer to and further away from the body of the plough). More modern, and larger, ploughs have bolt on hitching pins, the ploughs themselves being fitted with heavy plates drilled with two or three

vertical holes on one side and two or three horizontal holes on the other. Movement out of the vertical is achieved by changing the vertical bolt hole on the one side, while the degree of lateral movement of the rear of the plough is achieved by changing the position of the pin in the horizontal holes on the other. Both of these adjustments affect what you can achieve with the plough. The greater the degree of angle away from the vertical has the effect of leaning the plough shares to a more acute angle, facilitating the desirable action of the plough to “throw” the soil, upending it so that the tops of any vegetation are buried and their roots, conversely, exposed. (A plough that merely cuts away a sod of earth and allows it to flop back into its original position without turning it over is achieving nothing.) The extent of the throw you can achieve is further affected by the type of soil, the amount of vegetation it is carrying at the time of ploughing and its moisture content, as well as by the power available to you from the tractor, which in turn

Continued on page 24



The two types of plough adjustments: Left Adjustment holes through which hitching pins are bolted. Right: eccentric hitching pins on a rotatable bar.

Fire FIGHTING Season



Water Pump
25mm (1")
2-Stroke
*** GP25

R 1699
ex vat



0.35kw
Peripheral
& Control

R 999
*** GPM60 + GflowC ex vat

Pro-Pump
0.75kw
BOOSTER
*** GAUQUET-100



R 1799
ex vat



43cc CG
DIY Brushcutter
43cc CG style
*** CG 430CG

R 1799
ex vat



BD Style
Pro Brushcutter
33cc-52cc

- Walbro Carb
- Industrial shaft
- Industrial air filter
- Industrial gear box
- Quick release harness
- Grass Blade & Nylon head included free.



BACKPACK
16L Sprayer
*** SHS 16L

R 299
ex vat



13Hp

*** PS3WZ-106-188F

R 4999
ex vat

Power
Sprayer
6 Bar
116L/min



Earth Auger
43cc
*** MEAG43 Y

R 3499
ex vat

Also Available

10kW Petrol
6.3kW 220V
6.3kW 380V
4.6kW Diesel Silent



GENERATORS !!!

Petrol & Diesel models with Electric start, & AVR protection. Wheel kits available

2.5KW Petrol
from *** RGG3250

R 3999
ex vat

*(wheel kits are an optional extra)



Shredder
6.5Hp
*** S1002

R 8499
ex vat



50cc DIY
Chainsaw

*** SCS-50

R 1699 50cc FROM
ex vat



SOLAR Geysers

***Solar geysers only available at JBN north!

Low pressure style
100-300L
Models available

Hail resistant tubes 2.2mm
Effective in all temperatures
Free standing or roof mounted

ROOF mounting
brackets available

SABS tested

RED RHINO™
PREMIUM PRODUCTS

CALL for your NEAREST STOCKIST

JHB - 010 591 0432 (North) FAX - 011 668 1925
- 011 824 0446 (East)
- 011 660 5509 (West) sales@klbengineering.co.za
PTA - 012 804 5273 info@klbengineering.co.za
VAAL - 016 455 2556 www.red-rhino.co.za
Delmas - 013 665 3192

*Price exclude vat & are valid until 30th Aug 2015, or while stocks last!
All items are subject to prior sale. E&OE. Pictures may differ from actual products.

IN THE FIELD

From page 22

affects the speed you can work at (generally, the faster you can plough the greater and more consistent will be your throw).

There is also the observation that ploughing in sandy soil is better with a disc plough while heavier soils are better ploughed with a mouldboard plough.

The degree of lateral swing of the tail of the plough is also noteworthy. Too much swing to the right (when viewed from the tractor) and the toes of the two (or three) shares will not be aligned with the rears of the share in front. As



Illustrating a good throw: Two-share plough operating in very wet soil

a result, there will be strips of unturned soil with each pass of the plough, one between the furrows of a two share plough and two between the furrows of a three-share.

Conversely, too much swing to the left and the second and third shares will simply be ploughing partially in the furrow of the share in front.

This is useful if you have very heavy soil and an underpowered tractor that struggles to turn a full two or three furrows but in normal conditions this is simply

wasteful because you are not maximising the result of each pass of the plough.

Once you have experimented with what works best in your soil and with your tractor, you should not need to change the position of the hitching pins again, any further adjustment being possible from the tractor itself.

The three adjustments possible on the tractor are for the overall height of the ploughing effort or, in other words, the depth of the furrows, for the relative

heights off the ground of the two or three shares, and further adjustment to the angle of throw of the plough. The height/depth relationship is set by the hydraulic lift control and, if your plough is fitted with a rear guide wheel, there as well.

One of the most common mistakes made by novice ploughmen is to attempt to plough too deep. The plough is not the implement one uses for deep soil working. A plough is designed (and should be used) merely to turn over the top 10-15cm of soil, thus burying the tops of weeds and exposing the roots so that the plants die.

Thus your efforts at controlling the depth of the plough should be aimed at this 10-15cm level. Although you can probably achieve more in lighter, sandy soil, and with a more powerful tractor.

The shares, however, must be level with the ground when

Continued on page 25

HIGHVELD HONEY FARMS
PROTECT OUR BEES
Visit our farm in Rynfield to get your honey at farm prices. Bring your own containers and we will fill them up - pay ONLY for the HONEY
Plot 185 Uys St, Rynfield AH, Benoni
Tel 011 849-1990
Weekdays 07:00-17:00
Saturdays: 07:00-13:00

STEWARTS & LLOYDS PALISADE

The Largest Manufacturer of Steel Palisade Fencing in the Southern Hemisphere

Cold formed palisade panels

40 x 40 section
16 palings per panel

3 000mm wide x 1 800mm high **R537.00**
3 000mm wide x 2 000mm high **R575.00**

Cold formed palisade palings

40mm x 40mm	30mm x 30mm
1 200mm R17.44	1 200mm R14.77
1 500mm R20.73	1 500mm R16.94
1 800mm R24.71	1 800mm R19.42
2 000mm R27.37	2 000mm R21.25

3 or 7 spike available

CF PALISADE GATES

Includes wheels and tracks
1 800mm R618/m
2 000mm R637/m

Cold formed palisade panels

30 x 30 section
19 palings per panel

3 000mm wide x 1 800mm high **R507.00**
3 000mm wide x 2 000mm high **R541.00**

Palings and panels manufactured from 500mm to 3 000mm height

76 x 76 Square Posts
2 400mm R140.00
3 000mm R180.00
Includes welded cap

Hot rolled angle palisade panels

	25 x 25 x 2	30 x 30 x 2	40 x 40 x 2
1800mm	R500.00	R600.00	R700.00
2000mm	R570.00	R659.00	R799.00

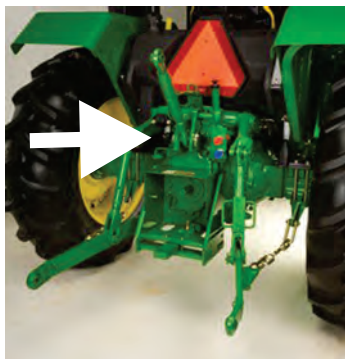
Alrode 011 900 4270
Boksburg 011 917 0778
Booysens 011 496 3000
eMalahleni 013 692 8425
Pretoria 012 800 9600
Robertville 011 672 1100

Only A-Grade Material Used
We Manufacture Various Lengths
Free Delivery • All Prices include VAT • E&OE

Springs 011 811 5111
Vanderbijlpark 016 981 2038
Vereeniging 016 421 3260
Wadeville 011 824 1800
Wynberg 011 321 7900

From page 24

the plough is lowered, and this is achieved by adjusting the central bottle-screw of the three-point linkage, called the top-link. To do this, park the tractor on level ground and gently lower the plough. Watch the tips of the ploughshares carefully as they reach the ground and adjust the bottle screw inwards or outwards until you are satisfied that the shares meet the ground at the same time.



The shares are made level by adjusting the length of the top-link (arrowed).

Now, here's a tip: In the field the hydraulics actually lower the plough in an arc, so that although you have adjusted the share to an equal height on ground that is level with the tractor wheels, as soon as you lower the plough further (ie 10-15cm into the ground) the rearmost shares will, in the downward arc of travel, actually be lower than the front one, by a fraction. To overcome this, once you are satisfied that the shares are level on flat ground, screw the bottle screw in a fraction, to tweak the rear shares up a little, just to compensate for the arc effect.

Up to this stage, all your adjustments have been made on flat level ground. This is not the reality in the field, however, when your tractor is (or should) be working at an angle, the right hand wheels being in the left-most furrow of the previous pass of the

plough. This can exaggerate the angle of the plough share and mess up your ability to neatly and accurately throw the soil. It will also mean that the left-hand (front) share is now deeper than its counterparts behind and some adjustment by way of the levelling box (on the right hand arm of the three point lift) will be necessary to ensure that the two (or three as the case may be) furrows formed by the shares are of the same depth.

Finally, the proof of the ploughing is in the viewing (to mix a metaphor). After a

couple of passes up and down the field stop the tractor and examine the furrows and the throws from each pass. Then furrows should be straight and level in depth, both over the full length of the field and in relation to one another and, if your field was flat to begin with, the furrows should each be filled with equal quantities of upended soil from subsequent passes. If either of these criteria is not being achieved, adjust the level, angle and height of the plough in the field before continuing.

ALLSOLAR Renewable Energy Solutions

- Solar Panels • Wind Turbines • Hydro Turbines • Inverters
- Batteries • Controllers • LED Lights • Solar Lights
- Solar Borehole Pumps • System Design • Energy Audit

Centurion:
012 664 1771
Johann

Silverlakes:
012 344 1061
Henning

078 458 8625 www.allsolar.co.za 082 334 7995

COUNTRY STYLE FENCING TREATED POST & RAIL FENCING

- Push-fit
- No nails or screws
- No Maintenance
- Very quick
- Very strong
- CCA TREATED



GUM POLES For Cattle, Horses & Gardens

POLE & TIMBER SUPPLIERS

TEL 072 113-4637

www.poleandtimber.co.za

TRACTOR MECH

Restoration of
New & Old Tractors

Vaaljapie
Specialist

For all:

- Sales
- Spares
- Rebuilds
- Service & Repairs



of your:

- Tractors
- Slashers
- Implements
- Stationary Motors

Johan Bouwer
072 576 2392

Martina Bouwer
072 861 6980

403 Bakenkloof Street Pretoria North 0182



AGENT FOR: **Epul** **PET** **Fibre-Beet**
ROSSGRO **Speedi-Beet**
VOERE • FEEDS

Quality that ensures Production & Profitability

- Ehlerskroon Protein Lick EP450 (already contains extra salt)
- Ehlerskroon Sheep Lick
- Ehlerskroon Spekvat (complete cattle feed)
- Ehlerskroon Sheep Woema (finisher)
- Ehlerskroon E300 (protein concentrate for cattle & sheep)
- Epul Lamb & Ewe
- Epul Mega Calf 18%
- Biomel (milk replacer for calves)
- Biolam (milk replacer for lambs)
- NEW: Game Cubes & Pellets

Lucerne Bales
25kg - R89 each
R86 each for 20 or more!

We offer expert nutritional advice.

Christelle King
BSc (Agric) Animal Science

11 Rooth Street, Bronkhorstspuit
013 932 1888

christelle@justic.co.za

Delivery to surrounding areas

TEL: 012 653 8342/8 or 083 269 0398

Email: dennismow@mweb.co.za

Unit 9 Miracle Park, Lenchen Ave

Ext off Old JHB Road CENTURION

GPS: 25°52.753'S, 28°9.635'E

EAST RAND: 011 730 3400

VALID UNTIL END SEPT' 2015



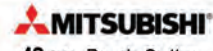
SERVING THE PUBLIC FOR 21 YEARS



43 cc Brush Cutter
Replacement Engine

BARGAIN

R1,195
Excl. VAT



43 cc Brush Cutter

BARGAIN
R2,850
Excl. VAT



**14.5/38 RIDE-ON
LAWN TRACTOR**

Cub Cadet OHV engine
14 hp / 10.5 kW /
3600 rpm
Cutting width:
96 cm
Displacement:
420 cc

R20,750
Excl. VAT



750 mm with Briggs &
Stratton Series 2100
engine, 10.2 kW, 420 cc

R16,500
Excl. VAT

Trailing Seat

R2,250
Excl. VAT

Proven over 50 years as the toughest in the country.
Makes light work of Heavy Duty Mowing!



MINI RIDER
30" Deck,

6-speed,
420 cc

R18,950
Excl. VAT



SPOIL YOURSELF
Hard work can be fun!
Sit back, relax, cup holder
for cold one.....

TANAKA TANAKA TANAKA TANAKA TANAKA

TANAKA TANAKA

32.6 cc Multi Tool with
Nylon Head, Blade, Chainsaw,
Pole Pruner, Hedge Trimmer

R5,100 Excl. VAT



BARGAIN
5-IN-1

Back-pack
Blowers

51.7cc
R3,250
Excl. VAT



Earth Augers

63.3
cc
150 mm
Drill Bit
Double
Handle

R4,150
Excl. VAT



Chainsaws

51.2 cc

R2,350 Excl. VAT



Brush Cutters

52 cc

R2,250
Excl. VAT



Mist Blower

84 cc,
20 Liter
Chemical
Tank

R3,600
Excl. VAT



Pole Pruner with Tanaka 2-stroke engine,

25.4 cc, 12" Guide Bar,
2.5 - 4 m Shaft Extension

R5,950
Excl. VAT



Hedge Trimmer

25.4 cc

R2,350
Excl. VAT



Brush Cutter

Engine 32.7 cc



ONLY R999
Excl. VAT

Shredder with

Power Pro

R183

4-stroke

Engine,

163 cc

R9,950
Excl. VAT



Hand Held

Blower

25.4 cc

R1,650
Excl. VAT



Trimmer

with

Clutch

26 cc

R1,225
Excl. VAT



**"The
Contractors
Choice"**

Granular Spreaders
4.6 L Chemical Tank

R1,350
Excl. VAT



Electric Chainsaw
Chain Sharpener

*12 Volt *85 Watt *5000 rpm
*Grinding wheel 105 mm max

R850
Excl. VAT



2 Kg NYLON LINE
All Sizes

R255
Excl. VAT



Top Handle
Chainsaw

30.1 cc



R2,965
Excl. VAT



Three Wheeler

500 mm cut

Briggs & Stratton

engine, 6 hp, 190 cc

R5,950
Excl. VAT



POWER PRO
2" Water Pumps

R1,875
Excl. VAT



Replacement
engine for STIHL
Trimmers
30 cc, 36 cc
& 40 cc

R950
Excl. VAT



Push Mower with
Kawasaki FJ180V

4-stroke engine,
179 cc, 6 hp

R4,850
Excl. VAT



45.4 cc
Brush Cutter Engine,

R2,250
Excl. VAT



FJ180V
Vertical Engine 4.5 kW

R2,350
Excl. VAT



PRICES ARE PER UNIT, EXCL. DELIVERY & EXCL. VAT. VALID FOR COD PURCHASES ONLY. WHILE STOCKS LAST. MODELS AVAILABLE MAY DIFFER FROM PICS. E&EO.



IN THE FIELD

Ploughing is easier (and quicker...) if it's reversible

If yours is a fixed two or three-share plough there is only one way to work your ground, and that is to start on the right hand side of the field so that your first pass of the plough throws its soil "out" of the field, and each subsequent pass is to the left, throwing soil into the furrows of the previous pass. To illustrate, if you intend ploughing your field in a north-south axis, you would start in the most north-westerly corner and plough to the south-westerly corner. Raising the plough you would drive to the south-easterly corner and plough to the north easterly corner. Then you would raise your plough and drive back to the north westerly corner, positioning your right hand wheels on the left-most furrow of the first pass.

Repeating this process will mean, firstly, that you will always be throwing ploughed soil into the furrow of the previous pass and, secondly, that you will be working in an ever-decreasing circle as your two passes up and down the field gradually come closer together.

Finally, if your field is square and you have ploughed

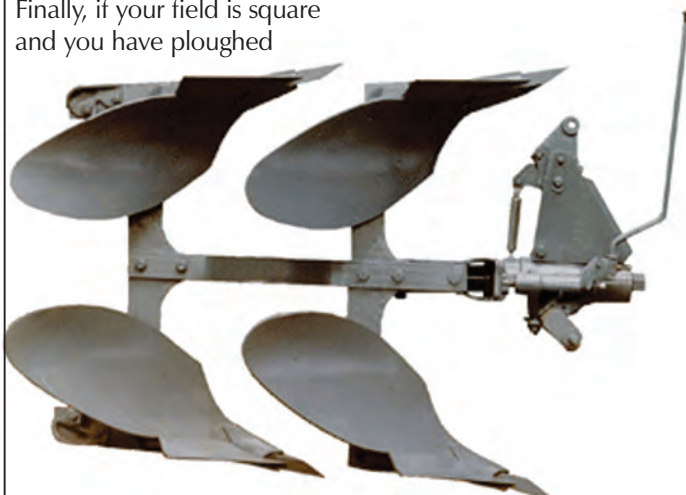
accurately, you will finish up with a trench in the middle of the field, basically the results of the final two furrows not being filled with plough earth. If you try to plough out and back, working from one side of the field to the other, you will simply finish up with peaks and valleys which, unless you want it so, will not be helpful when planting time comes.

This of course, presupposes you are ploughing with a fixed plough.

If yours is a reversible plough ("omslaaploeg") out-and-back ploughing is indeed possible, and saves the time (and fuel) used in driving from one side of the field to the other between passes, as changing the set of shares used (rotating the plough) at the beginning of each pass ensures that the ploughed material is always thrown into the furrow of the previous pass, regardless of the direction of travel.



www.facebook.com/gautengsmallholder



Reversible two-share plough (omslaaploeg)

WATER IS OUR BUSINESS

We carry the widest range of pumps and fittings for all your requirements

- Borehole Testing & Certificates
- Dewatering of Dams & Pools
- Installations of Borehole pumps & Garden Irrigation (Phone for Quotation)
- We now stock **POOL CHEMICALS!**

Specials:

0.37kW 380V Centrifugal Pump R610

0.6kW 380V Centrifugal Pump R830

(including VAT - while stocks last)

New Tanks now in stock!

Call us now for a quote on your GARDEN IRRIGATION

We also Repair!!



011 660 7824

TECHNOLOGIES

amanti

sales@amanti.co.za
www.amanti.co.za

67 Commissioner street, Krugersdorp
(opposite Action Ford)

GPS 26°06'07"S, 27°46'20"E

Consultations on ALL your water problems

**NO JOB TOO BIG
NO JOB TOO SMALL**



MS 381
Petrol Chainsaw
3.9kW • 72cc



FS 120
Petrol Brushcutter
1.3kW • 30.8cc



FS 280
Petrol Brushcutter
1.9kW • 38.9cc



FS 460 C-EM K
Petrol Clearing Saw
2.2kW • 45.6cc



MS 150 C-E
Petrol Chainsaw
1kW • 23.6cc



GB 460
Petrol Shredder
3.3kW • 59kg
For branches up to
60mm



GE 250
Electric Shredder
2.5kW • 27kg
For branches up to
30mm



GE 105
Electric Shredder
2.2kW • 19kg
For branches up to
35mm

Visit a **STIHL®** dealer in your area:

ALBERTON: Lawnmower Clinic 011 907 8484 • **BENONI:** Benoni Farmers' Supply 011 422 4103; Lawnmower Citi 011 845 2043; Master Mowers 011 395 2648 • **BENROSE:** Green's Industrial Supplies 011-6140295/6 • **BOKSBURG:** Lawnmower Ranch 011 918 5771/2 • **BRITS:** Enviro Chainsaws Brits 012 252 2479 • **BRONKHORSTSPRUIT:** Bronkhorstspuit Fietswinkel 013 932 0531 • **CENTURION:** Enviro Chainsaws Centurion 012 653 2479 • **DELMAS:** Deltool 013 665 3192 • **GERMISTON:** Lawnmowers International 011 873 8406 • **HEIDELBERG:** Masakhane Industries 016 349 6927 • **JOHANNESBURG:** Tooltech (Pty) Ltd 011 683 1761

STIHL®



Get Blown Away



BR 200-D
Petrol Blower
27.2cc • Max 59 m/s



BG 55
Petrol Blower
27.2cc • Max 63m/s



BR 500
Petrol Blower
64.8cc • Max 81 m/s



BG 86
Petrol Blower
27.2cc • Max 85m/s



BR 600
Petrol Blower
64.8cc • Max 90 m/s

• **JOHANNESBURG:** Rocha's Paint & Building Supplies 011 624 1004 • **KEMPTON PARK:** Precision Mowers 011 394 3393/8317
• **KRUGERSDORP:** GP Lawnmowers 011 955 3610 • **OAKDENE:** Glen Mowers - The Glen 011 436 2220 • **PRETORIA:** Grassnyer
Kliniek 012 323 1833; Mowtown Lawnmowers 012 323 2053 • **PRETORIA EAST:** Lawnmower Legends 012 997 0468; Mowtown
Lawnmowers 012 348 6427 • **PRETORIA NORTH:** Chainsaw Mecca 012 5465993 • **RANDBURG:** Loxton's Lawnmowers 011 793
6826; Uri's Power Centre 011781 1162 • **SANDTON:** Livingstones Garden & Home 011802 4822 • **SPRINGS:** Mr Lawnmower & Pool
011 811 5067 • **VEREENIGING:** TL Lawnmowers & Appliances 016 455 2556; Ziki's Outdoor Power Solution 016 422 4502

L'ESCARGOTS

Growing snails can be profitable

For most smallholders, they're just a garden pest which, like moles and aphids, one seeks to be rid of but for those in the know, garden snails are a prized resource that can, with a little care in preparation, be turned into a gourmet snack. And, for one East Rand grower, gourmet escargots

(the French word for snails) have been a three-year learning curve as he seeks to satisfy a market that prizes snails as greatly as it does such high-value delicacies as truffles, oysters and caviar. For, says Stanley Micallef of Benoni-based Stanley's Snails, there's money in molluscs: lots of it if one has the right production facilities. And he's looking for smallholders to grow the snail industry in Gauteng.

There are two methods to growing snails, both of which are suitable for smallholders: indoor and outdoor. Indoors, the snails grow in plastic crates with a row of small drainage holes drilled along one edge. The crates are covered with loose see-through lids which allow light to penetrate but prevent the

snails from escaping. The humidity (80%) and temperature (20°C) in the growing room is controlled by way of overhead mist sprays and heaters and light is provided for twelve hours a day by fluorescent tubes.

The snails spend seven months from hatching to harvestable size, two months less than if grown outdoors because the indoor growing conditions are manipulated to be optimal.

The crates are hosed out daily to remove the snail droppings and residual slime which cause stress to the inhabitants and after the wash water

has drained from the crates a sprinkling of specially formulated powdered feed is added. Because the snails are artificially-fed they grow up paler in colour than a snail

Continued on page 32



Ready by Christmas: approximately 100 juveniles in their crate.

BANG-A-LERT

Stop crime on your property
Affordable & Practical
6 000 units sold in South Africa
Simple Installation
No Power Required
Dealer Prices for more than 10 units
Mason Engineering
083 611 2857
www.bangalert.co.za

SEPTIC TANK PROBLEMS?
WE HAVE THE PERFECT SOLUTION

NO MORE MONTHLY COSTS ON HONEY-SUCKERS

RECYCLE WATER SAFELY FOR IRRIGATION
LIFETIME GUARANTEE ON TANKS
3 x TANKS BUILT UNDERGROUND
2 x PIPE SYSTEMS
ALL MATERIALS USED ARE SABS APPROVED
NO MORE BAD SMELLS
INSTALLING SINCE 1980's

Hydrogenic Digester Systems

For further information contact:
Pedro 083 444 1025
pedro@atms.co.za
www.atms.co.za

BBP

BRUWER BOREHOLE PUMPS

- Borehole Drilling
- Borehole Constant Discharge (yield) Tests
- Borehole Water Quality Testing
- Irrigation
- Pumps & Accessories

We work throughout Gauteng

Riaan Bruwer 082 567 9873
riaan.bbp@gmail.com

Mobile Borehole Pump

CAMPO

Seeds & Feeds

Animal & Avian Feed & Seed Wholesalers

Your 1-Stop Shop for all Fur, Feather & Fin Requirements

**18 Barratt Road
Factoria
Krugersdorp**

**011 955 5665
011 955 1819**
info@campofeeds.co.za
www.campofeeds.co.za

**Bird Feeders
Cage Bowls & Bird Cages
Less 20%**
(Ts & Cs apply)

Visit our store on the N14 Highway, Pinehaven Krugersdorp
Visit our Brits Branch - 44 Krokodil Drift Cnr R 512 & N4 Brits North West



DICLA

www.dicla.com

Spring Starter Pack

Everything you need to get planting this Spring!



Farmtrac 60.60 - **R245500.00**

Fieldking 2 Furrow Plough - **R13100.00**

Fieldking Offset 10x10 Disc Harrow - **R34700.00**

Agromaster 2 Row Mechanical Planter - **R58800.00**

Farmtrac 60.60 2wd - 45kw/60hp



Fieldking 2 Furrow
Mouldboard Plough



Fieldking Offset
10x10 Disc Harrow



Agromaster 2 Row
Mechanical Planter

*All prices excluding VAT



DICLA

Brits Office
Tel: 011 100 3690

Muldersdrift Office
Tel: 011 662 1371

Ernst Eichhorn
082 071 5795

Email: dpbrits@dicla.com

Email: gerry@dicla.com

Sandor Mouton
071 316 8451

Open Hours

Mon-Fri 07:00 - 17:00



L'ESCARGOTS

From page 30

growing under normal conditions, and a paler snail is more desired by chefs, says Micallef.

He houses about 100 snails per crate.

Outdoors, snails face a

number of predators, including rats and mice, lizards, geckos and birds, so the grower's first precaution is against loss from these causes. This is achieved by enclosing the growing area in an impenetrable barrier wall.

This can be brick-built but corrugated iron sheets, or even rubber conveyor belt, the lower edge of which is buried about 15cm into the ground, can be used. The remainder of the sides and the "roof" are covered in shade netting, sewn tight to prevent the ingress of pests. Greenhouse tunnels covered in shadenet rather than plastic, with a solid impen-

trable perimeter at the base, would make ideal, ready-made growing structures, says Micallef.

The snails themselves are housed in rectangular beds with pathways between to facilitate maintenance, feeding and harvesting. In Micallef's case the beds are about 75cm wide to allow access from both sides

Continued on page 33

THE WATER TREATMENT EXPERTS

DO YOU NEED TO TREAT:
Borehole Water?
Polishing of Municipal Water Supply?
River Water?
Dams, Lakes and Ponds?



**Consolidated Water Conditioning - LEADERS
IN Residential, Commercial and Industrial
Water Purification Systems!**

Consolidated Water Conditioning (CWC) is one of South Africa's oldest and most respected water treatment companies. We have been supplying residential, commercial and industrial water treatment solutions to water users throughout RSA, Africa and the Middle East FOR OVER 40 YEARS!

PRODUCTS AND TECHNOLOGIES INCLUDE:

Sand and Multi Media Filtration Systems
Ultra-filtration Systems
Reverse Osmosis Systems
Softening Plants

The CWC range of compact skid mounted systems have been specifically engineered to provide you with a quality water treatment solution.

ORDER FROM OUR CATALOGUE or
CALL ONE OF OUR EXPERT
SALES ENGINEERS

CWC
CONSOLIDATED WATER CONDITIONING



tel: +27 11 828 0103 • fax: +27 11 828 9699
email: sales@cwc.co.za • www.cwc.co.za



Outdoor snail housing showing vertical shade cloth to increase the overall surface area



DSICT
Security System Maintenance
and Installations

**WE DO MAINTENANCE,
INSTALLATION AND REPAIRS OF:**

- Gate automation • Electric fencing • CCTV (IP and Analogue)
- Magtouch batons • Alarm systems • Access control
- Two way radios • Two way radio repeaters • IT networks

Cell: 081 466 1288 | Fax: 086 730 9943

E-mail: sales@dsict.co.za | www.dsict.co.za



Diesel for Generators

Delivered throughout Gauteng
No callout fee
Minimum delivery 200 litres

DIESEL
Supply Logistics

082 826 7232 • 012 846 7007
www.dieselsupplylogistics.co.za

L'ESCARGOTS

From page 32

without having to step into the bed itself (with the risk of squashing the inhabitants). Micallef has modified an overseas design shadecloth "fence" about 75cm high which incorporates two sewn-in horizontal skirts which prevent the snails from escaping. Snails climb up to the highest point they can go, but when they encounter the underside of one of the horizontal skirts they tend to turn around and descend. The second skirt is "just in case" they are too adventurous.

The interior of the beds is planted with low, shade-loving ground cover such as clover and wild strawberry, which provides hiding places and shade to the snails, as well as cabbage plants, on

which the snails feed. When he started, Micallef was advised to plant spinach as a snail feed crop. He soon discovered that they much prefer cabbage.

The beds are stocked with about 200 snails per square metre, the stocking rate being intensified by the addition of vertical drops of shadecloth suspended off short poles in much the same fashion as frames are suspended in a beehive.

The roof of the growing area is

Continued on page 34



Specially-sewn shadecloth fencing showing two horizontal skirts to prevent escape.

FIBREGLASS EXCELLENCE CC

~ Est 1994 ~

Manufacturers of Fibreglass Roof Sheeting

SPRING SPECIAL

Profiles:

IBR, Corrugated, Nurib, Big Six, GVR 32 & Flat Sheeting

Colours:

Clear, Blue, Green, White, Bronze

85% Light Transmission

From R67.99 pm

including VAT & delivery

Wide range of
Polycarbonate
Sheeting

Reject Sheets
R36.99 pm incl VAT
CASH & CARRY

Fibreglass
Raw Materials
also available

FREE DELIVERY IN GAUTENG

011 818 2045

Marie 083 302 4642

Nico 083 287 3436

Fax 086 234 7467

marie.fglass@wfi-mail.co.za

SAY YOU SAW IT IN THE SMALLHOLDER
& GET AN ADDITIONAL 2.5% DISCOUNT

Efficient Metal Traders

HARDWARE
NOW OPEN!

203 Zesfontein Road, Petit, Benoni

Office 011 965-1706

Deryck 082 574-0467

Nathan 084 508-1062

TRADING HOURS

Mon - Thur 8:00 am - 4:30 pm • Fri 8:00 am - 3:00 pm • Sat closed

GPS 26°06.052'S, 28°22.282'E

SQUARE TUBE 6m

20 x 20 x 1.6	R81.00
25 x 25 x 1.6	R100.00
32 x 32 x 1.6	R132.00
38 x 38 x 1.6	R182.00
50 x 50 x 1.6	R230.00
76 x 76 x 1.6	R346.00

ROUND BAR 6m

10mm	R56.00
12mm	R79.00
16mm	R167.00

SQUARE BAR 6m

10mm	R71.00
12mm	R97.00
16mm	R216.00

EQU ANGLES 6m

25 x 25 x 3	R107.50
30 x 30 x 3	R120.00
40 x 40 x 3	R185.00
50 x 50 x 5	R347.00

RECT TUBE 6m

32 x 20 x 1.6	R122.00
38 x 25 x 1.6	R157.00
50 x 25 x 1.6	R190.00
50 x 38 x 1.6	R207.00
76 x 38 x 1.6	R280.00

LIP CHANNEL 6m

75 x 50 x 20 x 2	R278.00
100 x 50 x 20 x 2	R313.00
125 x 50 x 20 x 2	R349.00

FLAT BAR 6m

20 x 5	R75.50
25 x 5	R101.00
30 x 5	R121.00

GAS PRODUCTS

Oxygen 14kg	R285.00
Acetylene 9kg	R1 355.00
Teral 17.5kg	R720.00
Argon 17.5kg	R780.00

LP GAS

at competitive prices

Nuts & Bolts

All welding
& cutting
equipment

PFERD



cutting disks

Weighbridge facilities
R65 per weigh



TAURUS WELDING RODS

2,6mm x 2kg	R85.00
3,2mm x 5kg	R210.00

PRICES SUBJECT
TO CHANGE

ALL PRICES
INCLUDE VAT

Suppliers of 2nd Hand Steel Off-Cuts & Material

SUPPLIER OF AIR LIQUIDE GAS PRODUCTS

FREE DELIVERY WITHIN A 25 KM RADIUS



L'ESCARGOTS

From page 33

fitted with a sprinkler system which ensures a daily watering, after which dry feed is put out on wooden feed trays which are off the ground above the suspended drops of shade cloth.

In this growing method the snails spend nine months from hatchling to harvest.

One of the features of snail production is that there is no waste generated, (apart from wash-down water in an indoor growing system), as every part of the harvested snail is usable.

Like all living creatures snails are prone to diseases and ailments of which, though hard to believe, stress is one, says Micallef. And, as in all intensive growing operations immediate removal of mortalities and obviously diseased animals is imperative if one is to prevent an outbreak. But for the most part, optimal growing conditions, stringent applica-



Cleaned snail shells await filling with cooked snail meat and sauce, tion of hygiene controls and a watchful eye throughout the growing period will keep losses to a minimum. Once they have grown to size snails must be purged so that their alimentary canals are free of grit and partially-digested food. This is achieved over a ten day post-harvest period, following which they are killed, removed from their shells, deslimed and either blanched or cooked through. The shells themselves are cleaned and, if suitable, retained to be refilled with a cooked snail and sauce, to be served up, heated, as a ready-made hors d'oeuvre. Restaurants will also order blanched or cooked snails, with shells separate, to do their own dishes. Snail meat that is unsuitable

for use whole is minced and made into pate.

Snail slime finds a ready market among cosmetic manufacturers, particularly as a skin tightening preparation. Cracked or damaged shells are ground up as a chicken-feed additive.

Snails are also unique in that their ability to hibernate for long periods means that one can withhold stock to await processing or sale without having to feed them (unlike a broiler chicken, for example, which starts to cost its grower big-time if it is not sold and slaughtered once it reaches its target weight).

To hibernate snails is easy: they are simply collected, placed in a porous (string) bag, and refrigerated at 5°C until required.

At the other end of the growth cycle, manipulation is also possible to a degree. Snails hatch from soft, white

Continued on page 36

**Construction
Starting!!!**



EASTLANDS
MATURE LIFESTYLE ESTATE

**Homes From
R795 000**



*The Jewel in Mature Lifestyle
for the Young at Heart*

**ON SITE
SALES
OFFICE**

Country living, situated in Benoni North
1, 2 & 3 bedroom, single-storey homes
Sectional title, NO LIFE RIGHTS
Frail care facilities & in-home care
Lodge facilities
State-of-the-art security



Eastland Properties: 010 035 0451
Chris: 082 651 5563
Jan: 083 587 0469
www.eastlands.co.za

DUNVEGAN PLANTS

082 363 0457
dunveganplants@gmail.com
238 Protea Street, Putfontein




**Wholesale producer of herbs,
flower seedlings and veggie seedlings.**

Hanging baskets, colour pots and herb boxes on request.
Bulk orders planted on request.



Valdor Centre, Beyers Naude Drive, Muldersdrift
heronbridgeproduce@gmail.com

011 957 5964
074 421 4802

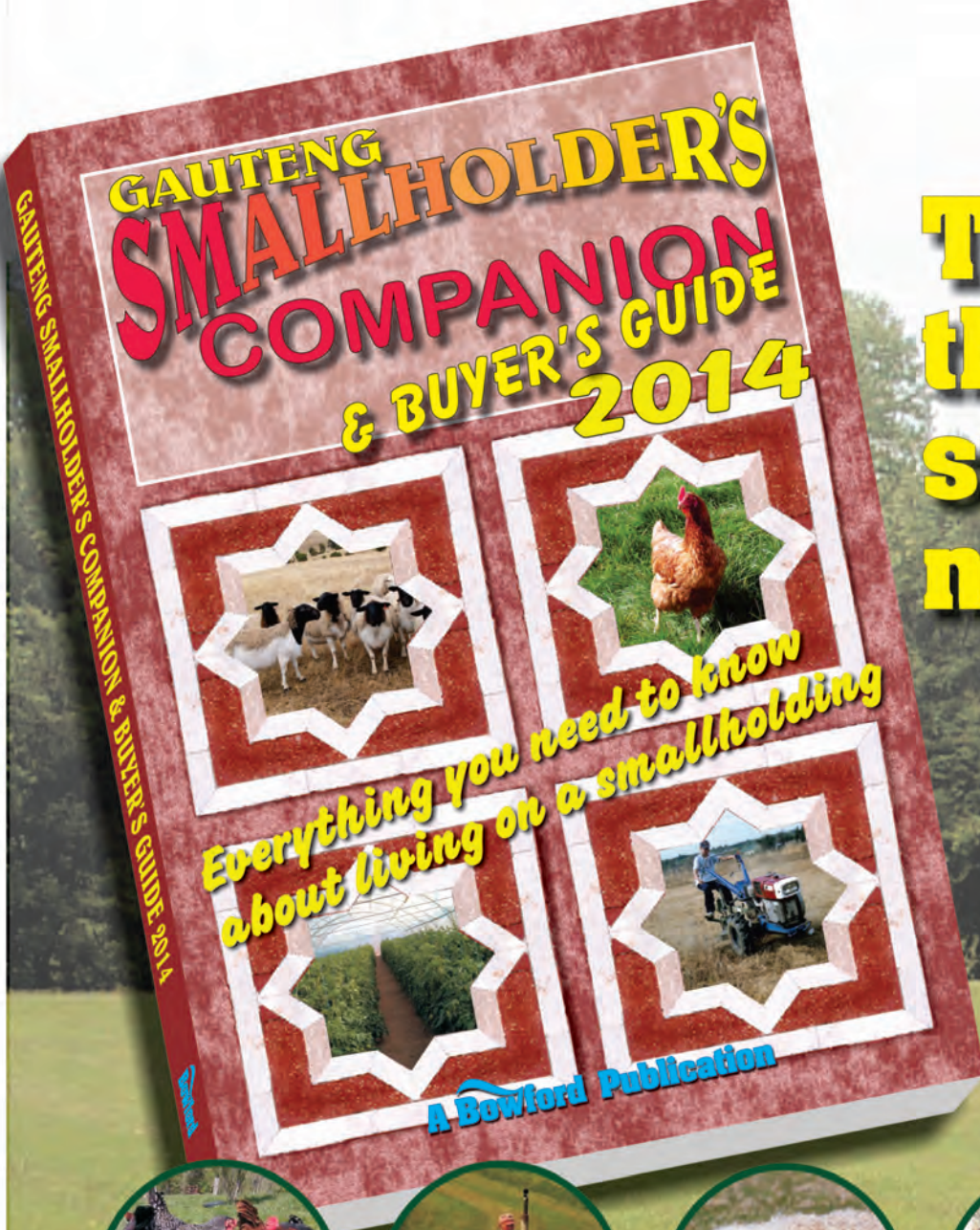
HERONBRIDGE
Animal Feed & Agri Supply
Supplier of Quality Lucerne, Eragrostis and Pine Shavings
Pharmaceuticals • Fertilizers • Fresh Produce

SPRING SPECIALS!

Fresh Green Eragrostis Bales
R460 each
2nd grade Green Eragrostis bales
(still green inside) R350 each
Less 5% off
Wash and/or Repairs
of Horse Blankets
Prices include VAT



Available here!



The book that every smallholder needs

Contents include:

- Infrastructure (fencing, septic tanks, irrigation etc)
- Keeping Livestock
- Crop Production
- Pasture Management
- Farm & Garden Machinery
- Legislation applicable to smallholders
- ... and much more, in 34 information-packed chapters!



Order your copy TODAY...

OR call us for a stockist near you

(you can also view a list of stockists at www.sasmallholder.co.za)

Only R180-00 VAT and delivery included

(Complete & email to bowford@gmail.com or fax to 086 602 3882

Please send me copies of the Smallholder's Companion 2014. **OR...**

Payment can be made by EFT. (We will supply our bank details on receipt)

Name:

Postal Address:

Tel/Cel number:

Phone 011 979-5088 or email bowford@gmail.com for EFT & delivery details.
A receipted Tax Invoice will be issued to you as acknowledgment of your order & you will be notified of your Post Office tracking number or other delivery details.

**34 chapters,
fully-illustrated,
208 pages**

Order & pay via **PayPal**
 go to: 
www.sasmallholder.co.za

L'ESCARGOTS

From page 34

eggs, with a good layer producing about 3g of eggs a cycle.

The eggs are laid in a specially prepared laying medium, in which the pregnant layer buries herself for the laying process.

Under commercial production conditions these eggs are then removed and hatched artificially, the tiny hatchlings then being grown out for a few weeks under careful control before they are placed in their growing

containers or outside beds. The layer will not start laying until she feels conditions are right, so by withholding her from the laying medium one can to an extent regulate one's rate of supply of eggs, and thus hatchlings, to suit one's production requirements.

But, there's more: Snail eggs are a highly prized ~ and highly priced ~ gourmet foodstuff, dubbed "white caviar". In the UK, for example, a 75g jar of snail eggs retails for £90 (more than R1 800 at today's exchange rate).

Having spent more than three years experimenting with snail production, carefully selecting snails that have shown superior genetic abilities as layers, and of quick-growing progeny, and adjusting certain aspects such as the snails' diet to compensate for the effects of the high altitude of Gauteng, Micallef finds his

entire harvest is readily snapped up by buyers at food markets and by word of mouth.

Under conventional conditions snail meat needs, of course, to be refrigerated (it can be frozen if required). Given the tiny amounts involved (an average serving is not usually more than half a dozen or a dozen snails) refrigerated transport over any distance becomes prohibitively expensive. New packaging methods make it feasible to transport small quantities over long distances, with no effect on flavour or texture, and with long-term storage possible.

Thus, if there was sufficient production, it becomes feasible to serve markets countrywide, even overboard, by courier or even mail, says Micallef. This opens up the possibility, he believes, of serving leading restaurants and high-end

tourist lodges throughout the continent, where rich European guests are not prepared to be fobbed off with a tinned snail as a substitute.

Demand far outstrips his ability to supply and he is thus looking for smallholders with suitable ground, or buildings, to increase production.

Prospective growers will be able to buy hatchlings from him as well as the specially-designed shadenet fencing, and specially-formulated highveld dry feed. Micallef will also advise growers on a consultancy basis.

Finally, when the crop is ready Micallef can be approached to buy the live full-size snails for onward processing and distribution.

For more information: Stanley Micallef, Stanley's Snails, tel 011 849-6430 email dragon@dragonglass.cc

Snake Catcher

Protect family, pets, poultry & livestock

Catch a snake safely

1m rust-free snake tong*

For only R695-00

Including free trackable postage to any PO in SA

*Snake hooks & snake bags also available

Ralph 082 573 0710

snakealert@global.co.za

www.snakealert.co.za

BUILDING A HOUSE?

don't look anywhere else!

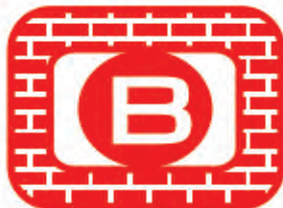
BRICKS * SAND * STONE CEMENT * HARDWARE

B-HOUSE BUILDING SUPPLIES

C/o Garsfontein Rd & Blesbok St, Mooikloof Pretoria East
Tel: 012 480 0088
Cell: 082 558 9722

www.b-house.co.za
Email: sales@b-house.co.za

Open: Mon - Fri: 07:00 - 17:00
Saturday: 07:00 - 13:00



H@USE BUILDING SUPPLIES
Mini & maxi loads of Building Materials

1.2m ERAGROSTIS BALES

New Season Green Fresh

10 bales minimum



A-GRADE AVAILABLE

WELL FERTILISED & WEED FREE

We Deliver
(bulk deliveries only)

JACQUES 060 621 4876



AMBERLINK HENS

6 week old Pullets

(All vaccinations done to 6 weeks, including MS Vaxsafe)

17 week old Point of Lay Hens

(All vaccinations done)

AVAILABLE MONTHLY

FARM FRESH EGGS cc

**016 371-2154
082 903-6595**



Genius Landini
Import & Export cc



**ONS HET IETS VIR ELKE
BOER SE BEHOEFTE**

Landini **McCORMICK**

**WE STOCK A WIDE RANGE OF
TRACTORS AND IMPLEMENTS**

**BALERS
WRAPPERS **CALLIGNANI**
RAKES
DISC MOWERS
TEDDERS**

NEW **FALCON** SLASHERS
BALE HANDLING MACHINES

**A WIDE RANGE OF
BP IMPLEMENTS
AVAILABLE**

IN STOCK:

**BALE TWINE FOR
SQUARE BALERS
ROUND BALERS
BIGPACK BALERS**

**HIGH QUALITY NETTING
FOR ROUND BALERS
& WRAP PLASTIC
FOR WRAPPERS
AVAILABLE AT
GOOD PRICES**

**WIDE RANGE OF
PALLET NETTING
& HAND STRAPPING**

**ENGEN OLIE MET UITKLOP PRYSE
ENGEN OIL AT KNOCKOUT PRICES**



**20 litre
210 litre**

GPS: 26°04.157'S 27°40.845'E

TEL: 011 952 9926/7/8

FAX: 086 571 5578

marco@geniuslandini.co.za

admin@geniuslandini.co.za

DAIRY DAY AT BELNORI CHEESERY



At the Alzu Feeds stand: Leigh Anne Parker and Mart-Marie van Zyl (both Alzu) with Dairy Day organiser Norman Belcher.



Part of the crowd listen attentively to a lecture by Kenneth Botha.

Maize Feed & Seed
x **Dog Food** **AVI-PLUS**
HIGH PERFORMANCE FEEDS AGENT
Shop no. 1 Bashee Street Mall,
Three Rivers, Vereeniging
016 423 5767

Dog food • Montego • Supreme • Bow Wow
Cat food • Poultry feed • Bird seed
Pet accessories • Reptile accessories



On the Voerdokter stand: Roxy Ellis, Stephan Kiefer and Magda van der Walt Botha

Seen at Belnori Boutique Cheesery's Dairy Day last month. The annual event attracted dairy farmers and smallholders, and cheese-makers, from far and wide.

ROOF SHEETING

Buy direct from factory

ADVANTAGES:

- Shatterproof, Weather & Hail Resistant
- UV Protected
- Over 70% Light Transmission
- Product is 2,5mm thick**
- Domestic & Industrial
- Easy to Install - DIY
- Choice of 4 Colours
- 7 Year Guarantee
- Cheaper than Fibreglass

We Deliver

IDEAL FOR:

- Patios
- Carports
- Zozo Huts
- Hot Houses
- Pool Houses
- Factory Skylights, etc

PLEASE CONTACT
PAUL 084 652 8310
info@4eversheeting.co.za
www.4eversheeting.co.za

4EVER SHEETING
POLYETHYLENE ROOF SHEETING

TOP POLES & THATCH

We will assist you with all your Thatching & Building requirements

Services:
Any Size Thatched Roof
Repair & Maintenance
Harvey Thatch
Fire Protection of Thatch & Wood
Lightning Conductors
Skylights
Decking
Wooden Fencing
Pergolas
Paving
Construction

Products:
CCA Treated Gum Poles
Laths
Fibreglass Capping
Cape Reed
All Thatch Hardware & Accessories

Willie: 083 765 9475
Jerry: 083 363 7450
Office: 010 220 5043
willie.topthatch@gmail.com
www.toppoles.co.za

Dam Linings Damvoerings

Reservoir Linings **Mesh Dams** **Zinc Dams**

Earth Dam Linings **Feedcovers** **Truck Tarps**

TATA MA TARPS & LININGS
072 279 3294
www.tatamatarps.co.za

DAIRY DAY AT BELNORI CHEESERY



Left: Stephan and Riaan Steyn (both Regal Fruits).



Barbie Pretorius (Grootplaas Cheese Academy) with visitor Tanya Smith and Cherrylynn van Wyk (Dairy Cheret).



Organisers Rina and Norman Belcher flank ARC representative Leon Botha.



Left: Johan Herholt and Hentie Nel (both Nutrichem).

Dog Food • Animal Feeds • Bird Seeds • Popcorn • Shavings

PET
SUPREMACY MADE FOR YOUR PET

TipTop
Top Feed for Your Top Dog

BOW WOW

Maize 2000

MAIZE 2000 MEYERTON

016 362 1962
073 955 9960

(opp Vegieland)
Boet Kruger Street

HI PERFORMANCE FEEDS AGENT

GUSTO PUMPS CC



THIS IS THE SIGN FOR WATER MANAGEMENT



Drukstelsels



We supply and repair all
PIPES, FITTINGS & TANKS,
SUBMERSIBLE PUMPS,
BOREHOLE MONO ORBIT PUMPS,
SWIMMING POOL PUMPS,
PRESSURE SYSTEMS

at the best prices!

Borehole Drilling

Boorgatpompe



Johan Osmers
082 552 6071

TEL 011 957-2588

Carina de Jong
082 872 4143

Ook in Tarlton by die kruising van N14 en R24 . **Tel 011 957-2588**

LIVESTOCK

Four indigenous veld goat types

Indigenous goats arrived in South Africa with migrating tribes and are found in the specific areas where the different ethnic groups settled.

The general appearance of these goats tends to support

theories that they originated in different ecosystems.

The Indigenous Veld Goat (IVG) was officially registered as a breed in 2006 and a breeders' society was established.

The concept of an indigenous goat breed makes most people think of the red-headed Boer Goat, which was developed in South Africa during the previous century. The Boer Goat is famous throughout the world as a hardy meat goat, with a high resistance to disease and an ability to adapt well to hot, dry semi desert conditions. However, this breed is the result of selective breeding which drew on a variety of goats found locally, particularly in the Eastern Cape.

According to the Indigenous

Veld Goat Society there are four distinct eco types of indigenous goat. These do not include the Boer Goat.

An ecotype is a genetically distinct population of plants, animals, or other organisms that is found in a particular habitat, but still within a species.

The ecotypes are:

- ☐ Nguni type goats (Mbuzi) – multi-coloured with semi pendulous ears;
- ☐ Eastern Cape Xhosa – multi-coloured with lob ears
- ☐ Northern Cape, Lob Eared, Speckled (Skilder) Goats

Continued on page 41



Indigenous Veld Goats of the multicoloured Nguni type.

Visual Power Protection
Catch them before they Catch you!
www.visualpower.info

082 412 2081
We Supply, Install and Repair:
CCTV, ALARMS, ELECTRIC FENCE, GATE MOTORS

JP CONRADIE BOERDERY BK
The **ORIGINAL CONRADIES**
tel: 079 527 7079 • 082 920 0196
fax: 086 524 1890
Trading hours:
Monday - Friday 07:00 - 16:00
Lunch: 12:00 - 13:00
Saturdays: 08:00 - 11:00
email: man@mweb.co.za
admin.man@mweb.co.za
office.man@mweb.co.za
visit our new website: www.jpconradieboerderij.co.za
Boschkop Farm:
midway between Bapsfontein and Bronkhorstpruit
(see website for map & directions)

NEW SEASON SPECIAL!!!
All Products: R171.00/m³
Garden Grow (Top Dressing)
Landscaping Soil (enriched with compost & manure)
Compost
Sifted Kraal Manure
Fine Sifted Chicken Manure **R228/m³**
Collected (including VAT):
The cheapest way to obtain our product is to collect it yourself.
Do not forget to check the bakkie's tyre pressure!
Front tyres 2.8 bar, rear tyres 3 bar, and if using a Venter-like trailer, trailer tyres 2.8 bar.
A bakkie can load ±1m³, a Venter trailer ±0.5m³
Compost is light (±500-600kg/m³) and the soil mixes (±1 000kg/m³).
Please email us for further information.
If you require a quote for delivery,
please email the delivery address, product and quantity required.

TRANSLUCENT
POLYCARBONATE SHEETING
Flat, Profiled & Multi-wall
Polycarbonate Roof Sheeting
At Affordable Prices
Profiles:
IBR
CORRUGATED
NURIB
DIY Skytiles
Translucent Lightweight UV Protected
SAVE ON ELECTRICITY
due to natural lighting
We also supply:
Turbine ventilators
Roof fasteners
Butyl sealants
End closure flashings
DIY Skytile kits
MASBIZ TRADING CC
Tel: 011 894 2873 / 079 882 2515
jhborders@mikocontrol.co.za
192 Dr Vosloo Road, Bartlett, Boksburg
www.mikosheeting.co.za

From page 40

Q Kunene Type (Kaokoland) – multi-coloured with lob ears. These goats have developed naturally towards functional efficiency and the breeders place great emphasis on fertility, femininity and masculinity. They are exceptionally fertile, even from a young age. IVG



Skilger ram

ewes are known for their extraordinary mothering abilities, and will fiercely protect their offspring and

themselves with their sharp, efficient horns. They have non-seasonal breeding patterns and have a long productive lifespan. A slightly sloping rump and very slight cow- or sickle hocks, (usually more in ewes) are characteristic of Indigenous Veld Goats, which aids in giving birth.

Ewes have good milk production and can easily feed twins or even triplets. IVGs have a very strong herding instinct, which helps to protect them from predators. The horns also aid them in getting access to food and to scratch at external parasites such as ticks.

They have a lively posture and are alert. They are mobile and light-footed, with lean, long shapely legs to move

with ease and to walk long distances. IVGs are adaptable and less susceptible to tick borne diseases such as heartwater. Because they are resistant to ticks, they don't need much dipping. They are also more parasite tolerant, and are generally capable of coping with drought conditions. They can either browse ($\pm 60\%$) or graze ($\pm 40\%$) on a

wide variety of plants, shrubs and grasses. They have the potential to select a higher quality diet over a short time and have the ability to obtain nourishment from average forage quality.

They have a relatively thick and generally good pigmented skin, with good pigment on the vulnerable parts, such as head, ears,

Continued on page 42

ZUIDERLAND BOOMKWEKERY INDIGENOUS TREE NURSERY



40+ VARIETIES AVAILABLE • DELIVERY CAN BE ARRANGED
1,5 METER TALL • ALOES ALSO IN STOCK

SPECIAL OFFER SELECT 25 FOR R 1000-00

99 DALE ROAD
GLEN AUSTIN
MIDRAND

CELL: 082 801 9555
FAX: 086 687 0222

EMAIL: MBRAK@ZUIDERLAND.CO.ZA

OUTDOOR WIRELESS BURGLAR ALARM SYSTEMS



EARLY WARNING PROTECTION DEVICE



- PROTECTS SMALLHOLDINGS, FACTORIES, WAREHOUSES, CARAVANS AND HOMES
- WIDE-ANGLE, LONG RANGE DETECTION
- WIRELESS BEAM COMMUNICATION
- SYSTEM ON FULL BATTERY BACK-UP
- CAN BE LINKED TO SIREN, FLOODLIGHTS, STROBE OR EXISTING ALARM
- WEATHERPROOF AND IMPERVIOUS TO LIGHTNING
- ANIMAL-FRIENDLY - NO FALSE ALARMS
- COMPLETE RANGE WIRELESS INDOOR SENSORS
- SA-MADE TO WITHSTAND HARSH CONDITIONS



To ensure YOUR home's security call Rob du Toit TODAY!

ALARM MATE
Tel 011 042-7167 cell 083 267-3842
www.robguard.co.za

LIVESTOCK

From page 41

muzzle, chest, back and lower legs, which protects them from the sun. They have a wide variety of colours and colour patterns which helps in camouflaging and make them difficult to be spotted by predators. Most indigenous goats grow cashmere between their hairs in the cold winter season to protect them. In summer they shed this woolly cashmere. Due to their hard, good pigmented hooves, there is almost no sign of growing claws (except maybe in very sandy areas).



Twin births, and even triplets, are common

Their meat is succulent with good flavour and is very low in cholesterol. Their production environment includes hot, dry to hot, humid bushveld and savannah. It is not unusual for a flock to have a 190% kidding rate. In one year, 50% of the ewes give a single kid and the other 50% twins or triplets on the first kidding for the year. On the second kidding in the same year, 50% of the ewes will probably kid, of which 50% produce singles and the other 50% twins.

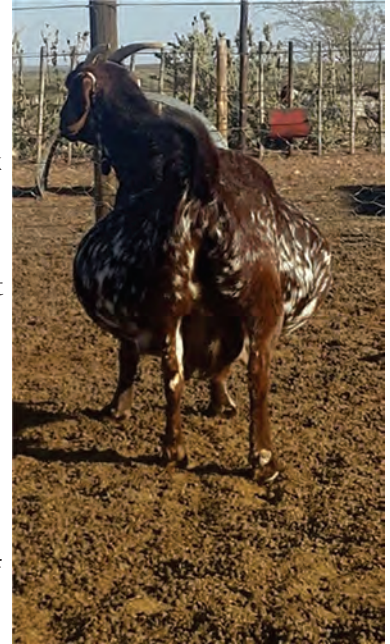
Products include meat; skins with a great variety of beautiful colour patterns that can be used in making value-added "hair-on" items; quality

leather, which will be unblemished by tick bites, and milk, which is particularly popular with people who are allergic to cow's milk. There will be some challenges in keeping these goats on a smallholding. Probably the greatest will be fencing, as goats are notorious escape artists. While the goats are hardy enough to be left out on the veld all the time, the threat of livestock theft is too great in Gauteng, so they will need to be penned at night. It is recommended that you get a good sheep dog to help you to bring them in. It is most important that you acquire well-bred animals to start with, as there has sadly been too many misguided attempts at "improving" the breeds, which has led to the loss of very valuable genetic diversity.

The Indigenous Veld Goat

Society encourages a general interest in the breeding of Indigenous Veld Goats.

For more information: 083 383-2737 or 051 445-2010 or go to www.indigenouseveldgoats.co.za.



HEAVILY pregnant ewe

Maxwell SATELLITE BROADBAND INTERNET Connectivity Anywhere!

- Fast and reliable internet, always on
- Satellite footprint covers the whole of SA
- No reliance on Telkom infrastructure
- No daily limits or CAP's
- Various uncapped data bundles available
- Support available when you need it - 24/7

Why wait for promised alternatives - have it now!



Please call us
012 940 0660

Get Ready for Spring

**Honda-powered
Firefighters & Sprayers
in many sizes
& designs**

500 litre bakkie-mounted firefighter unit with HP pump and 20m delivery hoses as standard.

Full range of Honda Tillers & accessories to suit all soil conditions



Honda UMK435
Brushcutter
4-stroke engine



Honda
FJ500
Tiller

*Spares for older model
Honda machines
always available!*

*Consumables
for trimmers, etc.*

1 GRANT ST, NEW STATE AREAS, SPRINGS
TEL: 011 817-3044/84
074 133-0187 / 074 133-6542
082 444-8952
FAX: 011 817-3063

GPS 26°14.282'S, 28°24.402'E

www.mfpafrica.com
e-mail: mulpower@netactive.co.za



MULTI



FIRE & POWER



Times are a'changing *... and so are we*

Announcing:

Online publishing for SA smallholders
www.sasmallholder.co.za

- Articles online as they are written
- Classified ads online as they are received
- List of advertisers, with links to their websites
- Events listed as they are planned (shorter lead times)
- Simple & fast-loading for slow 3G connections
- Wider coverage for ALL SA smallholders
- Useful links
- No sign-in or membership required

Great online advertising opportunities to an already established readership!

Constantly changing, always up to date

www.sasmallholder.co.za

Brought to you by the publishers of:

GAUTENG
SMALLHOLDER
MAGAZINE



For queries phone 011 979-5088 or email gautengsmallholder@gmail.com

VEGETABLES

Grow potatoes and thwart moles

Potato growing success is possible with well-drained, deep, sandy loam containing plenty of humus, paired with cool, moist conditions. Yet, even in seemingly ideal growing conditions, potatoes are not always problem free, being susceptible to an astonishing number of setbacks. You can encounter

early blight, late blight, mosaic virus, potato scab or blackleg. You might battle against cutworms, wireworms, moles or aphids.

But here's a solution. Consider constructing a potato tower. You will need 1 – 1,2m tall weldmesh fencing with sufficient gauge to retain its form, and last for a few years; wire cutters, some sort of twisty tie, cable ties or binding wire, straw or hay, pure manure-free compost, a water source and seed potatoes. Use the wire cutters to cut out a section of the fence to create a cylinder about 90cm in diameter. Use either twisty ties, binding wire or cable ties to tie the fence ends together. Use straw to create a nest at the bottom of the bin to both help keep in the compost, and to reduce water-loss due to evaporation. If you do it

without the straw, use weldmesh with smaller holes to keep the compost from spilling out.

The straw naturally supports itself up the sides as you spread it, leaving a large central area for the compost. Next, shovel in compost to a depth of about 30cm. Plant potatoes in early spring,

after the danger of frost has passed. Use disease-free seed potatoes and cut each potato so that two eyes are on each piece, laying the potatoes about every 10 – 12cm along the very outside of the bin, right next to the straw layer, with the eyes pointed out.

Continued on page 45



Potato tower necessities

Raspberry Canes

Plant NOW for delicious fruit at Christmas!

In 2 litre bags*: R25

***2-3 plants per bag**

Cash & Collect

072 587 9137

sweetberries@mweb.co.za

JOHN DEERE

**CLOTHING, TOYS & GIFTS
HUGE VARIETY AVAILABLE**

Spring is Here!



Mon - Fri 07h00 - 17h00 Sat 08h30 - 14h00

48 Pomona Road Kempton Park

Tel : (011) 965-1292 or 083 680 7746 / 7 www.revet.co.za

SEPTIC TANK PUMPING



0861 11 33 24

**Authorised Permit Holders
in Ekurhuleni**

082 300 3996

VEGETABLES

From page 39

Potatoes only need a couple of eyes per piece to grow, so feel free to cut up the larger potatoes into two or more chunks, at least as big as a golf ball. The smaller potatoes can be simply planted whole. Ideally, cut the potatoes 24 hours prior to

planting, allowing time for a scab to grow over the cut, thereby reducing disease or rot issues.

Next, it is important to absolutely soak the compost, as it often is on the drier side. Do this after every potato layer is planted.

Continue to lay down a new layer of potatoes on top of 30 cms of compost until finished. The whole bin will use about

2 kg of potatoes.

There are a couple options for finishing off the potato tower. You can finish it off with a top layer of potatoes, along both the outside and also an inner circle, which will sprout out the top of the bin. Cover with about 15cm of compost. Or you might consider planting other plants or herbs which will help to keep away aphids and other insects. Try

lavender, wild garlic, nasturtiums or marigolds.

It is important to keep the bin moist, from top to bottom.

In about ten to 14 days you will see your first little potato shoots sprouting out the side of the potato tower.

Once the potatoes have all died back in the late summer, it's harvest time. Simply tip over the potato bin and pick

Continued on page 40

Buyers of ALL Scrap Metal

TURN YOUR SCRAP INTO CASH



Old cars, trucks, tractors, trailers, machinery etc

We Cut, We Remove

Throughout Gauteng

Simunye Scrap Metal & Recycling

Call Andre 079 547-4249



Line the outside with straw and fill the inside with soil



- Borehole Yield Testing SANS 10299 BWA app
- Water quality testing SANS 241
- Rehabilitation of Existing Boreholes
- Borehole pump sales & installation
- Exploration & Monitoring drilling
- Reverse Circulation Drilling (RC)
- Symmetric Drilling
- Large Diameter Drilling
- Water borehole drilling



Email: info@watermandrill.co.za
Tel: 013 932 1740 Fax: 013 932 2352 BRONKHORSTSPRUIT

Affordable Wooden Stables Wendy Houses & Cabins



Wendy Centurion
012 670 9070

mdeflamingh1@gmail.com

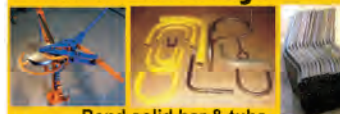
www.wendycenturion.co.za

Turn METAL into MONEY!



Build your own ENCLOSURES, GATES, BAKKIE RAILS, FEEDERS, TRAILERS, even FURNITURE!
• No Electricity • No Heat

Multi-Bend System



Bend solid bar & tube to 50mm with no wrinkles
Improved model for easier bending

Pipe Notcher



Notch pipe for neat angle welds

Brake Press

Bend up to 110° angles in 10mm steel



Ring Roller

Roll solids & pipe for any project



MADE IN



SINCE 2004

Delivered to your door ~ Built to last ~ Easy to use
5 year warranty ~ Spares & advice always available
Project photos & info: www.strongman.co.za



**STRONGMAN
METAL TOOLS**
www.strongman.co.za

To get an information pack:

e-mail info@strongman.co.za or strongmantools@gmail.com
sms GS + your e-mail address to 083 327 9988
call Andries on 083 327-9988, or visit us at No 8, Greenhouse, cor R23 & N3, Heidelberg.

ALIENS

Easily-recognised common weed in Gauteng

Another alien invasive plant found on Gauteng's smallholdings is Smelter's bush (*Flaveria bidentis*). It is

an annual herb that originated from tropical America. It invades crops, roadsides, gardens, waste places and disturbed veld.

Its invasive status is NEMBA Category 1b.

Category 1b lists invasive species that require control by means of an invasive species management programme. In all cases, the law requires property owners to check if any of these species are on their property.

If they are found, the property owner or occupier needs to control them from jumping the garden fence (Category 1a) or needs to submit an invasive species management control programme explaining why he or she should be granted a

Continued on page 47



Left: the full planter. Right: with plants emerging through the straw

POTATO PLANTER

From page 45

out the potatoes from the remaining compost and, by now, well-rotted straw.

You can also grow potatoes in old tyres. Start by filling two with soil, ensuring that the space where the tube would

be is also filled. Plant a seed potato and, as it grows add more tyres, gently filling them with soil around the stem each time. This will fool the plant into turning the covered stem into more "root", encouraging the development of further tubers.

Once the plant dies off simply demolish the stack and harvest. If the plant was well-nourished and watered you should have a few spuds of different sizes throughout the height of the stack and not just at the bottom.

Using a tyre stack in this way you can easily reach a height of six or seven before the plant dies off. On this basis it is better to use whole tyres rather than ones from which the sidewalls have been cut because, although you can grow more than one plant in a tyre without its sidewall, a stack made solely of the treads is much less stable.



DIE INTELLIGENTE KEUSE
INDIGENOUS, PO LLED, PRO FIT

Tuli

THE INTELLIGENT CHOICE
INDIGENOUS, PO LLED, PRO FIT

Onder beskerming van die
Tuli Beestelersgenootskap
van S.A.

obaro 3de Noordelike Tuliklub
Produksieveiling

OBARO WONDERBOOM
Lavenderweg 107, Bon Accord

Donderdag
10 September 2015
11:00

20 Bulle (2-4 jr oud)
40 Vroulike diere (Dragtig/Oop)

Navrae:
Hans Terblanche (Bemarker) - 072 216 9034
Peet Kruger (Bemarker) - 082 809 3836
Craig le Roux (Afsiaer) - 082 808 7747
Callie Barnard (Koördineerder) - 082 561 5216

www.vleissentraalbosveld.co.za

1. Slegs bankgewaarborgde tjeks/elektroniese oorbetalings op dag van veiling - GEEN KONTANT. 2. BTW is betaalbaar.
3. Vleissentraal se standaard verkoopsvoorwaardes (Rules of Auction) is van toepassing - www.vleissentraalbosveld.co.za
4. Registrasie: ID en bewys van fisiese adres verlang 5. Verbruikersbeskermingswet - 68 van 2008 - www.info.gov.za

VLEISSENTRAAAL BOSVELD 015 - 491 3141
Geregistreer volgens wet 12 van 1992

PRETORIA



Beulah

Pregnancy Diagnosis of Cattle
Artificial Insemination of Cattle
Animal Production Consultation
Animal Reproduction Consultation
Cattle Vaccinations

Christelle King
BSc (Agric) Anim Sci
072 361 8934
fcjvrensburg@gmail.com

ALIENS



Flowers (above) and stem (right) of the Smelter's Bush.



From page 46

permit to keep them on the property (Category 1b). If there is no reason why they should be on the property, a permit can be denied and the law requires one to remove and destroy the species on the property.

Seeds of the Smelter's bush are spread by water, wind, vehicles and people. One plant can sometimes produce 100 or more flower heads in summer in a tightly packed array. Each head contains three to eight yellow flowers. The leaves are bluish-green, opposite, shortly stalked, linear to lance-shaped.

Leaf margins are finely serrated, and prominently three-veined from the base. The flowers are yellow; the central flowers are tubular and are 4-6mm long. The corolla is bright yellow, 2,3mm in length and the tube is 0,8mm. Flowers are five to 15 pieces. The plant flowers in summer.

Now here's some technical stuff which you may or may not understand: "fruit is an achene of about 3mm long. The achenes are black, little, flat and oblanceolate or nearly rod-like with no pappus." No fine.



QUIRKY

Gatvol of cable-theft, this is one Honeydew landowner's solution to the problem.

BOREHOLE DRILLING THROUGHOUT GAUTENG

- 50 Years' experience
- Modern, powerful equipment
- Prompt, reliable service
- Best rates and advice

AND: We can arrange all your associated requirements
Eg, borehole siting, pump installation, piping electrical work etc

We drill throughout Gauteng & adjoining areas

LANSERIA DRILLING CC

For all your drilling needs call us today.
Tel 011 957-2588 ~ Cell 082 552-6071

Fire beater

FIGHT VELD FIRES EFFECTIVELY

**Get yours TODAY:
It's the LAW!!**

1,8m long, thick but lightweight
wooden handle keeps user away
from smoke & flame

Unbreakable
Fastening

Made from
recycled
rubber belting
(not strips)

Only R85,00
cash & collect
Price includes Vat.

Trade enquiries welcome
Scrap belting also available

To order call
Derek Whittall
078-706-6456

Solid rubber sheet
SMOTHERS flames
FAST!

Can't find the
**GAUTENG
SMALLHOLDER
MAGAZINE**
JUST ASK...

Ask your shopkeeper to stock
the magazine and we will deliver
copies to the shop for you*

**Subject to certain conditions*

For enquiries phone
076 176 7392

Alternatively, you can subscribe and receive the
magazine by mail. Simply complete the coupon
found elsewhere in this copy and mail it with your
payment for R210 for a year.

R and R ENTERPRISE (Pty) Ltd

Approved
Operator
Training
Ruan
082 3076 541

082 5610 443 - Hugo (Transport & Plant)

082 7444 191 - Maryna (Storage)

email: u-go@vodamail.co.za

fax: 086 505 4237

Call us for:

- Demolition
- Road Construction
- Clearing of Plots
- Site Clearing
- Factory Removals
- Civil Contracts
- Tree Felling
- Tree Transplants
- Machine & Container Moving
- Preparation of Horse Arenas, Sports Fields, etc.

Containerised
Storage - Secure
6m & 12m units

We Supply & Deliver:
River Sand
Stone & Quarry fill
Backfill, etc

Petit Airport

• FARA 133.2 Fully Licensed

- Hangarage
- Flying lessons
~ microlight
~ helicopter
~ aeroplane

Call Hugo 082 5610 443

ARTICULATED
DUMP
TRUCK

TOWER CRANE

WATER TANKER

TIPPER
TRUCKS

SMOOTH
DRUM
ROLLER

TELEHANDLER

4x4 TLBs

EXCAVATOR

GRADERS

UNDERGROUND
FRONT END LOADER

DOUBLE-AXLE HORSE
with 35 ton CRANE &
3-AXLE LOWBED TRAILER

SKID
STEER
LOADER

FRONT END
LOADER

FORKLIFT

BULLDOZER

GAUTENG SMALLHOLDER CLASSIFIED ADVERTISEMENTS

**ABSOLUTELY FREE TO
PRIVATE INDIVIDUALS.
CONDITIONS:**

1. Animals (including horses), birds, poultry, fodder, bedding, etc must be paid for as SuperSmalls (see p 52).
2. Wanted ads, services of any kind are also SuperSmalls.
4. No Commercial ads accepted as classifieds (see display ad tariff - p 1).
5. Placement maximum of 3 months

SUPERSMALLS

Entries in this yellow-shaded section cost R120 VAT included for 25 words, plus R1/word thereafter. Colour photographs may be included, at a total cost of R380 for both text and picture, VAT included

FOR SALE

POULTRY

Boschvelde Chickens: I have day old to 4 week old Boschveld chickens for sale. We hatch weekly. Contact Peter 082 330-4096, Roodepoort.

Regular supply day old Pekin ducklings for sale at R10,00 each. Call Gwaine on 074 550-4315

LIVESTOCK & PETS

Good Quality Dorpers, 9 ewes, 1 ram, 1 wether, 14 lambs various ages. R24 000 Pretoria East. 082 822-2285

Blackhead Dorper lambs, 3 months old,

rams and ewes available R950 ea. Also old slaughter ewes R800 ea. Pete 072 587-9137 Bredell

Dragtige vleis Merino ooie x 53 besig om te lam R1 600 elk. Kontak Vaas 081 092-7646 Bapsfontein.

MISCELLANEOUS

Stop thieves: Outdoor wireless alarms for houses, cottages, outbuildings. 4 outdoor wireless sensors, Main control panel, 2 remote controls, siren, battery, etc. R2 495 installed in JHB or DIY. Also cut fence alarm, www.stopthieves.co.za or contact Colin 079 180-2853.

Stainless steel farm donkey. 210 litre, fire-heated. Constant hot water. From R3 454 incl VAT. Contact 011 762-1212, 082 456-0973 or stainlessspecial@absamail.co.za.

PRODUCE, PLANTS & FODDER

Raspberry canes in 2 litre grow bags R25 each. Pete 072 587-9137 Bredell

Fruit and nut trees. Olive, peach, nectarine,

plum, almond, apricot, walnut, prune, pomegranate, pecan nut, apple, cherry, pear, fig, quince, mulberry, lemon and grape vines. Contact Douw 084 506-5125 Vereeniging.

Indigenous trees. 40 varieties available. Aloes also in stock. Contact 082 801-9555.

FOR SALE

Entries in this section are FREE OF CHARGE, but are for used items, private property sales/rentals, and employment offered/wanted only.

FARMING REQUISITES

Manual stainless steel honeybee comb spinner. Takes 3 large combs or 6 small combs. Tank 70cm x 50cm with spinner, drain tap & lid R3 000. Contact Willem Marais. 082 554-6639. Rayton area.

DAB K40/400T 5.5kW 380V single impeller cast iron centrifugal pump. Brand new DAB K40/400T still on crate base. 2 x used DAB K40/400T with gates & nozzle. 1 x used DAB K36/200T. 2 x AquaDrive 2100's Speck Pump (filters). Pressure gauges incl. I am asking R20 000 for all these pumps and connectors. All pumps are in working

condition and have only been working for 6 months in the past two years (summer work only - kiddies water park). They are being sold as a bundle, no single units. Collection required, Paulshof. Dwight 073 425-0758.

Centrifugal pump 6" with electric motor for sale R8 500. Phone 071 556-0122.

800 liter melktenk 3 fase, melkpomp en 2 punte R6 000. 084 745-0171.

PTO waterpomp en 5,5kW waterpomp R2 100. Stafax 3 plus 1.4mm 100m nuut R2 000. PTO Waterpomp. Stafax 3 plus 1.4mm kabel 100m. Sunshine dorsmasjien in werkende toestand en 5.5 Launtop waterpomp. Alles vir R11 900. Skakel Andre 082 292-5774.

MISCELLANEOUS

Beautiful solid wood of light colour table 1 500mm x 1 500mm plain lines no decorations, 4 legs 100 mm x 100 mm, strong and solid, for big family, with 8 chairs or work area where space is needed, could even make lovely king size bed base if legs are shortened. R2 500. Elaine Meyerton 082 286-4423.

Rhodesian Teak (railway sleeper) king size bedroom suite for sale. Includes headboard, 2 side tables, kist and dressing table. R13 000. 071 408-4403.

Alpacas For Sale
Magicalpaca's Farm
in Kempton Park offers:
A selection of
pedigreed Alpacas
at competitive prices

Coverings available from stud quality herd sires

Call Lee Ermen
082 455-4288
bounty@iafrica.com

Dikgogo Fela
Chicken Abattoir

We slaughter for the Smallholder

Randfontein
S 26°12.310' E 027°36.156'
083 401 3002

Gemengde Broodkrummels
40kg @ R90
Voer vir Beeste, Skape en Varke
073 358 8541

Ysterberg Mastiff Matcho Stud

Fanie
073 202 5211
Gerda
073 326 4492
matchomastiffs@gmail.com
matchobaele.wix.com/matcho

AFRI-CA
IMPLEMENTS
BOTHAUVILLE

Tough & Dependable Machines
Ideal for a Smallholder

Hammermill
Petrol, diesel or electric
Belt drive, 3 sieves,
Mild steel blade is easily
replaced. Mills **ANYTHING!**

Feed Mixing Trailer
Petrol or diesel driven
Belt drive
Cap 2-2,5 tons/hr

Mealie Thresher
Petrol or diesel driven
Belt drive
Cap 2-2,5 tons/hr

1 000 litre capacity
PTO-driven ~ Ideal
for a small tractor

Call Piet Roets
056 515 4380
pietroets7@vodamail.co.za

It's Sheep Shearing Season!
SHEEP SHEARING SERVICE
SKAAP SKEER DIENS

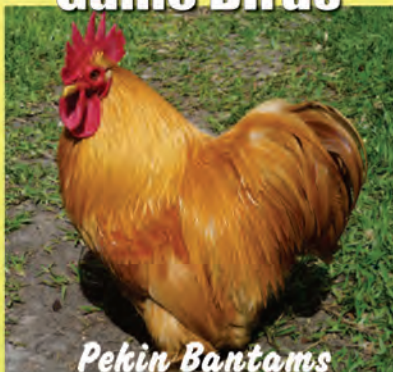
Pieter
082 878 5623
Hilton
082 602 4462

Budgies 2 Bantams

Breeders, Buyers & Sellers of Exotic Poultry & Small Stock Animals

Breeders of over 50 breeds of poultry
Specialists in Exotic Poultry

**Bantam Breeds
Large Breeds
Game Birds**



Pekin Bantams

55 fully stocked cages

NEW STOCK ARRIVED!!!



Puppies available

**Hand-reared
AFRICAN GREY
breeder**

Free Advice



Goldfish

**Visit us for a
fun-filled family
experience**

Unique Farm Pet Shop

**Aviaries, Cages, Pet accessories:
Dog leashes, Shampoo, etc.**

Only 20 min drive from PTA CBD & Fourways
on the M26 (Main Road/Erasmia)

**Open Sundays & Public Holidays
by appointment only**

Mohamed 082 379 1555 (owner, complaints/queries)
Chris 079 692 0542 (sales/buyer)
Johan 082 689 0287 (sales/buyer)

**info@budgies2bantams.co.za
www.budgies2bantams.co.za**

Proud sponsor of the
Southern African Show Poultry Organisation

Free Classified Ads

2 Empisal double bed knitting machines
with instruction manuals and numerous
patterns. R1 000 each. Midrand area.
Susan 083 400-7045.

Bird cage, strong, can be used horizontal
or vertical 1,5 m x 2,5 m. With pipes where
legs can be inserted if horizontal, to lift it
high strong iron frame. Strong bird mesh
R900. Elaine Meyerton 083 286-4423.

PROPERTY FOR SALE/TO LET/WANTED

Benoni (Petit): To let: 1 bedroom cottage
on edge of dam. For nature lovers only. No
children but pets allowed. Ideal for single
male or couple. Secluded and private. Lapa
and double carport. Gas & solar geysers.
R4 500 plus elec & water. Occupation
immediately. Maryna 082 744-4191 / 011
965-0022.

Nigel: Bothasgeluk AH. Lovely vacant
smallholding next to Balfour road. Nice
view. R160 000 Martin 083 957-2526.

Benoni: Fairleads: 5 well built stables, tack
room, feed room and storage for fodder
under cover. 5 small paddocks and two
large free range paddocks, walled and
fenced ranch style. To rent R6 500 per
month. Experienced groom can be
arranged. Extra. Call Vic 082 773-1057.

Randburg: Plot to rent in Homestead Rd,
Farmall, Randburg. 5 bedroom, 3 bathroom
house, double garage, carport, workshop, 3
maids' rooms on a 2,4 hectare piece of
land. Electric fence around the property,
with a bar and swimming pool. R19 000 per
month. Contact 082 886-0882.

Kameeldrif Estates: 1,05 ha north-east of
Pretoria. R3,3million. Main: 3 bedroom, 2
bathroom house with pool (235m²). 1
bedroom cottage (double storey) with 1 full
bathroom (120m²). Viewing decks on top
floor. Workshop/shed (240m²) with
separate kitchen/sleeping area. Separate
single staff quarters. Landscaped garden
with irrigation. Borehole. Willie Cell 079

330-9027.

Randfontein: Smallholding te koop. 2
hektar plot met 3 slaapkamer, 2
badkamers, siltkamer, ontvangskamer,
studeer of naalderkamer groot
moterafdak vir 3 voertuie met stoorkamers
aan agterkant van afdak. Aangeplante
weiding op 1 hektar. Witbuffel en blokkie
lusern. Ou stewige huis met kombuis en
badkamer kompleet geteel ... vloer en
mure. Swembad. Boorgat met enkel fase
Eskom krag. Naby winkels en petrolstasie
en busstop vir skoliere. Randfontein
Hillside. Tel 083 650-3439. Prys R650 000.

Randfontein: 1,8 Ha. Main house: 3
bedrooms, 2 bathrooms, laundry, bar,
dining room and kitchen. Four additional
houses, rental income +/- R9 000 per
month, lots of additional space for buildings,
storage etc. 3 hen houses ready to start (+/-
1 000 hens), prepaid electricity, 3-phase, 2
boreholes (one in use, 7 471 lph), safe,
secured and walled, close to town. Mapogo
alarm system. Plot is known as "Chicken
Place" for the past 13 years. R1,5 million.
Contact Martie 082 828-3980.

Delmas: 4Ha plot 10km from Delmas, 3
bedrooms, double garage, good soil plenty
water. POA. Phone 082 969-6959.

Gardenvale/Kliprivier: Country living
/business investment (chicken farm) R2,6
million. Secure, neat, modern facebrick
style farm, 5 big bedrooms, 3 bathrooms,
modern chef's kitchen, open plan diner,
study, lounge, spacious loft, 2 x cottages,
borehole, 3 phase Eskom power, stables,
approved plans for chicken broiler
business, fully fenced, tar road 15 minutes
from Alberton. Chicken business plan +
quotes and building plans available, deed of
sale R 1 000 000, deposit option. Contact
Anton 076 778-4091.

Henley on Klip: Land for sale, 2 000m², 1
bedroom cottage in tranquil village for
R450 000. Call Chris 082 799-3102.

Vrededorst: Gebou met 4 woonstelle, 2
winkel lokale, 2 toesluitgarages, 2 carports,
stoorkamer, buite toilet R1,2 mil. Miems
076 522-3187 of 072 153-8776.

**Sunshine
Chicken
Abattoir**

For the BEST service you'll get!
We slaughter for the smallholder
Fresh & Frozen Wholesale & Retail Chicken

083 762 3299
www.sunshineabattoir.co.za
Plot 49, 5th Avenue, Rietkol, Delmas
Farm chickens for sale for your home or business

SLASHER
072 153 8776

- 1.2m wyd
- Sonder PTO
- 1.5m ook beskikbaar

R6 000

**Nethout
Bykaste**

Fanie
083 391 9867
nethout1@gmail.com

WIRE WORX

Suppliers of:

- BARBED WIRE
- NETTING WIRE
- WELDED MESH
- GALVANISED WIRE
- STANDARDS & DROPPERS
- B GRADE WELDED MESH
- GATES, POSTS & STAYS
- DIAMOND MESH WIRE

Single Barbed Wire 845m = R525
We only sell quality products!

Kerry: 084 840 0409
kerry.wire@hotmail.com

DIARY

ATTENTION CRAFT MARKETS, CLUBS ETC: If you would like details of your events included in the Diary, please fax or email your information to the Editor. For non-commercial enterprises this service is FREE.

NOTE: FARMERS' & CRAFT MARKETS. For a listing of REGULARLY HELD markets and fairs please see the separate section on page 55. Only markets that are held infrequently are now listed in this calendar section.

Every Sunday

Cattle drive with City Slickers breakfast, Diamond X Cowboy Ranch, near Cullinan. Call Rudan on 082 410-3180

horses@diamondx ranch.co.za, www.diamondx.co.za., R360 per person.

Mnandi Methodist Church, 09:00, Mnandi Centre, cnr Tulip and Short Streets, Jen 012 651-5509. Gail 072 477-0708., A small community who worship together. We have a Youth and Children's church.

Premier Mine Presbyterian Church, Lower Oak Ave, Cullinan. Garden of Remembrance (Columbarium), 079 060-9990 or 012 734-1640, Worship and Sunday school. Holy Communion for all on the 1st Sunday of every month.

Every Monday

Alcoholics Anonymous. 'Courage to

Change' Group meeting, 19:30, Benoni Agricultural Holdings, Marcus 082 042-7730. Warren 082 335-0049. Glen 072 239-3024., If you want to drink – that's your problem! If you want to stop – that's our problem! No fees; no dues; just concerned fellowship.

2015

September

1-7: National Arbor Week

5: Last Quarter

5: Summer Course for beginner

beekeepers, final intake day at 186 Uys St, Rynfield A/H, Benoni. Commences at 09:30

next door to Highveld Honey Farm. Contact course convener Peter Clark at 011 362-2904 for further details. 5: Bee Course, Beeware, 298 Witch Hazel Avenue, Eco Square, Unit 20, Centurion. Phone 012 771-4288 6: Dog walk for Border Collie Rescue at Smuts House Museum, Jan Smuts Avenue, Irene. Contact Cheryl 083 376-1734 or info@smutshouse.co.za. 6: Country Fair at Uncle Tim's Centre. 40 High road, Brentwood Park. Contact 011 967-1816.

Free Classified Advertisements

Vredfort: Gebou, 4 lokale 2 kyk op straat. R580 000 + btw. Miems 076 522-3187 of 072 153-8776.

Vredfort: 3 winkels, R350 000. Miems

076 522-3187 of 072 153-8776.

Vredfort: Gebou + besigheid, R1,3mil. Miems 076 522-3187 of 072 153-8776.

Vredfort: Gebou + lee erf langsaan, R680 000. Miems 076 522-3187 of 072 153-8776.

Parys: Industriële gebou erf 10 000m². Gebou +/- 500m² R400 000. Miems 076 522-3187 of 072 153-8776.

Parys: Netjiese gebou in hoofstraat klaar huurders in gebou huur inkomste +/- R21 000pm. Miems 076 522-3187 of 072 153-8776.

Parys: huis met woonstel, groot hoek erf + boorgat R650 000. Miems 076 522-3187 of 072 153-8776.

Trekker te koop. Ford 3600. Kompleet nuut oorgedoen R45 000, gratis aflewering in Vaaldriehoek. Pieter 082 898-2642.

MWP
Maintenance With Pride
From changing a light bulb to building your dream home. For all your DIY needs give us a call. No job too big or too small.
Our Pride comes with our Quality
Milan 081 869 4726
www.mwpjhb.co.za

TRACTORS, IMPLEMENTS & PARTS

Hammermeule en kunsmis strooier. R7 000 elk. Kontak Hannes 083 254-4306 Vanderbijlpark.

4 X 4 Yanmar tractor with slasher and grader. Very good condition with a full service manual. 083 302-0199

Bredell's Leading Mower Shop
S.M. LAWMOWERS
SERVICE, REPAIRS & SPARES FOR ALL MAKES
Lawnmowers, Brushcutters, Construction Equipment, etc.
All 2- & 4- stroke oils from 125mm - 250 in stock
Ride-ons our speciality
SHOP 011 963 0040
MILAN 074 117 5141
NOW AT: 272 3rd Avenue, Bredell

ELCO STEEL DEALERS
011 362-1551/2
011 815 2340/1
Cnr. Ermelo & Dagbreek Rds, Largo, Springs
sales@elcosteel.co.za
www.elcosteel.co.za Stockists of all Mild Steel

PALISADES

Panels	3m
0.6m high	R317-00
0.9m high	R391-11
1.0m high	R414-62
1.2m high	R463-00
1.5m high	R541-50
1.8m high	R586-30
2.0m high	R630-00
2.4m high	R759-81

Pales	Per m
0.6m	R13-00
0.9m	R17-00
1.0m	R19-00
1.2m	R23-01
1.5m	R28-00
1.8m	R34-00
2.0m	R38-00
2.4m	R46-00

Hot Rolled Sheet/Plate	each	Square Tube (6m)	1.6mm	2.0mm	Lip Channel	6m	9m	Square Bar	6m
2450 x 1225 x 1.6	R449-90	20 x 20	R67-92	R79-92	75 x 50 x 20 x 2	R199-92	R304-71	8mm	R56-04
2450 x 1225 x 2.0	R499-90	25 x 25	R72-90	R109-02	100 x 50 x 20 x 2	R229-02	R349-06	10mm	R57-54
2450 x 1225 x 2.5	R599-90	32 x 32	R108-48	R145-92	125 x 50 x 20 x 2	R249-00	R379-52	12mm	R69-48
2450 x 1225 x 3.0	R749-90	38 x 38	R139-86	R184-86	150 x 50 x 20 x 2	R279-00	R425-24	Flat Bar	6m
2450 x 1225 x 4.0	R1 032-77	50 x 50	R169-92	R239-88	175 x 50 x 20 x 2	R289-02	R440-52	20 x 3	R39-90
2500 x 1200 x 5.0	R1 207-20	76 x 76	R279-90	R359-94	200 x 50 x 20 x 2	R298-98	R458-43	20 x 5	R47-88
2500 x 1200 x 6.0	R1 590-00	100 x 100		R469-92				25 x 3	R46-50

Specials:
Chromadek (white 2 450 x 1 245 x 0.6mm) R289-79
Galvanised Fly Mesh (1 200 x 2 100) R290-85
Fibreglass (Bronze) R242-14
Prices include VAT
Also Available:
• Pipe • Rectangular Tube • Angles • Channel • Galvanised Sheeting
• Roof Sheeting • Window Sections • Expanded Metal • Purlines

Welding Rods
1.5mm
5kg
R121-98

We also do Beams, Big Angle & Plates for farm use. Your wish is our command

• PRICES INCLUDE VAT • A GRADE • PRICES SUBJECT TO CHANGE DUE TO NATIONAL STEEL PRICE INCREASE • SUBJECT TO AVAILABILITY • E&OE •

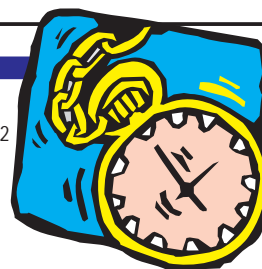
DIARY

7-11: Small Stock Management Course, ARC Dairy Science Centre, Irene. Call Annetjie Loubser 012 672-9153 or aloubser@arc.agric.za.
7-9: Artificial Insemination for Cattle. Rothman Livestock Training Services, Irene. Call Andy 082 770-0480, Norman 082 547-7949 or Di 082 772-1208. www.rltsafrica.com.
7-10: Artificial Insemination for Sheep. Rothman Livestock Training Services, Irene. Call Andy 082 770-0480, Norman 082 547-7949 or Di 082 772-1208. www.rltsafrica.com.
10: Northern Tuli Club's third production auction at Obaro, 107 Lavendar Road, Bon Accord, Pta. 1100 am. 20 Tuli bulls and 40 cows, some pregnant. Contact

Vleissentraal Bosveld, 015 491-3141
10: Pregnancy Awareness for Cattle. Rothman Livestock Training Services, Irene. Call Andy 082 770-0480, Norman 082 547-7949 or Di 082 772-1208. www.rltsafrica.com.
11: Calf Rearing. Rothman Livestock Training Services, Irene. Call Andy 082 770-0480, Norman 082 547-7949 or Di 082 772-1208. www.rltsafrica.com.
12: Bird walk at Smuts House Museum, Jan Smuts Avenue, Irene. 05:30 for 06:00. R50 per person includes bird/plant list. Contact Cheryl 083 376-1734 or friends@smutshouse.co.za.
12-13: Clivia Show at Garden World, Beyers Naude Drive. Contact Magriet or Corne on 011 956-3003, 011 957-2545 or

083 997-6142.
13: New Moon
13: Solar Eclipse
13: Antiques & Crafts Fair at Uncle Tim's Centre. 40 High Road, Brentwood Park. Contact 011 967-1816.
13: Ride the Rhenoster in the Crocodile Nature Reserve. A popular technically challenging annual mountain bike ride with privileged access to general off-limits areas. Contact Jenny Cornish, jcornich@mweb.co.za or 082 997-7880.
16: International Day for the Preservation of the Ozone Layer
19: Lavender and Herb Fair at Uncle Tim's Centre. 40 High Road, Brentwood Park. Contact 011 967-1816.
20: Dog walk for Senior & Disabled Dog Awareness at Smuts House Museum, Jan Smuts Avenue, Irene. Contact Cheryl 083 376-1734 or info@smutshouse.co.za.
21: First Quarter
21-20 Nov: Poultry Production Course, Buhle Farmers Academy, Delmas. Call 087 803-0563
22-25: Introductory Meat Processing Course, ARC Irene, Contact Annetjie Loubser aloubser@arc.agric.za; Tel 012 672-9153
23: Equinox
24: World Heritage Day
26: Victus Christi Farmers Market at Reformed Church, 24 Miles Sharp St, Rynfield, Benoni. Call George 081 381-0824 or info@victuschristi.org.za
27: Dog walk for Husky Rescue at Smuts House Museum, Jan Smuts Avenue, Irene. Contact Cheryl 083 376-1734 or info@smutshouse.co.za.
26: Snake Awareness and Venomous Snake Handling Course, Heia Safari Ranch, Plot 59 Beyers Naude Drive, Muldersdrift. Contact Johan 082 494-2039.
27: World Tourism Day
27: Aloe Valley Meander Market, 10h00 – 15h00, Serendipity Art Café, R511, -Doomrandjie.

Contact
Debbie 072 617-7517
28: Full Moon
28: Lunar Eclipse



October

4: Last Quarter
4: Spring Flower walk at Smuts House Museum, Jan Smuts Avenue, Irene. 08:00 for 08:30. R50 per person includes bird/plant list. Contact Cheryl 083 376-1734 or friends@smutshouse.co.za.
5 - 8 Jun 2016: Crop Production Course (nine months duration), Buhle Farmers Academy, Delmas. Call 087 803-0563
10: Bird walk at Smuts House Museum, Jan Smuts Avenue, Irene. 06:00 for 06:30. R50 per person includes bird/plant list. Contact Cheryl 083 376-1734 or friends@smutshouse.co.za.
10-11: Eastern Highveld Beekeepers Association annual honey show, Heckers Nursery, North Rand Rd, Beyers Park, Boksburg, from 09h00 to 16h00 daily. For details call Mike Alter 011 965-6040
11: Dog walk for Husky Rescue at Smuts House Museum, Jan Smuts Avenue, Irene. Contact Cheryl 083 376-1734 or info@smutshouse.co.za.
12-16: Poultry Production Course, ARC Dairy Science Centre, Irene. Call Annetjie Loubser 012 672-9153 or aloubser@arc.agric.za.
12-18: National Marine Week
13: New Moon
17: Christmas in October at the Bokkie Park, Southvale Road, Boksburg. Free Christmas Tree Hunt. Great shopping opportunity. Contact 072 713-3332 or info@craftsinthepark.co.za.
18: Dog walk for SPCA at Smuts House Museum, Jan Smuts Avenue, Irene.

Free Classified Ads

Sunshine dorsmasjien in werkende toestand R8 000. 082 292-5774.

Trekker te koop. Baie mooi Ford 4610, nuut herbou, nuwe bande R65 000, gratis aflowering in Vaaldriehoek. Kontak Pieter 082 898-2642.

MF trekkers te koop. MF35x R30 000, en MF135 R40 000. Kontak Pieter 082 898-2642 Heilbron.

Rotovator te koop. 1,8m, goeie toestand R16 000. Kontak Pieter 082 898-2642.

Welger Kas baler, goeie werkende toestand

R25 000. Kontak Vaas 081 092-7646 Bapsfontein.

VEHICLES & SPARES

Mags te koop. VW GTI mags 17" en 3 tyres R3 500. Kontak Pieter 082 898-2642.

Red 1994 Ford Meteor for sale. Engine, suspension recently overhauled, new battery. Still needs attention as well as new tyres. R15 000 neg. Contact John after 18:00 at 072 615-1819.

Quad for sale, Honda G200 5.5. Tow hitch and bull bars included. R2 800. Please contact 071 408-4403.

1.6 Golf engine. Automatic gearbox. Running condition. What offers? Kontak Jan 073 628-8729.

RUSSIAN GRASS

Save money on animal feed this winter...
...plant our

FAST GROWING EVERGREEN RUSSIAN GRASS

for more information contact
Merwe 072 604 5219
or visit our website
www.russiangrass.co.za



SUITABLE FOR ALL LIVESTOCK

082 415 4627
www.onedayoldbroilers.co.za
Chicken Little
Suppliers of one day old broiler chicks & feed!

Clovelly Poultry
• Day-old - 4-week old Layers
• Day old White Rock
Delmas
083 393 0935

Fruit Trees
Olive, peach, nectarine, plum, almond, apricot, walnut, prune, pomegranate, pecan nut, apple, cherry, pear, fig, quince, mulberry, lemon and grape vines.
Shade Trees
Vrugtebome
Olyf, perske, kaal perskes, pruim, amandel, appelkoos, okkerneut, pruimedant, granaat, druive, pekanneut, appel, kersie, peer, vy, kweper, moerbeï en suurtlemoen.
Skadubome
Vereeniging
Douw 084 506 5125

LIVESTOCK SALES

Auctions: Bronkhorstspuit - Every Tuesday

Gys Taute 083 253 6906

Delmas - 2nd & 4th Thursday

Johan Taute 073 204 7646

Belfast: Wednesdays • Ermelo: Thursdays • Standerton: Fridays

Vleissentraal Ermelo
017 819 1106
www.vleissentraal.co.za



BY G MURRAYHILL VEILINGS
A Member of Belle Vue Group of Companies
Veiling elke Saterdag & Dinsdag om 11:00
Alle Losgoed, Kleinvee en Beeste Welkom
Vir besprekings of meer inligting:
Frank 082 417 7011
Vissie 071 573 9263

DIARY, cont'd

Contact Cheryl 083 376-1734 or info@smutshouse.co.za.
18: Tree Walk in the Crocodile Nature Reserve. Name that tree! A walk into



Is your child tractor-mad? Make him a John Deere bed

wooded areas to observe trees. Contact Jenny Cornish, jcornish@mweb.co.za or 082 997-7880.

20: First Quarter

20-22: Artificial Insemination for Cattle. Rothman Livestock Training Services, Irene. Call Andy 082 770-0480, Norman 082 547-7949 or Di 082 772-1208. www.rltsafrica.com.

23: Pregnancy Awareness for Cattle. Rothman Livestock Training Services, Irene. Call Andy 082 770-0480, Norman 082 547-7949 or Di 082 772-1208. www.rltsafrica.com.

24: Dog walk for Chihuahua Get Together at Smuts House Museum, Jan Smuts avenue, Irene. Contact Cheryl 083 376-1734 or info@smutshouse.co.za.

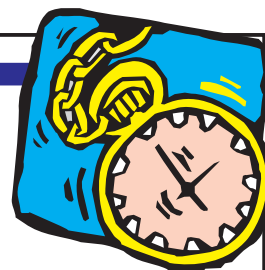
25: Aloe Valley Meander Market, 10h00 – 15h00, Serendipity Art Café, R511, Doornrandjie.

Contact Debbie 072 617-7517

27: Full Moon

30 – 1: Herb Happening weekend. Beautiful designer herb gardens, a herb market

including herbal products and specialist herbs, talks by herbal experts and guided walks through the labyrinth-inspired Herb Spiral, at the Healthy Living Herbs farm in Midrand. Other attractions include a perfumed rose garden, lavender lane featuring 15 different lavenders, a monastic garden and refreshments overlooking the gardens at the Herb Café. Entrance R40 for adults, R30 for pensioners, R10 for children under 12. For more information contact 011 464-0921 or 0861CHIVES or visit www.healthyliving-herbs.co.za or Chanell@herbfarm.co.za. Doonholm Herb Farm, is at 264 Summit Road (R526), Midrand (GPS S25° 55.800' E 28° 03.894')
31: Victus Christi Farmers Market at Reformed Church, 24 Miles Sharp St, Rynfield, Benoni. Call George 081 381-0824 or info@victuschristi.org.za
31: Snake Awareness and Venomous Snake Handling Course, Heia Safari Ranch, Plot 59, Beyers Naude Drive, Muldersdrift. Contact Johan 082 494-2039.



November

1: Dog walk for Husky Rescue at Smuts House Museum, Jan Smuts avenue, Irene. Contact Cheryl 083 376-1734 or info@smutshouse.co.za.

3: Last Quarter

3-6: Pig Production Course, ARC Dairy Science Centre, Irene. Call Annetjie Loubser 012 672-9153 or aloubser@arc.agric.za.

9-10: Animal Husbandry/Stockman for Cattle. Rothman Livestock Training Services, Irene. Call Andy 082 770-0480, Norman 082 547-7949 or Di 082 772-1208. www.rltsafrica.com.

11: New Moon

11-12: Cattle Nutrition/Feed. Rothman

honey
Direct & Fresh from the Beekeeper!
Pure South African
Best in the Land!
Special: 2.8kg tub R200
Hives available to pollinate your crop
Alberton
Tony 082 744 2424

Agrisolar
DIY solar geyser panels
• Multiple nozzle poly manifolds with 19mm black pipe
• Custom build size to your needs
• Full instructions
• Hail and frost proof
• Low pressure for farms, plots, factories etc.
see May edition
Richard
072 010 5545

GROW GARLIC.co.za
Grow your own garlic
egyptian pink seed
locally grown in the Magaliesburg valley
082 561 0013 www.growgarlic.co.za

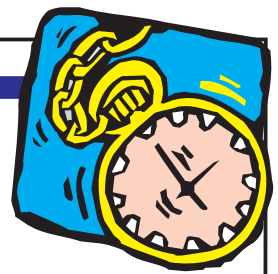
SCRAPER
• 1.5m wyd
• Geskik vir klein trekkers
R2 000
072 153 8776

Now available on the East Rand
Delivered daily (call for details) or you collect
Green Barley Feed
The NEW way to feed horses*

- Very nutritious
- Full analysis on request
- Healthier animals
- More energy
- Reduced vet bills
- Organic and pure

Save on your overall feed bill
Knox Barley Feed *Also ideal for ALL Livestock & Poultry
Call Lyle 082 319 5301 or Trish 082 496 3174

DIARY, cont'd



Livestock Training Services, Irene. Call Andy 082 770-0480, Norman 082 547-7949 or Di 082 772-1208. www.rltsafrica.com.
 15: Wildflowers and Grasses in the Crocodile Nature Reserve. Contact Jenny Cornish, jcornish@mweb.co.za or 082 997-7880.
 19: First Quarter
 19: Summer Graduation Ceremony, Buhle Farmers Academy, Delmas, Call 087 803-0563
 23-25: Artificial Insemination for Cattle. Rothman Livestock Training Services, Irene. Call Andy 082 770-0480, Norman 082 547-7949 or Di 082 772-1208. www.rltsafrica.com.
 25: Full Moon
 26: Pregnancy Awareness for Cattle. Rothman Livestock Training Services, Irene. Call Andy 082 770-0480, Norman 082 547-7949 or Di 082 772-1208.

www.rltsafrica.com.
 27: Calf Rearing. Rothman Livestock Training Services, Irene. Call Andy 082 770-0480, Norman 082 547-7949 or Di 082 772-1208. www.rltsafrica.com.
 28: Christmas Market at Groenvoer, 410 Olifantsfontein Road, Midrand. Call Cathy 011 314-1211
 28: Victus Christi Farmers Market at Reformed Church, 24 Miles Sharp St, Rynfield, Benoni. Call George 081 381-0824 or info@victuschristi.org.za
 28: Snake Awareness and Venomous Snake Handling Course, Heia Safari Ranch, Plot 59, Beyers Naude Drive, Muldersdrift. Contact Johan 082 494-2039.
 29: Dog walk for Husky Rescue at Smuts House Museum, Jan Smuts avenue, Irene. Contact Cheryl 083 376-1734 or info@smutshouse.co.za.
 29: Aloe Valley Meander Market, 10h00 – 15h00, Serendipity Art Café, R511, -Doomrandjie.
 Contact Debbie 072 617-7517

December

3: Last Quarter
 3: Carols by Candlelight at Garden World, Beyers Naude Drive, Muldersdrift. Contact Magriet or Corne on 011 956-3003, 011 957-2545 or 083 997-6142.
 11: New Moon
 6: Dog walk for Dogs For Cats at Smuts House Museum, Jan Smuts avenue, Irene. Contact Cheryl 083 376-1734 or info@smutshouse.co.za.
 12: Victus Christi Farmers Market at Reformed Church, 24 Miles Sharp St,

Rynfield, Benoni. Call George 081 381-0824 or info@victuschristi.org.za
 18: First Quarter
 22: Solstice
 25: Full Moon
 26: Dog walk for Dogs For Cats at Smuts House Museum, Jan Smuts avenue, Irene. Contact Cheryl 083 376-1734 or info@smutshouse.co.za.

Simple Irrigation Solutions
 Supply & Installation of:
 Borehole Pumps
 Booster Pumps
 Submersible Pumps
 Irrigation Systems
Paul 082 306 0584
Delmari 079 373 1958
simpleirrigation@gmail.com

JLB GAS INSTALLATIONS
 • GAS WATER HEATERS
 • PLUMBING
 • FIRE PLACES
 • BRAAIS
 • STOVES
 • HOBBS
 Registered LP Gas Installer
JAN-ELLIS 082 739 2548
BRUCE 072 635 8820
jlbgas.installations@gmail.com

GREEN'S INDUSTRIAL SUPPLIES
 20 JULBERT ST, BENROSE
 MON - FRI 08:00 - 17:00
011 614 0295
076 667 5000

STIHL SALES & SERVICE

Service & Repairs TO ALL MAKES OF:
 • MOWERS
 • BRUSHCUTTERS
 • GENERATORS
 • PUMPS, ETC.

We stock a wide range of gardening tools & requisites

GAUTENG SMALLHOLDER
 Having difficulty finding a copy of **SMALLHOLDER** at your local store?

Subscribe...!
 ...and get it monthly by post for a year (12 editions) **Only R210.00 per year!**
 Simply complete the coupon below and mail it with your payment

Please post me the *Gauteng Smallholder* for the next 12 editions. My cheque/postal order for R210.00, made payable to **BOWFORD PUBLICATIONS**, is enclosed.

Name:
 Tel: e-mail:
 Postal Address:
 Code:

Please make cheques or postal orders payable to BOWFORD PUBLICATIONS (PTY) LTD (not the Smallholder)
 Post coupon & payment to: Subscriptions, Box 14648, Bredell 1623,
 or phone 076-176-7392 for our banking details should you prefer to do an electronic transfer.

Regular Gauteng Farmers' Food Markets

NOTE: This is a listing ONLY of markets held to a regular weekly or monthly schedule. Markets held less frequently are listed in the DIARY section of the magazine and we urge readers to check each month for dates and events of interest.


We would like this list of food markets to be as comprehensive as possible. If you know of farmers' food markets that are not listed here, please email us the contact details of the organisers, and details of the market. Only FOOD markets are included.

Similarly, if you know of markets in this list that have CLOSED please inform us so that we can delete incorrect or outdated information.

We invite you to tell us of your experiences when visiting these markets so that we can better inform our readers. Were they as advertised?

Was the produce on sale plentiful, well-priced, well-presented and fresh? Email your comments to gautengsmallholder@gmail.com

DAY	WHAT	WHEN	WHERE	WHO TO CONTACT	WHAT TO EXPECT
Thursday					
Every Thursday	Bryanston Organic & Natural Market	09:00 to 15:00	Culross Road (off Main Road), Bryanston.	Konrad or Glenda 011 706-3671 or glenda@bryanstonorganicmarket.co.za	Quality hand crafted goods, unique art and fresh organic and naturally grown produce
Friday					
1st Friday	The Shed Night Market	18:00 to 22:00	109 Malcolm Road, Randvaal	Felicity 073 232-0017 or 081 011-9456	Food & craft market.
Saturday					
Every Saturday	Wholefood Country Market	09:00 to 14:00	Sawasdee Exotic Nursery, cnr Main & Zinnia Roads, Kyalami	Robyn 083 311-4768 wholefoodmarket@gmail.com	Variety of organic & homemade foods.
Every Saturday	The Shed Food & Craft Market	08:00 to 15:00	109 Malcolm Road, Randvaal	Felicity 073 232-0017 or 081 011-9456	Food & craft market.
Every Saturday	Pretoria Boeremark	05:30 to 09:30	Pioneer Open Air Museum, Silverton.	012 804-8031 or 082 416-3900 blinsga@lantic.net	Fresh produce and traditional bazaar treats like jaffles, kailings with pap and boerewors rolls.
Every Saturday	Bryanston Organic & Natural Market	09:00 to 15:00	Culross Road (off Main Road), Bryanston	Konrad or Glenda on 011 706-3671 glenda@bryanstonorganicmarket.co.za	Quality hand crafted goods, unique art and fresh organic and naturally grown produce
Every Saturday	The Hazel Food Market	08:00 to 14:00	Greenlyn Village Centre, cor Thomas Edison & Mackenzie Sts, Menlo Park, Pta	Rietha 083 554-5636. www.hazelfoodmarket.co.za	Fresh produce straight from the producer. Coffee, eats on sale
Every Saturday	Walkerville Farmers Market	09:00 to 15:00	112 Main Road (R82), Walkerville.	079 076-7680 info@wfm.co.za	Organic produce and Crafter's Market. www.wfm.co.za .
Every Saturday	Bosheuvel Fresh Produce	09:00 to 15:00	54 Glory Road, Muldersdrift	Mitch 082 553-2846	Meats and vegetables, delicacies, honey, cheese, brewery, crafter's market and children's entertainment.
1st Saturday	The Green Market	09:00 to 12:00	Pretoria Botanical Gardens 2 Cussonia Avenue, Brummeria, Pretoria	Melissa 083 562-5249	Products ranging from solar equipment to organic food
Last Saturday	Rynoue Plaas Mark/ Rynoue Country Market	07:00 to 14:00	Cnr Moloto Road (R573) and Protea Road Opposite Rooodeplaas Spar	Bruce 083 442-2552 Sue 082 891-7546 waydack@worldonline.co.za	Fresh vegetables, fruit in season, preserves, flower and plants, homemade food and cakes, arts and crafts.
Last Saturday	Fresh2U Farmers Market	08:00 to 14:00	Corner Main Street and High Street Modderfontein (behind 33 High Street)	Jane 083 376 5567 Chantelle 082 338 7818 wardek@iafrica.com	Over 50 stalls. Fresh produce, home made goods, plants, food and more.
Sunday					
Every Sunday	Fourways Farmers Market	10:00 to 15:00	Corner Montecasino Boulevard and William Nicol Drive, Fourways	011 465 0827 www.ffmarket.co.za	Get your groceries...In the garden!
Last Sunday	Aloe Valley Food, Arts & Craft Market	10:00 to 14:00	48, R511 Doornrandjies	012 669-3043 info@serendipitycafe.co.za www.serendipitycafe.co.za	Community market to promote local business



The book that every smallholder needs

Infrastructure (fencing, septic tanks, irrigation etc)
Livestock, Crop Production, Pasture Management
Farm & Garden Machinery, Legislation, Home Preserving ... and much more!

Only R180-00 VAT and p&p incl

34 chapters, fully-illustrated, 208 pages

To order call 011 979-5088 or email smallholderscompanion@mweb.co.za

SuperSmalls

ONLY R120 PER ADVERTISEMENT (25 WORDS)

Conditions:

1. Small advertisements that do not qualify for FREE CLASSIFIEDS: PRODUCE, FODDER, PLANTS, LIVESTOCK & WANTED ADS.
2. Cost: R120-00 per 25 words or part thereof. Additional words chargeable at R1-00 per word.
3. Payments to be made to BOWFORD PUBLICATIONS (PTY) LTD, Nedbank Northmead, Account 1948 073 099.
4. Use your telephone number as reference on your payment.
5. Advertisements will only be published on our website and in the magazine when paid for.
6. The Publisher reserves the right to edit or omit advertisements at his discretion.
7. It is the Advertiser's responsibility to ensure we have received the advert and payment.
8. Services do not qualify for SuperSmalls. Please see our business rates on page 1.

USE THE SuperSmalls FOR:
PRODUCE, PLANTS, ALL ANIMALS &
PETS including HORSES, POULTRY,
AND WANTED ADS.

USE THE COUPON BELOW FOR SuperSmalls

Tel:

DEADLINE for submission: 15th of the month prior
FOR ENQUIRIES TEL 011 979-5088

Send your advertisements and PROOF OF PAYMENT to:
BY FAX: 086 602-3882
BY POST: Box 14648, Bredell 1623
BY EMAIL: gautengsmallholder@gmail.com
BY HAND: 370 da Costa Dr, Bredell, Kempton Park

1 WORD (BLOCK CAPITALS) PER SPACE, PLEASE

FREE CLASSIFIED ADVERTISEMENTS

Conditions:

1. Only private advertisements for used or second-hand items accepted. COMMERCIAL and BUSINESS advertisers should refer to our rates on page 1, and those selling PRODUCE, PLANTS or LIVESTOCK OF ANY DESCRIPTION should refer to the SuperSmalls coupon above.
2. Only ONE insertion per application, and one category per coupon.
3. No DEALERS or AGENTS or COMPANIES permitted in the free classified section..
4. No ANIMALS (including HORSES), PETS or POULTRY permitted as free classifieds
5. No WANTED ads will be accepted as free classifieds.
6. No SERVICES will be accepted as free classifieds.
7. Classified advertisements may only be submitted for three consecutive editions.
8. The Publisher reserves the right to edit or omit advertisements at his discretion.
9. It is the Advertiser's responsibility to ensure we have received the advert.

USE THE COUPON BELOW FOR FREE CLASSIFIED ADS

Tel:

DEADLINE for submission: 15th of the month prior
FOR ENQUIRIES TEL 011 979-5088

Send your Classified advertisements to us:
BY FAX: 086 602-3882
BY SMS: 074 854-0197 ONLY
BY POST: Box 14648, Bredell 1623
BY EMAIL: gautengsmallholder@gmail.com
BY HAND: 370 da Costa Dr, Bredell, Kempton Park

1 WORD (BLOCK CAPITALS) PER SPACE, PLEASE

Redundant stuff

In my cupboard the other day I found a hat box, with an interesting item inside, which got me thinking about the products I have used that were introduced, and which are now redundant, as well as products that were redundant, but which have made something of a comeback. And that, in turn, got me thinking about which of the redundant products were the most short-lived of all.

But first, for my younger readers who won't know what I'm talking about, a hat-box is an ornate circular cardboard box fitted with a sturdy cord handle, printed on the outside with the name and style of the milliner (for that is what a hat-maker is correctly styled) in which lady purchasers (and presumably gentleman purchasers of homburgs, trilbys and toppers, too) would carry home and store their purchases.

Milliners probably still supply their purchases in hat-boxes ~ certainly the smart ones in London, Paris or Berlin. I have no way of knowing for certain, because my hats are bought from Cape Union Mart, made of leather. And they come supplied in a plastic bag.

My hat-box contained not a hat, but my old Polaroid camera. This, when I bought it, was the very apogee of modern photography, giving the user the ability to take photographs and print them out (actually, you developed them) on to small squares of shiny cardboard ~ instantly. Well, actually, it took a couple of minutes, and in cold weather the process was helped along by enclosing the cardboard and its coating of developmental jelly in folder made of two sheets of aluminium plate and placing it in one's armpit to get warm.

Polaroid pictures were quite expensive, so one tended to use the camera only for special occasions, and for those when standing about with a folder made of aluminium under ones arm would not be misconstrued as in any way deviant. And the pictures themselves did tend to fade and change colour with time.

So here's the thing: Polaroid instant cameras are not on my list of redundant stuff! Modern versions are now again available from the original manufacturers, to satisfy the one glaring deficiency in this modern Instagram, cellphone camera, selfie era: The ability to print, in the moment, a lasting memento for one's subject or for one's wallet or album.

Polaroids are like vinyls, I guess. Older folk like me remember vinyls by their proper names: records. 78s, 45s, seven singles and LPs, the latter often "stereophonic".

For some extraordinary reason records are enjoying a comeback with youngsters liking the hisses, pops and crackles that we spent hours trying to eliminate with record cleaning fluid and soft cloths and brushes.

Not so lucky in the home entertainment sphere were the reel-to-reel tape recorder and the cassette, not to mention videos. Remember when Betamax and VHS were vieing it out between them? All porn movies, illegal as they were in South Africa at the time, seemed to be recorded on Betamax, and people only seemed to ever own VHS machines.

Office machinery, too, underwent a revolution in my lifetime and it's here that the prize-winner for the most short-lived item of equipment resides: The teletex machine. A cross between an electric typewriter and a telephone, it was a faster and less noisy successor to the post-war-era telex machine on which I honed my typing skills in my first office job. But the teletex lasted only a few years before it was supplanted by fax machines. And guess what: THEY'VE gone, too!

Computers and the internet, of course, have a lot to answer for. Innovation has been breathtakingly fast. I like to tell youngsters about my first computer, which had the computing power of a pocket calculator and which required an upgraded memory card, about the size of a paperback novel, to enable me to run a spreadsheet named Supercalc. I particularly enjoy telling youngsters, with as straight a face as I can maintain, how our floppies were gradually replaced by stiffies (and then adding that in the publishing industry an item called an optical disk then followed, a miniature precursor of today's CDs).

Of course, out on the plots we've long given up on telephones. Here we traipse around, in and out the house as we please, jabbering away on any number of cellular devices and I find it quaint to see somebody in an office tied to his desk by a length of copper wire.

Now I'll just whip out my selfie stick and post a pic on Youtwit.



Your LOCAL Septic Tank People

Licensed by



**Quality Assured
Environmentally safe**

Suck Well

Septic Tank Pumping



Serving East Gauteng: Kempton Park, Benoni, Boksburg, Bapsfontein, Endicott & Vischkuil

083 469-4387 / 011 965-0366



WATER PLANT

turning your garden into a paradise
since 1982

Sundays from 09:00 to 15:00

Hartbeespoort: R512, near Pecanwood

Tel 0861 987 654 / 012 244 1324

Cell 083 407 7589 / Keith 076 719 8461

sh@waterplant.co.za

S 25° 46' 27.6" E 027° 50' 41.0"



WATER FEATURE PUMPS

1m

1,2m

1,8m

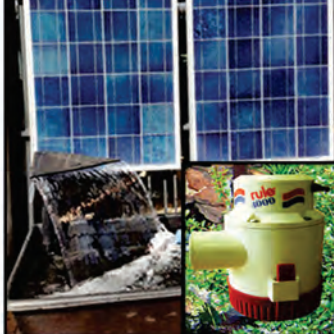
2m

6m

Hunter **RAIN BIRD**
The Irrigation Innovators



**Go Solar!!
Talk to us!!**



THE COURIER GUY
SERVICE AVAILABLE



Water Purification System



1 micron, 5 micron and carbon cartridges included

pool - pond filtration - pumps - pipe



www.waterplant.co.za