

GAUTENG SMALLHOLDER

SEPTEMBER 2018
HOW TO MAKE YOUR PLOT PROFITABLE

**Free magazine:
Take one!**

**Now also available
~ as published ~
ONLINE... go to
www.sasmallholder.co.za**



IN THIS EDITION:
Grow Millet: A Drought-resistant Foodstuff
Planning your Vegetable Plot
How to Prepare your Lawn for Summer
Bankrupt Bush Scare
... and much more...

More than 20 000 copies* distributed monthly throughout Gauteng

*including online readers at www.sasmallholder.co.za

Ndebele Appliances & COAL STOVES

24 CHURCH STREET
BRONKHORSTSPRUIT
1020

Tel: 013 932 1376

Email: ndebeleadmin@gramco.co.za

Web: www.ndebelestoves.co.za

ATLAS GAS GEYSERS



6L - R 1399
8L - R 1650
10L - R 1899

12L - R 2450
16L - R 2799
20L - R 3650

SUNBEAM SGE0-760S 5 BURNER GAS STOVE



R 7490

ATLAS 4 PLATE GAS HOB PI640STX



R 2690

ATLAS 5 PLATE GAS HOB PI950STX



R 3390

ATLAS 6 PLATE GAS STOVE

R 3990

ATLAS 4 PLATE GAS STOVE

R 2399



6 PLATE ALSO IN
BLACK

RING BURNERS



2 RING BURNER - R 120
3 RING BURNER - R 230
4 RING BURNER - R 390
5 RING BURNER - R 899

GAS BOILING TABLES

2 PLATE BURNER - R 1200
3 PLATE BURNER - R 1590
4 PLATE BURNER - R 1950



GAS STOVES

3 PLATE BURNER -
R 540



WHILE STOCK LASTS!

**DISCOUNT ONLY COUNTS IF YOU BRING OR MENTION
THIS ADVERT THE DAY OF YOUR PURCHASE!**

PUBLISHED BY

Bowford Publications (Pty) Ltd
Established 1985

(Reg No 2004/019727/07)

PO Box 14648, Bredell 1623

Tel: 011 979-5088

or 076 176-7392

Fax: 086 602-3882

website:

www.sasmallholder.co.za



facebook.com/gautengsmallholder

PUBLISHER & EDITOR

Pete Bower

email: gautengsmallholder@gmail.com

RESEARCH EDITOR

Vanessa Bower

email: vanessa.bower@mweb.co.za

GRAPHIC DESIGNER

Mark Hageman

email: graphics@gautengsmallholder.com

ADVERTISEMENT SALES

Pete Bower

email: gautengsmallholder@gmail.com

ADVERTISING RATES

(All Rates Full Colour, incl 15% VAT)

Full Page - R7 546

Half Page - R4 661

Quarter Page - R2 593

1/8 page - R1 372

Smaller sizes: R105 per col cm

(Minimum size - 4 col cm)

(Black only: colour rate less 20%)

Booking discounts

Payment lumpsum in advance.

3 insertions - less 10%

6 insertions - less 15%

(other payment and discount options are available)

Circulation

More than 19 000 copies* distributed free through outlets in the Agricultural Smallholding settlements of Gauteng and adjoining provinces.

* excluding on-line readers.

By Mail

To receive the *Smallholder* by mail subscribe for only R210 per year. See coupon in this edition.

Online Magazine

www.sasmallholder.co.za

Online Classified Ads

www.sasfox.co.za

Copyright

Title and contents protected by copyright. No part of this publication may be reproduced or stored in any form whatsoever without the prior written permission of the publisher.

Disclaimer

While every care is taken to ensure the accuracy of the information in this journal, neither the Editor nor the Publisher can be held responsible for damages or consequences of any errors or omissions. The Publisher does not stand warranty for the performance of any article or service mentioned in this journal, whether in an advertisement or elsewhere.

FRONT COVER

Revelling in it! A bee gathers pollen to take back to its hive.

COMMENT, by Pete Bower — Let calmness prevail



Regarding the land expropriation issue, there are two possible outcomes, and neither has a good ending for South Africa or her people, regardless of how important land restitution is.

Leaving aside the need or otherwise for a rewrite of Section 25 of the Constitution (which may indeed have a positive result, according to Thuli Madonsela, at least), the one view is that the ANC is using the expropriation without compensation (EWC)/constitutional amendment narrative as a populist vote-catcher ahead of the election next year. It knows full-well that even if a suitably crisp amendment to the Constitution were to be drawn up right now it will take until way after the election to be voted in and take effect. Therefore, goes this narrative, the ANC is merely playing for time, trying to negate the populism of Julius Malema's EFF (of which it is unduly scared) and possibly win back some lost EFF votes. Its hope is that, once it has won the election it can safely put the whole matter on the back burner and revert to the status quo as far as land reform is concerned.

Giving this argument some credence is the observation that the current ANC shenanigans around the EWC issue are as cack-handed as anything we have ever seen from the ANC, even by its own cynical, inept and corrupt standards.

For example, at the outset the government organised public comment sessions throughout the country, at which many thousands of people argued the need or otherwise for EWC and a constitutional amendment. With the process well under way, however, President Ramaphosa addressed the nation on television late one night, as ANC president, not president of the country, to tell us that the ANC had decided to forge ahead with EWC regardless, thus rendering the public comment process a farcical waste of time and money (as if we didn't know it would be).

Next, Afriforum obtained and made public a list of farms that, Afriforum claimed, the government/aka ANC had earmarked for EWC "as test cases". This resulted in a flurry of enraged comment and denials that the list was genuine, or that a list even existed, to the extent that agriculture minister Senzeni Zokwana described Afriforum's action as "an act of sabotage." You can therefore bet money that the list, or some of it in some form, is genuine.

And all the while a nasty thread of racism has been emerging, and has been nurtured, especially by the EFF. All the work of unification and non-racialism preached by Madiba pissed up against a wall...

And it is this emerging racism that is the problem with this scenario. For, even if events unfold as outlined above and the ANC lets the EWC matter fade after the election, the EFF isn't going to stop pushing for it, with a lot of populist song and dance, thus nurturing and fanning the destructive little fires of racism and resentment that are now smouldering throughout the country.

The other view is that the ANC, whether pushed into it by the EFF or not, and whether it denies it or not, is hell-bent on removing land from its current (white) owners and handing it over without paying for it to new (black) owners. The ANC clearly does not have a grasp of the complexity of South African land ownership, financing and tenure. Leaving aside the fact that the ANC (and therefore the government) is hopelessly inept and corrupt when any transaction is remotely connected to money, confiscating (for that's what EWC is, however you dress it up) land from owners who have paid for it, or more accurately are still paying for it via their bonds, brings into play some heavy hitters in the economy, namely the banks. For as long as you have a bond to pay on any property, you don't hold the title to that land. Your bank does. Thus, when the government takes your land, it will actually be taking ownership from your bank.

Apart from the fact that the mere TALK of EWC has caused the property market to tank, if it ever becomes a reality there will quickly be no market left at all. In short, the banks will have lost the value of their asset, about which they will be displeased.

When that happens you can pretty much assume that what is left of the South African economy will disintegrate, the currency will become even more worthless than it already is, unemployment will increase, further hardship will prevail, and "service delivery" protests will become general anarchy.

Nobody can deny that there is an urgent need to redress the land issue but there are many other ways to do it without resorting to anything as destructive as EWC.

Thus, it's time for the banks to do some very tough talking to Ramaphosa, Malema and their teams, pointing out the extreme folly of their current trajectory, and suggesting strongly that now is the time to dial back on the current inflammatory rhetoric.

NURSERY BUSINESS CLOSING DOWN - Owner retiring



Selling entire outbuildings,
factories and equipment.

ALL TO BE RELOCATED

R1 450 000

- ~ Nursery related items
- ~ Pot manufacturing factory
- ~ Woodwork factory
- ~ Concrete works (stepping stones & ornaments)
- ~ Paint factory

Vehicles (prices to be negotiated)

- ~ Mitsubishi Fuso tipper 4 ton
- ~ JMC tipper truck
- ~ Hyundai H100 bakkie
- ~ Case 60XT skidsteer loader
- ~ Plant trailer



2 x Steel Sheds (all sides clad)

1 x 15.5m x 12.5m @ R95 000-00

1 x 24.0m x 9.5m @ R115 000-00

or both for R150 000-00

Contact Coenie: 084 606 0123

WES VOERE Feeds



**Proteïenlek
Winterlek
Soutblok
Boskos
Volvoer**

18 Hendrik Ave, Ventershof, Bapsfontein
Tel: 087 231 0304
bapsfontein@wesenterprises.co.za

**Gratis Aflewering binne
25 km Radius**

Oop op Saterdag!



Sekelbos Hout hier te koop

- ~Hondekos (Groot & Klein) ~Lusern & Eregrostis Bale
- ~Wildsvoer ~Beesvoere ~Lekke ~Vark voere
- ~Skaap voere ~Perd voere ~Hoender & Kuiken voere

Alle lekkes bevat Aalwyn





UniPumps Swimming Pool Pumps



0.25 kW @ R1 399
0.40 kW @ R1 699
0.75 kW @ R1 799
1.10 kW @ R2 049



STM 3
230V 0,75kW
@ **R1 899**
Max: 6 000 L/H
Max: 31 Metres



NPM 3 C
230V 0,75kW
@ **R1 929**
Max: 2 700 L/H
Max: 44 Metres



C.R.I. PUMPS



CRI Pump Set
JTS-3/07M
0,75kW 230V
@ **R1 799**

Max: 3 750 L/H
Max: 40 Metres



CRI Pump Set PEM-3N
0,37kW 230V
@ **R999**
Max: 1 600 L/H
Max: 40 Metres

CRI 4" Maxi Kit

Includes: Motor, Pump, Control Box, Cable, Rope, Baseplate & 2 Couplers

0.37kW + 60m Cable MK-1 @ R3 999
0.37kW + 50m Cable MK-2 @ R3 799
0.55kW + 60m Cable MK-3 @ R4 099
0.75kW + 70m Cable MK-4 @ R4 999
1.10kW + 70m Cable MK-5 @ R5 699



20mm x 30m @ R319
20mm x 50m @ R539
20mm x 100m @ R1 069

Look out
for the blue
inner!



2 200Lt:
@ R2 169

2 500Lt:
@ R2 479

5 000Lt:
@ R4 199

10 000Lt:
@ R10 499



UNI-Spray
@ **R32.90**

Radius:
3,0 to 5,5 m



2045A
Maxi-Paw
@ **R199.90**

Radius:
6,7 to 13,7 m



AZUD Modular 100 Filters
50mm Screen Filter 130 Micron
Max Flow 25 000 l/hr
@ **R347**



10" 3-piece Filter Set
(PP5U + GAC + CTO)
@ **R109**



20" 3-stage Big Blue
System @ R3 699



waterware

Pretoria

Pretoria North
256 Koos de la Rey Street
012 546 5900

Pretoria

Derdepoort/Roodeplaat
413, cor Bergzicht & Grensweg
Zambesi Drive East (R513)
082 335 4356

Centurion

Hennopspark
57 Jurg Avenue
012 653 1289

www.waterware.co.za

* Prices include VAT.
* Prices only valid while stocks last.
* Illustrations may differ from product.
* Terms and conditions apply.

tandem
LAWN INDUSTRIES
INTRODUCES:

STIGA
RIDE-ON MOWERS

BEAT THE RAND/DOLLAR PRICE INCREASE!

COMPLETE WITH:

- MULCHING KIT FOR LEAVES IN WINTER
- SIDE DISCHARGE FOR SUMMER
- 12 VOLT BATTERY CHARGER
- 1 YEAR WARRANTY

**Swedish
Premium
Quality
Since 1934**

TORNADO 2098 *CRAZY DEAL!*

- Powerful 16Hp Engine
- 38" 98cm Cutting Width
- Seven cut height settings
- Comfortable ergonomic features.



SAVE
R2 000
NOW:

R29 995



PARK 320

- Powerful 16 Hp Briggs & Stratton Petrol Engine

- 95-105cm Cutting Width
- 50:50 Articulated design for tight corner cutting
- Pedal controlled hydrostatic transmission for smooth power

SAVE
R12 000

NOW: **R64 995**

ESTATE 3098H

- Powerful 17Hp Briggs & Stratton Engine
- 38" 98cm Cutting Width
- Hydrostatic transmission with rear wheel drive
- 249 Litre grass collector



SAVE
R5 000
NOW: **R42 995**

TORNADO 3308H

- Powerful 21Hp Briggs & Stratton Petrol Engine
- 42" 108cm Cutting Width
- Hydrostatic transmission with rear wheel drive



SAVE
R6 000

NOW: **R39 995**

- Prices Include VAT
- Valid While Stocks Last
- E&OE

**SPECIALS END
Saturday
29th September'18**

**OPS RANDBURG
MR GREENFINGER
011 886 3316 / 7**

**OPS SANDTON
LIVINGSTONES
GARDEN & HOME
011 802 4822**

**OPS EAST RAND
PRECISION MOWERS
011 391 0708 / 0710**

**OUTDOOR
POWER
SOLUTIONS**

Expert Advice For Free
www.outdoorpowersolutions.co.za

**OPS WEST RAND
GP LAWNMOWERS
011 955 3610**

**OPS PRETORIA
LAWN MOWER CLINIC
012 323 1833 / 4 / 5**

**OPS VEREENIGING
ZIKIS OPS
016 422 4502**

**ALL MACHINES SOLD FULLY ASSEMBLED & TESTED • WARRANTIES SUPPORTED BY OPS DIRECTLY
QUALIFIED ADVICE • FRIENDLY BACKUP SERVICE • WORKSHOP • SPARES • ACCESSORIES**

Indigenous grass to be a Cat 2 invader?

Sir ~ I thought you might be interested to read about one of the proposed additions to the regulations and lists relating to the National List of Invasive Species.

The proposed legislation includes the listing of an indigenous (and water wise) grass, namely *Cynodon dactylon* (ordinary couch grass) as a new National Invasive Species.

The proposal is to make *Cynodon dactylon* a Category 2 species, which means it can



Couch grass (*Cynodon dactylon*) is often used to stabilise bare ground.

only be propagated, owned, transported or planted with a permit.

However, the grass is already widely planted in sports fields, parks, protected areas, along highways and across tourist resorts.

It is a valuable, drought-resistant, water wise grass species, which

has shown its merit during the drought in the Western Cape and other provinces. It has survived with a little greywater

irrigation, where the local buffalo grass and the alien kikuyu have died off.

Couch grass, or kweek, plays an important role in conservation, because it prevents soil erosion. It provides good grazing (particularly when young), is very useful as a lawn grass and is recommended for the protection of waterways. In traditional medicine it is used for indigestion and the treatment of wounds.

It is planted widely across

Continued on page 7

P & M Aircon
www.pmaircon.co.za
Servicing Cleaning Repairs
Free Quotes
New Installations
Gauteng and adjoining areas
We only use medical-grade sanitising chemicals to clean all air conditioning units.
073 696 8005 sales@pmaircon.co.za

The Editor welcomes your letters, comments and opinions, but reserves the right to edit and shorten as necessary. Senders' names and addresses must be included.

Afrikaans letters will be translated. Post mail to: Letters, PO Box 14648, Bredell 1623 or fax 086 602-3882 or e-mail gautengsmallholder@gmail.com



BREDELL GAS & HARDWARE
Hardware Spring Fresh Gas
Dry Cleaning
OPEN ON SUNDAYS 09:00-12:00
Bredell Shopping Centre
3rd Ave, Bredell Tel 011 396-1662

Wap
HIGH PRESSURE CLEANERS
Services and Repairs
Other services includes repairs to vacuum cleaners, high pressure systems (hot & cold) and floor care.
We offer :
• 30 Years' Experience
• Quick response time
• Competitive pricing
• Guaranteed workmanship
• On-site repairs
• Repairs to other makes and models as well
• Workshop facilities for bigger repairs
Contact : Gerda
082 738 7839

TOWER INDUSTRIES
Tired of maintaining the growth under your fence every 2-3 months?
Try **BUNDU**.
Lasts up to 24 months!
Products Available
Triclon
Springbok
Impala
Suburb
Browser
Kaput
Bromuron...
...and much more.....
Call Cornell: 082 858 3439
Email: cornellgrove@yahoo.com

GUSTO PUMPS CC
Water Specialists
THIS IS THE SIGN FOR WATER MANAGEMENT
We supply and repair all
PIPES, FITTINGS AND TANKS,
SUBMERSIBLE PUMPS,
BOREHOLE PUMPS,
SWIMMING POOL PUMPS,
& PRESSURE SYSTEMS.
At the best prices!
We are experts in water management. Our prices are very reasonable and our service is the BEST!
Drilling
Tanks
Pressure Systems
Submersible Pumps
Borehole Pumps
Tel 011 957 2588
Carina Krause
082 872 4143

Your Preferred Supplier of Agri-equipment, Spares & Consumables

- Herbicides, Pesticides*
- Poisons & Baits*
- Veterinary Pharmaceuticals*
- Veterinary Equipment

*In pack sizes
suitable for
smallholders!!

Coarse Salt
~ 50kg bags~

More than 100 years' experience

Clearance sale!! Everything must go!

A selection of tools, hardware consumables, irrigation fittings, brooms, seed, pesticides & herbicides and miscellaneous household & farm items, etc.



Agent for

FARMTRAC
TRACTORS

Simply reliable.

Spares available



Vetsak 5-tine Ripper



ALL SIZES OF
OFFSET DISC
HARROWS
IN STOCK



1,5m Rotavator



Krukowiak
Potato
Lifter

600 litre boom
sprayers



3 or 5 Row Benfarm
fine seed
vegetable
planters



500 litre fertilizer
spreaders



FALCON

Full range of Falcon
Slashers,
Haymakers,
Mowers
& Rotavators.

We stock
Falcon spares!



Tractor & implement spares

FALCON FARMTRAC Kubota Case IH

BREDAL

Full range of
Jo-Jo tanks

20ness Investments cc t/a **KONGSKILDE**

BENFARM

65 Unity Ave, New Modder, Benoni Tel 011 423-2801

Ronnie - 082 900-5400 Sales & Spares: Thomas - 074 362 6696

Admin & Accounts 072 740 9102

email 20ness@mweb.co.za Website coming soon!



50 KG Yellow Maize - Whole
50 KG Yellow Maize - Crushed

Also available in Bulk
Price on request



Anne-Marie - 082 945 7423
Jacinda - 082 789 4171
afribore@icon.co.za

SPEEDY AUTOMOTIVE SERVICES

Plot No 10, Garsfontein Weg, Grootfontein



REPAIRS DONE TO MOST VEHICLES CARS, TRUCKS, TRACTORS ETC

Wheel Bearings ~ CV Joints ~ Suspensions ~ Brakes

Timing Belt/ Chain Replacement ~ Clutches

Regular & Major Service



WORKSHOP NOW OPEN

Frikkie: 083 660 8969

Jacques: 082 377 7432

ROOF SHEETING



Buy direct
from factory

ADVANTAGES:

- Shatterproof, Weather & Hail Resistant
- UV Protected
- Over 70% Light Transmission
- Product is 2,5mm thick
- Domestic & Industrial
- Easy to Install - DIY
- Choice of 4 Colours
- 7 Year Guarantee
- Cheaper than Fibreglass

We Deliver

IDEAL FOR:

- Patios
- Carports
- Zozo Huts
- Hot Houses
- Pool Houses
- Factory Skylights, etc



PLEASE CONTACT
Sandra 083 233 3820
info@4eversheeting.co.za
www.4eversheeting.co.za

4EVER SHEETING
POLYETHYLENE ROOF SHEETING

Strategy needed to control bankrupt bush

The encroachment by the indigenous invader *Seriphium plumosum* or bankrupt bush (Afr: bankrotbos) has reached such

alarming proportions that a number of institutions have come together to try to develop a strategy to control its spread.

It is estimated that about 10 million ha in South Africa have been infested by bankrupt bush, which endangers sustainable

grassland production, animal production, food security and biodiversity. Bankrupt bush encroachment can turn a profitable fodder source into a degraded piece of land on which sustainable livestock production is no longer possible.

The Dept of Agriculture, Forestry & Fisheries (Daff), in
Continued on page 8

COUCH GRASS

From page 5

South Africa for a number of uses. If it becomes a Category 2 invasive, most government ministries, national parks, national botanical gardens, municipalities, landowners, sports administrators, landscapers and gardeners across the country will have to buy a

R100 permit (which takes six weeks to get) to make their indigenous lawns on their property legal!

And, every time a landscaper wants to plant indigenous and water wise couch grass or any of its cultivars, they will need to obtain a R100 permit.

For many environmentalists, conservationists and green industry professionals, the concept of indigenous *Cynodon dactylon* becoming a Category 2 invasive species is just unworkable and there have been many submission made to the Dept of Environmental Affairs to voice their protests.

Let us hope good sense will prevail.

Betty Abrahams
Boschkop

Advanced Shooting Products
Bullets for Handguns & Rifles
9mm bullets specially designed for home defence
Bullet expands to 17mm on penetration
Find us on Facebook
www.advsp.co.za
email: louise@adv-sp.com

BALE & SELF FEEDERS, CREEP FEED & KRAAL PANELS, SORTING GATES, LAMBING PENS, LOAD RAMPS...



BUY FACTORY DIRECT & SAVE

GET A PRICE LIST ON: staalplaas.co.za
FRIENDLY SERVICE: CALL DEON 078 800 1465
Cnr N3 & R23, Heidelberg South Division of Strongman Metal Tools

RAYTON

GPS: S25° 46' 43.6" O28° 32' 57.8"



GAUTENG NOORD SIMMENTALER VEILING

SATERDAG, 1 SEPTEMBER 2018 om 11:00
WILLEM PRINSLOO MUSEUM - RAYTON

AANBOD: 30 X BULLE
25 X VROULIKE DIERE



GAUTENG NOORD SIMMENTALER SKOU VANAF 31 AUGUSTUS 2018

NAVRAE: Carel Wessels 082 826 8400, Hannes Hugo 082 823 7631, Moolman Mentz 083 229 2500
AFSLAERS: Nico Langeveldt 082 331 2684
Vir volledige besonderhede en voorwaardes besoek
gerus ons webtuiste: www.bkb.co.za

BKB
VAN WYK



Bankrupt bush.

From page 7
collaboration with partners from the three spheres of government, as well as universities, The SA National Biodiversity Institute (Sanbi), and various agriculture unions and NGOs are currently working on the development of a management strategy for bankrupt bush in South Africa. This strategy is hoped to improve veld productivity, biodiversity, and food security. It will soon undergo public

consultation and participation in different provinces and there is an open invitation to interested and affected individuals and organizations. On 4 September, there will be a provincial public consultation workshop held at the Sanbi Education Centre, Pretoria Botanical Gardens at 09:00. On 21 September there will be a national consultation held at the same venue. Smallholders and small farmers who would like to attend are invited to contact Lydia Bosoga on 012 319-7686.

Bankrupt bush is a sprawling, much-branched, grey shrub growing to a height of approximately 60 cm. It has slender, wiry, softly woody branches. Short shoots are covered with greyish, woolly, clustered leaves, which are minute, tufted and pressed to the stem, giving the plant a granular appearance. The small brown to pale purple flower-heads occur at the tips of the shoots. Plants often have white fluffy galls which might be mistaken for flowers. The plant has many adaptations to survive long dry summers, such as the light colour of the shrub that reflects sunlight and the woolly covering and small leaves that reduce water loss. These adaptations are supported by a root system which may vary from 1 m² around the plant and up to 1,8 m deep.

In the central grassland areas encroachment has already led to the bankruptcy of many stock farmers, hence the plant's common name. Bankrupt bush is unpalatable to livestock and is very difficult to control once established. The tiny wind-dispersed seeds will spread from single plants or small populations into adjacent areas, irrespective of the condition of such areas. In many cases, farmers have

Continued on page 10

HYDRO SOLUTIONS

WATER AND SOLAR TECHNOLOGIES

Solar Borehole Set Special!

Harness the power of the sun.

- Set includes Pump, Motor, Control box, Solar Panels and Level Sensors.
- Maximum Head: 50m
- Maximum Flow: 1200 l/h
- 300Watt panel Included

NOW ONLY!
R11990 Incl.



Borehole Complete 3" Set Special!

- Set includes: Motor, Pump, Control Box, Cable, Rope, Baseplate, 3 x Pipe fittings
- Maximum Head: 42m
- Maximum Flow: 3000 litre/hour
- 0.25KW Motor
- Optimum Flow: 1500 l/h @ 35m

NOW ONLY!
R3490 Incl.



Contact us for
precise advise and
great service.

Dirty Water Drainage Pump

Ideal for pond and dirty water applications.

- Can handle solids up to 10mm
- Max Flow: 7200 litres / hour
- Float switch included
- 7 Meter max head

NOW ONLY!
R1299 Incl.

Free delivery
straight to your
site. (Gauteng Only)



VISIT OUR FACTORY STORE IN PTA EAST

012 807 3256 sales@hydropumps.co.za

www.hydropumps.co.za

CONVENIENT ONE-STOP COUNTRY SHOPPING

GROENVOER

Feed • Vet Products • Saddlery • Gumpoles • Buckets • Bins • Brooms • Chicken feeders & drinkers
Fodder • Eragrostis • Lucerne • Oat hay • Teff • Country Markets • Groom Training • Farm stall delights

Quality Animal Feeds



Since 1970

GROENVOER Premium Quality Animal Feed

- Always Available, Always Freshly Mixed
- Formulated for SA conditions
- Organic preservatives
- Direct from factory to feed room



Horse Feed is our Speciality

Arbour Month
Spring time
is here!



2-DAY GROOM TRAINING COURSE

6 & 7 Nov 2018
8.30am – 3.30pm

R1500 (Groenvoer feed clients pay a discounted rate of R1000)

The course covers basic feeding, grooming, tack and vet care. Invest in your groom and enjoy a more efficiently managed yard.

Limited places available! Book Now



SEPTEMBER 2018 SPECIALS!



Rhino 16lt Pressure Sprayer
R315 - Save R100

Liquid Molasses 5l
R40 - Save R31

Increase fodder palatability



Kan/Lan 28% Fertilizer 50kg
R310 - Save R100

Slow Feeder Bale Net
R165 - Save R35



Madaji Milk Cream 500g
R55- Save R27
Great for chapped hands & feet

Collect your **FREE** indigenous Spekboom when you buy from us this month!
(Water wise, Carbon-absorbing, Environmental Miracle Worker, Edible for cattle, goats & game)



PROUDLY PRESENTING THE SA GRASS ROLL SAVER!

- Recoup cost within months - Money saving
- Comfortably holds 1.2m grass roll
- Only needs two people for easy loading
- Long Lasting - Hot-dipped Galvanised

SA PATENT NO. 2012/05600
SA REGISTERED DESIGN NO. A2012/01178 & F2012/01177
Infringers will be Prosecuted



"Enjoying the quality and the convenience of an awesome feeding system. My horses are so loving it." • LINDA MAVRIKIS – RYNFIELD

Stockists of:



ORDER TODAY!

Speak to: Cathy, Irene, Jenny & Philenie

011 314 1211 082 545 9277
011 314 1212 076 451 7771
011 314 1156 076 451 7799

email: groenvoer@mweb.co.za
web: www.groenvoer.co.za

Address: Olifantsfontein Rd (R562), Midrand, Gauteng, SA



BLANKET WASHING

Quick, thorough & affordable

All prices Vat inclusive E&OE - Generator power - No outages

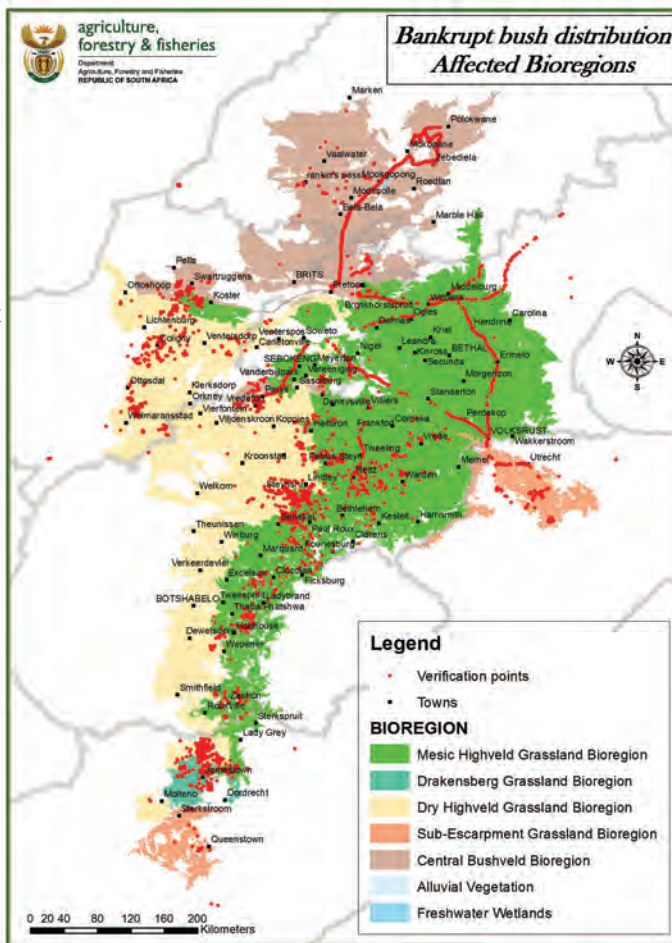
NEWS

From page 8

lost almost 100% of natural veld, despite the fact that millions of rand have been spent to control or eradicate the plant.

It is difficult to understand the main reasons for the huge spread and densification of this plant, especially over the past five to ten years, but researchers suspect that elevated carbon dioxide levels may have favoured its growing conditions.

Various control methods are available for bankrupt bush and recommended, depending on a number of factors, for example plant density, cost effectiveness and timelines. Chemical control is



the most effective recommended method, while burning and manual clearing of the shrub lead to higher densities if not properly managed. Manual clearing and chemical control can, however, become economically unfeasible. All these control measures are probably temporary, with re-invasion inevitable. Thus, aftercare needs to focus on the control of seedlings.

Follow up work is essential as it is feared that this problem may never be completely removed.

STOP THIEVES

Outdoor Wireless Alarm

Protect Buildings, Livestock etc

Complete system with 4 Sensors & 2 remotes R2 800.00

Colin 079 180 2853

www.stopthieves.co.za

Snake Catcher

Protect Family, Guests, Pets, Livestock



ONLY R 1595.00 & FREE Postage

Call or SMS Ralph: 0825730710

Or email: SnakeAlert@Global.co.za

HUSQVARNA 531RS BRUSHCUTTER

33.6 cc • 1.2 kW • 6.9 kg



R 5 599.00 INCL VAT

HUSQVARNA 541RS BRUSHCUTTER

41.5 cc • 1.6 kW • 7.3 kg



R 5 999.00 INCL VAT

HUSQVARNA TS138 LAWN TRACTORS

Husqvarna Series™ Intek Engine • 508 cc • 13.0 kW @ 3600 rpm • CVT • 97 cm cutting width • Stamped cutting deck



R 31 600.00 INCL VAT

HUSQVARNA 236 CHAINSAW

38.2 cc • 1.4 kW • 14" 3/8 / 050 • 4.7 kg

R 2 999.00 INCL VAT



HUSQVARNA R316T RIDER

Kawasaki FS series V-Twin Engine • 603 cc • 9.6 kW @ 2900 rpm • Hydrostatic • Delivered deckless • Suitable for 103 cm cutting deck



R 55 800.00 INCL VAT

HUSQVARNA 61 CHAINSAW

61.5 cc • 2.9 kW • 18" 3/8 / 058 • 6.1 kg

R 7 999.00 INCL VAT



FIND YOUR HUSQVARNA AT



HONEYDEW LAWNMOWERS



15 Picaroon St, Laser Park, Honeydew
011 794 2990 | www.honeydewlawnmowers.co.za



Husqvarna



HURRICANE PUMPS



Bring this
advert in
for a
10% discount
4" Pumps only
retail customers only

4SD2/8 0.37KW 220V
Borehole Pump
Motor and Control Box
2000ℓ/hour @ 40m

R2170
excl

4SD2/11 0.55KW 220V
Borehole Pump
Motor and Control Box
1800L/hour @ 68m

R2365
excl

4SD214 0.75KW 220V
Borehole Pump
Motor and Control Box
2000ℓ/hour @ 80m

R2565
excl

4SD2/20 1.1KW 220V
Borehole Pump
Motor and Control Box
1800ℓ/hour @ 120m

R3120
excl

6" Pumps & Motors Now Available

6" Pump Ends 9.2KW
to 22KW
From

R4000,00 excl. V.A.T

6" 380V Sub Motors
7.5KW to 15KW
From

R5200,00 excl. V.A.T



**Large models up to 2.2KW
in 220V and 7.5KW in
380V also available from stock**



Contact : Renate on 082 310 1541 or 010 597 7843

Email : sales@hurricanepumps.co.za

184 Boundary Road, Mnandi, Centurion

Co-ordinates : S25°53' 53.7" - E028°03' 45.2"

See www.hurricanepumps.co.za for our full range of products

Contact : Rae on 079 892 2782 or 015 297 2444

Email : rae@hurricanepumps.co.za

86 Oost Street, Polokwane, Limpopo



8 THIRD STREET , DELMAS

www.mnani.co.za
www.tuffy-agri.co.za



TEL 013 665 3054

TEL 013 665 2800

076 560 9856

gert@mnani.co.za

sales@mnani.co.za

workshop@mnani.co.za

accounts@mnani.co.za

TUFFY BALER



AVAILABLE IN 800X500
 800x700
 700x1000
 1000x1000

TUFFY SLASHERS



AVAILABLE IN 800mm, 1m,
 1,2m, 1,5m AND 1,8m

TUFFY TWINROTOR



AVAILABLE IN
 2,0m, 2,4m AND 3,0m

TUFFY GRASS SEEDER



AVAILABLE IN 2,4m AND 3m

TUFFY GRASS ROLLER



AVAILABLE IN 2,5m AND 3m

TUFFY COMBINATION GRASS SEEDER



AVAILABLE IN 2,4m



**ALL IMPLEMENT REPLACEMENT
PARTS - ANY MAKE OR MODEL**
 DISC BEARINGS, DISC SHAFTS,
 DISC SPACERS, RIPPER TINES,
 CULTIVATOR TINES, BOLTS & NUTS,
 PTO'S, UNIVERSALS, YOKES,
 SPROCKETS, CHAIN, IMPLEMENT
 PINS, TOP LINKS
MOWER SPARE PARTS
 BLADES, BOLTS, BUSHES.

COME VISIT OUR NEW WEBSITE
www.tuffy-agri.co.za

COURSES

Horticultural training on offer

Even though the end of the year is looming there are some horticultural courses coming up in the next few months that will be of interest to smallholders wanting to grow vegetables for profit.

□ The ARC-Plant Protection Research Institute at Roodeplaats outside Pretoria is offering training in Oyster Mushroom Production. The course runs 16–19 October and is aimed at entrepreneurs aspiring to become mushroom farmers to grow mushrooms for profit and to be able to manage successful mushroom businesses. The course content includes an introduction to basic mycology, spawn making,

substrate preparation, spawning and spawn run, fruiting, harvesting and handling, packaging, contract farming strategies and marketing your mushrooms.

Across the five days the training is both theoretical and practical. The course fee is R2500 pp. To book contact 012 427-9700/9740 or email trainingservices@arc.agric.za.

□ Two organic vegetable gardening courses are being offered at the Inner City Garden, Johannesburg, by Sought After Seedlings. The elementary training will take place on 16 September, while the advanced course will run on 11 November.

Content of the elementary

Continued on page 15



Oyster mushroom.



F SERIES PARTS

F100 & F250





CRAIGARY ENTERPRISES CC
 99 7th Ave, Edenvale
 T: 011 609 3631
 F: 011 609 3693
 E: craigary@global.co.za



Budgies 2 Bantams

WELCOMES YOU



Coops available

for large & small gardens

Keep your chickens & bunnies safe from predators... keep your garden safe from your pets



Cages include egg retrieval gate for **FRESH EGGS DAILY**

Muscovy Ducks &



Geese in Stock

Breeders of over 50 breeds of poultry

Mixed Fowl
Starter Mash
Whole Mielies
Growing Pellets
Laying Pellets
Growing Mash
Budgie Seed
Sweetfeed

Dog food available

We Hand-rear AFRICAN GREYS

Unique Farm Pet Shop

Aviaries, Cages, Pet accessories:
 Dog leashes, Shampoo, etc.
 Only 20 min drive from PTA CBD & Fourways on the M26 (Main Road/Erasmia)
 Open Sundays & Public Holidays
 By appointment only



info@budgies2bantams.co.za
www.budgies2bantams.co.za

Mohamed 082 379 1555

(Owner: complaints/queries)

Raees (sales/buyer)
079 692 0542
082 689 0287

We accept all major Credit or Debit cards




Proud sponsor of the
Southern African Show Poultry Organization

Specialists in Exotic Poultry



**ONS HET IETS VIR ELKE
BOER SE BEHOEFTE**

Landini **McCORMICK**

**WE STOCK A WIDE RANGE OF
TRACTORS AND IMPLEMENTS**

**BALERS
WRAPPERS **GALLIGNANI**
RAKES
DISC MOWERS
TEDDERS**

NEW **FALCON** SLASHERS
BALE HANDLING MACHINES

**A WIDE RANGE OF
BP IMPLEMENTS
AVAILABLE**

IN STOCK:

**BALE TWINE FOR
SQUARE BALERS
ROUND BALERS
BIGPACK BALERS
HIGH QUALITY NETTING
FOR ROUND BALERS
& WRAP PLASTIC
FOR WRAPPERS
AVAILABLE AT
GOOD PRICES
WIDE RANGE OF
PALLET NETTING
& HAND STRAPPING**

**ENGEN OLIE MET UITKLOP PRYSE
ENGEN OIL AT KNOCKOUT PRICES**



**20 litre
210 litre**

GPS: 26°04.157'S 27°40.845'E

TEL: 011 952 9926/7/8

FAX: 086 571 5578

marco@geniuslandini.co.za

admin@geniuslandini.co.za

Tuks' short courses in farming for 2019

Want to go to (or go back to) university? As a small-holder you might be inter-

ested in some of the agriculture and food security short courses offered by Enterprises on behalf of the University of

Pretoria. The courses range from two to five days of face-to-face lectures to six-month online courses.

The line-up for 2019 includes:

- ☐ Land rehabilitation: reclamation and restoration;
- ☐ Food security and nutrition;
- ☐ Seed science;
- ☐ Basic course in potato

HORTICULTURE

From page 13

course includes mastering your soil ~ 17 essential nutrients and how they work, tips for growing crops in a water restricted environment, composting, crop rotation, mulching, companion planting, how to plant and

germinate your seeds, planning your organic vegetable garden and learning how to make your own plant serum, to increase healthy plant growth and build immunity. Time: 8:30 – 4:30pm, light refreshments are provided, as well as notes and the price is R1 650 per person. The advanced course covers similar topics in greater depth, along with pest control and learning how to make your own fish emulsion fertiliser. Time: 08h30–16h30, light refreshments are provided, as well as notes and the price is R1 950 per person.

Contact 082 365 0050 or email sales@soughtafter-seedlings.co.za.

Continued on page 17

Clovelly



Day-old Broiler Chicks

Delmas
083 393 0935

Geel Mielies

Heel Mielies
50kg ~ R120

Gebreekte Mielies
50kg ~ R130

Kopmeel & Plantmeel
ook beskikbaar

Heather 083 313 6510
011 416 3306



WATER PLANT
turning your garden into a paradise
since 1982
Tel 0861 987 654 Cell 083 407 7589

We Courier Nationwide!

Prices include VAT, E&OE, while stocks last. Illustrations may differ from products supplied.

HUNTER IRRIGATION
15% OFF



1000L SLIMLINE TANK



R1999

BIG BLUE SYSTEM
3 STAGE FILTER



pp + cto + pp

R2999

Braais & Pit Fires



GERMICIDAL TREATMENT SYSTEM
Air and Water Sterilisation for Storage Tanks

NEW!

UV-C light

EFFECTIVE UP TO 5000 LITRE TANK



1m

R3699

14L MINERAL POT



R239

V180 DRAINAGE PUMPS



R1 299

50 WATT SOLAR PANEL AND SUBMERSIBLE PUMP



R1 399

e-mail albert@waterplant.co.za
Hartbeespoort: R512, near Pecanwood

SEE THE FULL RANGE ON OUR WEBSITE
www.waterplant.co.za



95 Ampthill Avenue, Benoni
011 422 6354 | 072 847 0978

Petrol & Diesel Generators



6,5kVA Diesel
from R13 500
*VAT included

2,8kVA Petrol
R3 499

NEW!! 6,5kVA Petrol
R8 500
*VAT included

Electric Start & AVR

LIMITED STOCK

Power Sprayer/Fire Fighter

Accessories Included:
1 x Hose Reel
1 x Spray Lance
1 x Swivel Fitting
20m High Pressure Hose
Suction & Return Hose

R4 490
*VAT included



Power Sprayer/Fire Fighter with 600 Litre Tank

Accessories Included:
1 x Hose Reel
1 x Spray Lance
1 x Swivel Fitting
20m High Pressure Hose
Suction & Return Hose
600 Litre Tank

R7 550
*VAT included



600 Litre Tank Alone R3 995 Phone for availability

Petrol & Diesel Engines

Petrol (horizontal shaft)

9HP R3 650
13HP R3 850
16HP R4 050
20HP R15 465
6.5HP *R2 280

*with reduction box
*VAT included



Diesel (horizontal shaft)

5HP R5 045
6HP R5 195
10HP R7 360
12HP R8 575

*VAT included

Lawnmower Engines



6.5HP R2 270
20HP R13 065
*VAT included

Limited Stock Available

Water Pumps - Petrol & Diesel



Inlet & Outlet
Hose available

Petrol

2" R2 500
3" R2 699
4" R5 380

Diesel

2" R5 410
3" R6 195
4" R7 360

*VAT included

Chemical & Trash Pump:

R3 995

*VAT included

High Pressure Pump:

R3 795

*VAT included

2", 3" & 4" Pedestal Pumps:



from R1 299
*VAT included

Pressure Washer

Diesel with electric start
3 600 psi



R14 950

*VAT included

Brushcutter

Top
Quality
43cc



R1 999

*VAT included

Blower



R1 500

*VAT included

Earth Auger

52cc,
including
200mm
drill bit



R2 999

*VAT included

Compactors

from R5 999

*VAT included



Tamper/Rammer



R16 499

*VAT included

Petrol & Diesel Cultivators

from R7 995
*VAT included

ALL PRICES VAT INCLUSIVE
FULL SPARES BACKUP & SUPPORT

Pictures for illustrative purposes only.
Actual products may differ. E&OE

Safe pesticide guidelines to protect bees, says Daff

In an effort to prevent harm to insect pollinators such as bees, the Dept of Agriculture, Forestry & Fisheries (Daff) has compiled and published a 16-page document entitled Guidelines on the Management of the Risk of Agricultural Remedies on Insect Pollinators.

The document lists a number of crop species that are subject to regular treatment by pesticides, and which are pollinated by bees, and gives handy guidelines to the farmer on how to best apply

pesticides without harming local or introduced bee colonies.

The document is available for download as a pdf file on our website, www.sasmallholder.co.za.

Meanwhile, in other regulatory news, the Daff has banned the importation of Zambian honey, following the

detection of American Foulbrood (AFB) in samples of honey from that country.

AFB is a serious bacterial disease capable of killing an infected bee colony.

There is no cure, and it contaminates beekeeping equipment, so once detected that must be destroyed to prevent the disease spread-

ing.

Zambia has a thriving beekeeping industry among small farmers, and exports honey worldwide.

Smallholders who are interested in keeping bees have access to assistance, advice and support from one of three beekeepers associa-

Continued on page 19

COURSES

From page 15

pathology;

- ☐ Programme in agricultural and rural finance;
- ☐ Secondary agriculture and value-chain financing;
- ☐ Agricultural entrepreneurial management;
- ☐ Starting my agri-business;
- ☐ Primary animal health care;
- ☐ Milk goat management;
- ☐ Introduction to artificial insemination in cattle;
- ☐ Online Course in phytomedicine
- ☐ Online course in food microbiology.

For information about dates and course fees contact info@enterprises.up.ac.za or go to www.enterprises-up.ac.za/trainingsolutions.

The Bee Box



Complete Beehives professionally made and dipped in hot waxol.

Brood box and super all with frames and aluminium lid

Midrand
082 791 3393 Porky Scriven
Tzaneen
082 604 5828 Jason Scriven



Bell & Paton

Portable walk-in greenhouse tunnel for the home gardener

Self-sufficient food propagation has never been easier

Easy to construct



Suitable for crops ranging from:

Lettuce, cabbage, spinach, basil, oregano, thyme, rocket sage, dill, pak choi, tah tsai, parsley.

Vine crops including: Tomato, cucumbers, marrow, chilli and egg plant

Root vegetables such as: Carrots, turnips, parsnips, potatoes and radishes thrive in the warm environment.

The heat retention of the PE greenhouse design allows summer crops to be grown later into the colder months. Summer crops can also be planted earlier to extend their growing season

Assembly takes less than 1 hour. Once erected it can easily be moved into the correct position as it weighs less than 30kg.

The PE plastic roof is UV treated to withstand the harshest sun



The entire greenhouse can be closed with dual, easy-use zips keeping the outside world separate from the cosy growing area

Multiple roll-up windows equipped with insect netting to help control pests.



Available in 4 sizes



- 6m long x 3m wide x 2m high = R6 800
- 4.5m long x 2m wide x 2m high = R3 600
- 3m long x 2m wide x 2m high = R3 200
- 10m long x 3m wide x 2m high = R10 500

Excluding VAT

Galvanised 25mm steel poles easily fit together.



Included: 25mm galvanised steel poles for endoskeleton

- UV treated, reinforced PE plastic roof to fit over poles
- Dual zip, roll up door (6m has front and back doors)
- Roll up side windows with insect net
- Full instructions and all tools required for construction

CONTACT

www.bellandpaton.com
bellandpaton@gmail.com
 Tel: Garth 083 320 2922
 Tel: Oliver 083 650 0711



Professional Pruning

**GREAT DEALS ON PROFESSIONAL
HIGH-QUALITY ITALIAN MACHINES**



MH198 RK

Tiller
Gearbox: 2 forward + 1 reverse



NOW
R8999
ex VAT
~~R10078~~

OM 741

Professional
16kw - 40cc
Brushcutter



NOW
R5499
ex VAT
~~R6158~~

PPX 271

Telescopic pruner
Reach up to 5m branches



NOW
R11240
ex VAT
~~R12588~~

HC 265 XP

Hedge trimmer
600mm blade
0.75kw - 217cc



NOW
R6499
ex VAT
~~R7278~~

GST 250

Pruning chainsaw
1kw - 25.4cc
only 27kg



NOW
R5999
ex VAT
~~R6718~~

GS 35C

2 hp - 15 kW
16" - 3/8 x 0.505"
4.6 kg



NOW
R2399
ex VAT
~~R2686~~

BV 300

Chrome cylinder
Low noise
4.5 kg



NOW
R3199
ex VAT
~~R3582~~

NOW
R1499
ex VAT
~~R2499~~



CHAINSAW

GL5200
52cc

NOW
R2100
ex VAT
~~R2999~~



EARTH AUGER

EAG4300
43cc
FREE 200mm bit included

NOW
R10499
ex VAT
~~R12999~~



SHREDDER

SS1002
6.5HP
76mm branch capacity



BRUSHCUTTER

BCCG430- B Style
Grass blade
Nylon head
Toolkit

Ts&Cs apply. While stock lasts. Actual product may vary from pictures.
E&EO permitted. Valid until 30 September 2018



Call 011 668 1923/4 to find your nearest dealer

BEEKEEPING



Northerns' field day: Members of the Northern Beekeepers Association recently enjoyed a field day among aloe plants north of Pretoria which included visiting and inspecting working hives, a series of informative talks and time for some socialising.

Left: Off they go ... attired in their bee-keepers' suits members pile into a bakkie for a trip to the aloes. Right: Members and visitors listen to the talks at the field day.



From page 17

tions in the province. All three associations welcome

Captain Beefheart
PETS FOOD
PURE FROZEN MINCE
CHICKEN & BEEF

Top quality pure frozen mince
BEEF OR CHICKEN
DELIVERED TO YOUR DOOR
Minimum Order for Home Deliveries: 1 case = 16kg
072 838-0552
ronaldc@polka.co.za

new beekeepers to their regular meetings and have active Facebook pages to keep members abreast of developments.

The Northern Beekeepers Association (known as "Northerns") meets as a rule around Pretoria and caters for beekeepers around Pretoria. For details call Riekie on 082 972-1889

The Southern Beekeepers

Association ("Southerns") covers beekeepers in the Johannesburg, West Rand and southern Gauteng. Email Lantz at info@beekeepers.co.za for details

The Eastern Highveld Beekeepers Association ("Easterns") caters for beekeepers on the East Rand, as well as members in Mpumalanga. Call Mike on 083 430-8707 for details.

BANG-A-LERT

NEW!! All-Steel version

Stop crime on your property
Affordable & Practical
More than 6 000 units sold in SA
Simple Installation
No Power Required
Dealer Prices for more than 10 units
Mason Engineering
083 611 2857
www.bangalert.co.za

Steyns **Super DEALS**

R165⁰⁰
25 kg Striped Sunflower

R333⁰⁰
40 kg Enerdog

R55⁰⁰
10 kg Uthando Super m/meal

R249⁰⁰
40 kg Epol Rider Meusli

R 69⁰⁰
18-22 kg A Grade Tef

R 79⁰⁰
18-22 kg A Grade Lusern

R389⁰⁰
25 kg Montego Adult

R175⁰⁰
40 kg Epol All in one

R202⁰⁰
40 kg Super Rider Meal

R175⁰⁰
50 kg Mixed Fowl

R155⁰⁰
50 kg Sifted Crushed Maize

Delivery available - SQ - Prices include VAT where applicable - valid while stocks last - E&OE

Krugersdorp (Mill)
4 Rustenburg Road
Krugersdorp West
011 953 1828 - Lettie

Randfontein (HQ)
29 Union street
Randgate
011 412 3246 - Willie

Carletonville
4 Beerster road
Oberholzer
082 7397427 - Kobus

FOOD SECURITY

A food crop that beats climate change

Pearl millet (*Pennisetum glaucum*) is a crop that is attracting attention because of its perceived advantages in coping with climate change ~ most notably its drought tolerance ~ although it is thousands of years old. Pearl millet originated in central tropical Africa and the plant was domesticated as a food crop some 4 000 to 5 000 years ago.

Traditionally millet is used mainly as whole, cracked or ground flour, dough or a grain-like rice. These are made into fermented breads, foods and thick porridges, steam cooked dishes, non-alcoholic beverages and snacks. Pearl millet is also grown for silage and hay production. Whole seeds of millet can be successfully incorporated into broiler diets without compromising bird

performance. The grain can be added to bird-seed mixtures. Crop residue and green plants provide building materials for fencing, thatching and making basketry. Millet is also used as an ornamental plant. To use it as grazing, it is recommended that you allow grazing down to between 400 – 600 mm in height, and not shorter than 150 mm, as this

allows for quick rejuvenation. The advantages of millet include:

- ☐ A well developed root system;
- ☐ It uses soil moisture effectively;
- ☐ It has good drought tolerance, recovering quickly once rains commence;
- ☐ It controls witchweed (rooibloom);
- ☐ There is no danger of bloat;
- ☐ It is suitable for horses;
- ☐ It provides excellent grazing;
- ☐ It can produce up to 20 tons of silage/ha, (add 2% molasses).

The seed contains 5 to 7% oil, and has higher protein and energy levels than maize and sorghum. It contains more essential amino acids than wheat, oats, rice, barley, and rye.

Pearl millet is an erect annual plant, up to 3m tall, and may tiller profusely under favourable weather conditions.

The stems are 1-3cm broad and pithy, while the leaves are long, slender and smooth or hairy, up to 1,5m long and 8cm broad. The leaves may vary in colour from light yellowish green to deep purple.

Pearl millet usually flowers from 40 to 55 days. The flowering structure (inflorescence) in pearl millet is called a panicle or head and it is 12 to 30cm long. The mature panicle is brownish in colour. The seed begins developing after fertilisation and matures 25 to 30 days later. The seeds are nearly white, yellow, brown and grey in colour and weigh about 8mg on average. The grains are an essential part in pearl millet while the entire crop is used as fodder. The optimum temperature for growth ranges between 23 and 30°C. It is generally

Continued on page 21



Manufacturers of Water, Chemical, Transport, Septic Tanks and Silos

Cape Sales:
Tel: +27 (0)22 433 2342/2937
Fax: +27 (0)22 433 4724
E-mail: rotocape@mweb.co.za

Gauteng Sales:
Tel: +27 (0)12 376 1070/2
Cell: +27 (0)71 689 4216
Fax: +27 (0)86 297 2504
E-mail: roto@mweb.co.za
PO Box 1210, Ifafi 0260

KZN Sales:
Tel: +27 (0)39 685 7243
Fax: +27 (0)39 685 0292
E-mail: kznsales@rototank.co.za

www.rototank.co.za **086 000 TANK (8265)**







Vertical tanks from 500€ to 40 000€

Horizontal tanks from 500€ to 8 000€

Silos Biggest Sizes 27kl

Modular plastic silos ranging from 8m³ to 27m³

Plastic septic tanks ranging from 600€ to 12 500€ (2-55 persons)

Free delivery

BUILT TO LAST!

WARRANTY




FOOD SECURITY



Fine heads of pearl millet.

From page 20

sensitive to low temperatures at the seedling stage and at flowering.

Pearl millet is mostly grown where the annual rainfall ranges from 250 to 700 mm, so Gauteng smallholders should consider growing it. Despite its drought tolerance, it requires even distributed rainfall during the growing season. Too much rain at flowering can cause a crop failure.

Like most plants, pearl millet also does best in light, well-drained loams, but it can be

grown on a wide variety of soil types. It performs well in soils with a high salinity or low pH of 4 to 5. It performs poorly in clay soils and cannot tolerate waterlogging. Pearl millet is an annual summer crop and the optimum planting time ranges from early October to November. Prepare warmer seedbeds on well-drained soils, to which has been added nitrogen-rich fertilizer or organic matter such as kraal manure. Seed should be planted into a firm, mellow,

Continued on page 23



Pearl millet seed.

Bekostigbare implemente geskik vir die klein boer

<p>SKRAPER</p> <p>Lem is VERSTELBAAR</p> <p>R2 200</p> <ul style="list-style-type: none"> • 1.2m wyd • 1.5m wyd • Geskik vir klein trekkers 	<p>BOSSIEKAPPER</p> <p>Kante is VERSTELBAAR</p> <p>R6 500</p> <ul style="list-style-type: none"> • 1.2m wyd • Sonder PTO • 1.5m ook beskikbaar
---	--

Pryse sluit BTW in 072 153 8776

WATER IS OUR BUSINESS

We carry the widest range of pumps and fittings for all your requirements

- Borehole Testing & Certificates
- Dewatering of Dams & Pools
- Installations of Borehole pumps & Garden Irrigation

(Phone for Quotation)

- We now stock **Solar Pumps, VSD Drives, Water Tanks and Water Harvesting**

Borehole testing up to 100 000l per hour. Borehole inspections can be done with latest camera technology.

In-Store specials on pumps, fittings and filters

New Tanks now in stock!

Call us now for a quote on your GARDEN IRRIGATION

We also Repair!!



011 660 7824

TECHNOLOGIES

manti

mark@amantitech.co.za

www.amanti.co.za

67 Commissioner street, Krugersdorp (opposite Action Ford)

GPS 26°06'07"S, 27°46'20"E

Consultations on ALL your water problems

Quality Agricultural Equipment & Spares

-POMA-SPRAYER



500 litre skid-mounted
motorised sprayer.
2 x 20m hoses

-POMA-MOWER



SPRAYERS
for firefighting
herbicides, cleaning, etc

Slasher Spares
for ALL makes & models

**Blades,
Skids
& Bolts**



MATABI
GOZPER



17.5 litre
Firefighting
Backpack
Sprayer



**PTOs,
Components
& Spares**



GRASS HOPPER
IT'S SO MUCH MOWER

**FULL RANGE OF
GROUND-ENGAGING
IMPLEMENTS
FROM
TOP BRANDS**

MONOSEM

JUPIDEX

Rovic Leers
Leading Farming Technology

SOUTHTRADE
IMPORTERS & DISTRIBUTORS OF AGRICULTURAL MACHINES

tandem
LAWN INDUSTRIES

Landini **McCORMICK**

Also stocking these fine brands

ENGEN
Lubricants

tandem
LAWN INDUSTRIES
Supaturf



STIGA
Lawn Tractor

Swedish quality
14kW Briggs &
Stratton engine
106cm cut



Landini Solis 20,
13kW 4-WD Tractor

MAJOR
WWW.MAJOR-EQUIPMENT.COM

Major Swift 1,9m & 2,4m
Roller Mowers



Landini Solis 50,
35kW 2-WD
Tractor



Sigma 4 Front End Loaders
for Landini & McCormick tractors*

* Other makes available to fit ALL tractors

WORKSHOP NOW OPEN

We REPAIR:
Tractors
Implements, Mowers,
Chainsaws, Brushcutters
etc, etc

**1 West Street
Boksburg East
Tel: 011 914-1922
Fax: 011 914-1923**

TOUGH AS NAILS AGRICULTURAL EQUIPMENT



**REAPERS
AGRI**

MADE FOR THE TOUGH AFRICAN BUSH

www.reapersagri.co.za

Pieter Visagie (snr)
082 616-8060
pieter@reapersagri.co.za
Pieter Visagie (jnr)
076 423-9860
sales@reapersagri.co.za

From page 21

moist seedbed. As pearl millet seed is small, shallow planting is recommended to obtain good seed-to-soil contact. Plant densities should be 100 000 to 175 000 plants per ha.

Good weed control is necessary for successful pearl millet production and it is particularly important to control early emerging weeds. Preventive control options

begin with planting clean, weed-free seed. In addition, producers should make sure that all equipment used to plant millet is free of weed seeds. Controlling weeds along ditch banks, roadsides, and field margins will also help prevent weed seed from entering the fields.

Grain pearl millet is not difficult to grow as it hosts few insect pests. The principal insect problems in millet

production are chinch bug and stinkbug. Normally insecticides are not needed on pearl millet.

Birds love eating pearl millet seed off the plants in the field. Losses can be severe in small fields or when harvest is delayed. Early planting and timely harvesting are essential to minimise bird damage.

The most important diseases include mildew, seed rot, rust and grain moulds. Growers should properly identify the diseases that limit production and then use a variety of controls.

Rotation with unrelated crops is probably the most utilised cultural practice for disease control. This helps keep populations of pathogens from building up to damaging numbers. One should not expect rotation to eliminate

disease development, but it certainly aids in reducing damage from most diseases. Deep burial of crop residue helps to control certain diseases by placing the organism contained in the residue at a depth where there is an oxygen deficiency. This reduces the population

Continued on page 27

Quality Irrigation Pipe @ BEST PRICES!!
Buy direct from our Factory

- ★ LDPE 12-50mm dia, Class 3 & 6
- ★ HDPE 12-90mm dia, Class 6 to 20
- ★ We do custom jobs to client's requirements
- ★ Made from recycled material ... environmentally-friendly
- ★ Dealers sought throughout Gauteng

*Leaky pipe?? Or offcuts??
 We buy scrap polyethylene pipe
 Best prices paid!!
 Clean up your farm ...
 Recycle the waste!!*



DeltaPlast (Pty) Ltd
 LDPE and HDPE irrigation pipe manufacturers

Tel 016 455-3947
 3 Joubert St Ext
 Duncanville,
 Vereeniging

Find us on
Facebook
 facebook.com/gautengsmallholder

Clovelly



- Day-old commercial Rhode Island Reds
- Layers for free-range & cages
- Sexed 1st grade brown pullets @ R17ea
- Day-old white cockerels @ R2-50ea

Delmas
 083 393 0935

STEWARTS & LLOYDS PALISADE

The Largest Manufacturer of Steel Palisade Fencing in the Southern Hemisphere

Cold formed palisade panels
 40 x 40 section
 16 palings per panel

3 000mm wide x 1 800mm high **R730.00**
 3 000mm wide x 2 000mm high **R780.00**

Cold formed palisade palings

40mm x 40mm	30mm x 30mm
1 500mm R28.62	1 500mm R21.03
1 800mm R34.97	1 800mm R24.71
2 000mm R38.30	2 000mm R27.46

3 or 7 spike available

HR 25mm ANGLE DEVIL'S FORK front weld PANELS

3 000mm wide x 1 800mm high **R579.00**
 3 000mm wide x 2 000mm high **R650.00**

76mm Square Posts

2 400mm DOMED CAP **R169.00**
 2 400mm PYRAMID CAP **R192.00**
 3 000mm DOMED CAP **R239.00**
 3 000mm PYRAMID CAP **R263.00**

Cold formed palisade panels
 30 x 30 section
 19 palings per panel

3 000mm wide x 1 800mm high **R672.00**
 3 000mm wide x 2 000mm high **R772.00**

16 palings per panel
 3 000mm wide x 1 800mm high **R570.00**
 3 000mm wide x 2 000mm high **R640.00**

Palings and panels manufactured from 500mm to 3 000mm height

Robertville 011 474 5335
Springs 011 811 5111
Vanderbijlpark 016 981 2038
Vereeniging 016 421 3260
Wadeville 011 824 1800
Wynberg 011 321 7900

Alrode 011 900 4270
Boksburg 011 917 7963
Booyens 011 496 3000
Brits 012 252 0256
eMalahleni 013 692 8425
Pretoria 012 800 9600

Only A-Grade Material Used
We Manufacture Various Lengths
Free Delivery • All Prices include VAT • E&OE

MS 250

Petrol Chainsaw
45,4 cc • 2,3 kW



FS 160

Petrol Brushcutter
29,8 cc • 1,4 kW



MS 310

Petrol Chainsaw
59 cc • 3,2 kW



FS 250

Petrol Brushcutter
40,2 cc • 1,6 kW



BR 700

Backpack Blower
64,8 cc • Max 1860 m³/h • Max 88 m/s



SR 420

Mist Blower
56,5 cc • 13 ℓ
Max 1260 m³/h • Max 101 m/s



FOR ADVICE ON THE CORRECT PRODUCT FOR THE JOB CONSULT YOUR STIHL DEALER

ALBERTON: Lawnmower Clinic 011 907 8484 • **BENONI:** Master Mowers 011 395 2648 • **Bwana Tool & Plant Hire** 010 591 2858 • **BRITS:** Enviro Chainsaws Brits 012 252 2479 • **BRONKHORSTSPRUIT:** Bronkhorstspuit Fietswinkel 013 932 0531 • **BRYANSTON:** Lawnpower 011 705 3556 • **CENTURION:** Enviro Chainsaws Centurion 012 653 2479 • **DELMAS:** Deltool 013 665 3192 • **HEIDELBERG:** Masakhane Industries 016 349 6927 • **JOHANNESBURG:** Green's Industrial 011 614 0295 • **JOHANNESBURG SOUTH:** Glen Mowers 011 436 2220 • **KEMPTON PARK:** Precision Mowers 011 391 0708 • **KRUGERSDORP:** GP Lawnmowers 011 955 3610 • **LYNNWOOD:** Mowtown Lawnmowers 012 348 6427



RE 143

High Pressure Cleaner
140 bar • 2,9 kW



BT 131

Earth Auger
36,3 cc • 1,4 kW



SE 62

Dry Vacuum Cleaner
1,4 kW • 210 mbar • 20 ℓ



HT 102

Pole Pruner
31,4 cc • 1,05 kW



FUNCTION Universal

Gloves
with Knuckle Protection



MEGACUT 33CM

Pruning Saw
Ø up to 8 cm • 3-Sided Japanese Blade



TEL: 011 822-8503
011 964 1323
FAX: 086 630-2616
sales@gas2u.co.za
www.gas2u.co.za



S26°0.180 E28°24.807

14 Magic Avenue
Bapsfontein
(near BP Garage)

Gas Geysers



6 Litre	R1364.50
8 Litre	R1601.50
10 Litre	R1838.50
12 Litre	R2372.50
16 Litre	R2728.50
20 Litre	R3557.50
20 Litre with turbine Flue	R8500.00
Flue	R145.00



Lasher
Spade No. 2
660mm
Limited stock

Was R218
Now R129.95



LPG Regulator
with Volume Gauge

Now R130
1kg/h 2.8kPa

Lifetime
Warrantee

40w LED
Solar Spotlight



Now R786.50

LED Tube
Light 18w
2 metres
Clear/frosted



Now R270

220g Gas
Cartridge



Now R33.50

Totai Portable
Cartridge Stove



Was R400
Now R250

**GAS REFILL
SPECIALS**

Collection Only



3kg -	R50.00
4.5kg -	R75.00
5kg -	R83.50
7kg -	R116.50
9kg -	R150.00
19kg -	R317.00
48kg -	R800.00



9kg
Megamaster
Cylinder

Now R450



Every day is pensioners day
Less 10% (Gas Only)



MIRKA Bull Dog Abrasives Air Products Pro-Max Consumables Atlas Geysers INTA Safety Fire Fighting Equipment

WWW.  STUMBELBLOC.COM

Make your own blocks and build for as little as R140,00/m²



Contact us NOW
for more info:
Andre 083 228 8036
andre@stumbelbloc.com

Have you seen the WEBSITE?

Plan a perfect summer veg garden

Ahh! The expectation of the upcoming summer! What bliss!! But here's the question: How much veg should you plant to ensure you have enough and not too much, and when should you plant it? Here are some simple tips and observations to help you get the most out of your vegetable patch, however large or small it may be. And this assumes you are on a

smallholding with reasonable space available for growing, ie not in a townhouse or with a cramped suburban garden. Furthermore, it assumes you are growing only for your family and, possibly, staff, and not for sale. The key to a successful veg garden is careful planning, which should include:

- ☐ The likes and dislikes of the family. It is absolutely pointless to grow something that nobody enjoys eating, however healthy and nutritious it may be on paper.
- ☐ The nature of growth of the species, ie is it a one-picking type such as a carrot or a cabbage, or is it a multi-picking type such as a tomato

plant or pepper?
☐ The size of the plant, both in its area requirements and its height. You can cram quite a few radishes, for example, into the space that is required by a cabbage.
 By the same token, if you plant different species in one bed it is unproductive to plant tall species such as

Continued on page 29

PEARL MILLET

From page 23

of the disease-causing organism and permits the crop to escape much of the damage.

Grain can be harvested as early as 40 days after flowering. When the crop is ripe and dry, grains will pop out cleanly when the head is pinched. Pearl millet can be harvested by hand, using a knife or sickle. The heads are then dried in heaps on the

ground or threshing floor.

The grain must be dislodged and be separated from spikelet and other debris.

Packing is normally done in bags, which must be tightly closed.

The Arc-Grain Crops Institute offers courses on basic knowledge and skills on the production and disease management of sorghum and millet.

Maize Feed & Seed
x Dog Food **AVI-PLUS**
HI PERFORMANCE FEEDS AGENT
 25 Limpopo St
 Three Rivers, Vereeniging
016 423 5767
 Dog food • Montego • Supreme
 Bow Wow • Cat food • Poultry feed
 Bird seed • Pet accessories
 Reptile accessories

Dikgogo Fela
Chicken Abattoir
 We slaughter for the Smallholder
 Certified Halaal
LIVE & SLAUGHTERED
Chicken Products for sale.
Open to the PUBLIC!
Randfontein
 S 26°12.310' E 027°36.156'
072 3785 311

		
BRUSH CUTTER STIHL FS85 25.4cc	BLOWER STIHL BG50 27.2cc	35cm BAR CHAINSAW STIHL MS250 45.4cc
R3785.00 Excl VAT	R1999.00 Excl VAT	R3855.00 Excl VAT
STIHL	STIHL	STIHL

GREEN'S INDUSTRIAL SUPPLIES

Sales, service and repairs.

Authorised **STIHL** dealer.

Tel: 011 614 0295/6
www.greensindustrial.co.za

Borehole Water Solutions
 Call 084 538 4600

Quality Service throughout Gauteng

Borehole Testing

SABS standards

Water Quality Tests

Borehole Pump Installations

Storage Tanks

Pressure Pumps

Irrigation

Electrical Installations

ALSO:

Mechanical Security Installations

www.bws-sa.co.za
kevin@rainsford.co.za

Afriq water

Get READY for Summer!

Your
ONE STOP
Complete
Irrigation Solution



SANDY SOIL

Sandy soil will crumble and fall apart when released. Water will tend to go straight down in this type of soil. Use closely spaced drippers 20-30cm apart.

LOAMY SOIL

Loam soil will hold together but then easily break apart. Water will move slowly and will spread evenly. Use drippers with 30-45cm spacing.

CLAY SOIL

Soil containing clay will hold together without breaking and water will be absorbed very slowly. Use drippers with a 45-60cm spacing.

Pressure compensated dripline:

On sloping terrains it is better to use pressure compensated dripline to ensure equal application. Never over pressurize pressure compensated dripper line to protect the diaphragm. Anti-siphon mechanisms prevents clogging caused by soil suction to drippers at the end of the irrigation cycle, therefore pressure compensated drippers is ideal for sub-surface application.

Some guidelines when determining the right dripline for your application

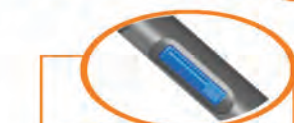
Contact us for more advise on irrigation

sales@afriqwater.co.za

082 454 7880 | 061 502 2547

www.afriqwater.co.za

Summer Specials on Dripline Irrigation



FLAT
R 1995.00
2500m roll
16mm Dripline
0.15mm wall thickness
20cm spacing

R 1950.00
2500m roll
16mm Dripline
0.15mm wall thickness
30cm spacing

R 1900.00
2500m roll
16mm Dripline
0.15mm wall thickness
60cm spacing

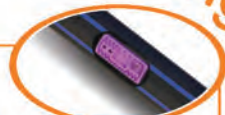
R 1995.00
2000m roll
16mm Dripline
0.2mm wall thickness
30cm spacing

R 1500.00
600m roll
16mm Dripline
0.6mm wall thickness
60cm spacing



ROUND
R 1350.00
400m roll
16mm Dripline
1.2mm wall thickness
30cm spacing

R 1350.00
400m roll
16mm Dripline
1.0mm wall thickness
60cm spacing



OVAL
R 1325.00
500m roll
16mm Dripline
0.9mm wall thickness
30cm spacing

R 1250.00
500m roll
16mm Dripline
0.9mm wall thickness
60cm spacing



R1.50

R1.25

R1.75

Sealing Rubbers



R3.20
for 300mm

R2.60
for 225mm

R2.30
for 150mm

Pegs



R1.15
**KATIF
DRIPPER**
2.3/3.75/8.4
L/HR



R1.00
**ON LINE
DRIPPER WITH
ADJUSTABLE
FLOW 0-70L**



R7.50

R7.90

R7.50

Mini Valves



R2.10

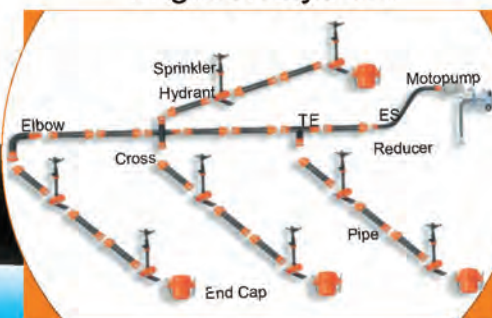
R0.95

R1.30

End Plugs

Versatile Quick Coupling

HDPE
Irrigation System



On Promotion
Now for Only
R52 900



On Promotion
Now for Only
R59 900

IN THE GARDEN



Only plant species that the family enjoys

From page 27

tomatoes or runner beans in front, and small stuff behind, because you won't be able to reach the rearmost stuff to harvest it. And, depending on

the way your beds face, the taller stuff may block out the sun from the smaller stuff behind.

□ The frequency with which you will harvest it, and the use to which it will be put. For example, one head of cabbage will last

in the kitchen for probably two or three meals, whereas to add radishes to your salads will require one or two plant to be plucked per person per meal.

Generally, you will be doing the cook in the family a favour by planting species that are used frequently, and herbs, close to the kitchen.

□ The ability to dry, freeze, pickle or otherwise preserve the harvest. Some species are easy and delicious to preserve, others not so much. You can cut down on the

drudgery of preserving by picking a few extra fruits every few days for preserving, rather than doing a mass preserving marathon of many hours at the end of the season.

□ The length of time the plant needs to grow to produce a usable harvest. Radishes, for example, need only a few weeks to grow to maturity, and then quickly become too big to be tasty. Onions, garlic and leeks take

some months to mature, and can last a season if properly treated.

□ The best time of year to plant. While it is true that most veg grows best in the warmer, wetter summer months, some species prefer colder weather, for example onions and garlic, and cauliflower.

□ Companion planting and soil requirements. If you

Continued on page 31

HIGHVELD HONEY FARMS

PROTECT OUR BEES
 Visit our farm in Rynfield to get your honey at farm prices. Bring your own containers and we will fill them up - pay ONLY for the HONEY
 Plot 185 Uys St, Rynfield AH, Benoni
 Tel 011 849-1990
 Weekdays 07:00-17:00
 Saturdays: 07:00-13:00

AMBERLINK HENS

 ★ 6 week old Pullets
 (All vaccinations done to 6 weeks, including MS Vaxsafe)
 ★ 17 week old Point of Lay Hens
 (All vaccinations done)
 AVAILABLE MONTHLY **FARM FRESH EGGS**
016 371-2154
082 903-6595


SPARTS MOTOR SPARES

Tel: 011 967 1295

Tel: 011 967 2151

Cell: 072 041 7819

Fax: 011 963 0473

Fax: 086 218 4686

email: spartscc@mweb.co.za



261 & 262 Stanley Road, Pomona, Kempton Park, CNR of Stanley and High Road
 Monday – Friday 07:30 – 17:00, Saturday 08:00 – 13:00, Certain Public Holidays 08:00 – 12:30



Section 6, Maranatha Business Park,
Middle Muir Avenue, Anderbolt Ext 111,
Boksburg



<https://www.facebook.com/Maxishare-cc-1054175121356419>

OPEN MONDAY TO THURSDAY 07:00 - 17:00 • FRIDAY 07:00 - 15:15 • SATURDAY 08:00 - 11:00

Our Products

- Weldmesh (Rolls & Sheets)
- Hinged-Joint Field-Fencing & Galvanised Flat Sheets
- Diamond Mesh & Woven Mesh
- Hexagonal Netting Wire & Insect Screening
- J Clips & Pliers; Hog Rings & Staplers; Bowls & Feeders
- Fence Posts, Stays & Farm Gates, Binding Wire & Fencing Wire

Directions to Maxishare from the Atlas Road off-ramp from the N12.

Head south on Atlas Road/M43. Turn right into Paul Smit Road. Turn Left into Turf Road. Turn Right into Middle Muir Avenue. Maranatha Business Park is at the end of Middle Muir Avenue.

GPS 26°12.435'S, 028°16.107'E

Disclaimer: Galvanising contains zinc. Customers use galvanised products for livestock and humans entirely at their own risk.

IN THE GARDEN

From page 29

plant different species together in one bed you should be aware that some species don't like to be close to each other. And while vegetables generally prefer a good quality, loamy soil with plenty of well-matured organic matter incorporated, some species, such as carrots, prefer a lighter, sandy soil and will not perform optimally in heavy soil or in soil which incorporates too much nutrient. The acidity (pH) of the soil is also important, as is the need to be careful about what was last planted in the bed. Thus, if you had an acid-loving plant growing well in a bed last season you may well find that a plant that likes a more alkaline soil will not thrive unless you take serious remedial steps to alter the pH.

Potatoes, too, are prone to fungal disease if successive crops are grown in the same patch.

□ Succession planting. It is helpful in the kitchen for some quick-maturing species, especially those that are used frequently such as carrots, or radish, to be available at the perfect point of ripeness over a long period. This means planting small batches every few weeks, rather than one massive planting at once. But here's a thing: How much time can you, realistically, devote to your veg patch over the next few months?

Christmas is coming up, and

the New Year, as well as kids' school functions, office parties and family functions. It's a busy time of year, and if your social life isn't enough there's also other stuff to do around the garden, such as mowing, fixing leaky roofs in the rainy season, attending to broken water pipes etc, etc. It is worth trying to be a bit reasonable here and limiting the number of succession plantings you will do to, say, two or three over the season. In other words, don't overdo it and be disappointed that you ran out of time and were disappointed by the result. With all of these factors in mind now is the time to sit down with a piece of paper.

Draw a schematic map of the space available to you, showing the beds and differentiating their soil types if necessary, any shady spots etc. Make a few copies of this. Next, with the family chipping in, list the veg they like on a separate sheet.

Now, using a pencil, and with an eraser to hand, map out the space allocation for each in the beds on your schematic map, bearing in mind the points above.

Now you're in a position to buy seeds and seedlings, assuming you haven't saved seeds from last season.

Generally-speaking, most seed merchants sell far more than one will use in one go in

even their small packets, so if planting from seed, don't be tempted to over-sow ~ the excess will just end up going to waste. Rather sow what you've allocated and store the seed in a cool dry place for use later in the season, or even next year.

For species that don't require

Continued on page 33

Clovelly
White Muscovy Ducks
Breeding Pairs AVAILABLE
Duck eggs wanted
Delmas
083 393 0935

B HOUSE HARDWARE
Mini & maxi loads of Building Materials

C/o Garsfontein Rd & Blesbok St, Mooikloof Pretoria East

Tel: 012 480 0088
012 480 0824/5
Cell: 082 558 9722

Email: sales@b-house.co.za

Mon - Fri: 07:00 - 17:00
Saturday: 07:00 - 13:00

Kom spandeer 'n dag saam met ons by die eerste Jaarlikse

GRASFEEES!

8 September 2018
Rafters Grasperke | 08H00 - 13H00

Trots in samewerking met
LA-Sport, Rafters, Presto Print,
Limpopo Readymix, Helping Hands,
Home-Link, Barber@Rafters, Huurman

Demo's deur Eureka, Matus, Tork Craft en vele meer.

Uitstallers welkom. Kontak ons vir meer besonderhede.
Andries 082 558 9722 | Chris 078 942 5424

AIR RIFLE MEGA STORE **PCP IS OUR GAME!**

www.armsshop.co.za
Edward 076 133 1940

Full Range H&N Pellets Available

JPX Pepper Gun

Wide Variety of Targets in Store

Specials on knives
GANZO

NOW AVAILABLE
Filling of air cylinders up to 300 bar

81 Pomona Road, Pomona
S 26 5.181, E 28 16.785

Mon - Fri 9am - 5pm
Sat - Sun & Public Holidays 9am - 1pm

TEL: 012 653 8342/8 or 083 269 0389

Email: dennismow@mweb.co.za

Elize: 078 014 8943

Stefan: 060 337 4406

Christopher: 076 821 0857

Unit 9 Miracle Park, Lenchen Ave

Ext off Old JHB Road CENTURION

GPS: 25°52.753'S, 28°9.635'E

EAST RAND: 011 730 3400



SERVING THE PUBLIC FOR 22 YEARS

30 Sept
While
stock
lasts

WINTER = BLOWER & SWEEPER TIME!

Hand held Blowers

25.4 cc

WAS: R2,100
NOW: **R1,500**
Excl. VAT

Optional Extra Vacuum Bag: **R300**
Excl. VAT

Backpack Blowers

51.7 cc WAS: R3,500

NOW: **R2,500**

63.3 cc WAS: R4,500

NOW: **R3,200**

82.4 cc WAS: R5,200

NOW: **R3,700**

All prices Excl. VAT

Floor Sweeper

800 mm

Operation width

WAS: R3,700

NOW: **R2,600**
Excl. VAT

2 Rotary Brushes

Cub Cadet Garden Tiller

Tilling Width: 18"
Depth: 7.5"
3.9 kW / 208 cc
WAS: R31,000
NOW: **R21,500**
Excl. VAT

MTD Field/Sickle Mower

4 Bar guides,
10 - 30 mm Skid Plates.
Cutting Width: 87 cm
1.7 kW / 3100 rpm
B&S OHV 450 E eng.
WAS: R21,000
NOW: **R14,500**
Excl. VAT

MTD Reel Mower

For small gardens.
WAS: R1,800
NOW: **R1,275**
Excl. VAT

POWER PRO Chainsaws

50.8 cc WAS: R3,006
NOW: **R2,100**
Excl. VAT
72.2 cc WAS: R4,300
NOW: **R2,950**
Excl. VAT

Wood Chipper / Shredder

183 cc
3.75 kW
5 hp,
Power Pro
R183
4-stroke
Engine
WAS: R13,000
NOW: **R9,000**
Excl. VAT
Suitable to chip:
Maize, Wood, Leaves, etc

Cub Cadet Ride-on Lawn Tractor with Rear Grassbox

HYDROSTATIC
36" 7.8 kW
420 cc
WAS: R42,000
NOW: **R29,500**
Excl. VAT

Mist Blower

40 cc,
2.13 kW
26 Liter,
Chemical
Tank
Ideal for
Spraying
against
pests in
Green-
houses,
tunnels, etc.
WAS: R3,800
NOW: **R2,700**
Excl. VAT

63.3 cc Earth Auger

Twin handle
Operation
with Auger
Bit included
100 mm Auger: **R3,000**
150 mm Auger: **R3,200**
200 mm Auger: **R3,300**
250 mm Auger: **R3,350**
Prices Excl. VAT
Save Time & Money

2-Stroke Vert. Engines

122 cc
2.7 kw,
3.6 hp
WAS: R2,500
NOW: **R1,550**
Excl. VAT

MTD 38" Ride-on Lawn Tractor

TRANSMATIC
6.2 kW,
344 cc
WAS: R40,000
NOW: **R27,500**
Excl. VAT

Nylon Line

2 Kg, Any size
12 Rolls
per box
delivery
Gauteng
Add: **R150**
WAS: R407
NOW: **R205**
Excl. VAT
Per Roll

POWER PRO Brush Cutters (Straight shaft)

CODE	cc	Was: Excl. VAT	Now: Excl. VAT
PRO36	32.7	R2,150	R1,500
PRO46	42.7	R2,400	R1,650
PRO55	51.7	R2,700	R1,850
TL52	51.7	R2,800	R1,600

R30 Excl. VAT
R33 Excl. VAT
R35 Excl. VAT
HARNESS INCLUDED

4-Stroke Vert. Engines

118 cc
3.3 kw,
4.3 hp
WAS: R2,000
NOW: **R1,300**
Excl. VAT

MTD 38" Ride-on Lawn Tractor

TRANSMATIC
7.8 kW,
420 cc
WAS: R42,000
NOW: **R29,500**
Excl. VAT

25.4 cc Portable Drill

0.8 kW / 1.7 hp
/ 7500 rpm
WAS: R3,500
NOW: **R2,450**
Excl. VAT

Push Brush Cutter

42.7 cc,
1.35 kW
WAS: R3,400
NOW: **R2,400**
Excl. VAT
Opt. Extra: 3rd Wheel

4-Stroke Vert. Engines

173 cc
4.5 kw,
6 hp
WAS: R2,900
NOW: **R1,900**
Excl. VAT

Industrial Heavy Duty Mower

TUFFKING
POWER PRO
15 hp 440 cc
Engine
WAS: R22,000
NOW: **R15,500**
Excl. VAT
Trailing Seat
Opt. Extra

22.5 cc Hedge Trimmers

600 mm Cutting width
WAS: R2,750
NOW: **R1,950**
Excl. VAT

Multi Tool

32.6 cc
Power Unit with all 4 incl.
1). Nylon Head,
2). Pole Pruner,
3). Hedge Trimmer
4). Lawn Edger
WAS: R6,000
NOW: **R4,300**
Excl. VAT

4-Stroke Horz. Engines

212 cc
5.25 kw,
7 hp
WAS: R2,000
NOW: **R1,300**
Excl. VAT

Vibrating Needle / Poker

37.7 cc, 1 kW/6500 rpm, 4-Stroke
WAS: R3,000
NOW: **R2,100**
Excl. VAT

27.2 cc Pole Pruner

Overall Length:
3 - 4.3 m
WAS: R6,000
NOW: **R4,300**
Excl. VAT

163 cc Water Pumps

2" WAS: R3,000
NOW: **R2,100**
Excl. VAT
3" WAS: R3,200
NOW: **R2,200**
Excl. VAT
Strong Frame

PRICES PER UNIT, EXCL. DELIVERY F.O.R. NIGEL & VAT. VALID FOR COD PURCHASES ONLY. WHILE STOCKS LAST. ILLUSTRATIONS MAY DIFFER. E&EO.

POULTRY

Keep your chickens healthy

Smallholders who keep a small flock of chickens very often do not bother to vaccinate their birds against diseases. They reason that if they feed them well, do not overcrowd and maintain good hygiene, the chickens will be able to withstand disease. However,

when one considers how easy it is for diseases to spread, it might be worth rethinking this policy.

A healthy chicken will remain healthy as long as there is no direct contact between the chicken and viruses, bacteria, protozoa or mycotoxins. The chickens can be exposed to

diseases through contact with wild birds, rodents or their faeces, insects such as flies and litter beetles, wind, dust and feathers from passing vehicles ~ even their water might be carrying disease. People who work on the plot or even visitors may carry disease-carrying organisms on their clothing or shoes.



Some vaccines are administered as eye-drops.

Stress may arise in the flock due to a variety of factors and can also render the poultry vulnerable to passing diseases.

Vaccination is the process by which a vaccine is given to

Continued on page 35

IN THE GARDEN

From page 31

many plants and which can be planted from seedling rather than direct as seed, for example, peppers, brinjals, tomatoes and cabbage,

consider buying trays of six or eight seedlings rather than packets of seed. Seedlings are more expensive, but they will give you a harvest at least six weeks ahead of what you will achieve if you sow seed first. The only downside of planting seedlings is that you are limited to what your nursery will supply, which will tend to be modern commercial hybrids, unless you have a contact with a specialist seedsman of more unusual varieties.

Sheep Livestock

071 607 7337 / 082 897 6849

It's Sheep Shearing Season!

SHEEP SHEARING SERVICE
SKAAP SKEER DIENS

082 878 5623

083 273 4267

082 602 4462



Wastewater Treatment Systems

- Does your septic tank smell?
- Has your French drain failed? ... Again?
- Are you polluting the neighbour's borehole water?
- Are you compliant with the National Water Act?
- Would you really like to reuse your water?

Each Scarab system...

- Is designed to comply with the National Water Act
- Is simple to install, maintain and operate
- Requires no chemicals (Ozone optional)
- Uses minimal power
- Is almost maintenance free
- Produces clear and odourless water
- Is modular to suit new loadings
- Is sized from the single house to large estate



The Scarab system is:

- Featured in the Dept of Water Affairs best practices guideline policy
- Listed as a top 100 SA company for its technology in 2004, 2005 and 2006, and for receiving the Bio2Biz award in 2006.
- A preferred supplier to the Dept of Health - Rural Clinics (KZN)
- Featured on SABC3 Business Update



SABC 3
Business Update

Johan 082 535 4576

e-mail: johan@scarabsa.co.za

e-mail: scarabwater@gmail.com

Tel: 014 736 3463

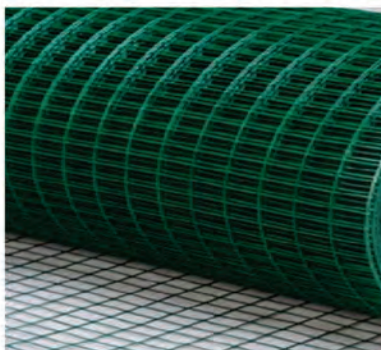
Web: www.scarabsa.co.za

TREAT YOUR WATER TO A SCARAB SYSTEM

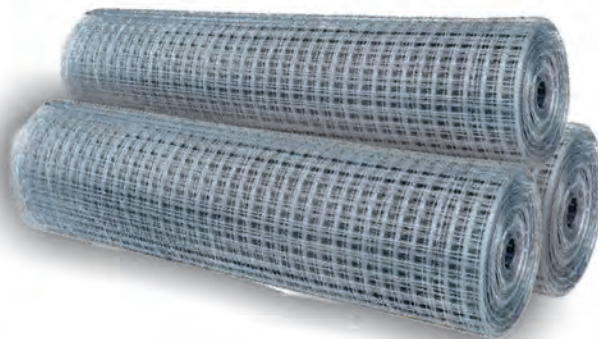
MESH FOR BIRDS



Open 7 days a week from 8am to 5pm



Galvanised Welded Mesh
BEFORE & AFTER WELDING



226 High Road, Pomona
Kempton Park
Inside Birds & Pets For Africa



www.meshforbirds.co.za
Barry 083 679 1317
Adelle 083 427 7101

From page 33

to the birds: in the drinking water, sprayed or by injection. It must penetrate the body. The smallholder needs to understand that a vaccine is not a medicine, but is rather a preventative measure against disease. It contains the disease-causing organism in a weakened state. In an overdose it can kill the birds. Correct dosage stimulates the formation of antibodies, which is the body's way of fighting the disease. There are vaccines available against Newcastle Disease, Infectious Bronchitis, Marek's Disease, *Salmonella*



Some vaccines are given by injection eye.

gallinarum, *Salmonella enterica* and *typhimurium*, Infectious coryza, *Mycoplasma gallisepticum*, Fowl cholera and Fowl pox. There are different strains of Newcastle Disease, so different vaccines are administered at different times.

Note though that vaccination against Avian Influenza is prohibited by law in South Africa.

There are different ways of vaccinating chickens: by spray, drinking water, injection and the eye-drop method.

Some vaccines must be given using a specific route, for example, pox vaccination is only given via a wing-web-stab method, not in drinking water or in the

veterinary chemists, co-ops, veterinarians and sometimes at feed stores.

Vaccines are fragile in many respects and require very careful handling to ensure they retain their potency. Poor handling procedures will, in most cases, result in a rapid decline of potency. The important handling requirements are:

☐ On receipt of the vaccine,

Continued on page 37

WIRE WORK
Suppliers of:
• BARBED WIRE • STANDARDS & DROPPERS
• NETTING WIRE • B GRADE WELDED MESH
• WELDED MESH • GATES, POSTS & STAYS
• GALVANISED WIRE • DIAMOND MESH WIRE
Welded Mesh 1.8 x 100 x 50 x 30m = R850
We only sell quality products!
Kerry: 084 840 0409
kerry.wire@hotmail.com

Hornbill TRAILERS
Finance available
SEPTEMBER SPECIALS

2.4 x 1.2m utility trailer	R11800
3m x 1.5m utility trailer	R13800
3m x 1.5m utility trailer 1.6t axle 14" wheels	R16800
4m x 1.8m double axle utility trailer, braked	R34800
4m x 1.8m double axle cattle trailer, braked	R38800
5m x 2m double axle car trailer, braked	R35800
6m x 3m single axle advertising trailer	R14800

SABS APPROVED www.hornbilltrailers.co.za **Vanderbijlpark**
and registered body builder **Hendry 083 276 4669**

Many more models, always in stock. We deliver

DAM AND POND SEALER

AQUA PLASTECH

UBERSEAL Multipurpose Sealant

THE MOST CONVENIENT AND COST EFFECTIVE WAY TO SEAL A LEAKING DAM OR POND

- Easy to apply
- No need to empty out the water
- Specific areas can be targeted instead of the whole dam
- Non-toxic to animals and plants
- Rapid and cost effective
- No need for heavy equipment or engineers
- Works for most soil types from sandy loams to clays
- Can withstand prolonged wet/dry cycles

How it works:



"Perfect for sealing leaking EARTHEN dams and ponds"



SEALS CEMENT DAMS AND OTHER MASONRY WALLS

- Excellent Adhesion
- Cost Effective & Gives Long Lasting Protection
- Highly flexible
- Waterborne for easy application and cleanup
- Safe to use with minimal vapour
- Dries to a clear low sheen finish
- May be painted over with any acrylic based paint
- Tested to ASTM E514.74 - Rated 'E' for Excellent on water permeance

"UberSeal is well suited as a primer for acrylic architectural topcoats, elastomerics and roofing paints."



Follow Us

www.aquaplastech.co.za info@aquaplastech.co.za

Sales: 086 199 5036



MFANGANO
SOLUTIONS (Pty) Ltd

Ariens Tractor
Mower 54"



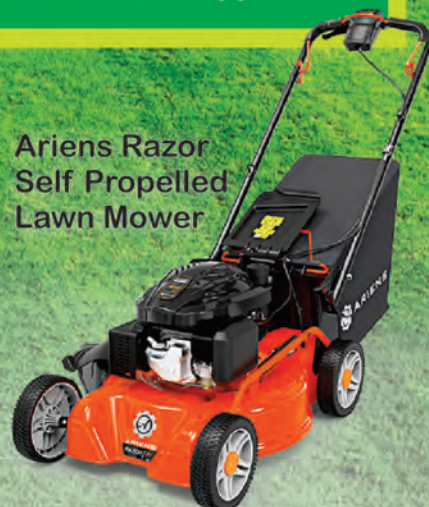
R59 665.98
Vat Incl.

Ariens log
splitter 27 ton



R41 063.36
Vat Incl.

Ariens Razor
Self Propelled
Lawn Mower



R9 541.17
Vat Incl.



15% OFF

Gravely Atlas
JSV 3000

Gravely Pro 24
High wheel mower



R20 963.55
Vat Incl.

Ariens Zoom 50"
ride on mower



R73 851.08
Vat Incl.

Please call us for Wood Chippers ~ Big and Small, Horizontal Wood Grinders,
Forestry Mulchers, Wood Shaving Machines, Lawn Mowers, Log Splitters
& Compost Turners. Also Brushcutters, Chainsaws & Blowers etc

sales@mfangano.co.za
precious@mfangano.co.za
011 440 2072/072 244 9551
19 6th Street, Wynberg, Sandton, 2090
www.mfangano.co.za



How to manage your chicken manure

If you have chickens, you have chicken manure and there are different ways to manage the manure.

If your chickens are free range, naturally there will be less manure in the coop, because they drop their manure as they move around your plot. But there will still

be an accumulation of manure over time if your chickens sleep in a coop at night.

Chicken manure is prized as fertilizer. However it is what is known as a "hot" manure, which means it should not be put straight on to the garden in its raw state, as it will burn

the plants. This is because chicken manure is so high in nitrogen.

The material that you use as bedding for your fowls will also influence the composting process. Chicken farmers normally use bedding such as straw, shavings, sawdust or dry leaves to provide a dry

cushion for chickens and to control odour and pests.

The coop bedding can be collected with the manure and dumped into your compost heap.

Some owners prefer to pick manure and soiled bedding out of the coop on a daily basis; others will add new bedding over droppings and collect it less frequently.

VACCINATION

From page 35

check and record that the vaccine has been transported in the recommended manner, which is usually in the chilled or frozen state. Prolonged

exposure to atmospheric temperature will result in rapid loss of potency.

☐ Check the expiry date of the vaccine – vaccines have a date by when there is a significant risk that they will no longer retain their potency and will not produce the immunity required. The expiry date is based on the vaccine being handled and stored in the recommended manner.

☐ As soon as possible place the vaccine into recom-

mended storage conditions. Read the instructions to find out what these are.

☐ If you have to mix the vaccine with water, ensure that the water does not contain chlorine (ie is not municipal water). Some smallholders add skimmed milk powder to the water, as it is believed that that can act as a stabiliser and it eliminates the negative effects of chlorine. Add one teaspoon for every litre of water.

Continued on page 38

Continued on page 38

Alpacas For Sale
Magicalpaca's Farm
In Kempton Park offers:
A selection of pedigree Alpacas at competitive prices

Coverings available from stud quality herd sires
Call Lee Ermen
082 455-4288
bounty@iafrica.com

SOLAR MAN
Pre-planning essential for quotations

- Solar Power
- Backup Power
- Solar Borehole Pumps
- Solar Geysers
- Solar-friendly Appliances

www.solarm.co.za
Tel: 012 809 1525/1427
solarman@mwebbiz.co.za

COUNTRY STYLE FENCING
TREATED POST & RAIL FENCING

- Push-fit
- No nails or screws
- No Maintenance
- Very quick
- Very strong
- CCA TREATED

GUM POLES For Cattle, Horses & Gardens
POLE & TIMBER SUPPLIERS
TEL 011 640 7975 ~ 072 113-4637
www.poleandtimber.co.za

PLEYSIER INCUBATORS • 27 11 659 8041/2

NEW ARRIVAL

24 Egg incubator Automatic turning R2 400	48 Egg R2 900 Automatic turning
56 Egg R3 200 Automatic turning	96 Egg incubator R4 500

CONTACT PLEYSIER INCUBATORS 011 659 8041 or 659 8042 | CELL: 082 936 5843
Order on our website www.pleysier.co.za or email frank@pleysier.co.za
2006/169666/23 | VAT: 4290232802 | SARS NO: 2022 1406 For Export

TRANSLUCENT
POLYCARBONATE SHEETING
Flat, Profiled & Multi-wall Polycarbonate Roof Sheetting

At Affordable Prices
SAVE ON ELECTRICITY due to natural lighting

DIY Polycarbonate Multiwall Awning
970cm x 1.2m & 970cm x 1.5m
New!!
Clear, Bronze, White

DIY Skytiles
Translucent Lightweight UV Protected
We also supply:
Turbine ventilators
Roof fasteners
Butyl sealants
DIY Skytiles

MASBIZ TRADING CC

Now also available: Mythos Greenhouses
248 x 185 x 216cm

Tel: 011 894 2873 / 079 882 2515
carolann@masbiz.co.za
192 Dr Vosloo Road, Bartlett, Boksburg
www.masbiz.co.za

Borehole Drilling

Throughout Gauteng

- 50 years' experience
- Modern, powerful equipment
- Prompt, reliable service
- Best rates and advice



AND: We can arrange your associated requirements, eg: borehole siting, pump installation, piping, electrical work, etc.

Lanseria Drilling

BOREHOLES - DRILLING & REPAIRS

076 727-6464
082 552-6071
011 957-2588

POULTRY

From page 37

Different bedding materials have different carbon levels, so the proportion of bedding to manure will vary depending on the type of bedding used. A compost heap needs a combination of green and brown material, along with air and moisture. In this case the manure is regarded as green and the bedding will be your brown material.

To keep things simple most composters follow the general rule of 1 part brown to 2 parts green. However, because chicken manure is so high in nitrogen you may be more successful using a 1:1 mixture. Instead of adding the soiled bedding to your existing compost heap, you could make a separate pile just of bedding and chicken drop-

pings. It is preferable to do this when you have a large amount of bedding and manure, as the pile should consist of a cubic metre of material. You can then follow a "hot" compost process.

The requirements for hot composting using the so-called Berkley method are as follows:

- ☐ Compost temperature is maintained at between 55-65°C;
- ☐ The C:N (carbon:nitrogen) balance in the composting materials is approximately 25-30:1;
- ☐ The compost heap needs to be roughly 1.5m high;
- ☐ If composting material is high in carbon, such as tree branches, they need to be broken up into small chips;
- ☐ Compost is turned from

Continued on page 39

VACCINATION

From page 37

Alternatively, buy a bottle of distilled water when you purchase the vaccine if you don't have clean untreated water available.

☐ Remove the vaccines from storage immediately prior to use. Only remove and re-constitute enough for immediate needs and repeat this through the day if more is required. Do not mix what is required for an entire day at the start of the day and leave it stand until required, as the vaccine will rapidly lose its efficacy.

☐ Protect the vaccines after mixing by holding them in an ice bath. Some vaccines have a very short life once mixed.

☐ Use the recommended administration techniques and do not vary these without veterinary advice.

☐ Always clean and sterilise the vaccinating equipment thoroughly after use and destroy unused mixed vaccines after the task has been completed. Some vaccines have the potential to cause harm if not destroyed properly.

South Africa has a list of controlled and notifiable diseases that are listed within the regulations of the Animal Diseases Act (No 35 of 1984). Listed poultry diseases are Newcastle Disease, Salmonella gallinarum, Salmonella enterica and Avian Influenza and outbreaks of these must be reported to the State Veterinarian, who maintains Gauteng offices in Pretoria, Germiston, Randfontein, Vanderbijlpark, Hammanskraal and Johannesburg.

Shadow Carports & Palisade

Any shape or size | All material – A Grade | SABS Quality workmanship

18 Years experience



082 466 3335
shadow.carports@gmail.com

From page 38

outside to inside and vice versa to mix it thoroughly. Combine the correct ratio of bedding and manure at one time to form a pile, then add moisture (material should be about as wet as a well wrung sponge). This will produce a hot pile.

Leave it for four days.

Heating is necessary to destroy pathogens and weed seeds, but temperatures above 70°C can kill beneficial microorganisms and slow the process.

Once the centre of your compost pile has reached the required temperature for three days it will start to cool. After it cools, pull the centre apart and move the core material to the edges and bring the edge material into the centre to heat. For 1 cubic metre of material repeat the process of bringing edges into the core at least three times.

Another suggestion is to cover your entire chicken coop in wood chips.

Then turn every second day for 14 days. After that most of the material will be dark, crumbly and sweet-smelling like soil.

Another suggestion is to cover your entire chicken coop in wood chips. If you don't have a chipper, contact a tree feller in your area, who should be able to sell it to you quite cheaply.

When spreading the wood chips be sure to cover everything. They will provide a lot of scratching material for your chickens. Often there are insects in the chips, so that provides food for your chickens as well. It also helps cut down on any chicken odour.

It is best to lay the wood chips in the autumn or winter to give the chickens ample of time to work them over.

Leave the chickens to scratch away for a couple of months. You will see when the wood chips are starting to vanish. Your ground will begin to look like really rich soil and less like a mulched area.

It is then advisable to start sifting. You can make a sifter very easily. All it takes is building a square frame from four pieces of wood and placing some screen material over it. Use a shovel and scoop up piles of the soil your chickens have been working over for you. By sifting through it, you stop any big pieces of mulch or manure that have not been fully broken down from making it into your compost pile. You will get a very fine, rich looking compost at the end of this process.

A final option in managing

your chicken droppings is the deep litter method.

Start by spreading a 7–10 cm layer of clean litter on the floor of the coop. Wood shavings are the best, or peanut husks.

You can use straw, but need to guard against mould.

About once a week, as the manure accumulates (mostly under the roost), toss on another thin layer of litter. It's important to keep the bedding aerated. Add a handful of scratch grains or food scraps daily, and your chickens will stir the litter for you, incorporating oxygen to aid decomposition.

Pay attention to areas that they might neglect or round the waterer, raking regularly to keep it turned over and dry.

If you see any caked litter, use a rake or fork to help break up the clumps and redistribute the moisture.

Continued on page 40

RANDVAAL
TREKKERS & IMPLEMENTE

117 Kapokboom Street,
Valley Settlements,
Randvaal

**Replacement Parts
New & Used:
Massey Ferguson
Ford & Fiat**

- * Transport
- * Tractor Services
- * Tractor Repairs
- * Implement Parts, Services & Repairs
- * Export
- * Datadot

We Buy & Sell Tractors

Tel: 016 365 6369 / 076 957 5924

www.randvaaltrekkers.co.za

A-Raam huis

Voltooi jou huis met ons staalstruktuur

STAALSTRUKTUUR 210 vk.m
OPGERIG

R226 135 btw. uit.

Staalstruktuur vir 3 slaapkamers en 2 badkamers

OPGERIG - 8 TOT 10 DAE

STAALSTRUKTUUR 101 vk.m
OPGERIG

R144 100 btw. uit.

Staalstruktuur vir 2 slaapkamers en 1 badkamer met motor afdak

SSF
STEEL SPACE FRAME STRUCTURES CC. T/A
Buildings | Factories and Warehouses | Design and Construction

BOUWERK UITGESLUIT

PIETER 082 497 4247 | info@afame.co.za | www.afame.co.za

WWW.

TheSunPays

.CO.ZA

100L Low Pressure solar geyser from **R3 290**
Auxiliary tank included

Solar panels @ **R6,28** per Watt

Solar pump ~ 140m max head
@ **R23 754**, including 9x 270Watt panels, pump and controller.

www.TheSunPays.co.za

082 515 1655 or 012 734 0915

All prices include VAT | Free delivery 100km from Cullinan
Full prices and specs on website | No installation included

ALL PRICES INCLUDE VAT



95 Ampthill Avenue, Benoni

011 422 6354 | 072 847 0978

Pictures for illustrative purposes only. Actual products may differ. E&OE

Borehole Pumps

0.375kW with 30m cable
0.55kW with 40m cable
1.1kW with 2m cable
1.1kW with 60m cable

Includes cable & control box



from R2 195
*VAT included

Booster Pumps

0.75kW
Pressure switch
& pressure gauge



R1 299
*VAT included

Pool Pumps



from R1 299
*VAT included

0.375kW R1 299
0.75kW R1 490
1.1kW R1 545
with 2 x PVC connectors

Installations

Repairs

Irrigation Planning

FULL SPARES BACKUP & SUPPORT

www.magnumpower.co.za

LAWNCARE

How to prepare your lawn for summer

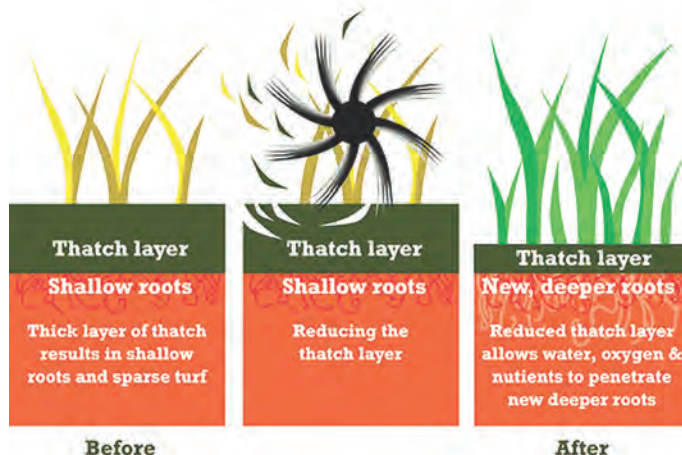
September, before the highveld rains commence, is a good time to scarify your lawn to prepare it for the growth period ahead. Assuming your lawn species is something like kikuyu, which puts out runners, scarifying involves loosening old runners in the lawn and removing them, as well as removing excess growth, old dried grass leaves and other detritus that will inhibit the new growth desirable for a lush, green lawn. Think of it as lawn

pruning, the same process that you should by now have completed on your fruit trees and rose bushes.

If you have an extensive lawn, mechanical multi-directional raking using a drag harrow or arena rake behind a tractor, lawn tractor or quad bike is the easiest way to do it. Close all the windows in the house to minimise the ingress of the clouds of dust that will result. For smaller lawns, or if you don't have mechanical means, a hard hand raking with a

Continued on page 41

SCARIFICATION



Before

After

POULTRY

From page 39

Keep the coop ventilated, even in winter. You should not notice any odour of ammonia. If you do, add more litter, as ammonia will cause eye and respiratory problems among your fowls.

Once or twice a year clean out the coop. Some experts say that you shouldn't remove all of the litter, but rather leave a base layer in place to inoculate new material with the established beneficial microbes. If the manure-litter

compost you remove is thoroughly decomposed and odourless, you can work it directly into garden beds. If some of the fresher manure hasn't thoroughly decomposed, simply add it to another compost pile.

Besides the time savings, deep litter is reported to help control coccidiosis, reduces aggression, keeps the chickens warm and supports chicken health by producing vitamin B12.

From page 40

metal rake will be necessary to loosen the runners dead growth.

Next, assuming you have a motor mower with a grass catcher, set the cutting deck to its lowest height and mow the lawn, cutting off the loosened runners where they enter the soil and removing all the loosened dry material. If your mower is not equipped with a grass catcher cut the lawn nonetheless, but you will have to rake and remove the cuttings by hand. Add the cuttings to your

compost heap, because they contain very viable bits of runner which, if applied to your flower beds as mulch, will soon result in grass growing in your beds, which you don't want.

Hopefully the scarifying and raking process will take you to the end of September or early October, just in time for the first rains.

Therefore, after scarifying, pray for rain to soak into the lawn to soften the soil. If this doesn't happen, give the lawn a good soaking with a sprinkler before loosening the

soil with a spiked or hollow-tine roller or, if your lawn is small or you don't have access to a roller, by pushing a garden fork into the soil every few centimetres and wiggling it back and forth. Only after you have loosened the soil, sprinkle your lawn fertilizer, usually limestone ammonium nitrate (LAN) evenly over the surface, and water again (or pray for rain...) and hey, presto! Within a few weeks your lawn will be back to its green summer lushness (and you will be back to spending your free time mowing).

Don't spread the fertilizer before scarifying, or after scarifying but before loosening. Before scarifying will simply result in you removing the fertilizer granules when you mow or rake up the loose grass, and doing so before rolling will result in much of the now-moist fertilizer being picked up by

the roller drum off the damp soil.

Moreover, don't leave dry fertilizer granules lying on the grass but try to water them well into the soil as quickly as possible, firstly because concentrated fertilizer can chemically burn the plants in the grass and, secondly, because the little pellets can be mistaken as seed by seed-feeding birds, which can be poisonous to them.

Top-dressing

Contrary to the old-fashioned view, top-dressing does not have to happen every spring. If your lawn surface is

Continued on page 43



Grass runners spoil the look of one's lawn.

Fruit Trees
Olive, peach, nectarine, plum, almond, apricot, walnut, prune, pomegranate, pecan nut, apple, cherry pear, fig, quince, mulberry, lemon and grape vines.

Shade Trees
Vrugtebome
Olyf, perske, kaal perskes, pruim, amandel, appelkoos, okkerneut, pruimedant, granaat, duiwe, pekanneut, appel, kersie, peer, vy, kweper, moerbe en suurlemoen.

Skadubome
Vereeniging
Douw 084 506 5125

WaterMan
Drilling & Pumps

- Borehole Yield Testing SANS 10299 BWA app
- Water quality testing SANS 241
- Rehabilitation of Existing Boreholes
- Borehole pump sales & installation
- Exploration & Monitoring drilling
- Reverse Circulation Drilling (RC)
- Symmetric Drilling
- Large Diameter Drilling
- Water borehole drilling

Find us on: **facebook**

info@watermandrill.co.za
www.waterman-drilling.co.za
BRONKHORSTSPRUIT

Tel: 013 932 1740
Cel: 079 526 7196
Fax: 013 932 2352

Dam Linings & Tarps

Reservoir Linings Mesh Dams Chicken Run Curtains

Earth Dam Linings Feedcovers Truck Tarps

TATA MA TARPS & LININGS
072 279 3294
www.tatamatarps.co.za

SEPTIC TANK PUMPING



0861 11 33 24

WE TAKE YOUR SHIT!

Reka . Rekisho . Holimo Thenga . Thengisa . I-Swop
Buy . Sell . Swop Koop . Verkoop . Verruil

ALL FREE ... & COUNTRYWIDE

**NEW
or
USED
Goods**

SASFOX.co.za
**SA SMALL FARMERS
ONLINE EXCHANGE**
Buy . Sell . Swop Koop . Verkoop . Verruil

Access sasfox.co.za from your
desktop, laptop, palmtop or
cellphone

- ★ Buy animals, goods, farm machinery & produce
- ★ Sell animals, goods, machinery & produce
- ★ Swop fruit, veg, meat & dairy with neighbours

www.sasfox.co.za

**DEALERS
WELCOME**

Simple to use, fast and very effective

Register online to buy, sell or swop @ sasfox.co.za

Enquiries: 011 979 5088 or

email admin@sasfox.co.za

or accounts@sasfox.co.za

sasfox.co.za is a division of: **Bowford Publications** (Pty) Ltd

LAWNCARE

From page 41

uneven, perhaps because it is quite newly laid, or because during the winter you dug trenches across it to lay piping or cables, or, indeed, because you dogs dug holes in it, now is the time to apply a smoothing layer of top-dressing. But if your lawn is even and properly cared for top dressing is an additional expense, which is unnecessary, at least every year. If you have suitable clean soil available on your plot you can apply your own, ensuring first that it is weed and seed-free, as well as sifted of stones. Any relatively

loamy soil can be used, but don't be tempted to use building sand, or river sand. If you don't have your own soil you will have to buy in a load of lawn dressing.

To calculate the number of cubic metres of top-dressing to buy measure the area of your lawn by multiplying the length in centimetres by the width in centimeters and dividing the number by 20 000 to achieve a layer 0,5cm thick, by 10 000 to achieve a layer 1cm thick, or by 5 000 to achieve a layer 2cm thick.

(Tip: If you have a potato or vegetable washing or processing plant near you investigate buying a load of the soil they wash off the veg before processing. It's the most magical top dressing you can find because it's fine, but loamy, and comes with ready-built-in fertilizer, a residue of the vegetable growing operation from

whence it comes).

The easiest way to spread top-dressing is to dump wheelbarrows-full on the lawn about 2m apart in both directions and, using the back of a steel rake, to spread it evenly across the surface to the desired thickness. Fill in if the layer is not thick enough, or keep spreading outwards if it's too thick. If you can do this simultaneously with the wheelbarrow-dumping so much the better because leaving the piles of soil on the lawn for any period of time will kill off the grass growing underneath.

While top dressing can be used to even out indentations it should not be spread more than a centimetre or two thick ~ you should still be able to see the top leaves of the grass peeking through.

☐ And finally ... the mower
So you used your mower to scarify. In the process you will have choked the air filter with

dust and probably ruined, or at least severely blunted, the blades (and will also have got dust into the oil).

After scarifying, therefore, is the time to service the mower.

Drain the sump and refill with clean oil for the summer.

Remove and replace, or at least clean, the air filter. If it's a sponge type wash it in soap and water, let it dry and give it a light coating of light oil before refitting it.

Remove the blades and ensure they are not nicked or unbalanced through wear. Replace them, or sharpen them and re-balance them before refitting them.

CATTLE FODDER
60 square bales
+/- 12-15kg
(loose bales ex hand baler)
@ R12 each
Cash & Collect Bredell
Pete 072 587 9137

Goods for sale?
SASFOX.co.za
SA SMALL FARMERS
ONLINE EXCHANGE
Buy . Sell . Swap . Kapa . Verkoop . Verruil

RIPPLE CREEK
NURSERY & ORGANICS
Weed Free Organic Compost
Lawn Dressing • Garden Soil
Potting Soil • Kikuyu Instant Lawn
Veg & Flower Seedlings, Trees, Fruit Trees, Shrubs, Roses, etc.
TIME TO TOP DRESS + COMPOST
PLACE YOUR ORDER NOW
Special:
Compost or Lawndressing Bags: Buy 10 & get 1 Free!
Open - Sunday to Friday / Closed - Saturday
Deliveries to the East Rand only
Tel: 011 965 1777 or 082 875 9507
78 Elm Road, Benoni Agricultural Holdings

M & J AUSTRALORP
Breeding Farm
Lilyvale, Benoni
071 878 9206
Potch Koekoeks also available
~ Quality Pure Breed Australorp Chickens
~ Day/Week-old Chickens available on a weekly basis
~ Vaccinated for Newcastle Disease and bronchitis
~ Parents available to view
~ By appointment only
POINT-OF-LAYS AVAILABLE
Any age available any time
Day-old chicks to point-of-lay always available

UPGRADE TO A HONDA
Sprayers for Firefighting, Cleaning & Pest Control
220 - 750 litre skid mounted sprayers
500 - 5 000 litre trailer units
60 & 120 litre trolley sprayers
MULTI
Husqvarna
580BTS Blower
Rated the world's best
Firefighting Blower
www.mfpafrica.com
e-mail: carel@mfpafrica.com
rynhardt@mfpafrica.com
1 GRANT ST
NEW STATE AREAS
SPRINGS
TEL: 011 817-3044/84
082 444-8952
FAX: 011 817-3063
VISA AMERICAN EXPRESS
FIRE & POWER

BREDELL SAND
EXCELLENT SERVICE | SAME DAY DELIVERIES | COMPETITIVELY PRICED
PRODUCTS
Suppliers of top quality aggregates & organics.
• RIVER SAND
• PLASTER SAND
• BUILDING SAND
• STONE
• G5/G7 FILLING
• DRIVEWAY ASH
• TOPSOIL
• COMPOST
• LAWNDRESSING
• COBBLE BRICKS
SERVICES
SITE CLEARING & RUBBLE REMOVAL
DEMOLITION
COMPREHENSIVELY INSURED TREE FELLING
TLB HIRE
TIPPER HIRE
WATER CART HIRE
Wesley 083 648 6283



The book that every smallholder needs

Contents will include:

- Infrastructure (fencing, septic tanks, irrigation etc)
- Keeping Livestock
- Crop Production
- Pasture Management
- Farm & Garden Machinery
- Legislation applicable to smallholders
- and much more!



**LIMITED STOCK LEFT ~
Order your copy TODAY!!**

Only R180-00 VAT and DELIVERY included

**34 chapters,
fully-illustrated
208 pages**

(Complete & email to gautengsmallholder@gmail.com or fax to 086 602 3882

Please send me copies of the Smallholder's Companion.

Payment can be made by postal order or EFT (we will supply bank details on request)

Name:

Postal Address:

Tel/Cel number:

Phone 011 979-5088 or email gautengsmallholder@gmail.com for EFT & delivery details.

A receipted Tax Invoice will be issued to you as acknowledgement of your order and you will be notified of your Post Office tracking number or other delivery details.

DIARY

ATTENTION CRAFT MARKETS, CLUBS ETC.: If you would like details of your events included in the Diary, please fax or email your information to the Editor. For non-commercial enterprises this service is FREE.

NOTE: FARMERS' & CRAFT MARKETS. For a listing of REGULARLY HELD markets and fairs please see the separate section on page 47. Only markets that are held infrequently, or less than weekly, are now listed in this calendar section.

Every Sunday
Cattle drive with City Slickers breakfast, Diamond X Cowboy Ranch, near Rayton. Call Rudan on 082 410-3180
horses@diamondxrancho.co.za,
www.diamondx.co.za., R500 per person.

Mnandi Methodist Church, 09:00, Mnandi Centre, cnr Tulip and Short Streets, Jen 012 651-5509. Gail 072 477-0708., A small community who worship together. We have a Youth and Children's church.

Premier Mine Presbyterian Church, Lower Oak Ave, Cullinan. Garden of Remembrance (Columbarium), 079 060-9990 or 012 734-1640, Worship and Sunday school. Holy Communion for all on the 1st Sunday of every month.

Every Monday
Alcoholics Anonymous. 'Courage to Change' Group meeting, 19:30, Benoni Agricultural Holdings, Marcus 082 042-7730. Warren 082 335-0049. Glen 072

239-3024., If you want to drink – that's your problem! If you want to stop – that's our problem! No fees; no dues; just concerned fellowship.

2018

September

1: Bonaero Market, Evangelical Lutheran Church, 26 Geldenhuys Rd, Bonaero Park, 08h00-14h00. Craft, food stalls, coffee shop, white elephant, veg, books, kids' play area, safe parking. Call Magda 083 845-7660

1: Charity Country Market with Food & Entertainment, Uitzicht, Van der Hoff Rd extension, Pretoria West, in aid of the Manger Care Centre. 09h00 – 15h00. Family & pet friendly. Call 012 376-0042 or 087 944-2110

1: Bokkie Park Food & Craft Market at the Bokkie Park, Southvale Rd, Parkdene, Boksburg. 09h00 – 14h30. Huge variety of crafts and food stalls, live entertainment, tea garden, park activities, pony and camel rides. A great outing for the whole family. Contact Janine 072 713-3332

1: Garden World Spring Festival event: In Tune with Nature, 13h00 for 13h30. Anna Cilliers, Richard Cock and MayFord Seeds offer a delightful spring afternoon laced with good gardening advice from Anna Cilliers, paired with heavenly music & song brought to you by SA's most well-known conductor, Richard Cock. R100 pp & includes the event, a goodie bag, refreshments & fabulous prize giveaways. Contact Garden

World on 011 957 2545

1: Garden World Spring Festival event: Classic Car Show, 09h00 – 16h00. The Classic Car Show is a vehicle event worth noting. It's a fun experience that features vintage cars, classic cars, muscle cars and much more. It's the motor-heads go-to. Entrance is FREE. Contact Garden World on 011 957 2545

3-7 Introductory Course in Pig Production, ARC Irene. Contact: Ms Mpho Makhanya at makhanyam@arc.agric.za / 012 672-9153. 04 Provincial Public Consultation Workshop on Bankrupt Bush, SANBI Education Centre, Pretoria Botanical Gardens, 09:00. Contact Ms Lydia Bosoga 012 319-7686.

8: Brakpan Boeremark, cor van der Walt & Dirk van der Hoff Rds, Brakpan 09h00-14h00. Over 50 stalls, food, art, crafts, etc. Call Marius 082 904-8852 or 011 744-2322 8-9: African Bird Fair, Walter Sisulu National Botanical Garden, Roodepoort. Organised by BirdLife Africa

11-12 Dairy Processing: Yogurt and Cultured Milk course, ARC Irene. Contact: Ms Mpho Makhanya at makhanyam@arc.agric.za / 012 672-9153

15: Northern's Beekeeping Association members' meeting. Visitors invited from Pretoria & surrounds. For times, venue and details call Riekie van den Berg 082 972-1889

16: Elementary Organic Vegetable Gardening Course offered by Sought After Seedlings, Inner City Garden, Johannesburg. Time: 8:30 – 4:30pm, light refreshments are provided, as well as notes and the price is R1650 per person. Contact 082 365 0050 or email sales@soughtafterseedlings.co.za.

17-19: Cattle Artificial Insemination Course, Rothman Livestock Training Services, Muldersdrift. Call Lily 078 546-7985 17-15 Nov: Poultry Production course at Buhle Farmers Academy, Delmas. Course is of two months' duration and earns 39 SA Quality Assurance (Saq) credits. Call 087 803 0563

18-21 Dairy Processing: Cheese making course, ARC Irene. Contact: Ms Mpho Makhanya at makhanyam@arc.agric.za / 012 672-9153.

20: Cattle Pregnancy Awareness Course, Rothman Livestock Training Services, Muldersdrift. Call Lily 078 546-7985 21 National Public Consultation Workshop on Bankrupt Bush, SANBI Education Centre, Pretoria. 09:00. Contact Ms Lydia Bosoga 012 319-7686.

21: Calf Rearing course, Rothman Livestock Training Services, Muldersdrift. Call Lily 078 546-7985

25-27: Three-day Basic Conservation Agriculture Course, Foundations for Farming Gateway to Africa at African Blessings, Rustfontein Farm, Bronkhorstspuit. The courses comprise theory and practical training, including Conservation Agriculture Principles, Feed Your Family, Vegetable Gardens, Herb Cultivation, Uses of Herbs, Compost Making, Practical Home Remedies, Poultry Production, Introduction to Beekeeping, Agroforestry, Cover Crops, etc. Contact Neill Jackson on neill@foundationsforfarming.org Or 082 407 6774

28: The Market in the Garden, Garden Shop, Bram Fischer Dr, Bryanston. 09h00-15h00. Fresh produce, home industry & craft, food etc. Robyn 083 311-4768 28: Walkerville Farmers Market, 112 R82



Main Rd, Walkerville 18h00-22h00. Fresh produce, arts & crafts, food court and kids' play area. Call 079 076-7680

29: Fresh2U Farmers Market, Cor Main & High Sts, Modderfontein (behind 33 High St), 08h00-14h00. Over 50 stalls, fresh produce, homemade goods, plants, food etc. Call Jane 083 376-5567 or Chantelle 082 338-7818

29: Fresh Produce Market, Lakeside Mall Boathouse, Benoni. 08h00-13h00. Local fresh produce. Call Alma 079 940-0201

29: Windpomp Market, Broodblik & Koffiepit on the R51 between Pettit & Bapsfontein, 08h00-14h00. Homemade crafts, food stalls, bakery & coffee shop and entertainment. Call 083 445-1608

October

1: Bonaero Market, Evangelical Lutheran Church, 26 Geldenhuys Rd, Bonaero Park, 08h00-14h00. Craft, food stalls, coffee shop, white elephant, veg, books, kids' play area, safe parking. Call Magda 083 845-7660

6: Charity Country Market with Food & Entertainment, Uitzicht, Van der Hoff Rd extension, Pretoria West, in aid of the Manger Care Centre. 09h00 – 15h00. Family & pet friendly. Call 012 376-0042 or 087 944-2110

6: Christmas in October Food & Craft Market at the Bokkie Park, Southvale Rd, Parkdene, Boksburg. 09h00 – 14h30. Huge variety of crafts and food stalls, live entertainment, tea garden, park activities, pony and camel rides. A great outing for the whole family. Contact Janine 072 713-3332

8-12 Introductory Course in Small Stock management ARC Irene. Contact: Ms Mpho Makhanya at makhanyam@arc.agric.za / 012 672-9153. 8-13 Jun 2019: Grain Crop Production course at Buhle Farmers Academy, Delmas. Course is of 9 months' duration and earns 52 SA Quality Assurance (Saq) credits. Call 087 803 0563

13: Brakpan Boeremark, cor van der Walt & Dirk van der Hoff Rds, Brakpan 09h00-14h00. Over 50 stalls, food, art, crafts, etc. Call Marius 082 904-8852 or 011 744-2322 16 – 19: Oyster Mushroom Production Course, ARC-Plant Protection Research Institute in Roodeplaat, Pretoria. The course fee is R2500 pp. To book contact 012 427-9700/9740 or email trainingservices@arc.agric.za.

20: Northern's Beekeeping Association members' meeting. Visitors invited from Pretoria & surrounds. For times, venue and details call Riekie van den Berg 082 972-1889

22-24: Cattle Artificial Insemination Course, Rothman Livestock Training Services, Muldersdrift. Call Lily 078 546-7985

23-26 Introductory Course in Beef Cattle Management. ARC Irene. Contact: Ms Mpho Makhanya at makhanyam@arc.agric.za / 012 672-9153. 25: Cattle Pregnancy Awareness Course, Rothman Livestock Training Services, Muldersdrift. Call Lily 078 546-7985

Fire beater

FIGHT VELD FIRES EFFECTIVELY

Get yours TODAY: It's the LAW!!

1,8m long, thick but lightweight wooden handle keeps user away from smoke & flame

Unbreakable Fastening

Made from recycled rubber belting (not strips)

Only R90,00 cash & collect Price includes Vat. Trade enquiries welcome Scrap belting also available

Solid rubber sheet SMOTHERS flames FAST!

To order call **Derek Whittall** **078-706-6456**

DIARY

26: The Market in the Garden, Garden Shop, Bram Fischer Dr, Bryanston. 09h00-15h00. Fresh produce, home industry & craft, food etc. Robyn 083 311-4768
 26: Walkerville Farmers Market, 112 R82 Main Rd, Walkerville 18h00-22h00. Fresh produce, arts & crafts, food court and kids' play area. Call 079 076-7680
 26: Calf Rearing Course, Rothman Livestock Training Services, Muldersdrift. Call Lily 078 546-7985
 27: Halloween Market, Bokkie Park, Southvale Road, Parkdene Boksburg. Call Janine or Joan 072 713-3332
 27: Fresh2U Farmers Market, Cor Main & High Sts, Modderfontein (behind 33 High St), 08h00-14h00. Over 50 stalls, fresh produce, homemade goods, plants, food etc. Call Jane 083 376-5567 or Chantelle 082 338-7818
 27: Fresh Produce Market, Lakeside Mall Boathouse, Benoni. 08h00-13h00. Local fresh produce. Call Alma 079 940-0201
 27: Windpomp Market, Broodblik & Koffiepit on the R51 between Petlit & Bapsfontein, 08h00-14h00. Homemade crafts, food stalls, bakery & coffee shop and entertainment. Call 083 445-1608

November

1: Bonaero Market, Evangelical Lutheran Church, 26 Geldenhuys Rd, Bonaero Park, 08h00-14h00. Craft, food stalls, coffee shop, white elephant, veg, books, kids' play area, safe parking. Call Magda 083 845-7660
 3: Charity Country Market with Food & Entertainment, Uitzicht, Van der Hoff Rd

extension, Pretoria West, in aid of the Manger Care Centre. 09h00 – 15h00. Family & pet friendly. Call 012 376-0042 or 087 944-2110
 3: Bokkie Park Food & Craft Market at the Bokkie Park, Southvale Rd, Parkdene, Boksburg. 09h00 – 14h30. Huge variety of crafts and food stalls, live entertainment, tea garden, park activities, pony and camel rides. A great outing for the whole family. Contact Janine 072 713-3332
 6-8 Cattle Artificial Insemination course, ARC Irene. Contact: Ms Mpho Makhanya at makhanyam@arc.agric.za / 012 672-9153.
 10: Brakpan Boeremark, cor van der Walt & Dirk van der Hoff Rds, Brakpan 09h00-14h00. Over 50 stalls, food, art, crafts, etc. Call Marius 082 904-8852 or 011 744-2322
 11: Advanced Organic Vegetable Gardening Course offered by Sought After Seedlings, Inner City Garden, Johannesburg. Time: 8:30 – 4:30pm, light refreshments are provided, as well as notes and the price is R1950 per person. Contact 082 365 0050 or email sales@soughtafterseedlings.co.za.
 17: Northern Beekkeeping Association members' meeting. Visitors invited from Pretoria & surrounds. For times, venue and details call Riekie van den Berg 082 972-1889
 19-23 Introductory Course in Poultry Production, ARC Irene. Contact: Ms Mpho Makhanya at makhanyam@arc.agric.za / 012 672-9153.
 24: Fresh2U Farmers Market, Cor Main & High Sts, Modderfontein (behind 33 High St), 08h00-14h00. Over 50 stalls, fresh produce, homemade goods, plants, food

etc. Call Jane 083 376-5567 or Chantelle 082 338-7818
 24: Fresh Produce Market, Lakeside Mall Boathouse, Benoni. 08h00-13h00. Local fresh produce. Call Alma 079 940-0201
 24: Windpomp Market, Broodblik & Koffiepit on the R51 between Petlit & Bapsfontein, 08h00-14h00. Homemade crafts, food stalls, bakery & coffee shop and entertainment. Call 083 445-1608
 24: Christmas Night Market, Bokkie Park, Southvale Road, Parkdene Boksburg. Call Janine or Joan 072 713-3332
 26-28: Cattle Artificial Insemination Course, Rothman Livestock Training Services, Muldersdrift. Call Lily 078 546-7985
 29: Cattle Pregnancy Awareness Course, Rothman Livestock Training Services, Muldersdrift. Call Lily 078 546-7985
 30: The Market in the Garden, Garden Shop, Bram Fischer Dr, Bryanston. 09h00-15h00. Fresh produce, home industry & craft, food etc. Robyn 083 311-4768
 30: Walkerville Farmers Market, 112 R82 Main Rd, Walkerville 18h00-22h00. Fresh produce, arts & crafts, food court and kids' play area. Call 079 076-7680
 30: Calf Rearing Course, Rothman Livestock Training Services, Muldersdrift. Call Lily 078 546-7985

December

1: Bonaero Market, Evangelical Lutheran Church, 26 Geldenhuys Rd, Bonaero Park, 08h00-14h00. Craft, food stalls, coffee shop, white elephant, veg, books, kids' play area, safe parking. Call Magda 083 845-7660

1: Charity Country Market with Food & Entertainment, Uitzicht, Van der Hoff Rd extension, Pretoria West, in aid of the Manger Care Centre. 09h00 – 15h00. Family & pet friendly. Call 012 376-0042 or 087 944-2110
 1: Bokkie Park Food & Craft Market at the Bokkie Park, Southvale Rd, Parkdene, Boksburg. 09h00 – 14h30. Huge variety of crafts and food stalls, live entertainment, tea garden, park activities, pony and camel rides. A great outing for the whole family. Contact Janine 072 713-3332
 15: Brakpan Boeremark, cor van der Walt & Dirk van der Hoff Rds, Brakpan 09h00-14h00. Over 50 stalls, food, art, crafts, etc. Call Marius 082 904-8852 or 011 744-2322
 15: Northern Beekkeeping Association members' meeting. Visitors invited from Pretoria & surrounds. For times, venue and details call Riekie van den Berg 082 972-1889
 28: The Market in the Garden, Garden Shop, Bram Fischer Dr, Bryanston. 09h00-15h00. Fresh produce, home industry & craft, food etc. Robyn 083 311-4768
 28: Walkerville Farmers Market, 112 R82 Main Rd, Walkerville 18h00-22h00. Fresh produce, arts & crafts, food court and kids' play area. Call 079 076-7680
 24: Fresh2U Farmers Market, Cor Main & High Sts, Modderfontein (behind 33 High St), 08h00-14h00. Over 50 stalls, fresh produce, homemade goods, plants, etc.



Can't find the
GAUTENG
SMALLHOLDER
MAGAZINE
JUST-ASK...

Ask your shopkeeper to stock the magazine and we will deliver copies to the shop for you*

**Subject to certain conditions*

For enquiries phone
011 979 5088

Alternatively, you can subscribe and receive the magazine by mail, or read it online at www.sasmallholder.co.za
 Simply complete the coupon found elsewhere in this copy and mail it with your payment for R210 for a year.

TRACTOR MECH

Vaaljapie Specialist

Restoration of New & Old Tractors

For all:

- Sales
- Spares
- Rebuilds
- Service & Repairs

of your:

- Tractors
- Slashers
- Implements
- Stationary Motors

Johan Bouwer 072 576 2392
Martina Bouwer 072 861 6980

403 Bakenkloof Street Pretoria North 0182

LIVESTOCK SALES

Auctions: Bronkhorstspuit - Every Tuesday
Gys Taute 083 253 6906
Delmas - 2nd & 4th Thursday
Johan Taute 073 204 7646
Belfast: Wednesdays • Ermelo: Thursdays • Standerton: Fridays

Vleissentraal Ermelo
017 819 1106
www.vleissentraal.co.za

WEISSENTRAL

Regular Gauteng Farmers' Food Markets

NOTE: This is a listing ONLY of markets held weekly. Markets held less frequently (eg 1st Saturday of each month) are listed in the DIARY section of the magazine and we urge readers to check each month for dates and events of interest. We would like this list of food markets to be as comprehensive as possible. If you know of farmers' food markets that are not listed here, please email us the contact details of the organisers, and details of the market. Only FOOD markets are included. Similarly, if you know of markets in this list that have CLOSED please inform us so that we can delete incorrect or outdated information. We invite you to tell us of your experiences when visiting these markets so that we can better inform our readers. Were they as advertised? Was the produce on sale plentiful, well-priced, well-presented and fresh? Email your comments to editor@gautengsmallholder.com

DAY	WHAT	WHEN	WHERE	CONTACT	WHAT TO EXPECT
Thursday					
Every Thursday	Bryanston Organic & Natural Market	09:00 - 15:00	40 Culross Road, Bryanston (off Main Road)	Konrad or Glenda 011 706 3671 glenda@bryanstonorganicmarket.co.za	Quality hand crafted goods, unique art and fresh organic and naturally grown produce.
Saturday					
Every Saturday	The Red Windmill Village Market	09:00 - 15:00	104 Main Road, Walkerville	082 627 3134 or 072 637 9355 Stalls: 082 641 8982	Fresh produce, food stalls, coffee shop, plants, arts & crafts, book etc.
Every Saturday	Waterfall Estate Farmers Market	09:00 - 15:00	Waterfall Estate, Waterfall Cor Midrand	Robyn 083 311 4768	Fresh produce, pickles, preserves and home industry & craft, food etc. Enquire about stall prices.
Every Saturday	Pretoria Boeremark	05:30 - 09:30	Moreleta Street entrance, Krige Street ext, Silverton	012 804 8031 or 079 987 1025	Fresh produce & traditional bazaar treats like jaffles, kailings with pap & boerewors rolls.
Every Saturday	Bryanston Organic & Natural Market	09:00 - 15:00	40 Culross Road, Bryanston (off Main Road)	Konrad or Glenda 011 706 3671 glenda@bryanstonorganicmarket.co.za	Quality hand crafted goods, unique art and fresh organic and naturally grown produce.
Every Saturday	The Hazel Food Market	08:00 - 14:00	Greenlyn Village Centre, Cor Thomas Edison & Mackenzie St, Menlo Park, Pretoria	Rietha 083 554 5636 www.hazelfoodmarket.co.za	Fresh produce straight from the producer. Coffee, eats on sale
Every Saturday	Walkerville Farmers Market	09:00 - 15:00	112 R82 Main Road, Walkerville	079 076 7680 info@wfmmarket.co.za	Fresh produce, arts & crafts, food court and kids play area.
Every Saturday	Walkerville Country Market	09:00 - 15:00	Walkerville showgrounds on the R82	Noorunisha 074 141 8485	Fresh produce, crafter's market, food court, craft beer, kids play area and pet friendly.
Every Saturday	Bosheuvael Fresh Produce	10:00 - 19:00	54 Glory Road, Muldersdrift	Mitch 082 553 2846	Outdoor country experience working farm cattle, sheep pigs. Free range meat, cheese, eggs and poultry. Craft beer
Every Saturday	The Fresh Co-op Weekly Farmers Market	07:00 - 10:30	204 Allan Road, Glen Austin Halfway House, Gauteng	info.freshproducecoop@gmail.com 082 369 7755	Fresh produce, pickles, preserves, home industry, arts and crafts, food etc.
Every Saturday	Jozi Real Food Market	08:30 - 13:30	Pirates Sports Club, 25 Braeside Road, Greenside	Ingrid 083 532 2992 jozirealfoodmarket@gmail.com	Outdoor pet & child friendly, organic vegetables, food, arts & crafts
Every Saturday	Waenhuiskrans Plaas / Farmers Market	08:00 - 14:00	Cor of Veda & Enkeldoorn Ave opposite Montana Traders and next to Kollonade Centre	Phil Jansen - 083 5050 329 or office 012 567 6076 to book a stall	Stalls: Food, arts and crafts Fresh produce, eggs, chicken, meat, fruit and veg, Kiosk, Maders Pies, coffee
Sunday					
Every Sunday	The Red Windmill Village Market	09:00 - 15:00	104 Main Road, Walkerville	082 627 3134 or 072 637 9355 Stalls: 082 641 8982	Fresh produce, food stalls, coffee shop, plants, arts & crafts, book etc.
Every Sunday	Fourways Farmers Market	10:00 - 15:00	Cor Montecasino Boulevard & William Nicol Drive, Fourways	011 465 0827 www.ffmarket.co.za	Get your groceries... in the garden!
Every Sunday	Carlington Food & Craft Market	09:00 - 15:00	The Bru House on the R563 Hekpoort-Krugerdsorp Road	For stalls 0827824142 Debbie.Prinsloo@outlook.com	Restaurant, live music, safe kids play area, safe parking



Buy . Sell . Swop

Classifieds

- Free Classified advertisement for small farmers
- Free online market for Produce, Food, Veg, Preserves, Dairy, Meat Products...
- Buy what you need online
- Sell what you don't need online
- Swop goods, fresh produce etc...

For commercial DISPLAY advertising options on the site call or email us TODAY

No Commission, No Nonsense, Try it Today!!

www.sasfox.co.za

admin@sasfox.co.za
accounts@sasfox.co.za Tel: 011 979-5088 or 076 176-7392



Having difficulty finding a copy of

GAUTENG SMALLHOLDER

MAGAZINE

at your local store?

SUBSCRIBE

and we will send it monthly by post

Please post me the Gauteng Smallholder for the next 12 editions. My cheque/ postal order for **R210-00** made payable to **BOWFORD PUBLICATIONS**, is enclosed.

NAME: _____

Tel: _____ e-mail: _____

Postal Address: _____

_____ code _____

Please make cheques or postal orders payable to **BOWFORD PUBLICATIONS (PTY) LTD** (not the Smallholder). Post coupon & payment to: Subscriptions, Box 14648, Bredell 1623 or phone 011 979 5088 for our banking details if you prefer to do an EFT instead.

R210

for 12 editions

FREE CLASSIFIED ADVERTISEMENTS

Conditions:

1. Only private advertisements for used or second-hand items accepted. COMMERCIAL and BUSINESS advertisers should refer to our rates on page 1.

2. All Classified Advertisements received will be moderated and uploaded to our sister website, www.sasfox.co.za. They will remain on the site for a calendar month, unless requested otherwise by the advertiser.

3. No Classified Advertisements will be published in this magazine in future.

4. Only ONE insertion per application, and one category per coupon.

5. Classified advertisements must be renewed monthly for repeat placements.

6. The Publisher reserves the right to edit or omit advertisements at his discretion.

7. It is the Advertiser's responsibility to ensure we have received the advert.

SASFOX co.za

SA SMALL FARMERS

ONLINE EXCHANGE

Buy . Sell . Swap Koop . Verkoop . Verruil

USE THE COUPON BELOW FOR FREE CLASSIFIED ADS on www.sasfox.co.za

1 WORD (BLOCK CAPITALS) PER SPACE, PLEASE

Tel: _____

FOR ENQUIRIES TEL 011 979-5088

Send your Classified Advertisements to us:

BY FAX: 086 602-3882

BY POST: Box 14648, Bredell 1623

BY EMAIL: admin@sasfox.co.za

BY HAND: 370 da Costa Dr, Bredell, Kempton Park

48

www.sasmallholder.co.za

The trials of farming

Running a successful ~ and profitable ~ smallholding, or even a small commercial farm, is not easy and, frankly, more than a little luck is required for your efforts to be successful.

This was recently driven home to me by a retiree named Oom Koos, whose experience as a small farmer is neither unusual nor, sadly, joyful.

Upon reaching the statutory retirement age the fit, sprightly and young-at-heart Oom Koos expressed a desire to head into the country as a farmer.

So he took his retirement package and, pooling resources with his son, bought a small commercial farm near Brits.

There, after a period of some considerable expenditure establishing themselves, they set about planting some vegetable crops.

In due course they had a large field of glistening white pumpkins, each of which would have won a prize for its grandness and perfection at a Harvest festival competition. And alongside the pumpkins they had an equally impressive field of cabbage, the heads all uniformly large, round and blemish free.

So they sat down and did some sums. "Let's see..." they calculated, "we'll make R600 000 profit on the pumpkins. And another R600 000 profit on the cabbage. That's a profit of R1,2 million which we'll split between us.

"But," they added, "let's leave them in the field for just another week, to make sure the pumpkins are at the peak of ripeness and the cabbages are as big as they can possibly grow..."

Now remember that hailstorm that passed over Gauteng a few years ago? The one where the hailstones the size of cricket balls were crashing through peoples' roofs and landing in their lounges?

That hailstorm passed over Brits, too. Specifically over Oom Koos' farm. Of the pumpkin field, he said, there was no evidence thereafter that there was ever a pumpkin growing there, just a faint orange tinge to the soil. And of the cabbages, well, they too were simply compost.

So Oom Koos and his son, understandably disheartened, decided that vegetable farming wasn't for them, so they switched to breeding livestock, boergoats in particular, for which they perceived a good market at the time.

Off they went and bought some fine ewes. And they sourced a stud-quality billy goat, a fine fellow, for which they paid

R20 000. All was well, and the breeding programme was going according to plan. Until one day the billy goat managed to climb under, through, or over a supposedly goat-proof fence into the patch of lucerne growing along side. Where he proceeded to gorge himself, which caused him to bloat. Whereupon, sadly, he died.

Disappointed, understandably, at their loss, but undeterred, Oom Koos and his son went off and sourced another stud quality billy goat, another fine fellow, for which they paid R18 000. All went well again,

and the breeding programme was once again on track. Until one day the billy goat managed to climb under, through, or over the now-strengthened supposedly goat-proof fence into the lucerne patch growing alongside. Where he, too, proceeded to gorge himself, which caused him to bloat and he, too, died.

Becoming, understandably, a little disheartened, not to mention considerably out-of-pocket, Oom Koos and his son nevertheless displayed admirable fortitude and determination as they went off and sourced themselves a third fine billy goat, this time paying only R16 000. And even though he was cheaper than the first two, he was nonetheless a fine looking animal, with great conformation, and in magnificent condition, and they looked forward to the breeding programme continuing apace.

"But he turned out to be a moffie," cried Oom Koos. While the ewes showed some signs of desperation in their attempts to garner some male attention as they reached the height of oestrus, Oom Koos' fancy R16 000 stud goat merely wandered off to munch the leaves of the nearest bush.

At which point Oom Koos and his son decided to pack in their farming adventure.

They sold up everything and moved back to town. The son now fixes trucks and Oom Koos is the groundsman at a school. And in his spare time he breeds chickens, showing, I suppose, that you can take the farmer off his farm, but you will never take farming away from the farmer.



Easyhatch Incubation Equipment

Manufacturer of fully automatic industrial and hobby incubators



Exotic chickens



Exotic Waterfowl



Pekin Ducks



Jumbo Quail

We are a registered
bird breeder

Day old chicks
and older birds
available!

Also available: Sunflower seed and Mixed fowl feed

www.easyhatch.co.za www.rugarebirdfarm.co.za

GPS: S26° 41' 12.3" E27° 40' 26.2" (Vanderbijlpark)

Call us on:
011 051 9386
079 893 6383





JOHN DEERE

REVET FARM STORE

SPRING FESTIVAL

**01 September 2018
from 08h00-15h00**

Venue:
270 Ninth Road
Bredell
Kempton Park



JOHN DEERE EXPRESS

KIDS RIDE TRACTOR WITH TRAILORS

**Entrance Fee: Free
Gates Open at 08h00**

FANTASTIC FOOD

ICE COLD DRINKS

**JOHN DEERE SALE
ON SELECTED ITEMS**



T-SHIRTS from **R199**

CAPS from **R295**

HOODY'S from **R350**

GREAT SPECIALS

LAUNCH OF JOHN DEERE
RIDE-ON MOWERS and
PARTS
NEW E-RANGE



**20% DISCOUNT
ON SELECTED TOYS AND
SCALE MODELS**



FARM YARD

TOUCH | FEEL | FEED

**FRANK TAYLOR VASVAT
ORKES 09H00-13H00**



PONY RIDES

COME AND ENJOY A FUN FILLED DAY WITH US.

TRADING HOURS: Mon - Fri 07h00 to 17h00 | Saturday: 08h30 to 13h00
270 Ninth Road, Bredell Kempton Park 1619 | 011 965 1292 or 083 680 7747/6 | www.revet.co.za

We courier nationwide



Revet reserves the right to control quantities of any item offered for sale. All prices, illustrations and copy are correct at the time of going to press, however, Revet cannot be responsible for any changes or print errors that may occur. Products may differ from pictures. E&OE