

# **GAUTENG SMALLHOLDER**

**OCTOBER 2020**  
**HOW TO MAKE YOUR PLOT PROFITABLE**  
**ESTABLISHED 2000 ~ 20 YEARS**



**IN THIS EDITION:**  
**Need water? Try a windmill**  
**Covid recession: Start a plot business**  
**Preparing summer grazing**  
**... and more ...**





2500m<sup>3</sup>/h  
*Summer Special*  
~~R3400~~  
**R2999**



**MASTER**

Email: sales@bomaster.co.za

Phone: 013 935 3404

072 615 2393 / 082 411 9784

### **Portable Units**

### **Industrial Portable Units**

TOUCH  
SCREEN  
MUSIC  
PLAYER  
"only 6000 &  
13000"  
AIR  
PURIFIER  
WATER  
METER



6000M<sup>3</sup>/H

**R6200**

9000M<sup>3</sup>/H

**R8300**

13000M<sup>3</sup>/H

**R9400**

12 SPEED  
LEVELS



AIR VOL 18000 M<sup>3</sup>/H  
FROM  
**R 17 200**

### **Ducting Units**

AIR VOL 18000 M<sup>3</sup>/H  
FROM  
**R 11 900**

AIR VOL 23000 M<sup>3</sup>/H  
FROM  
**R 13 600**



**EVAPORATIVE  
AIR COOLERS**

QUICK  
CONNECT

## **AGENTS**

ENVIRO FORESTRY LOWVELD  
0137641091  
69 MAIN ROAD  
SABIE

ENVIRO POWER PRODUCTS  
0147361713  
SHOP 3, MAROELA MILE  
LOUIS BOTHA AVE  
LEPHALALE

ENVIRO CHAINSAWS BRITS  
0122522479  
15 DE BOER STREET  
BRITS

ENVIRO CHAINSAWS LOWVELD  
0130130013  
58 BROWN STREET  
NELSPRUIT

ENVIRO CHAINSAWS CENTURION  
0126532479  
VSP COMPLEX UNIT 7  
THEUNS & TOBIE ROAD  
HENNOPSPARK CENTURION

**OUR PRODUCTS WILL BLOW YOU AWAY**

**www.bomaster.co.za**



**PUBLISHED BY**

Bowford Publications (Pty) Ltd  
*Established 1985*

(Reg No 2004/019727/07)

PO Box 14648, Bredell 1623

Tel: 011 979 5088

or 076 176 7392

Fax: 086 602 3882

www.sasmallholder.co.za



facebook.com/gautengsmallholder

**PUBLISHER & EDITOR**

Pete Bower

gautengsmallholder@gmail.com

**DEPUTY PUBLISHER**

Catherine Bower

graphics@gautengsmallholder.co.za

**RESEARCH EDITOR**

Vanessa Bower

research@gautengsmallholder.co.za

**ADVERTISEMENT SALES**

Jackie Browning

Cell: 082 955 3162

adsales@gautengsmallholder.co.za

**PRINT ADVERTISING RATES**

(All Rates Full Colour, incl 15% VAT)

Full Page - R7 920

Half Page - R4 900

Quarter Page - R2 725

1/8 page - R1 440

Smaller sizes: R110 per col cm

(Minimum size - 4 col cm)

(Black only: colour rate less 10%)

**Booking discounts**

Payment lumpsum in advance.

3 insertions - less 10%

6 insertions - less 15%

(other payment and discount options are available)

**Circulation**

Distributed free through outlets in the Agricultural Smallholding settlements of Gauteng and adjoining provinces.

**By Mail**

To receive the *Smallholder* by mail subscribe for only R210 per year. See coupon in this edition.

**Online Magazine**

www.sasmallholder.co.za

Also available on WhatsApp and email

**Free Online Classified Ads**

www.sasfox.co.za

**Copyright**

Title and contents protected by copyright. No part of this publication may be reproduced or stored in any form whatsoever without the prior written permission of the publisher.

**Disclaimer**

While every care is taken to ensure the accuracy of the information in this journal, neither the Editor nor the Publisher can be held responsible for damages or consequences of any errors or omissions. The Publisher does not stand warranty for the performance of any article or service mentioned in this journal, whether in an advertisement or elsewhere.

**FRONT COVER**

A windmill. Read about windmills in this edition.

## COMMENT, by Pete Bower

# An abomination



*The greatness of a nation and its moral progress can be judged by the way its animals are treated ~ Mahatma Gandhi.*

**T**wo events in the field of seaborne livestock transportation last month loomed large for animal rights activists, both in South Africa and internationally. First, after a protracted High Court battle, the NSPCA lost a bid to prevent a Kuwaiti livestock trader, a company named Al Mawashi, from loading sheep at East London aboard its 40-year-old ship named *Al Messilah*. To be fair, the judge granted permission for the loading of a smaller number ~ 65 000 ~ than Al Mawashi originally planned for, and made certain stipulations regarding pre-loading inspection of the vessel, and veterinary checks of the animals, but the shipment went ahead, and by the middle of last month the ship had reached the Persian Gulf port of Kuwait City to discharge her cargo. In temperatures of 42°C.

Meanwhile, further East off southern Japan, another livestock carrier, a relatively smaller converted container ship named *Gulf Livestock 1*, lost engine power during a cyclone, capsized and sank, taking with her 43 of her crew of 46. And nearly 6 000 head of cattle. She was bound from New Zealand to China. Why are these incidents important? Because they highlight the inherent risks to life, and the barbarity, of this trade.

The inherent risks to life are a result of the average ages of the ships, and thus their overall reliability. Very few livestock carriers are purpose-built from scratch. The vast majority have already had a career as, predominantly, container ships or small tankers, and are converted by having animal-handling ramps, multiple decks with pens, watering and feeding systems, forced air cooling, additional crew quarters, and carcass disposal units fitted.

This is the cheap and cheerful end of the shipping industry, and minor matters such as ship stability, engine reliability etc are often dismissed by owners keen to make a buck. Also, there is little romance in being aboard a livestock carrier as a crew member, surrounded by stench, and death. As a result, the crew who sign up on such ships are invariably from the dregs of the merchant marine who either have no idea of animal welfare or simply don't care.

And the practice is barbaric.

The animals are trucked or railed to the harbour, corralled on the quayside and driven up the ramps into the ships, being "encouraged" by cattle prods and whips.

Once securely penned on one of the multiple decks, those unlucky enough to have been loaded first, and thus on one of the lower decks, will not see the sunlight until they reach their destination.

Water and food is provided, on the more sophisticated vessels by automatic conveyors and drinkers. Bedding is not provided, the animals standing on metal grates for the voyage. Handlers will periodically hose the pens down to remove droppings and urine. Now anybody who has been to sea will know that a ship is in constant motion while underway, swaying from side to side and, depending on the state of the weather, pitching up and down. In humans it results in seasickness, and the cure is to fix one's eyes on the horizon, which seems to settle one's brain. Sheep and cattle don't know this and besides, those in the bowels of the ship don't have a view. As a result, some will slip, injure themselves, and even die (the death rate on livestock carriers can be as high as 20% of the total cargo).

Periodically, therefore, handlers will remove the carcasses from the pens, drag them to the rear of the ship and drop them into a gigantic mincing machine which empties out into the ship's wake, along with the faeces and urine laden wash water from the pen cleaning.

Upon arrival at destination, two or three weeks after loading, the remaining animals, weakened and considerably thinner than when they were loaded, are herded off the ships, into quayside pens, and loaded aboard trucks or railway wagons, to be transported, in due course, to a slaughterhouse or sold for ritual slaughter. No living out their days recovering from their ordeal in a cool and green pasture.

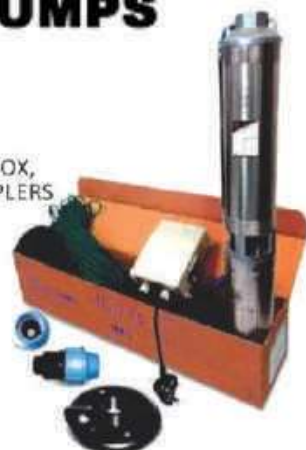
There is a better way. Slaughter the animals before loading, chill the carcasses until deep frozen, pack them into refrigerated containers and send them off. No loss of condition on the voyage, and no cargo loss through injury, sickness or death.

It behoves every person with any inkling of animal welfare in their bones to stand up against this barbaric trade, and lobby the Dept of Agriculture, farmers unions and anybody else involved, to put a blanket stop to seaborne live animal exports. Let us as South Africans demonstrate our humanity towards animals to the world.



## CRI C.R.I. PUMPS

**CRI 4" MAXI KIT**  
INCLUDES: MOTOR, PUMP, CONTROL BOX, CABLE, ROPE, BASEPLATE & TWO COUPLERS  
0.37kW + 60M CABLE MK-1 **R3 799**  
0.37kW + 50M CABLE MK-2 **R3 799**  
0.55kW + 60M CABLE MK-3 **R4 099**  
0.75kW + 70M CABLE MK-4 **R4 999**  
1.10kW + 70M CABLE MK-5 **R5 999**



**VARIABLE SPEED DRIVE PUMP**  
I PREZ-07N  
MAX 6 000 L/H  
MAX 38 METRES  
0.75kW **R5 999**



**PEM-3N-QF**  
MAX 1 600L/H  
MAX 40M  
0.37kW **R1 249**



**PEM-3N**  
MAX 1 600L/H  
MAX 40M  
0.37kW **R699**



**AUTOMATIC SUBMERSIBLE PRESSURE PUMPS**  
ADL-9L3-08/AS  
MAX 6 000 L/H  
MAX 35 METRES  
0.85kW - **R2 799**  
ADL-9L4-10/AS  
MAX 6 000 L/H  
MAX 45 METRES  
1.1kW - **R2 999**



**PUMP SET JTS-3/05M**  
MAX 4 000 L/H  
MAX 38 METRES  
0.55kW **R1 899**

**PUMP SET JTS-3/07M**  
MAX 4 000 L/H  
MAX 40 METRES  
0.75kW **R1 999**



## DAB WATER TECHNOLOGY

**DIVERTRON 1200M**  
MAX 5 400 L/H  
MAX 46 METRES  
0.75kW **R4 826**



**E.SYBOX**  
MAX 7 200 L/H  
MAX 65 METRES  
1.1kW **R15 036**



**E.SYBOX MINI**  
MAX 4 800 L/H  
MAX 55 METRES  
0.75kW **R8 996**



**JETINOX 102M**  
MAX 3 600 L/H  
MAX 53 METRES  
0.75kW **R2 749**

**KPF 30/16M**  
MAX 2 100 L/H  
MAX 32 METRES  
0.37kW **R999**



**JETCOM 82M AUTO**  
MAX 3 600 L/H  
MAX 47 METRES  
0.60kW **R3 317**

## Aqua-Win Pure Water System



**10" FILTER SET 3 PIECE**  
**R119**



**10" REVERSE OSMOSIS SYSTEM**  
5-STAGE WITHOUT PUMP  
**R2 449**

## RAIN BIRD

**3500 POP-UP**  
RADIUS 4.6 - 10.7M  
**R199-99**



**5000 POP-UP**  
RADIUS 7.6 - 15.2M  
**R209-99**



**UNISPRAY POP-UP WITH NOZZLE**  
RADIUS 2.4 - 5.5M  
**R49-99**



**HV VALVE**  
25MM, 24V  
**R249-99**



**COMPLETE 1M MICRO SPRINKLERS**  
INCLUDES: 1 x MICRO SPRINKLER, 2 x ADAPTORS, 1 x TUBE & ALUMINIUM PEG  
5 TYPES AVAILABLE - **R13.99**



**eco**  
VERTICAL WATER TANKS

1 890 LITRES - **R2 099**  
2 200 LITRES - **R2 399**  
2 500 LITRES - **R2 599**  
5 000 LITRES - **R4 599**  
10 000 LITRES - **R12 199**

## AZUD

**AZUD MODULAR 100 FILTERS 130 MICRON**



**SCREEN FILTERS**

**DISC FILTERS**

20-25MM - **R121**

20-25MM - **R155**

32-40MM - **R199**

32-40MM - **R327**

50MM - **R364**

50MM - **R485**



## AZUD SPRINT

**AZUD SPRINT DRIPLINE**  
16MM X 0.3MM X 1L/H  
3 000 M COIL - **R3 299**

## AZUD SEDAN

**AZUD SEDAN DRIP LINE**  
16MM X 0.63MM X 2L/H X 0.3M  
800M COIL - **R2 399**  
16MM X 0.63MM X 2L/H X 0.6M  
800M COIL - **R1 899**

## Franklin Electric

**AQUADUTY 4AQD 100S SET**  
MAX 6 000L/H  
MAX 43M  
0.92kW **R2 599**



**AQUADUTY 4AQD 170M SET**  
MAX 8 400L/H  
MAX 36M  
1.1kW **R3 299**



**AQUADUTY 4AQD 158M SET**  
MAX 6 000L/H  
MAX 32M  
0.75kW **R2 199**



**AQUADUTY 4AQD 60M SET**  
MAX 2 400L/H  
MAX 37M  
0.37kW **R1 299**



## AQUADUTY

INCLUDES: MOTOR, PUMP, CONTROL BOX, CABLE, ROPE, BASEPLATE & 2 COUPLERS

0.37kW AD1/13 + 50M CABLE **R5 799**  
0.37kW AD2/07 + 50M CABLE **R6 099**  
0.55kW AD2/10 + 50M CABLE **R5 999**  
0.75kW AD2/14 + 50M CABLE **R6 399**  
1.10kW AD3/15 + 50M CABLE **R6 599**



## Conforto Water Pumps

**STM 3**  
MAX 6 000 L/H  
MAX 31 METRES  
0.75kW **R2 749**







# LANDMARK & VOERE

010 4420 912 | [www.grfeeds.co.za](http://www.grfeeds.co.za) | 2 Albert str. Heidelberg  
[orders@grfeeds.co.za](mailto:orders@grfeeds.co.za) | [grfeeds.co.za](http://grfeeds.co.za)

All prices include vat, unless otherwise specified. Prices valid while stock lasts. Contractor's price list available on request.

## GARDENING

### FERTILIZER & COMPOST

LAN 10kg R119.99  
Superphosphate 5kg R93.50  
Organic 2:3:2 10kg R119.50  
Organic 8:1:5 10kg R102.00  
Compost 30dm R25.99  
Compost 60dm R41.60  
Potting Soil 30dm R29.99  
Bone Meal 5kg R59.99

LDPE & HDPE pipe available.  
15mm - 50mm  
Also sold per meter.  
Complete range full flow and nylon fittings in stock.

### OUR SELECTION OF HOSEPIPES WILL FIT EVERY POCKET!

Entry Level Hose 12 x 20mm R149.99  
Entry Level Hose 20 x 20mm R299.99  
6 YEAR LIFE DESIGN HOSEPIPE  
12x20mm R187.00  
20x30mm R514.00  
20x20mm R369.00

Dragline Hose + fittings 12mm x 25m @ R239.99

### Swimming Pool Maintenance

#### Swimming Pool Pump

800W @ R1999.99

#### Swimming Pool Pump

1100W @ R2199.99



Blu52  
75 000L Big  
Pool 1.7kg  
@ R289.99

Blu52 Easy  
Test Strips  
@ R139.99

MUCH MORE AVAILABLE, VISIT US IN STORE TO BROWSE OUR RANGE.

ORBIT POP-UP GEAR SPRINKLER VOYAGER BULK R199.99  
ORBIT POP-UP ADJUST SPRINKLER 3.5M 2" R74.99  
ORBIT POP-UP IMPACT SPRINKLER SATELLITE R299.99  
ORBIT POP-UP GEAR SPRINKLER SATURN BULK R179.99



SPRINKLER  
OSCILLATING 17 HOLE  
LUX



CUTTING TOOL SET  
3PC

WE HAVE STOCKED UP ON  
IRRIGATION FITTINGS, NEW  
RANGE OF GRO BRASS  
FITTINGS IN STOCK

## PETS

### OCTOBER SPECIAL

### PRICE FREEZE!

Montego Karoo Adult 20kg @ R617.99  
Monty & Me Adult Dog 25kg @ R384.99  
Monty & Me Adult Cat 5kg @ R139.99



Our prices will remain the same on the entire Montego range for October.

### WE STOCK BARENBRUG SEED

Moorivier Mix  
Oulands Seed  
Teff Seed



### BIG SAVER!

JOCK  
MULTISTAGE  
20KG  
R349.99



### POLTEK DRINKERS AND FEEDERS IN STOCK

Water Fountain 3L @ R49.99  
Water Fountain 10L @ R159.99  
Bulk Chick Feeder @ R74.99  
Automatic Econo Drinker @ R259.99

### BROILER FEED

Prices exclude vat.  
Broiler Starter Crumbs 50Kg @ R283.63  
Broiler Grower Pellets 50kg @ R277.98  
Broiler Finisher Pellets 50kg @ R272.33  
DAY OLD BROILER CHICKS @ R925.00 PER 100.



We also stock Epol  
Suregro broiler range  
in 50kg bags.



### IVOMEC HERD PACK PROMO



Ivomec 1% 2 x 1L @ R1327.50  
Ivomec Super 2 x 1L @ R2853.00  
Ivomec Gold 2 x 1L @ R3600.00  
Prices exclude vat.

### VARIETY OF FLY SPRAY IN STOCK

incl. Tabard, Buzz Off, Shoo

Fly, Equifox & Equiline.

Quadrepel 5L @ R899.99

QUANTITY DISCOUNT AVAILABLE



Fly Masks in

stock @ R99.99.

Buy 10 or more and

get 10% discount



# LANDMARK & VOERE

010 4420 912 | [www.grfeeds.co.za](http://www.grfeeds.co.za) | 2 Albert str. Heidelberg  
[orders@grfeeds.co.za](mailto:orders@grfeeds.co.za) | [grfeeds.co.za](http://grfeeds.co.za)

All prices include vat, unless otherwise specified. Prices valid while stock lasts. Contractor's price list available on request.

## ENGINEERING & PPE



GUMBOOTS PULL-ON  
FROM R215.00



LADIES KNEE HIGH  
GUMBOOTS FROM  
R94.99



MENS KNEE  
HIGH  
GUMBOOTS  
FROM R99.99



BATA SABRE SAFETY  
BOOT LACE-UP  
454.99



BATA SABRE  
CHELSEA  
SAFETY BOOT  
R459.99



BATA SAFARI  
CHELSEA MENS BOOT  
BLACK @ R399.99



BATA SAFARI LEGACY  
BOOT BLUE SOLE MENS  
FROM R469.99



BATA SAFARI LEGACY  
BOOT GREY SOLE  
FROM R459.99



BATA SAFARI LEGACY  
BOOT PINK SOLE LADIES  
FROM R469.99



BATA INFANT  
BOOTS IN STOCK



GLOVES RED NYLON  
SHELL, BLACK NITRILE,  
SMOOTH PALM COAT @  
R15.99



DENIM OVERALLS  
ON PROMOTION  
@ R249.99



RAIN SUITS  
IN STOCK  
@ R124.99

ALSO AVAILABLE: HARD HATS,  
BARRIER TAPE, REFLECTIVE VESTS,  
APRONS, SAFETY GOGGLES &  
SAFETY SHOES, WELDING GLOVES,  
COTTON GLOVES AND MUCH MORE!



FLASH HARRY  
WATERPROOFING  
RANGE AVAILABLE.



DRIP STOP 5L  
@ R179.99



FIBRE FLEX  
(MEMBRANE  
FREE) 5L R284.99



DAMP SEAL 5L  
@ R314.99



WELDING  
HELMET AUTO  
DARKENING  
R249.99



Mild Steel Welding  
Rods Pinnacle  
SUPER 7 from  
R35.99. Available in  
1kg and 5kg in  
2.5mm and 3.2mm.



Mild Steel Welding  
Rods S Pro Premium  
Green Coating @  
R239.99. Available in  
2.5mm & 3.2mm, 5kg  
pack size.

### FULL RANGE NOW AVAILABLE

Rockworth Cutting Disc - R8.99  
115 x 1mm  
Rockworth Cutting Disc - R27.99  
230 x 2mm  
Flap Disc Zirconia Oxide - R21.30  
115mm Rockworth P60



### INGCO CORDLESS POWERTOOLS IN STOCK

CORDLESS DRILL KIT 45NM 2  
BATTERIES & 20V PS INGCO



R2149.99

NEW PRODUCT LAUNCH:  
115MM CORDLESS  
GRINDER INGCO.



NEW!

CORDLESS LIGHT  
1500LUM + 20V  
PS INGCO



R799.99

IMPACT DRILL 550W HIKOKI  
13MM CHUCK



R984.99



**Husqvarna** **I GRANT ST NEW STATE AREAS SPRINGS** **MULTI**  
 TEL: 011 817-3044/84  
 082 444-8952  
 FAX: 011 817-3063  
**VISA** **MULTI FIRE & POWER**  
 www.mfpafrica.com  
 multifireandpower@gmail.com  
**Best product advice, sales and service**  
**HONDA**  
 Mowers  
 Brushcutters  
 Water Pumps  
 HP Washers  
 Cultivators  
 ...and... GENERATORS  
**Visit us for all your summer machinery needs!**

**Dam Linings & Tarps**

Reservoir Linings Mesh Dams Chicken Run Curtains  
 Earth Dam Linings feedcovers Truck Tarps

**TATA MA TARPS & LININGS**  
**072 279 3294**  
 www.tatamatarps.co.za

**Reliable, quality equestrian services**

**Rohan EQUESTRIAN**  
**Francois**  
**084 519 0056**  
 manvanstaal@gmail.com

- Stable doors, windows & dividers
- Tack room security doors, windows & ceilings
- Fencing (paddocks, arenas, perimeter)
- Painting
- Maintenance & repairs (wood & steel)

**Your Perfect Water Solution**  
*Water is Precious ~ We Deliver!*

**We offer:**  
 - Full Water Survey  
 - Depth & Flow  
 - Drilling  
 - Pumps  
 - Irrigation

**We also do borehole cleaning!**

**Call us today!**  
**081 421 7928**  
 info@waterdowser.co.za  
 www.perfectborehole.co.za

**PERFECT BOREHOLE**

**STEWARTS & LLOYDS**

5000L vertical tank + free 250L horizontal tank @ R4800 EXCL  
 COLLECTION ONLY



3st module  
R380 EXCL



6st module  
R690 EXCL



Rainbird ESP4ME controller  
@ R1450.00 EXCL



Rainbird valve box @  
R33.00 EXCL

Prices valid for October 2020



4 Brahman Crescent, Longmeadow Business Park,  
 Edenvale, Gauteng  
 Phone: 011 608 0155  
 Email: irrigation@sltrading.co.za  
 www.stewartsandlloyds.co.za



## What's happened to Walkerville?

**S**ir ~ This week I dusted off my July 2014 copy of the Gauteng Smallholder. This after an almost violent confrontation with the "chainsaw cretins"

on my plot. At the end of my rereading Mr Colin McGuiness' letter on page 5, I ask: Have you visited the Walkerville areas lately? Now I regret buying a plot in this

area. This is the wild south. Criminals. Lacadazical Police. Chair-warming councillors (Lockdown mafias). Criminals. Land invaders. Scrap mongers. Then there's Eishkom.

Where to from here? Will we ever (again) see the beautiful beguiling Walkerville in this lifetime?  
J Mazibuko  
By email

## Telling both sides of the story

**N**ice to hear stories that are real. This magazine tends to do that just right ~ you hear both sides of the story in farming, not only the good, but also the short comings. I recall a certain edition where the editor talked about

shortcomings of starting a smallholding, where he said it's like just pouring money into an endless pit where you won't see it again. I realised that this is very real but having someone who knew it and wrote about it gives such hope that one is not alone in the game. Thank you guys for such a wonderful magazine.  
Comment on Facebook

## Nampo Virtual a success

**F**or the first time in its six-decade-long history, Grain SA's annual Nampo Harvest Day was not held in a field outside Bothaville, but rather online as Nampo Virtual. For four days last month, visitors were allowed, at their leisure, to browse various stands, watch

talks and attend discussions ... all from the comfort of their homes and offices. While the event did not offer the once-yearly face-to-face catch-ups, tyre-kicking and

Continued on next page

**BREDELL GAS & HARDWARE**  
**Hardware HOT SUMMER Dry cleaning GAS**  
**OPEN ON SUNDAYS 09:00-12:00**  
Bredell Shopping Centre  
3rd Ave, Bredell Tel 011 396-1662

The Editor welcomes your letters, comments and opinions, but reserves the right to edit and shorten as necessary. Senders' names and addresses must be included. Afrikaans letters will be translated. Send your letters to: gautengsmallholder@gmail.com, SMS or WhatsApp 076 176 7392.



**HIGHVELD HONEY FARMS**  
**PROTECT OUR BEES**  
Visit our farm in Rynfield to get your honey at farm prices. Bring your own containers and we will fill them up - pay ONLY for the HONEY  
Plot 185 Uys St, Rynfield AH, Benoni  
Tel 011 849-1990  
Weekdays 07:00-17:00  
Saturdays: 07:00-13:00

TEL: 011 822 8503  
011 964 1323  
FAX: 086 630 2616  
sales@gas2u.co.za  
www.gas2u.co.za



S26°0.180 E28°24.807  
14 Magic Avenue  
Bapsfontein  
(near BP Garage)



**Nova Toilet Paper**  
18s (2 Ply) - ~~R85-00~~  
24s (2 Ply) - ~~R116-00~~  
48s (1 ply) - ~~R169-00~~



**Pine Gel Disinfectant**  
**NOW ONLY R79-90**  
FOR 5kg

**40W Solar Floodlight**  
incl Panel & Remote  
WAS R904-95  
**NOW ONLY 699-00**



**Walk-in only**

## LP GAS

3kg - ~~R57-95~~  
4.5kg - ~~R86-90~~  
5kg - ~~R96-55~~  
7kg - ~~R135-20~~  
9kg - ~~R173-80~~  
19kg - ~~R366-90~~  
48kg - ~~R926-90~~



**Refurbished 9kg cylinder with gas**  
**NOW ONLY R699-00**

**Six-burner Zero Appliances Full Gas Stove**  
- Stainless Steel -  
**NOW ONLY R6 499-00**



All prices valid for October 2020 & include VAT. Terms & Conditions Apply





# WATER IS OUR BUSINESS

We carry the widest range of pumps and fittings for all your requirements

- Borehole Testing & Certificates
- Dewatering of Dams & Pools
- Installations of Borehole pumps & Garden Irrigation  
(Phone for Quotation)
- We now stock Solar Pumps, VSD Drives, Water Tanks and Water Harvesting

*Pumps for hire*

Borehole testing up to 100 000l per hour. Borehole inspections can be done with latest camera technology.



**011 660 7824**  
TECHNOLOGIES  
**manti**

mark@amantitech.co.za  
www.amanti.co.za

Visit our brand new website:

67 Commissioner street, Krugersdorp  
(opposite Action Ford)

GPS 26°06'07"S, 27°46'20"E

Consultations on ALL your water problems

**Tired of flies?**  
**Get your iCatchi flycatcher today!**

Attracts various fly species  
Free from unpleasant odour

For domestic, farm and equestrian use

**ONLY R199,00**

Complete with 1 sachet powerful bait



1 litre mixing bottle and extra bait also available



**LAWN MOWER & POOL**

Tel: 011 811 5067  
Fax: 011 811 6364  
086 274 2071  
info@lawnandpool.co.za

Cnr. 3rd St & 9th Ave  
Geduld, Springs

**SEPTIC TANK  
PUMPING**



**0861 11 33 24**

**WE TAKE YOUR SHIT!**



# Take your veg to market

Vegetable-growing smallholders need no longer be left out of the commercial market. René Horn, a market agent at the Johannesburg Fresh Produce Market is encouraging smallholders and small farmers to grow with the view to receiving assistance sell their crops.

With almost 13 years' experience at the market, working her way up from desk clerk to agent, Horn has gained knowledge that she is now applying to assist small farmers. She suggests that small farmers who wish to

grow for sale at the market contact her to establish a relationship. With her knowledge of seasons, market influences and market fluctuations, she will be able to advise growers on what sells best, what is in demand, when and why. On that advice, smallholders can plan a vegetable crop that will be in high demand for sale at the exact time of harvest.

"A lot of agents will encourage farmers to bring their produce, not necessarily taking into account what is already at market or what is in demand, so produce is

then destroyed when it doesn't sell. With my knowledge and hands-on approach, I will be able to directly advise the grower that certain crops do better at certain times," she explains. She used the example of a particular day in September when a number of growers contacted her requesting sale of spinach. She was able to tell them that the market was full of spinach on that day, which had driven the price down so they would make more money selling the product directly to small shops or vendors. "At R3 a



René Horn.

bundle, that wouldn't even cover their transport." Because of this risk of waste, Horn says, "Vegetables with a longer shelf life will be ideal." She says pumpkins, gem

Continued on next page

## NAMPO

From previous page

chewing the fat amongst the country's agricultural community, it did allow suppliers to showcase their new products, services and technologies to potential buyers. With more than 36 000 visitors over the three days, the virtual experience allowed 93 exhibitors the chance to connect ~ albeit virtually ~ with their customers, and to continue that relationship after the event was over.

The virtual stands appeared uniform in their offerings with links to videos, product catalogues and contact details, among other things. They also allowed exhibitors and visitors to interact via a chat function, manned throughout the day by staff, who themselves may have been working from home. With a number of talks, panel discussions and webcasts planned over the four days,

visitors had to take the same care in planning their experience as they would the "normal" Nampo, mapping out their day in accordance with the schedules of talks and events.

One huge plus for this format is that exhibitors and

exhibitions remained active for a week after the event had ended, allowing visitors to continue to browse stands long after the close of the show. Also, the talks and discussions are still available for viewing on YouTube. 🌱

### FREE RANGE CHICKS



### POTCH KOEKOEKS

Quality chicks available

"Best all-round dual purpose breed"

WE ALSO HAVE

Boschvelders, Australorps & Rhode Island Reds

Northern PTA & Cullinan 082 324 5835



### ORGANIC COMPOST & LAWN DRESSING

CONTACT SALES@POLYORGANICS.CO.ZA OR 076 300 9673

WWW.POLYORGANICS.CO.ZA

### RANDVAAL

TREKKERS & IMPLEMENTE



016 001 0633

www.randvaaltrekkers.co.za

Next to the R59, Meyerton

FOR ALL YOUR TRACTOR, IMPLEMENT AND SPARES NEEDS!

CHECK OUT THESE MONTHLY SPECIALS ON TRACTORS, IMPLEMENTS AND PARTS



1977 M-F 135  
WITH TURF TYRES  
R85 000 + VAT



2014 M-F 240 DEMO  
MODEL, ONLY 10 HRS,  
R160 000 + VAT



1978 FORD 4600 40Kw 4x4  
VERY GOOD CONDITION  
R120 000 + VAT



RADIATORS



GRILLES



CLUTCH KITS

WE STOCK:



...and more!





**Pomona Branch**  
**011 396 3648**  
**46 Pomona Road**  
**Pomona, Kempton Park**

**Pretoria Branch**  
**012 819 1506**  
**178 Seekoeiweg**  
**Roodeplaat**

**[www.airportpets.co.za](http://www.airportpets.co.za)**

**charlfouche@gmail.com**

**YOUR ONE-STOP  
 PET HYPER**

**COMPLETE  
 ADULT  
 MAINTENANCE  
 25KG**

**NOW ONLY...  
 R349**



**RED MANNA  
 50kg**

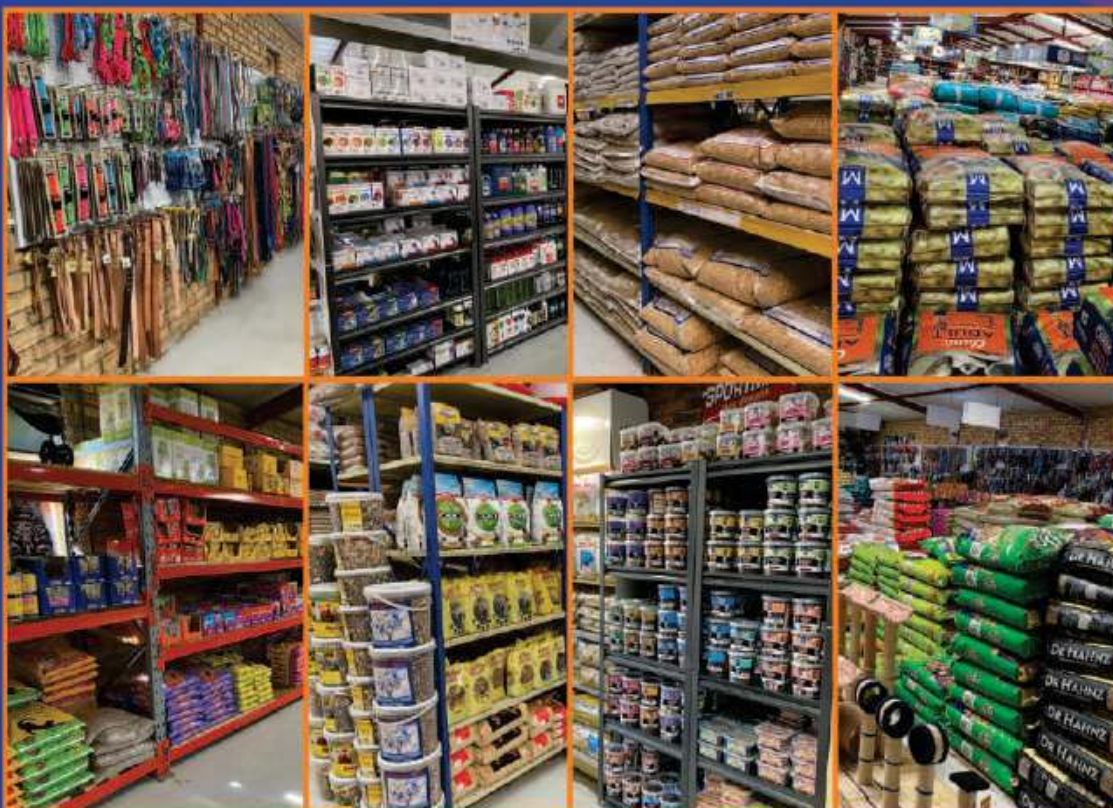


**NOW ONLY...  
 R449**

**SPECIALS VALID WHILE STOCKS LAST**

**VISIT US FOR THE WIDEST RANGE OF FEED,  
 PHARMACEUTICALS, TOYS, BEDDING & ACCESSORIES  
 FOR ALL YOUR PETS, BIRDS & FISH**

**ALSO!**



**KEEP YOUR POOL  
 CLEAN WITH OUR  
 RANGE OF  
 CHEMICALS,  
 PUMPS &  
 ACCESSORIES!**

**WE STOCK  
 EVERYTHING YOU  
 NEED TO KEEP  
 YOUR HORSE  
 HAPPY!**



## Get your honey & mead ready for annual competition

Entries are now open for the South African Bee Industry Organisation's (Sabio) honey and mead competition. Sabio's annual Beecon 2020 is due to take

place in late-November in Johannesburg. The Honey Judges Guild of South Africa will be judging entries at Beecon. Categories to enter include

light, medium and dark liquid honeys; granulated honeys; frames and bees wax blocks; various types of meads including dry, sweet and semi-sweet. Entry forms can

be found on the Honey Judges Guild – South Africa Facebook page and have also been distributed via the country's beekeeping associations. 🌿

## MARKET

From previous page

squash and butternut are good examples. From the growers' point of view, they will contact Horn and tell her they have a crop of gem squash, for example, ready for harvest. Horn will be able to gauge whether this crop will do well and advise the grower on the standard method of packaging. This may be in cardboard boxes, sugar pockets and so on. Horn will advise what quantity to package in each box or bag. "There are suppliers at the market where

growers can buy packaging, some new and some used. If the box is used, the grower will just need to modify it to their specifications. This also means that they have the chance to develop their own brand recognition, and seeing their name alongside major commercial farmers will make them proud." A grower can bank on taking home about 88.5% of their sale earnings, net of market and agent's commission. Transport cost to the market is for

the producer's own account. For smallholders who already grow vegetables for their families and staff, it is not a huge leap to add some square meterage to their existing vegetable garden for the growing of products destined for market. Using Horn's advice, planting particular crops at the right time with the knowledge that by the time they are ready for harvest it will be an in-demand vegetable,

smallholders can use their existing space and skills to earn a living, become self-sustainable and create jobs. Horn works predominantly in the vegetable section, but she says, "I have contacts in the fruit, potatoes and onion sections so I will be able to facilitate between the grower and those sections if required." For more information call René Horn on 072 466 8689 or email [rene.citveg@gmail.com](mailto:rene.citveg@gmail.com). 🌿

**GET YOUR SMALLHOLDER MAGAZINE ON WHATSAPP**

Save 076 176 7392 on your phone  
Send a WhatsApp message to that number with your name and the words "WhatsApp subscription"

We'll send a PDF of the magazine straight to your phone, every month, for free! **With clickable links!**

**Chicken Coops**

We also construct Hangers and Storages  
from 12m to 40m wide, any length COUNTRYWIDE

[www.amatsprojects.co.za](http://www.amatsprojects.co.za)

Theo 079 387 3525 (theo@amatsprojects.co.za) TradeSAFE Zaida 072 432 4563 (zaida@amatsprojects.co.za)

**AMATS PROJECTS**

**A.R.M.S. AIR RIFLE MEGA STORE**

\* widest range of air rifles \* air cylinder refills up to 300bar  
\* discovery optics & thermal scopes \* pellets  
\* accessories

**NOW AVAILABLE:**  
In-store financing on goods purchased from R2 000 – R80 000  
T & C's Apply.

**NEW: Duke Defence**  
Early warning Trip-wire defence system  
Available as Sonic or Pepper Spray Grenades

**ALSO IN STOCK:**  
Large selection of Knives, Paintball & Airsoft Rifles

**Indoor & outdoor shooting range**

**Stockists of:**  
Rifle Scopes & Home Self-defence Revolvers (.50 calibre) & Shotguns (.68 calibre)

Edward Punter: 076 133 1940 [www.airriflestore.co.za](http://www.airriflestore.co.za)  
Derek Erntzen: 067 173 9282 [airriflestore@gmail.com](mailto:airriflestore@gmail.com)  
81 Pomona Road, Pomona, Kempton Park

Trading hours:  
Mon-Fri: 8:30m-5pm Sat & Sun: 8:30am-1pm

**Borehole Water Solutions**  
084 538 4600

SABS 10299 Standards

Quality service throughout Gauteng!

- Borehole Yield Testing and Certificates
- Borehole water quality testing
- Supply, install and repair borehole pumps and motors
- Borehole equipment automation, control and security systems
- Storage tanks, pressure pumps, transfer pumps, irrigation systems

**084 538 4600**  
Visit our website for prices  
**[www.bws-sa.co.za](http://www.bws-sa.co.za)**  
Follow us on Facebook





**Hurricane Pumps Centurion**  
184 Boundary Road  
Mnandi, Centurion

**NOW OPEN**

### 4" Combo Sets, Including Pump, Motor, Std Controller, Joining kit, 60m Sub Cable + 60m Rope



4SD2/9 Combo 0.37KW 220V Kit + 60m 1.5mm 2000L/Hour @ 40m - R2,916.00 excl. V.A.T

4SD2/12 Combo 0.55KW 220V Kit + 60m 1.5mm 1800L/Hour @ 68m - R3,111.00 excl. V.A.T

4SD2/15 Combo 0.75KW 220V Kit + 100m 2.5mm 2000L/Hour @ 80m - R4,100.00 excl. V.A.T

### Solar Panels

PLK-270P-60 270W Solar Panel @ R1,700.00 excl. V.A.T each



PLK-330P-72 330W Solar Panel @ R2,000.00 excl. V.A.T each

### 6" Pumps & Motors



6SP30-10 9.2KW Pump & 380V Motor 24,000L/H @ 110m R11,265.00 excl. V.A.T

6SP30-12 13KW Pump & 380V Motor 30,000L/H @ 110m R12,695.00 excl. V.A.T

6SP60-10 22KW Pump & 380V Motor 42,000L/H @ 103m R16,689.00 excl. V.A.T

### Accessories, Cable, Pipe, Tape, Fittings, Base Plates, Cable Joint Kits & More.



### Water Purification Systems and Filters



### Irrigation equipment & accessories

### V750F Submersible pump

The Hurricane V750F submersible pump is a 220V 0.75KW clear water pump

R2,200.00 excl. V.A.T



### 4" Pumps, Motors and Control Boxes

4SD2/9 0.37KW 220V Pump, Motor and Control Box 2000L/Hour @ 40m - R2,170.00 excl. V.A.T

4SD2/12 0.55KW 220V Pump, Motor and Control Box 1800L/Hour @ 68m - R2,365.00 excl. V.A.T

4SD2/15 0.75KW 220V Pump, Motor and Control Box 2000L/Hour @ 80m - R2,565.00 excl. V.A.T



**Also available in 380V**

### Submersible Solar Pump Kits



HSP24/120 (24V/120W) 400L/H @ 36m R7,900.00 excl. V.A.T

HSP36/210 (36V/210W) 400L/H @ 56m R8,300.00 excl. V.A.T

HSP48/500 (48V/500W) 800L/H @ 70m R9,200.00 excl. V.A.T



Q860 Pressure Pump R690.00 excl. V.A.T 1200L/Hour 0.37KW

JSW10M Centrifugal Pump 0.75KW 3000L/Hour R1,300.00 excl.

JSW15M Centrifugal Pump 1.1KW 4200L/Hour R1,680.00 excl. V.A.T

Auto Switches R490.00 excl.



2500L Green Tank R2,359.00 excl. V.A.T

5000L Green Tank R4,205.00 excl. V.A.T

**Tanks also available in tan**

**Hurricane Pumps Centurion**  
184 Boundary Road  
Mnandi, Centurion

Co-ordinates : S25° 53' 53.7" - E028° 03' 45.2"  
Alywn : 082 310 1541 or 010 597 7843

**Hurricane Pumps Polokwane**  
86 Oost Street  
Polokwane, Limpopo  
Rae : 079 892 2782 or 015 297 2444



**www-hurricanepumps-co-za**



## Need water? Try a windmill

There is a commonly-held view that Gauteng is not a windy-enough province to justify the installation of a windmill as a means of extracting water from a borehole. Happily, for those who wish to install these ultimate-in-eco-friendly devices, that's not quite true. For, although it may appear to be totally windless at ground level, only a few metres up the air is constantly moving. And the higher you go the more the movement. Moreover, the movement at even relatively low heights is enhanced by certain topographical features, such as hillsides, gullies and the like. So, if you are seeking to equip a borehole, and are considering an ecologically-friendly and sustainable solution you have two choices: install a solar pump and photovoltaic panels, or install a windmill. Both have advantages and disadvantages. While less visually intrusive, the solar set-up will only run when receiving power from the panels, ie during daylight (and in sunlight for best efficiency). The windmill, by comparison, will turn (and pump) day and night, so long as there is movement in the air. The solar system, while less obtrusive on the eye than the windmill, is eminently thievable, with the array of panels announcing the presence of the pump, and its associated cable, down

the hole nearby ~ unless you install the panels some distance from the pump, thereby incurring additional cabling and trenching costs. The windmill has no valuable copper cabling and expensive pump or electronics to steal. It comprises a stand made of angle iron and piping, with the business end of angle iron and sheet metal suspended some metres up in the air,

thus difficult to get to, and difficult to steal. The windmill is a time-tested piece of engineering which will give years of service if installed correctly and periodically maintained. Everybody is familiar with the look of a windmill ~ the circular wheel spinning round, and always held pointing flat on to the wind for maximum



efficiency by the flat vane sticking out behind.

Continued on next page

# RotoTank™

**Manufacturers of Water, Chemical, Transport, Septic Tanks and Silos**  
[www.rototank.co.za](http://www.rototank.co.za)

**North West Sales**  
 Plot 198, Cor R511&  
 R513, Zilkaatsnek  
 Hartbeespoort  
 078 296 2096

**Head Office**  
 Pretoria West  
 012 376 1070/2  
 071 683 4507

**East Rand Sales**  
 163 Annabelle St,  
 Bardene,  
 Boksburg North  
 066 485 4366

**Silo tanks from 175€ to 27 000€**

**Water tanks from 300€ to 40 000€**

*Free Leaf-catcher with each Water Tank sold!*

**Septic tanks from 300€ to 12 500€ (2-55 persons)**

**Transport tanks from 220€ to 8 000€**

**DESIGNED TO LAST!**

**Free delivery!**

**WARRANTY**

**WIN with RotoTank!!**  
**An ALL EXPENSES PAID trip for TWO to Sunny MAURITIUS worth R80 000!**

Visit your nearest RotoTank branch to enter.  
 Ts & Cs apply  
 Competition runs from 1 January 2020

**Snake Catcher**  
 Protect Family, Guests, Pets, Livestock

ONLY R1 995.00 & **FREE** POSTAGE  
 Call or SMS Ralph: 082 573 0710  
 Or email: [SnakeAlert@Global.co.za](mailto:SnakeAlert@Global.co.za)





**RED RHINO**  
PRODUCTS

# Landscaping Collection Depot

011 668 1923/4 - Plot 82 on R114 road Krugersdorp, 1739

## Petrol Blower REB430

- Engine Power: 1.25kW
- 43cc



**R2999**

## Knapsack Power Sprayer SPS-768

- Tank Capacity: 25L



**R3999**

## Mistduster MD 3WF-AY

- 43cc



**R3999**

## Petrol Water Pumps



RBP50  
• 50mm

**R3349**

RBP80  
• 80mm

**R3599**

## Earth Auger EAG52 Y

- Displacement: 52cc



**R4250**

## Petrol Shredder SS 1002

- Branch Diameter: 76mm
- 6.5Hp



**R13499**

## Petrol Generator (6.8KVA)

- RGG6500E
- Max KW Rating: 5.5kW
- Electric Start



**R8999**

## Lawnmower ZLFXSS51

- Cutting Width: 510mm
- 147cc



**R2999**

## Chainsaw POWXQG4060

- Cylinder Capacity: 37.2cc



**R1349**

## Brushcutter POWEG8012

- Cylinder Capacity: 42.7cc



**R2649**

## Drill & Angle Grinder Combo

- POWE10025 + POWE20010
- 600W Impact Drill
- 650 W Angle Grinder



**R949**

## Dragon 6000 Inverter Pump

- WD 6000
- Power: 55W
- Q Max: 6000L/h



**R2499**



**Buy Bulk and Save.**

**New commercial collection point for Atlantic Fertilisers.**

**KREATOR**



## Bio Ganic

Composted  
and pelletised  
chicken manure

40kg Bag



## Bio Rock

Added soft  
rock  
phosphate

40kg Bag



## Bio Ganic Crumble

For lawns in  
crumble form  
for easy  
application  
30kg bag



## Bio Ocean

Added  
fishmeal and  
kelp

40kg Bag



Price Incl VAT While stocks last



# IRRIGATION

From previous page

And here is the trick to windmill efficiency and long life. The weights of the wheel and the vane must be perfectly balanced, and the horizontal bearing on which they are mounted must be perfectly level, so that the entire device can swivel easily and freely as the direction of the wind changes. Doing the actual pumping is a



Windmills can come with different sizes of stands and wheels.

rotor which converts the spinning motion of the wheel to an up-and-down motion of the long vertical pump rod that extends down into the borehole.

As the blades of the wheel catch the wind it turns, which turns the rotor, which in turn moves the pump rod, up and down inside the pipe in the well. Submerged in water down the hole is a cylinder with a non-return valve at the bottom. A plunger attached to the pump rod going up and down inside forces the water up the pipe. The plunger is fitted with a seal which seals on the upstroke and opens on the downstroke. At the same time, each upstroke sucks water into the cylinder, while on the downstroke, the non-return valve in the bottom of the cylinder keeps the water from being pushed out, so the water is forced above the plunger and up the pipe with the next upstroke.

Eventually, after sufficient up-

and-down movements the top of the column of water emerges at the surface and can be piped off into a storage dam or irrigation furrow.

And here lies one of the disadvantages of a windmill, in that it is not a pressurised device. This means that while it can lift water out of the borehole, it can't lift it to a great height like an electric pump can. Thus, in order to move the water to a tank on

a stand, or into a pressurised domestic plumbing system or spray irrigation network, one would need to install a booster pump.

By contrast, a sufficiently-powerful solar borehole pump could raise the water to a sufficient height (aka head) to fill a tank on a stand. South Africans will be familiar with the sight of windmills on farms throughout the country, with two of the most famous

Continued on next page

## PA KRUGER WINDMILLS

SAVE MONEY, PROTECT THE ENVIRONMENT

• New Poldaw Windmills

2.2m to 5m diameter

• Windmill repairs

• Borehole pumps

We work countrywide!

Call Pieter

083 534 5728



## A-Frame house

Complete your house with our steel structure

STEEL STRUCTURE 210 sq m ERECTED

R277 500 vat excl.

Steel structure with 3 bedrooms and 2 bathrooms

ERECTED 8 TO 10 DAYS

STEEL STRUCTURE 101 sq m ERECTED

R162 500 vat excl.

Steel structure for 2 bedrooms, 1 bathroom and carport



STEEL FRAMES BUILDING WORK EXCLUDED

PIETER 082 497 4247 | info@aframe.co.za | www.aframe.co.za



## EXTRA ROOMS

- Temporary Accommodation
- Store Rooms
- Site Accommodation

- Colour chromadek roof sheeting



From R29 300 VAT incl Gauteng area



- Ceiling insulation • Wooden floor



3m x 3m x 2.7h  
3m x 4m x 2.7h  
3m x 6m x 2.7h

PIETER 082 497 4247 | info@aframe.co.za | www.aframe.co.za

## QUALITY TOOLS BRANCHES COUNTRYWIDE

## Adendorff machinery mart



R5595 incl vat

MULTI PURPOSE  
STANDING MEAT BAND  
SAW & GRINDER  
(NSAWMF-001)

50MM CLEAN WATER  
PUMP (MPUMPS-552)



R2995 incl vat

165 PIECE  
PROFESSIONAL  
TOOL KIT WITH  
METAL TOOL BOX  
(TT00LB-165)



R1295 incl vat



230MM PROFESSIONAL  
ANGLE GRINDER  
(2200WH/SGRIND-230)

R2995 incl vat



R2795 incl vat

PROFESSIONAL D.C MODEL  
200 AMP INVERTER ARC  
WELDER (JEWELDS-200)

www.adendorff.co.za

ALL PRICES INCL 15% VAT. PRICES VALID UNTIL 17 SEPTEMBER 2020, THEREAFTER SUBJECT TO CHANGE WITHOUT PRIOR NOTIFICATION. IMAGES FOR DISPLAY PURPOSES ONLY. MODELS MAY DIFFER. PUBLISHED STOCK MAY NOT BE AVAILABLE AT ALL STORES AND IS SUBJECT TO STOCK AVAILABILITY. QUANTITIES ARE LIMITED. TERMS AND CONDITIONS APPLY.



# A.SHAK

Est. 1958

0861 1ASHAK

0861 127 425

E: sales@ashak.co.za

www.ashak.co.za

## TIRED OF YOUR OLD TILES & MELAMINE CUPBOARDS?

### Just TilePrime and then paint them!

First Prime ...

DIY  
MADE  
EASY

Then Paint ...



**TIP:**

Mask Areas You Do Not Want  
Painted With Masking Tape!

**TIP:**

Clean Surfaces Before  
Priming For Best Results.

- Apply TilePrime with a brush or roller
- It is economical & easy to use
- TilePrime Offers excellent adhesion
- Clean equipment with water afterwards
- TilePrime is dry after 24 hours
- Apply paint over TilePrime
- TilePrime is compatible with most paints
- **Do not paint kitchen work surfaces!**

## TilePrime

Litre Covers  $\pm 10m^2$





## Making the most of our rainfall

It is maybe a bit puzzling that, although rain is a liquid, we measure it in millimetres, which is a metric unit for measuring length. And how can we measure rainfall when the rain soaks into the ground or runs off it into drains or streams? When we talk about millimetres of rainfall we are in fact referring to 1mm of rain in an area which is enough to evenly cover the ground in that area with a layer of water

1mm deep. According to the SA Weather Service (SAWS), "what is meant by 1mm of rainfall is rainfall equivalent to 1 litre of water in a 1 square metre box with no runoff, infiltration or evaporation". We casually talk about rainfall in millimetres, but in fact we refer to the number of millimetres that have fallen within a specific period of time. Unless we state a specific length of time ~ eg, "we had 10mm in 15

minutes", it is assumed that it is within 24 hours. The SAWS measures rainfall at 08h00. The rainfall measured between 08h00 yesterday and 08h00 today is recorded against yesterday's date on their database. But when measuring rainfall, a square metre box is not practical to leave outside, especially if you have animals on your plot, so if you wish to measure your own rainfall a rain gauge is used. The



Standard rain gauge.

standard instrument for the measurement of rainfall is the 100 mm rain gauge.

Continued on next page

## IRRIGATION

From previous page

names proudly emblazoned on the vanes, namely Climax

and Stewarts & Lloyds. Climax windmills are still manufactured locally, in Bloemfontein. Closer to Gauteng, Poldaw mills are manufactured in Villiers under license to the UK. Another current brand, particularly in the Eastern Cape, is Aermotor, imported from the US. Having been the only method of extracting subsurface water before the development of the electric pump, windmills lost their popularity towards

the end of the last century, with many falling into disrepair. Now, however, with unreliable (and expensive) electric

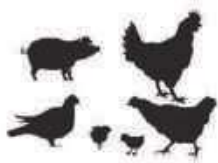
power, cable theft and the like, not to mention the move towards eco-friendly infrastructure, windmills are enjoying a resurgence. 🌱

**Quick's Pets**  
What pets' dreams are made of...  
Sales: 076 859 3033  
www.quickspets.co.za

**F SERIES PARTS  
F100 & F250**

**CRAIGARY ENTERPRISES CC**  
99 7th Ave, Edenvale  
T: 011 609 3631  
F: 011 609 3693  
E: craigary@global.co.za

**SUPER  
AGRI  
SCIENCE**  
LEADERS IN TOTAL PRODUCTION IMPROVEMENT



**One stop for  
Improved health  
during production**

### ON-FARM PRODUCT RANGE

#### Super Sal Stop®

Reg. No.: V29004 (Act 36/1947)  
Water biocide for assisting with  
Enterobacteriaceae pathogen control

#### Gutpro®

Reg No.: V26234 (Act 36 of 1947)  
Assisting with gut health  
improvement & waterline cleaning

#### Super Tonic®

Reg. No.: V28454 (Act 36/1947)  
Nutritional supplement for  
assisting growth

#### Super Air®

Reg. No.: V29002 (Act 36/1947)  
Aiding in the improvement of air  
quality & respiratory problems

#### WS Vitamins & Minerals®

Reg. No.: V28456 (Act 36/1947)  
Supplement for aiding in the relief of  
stress factors

#### Eliminator™

Sanitizer & manure improver that  
binds moisture, odours & ammonia  
with strong antibacterial properties

#### Leading performance enhancement products

#### CONTACT US:

www.superagriscience.co.za

SALES: Corne Prinsloo corne@sasorp.co.za (+27) 81 552 8491 TECHNICAL: Jenna Davis salesadmin@sasorp.co.za (+27) 65 9745115

Contact Super Agri Science for a custom program for your farming system needs





Positive Displacement  
Pumps and  
Discharge Heads  
Columns & Sockets  
Line Shafts  
Bobbin Bearings

# WASA PUMPS

Electric Motors  
& Control  
Boxes



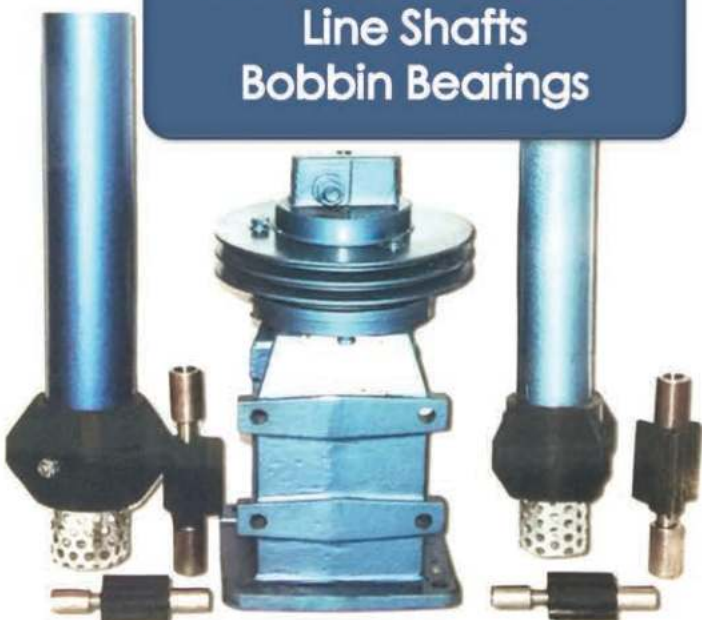
Submersible Pumps  
and Accessories

Centrifugal  
Pumps



**FOR ALL  
YOUR  
WATER  
NEEDS!**

PLOT 314B, 6TH AVENUE, BREDELL, KEMPTON PARK  
TEL : 011 552 5938 E-MAIL : [ken.wasapumps@gmail.com](mailto:ken.wasapumps@gmail.com)  
KEN FOSTER - 082 606 1427 • CRAIG FOSTER - 076 801 8692  
WEBSITE : [www.wasapumps.com](http://www.wasapumps.com)





From previous page

This is essentially a circular UV protected plastic funnel with a diameter of 130mm, which is kept in an open area, so that it collects the rain into a graduated and calibrated cylinder. The measuring cylinder can record up to 100mm of rain. You can make your own rain gauge out of any can, but then you will have to use a formula to measure the rainfall: the height of the water in the can is equal to the volume of water in the can divided by the area of the opening. For most of us, life is too short to do these calculations. The other calculation you might consider is how much rainwater you can harvest from the roof of your house. Proponents of rainwater harvesting calculate that off a 100m<sup>2</sup> iron roof one will

harvest 1 000 litres of water for every eleven millimetres of rainfall. There are a couple of factors that will affect this figure, of course, notably the pitch of the roof, the angle at which the rain is driven by any wind as it falls, as well as the type of roofing material. The annual average rainfall in Gauteng varies between just more than 700 mm on the Witwatersrand and just more than 600mm north of the Magaliesberg. This equates to 63 000 litres off a 100m<sup>2</sup> roof on the Witwatersrand, or 54 000 litres north of the Magaliesberg. Financially this represents a saving of about R1 300 per year on the current Ekurhuleni water tariff.

Why should we be considering harvesting rainwater? Not only do we live in a water scarce area, but climate change is putting further stress on our limited resources, by affecting rainfall and increasing evaporation. For those of us who are reliant on municipal water supplies it is highly likely that water costs will escalate more rapidly over the next few years, given that many of the input costs are linked to electricity. Another reason for harvesting rainwater is based on the fact that the quality and reliability of both our municipal and ground water supplies are directly impacted by the government's ability to

successfully manage our water infrastructure. Most areas in Gauteng are at some stage affected by outages, and many by deteriorating water quality. Another good reason why a smallholder should consider rainwater harvesting is the relative ease with which a meaningful volume of water can be trapped on a smallholding. Our rooves tend to be larger than those of urban houses, as even if our houses are the same size there's often an outbuilding roof that can be fruitfully set up for rainwater collection. And the size of our properties makes it easy to use cheap, large tanks connected in series to maximise one's harvest. 🌿



Harvesting rainwater can save you money.

**GM Electronics**  
Security Suppliers (Pty) Ltd  
Canadian Panel 360W  
R2 150.00  
Goodrive Inverter:  
4.6kW  
R32 500.00  
Pylontech Batteries  
Li-Ion 2.4kW  
R17 500.00  
or 3.5kW  
R24 000.00  
[www.gmelectronics.co.za](http://www.gmelectronics.co.za)  
Contact Chris: 082 619 2556

**Clovelly Poultry**  
\*Layers:  
Day-old Pullets  
\*Day-old Unsexed  
\*Day-old Cockerels  
(Spring chicken)  
**Delmas**  
083 393 0935

**Simparica sarolaner**  
Get rid of ticks, fleas and mites.  
GET SIMPARICA.  
Your best friend's best friend.

For more information, visit [www.simparica.co.za](http://www.simparica.co.za) or call 0800 123 456. Each Simparica tablet contains 100mg of sarolaner and 10mg of moxidectin. It is a chewable tablet that can be given to dogs of all breeds and sizes. The active ingredients, sarolaner and moxidectin, work together to kill ticks, fleas, and mites on the dog's body. Simparica is also effective against heartworm disease, which is caused by a parasite that is transmitted by mosquitoes. It is important to keep your dog on Simparica year-round to protect them from these pests and diseases. For more information, visit [www.simparica.co.za](http://www.simparica.co.za) or call 0800 123 456.

Full product information available from Zoetis South Africa (Pty) Ltd, c/o Reg. No. 2025/00000/07, 100 Foch Road, Suite 20, Private Bag 2076, Sandton, 2046, South Africa. Tel: +27 (0) 21 550 0000 or 0800 123 456.

**zoetis**



**STIHL**

WET / DRY VACUUM CLEANER

**SE 122**

1.5 KW • 250 MBAR • 3 700 L/MIN

**R6 385.00**



PETROL MISTBLOWER

**SR 420**

56.5 CC • MAX 1 260 M<sup>3</sup>/H

**R7 695.00**

13 L CONTAINER • 12 M SPRAY WIDTH



PETROL SWEEPER

**KG 770**

13 KG • 77 CM SWEEPING WIDTH

**R8 105.00**

50 L WASTE CONTAINER  
FOR AREAS UP TO 1500 M<sup>2</sup>



HIGH PRESSURE CLEANER

**RE 130 PLUS**

2.3 KW • MAX 500 L/H

**R6 175.00**



ELECTRIC SHREDDER

**GHE 105**

19.0 KG • 2.2 KW

**R4 695.00**

MAX BRANCH THICKNESS 35 MM  
FOR FRESH MATERIAL ONLY



ASK YOUR DEALER FOR ADVICE ON OUR RANGE OF SHREDDERS

# REDUCE RECYCLE REFRESH

Reduce, Recycle and Refresh your  
home and garden this spring.

PRICES VALID UNTIL 31 OCTOBER 2020.  
RECOMMENDED RETAIL PRICES, INCL. VAT. E&OE.

ALBERTON: LAWNMOWER CLINIC 011 907 8484 BENONI: MASTER MOWERS 011 395 2648 • BWANA TOOL & PLANT HIRE 010 591 2858 • MICA BENONI 011 845 2986 BOKSBURG: LAWNMOWER RANCH 011 918 5771 BRITS: ENVIRO CHAINSAWS BRITS 012 252 2479 BRONKHORSTSPRUIT: BRONKHORSTSPRUIT FIETSWINKEL 013 932 0531 CENTURION: ENVIRO CHAINSAWS CENTURION 012 653 2479 • PRO-LAWN 012 663 3321 DELMAS: DELTOOL 013 665 3192 HEIDELBERG: MASAKHANE INDUSTRIES 016 349 6927 JOHANNESBURG: GREEN'S INDUSTRIAL 011 614 0295 JOHANNESBURG SOUTH: GLEN MOWERS 011 436 2220 KEMPTON PARK: PRECISION MOWERS 011 391 0708 KRUGERSDORP: GP LAWNMOWERS 011 955 3610 PRETORIA: NICO'S MOWERS 012 548 4422

PRETORIA EAST: LAWNMOWER LEGENDS 012 997 0464/8 • THE LAWNMOWER SHOP 012 809 0240 PRETORIA NORTH: CHAIN SAW MECCA 012 546 1061/5993 RANDBURG: LAWNMOWER SPECIALISED SERVICES 011 789 2308 RANDFONTEIN: POLOMINO TOOL & PLANT HIRE 011 412 7110 SANDTON: LIVINGSTONES GARDEN & HOME 011 802 4822 SPRINGS: MR LAWNMOWER & POOL 011 811 5067 TURFFONTEIN: TOOLTECH 011 683 1761 VANDERBIJLPARK: SCHOLINGS INDUSTRIAL 016 933 9492/40 VEREENIGING: TL LAWNMOWERS & APPLIANCES 016 455 2556 • ZIK'S OUTDOOR POWER SOLUTIONS 016 422 4502 WONDERBOOM: MIKTON TOOLS 012 804 7272 WYNBERG: MFANGANO SOLUTIONS 011 440 2072



# Want quality dripline at affordable prices?

Then Afriq Water will be the place to get your Afriq Drip dripline.

For the past few months Afriq Water has shared that we are in process to import a top of the class dripline manufacturing machine.

The benefits of manufacturing on site as opposed to imports, are plenty.

Most importantly there will be a **cost saving** – which Afriq Water will pass on to the customers!

Secondly there will be **certainty of stock availability**.

What we do not have on the floor, will be manufactured within a week or two, addressing your irrigation needs quickly and effectively.



For Afriq Water the wait is finally over, at the time of writing this piece the machine has arrived and is in the process of being commissioned.

Afriq Drip will be manufactured to address a broad range of requirements:

Emitter spacing	Drippers	Wall thickness
from 10cm – 1,2m	1 l/h, 2 l/h, and 4l/h	<b>Light</b> 0.15mm – 0.20mm
30, 45 and 60cm will be carried as normal stock items	1,6 l/h will be available soon	<b>Medium</b> 0.30mm – 0.60mm
		<b>Heavy</b> 0.90mm – 1.1mm

## Thank you to all our customers

who has waited patiently until we have dripline in stock again, and who has been excited with us, and joined us on this journey.

Please visit our website for our full range of products, and the new prices on dripline.

**CONTACT US**

and visit our online shop



+27 61 502 2547

admin@afriqwater.co.za

www.afriqwater.co.za

Afriq water





## OPEN FOR BUSINESS

# Starting a business on your plot

**R**etrenched? Or lost your job because of Covid? You will probably have looked on the internet for ideas on starting a business on your smallholding. You will find all sorts of suggestions for making an income, often written by estate agents who are trying to sell smallholdings, and they all seem mighty glib. It's easy to rattle off ideas when one does not have stark reality staring one in the face. Finding another job in the present economy will be challenging and many will be

thinking about being proactive, rather than waiting for something to fall into their laps. It is never easy to start a new business and only a supreme optimist will believe that now is a good time to be trying. So let's look at what can practically be done.

Firstly, register for UIF. Provided your employer has issued a Section 189 letter, you will be able to claim your unemployment benefits for a period of up to twelve months. Simply go to [www.ufiling.co.za/uif/unemployment-benefits](http://www.ufiling.co.za/uif/unemployment-benefits) to register and log your online claim.



Note that this is for an ordinary unemployment insurance claim, and is unrelated to the

you have that might be of use?

What do you have on your plot that can be exploited? How much space do you have? How much arable land? Is your water supply reliable and plentiful? What infrastructure do you have in the way of sheds, pens, stables, dams and fencing? Do you already have a vegetable garden and can it be expanded? What pastures do you have for grazing? Do you already have poultry and livestock and can you make

Continued on next page

**STOP THIEVES**  
**Outdoor Wireless Alarm**  
 Protect Buildings, Livestock etc  
**Complete system with 4 Sensors & 2 remotes**  
**R2 950.00**  
**Colin 079 180 2853**  
[colinjohnrogers@gmail.com](mailto:colinjohnrogers@gmail.com)

**GM Electronics**  
 Security Suppliers (Pty) Ltd  
[chris@gmelectronics.co.za](mailto:chris@gmelectronics.co.za)  
**Inverter Bundle**  
 1x 3KVA Inverter  
 2x 120AH Batteries  
 1x Battery Box  
**R13 500**  
**Contact Chris 082 619 2556**

**Knittex**<sup>®</sup>

Since 1964



**Manufacturers of Knitted Agricultural and Decorative Shade Netting**

**WE'VE GOT YOU COVERED!**

*Knittex is the number ONE brand in quality and diverse shade netting solutions.*

**PROTECTS YOUR CROP AGAINST DAMAGE CAUSED BY SEVERE WEATHER CONDITIONS**  
 wind, sunburn, hail damage, birds & larger insects

DELIVERING ON PROMISES *Since 1964*

+27 (0)11 692 1658 | [sales@knittex.co.za](mailto:sales@knittex.co.za) | [www.knittex.co.za](http://www.knittex.co.za)





**WEBSITE:**  
[www.mnani.co.za](http://www.mnani.co.za)  
[www.tuffy-agri.co.za](http://www.tuffy-agri.co.za)  
**EMAIL:**  
[gert@mnani.co.za](mailto:gert@mnani.co.za)  
[sales@mnani.co.za](mailto:sales@mnani.co.za)  
[accounts@mnani.co.za](mailto:accounts@mnani.co.za)



**FOR ENQUIRIES**  
**TEL 013 665 3054**  
**IMPLEMENT SALES**  
**076 560 9856**  
**3<sup>RD</sup> STREET 8, DELMAS**

## **FOR THE SMALL HOLDER**

### **TUFFY MINI ROUND BALER**



**AVAILABLE SIZES:**  
**TRB 0850, TRB 0870 & TRB 1070**

### **TUFFY HAYCUTTER**



**AVAILABLE IN 1.2m, 1.5m & 1.8m**

### **TUFFY COMBINATION GRASS SEEDER**



**AVAILABLE IN 2.4m**

### **TUFFY SLASHERS**



**AVAILABLE IN**  
**800mm, 1.2m, 1.5m & 1.8m**

### **TUFFY GRASS SEEDER**



**AVAILABLE IN 2.4m AND 3m**

### **TUFFY GRASS ROLLER**



**AVAILABLE IN 2.5m AND 3m**



**ALL IMPLEMENT REPLACEMENT PARTS**  
**ANY MAKE OR MODEL**  
**DISC BEARINGS, DISC SHAFTS,**  
**DISC SPACERS, RIPPER TINES, CULTIVATOR TINES**  
**BOLTS & NUTS, PTO'S, UNIVERSALS, YOKES,**  
**SPROCKETS, CHAIN,**  
**IMPLEMENT PINS, TOP LINKS**  
**MOWER SPARE PARTS**  
**BLADES, BOLTS, BUSHES.**



## OPEN FOR BUSINESS

From previous page  
income from them? What equipment do you have, such as tractor, plough, rake, etc? Do you have a greenhouse or growing tunnels? What vehicles do you own? What manpower do you have? Are there family members who can work with you? What skills and knowledge do they bring that could be of use? Can you afford to pay outside labour? As a smallholder you will be thinking about agricultural pursuits such as selling produce: eggs and chickens,

milk, livestock for slaughter, vegetables, herbs, fruit or nuts, or producing seedlings for flowers, shrubs, trees or edible plants, fish from your dam or aquaponic system, honey and beeswax or firewood.

Can you process your produce and sell products such as jams, marmalades, chutneys, pickles and preserves, frozen vegetables and fruit, fruit and vegetable juices, smoked meats, dairy products such as butter, cheese and yoghurt, processed wool in the form of yarn or fabric. You can set up a farm stall selling a variety of

wares. Do you have the know-how and resources to breed pedigreed animals, including dogs, cats or birds, as well as poultry or livestock? Perhaps you can establish agritourist accommodation, B'n B or self-catering, a restaurant, a petting or educational farm, a farmers' market or a riding school. You might consider using your space for non-agricultural pursuits such as storage facilities, parking facilities for camper-vans or boats, camping or "glamping", outdoor adventure activities, fishing and water sports, venue for yoga and other exercise classes, camps for schools, leadership or team-building, dog kennels or cattery, dog training, dog grooming, conference centre, art gallery, exhibition centre, hairdressing and beauty therapy, wellness therapies or warehousing. You can make things such as breads, cakes, biscuits or sweets, and other creative products such as

pottery, paintings, carvings and statues, basketry, along with a wide variety of needlework. Woodwork and metalwork products can be decorative or practical. You can offer classes in all of these pursuits. The success of any venture will depend on your location. Where you are situated in relation to towns, roads, developments and other settlements could hold the key to the correct choice of activity. How far you are from your markets must influence your choice of

Continued on next page

**BANG-A-LERT**  
**NEW!! All-Steel version**  
Stop crime on your property  
Affordable & Practical  
More than 6 000 units sold in SA  
Simple Installation  
No Power Required  
Dealer Prices for more than 10 units  
**Mason Engineering**  
083 611 2857  
[www.bangalert.co.za](http://www.bangalert.co.za)



Making homemade jam to sell.

**The Bee Box**  
Complete Beehives  
professionally made and  
dipped in hot waxol.  
Brood box and super all with  
frames and aluminium lid  
Midrand  
082 791 3393 Porky Scriven  
Tzaneen  
082 604 5828 Jason Scriven



## Wastewater Treatment Systems

**Treating waste water  
since the turn of  
the century!**



**Sizes available for single houses  
to large estates**

**014 736 3463/082 535 4576**

**steve@scarabsa.co.za**  
**[www.scarabsa.co.za](http://www.scarabsa.co.za)**

**TREAT YOUR WATER TO A SCARAB SYSTEM**



# MESH FOR BIRDS



Open 7 days a week from 8am to 5pm



Galvanised Welded Mesh  
BEFORE & AFTER WELDING



226 High Road, Pomona  
Kempton Park  
Inside Birds & Pets For Africa



[www.meshforbirds.co.za](http://www.meshforbirds.co.za)  
Barry 083 679 1317  
Adelle 083 427 7101



## Preparing your summer grazing

One of the drawbacks of keeping livestock on a smallholding is that it is difficult, if not impossible, to prevent one's limited paddock space from becoming overgrazed. Over time, ie after a few seasons, this results in one's pasture becoming little more than a haven for unpalatable grass species and weeds which, if nothing else, means that one must buy in fodder, often at great additional expense. When this happens one is left

with little alternative but to plough up the paddock in question and reseed it with something fresh and palatable. How to do this, and what to plant? You can either clear the land completely and reseed it, or you can simply overplant it with a species that will, in time, overcome the weeds by effectively smothering them. One of the factors to consider when purchasing seed, apart from the seeding rate, ie the

amount required per square metre, hectare etc, is the germination percentage of the seed of the species you choose, which should be available from your seed merchant. Next, ensuring the seed is spread evenly is a consideration. Here is a tip, if you are doing so manually. Divide up the area to be seeded into, say, quarters, by placing flags at the appropriate points on the boundary fences and, perhaps, a stake



*Cynodon dactylon* seed, AKA couch grass, Bermuda grass

in the centre. Now mix up all the seed with a quantity of fine, dry sand  
Continued on next page

From previous page

enterprise, for transport costs can be the maker or breaker of a new venture.

You also need to consider the physical topography and geology of your plot ~ does it lend itself to keeping and feeding animals or planting crops?

What can you afford to do? Some say a plot is a bottomless pit into which you throw money and, certainly, developing any enterprise on one's smallholding will require some degree of capital, if not for buildings and facilities,

then at least for consumable inputs such as fertiliser, seed, animals, feed, other raw materials, as well as machinery.

You need to research your potential customers. Whether you are selling products or services, will you be able to reach enough people who will want to buy your wares? Will they be prepared to pay enough for you to make a living? Not only should there be a gap in the market but there must be a market in the gap.

## OPEN FOR BUSINESS

Some say that there are only three things that you need to run a successful business. They are as follows:

- ☐ Find a NEED that people have;
- ☐ Devise a SOLUTION that they are prepared to pay for;
- ☐ Share it profitably with as

many people as you can. Once you are profitably sharing your solution with people that need it you have a business. In the next edition we will look at marketing your business. 🌱



### Easyhatch

Industrial and hobby incubators  
Parrot brooders

*Broiler chicks available weekly!!*




[www.easyhatch.co.za](http://www.easyhatch.co.za)  
016 004 0142  
079 893 6383  
(Vanderbijlpark)

## TRACTOR MECH

**Vaaljapie Specialist**

*Restoration of New & Old Tractors*



For all:

- Sales
- Spares
- Rebuilds
- Service & Repairs

of your:

- Tractors
- Slashers
- Implements
- Stationary Motors

**Johan Bouwer**  
072 576 2392

**Martina Bouwer**  
072 661 6980

403 Bakenkloof Street Pretoria North 0182

## ROOF SHEETING



Buy direct from factory

ADVANTAGES:	IDEAL FOR:
<ul style="list-style-type: none"> <li>• Shatterproof, Weather &amp; Hail Resistant</li> <li>• UV Protected</li> <li>• Over 70% Light Transmission</li> <li>• Product is 2,5mm thick</li> <li>• Domestic &amp; Industrial</li> <li>• Easy to Install - DIY</li> <li>• Choice of 4 Colours</li> <li>• 7 Year Guarantee</li> <li>• Cheaper than Fibreglass</li> </ul>	<ul style="list-style-type: none"> <li>• Patios</li> <li>• Carports</li> <li>• Zozo Huts</li> <li>• Hot Houses</li> <li>• Pool Houses</li> <li>• Factory Skylights, etc</li> </ul>

PLEASE CONTACT  
**Sandra 083 233 3820**  
[info@4eversheeting.co.za](mailto:info@4eversheeting.co.za)  
[www.4eversheeting.co.za](http://www.4eversheeting.co.za)

**4EVER SHEETING**  
POLYETHYLENE ROOF SHEETING



1 West Street, Boksburg East Industrial



Office :011 914-1922/23



<https://www.reapersagri.co.za/>



Pieter Visagie (SNR)

[pieter@reapersagri.co.za](mailto:pieter@reapersagri.co.za)



Pieter Visagie (JNR)

[pieterjnr@reapersagri.co.za](mailto:pieterjnr@reapersagri.co.za)

PLEASE HAVE A LOOK  
AT OUT BRAND NEW  
WEBSITE:

<https://www.reapersagri.co.za/>



**Landini Solis 90  
4x4 with cab**

**Landini Solis 75  
4x4**



**Monosem Planters**

**Specials on Tractors, Slashers,  
Sprayers and Spares!**



**1m -4.5m Slashers**

**HD and MD**



**Reapers Powa Sprayer**



**Landini Solis**

**ALL SLASHER AND TRACTOR SPARES  
NOW AVAILABLE !!**



**PTO-Shafts**



**FULL RANGE OF GROUND – ENGAGING IMPLEMENTS FROM TOP BRANDS**



From previous page

(plaster sand is ideal), and the required amount of granular fertilizer for the whole job. Divide the resultant mixture into four and fill your seed spreader, going back and forth over the same quarter of the field until that batch is finished.

Complete the job by doing the same in the other three quadrants.

The job is not finished, however, as you still need to mix the seed with the soil of the field to cover it. This can be achieved by towing a rake over the field, and then compacting the soil by rolling the field with, even, a garden roller.

If you are lucky to have what is colloquially called a teff roller, more correctly called a Cambridge roller, you will achieve these last two steps in one as the corrugations of the roller move sufficient soil over the seed while compacting it at the same time. Finally, pray for rain, or set a sprinkler on the field to ensure sufficient moisture to attain maximum germination. The species, or mix of species, of grass that you choose for your field will depend on what uses you intend for it, the rainfall in your area, and whether you want to reseed the field



Example of Cambridge roller, showing ridged drum.

annually, or want to do a once-off job. Some species are better for grazing, some are better for cutting and baling as fodder. Some are perennial, while others, such as *Eragrostis teff*, are annuals. Some have higher nutrition content, such as lucerne, some are indigenous and some, particularly the new commercial fodder species, are imports. And, of course, you don't need to plant only one

species but could seek to emulate natural grassland which is a mixture of species. There are even specially formulated mixes for this purpose, for use on different types of grassland. These are available from seed companies, and come with full instructions, seeding rates etc. Three botanical terms are important when choosing your species, and relate to the way the species behaves in undergrazed and overgrazed

veld.

☐ Decreasers are species abundant in undergrazed veld but which decrease as the veld is grazed. They are usually the most palatable species and are thus eaten first. Common examples are *Themeda triandra* (rooigras) and *Digitaria eriantha* (Smutsfinger).

☐ Increases are classified in three subtypes. The first are species that are also abundant

Continued on next page

## HYDRO SOLUTIONS

WATER AND SOLAR TECHNOLOGIES

### 180w Solar DC Pump Set

**Harness the power of the sun.**

- Set includes: Motor, Pump, Control Box, 270w Solar Panel, Level Sensors.
- Easy to install.
- Maximum Head: 50m
- Maximum Flow: 1500 litres / hour
- This pump can deliver up to 840 l/h @ 30m head.

**Now Only R10990**

**1 x 270W Solar Panels**

### 400w Solar DC Pump Set

**Harness the power of the sun.**

- Set includes: Motor, Pump, Control Box, 2 x Solar Panels, Level Sensors.
- Easy to install.
- Maximum Head: 80m
- Maximum Flow: 1400 litres / hour
- This pump can deliver up to 480 l/h @ 60m head.

**Now Only R14990** Incl

**2 x 270W Solar Panels**

### High Head Solar Borehole System

**Complete DC/AC Inverter system with pump & panels.**

- 750w Motor
- 4 x 320w High Voltage Panels
- Max Head: 173m
- Max Volume: 1500 l/h
- This pump can deliver 1200 l/h @ 80m

**Now Only R29990** Incl

**4 x 320W High Voltage Solar Panels**

**VISIT OUR STORE IN PTA EAST**

☎ 012 807 3256 ■ sales@hydropumps.co.za

**www.hydro-solutions.co.za**

## WIRE WORK

Specialists in:

- BARBED WIRE
- STANDARDS & DROPPERS
- NETTING WIRE
- B GRADE WELDED MESH
- WELDED MESH
- GATES, POSTS & STAYS
- GALVANISED WIRE
- DIAMOND MESH WIRE

**Welded Mesh 1.8 x 100 x 50 x 30m = R800**

*We only sell quality products!*

**Kerry: 084 840 0409**

kerry.wire@hotmail.com



## HOOF CARE

# When and why to shoe a horse

A part from shoeing a horse because of excessive wear to the wall of the hoof caused either simply through exercise, or from working on hard, harsh surfaces, or because the horse has weak, thin hoof walls, there are a couple of more technical reasons why your veterinarian or farrier will recommend shoeing.

These include shoeing for a purely medical reason, to enable medication and dressings to be held in place against the bottom of the hoof, or to assist in holding the wall of the hoof together

in the case of it cracking. A horse with an awkward gait may require shoeing in a particular fashion to correct an over-reach (itself a notorious cause of loss of shoes on the front hooves), or to correct and inward or outwards arc in the forward movement of the horse's legs. In this case the angle of the hoof is altered by the farrier, either to make it more upright, or if already too upright, to make it more slanted, or by trimming the hoof more on the inside than the outside and vice versa. In such cases great skill is

needed on the part of the farrier, first to recognise the nature of the problem, and secondly to do the right adjustment. And great patience is required on the part of the horseowner, because corrective shoeing is not a quick-fix, but can take many months, and many successive shoeings, to have the desired effect.

But at this time of year, with the arrival of the rainy season, and wet ground and cloying mud, one of

the issues facing horseowners is the loss, or at least loosening of shoes. There is nothing so tedious as having one's horse lose a shoe, particularly if this happens at an event, hunt or other horsey gathering.

Continued on next page



Horse with shoes.

## PASTURE

From previous page

in underutilised veld, but which are unpalatable and are thus shunned by livestock. Common examples are *Hyperthelia dissoluta* (yellow thatching grass) and

*Trachypogon spicatus* (giant spear grass).

The second subcategory of increasers are abundant in overgrazed veld and are common in lower rainfall

regions. Common examples are *Aristida adscensionis* (annual bristle grass) and *Eragrostis rigidior* (broad curly leaf).

The third category are also found in overgrazed areas, will push out the decreasers and are even stimulated by light grazing. They are also usually unpalatable and are more common in higher rainfall areas. Common examples are *Elionurus muticus* (wire grass) and *Aristida junciformis* (wiregrass or steekgrass).

Once the seed in the field has germinated and is growing, it should be left for a good few months, preferably a full

season, before being grazed, because the grazing animals will pull up the small plants in their entirety rather than merely pulling off the edible leaves and stems. 🌿

For all your  
Greenhouse,  
Shade Structures  
and Irrigation  
solutions.



**NetTunnels**  
IRRIGATION AND HYDRO  
[www.nettunnels.co.za](http://www.nettunnels.co.za)



For all your Greenhouse Tunnel needs  
including Hobby, Seedling, Standard,  
Net and Multi-span Tunnels.  
Perfect for small or big farming.

We also supply irrigation systems,  
including pumps, sprinklers, driplines etc



Follow us on Facebook

CALL US TODAY, JOHAN:  
064 506 5772 / 082 551 3394  
[info@nettunnels.co.za](mailto:info@nettunnels.co.za)

< Scan code / @nettunnels.co.za

**Blacksmith & Farrier**  
Est. 1968

*On time, every time*

We specialise in:

- Foot balancing
- Hot and cold shoeing
- Laminitis

**Joe The Farrier**  
082 891 9655



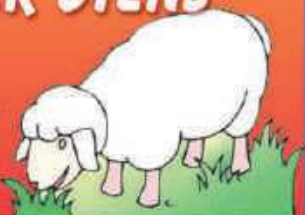
*It's*  
**Sheep Shearing Season!**

**SHEEP SHEARING SERVICE**  
**SKAAP SKEER DIENS**

**082 878 5623**

**083 273 4267**

**082 602 4462**





OUR PRICES ALWAYS INCLUDE VAT



95 Ampthill Avenue, Benoni  
011 422 6354  
072 847 0978

## Water Pumps - Petrol & Diesel



*Inlet & Outlet  
Hose available*

**MODELS  
AVAILABLE**  
Petrol  
1" to 4"  
From R2 200  
Diesel  
2" to 4"  
From R7 150  
VAT incl

## LOADSHEDDING? STANDBY POWER FOR HOUSES, OFFICES & FACTORIES

### Petrol & Diesel Generators



**6.5kVA Diesel Generators**  
Electric start.  
Single/3-Phase\* - R19 500  
3-phase - R19 250  
VAT incl  
\*PICTURED ABOVE

**6,5kVA Petrol Generator**  
Single Phase, Electric Start  
R10 500  
VAT incl

**2,8kVA Petrol Generator**  
Single Phase  
R4 565  
VAT incl



**6.5kVA Diesel  
Silent with ATS**  
8kVA - R26 500  
12kVA - R75 000  
VAT incl



**3.5kVA Diesel Single  
phase. Electric start**  
R12 600 VAT incl

AND MANY MORE MODELS TO CHOOSE FROM

## SPECIALIST PUMPS



**600 litre  
TANK and  
SPRAYER COMBO**  
R9 850  
VAT incl

### Power Sprayer/ Fire Fighter

**R5 900  
VAT incl**

Accessories Included:  
1 x Hose Reel  
1 x Spray Lance  
1 x Swivel Fitting  
1 x Spray Gun  
20m HP Hose  
Suction & Return  
Hose

### 2" Petrol High- pressure Pump

**R4 175  
VAT incl**



### Chemical Pump Trash Pump

**R4 710  
VAT incl**

### Pedestal Pulley Pump

**SU50, SU80,  
SU100**  
From R1 430  
VAT incl



### High-pressure Washer

**R12 950  
VAT incl**

Petrol-powered,  
280bar with  
10m hose, spray  
lance, etc

## Petrol & Diesel Engines

**Models available:**  
**Petrol (horizontal shaft)**  
7HP recoil start R2 100  
7HP electric start R2 965  
7HP + reduction box R2 525  
9HP + reduction box R3 500  
9HP recoil start R4 050  
13HP recoil start R4 250  
16HP recoil start R4 500  
16HP electric start R5 690  
VAT incl

**Diesel (horizontal  
shaft)**  
5HP R5 275  
6HP R5 715  
10HP R6 875  
10HP R8 525  
Electric  
Start  
12HP R9 795  
20HP 2 CYL  
Electric R30 635  
Start  
VAT incl

## Lawnmower Engines

**Models  
available:**  
V65, V85,  
V150, V220  
From R2 500  
VAT incl



### Brushcutter

**R2 200  
VAT incl**

### Chainsaw

**R2 300  
VAT incl**

### Petrol & Diesel Cultivators

**From R9 130  
VAT incl**

### Earth Auger

**R3 295  
VAT incl**

52cc,  
including  
200mm  
drill bit

### Tamper/Rammer Petrol/Diesel

**R21 945  
VAT incl**

### Compactors

**From R8 800  
VAT incl**

**ALL PRICES VAT INCLUSIVE  
FULL SPARES BACKUP & SUPPORT**

*Pictures for illustrative purposes only.  
Actual products may differ. E&OE*

[www.magnumpower.co.za](http://www.magnumpower.co.za)

OUR PRICES ALWAYS INCLUDE VAT

OUR PRICES ALWAYS INCLUDE VAT



# WATER CONSERVATION

## How to save water (and money) in your home

As Gauteng's dam levels continue to fall, residents using municipal water are being urged to use water sparingly, and there are a number of simple things smallholders can do, to do so.

❑ Check your washing machine instructions to find out which cycle uses the least water. You can also place your

outlet pipe to discharge into a bucket or drum, rather than down the drain. The used water can be used to flush toilets.

❑ Investigate the Sputnik Wonderwash pressure washing machine, which apparently uses 6-8 litres of water to wash 2,2kg of washing. You don't need electricity ~ you simply turn

the handle for two to three minutes ~ and can also drain the used water into a bucket, for a toilet flush.

❑ Surprisingly, your dishwasher uses less water than hand washing dishes. Again, check which cycle uses least water and stack dishes in the machine until it is full before running it.

❑ Reducing water use from

Continued on next page



Sputnik Wonderwash.

## HOOF CARE

From previous page

Thick mud acts as both a magnet for shoes, with the moisture it contains softening the wall of the hoof, working the shoe loose and eventually pulling it off.

Some horses are more prone to losing their shoes but there are simple preventative measures one can take which will go some way towards ensuring the shoe stays intact with the hoof.

Firstly, one assumes that the

farrier has done a proper job of attaching the shoe, which should include ensuring that the bottom of the wall of the hoof is as level as possible, minimising the possibility of sand and mud working their way into the space between the hoof and the shoe.

Next, a simple sound check will determine if the shoe is coming loose. This is simply achieved by walking the horse over a bricked or

concreted surface. A clinking sound, rather than the usual "clip-clop," is the sign of a shoe coming loose.

Retightening a shoe is not difficult, particularly if one has a specialist tool named a clencher to hand.

A clencher (pictured right) resembles a long-handled, long jawed pair of pliers, one jaw of which is flat and the other curled upwards.

Start by raising the hoof and with a small hammer gently knock the nails back into place. Then, using the clencher, placing the flat jaw



You will need a clencher to tighten a shoe that has come loose.

against the head of the nail and the curved jaw on the clench itself. Tightening the clencher pulls the clench down towards the shoe, tightening it into place. Be careful not to tighten too much or you run the risk of ripping a hole in the wall of the shoe. If you don't have a clencher you can sometimes achieve the same result using a pipe wrench with the jaws opened to their maximum. 🌿



## ANIMAL FEEDS

Servicing the Agricultural Sector with sustainable and affordable feed solutions.

**SILAGE BALES AVAILABLE**  
R950 per Bale  
880kg Average Weight/Bale  
Excl. VAT & transport from JHB.



Contact Oricol today for more information about our feed solutions:

Jacques.Niemandt@oricoles.co.za/  
sales@oricoles.co.za

c 073 146 2252 t 011 922 5900

<https://www.oricoles.co.za>



TURNING WASTE INTO A RESOURCE

**Capitaine Beeheart PETS FOOD**  
Top quality pure frozen mince  
**BEEF OR CHICKEN**  
DELIVERED TO YOUR DOOR  
Minimum Order for Home Deliveries: 1 case = 16kg  
**072 838 0552**  
**ronalde@polka.co.za**

**SOLAR MAN**  
Pre-planning essential for quotations

- Solar Power
- Backup Power
- Solar Borehole Pumps
- Solar Geysers
- Solar-friendly Appliances

**www.solarm.co.za**  
Tel: 012 809 1525/1427  
**solarman@mwebbiz.co.za**

**Bekostigbare implemente geskik vir die klein boer**

**SKRAPER** *Leem is VERSTELBAAR*  
Nou TWEË groottes: 1.5m en 1.8m wyd  
Gesik vir klein trekkers  
**1.5m - R2 300**

**BOSSIEKAPPER**  
Nou DRIË groottes: 1.2m, 1.5m en 1.8m wyd  
Sonder PTO *Kante is VERSTELBAAR*  
**1.2m - R6 800**

**Pryse sluit BTW in**  
**072 153 8776**



# WATER CONSERVATION

From previous page

taps and showers is an easy way to cut total potable water use. Toilets, taps and showers use a large portion of your domestic water and there are water-saving devices for each of them, which can save 40-60% on your water consumption.

□ High-efficiency tap aerators attached to the spout of basin taps can save large amounts of water and money. The aerator is a small attachment that either fits on to the end of the tap or can be inserted inside an existing spout. It controls the amount of water that flows through the tap without affecting the water pressure. You don't have to install an aerator on all your taps. If running water is used for washing (eg, hands, dishes or food) then an aerator is the solution. In this case, use a 6 litres/min aerator. Old-fashioned oval spout pillar taps can be retrofitted with internal low-flow tap restrictors.

□ Installing a low-flow showerhead achieves a saving of 45-65%. It works by forcing water through small holes in a screen, which adds air to the water and produces a fine but vigorous spray.

□ Older toilet cisterns can hold up to 15 litres of water, while modern ones hold about half that. Standard toilets drain the entire the cistern for each flush. You can put a brick or bottle of water in the cistern so that less water is used, or you can simply bend the bar of the ball-valve downwards so that

it closes the inlet after less water has flowed into the cistern.

More modern cistern fittings are themselves adjustable.

□ Another simple, cost-effective initiative is to convert standard toilets to a hold-flush system that flushes for as long as the handle is held down. You can make a standard cistern hold-flush using only three lead fishing sinkers (weight 85-100g) and a 200mm cable tie. When the toilet handle is pushed down, the internal cistern lever arm is pulled up to initiate a siphon action. A lead sinker

can be attached to the end of the internal cistern lever arm to counterbalance the flush mechanism. The weight of the sinker forces the lever arm down and prevents the entire cistern from draining each flush.

You can also install a dual-flush cistern, but that costs more.

□ Periodically check for water leaks. Ask members of the household to refrain from using any water for at least an hour (to give geysers, tanks and cisterns a chance to fill completely). After half an hour, write down the

numbers on the counter of your water meter and check them again after another hour has lapsed. If there is a difference between the two readings you probably have a leak.

A leaking or dripping tap can waste between 30 and 60 litres of water a day. That is approximately 1 500 litres a month. Fixing leaking or dripping taps can be simple if you just need to replace a washer. But be sure to close the water mains or switch off your booster pump before attempting to fix a leak or change a tap washer. 🌱



Water-saving flow controller.

**B** Bell & Paton  
Plant. Grow. Live.

## Bell & Paton

Portable walk-in greenhouse tunnel  
for the home gardener

Self-sufficient food propagation has never been easier

Easy to construct



**INCLUDED:** • 25mm galvanised steel poles for endoskeleton  
• UV treated, reinforced PE plastic roof to fit over poles  
• Dual zip, roll up door (front and back doors)  
• Roll up side windows with insect net  
• Full instructions and all tools required for construction  
Galvanised 25mm steel **poles easily fit together.**



- 3m long x 2m wide x 2m high = R4 080
- 4.5m long x 2m wide x 2m high = R4 600
- 4m long x 3m wide x 2m high = R5 150
- 6m long x 3m wide x 2.5m high = R8 600
- 10m long x 3m wide x 2.5m high = R11 499
- 12m long x 3m wide x 2.5m high = R13 799

**Free delivery to anywhere in South Africa**  
All Prices include: VAT



The entire greenhouse can be closed with dual zippers that keep the outside world separate from the cozy growing area.

Multiple roll-up windows equipped with insect netting to help control pests.



Available in 6 sizes



Contact Details  
Feel free to contact us

[www.bellandpaton.com](http://www.bellandpaton.com)  
[info@bellandpaton.com](mailto:info@bellandpaton.com)

Phone: Garth 083 320 2922  
Phone: Oliver 083 650 0711



DICLA FARM AND SEED (PTY) LTD  
Plot 11, Van Wyksvlei, Muldersdrift  
Hours: Mon-Fri 07:30-17:00  
Tel: +27 (0) 11 662 1371  
Web: [www.dicla.com](http://www.dicla.com)

Workshop & Aftersales  
New and Used Tractors  
Implements and Trailers  
Earthmoving Equipment  
Tunnels, Plastic & Irrigation



**DICLA**

Dicla Members get special access to specials and web tools. Register on [www.dicla.com](http://www.dicla.com)

**All this for only  
R370 000 + VAT**

## 3 Fieldking Implements

22 disc heavy duty offset harrow  
single row disc ridger  
3 disc plough



## New Holland TT75

modern style and great dynamics  
4 wheel drive



**FIELDKING**

Only to be found at Dicla  
**COMBO DEAL**



**NEW HOLLAND**  
AGRICULTURE

Visit our offices for assistance with tractors, implements, aftersales and tunnel farming.



**DICLA**

### Machinery

Ernst Eichhorn      Megan Aspden  
066 290 6861      082 304 6757  
[ernst@dicla.com](mailto:ernst@dicla.com)      [sales.admin@dicla.com](mailto:sales.admin@dicla.com)

### Horticulture

Dirk Tijssen      Rudolph Palmer  
071 400 3048      079 894 8839  
[dirk@dicla.com](mailto:dirk@dicla.com)      [rudolph@dicla.com](mailto:rudolph@dicla.com)



# SPARTS

## MOTOR SPARES

Tel: 011 967 1295

Tel: 011 967 2151

Cell: 072 041 7819

Fax: 011 963 0473

Fax: 086 218 4686

email: spartsc@web.co.za



261 & 262 Stanley Road, Pomona, Kempton Park, CNR of Stanley and High Road  
Monday – Friday 07:30 – 17:00, Saturday 08:00 – 13:00, Certain Public Holidays 08:00 – 12:30



# EASY H<sub>2</sub>O SOLUTIONS

## EASY WATER SOLUTIONS

### Convert Your Septic Tank Contents to Safe Irrigation Water

Install an Easy Water Waste Water Treatment Plant and RE-USE ALL YOUR WASTE WATER ~ grey, black or yellow

- Produces Clear and Earthy Smelling Water
- Safe for Your Grass or Plants
- Can be scaled to any size, from Household to Housing Estate
- Tested and Proven Design
- Disinfection Options Include Ozonation or Chlorination
- Meets Department of Water Affairs standards
- Supplied with All Manuals and Diagrams
- Maintenance - Just Check Power Supply Daily
- No Honeysucking Required
- Removes lime-scale

CE Certified (European Standards)

*For rural developments, schools, clinics, housing etc*



- Sewage Systems for Irrigation
- Designed by Professionals
- Satisfaction Guaranteed

## TURNING WASTE WATER INTO WINNING WATER

☎ Johan - 062 703 2738

✉ johan@easywatersolutions.co.za

🌐 www.easywatersolutions.co.za

**EASY WATER SOLUTIONS**



# Did you know GAUTENG SMALLHOLDER

is much more than what  
you see in this magazine?

**Our digital platforms offer:**

- Interesting articles
- Breaking news
- Useful discussions

**Plus!**

**Our NEW digital bulletin  
featuring special promos,  
quick-read articles  
& interactive adverts.**

**To keep up-to-date with us online,  
scan the codes below to subscribe  
via WhatsApp or email,  
and to follow us on Facebook.**

Subscribe on  
WhatsApp  
or email.



Follow us on  
Facebook.



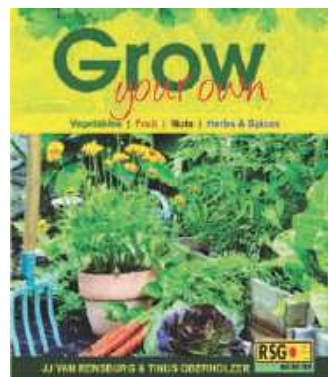
## BOOKSHELF

**A definitive guide to growing  
your own vegetables**

**W**e are all being constantly encouraged to grow vegetables ~ for ourselves and for those less fortunate and smallholders new to this rewarding work will welcome the sensible and practical advice in *Grow your Own* by Garden World's JJ van Rensburg and Tinus Oberholzer (Briza). Whether you want to grow vegetables, fruit, nuts or herbs and spices, and whether you want to try your hand at common crops or less usual ones, the book provides thorough guidelines for soil preparation, propagation, cultivation, harvest and storage.

A variety of growing methods are explored, from traditional to alternative. There are more than 300 colour photographs and sketches.

There is also extra information on cultivating in containers, choosing the most suitable plants for different spaces, deterring pests, companion planting, along with combatting diseases and other problems. The book is also available in Afrikaans. 🌿



[facebook.com/gautengsmallholder](https://facebook.com/gautengsmallholder)

# Fire beater

**FIGHT VELD FIRES EFFECTIVELY**  
**Get yours TODAY:**  
**It's the LAW!!**

1,8m long, thick but lightweight  
wooden handle keeps user away  
from smoke & flame

Unbreakable  
Fastening

Made from  
recycled  
rubber belting  
(not strips)

**Only R95,00**  
**cash & collect**  
**Trade enquiries welcome**

**Solid rubber sheet**  
**SMOTHERS flames**  
**FAST!**

Scrap belting also available

**To order call**  
**Derek Whittall**  
**078-706-6456**



# GAUTENG SMALLHOLDER

## CLASSIFIED ADVERTISEMENTS

Only R105 VAT inc for 50 words

All ads submitted are automatically uploaded free of charge to [www.sasfox.co.za](http://www.sasfox.co.za)

### CONDITIONS:

1. All submissions must be pre-paid before publication.
2. A Tax Invoice will be issued upon receipt of payment.
3. Deadline for placement and payment is the 15th of the month prior.
4. To submit your ad please email [graphics@gautengsmallholder.co.za](mailto:graphics@gautengsmallholder.co.za) and we will send you our bank details for EFT or cash deposit.

Classified advertisements in this section cost R105 VAT included for up to 50 words. To place your advertisement in the next edition call 011 979 5088 for our bank details or email [gautengsmallholder@gmail.com](mailto:gautengsmallholder@gmail.com)

### MISCELLANEOUS

**Stop thieves:** Outdoor wireless alarms for houses, cottages, outbuildings. 4 outdoor wireless sensors, main control panel, 2 remotes, siren, battery etc. R2 950. Installed in Jhb or DIY. Also cut fence alarm. Contact Colin 079 180 2853.

### PLANTS & PRODUCE

**Fruit & nut trees.** Olive, peach nectarine, plum almond, apricot, walnut, prune, pomegranate, pecan nut, apple, cherry, pear, fig, quince, mulberry, lemon and grape vines. Vereeniging. Contact Douw 084 506 5125.

### FARMING REQUISITES

#### Fencing and fencing equipment.

Diamond mesh fencing: 1 large roll of 3m height, 1 small roll of 1.8m height and 2 other small mixed rolls. The small mixed rolls are slightly rusted. 7 crowbars, 3 bolt cutters, 7 picks, 4 shovels, fork, 9 security standards being a mix of mainly 1.8m and 2.4m height with a 400mm overhang. Price: R1 600 for everything. Call: 011 949 4048

### BEEKEEPING

**Used beekeeping equipment.** Suitable for a person starting a hobby. Manual honey extractor that fits 6 honey frames, 5 honey chambers, 4 brood chambers (need repairing in places), 1 medium sized smoker, 1 pair of large gloves, 1 large size white cotton suit, 1 round face protector veils. Price: R2 400 for everything. Call: 011 949 4048

### MACHINERY

**Used 40KVA Generator.** With Switchover and Diesel tank. NO BATTERY INCLUDED. Low Hours, +/- 120hrs, only used when Eskom was off. Reason for sale: Expansion of farm. Clean and maintained with services all done. Price: R60 000 or nearest cash offer. Delmas, Mpumalanga area. Call 066 204 0740.



[facebook.com/gautengsmallholder](https://facebook.com/gautengsmallholder)

**Fruit Trees**  
Olive, peach, nectarine, plum, almond, apricot, walnut, prune, pomegranate, pecan nut, apple, cherry pear, fig, quince, mulberry, lemon and grape vines.  
**Shade Trees**  
**Vrugtebome**  
Olyf, perske, kaal perskes, pruim, amandel, appelkoes, okkerneut, pruimedant, granaat, druive, pekanneut, appel, kersie, peer, vy, kwep, moerbe en suurlemoen.  
**Skadubome**  
Vereeniging  
Douw 084 506 5125

**Clovelly Poultry**  
  
**Broilers**  
• Day-old 1st grade cockerels  
• Old-fashioned Spring Chickens/soup chicken  
Ideal for free range.  
Also for reptiles, owls & birds of prey. R350/100  
Delmas  
083 393 0935

### Bekostigbare implemente geskik vir die klein boer

**SKRAPER** Lem is VERSTELBAAR  
  
• Nou TWEЕ groottes:  
1.5m en 1.8m wyd  
• Geskik vir klein trekkers  
**1.5m - R2 300**

**BOSSIEKAPPER**  
• Nou DRIЕ groottes:  
1.2m, 1.5m en 1.8m wyd  
• Sonder PTO  
  
**1.2m - R6 800**

**Pryse sluit BTW in**  
**072 153 8776**

**CAN'T FIND YOUR SMALLHOLDER? SUBSCRIBE! NEVER MISS A COPY**  
[gautengsmallholder.co.za/subscribe](http://gautengsmallholder.co.za/subscribe)

**GM Electronics**  
Security Suppliers (Pty) Ltd  
  
[chris@gmelectronics.co.za](mailto:chris@gmelectronics.co.za)  
2.24mm Heavy Galvanised Wire 50kg approx. 1 650m High Tensile Wire  
**SABS APPROVED R799,00**  
Contact Chris 082 619 2556

**It's Sheep Shearing Season!**  
**SHEEP SHEARING SERVICE**  
**SKAAP SKEER DIENS**  
  
**082 878 5623**  
**083 273 4267**  
**082 602 4462**

**Reliable, quality equestrian services**  
  
  
  
- Stable doors, windows & dividers  
- Tack room security doors, windows & ceilings  
- Fencing (paddocks, arenas, perimeter)  
- Painting  
- Maintenance & repairs (wood & steel)  
**Rohan EQUESTRIAN**  
**Francois**  
**084 519 0056**  
[manvanstaal@gmail.com](mailto:manvanstaal@gmail.com)

**Farm Fresh Bales**  
\* **Eragrostis**  
\* **Smuts Finger**  
\* **+/- 17kg each**  
  
**R50 Each**  
Free delivery within 50km from Fourways for orders of 100 bales  
Contact Shaun: 076 134 6534  
Email: [svnrockstar@gmail.com](mailto:svnrockstar@gmail.com)



# DIARY



**SPECIAL NOTE: THESE DATES ARE VALID AT THE TIME OF GOING TO PRESS. DUE TO THE REGULATIONS RELATED TO THE ONGOING COVID-19 CRISIS, SOME OF THESE DATES MAY CHANGE AND SOME VENUES MAY HAVE RESTRICTIONS OF THE NUMBER OF VISITORS. WE SUGGEST YOU CONTACT THE ORGANISERS BEFORE THE EVENT.**

**ATTENTION CRAFT MARKETS, CLUBS ETC:** If you would like details of your events included in the Diary, please fax or email your information to the Editor. For non-commercial enterprises this service is FREE.

**NOTE: FARMERS' & CRAFT MARKETS.** For a listing of REGULARLY HELD markets and fairs please see the separate section on page 39. Only markets that are held infrequently are now listed in this calendar section.

## Every Sunday

SA Lipizzaners weekly display at 11h00. SA Lipizzaner Centre, Dahlia Rd, Kyalami. Go to [www.lipizzaners.co.za](http://www.lipizzaners.co.za) / email [stallion@lipizzaners.co.za](mailto:stallion@lipizzaners.co.za) to book.

Cattle drive with City Slickers breakfast, Diamond X Cowboy Ranch, near Rayton.

Call Rudan on 082 410 3180 / visit <http://www.diamondx ranch.co.za>, R500 per person.

Mnandi Methodist Church, 09:00, Mnandi Centre, cnr Tulip and Short Streets, Jen 083 709 3235 or Gail 072 477 0708, a small community who worship together. We have a Youth and Children's church.

Premier Mine Presbyterian Church, Lower Oak Ave, Cullinan. Garden of Remembrance (Columbarium), 079 060 9990 or 012 734 1640, Worship and Sunday school. Holy Communion for all on the 1st Sunday of every month.

## Every Monday

Alcoholics Anonymous. 'Courage to Change' Group meeting, 19:30, NG Kerk, 8 Canadair Ave, Impala Park, Boksburg, call Warren 082 335 0049 or Tony 082 443 4425, if you want to drink –

that's your problem! If you want to stop – that's our problem! No fees; no dues; just concerned fellowship.

## 2020

### October

1: Full moon  
3: Mnandi Market, Die Windpomp Lapa, 86 Boundary Road, Mnandi. 09h00 – 15h00. Fresh produce, artisanal breads, hand made and homegrown goods, plants, herbs, succulents and more.  
10: Country Market, Larsen's Road, Muldersdrift. 08h00 – 14h00. Local sellers bringing you the freshest crops, food and crafts. Contact Heidi for more info on 071 566 5940.

11: Tree Owl Community Market at Brandmuller's Garden Pavilion, 5 Dave Nourse St, Unitas Park, Vereeniging. GPS: -26.627823, 27.927976. 09h00 – 14h30. Stalls with hand-crafted goods, home-bakes, olives, honey, food stalls, cash bar, tea garden, live music from 12h00. The market supports the feeding scheme at Laerskool Unitas, members of the public are asked to donate canned food towards this project. Follow us on Facebook: Acorns Coffee Shoppe. Enquiries: Michele 083 378 0715  
12-16: Introductory course in Poultry Production at ARC, Irene Campus. R3 200,00 excl transport and accommodation. Contact Mpho Makhanya, [makhanyam@arc.agric.za](mailto:makhanyam@arc.agric.za) or 012 672 9153.

12-16: Veld Management Course, Alut Training Farm, Modimolle, Limpopo. R5 450,00 per person, incl lunch, refreshments and book. This course aims to train on the practices needed to ensure good and sustainable veld/rangeland management and improving veld condition. All people directly or indirectly involved in veld and land management, or into advisory services, will benefit from this course. Veld management practices include farm planning, grazing management, fire management, control of unwanted plants and veld restoration. The course is accredited with AgriSETA. Course presented by Frits van Oudtshoorn. Contact courses@alut.co.za or SMS 071 866 1331.

13-15: Course on Artificial Insemination at ARC, Irene Campus. R2 500,00 excl

transport and accommodation. Contact Mpho Makhanya, [makhanyam@arc.agric.za](mailto:makhanyam@arc.agric.za) or 012 672 9153.

16: New moon

19-23: Meat Processing course at ARC, Irene Campus. R7 500,00 excl transport and accommodation. Contact Mpho Makhanya, [makhanyam@arc.agric.za](mailto:makhanyam@arc.agric.za) or 012 672 9153.

20-22: Dairy processing: Yoghurt and Maas course at ARC, Irene Campus. R3 500,00 excl transport and accommodation. Contact Mpho Makhanya, [makhanyam@arc.agric.za](mailto:makhanyam@arc.agric.za) or 012 672 9153.

24-6 Nov: Agapanthus Festival @ the Aloe Farm on the R104, Hartebeespoort. Call 071 162 6790.

27-29: Dairy processing: Cheese course at ARC, Irene Campus. R5 000,00 excl transport and accommodation. Contact Mpho Makhanya, [makhanyam@arc.agric.za](mailto:makhanyam@arc.agric.za) or 012 672 9153.

31: Full moon

## November

2-6: Introductory Course in Pig Production at ARC, Irene Campus. R3 000,00 excl transport and accommodation. Contact Mpho Makhanya, [makhanyam@arc.agric.za](mailto:makhanyam@arc.agric.za) or 012 672 9153.

7: Country Market, Larsen's Road, Muldersdrift. 08h00 – 14h00. Local sellers bringing you the freshest crops, food and crafts. Contact Heidi for more info on 071 566 5940.

7: Mnandi Market, Die Windpomp Lapa, 86 Boundary Road, Mnandi. Fresh produce, artisanal breads, hand made and homegrown goods, plants, herbs, succulents and more.

8: Tree Owl Community Market at Brandmuller's Garden Pavilion, 5 Dave Nourse St, Unitas Park, Vereeniging. GPS: -26.627823, 27.927976. 09h00 – 14h30. Stalls with hand-crafted goods, home-bakes, olives, honey, food stalls, cash bar, tea garden, live music from 12h00. The market supports the feeding scheme at Laerskool Unitas, members of the public are asked to donate canned food towards this project. Follow us on Facebook: Acorns Coffee Shoppe. Enquiries: Michele 083 378 0715

9-13: Introductory Course in Small Stock

Management at ARC, Irene Campus. R3 200,00 excl transport and accommodation. Contact Mpho Makhanya, [makhanyam@arc.agric.za](mailto:makhanyam@arc.agric.za) or 012 672 9153.

15: New moon

23-27: Introductory Course in Beef Cattle Management at ARC, Irene Campus. R3 200,00 excl transport and accommodation. Contact Mpho Makhanya, [makhanyam@arc.agric.za](mailto:makhanyam@arc.agric.za) or 012 672 9153.

30: Full moon

## December

3-5: Sakeliga KragDag Ekspo 2020. Besoekers: + 21 000. Ultstallers: + 450. Aangebied te Diamantvallei Landgoed, 20km Oos van Pretoria. Grootste alternatiewe energie en selfstandigheidskso in Suid-Afrika. Vanaf 2019 ook met 'n eie landbou afdeling. Kontak Sone 087 231 1644 of [sone@kragdag.co.za](mailto:sone@kragdag.co.za).

5: Country Market, Larsen's Road, Muldersdrift. 08h00 – 14h00. Local sellers bringing you the freshest crops, food and crafts. Contact Heidi for more info on 071 566 5940.

13: Tree Owl Community Market at Brandmuller's Garden Pavilion, 5 Dave Nourse St, Unitas Park, Vereeniging. GPS: -26.627823, 27.927976. 09h00 – 14h30. Stalls with hand-crafted goods, home-bakes, olives, honey, food stalls, cash bar, tea garden, live music from 12h00. The market supports the feeding scheme at Laerskool Unitas, members of the public are asked to donate canned food towards this project. Follow us on Facebook: Acorns Coffee Shoppe. Enquiries: Michele 083 378 0715

14: New moon

16: Day of Reconciliation

21: Summer Solstice

25: Christmas Day

26: Day of Goodwill (Boxing Day)

30: Full moon

## QUALITY TOOLS

BRANCHES COUNTRYWIDE

# Adendorff

machinery mart

**R5595**  
INCL VAT

MULTI PURPOSE  
STANDING HEAT BAND  
SAW & GRINDER  
(WSAWMF-001)

50MM CLEAN WATER  
PUMP (MPUMPS-552)

**R2995**  
INCL VAT

105 PIECE  
PROFESSIONAL  
TOOL KIT WITH  
METAL TOOL BOX  
(TT00LB-105)

**R1295**  
INCL VAT

230MM PROFESSIONAL  
ANGLE GRINDER  
(2200W) (SGRIND-230)

**R2995**  
INCL VAT

PROFESSIONAL D.C MODEL  
200 AMP INVERTER ARC  
WELDER (EWELOD-200)

**R2795**  
INCL VAT

[www.adendorff.co.za](http://www.adendorff.co.za)

ALL PRICES INCL. 15% VAT. PRICES VALID UNTIL 17 SEPTEMBER 2020, THEREAFTER SUBJECT TO CHANGE WITHOUT PRIOR NOTIFICATION. IMAGES FOR DISPLAY PURPOSES ONLY. MODELS MAY DIFFER. PUBLISHED STOCK MAY NOT BE AVAILABLE AT ALL STORES AND IS SUBJECT TO STOCK AVAILABILITY. QUANTITIES ARE LIMITED. TERMS AND CONDITIONS APPLY.



# Regular Gauteng Farmers' Food Markets

This is a listing **ONLY** of markets held weekly. Markets held less frequently (eg 1st Saturday of each month) are listed in the **DIARY** section of the magazine and we urge readers to check each month for dates and events of interest.  
 If you know of farmers' food markets that are not listed here, please email us the contact details of the organisers, and details of the market. Only **FOOD** markets are included.  
 If you know of markets in this list that have **CLOSED** please inform us so that we can delete incorrect or outdated information.  
 We invite you to tell us of your experiences when visiting these markets so that we can better inform our readers. Were they as advertised? Was the produce on sale plentiful, well-priced, well-presented and fresh? Email your comments to [gautengsmallholder@gmail.com](mailto:gautengsmallholder@gmail.com)  
**SPECIAL NOTE:** Due to regulations related to the ongoing Covid-19 crisis, some of these markets may have restrictions on numbers of visitors.

DAY	WHAT	WHEN	WHERE	CONTACT	WHAT TO EXPECT
<b>Thursday</b>					
Every Thursday	Bryanston Organic & Natural Market	09h00 – 15h00	40 Culross Road, Bryanston (off Main Road)	011 706 3671 <a href="mailto:enquiries@bryanstonorganicmarket.co.za">enquiries@bryanstonorganicmarket.co.za</a>	Quality hand crafted goods, unique art and fresh organic and naturally grown produce.
<b>Saturday</b>					
Every Saturday	Pretoria Boeremark	04h30 – 09h30	Moreleta Street entrance, Krige Street ext, Silverton	012 804 8031 or 079 987 1025	Fresh produce, traditional bazaar treats like jaffles, kailings with pap & boerewors rolls.
	The Hazel Food Market	08h00 – 14h00	Greenlyn Village Centre, Cor Thomas Edison & Mackenzie St, Menlo Park, Pretoria	078 593 7716	Fresh produce straight from the producer, coffee, eats on sale.
	Waenhuiskrans Plaas / Farmers	08h00 – 13h00	Cor of Veda & Enkeldoorn Ave Market opposite Montana Traders and next to Kollonade Centre	Marius 084 505 3393 or office 012 567 6076 to book a stall	Stalls: Food, arts and crafts, fresh produce, eggs, chicken, meat, fruit & veg, kiosk, Maders pies, coffee.
	Glenfresh Farmers Market Midrand	08h00 – 12h30	30 Olifantsfontein Rd (opposite RMM Builders), Glen Austin (Cor Allan & Olifantsfontein Rds)	Stefan: 082 829 0185 <a href="mailto:market@glenfresh.co.za">market@glenfresh.co.za</a>	Local naturally grown produce, hand crafted goods, home baked treats, raw honey, biltong.
	Bryanston Organic & Natural Market	09h00 – 15h00	40 Culross Road, Bryanston (off Main Road)	011 706 3671 <a href="mailto:enquiries@bryanstonorganicmarket.co.za">enquiries@bryanstonorganicmarket.co.za</a>	Quality hand crafted goods, unique art and fresh organic and naturally grown produce.
	Niche Community Market	09h00 – 14h00	Walkerville Showgrounds	071 521 6547	Fresh produce, crafter's market, food court, craft beer, play area, pet friendly.
	Midrand Circles Market	09h00 – 14h00	118 Allan Road, Glen Austin	Margaret 079 394 5054	Freshly locally grown produce, raw honey, indigenous flowers & trees, food stalls, fresh meat stalls, cheese, eggs, coffee, books, gallery, and paint your own ceramics.
	Pretoria Noord Boeremark	08h00 – 14h00	Hillside Golf Club, Rachel de Beer Street, Nina Park.	Githea: 081 304 2070	Baked goods, traditional pap & kaaings, vetkoek, pancakes, jewelry, plants, fresh meat, cheese, woodwork, art, live music.
	Fourways Farmers Market (New venue)	08h00 – 16h00	Taroko Farm, Modderfontein Reserve, Norfolk Lane.	010 534 6622 (Mon-Fri) <a href="http://www.ffmarket.co.za">www.ffmarket.co.za</a>	Farm fresh produce, organic produce, food stalls, baked goods, live music.
<b>Sunday</b>					
Every Sunday	Waterfall Estate Farmers Market (Will open when more than 50 visitors are allowed)	09h00 – 15h00	Waterfall Estate, Midrand	064 759 6154	Fresh produce, pickles, preserves and home industry & craft, food, etc. Enquire about stall prices.
	Fourways Farmers Market (New venue)	08h00 – 16h00	Taroko Farm, Modderfontein Reserve, Norfolk Lane.	010 534 6622 (Mon-Fri) <a href="http://www.ffmarket.co.za">www.ffmarket.co.za</a>	Farm fresh produce, organic produce, food stalls, baked goods, live music.
	Vaalbank Country Market	10h00 – 15h00	Kakiebos on the R515 near Rayton	081 271 2300	Wide variety of community stalls and even art classes!



## Easyhatch

**Industrial and hobby incubators**  
**Parrot brooders**

*Broiler chicks available weekly!!*



[www.easyhatch.co.za](http://www.easyhatch.co.za)  
016 004 0142  
079 893 6383  
(Vanderbijlpark)





## F SERIES PARTS F100 & F250



**CRAIGARY ENTERPRISES CC**  
99 7th Ave, Edenvale  
T: 011 609 3631  
F: 011 609 3693  
E: [craigary@global.co.za](mailto:craigary@global.co.za)



Having difficulty finding a copy of

**SUBSCRIBE**

via one of these three options and we will send it monthly

**GAUTENG**

**SMALLHOLDER**

**MAGAZINE**

at your local store?



**WhatsApp**  
 Send a WhatsApp message with your name and "WhatsApp Subscription" to 076 176 7392. Then save that number as a contact on your phone. You'll receive a PDF of the magazine, for free.



**Post**  
 For R210 a year you will receive 11 editions of the magazine posted to you. Email us with your name, phone number and postal address. Only R210 for 11 editions. [graphics@gautengsmallholder.co.za](mailto:graphics@gautengsmallholder.co.za)



**Email**  
 Send an email with your name and "Email Subscription" to [graphics@gautengsmallholder.co.za](mailto:graphics@gautengsmallholder.co.za). You'll receive our monthly newsletter and a link to download a PDF of the magazine, for free.

# CLASSIFIED ADVERTISEMENTS

- Conditions:**

*Only R105 VAT incl for 50 words!*

  - Classified Advertisements published in the magazine cost R105 VAT included for a maximum of 50 words. Prepayment is essential. Contact us for our bank details to do your EFT deposit.
  - In addition to publication in the magazine Classified Advertisements will be moderated and uploaded to our sister website, [www.sasfox.co.za](http://www.sasfox.co.za) at no additional charge. They will remain on the site for a calendar month, unless requested otherwise by the advertiser.
  - Only ONE insertion per application, and one category per coupon.
  - Classified advertisements must be renewed monthly for repeat placements.
  - The Publisher reserves the right to edit or omit advertisements at his discretion.
  - It is the Advertiser's responsibility to ensure we have received the advert.
- SASFOX**  
 SA SMALL FARMERS  
 ONLINE EXCHANGE

USE THE COUPON BELOW FOR CLASSIFIED ADS in the magazine and on [www.sasfox.co.za](http://www.sasfox.co.za)

1 WORD (BLOCK CAPITALS) PER SPACE, PLEASE


Tel:

FOR ENQUIRIES AND OUR BANK DETAILS TEL 011 979 5088

**Send your Classified Advertisements to us:**  
 BY FAX: 086 602 3882  
 BY POST: Box 14648, Bredell 1623  
 BY EMAIL: [graphics@gautengsmallholder.co.za](mailto:graphics@gautengsmallholder.co.za)  
 BY HAND: 370 da Costa Dr, Bredell, Kempton Park



# Meet Usain Bolt, the tortoise

**T**rundling up a fence-line in one of my fields earlier this year I spotted a boulder. Nothing unusual there, because we use boulders to block off the bottoms of our fences so that small dogs (ours) can't squeeze under and disappear. What caught my eye, therefore, was not the boulder itself, but the fact that it was moving.

By the time I'd returned to the house, and called my better half to have a look with me, the boulder had moved. Disappeared. So imagine our joy when, the following day when walking in our fields some distance from my first sighting, we came across the boulder again, crossing the path slowly in front of us. Say hullo to Bolt (as in Usain, geddit?) the tortoise.

An indigenous Leopard tortoise, Bolt was of some size, and therefore of some vintage. From whence he came we'll never know, and how he (or she, we'll never know either) managed to broach our fences we'll also never know. Nor where he was headed, although it seemed he wanted to go north.

Because I was about to start cutting grass in my fields with my slasher we deemed it sensible to move Bolt out of harm's way and we thus removed him to a disused chicken run, now well grown with lush kikuyu.

Here, after he had come out of his shell, he chumbled around the fence line chewing grass, concentrating particularly on the northern border. "Go north, young man," was clearly not only David Livingston's call. It's built into the tortoise's DNA, too.

What does one do with a tortoise? Not a lot, it seems.

For every time we boasted to friends or family that we'd found a tortoise they'd want to see it, and out we would all troop to the chicken run. There to see nothing more than a tortoise-shaped boulder because the vibration of our feet would clearly cause him to retreat into his shell.

If that's the default response to human/tortoise interaction it's not very exciting. One can't after all, pet a boulder, unlike a puppy or a pony.

Plus, having lived on this plot for more than 30 years, we've only ever seen a tortoise once before. Shortly after we moved to the plot a gardener unearthed a hibernating tortoise while preparing a flower bed. Sadly, he unearthed the tortoise with a the business end of a garden fork. End of tortoise. Since that day our plot has been devoid of tortoises big and small, and it has never been a tortoise thoroughfare.

Besides, I hold the view that the place for wild animals, reptiles, insects and birds is in the wild, not cooped up in a cage.

I have, for example, never understood some people's obsession with keeping snakes and lizards in large fish tanks. Why? To prove how brave they are around snakes or reptiles? It makes no sense to me. You can't after all, hug a snake, because if it's a poisonous one it will more than likely reward you with a bite or a gob of venom in your eye, and if it's a python or a boa constrictor, it will quite likely hug you back.

And even snakes ~ and tortoises ~ must become lonely without company.

So it was decided that Bolt should be moved on, northwards, because that seemed to be where he was headed.

Now fortunately the Rietvlei Nature Reserve outside Pretoria is, roughly, north of our plot, although not within walking distance for a tortoise, even one as determined and fast-moving (yeah, right) as Bolt.

And also fortunately, the wardens at Rietvlei are happy to accept healthy indigenous wild animals, reptiles etc because they, too, believe that wild animals belong in the wild.

What's more, if one presents them with an alien or exotic animal such as a tortoise (which may have wandered into one's property or been bought from a dealer), they know what to do to house it ethically and safely, but not in their reserve.

There is, of course, a thriving roadside and underground trade in all manner of fauna and flora, particularly tortoises, which are plundered from the wild to fuel the trade, and many people support these dealers because they feel sorry for the creatures.

Truth is, however, that by buying from an unethical roadside dealer all one is doing is encouraging them to plunder further.

And, there are regulations and permit requirements to keeping wild animals, tortoises included, at home.

And so Bolt was delivered to Rietvlei, given a once-over for evidence of good health and released into the reserve, there to find a mate, reproduce and, hopefully, live his days like a tortoise should.





**SMART ARS**  
ABNORMAL ROOFING SOLUTIONS (PTY) LTD

Roof Sheetting / Coils / LSF Structures / Insulation / Accessories / Manufacture / Supply / Install



**LIGHT WEIGHT TRUSS**

6m	R1,590.00
9m	R1,802.00
12m	R2,067.00

excl VAT and Delivery



**TEMPORARY HOUSING**

3.6x4.8	R28,938.00
3.6x3.6	R25,440.00

excl VAT and delivery

DIY-UTI STORES - PRICES FROM		
6 x 6 x 2.5 (LxBxH)	R 19 506.37	
6 x 9 x 2.5	R 24 104.50	
9 x 9 x 2.5	R 34 383.28	
9 x 12 x 2.5	R 40 183.19	
12 x 12 x 2.5	R 52 293.39	
ALL PRIME MATERIALS		
ROOF SHEETING	GALV	CHROMADEK
IBR/CORRUGATED/ WIDESPAN	R66.78/m	R85.86/m

PRICES EXCL. VAT AND DELIVERY

Call: 083 293 1043      email: louie@abnormalroofing.co.za



# JOHN DEERE

## Spring special

REVET FARM STORE



**MENS BUSH SHIRT  
2 POCKET VENT SAFARI**



**LADIES BUSH SHIRT  
2 POCKET STONE**



**MENS SHIRT  
BACK VENT  
OLIVE**  
from  
**R495<sup>00</sup>**



**MENS SHIRT  
CAMEL**  
from  
**R495<sup>00</sup>**



**MENS SHIRT  
BACK VENT  
OLIVE STONE**  
from  
**R495<sup>00</sup>**



**LADIES SHIRT  
2X2 STRIPE**  
from  
**R495<sup>00</sup>**

**ALL BUTTON  
SHIRTS FROM  
R495<sup>00</sup>**

John Deere Ground Force takes outdoor play excitement to the next level! Kids will delight in listening to the FM radio while driving the large John Deere Ground Force Tractor with its extra large stake-side detachable trailer; 3 to 7 year olds will delight in loading up the trailer and delivering their treasures.



## John Deere 12 Volt Ground Force Tractor & Trailer Set **R5999.00**

- 2-speeds plus reverse with 2nd gear lockout for beginners
- Farm tractor wheels provide traction on grass, dirt, gravel or pavement
- Large aggressive hood
- Adjustable seat with flip up armrests
- Detachable, extra large stake-side trailer
- Working FM radio with electronic tuning
- 12-volt rechargeable battery and charger included



## DON'T MISS OUT!

**ADDRESS:** 270 Ninth Road, Bredell, Kempton Park  
**PHONE:** +27 (11) 965 1292 | Cell 083 680 7746  
**MAIL:** sanet@revet.co.za

### Trading Hours:

**Monday - Friday** 09h00 to 17h00

**Saturday** 08h30 to 13h00

**Sunday** Closed



**We courier nationwide**

Prices valid while stocks last

Send email to [sanet@revet.co.za](mailto:sanet@revet.co.za) to receive a catalogue