

GAUTENG SMALLHOLDER

JULY 2017
HOW TO MAKE YOUR PLOT PROFITABLE

Now also available
~ as published ~
ONLINE... go to
www.sasmallholder.co.za

**Free magazine:
Take one!**

 Find us on
Facebook

facebook.com/gautengsmallholder

Win with

 **Hadeco**

 **SAKATA**

 **MayFord**

See Competition on Page 20



IN THIS EDITION:
#SAFoodCrisis: Join the fight
Where is Gauteng's dirtiest air?
Plan your work this winter
Agroecology explained ... and much more...

More than 20 000 copies* distributed monthly throughout Gauteng

*including online readers at www.sasmallholder.co.za



Wastewater Treatment Systems

- Does your septic tank smell?
- Has your French drain failed? ... Again?
- Are you polluting the neighbour's borehole water?
- Are you compliant with the National Water Act?
- Would you really like to reuse your water?

Each Scarab system...

- Is designed to comply with the National Water Act
- Is simple to install, maintain and operate
- Requires no chemicals (Ozone optional)
- Uses minimal power
- Is almost maintenance free
- Produces clear and odourless water
- Is modular to suit new loadings
- Is sized from the single house to large estate



The Scarab system is:

- Featured in the Dept of Water Affairs best practices guideline policy
- Listed as a top 100 SA company for its technology in 2004, 2005 and 2006, and for receiving the Bio2Biz award in 2006.
- A preferred supplier to the Dept of Health - Rural Clinics (KZN)
- Featured on SABC3 Business Update



As Featured on



gakzn

Groundwater Association of KwaZulu Natal

Johan 082 535 4576

e-mail: johan@scarabsa.co.za

Now in Bela Bela (Warmbaths)

Tel: 014 736 3463 Fax: 086 763 8267 Cell: 082 441 9549

e-mail: scarabwater@gmail.com

Web: www.scarabsa.co.za

Have you hugged your water today?



Cleaning Products for your Home

A wide variety of household products, from:

- Dishwashing liquid to wash & wax for cars
- Kills odours in septic tanks
- Feeds septic tanks & soakaways with enzymes
- Septic tank friendly
- Cost-effective



Free Delivery in Pretoria & JHB



**Tel: 014 736 3463
014 736 2279**

e-mail: info@scarabsa.co.za

Web: www.scarabsa.co.za

Environmentally friendly and bio-degradable

PUBLISHED BY

Bowford Publications (Pty) Ltd
Established 1985

(Reg No 2004/019727/07)

PO Box 14648, Bredell 1623

Tel: 011 979-5088

or 076 176-7392

Fax: 086 602-3882

website:

www.sasmallholder.co.za



facebook.com/gautengsmallholder

PUBLISHER & EDITOR

Pete Bower

email: editor@gautengsmallholder.com

RESEARCH EDITOR

Vanessa Bower

email: vanessa.bower@gmail.com

GRAPHIC DESIGNER

Mark Hageman

email: graphics@gautengsmallholder.com

ADVERTISEMENT SALES

Pete Bower

email: sales@gautengsmallholder.com

ADVERTISING RATES

(All Rates Full Colour, incl VAT)

Full Page - R7480

Half Page - R4620

Quarter P - R2570

1/8 page - R1360

Smaller sizes: R104 per col cm

(Minimum size - 4 col cm)

(Black only: colour rate less 20%)

Booking discounts

Payment lumpsum in advance.

Not applicable to SuperSmall.

3 insertions - less 10%

6 insertions - less 15%

(other payment and discount options are available)

Circulation

More than 19 000 copies* distributed free through outlets in the Agricultural Smallholding settlements of Gauteng and adjoining provinces.

* excluding on-line readers.

By Mail

To receive the *Smallholder* by mail

subscribe for only R210 per year.

See coupon in this edition.

Online

<http://www.sasmallholder.co.za>

Copyright

Title and contents protected by copyright. No part of this publication may be reproduced or stored in any form whatsoever without the prior written permission of the publisher.

Disclaimer

While every care is taken to ensure the accuracy of the information in this journal, neither the Editor nor the Publisher can be held responsible for damages or consequences of any errors or omissions. The Publisher does not stand warranty for the performance of any article or service mentioned in this journal, whether in an advertisement or elsewhere.

FRONT COVER

As good as the original: a depiction of a national botanical garden ~ part of the Sanbi Kirstenbosch Chelsea Flower Show exhibit, reconstructed at Garden World in Muldersdrift.

COMMENT, by Pete Bower

#SAFoodCrisis: Get this



It is well-understood that South Africa has many pressing problems, but you would be wrong to think that Jacob Zuma, the Guptas, corruption or the parlous state of the economy are the biggest and most pressing that we face. And you would be equally wrong if you thought it was our dreadful education system, crime, unemployment or the threat of fracking in the Karroo.

For while it is true that Jacob Zuma and his cronies are conspiring to turn this country into the biggest banana republic Africa has ever seen, there is an issue so big, so historic, so complex and so all-encompassing that, if we as active citizens don't do our bit to rectify it, the crisis will lead to the death of thousands and the collapse of the country. Literally.

We're referring to what we will call the **food crisis**, for want of a better name.

While it's not really a crisis in that it hasn't suddenly arisen, but has in fact been a part of South African life for many decades, it is without a doubt slowly getting worse and will one day develop into a full-blown crisis of epic proportions.

Because we can't go on like we are. For example, the billions disbursed each month to Social Grant recipients constitute not only the recipients' only real income, and thus the only wherewithal that they have with which to buy food, but also represents a sizeable chunk of the country's gross national product ~ its cash-flow, if you like.

But there are now more social grant recipients in South Africa than there are people in formal employment, and the number of grant recipients is more than three times the number of individual taxpayers in the country. Does that sound like a sensible, sustainable situation? We don't think so.

But what food crisis are we talking about, you may ask? There is food on shop shelves, the recent good rains have seen to it that there will be a heartening surplus of maize (the price of which has halved as a result) and starvation is really not the problem it was a few decades ago. So what's the problem?

Well, the first problem is that there's not just one problem, but a myriad of interrelated issues affecting farmers, farm workers and consumers ~ you and me ~ alike.

The simplest and most visible way to see this issue is to ask yourself the question, "why does my food shopping bill seem higher every time I visit the supermarket?" But if you were a farm worker you may ask "why are my wages so low?" and if you were a farmer you'd be asking "why am I paid so little for my produce?"

We believe that too few people are aware of, and angry about, the problems in the food industry. We also believe that the politicians have abrogated their responsibilities in relation to the Constitution, choosing rather to take cover behind the convenient phrase "food security." And we believe that the time has come for us as citizens to take matters into our own hands and force the necessary changes to take place. But we can only do that if we are fully informed as to the nature and scale of the problem.

As a result, the *Smallholder* will, over the next few months, be publishing a series of articles with a common theme of #SAFoodCrisis. These will draw on a recently-published book by agri-economist and activist Dr Tracy Ledger entitled *An Empty Plate* which, if you are interested, we urge you to read (order it from Loot or Takealot.com), and various discussion papers and government reports.

Our articles will look at seemingly unrelated issues such as inequality, unemployment and wages, the parlous state of the farming industry, land restitution and why so many new Black farmers fail, the food value chain and agricultural marketing, corporate greed, nutrition and nutrition education, public health and social security, the futility of charitable works and grow-your-own efforts, government policy and the wrong assumptions upon which many of these policies are founded, and even economic theory and philosophy.

Why are we going to all this effort on this one subject? For two reasons. Firstly because problems in the food sector affect all of us, rich and poor, black and white, as consumers and citizens. And secondly because the development of a thriving smallholder farmer sector (of which by our very name we are part) will not succeed unless various aspects of agricultural policy are changed.

Thus, for us, it's become a personal fight, and we have become increasingly angry and alarmed and the way we are heading as a country. And for you, too, it should become personal because you are being fleeced each time you buy food and although you don't know it yet, there is going to come a time when there are insufficient farmers left to produce the food you consume unless you become angry and alarmed, too.

• ALL PRICES INCLUDE VAT •



Petrol & Diesel Cultivators

from R7 995
*VAT Included



Accessories Included:

- 1 x Hose Reel
- 1 x Spray Lance
- 1 x Swivel Fitting
- 20m High Pressure Hose
- Suction & Return Hose.

**Power Sprayer /
Fire Fighter**
R4 999 *VAT Included

Diesel Engines



5HP
6HP
11HP
20HP
*11HP includes
electric starter

from R4 650
*VAT Included

Petrol Engines



5,5HP
6,5HP
9HP
13HP
16HP
20HP
Horizontal Shaft
6.5hp reduction box

from R1 695
*VAT Included

LAWNMOWER ENGINES

6.5hp to 20hp
available
from R2 250 incl. VAT



Brushcutters
43cc

R1 595
*VAT Included



Chainsaw
45cc

R1 695
*VAT Included



320kg **Mini
Dumper**

R17 995
*VAT Included



Hammermill
6.5hp petrol engine

Water Pumps



Inlet/Outlet
Hose available

Trash Pumps:

R4 250
*VAT Included

Chemical Pumps:

R3 950
*VAT Included
Standard Pumps:
Petrol & Diesel

from R2 500
*VAT Included

Pedestal-mounted Pulley Pumps

2" and 3"



from R1 295
*VAT Included

Generators



Battery
Included

Petrol & Diesel
from R7 995
*VAT Included

FULL SPARES BACKUP & SUPPORT

Pictures for illustrative purposes only.
Actual products may differ. E&OE.

BENONI:
011 422 6354
95 Amphill Avenue

ALL PRICES VAT INCLUSIVE
www.magnumpower.co.za

• ALL PRICES INCLUDE VAT •

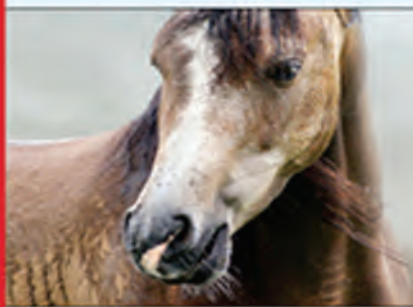
POWER SPRAYERS • CULTIVATORS • GENERATORS • DIESEL ENGINES • FIREFIGHTERS • HAMMERMILLS • FIREFIGHTERS • DIESEL ENGINES • WATER PUMPS • PETROL ENGINES

POWER SPRAYERS • CULTIVATORS • GENERATORS • HAMMERMILLS • FIREFIGHTERS • DIESEL ENGINES • WATER PUMPS • PETROL ENGINES

WINTER SPECIALS

1 July - 31 July 2017

ALZU
VOERE-FEEDS
MIDRAND



THE BEST VALUE FOR MONEY
HORSE FEED ON THE MARKET
Alzu 12% Maize Free

**WARM UP WITH OUR
HOT SPECIALS**

**YELLOW
MAIZE 40KG**

R99.00



Address: Corner of Plantation & Summit Road, Blue Hills, Midrand | Tel: 082 827 9361 | Email: midrand@alzu.co.za | www.alzu.co.za

ALZU VOERE-FEEDS



TRADING HOURS

Mon - Fri: 08:00 - 17:00
Sat: 08:00 - 13:00

TEL: 011 822-8503
011 964 1323
FAX: 086 630-2616
sales@gas2u.co.za
www.gas2u.co.za



S26° 0.180 E28° 24.807
14 Magic Avenue
Bapsfontein
(near BP Garage)

WINTER SPECIALS

Collection only



LPG



Air
Products
Industrial
Gases

Small cylinders

3kg	= R60.00
4.5kg	= R90.00
5kg	= R100.00
7kg	= R140.00

Large cylinders

9kg	= R145.00
19kg	= R300.00
48kg	= R780.00

All prices include Vat

Oxygen 13.6kg	= R199.00
Acetylene 8.6kg	= R995.00
Argon 16.9kg	= R470.00
Coogar 82(17.1kg), 84(17.8kg), 89(17kg), 98(16.9kg)	= R440.00
Magmix 17.1kg	= R440.00
Carbon Dioxide	
Dip tube 31.6kg	= R430.00

All other Air Products
gas-range available in store.

All prices include Vat

Phone in store for delivery prices.

ACCREDITED DISTRIBUTOR



Every day is pensioners
day - Less 10% (Gas Only)

AFRIBORE

Experts on the East Rand for:

A COMPLETE WATER SERVICE

Borehole Drilling
Pump Installation
Cleaning & Yield Testing

082 945-7423

083 656-8385

afribore@icon.co.za



AMBERLINK HENS

6 week old Pullets

(All vaccinations done to 6 weeks, including MS Vaxsafe)

17 week old Point of Lay Hens

(All vaccinations done)

AVAILABLE MONTHLY

FARM FRESH

EGGS

016 371-2154

082 903-6595



Rig-Tech

steel structures

AGRICULTURAL • INDUSTRIAL • COMMERCIAL

DESIGN, SUPPLY & ERECTION OF STEEL STRUCTURES

- Top quality structures fabricated to professional engineering specifications.
- We get the job done by the agreed time.
- You pay what's on the quotation.

For advice or a quote, contact us:
Call: 033 346 0804 • Mike 082 806 4241
or Theuns 082 216 3650
email: sales@rigtech.co.za
website: www.rigtech.co.za



Gauteng's dirtiest air is ... where?

Given all the industries and machines around us that belch smoke into our air, we Gautengers live in a remarkably dirty environment. And here's just HOW dirty.

Take a guess ... (and we'll bet you get it wrong)

The most recent World Health Organization update to the Global Urban Ambient Air Pollution Database came

up with a surprise in terms of the area in South Africa with the dirtiest air. The database covers over 3 000 cities across

the world, measuring fine particle matter (both PM_{2.5} and PM₁₀ microns) in micrograms per cubic metre (mg/m³).

And in the latest figures, Hartbeespoort has the unenviable honour of having the dirtiest air.

The region's air quality is adversely affected by its proximity to Tshwane and Johannesburg, as well as to mining operations in the Brits area. Tshwane is second in South Africa and Johannes-

Continued on page 6

MAILBAG

ID these 'LGBs' (little green birds)

Sir ~ Are any of your readers able to identify the small flock of green birds that has been seen in the Bredell area recently? When I first saw them I thought they might be Rosy-faced Lovebirds, but when they flew into our garden again I noticed that they have long tails like a parakeet.

According to the Invasive Species South Africa website (www.invasives.org.za/news-

[previews/item/898-rose-ringed-parakeet-psittacula-krameri](http://www.invasives.org.za/news-previews/item/898-rose-ringed-parakeet-psittacula-krameri)), the Rose-ringed Parakeet is the most invasive parrot species.

I couldn't get a photo as they

blend in so well with the leaves on the trees. Has anyone else seen them in the area?

Rosemary D Bredell

The Editor welcomes your letters, comments and opinions, but reserves the right to edit and shorten as necessary.

Senders' names and addresses must be included.

Afrikaans letters will be translated.

Post mail to: Letters, PO Box 14648,

Bredell 1623 or fax 086 602-3882

or e-mail editor@gautengsmallholder.co.za



BREDELL GAS & HARDWARE

Hardware **Winter**
Dry Cleaning **Warm**
TV & Video Repairs **Gas**

OPEN ON SUNDAYS 09:00-12:00

Bredell Shopping Centre
3rd Ave, Bredell Tel 011 396-1662

Hornbill TRAILERS

JULY SPECIALS

3m x 1,5m utility trailer, 900kg axle, 13" wheels	R11 500	Many more models, always in stock. We deliver
3m x 1,5m utility trailer, 1,6t axle, 14" wheels	R14 800	
3,5m x 1,8m x 1,8m double axle cattle trailer, braked	R34 800	
4m x 1,8m double axle utility trailer, braked	R31 500	
5m x 2m double axle car trailer, braked	R33 500	

SABS APPROVED and registered body builder

www.hornbilltrailers.co.za Vanderbijlpark
Hendry 083 276 4669

Lift Trailer – Mossiewa
marius@mrhangar.co.za

- Convert your tractor into a bakkie!!
- No punctures
- Easy loading
- No jack-knifing, tight turning (ideal for stables, feedlots, nurseries etc)
- Capacity 500kg - 1 500kg

SA-built

Marius
072 726 3920

SHEEP DAY

30 AUGUST 2017

R100 per person

Venue: Zomerlust

Innocation and de-worming of Sheep
Planting and management of Pastures
Optimal Feeding & Management

zoetis **CWI** **Mamie** **VEEPLAAS** **BARENBRUG**

BOOKING IS ESSENTIAL - BOOK BY 25 AUGUST
016 366 1398 • 083 676 8607 • 082 907 6519

HI PERFORMANCE FEEDS
Where Animal Performance Counts

NEWS

From page 5

burg is third. Other areas in Gauteng in the top ten in South Africa are Vereeniging, Sebokeng and Diepkloof. According to the National Environment Management: Air Quality Act, 2004, it is a legal requirement that provinces and municipalities must compile and implement air quality management plans. The challenges in Gauteng are great. Take Ekurhuleni as an example:

Why Gauteng's air is so polluted, and what you can do to make your own air cleaner

□ it has 120 informal settlements of which 60% have no electricity, so they are coal, paraffin and wood dependent;
□ it has more than 20 townships, which are seasonal coal users;

□ it lists more than eight other categories of air pollution sources, including heavy industry and mine dumps;
□ there are three national roads and a number of regional roads carrying about

1,2 million vehicles per day on average, and, □ it boasts the biggest airport in Africa, which contributes to air pollution as well. However, cleaner air also starts with each one of us as individuals. Smallholders think that because we live in semi-rural areas we are not

Continued on page 8

Bird 'flu outbreak near Gauteng could spread

With poultry imports from Zimbabwe halted after an outbreak of the highly contagious H5N8 strain of avian influenza (bird 'flu) there were reports as we went to press in the last week of June of an outbreak at a broiler farm in southern Mpumalanga near the Gauteng border. According to sources 5 000 chickens had died of the

disease, while the remaining 19 000 at the farm were culled, and the property placed under quarantine. Bird 'flu is a fatal viral infection. It is usually transmitted by wild birds coming into contact with domestic flocks and keepers of free range chickens are therefore urged to keep a close watch on their stock, which will inevitably come into contact with pigeons,

hadedas, guinea fowl and other free flying species as they roam around during the course of their day. While battery-reared and farmed poultry are less likely to come into contact with wild birds, and are thus protected to some extent from infection, an outbreak in the intensive conditions of a poultry farm will spread rapidly through the entire flock.

Maize Feed & Seed
x Dog Food **AWI-PLUS**
HI PERFORMANCE FEEDS AGENT
25 Limpopo St
Three Rivers, Vereeniging
016 423 5767

Dog food • Montego • Supreme
Bow Wow • Cat food • Poultry feed
Bird seed • Pet accessories
Reptile accessories

SEPTIC TANK PROBLEMS?
WE HAVE THE PERFECT SOLUTION

RECYCLABLE **ORGANIC** **ECO-FRIENDLY**

NO MORE MONTHLY COSTS ON HONEY-SUCKERS

RECYCLE WATER SAFELY FOR IRRIGATION
LIFETIME GUARANTEE ON TANKS
3 x TANKS BUILT UNDERGROUND
2 x PIPE SYSTEMS
ALL MATERIALS USED ARE SABS APPROVED
NO MORE BAD SMELLS
INSTALLING SINCE 1980's

Hydrogenic Digester Systems

For further information contact:
Pedro 083 444 1025
pedro@atms.co.za
www.atms.co.za

AFRI-CA
IMPLEMENTS
BOTHAVILLE

Tough & Dependable Machines
Ideal for a Smallholder

Mealie Thresher
Petrol or diesel driven
Belt drive
Cap 2-2,5 tons/hr
350 litres (approx)
Rotary Hand Pump
Locakble toolbox
High-speed chassis

Tipping Trailer
6 ton capacity
Hydraulic rear tip

Diesel Tank Trailer

Used Tractors
Also Available

Call Pieter
056 515 4380
piet7@africaimplements.co.za
Visit our website: africaimplements.co.za

COUNTRY STYLE FENCING
TREATED POST & RAIL FENCING

- Push-fit
- No nails or screws
- No Maintenance
- Very quick
- Very strong
- **CCA TREATED**

GUM POLES For Cattle, Horses & Gardens

POLE & TIMBER SUPPLIERS
TEL 011 640 7975 ~ 072 113-4637
www.poleandtimber.co.za

CONVENIENT ONE-STOP COUNTRY SHOPPING

GROENVOER

Feed • Vet Products • Saddlery • Gumpoles • Buckets • Bins • Brooms • Chicken feeders & drinkers
Fodder • Eragrostis • Lucerne • Oat hay • Teff • Country Markets • Groom Training • Farm stall delights

Quality Animal Feeds



Since 1970



I Love Horses Day • 15 July



GROENVOER Premium Quality Animal Feed

- Always Available, Always Freshly Mixed
- Formulated for SA conditions
- Organic preservatives
- Direct from factory to feed room

Horse Feed is our Speciality

JULY 2017 SPECIALS!

Slow Feeder Hay Nets

R160
Save R15.00



210lt Metal Drum
(Rat proof, great for winter)

R290
Save R70.00



Plastic Spray Bottle
1lt

R15
Save R10.00



Racumin Wax Blocks
85g

R35
Save R15.00



Basic Winter Blankets
(Grey inner, canvas outer)

R590
Save R100.00



Large Ostrich Bone
(A special winter treat. Safe bone to feed as it does not splinter.)

R25
Save R7.00



Epsom Salts
5kg

(Laxative effect helps prevent colic, especially when added to feed in winter)

R70
Save R35.00



PROUDLY PRESENTING THE
SA GRASS ROLL SAVER!

- Recoup cost within months
- Comfortably holds 1.2m grass roll
- Only needs two people for easy loading
- Long Lasting
- Money saving
- Galvanised

SA PATENT
NO. 2012/05600
SA REGISTERED DESIGN
NO. A2012/01178 & F2012/01177
Infringers will be Prosecuted



"Our 3 SA Grass Roll Savers are wonderful. They are huge labour savers, and I know exactly how many days one roll of hay will last!"

AMANDA MORRIS - MANZINI • SWAZILAND

Stockists of:



ORDER TODAY!

Speak to: Cathy, Irene,
Jenny & Philenie

011 314 1211 082 545 9277
011 314 1212 076 451 7771
011 314 1156 076 451 7799

email: groenvoer@mweb.co.za
web: www.groenvoer.co.za

Address: Olifantsfontein Rd (R562), Midrand, Gauteng, SA



BLANKET WASHING & SADDLERY REPAIRS

Quick, thorough
& Inexpensive

All prices Vat inclusive E&OE - Generator power - No outages

NEWS

Kids' play at Garden World Festival

A part from the recreation of the Sanbi Kirstenbosh Chelsea exhibit at Garden World's Spring Festival each year, and the professionally-designed show gardens, there are also a number of gardens designed by schools and youth organisations throughout Gauteng.

Aimed at encouraging young people to develop their green fingers, these are often

delightfully whimsical, while also being of a very high standard.

Thus, while a visit to the Festival show gardens can be an inspiration to the jaded adult gardener looking for fresh ideas for his or her outdoor areas, one's children can also be inspired and given ideas as to what they can grow and do in the little patches allocated to them at home or school, hopefully

with a view of nurturing their interest into a lifelong passion for plants, flowers and the beauty of nature.

Garden World's Festival opens on 28 July and runs through till 3 September. It includes a number of events planned for various venues in the Garden



Pupils from The King's School get down and dirty preparing their school exhibit for the Garden World Spring Festival opening later this month

World complex, dates, times and details of which are all published in the Diary section of this magazine.

Moreover, Garden World is organising a competition for readers, the lucky winner of which will receive a hamper of seeds and bulbs especially put together with the needs of smallholders in mind, including a packet of veld grass reclamation seed to enable one to rehabilitate a paddock or field with good quality grazing for one's livestock.

Find the competition elsewhere in this edition, answer a simple question and stand in line to win.

For more information: Garden World, tel 011 957-2046/7

AIR QUALITY

From page 6

affected and that there is not much we can do to affect the bigger picture, but it requires a mind-set that acknowledges that we can all do our bit every day to live more environmentally consciously.

One of the biggest sources of air pollution is vehicles. But we live outside town, and we have to go further to work, to school and to shop. With more planning and combining our errands, we can take fewer trips, as well as using the most fuel efficient route. We can adopt more careful driving habits to reduce our car's emissions, such as accelerating gradually, using cruise control on the highway and obeying the speed limit. Keeping the car

Continued on page 9



Manufacturers of Water, Chemical, Transport, Septic Tanks and Silos

<p>Cape Sales: Tel: +27 (0)22 433 2342/2937 Fax: +27 (0)22 433 4724 E-mail: rotocape@mweb.co.za</p>	<p>Gauteng Sales: Tel: +27 (0)12 376 1070/2 Cell: +27 (0)71 689 4216 Fax: +27 (0)86 297 2504 E-mail: roto@mweb.co.za PO Box 1210, Ifafi 0260</p>	<p>KZN Sales: Tel: +27 (0)39 685 7243 Fax: +27 (0)39 685 0292 E-mail: kznsales@roto.co.za</p>
--	---	--

www.rototank.co.za **086 000 TANK (8265)**



Trade in your old tank for a NEW one!

Vertical tanks from 500€ to 40 000€



Horizontal tanks from 500€ to 8 000€



Free delivery

Modular plastic silos ranging from 8m³ to 24m³



Plastic septic tanks ranging from 600€ to 12 500€ (2-55 persons)

WINNING FEATURES

- Delivery time 7 to 10 working days
- Light, easy to install ~ no cranes required
- Rust and dent resistant, maintenance free
- Resistant to most hazardous chemicals
- Choice of various colours
- Tank stands available: 1,5m, 3m, 4,5m, 6m, 9m & 12m
- Warranty



Dreaming of a quiet winter? Forget it

Fields cut and grass baled: check. Firebreaks made: check.

Firefighting equipment unpacked, checked and available for use: check. Lawnmower serviced and prepared for winter storage: check. Frost cloth placed over vulnerable plants in the garden: check. Winter vegetables planted: check. Horse blankets washed, repaired and in use: check. So, as the days become a parade of endless sunshine and blue skies and the nights turn frosty, you can relax beside a nice warm fire with a bowl of hearty stew and a glass of good red wine. Well, no. You can't.

Here are the jobs that should keep you busy during the cold months

Because now is the time to do all the jobs around your plot that you don't ever have time for in summer, such as repairing fences and painting gates and posts.

And the endless days of blue skies and sunshine with almost no rain make it easy and convenient to plan and schedule all the outside maintenance necessary.

Repairing a fence could mean nothing more than tightening the odd loose wire, or replacing hopelessly corroded wires with new strands. More often than not, however, it will mean resetting posts that have pulled out of the

Continued on page 11

AIR QUALITY

From page 8

tuned, replacing the car's air filter and keeping tyres properly inflated will also help.

When shopping for your next car look for the most efficient, lowest polluting model or even choose either a non-polluting car or zero emission vehicle.

Have a look at the department of environment's *Handy Guide to Green Cars* (www.environment.gov.za/sites/default/files/docs/publications/greencar_handyguide.) Be more conscious of products that you use in your home or at work. Select products that are water-based or have low amounts of volatile organic compounds (VOCs); use water-based paints and paint with a brush,

not a sprayer; store solvents in air-tight containers; use a push or electric lawn mower. Use safer products, such as bicarbonate of soda instead of harsh chemical cleaners. Instead of using chemical-filled air fresheners, use essential oils, herbs and flowers to make your home smell nice. Limit the fires on your smallholding. Adhere to veld fire prevention protocols.

Thatching Experts

LAPAS
THATCH EXTENSIONS
ENCLOSURES
HOUSES
RE-THATCH
PAVING

Building Contractor

NEW BUILDINGS
ADDITIONS
GARDEN WALLS
GRANNY FLATS
COTTAGES
BRAAIS





DMThatch and Build

LIGHTNING & CONDUCTORS

FREE QUOTATIONS IN PRETORIA

082 451 3259 • 076 777 2944 • dmthatch.build@vodamail.co.za

Find us on Facebook

www.dmthatchbuild.co.za

PLEYSIER INCUBATORS

TRADING HOURS
MONDAY - FRIDAY
08:00 - 13:00
14:00 - 17:00

+27 11 659 8041/2

 <p>48 Egg R2 900 Automatic turning</p>	 <p>56 Egg R3 200 Automatic turning</p>
 <p>96 Egg incubator R4 500</p>	 <p>88 Egg manual turning incubator R1 200</p>

ON SALE!!
88 Egg manual turning incubator
Special price

CONTACT PLEYSIER INCUBATORS 011 659 8041 or 011 659 8042 • CELL: 082 936 5843
Order on our website www.pleysier.co.za or email frank@pleysier.co.za
• 2006/169666/23 • VAT: 4290232802 • SARS NO: 2022 1406 For Export •

Servicing Gauteng for 15 years with

FODDER

Eragrostis 1.2m ~ R350.00
Teff 1.2m ~ R450.00
Poor Man's Lucerne/Smutsfinger mix 1.2m ~ R350.00

ALL PRICES INCLUDE DELIVERY WITHIN 100km (20 round bales per load)

Square bales available on order

Call Daniel 083 415 8968
or Jonathan 083 548 2272 (Bredell depot)



Nigel area Klippan Farm

Delivery

for small and large quantities

Also: 8 Ton flatbed truck for hire
Call Daniel 083 415 8968

Disclaimer: Galvanising contains zinc. Customers use galvanised products for livestock and humans entirely at their own risk.

From page 9

ground or been pushed skew. This inevitably means loosening all the wiring from the post, cleaning out the post hole, repositioning the post and its associated stay, resetting the post and stay with new concrete and allowing it to set firm, before refastening and tensioning the wires. There is, sadly, no easier way of doing it. It is worth noting that the reason posts pull out of the ground is often related to the fact that they were set too shallow in the first place, or that the stay was fastened too low down the post, allowing it to swivel up and over the stay when higher strands are tensioned.

And, while on the subject of tensioning wires and fixing broken wires, a handy new tool is available, that is far superior to the traditional chain and ratchet tensioners usually available in South

Maintenance to electric fences should also be done at this time of year

Africa. You can learn more about it elsewhere in this edition.

Maintenance to electric fences should also be done at this time of year, which if nothing else should comprise checking the conductivity of the various strands, cleaning any leaves, twigs or grass that may have fallen on to the strands and cleaning away cobwebs that may have developed. The isolators along each strand should also be washed clean of dust, debris and bird droppings.

Electric fence strands, if properly installed, will have tensioners or turnbuckles built in to allow loose strands to be tightened.

Fence post and gate painting also has its unique art and is not simply a case of slapping a coat of fresh paint on top of

the old.

Loose paint should be removed by chipping and scraping, a time-consuming process to be sure, but one that, if the post is properly painted, should not need doing again for at least two years.

Any rust that has developed should, next, be treated with a rust remover.

Then a primer should be applied and, once dry, a top coat in your chosen colour.

And here's a tip. Rather than doing all the chipping, then all the priming, then all the top coating (sometimes days apart depending on the size of your property and the amount of work involved), rather do each post or gate (or no more than a couple, ie as many as you can complete in a day) from start to finish, before

moving on to the next. That's because it's a bit pointless to allow freshly chipped or de-rusted bare metal to lie exposed to the elements, only to become rusted again, before you return some days later to prime it. And, also, modern paint formulations have better adhesion capabilities when coats are not allowed to dry out and harden too completely. So adhering to the paint manufacturer's drying times will result in a better bond between coats and a longer life.

Continued on page 12

HOSE, FITTINGS & TUBING

from **WATEX** - the quality hose manufacturer.

Ask for it at your nearest Hardware Store or Co-operative - buy South African.

Garden Hose

- SABS 12 Year Warranty Hose
- 8 Year Warranty Colourful Hose
- 6 Year Warranty Hose



Industrial Tubing

- CLEAR TUBING
- FUEL HOSE
- AIR & WATER HOSE
- Manufactured from virgin raw material
- Available in thin and thick wall
- Good flexibility
- High resistance to gases and chemicals
- High pressure applications: air & oil
- From 3mm - 32mm x 30m rolls.



Dragline

Outer is ribbed which offers excellent abrasion resistance. Burst pressure from 2500m - 5000 Kpa



Gas Hose

- Manufactured from virgin raw material
- Operating temperature -0° C to +50° C
- Complies with SANS 1156-2: 2010
- Pre-packed OR available in rolls



Reinforced Hosing (Pty) Ltd

Manufacturer & Supplier of WATEX:

- Agricultural Dragline • SABS Mining Hose
- Clear Tubing • Garden Hose
- Prepacked Garden Hose Fittings



- www.watex.co.za
- 011 769 2600

5072 WATEX Cauleng Smallholder 12pg JAN17

PLANNING

From page 11

And while on the subject of painting, the quiet winter months, after the cutting, raking and baling has been done, but before the ploughing season starts, is a good time to repaint your implements. For a really professional job you will want to spray paint, but if it's simply a case of preserving them,

hand-painting will work as well. Wooden posts and beams, etc, will also benefit from a coating with a preservative such as creosote (if you don't mind the smell) or tanalith. With most of the land-work out of the way, and the ploughing season still a way off, now is also a good time to service your tractor. At the

bare minimum this should entail checking the fluid levels, and replacing or cleaning the air, fuel and oil filters. Every couple of years the gearbox/diff should be drained and refilled, regardless of how much or how little the tractor is used, because the oil absorbs moisture, rendering it opaque and causing possible damage. The same applies to the engine oil and radiator fluid, which should be replaced periodically even if the machine spends most of its time idle. Finally, on a smallholding tractor, one aspect that is often neglected is to ensure that wheel bearings and other moving parts are properly greased and lubricated. In a couple of months' time you will be hard at work pruning your fruit trees and roses, so a workshop task for this month can be to clean

and sharpen your pruning tools. The cold nights will have seen to it that you are heating all or parts of your house. Maybe this is done in the most ecologically sensible way, namely by burning old, dead timber. This, however, requires you to maintain a woodpile, so one of your tasks may be to cut up and split felled and fallen trees on your property. Any tree felling exercise results in a mound of scrub, some of which will make kindling for your nightly fire but most of which will simply be in an unsightly pile, which is firstly a fire hazard and secondly a wonderful hole to snakes and vermin. Another winter task, therefore, can be to run this stuff through a shredder, to make mulch for your spring and summer plantings.

TRACTOR MECH

Vaaljapie Specialist **Restoration of New & Old Tractors**

For all:

- Sales
- Spares
- Rebuilds
- Service & Repairs

of your:

- Tractors
- Slashers
- Implements
- Stationary Motors

Johan Bouwer **Martina Bouwer**
072 576 2392 **072 861 6980**
403 Bakenkloof Street Pretoria North 0182

AMANZI

Borehole Testing

- Borehole Yield & Constant Discharge Testing
- Borehole Testing SANS 10299
- Water Quality Testing SANS 241
- Borehole Pump Installations

Member of the Borehole Water Association of South Africa

Kevin: 084 538 4600
Email: kevin@rainsford.co.za
Quality Service Throughout Gauteng

Quality Irrigation Pipe @ BEST PRICES!!

Buy direct from our Factory

- ★ LDPE 12-50mm dia, Class 3 & 6
- ★ HDPE 12-90mm dia, Class 6 to 20
- ★ We do custom jobs to client's requirements
- ★ Made from recycled material ... environmentally-friendly
- ★ Dealers sought throughout Gauteng

*Leaky pipe?? Or effluents??
 We buy scrap polyethylene pipe
 Best prices paid!!
 Clean up your farm ...
 Recycle the waste!!*

DeltaPlast (Pty) Ltd
 LDPE and HDPE irrigation pipe manufacturers

Tel 016 455-3947
 3 Joubert St Ext
 Duncanville,
 Vereeniging

TRANSLUCENT

POLYCARBONATE SHEETING

Flat, Profiled & Multi-wall Polycarbonate Roof Sheeting

At Affordable Prices
SAVE ON ELECTRICITY
due to natural lighting

Now also available: Mythos Greenhouses
 248 x 185 x 216cm

DIY Skytiles **Translucent**
Lightweight
UV Protected

We also supply:
 Turbine ventilators
 Roof fasteners
 Butyl sealants
 DIY Skytiles

MASBIZ TRADING CC

Tel: 011 894 2873 / 079 882 2515
carolann@masbiz.co.za
192 Dr Vosloo Road, Bartlett, Boksburg
www.masbiz.co.za

FIRES

Sidewalk grass fires: Do you have recourse?

If your local authority fails to maintain the verges and a verge fire destroys your property you can sue

While you may have taken care to prepare your plot for the winter fire season, what happens if your local authority neglects to do the same to the verges that surround you, allowing the grass to remain uncut? And what happens if the said uncut verges catch fire, and that fire jumps your firebreak, burns out your field and, let's say, burns down your barn or, worse, your house?

For, the National Veld & Forest Fires Act is quite clear on this if a property owner (or occupier) neighbour should neglect to carry out his responsibilities with regard to fire prevention, and a fire spreads from his property to yours. If you have made "reasonable preparations" of firebreaks etc, and have taken "reasonable precautions" to prevent the fire from spreading, including the "reasonable" provision of equipment and personnel ~ in other words if you have done your bit in terms of the law ~ and a fire from a neighbour's land destroys your property, you have a very good chance of winning a claim against him.

But what happens if the negligent party is a municipality or a local authority? The good news is you have a claim against the authority in much the same way that you do against an individual. Leading environmental legal expert Douw Venter explains: "The pillars of our

law on delict stand on the omissions (failure) with regards to mandate of municipalities. Municipalities which fail to maintain their streets, for instance, are responsible for consequential damage and or injuries which can be related to the poor conditions of roads (potholes, etc).

"Municipalities who fail to properly treat their drinking water can be held responsible for disease related to such water. There are many examples.

"Municipalities are legally obliged to maintain their roads, sidewalks and parks and are responsible for consequential damage as a result of fire damage to property or lives.

"Where fire spreads from a sidewalk where the grass was not cut resulting in your house burning down, the municipality is, in terms of our law on delict, responsible for such loss.

"There is much case law confirming this."

However, Venter points out that the case would need to be fought in the High Court, and litigation is expensive, with no guarantee of a successful outcome.

Snake Catcher

Protect Guests, Family, Friends, Animals, Livestock



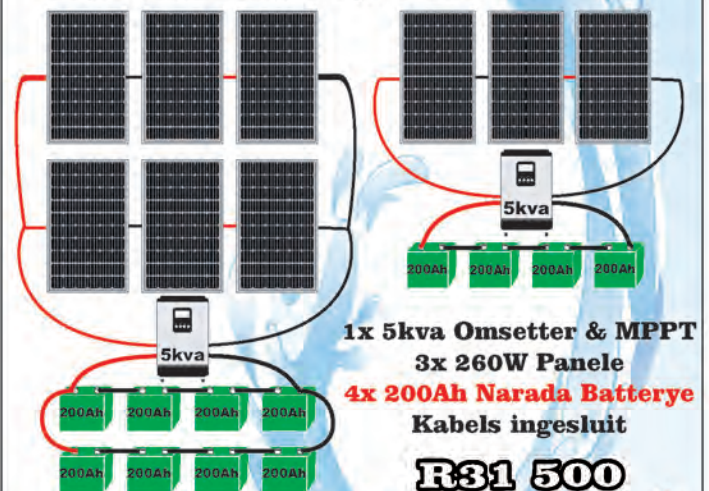
Only R 1295.00 & FREE Postage
Call or SMS Ralph: +27 825730710
Or email: SnakeAlert@Global.co.za



GRATIS VOERTENK, ELEMENT, TERMOSTAAT EN ANODE

120ℓ	Lae Druk	R4800
12 buise		
200ℓ	Lae Druk	R6800
20 buise		
260ℓ	Lae Druk	R7400
26 buise		
360ℓ	Lae Druk	R9400
36 buise		
260ℓ	Hoë Druk	R10900
26 buise		

Geyser installering kan gereël word teen R4000



1x 5kva Omsetter & MPPT
6x 260W Panele
8x 200Ah Narada Batterye
Kabels ingesluit

R50 000

Solank voorraad hou!

BTW ingesluit.
Pryse en spesifikasies
mag verander.



SONKRAG
SOLAR VERSPREIDERS

Tel.: 012 8191081. 0828825145

25°40' 761"S, 028°19' 547"E • sonkragsolar@gmail.com • www.sonkragsolar.co.za



**Kan halveer word vir
maklike vervoer. Laai
30 op n 1 ton bakkie.**



- ▶ Engineering works
- ▶ General Steel Fabrication
- ▶ Industrial Blasting & Painting
- ▶ Bending, Rolling, Punching
- ▶ Machining, Milling



Hooi Ringe

R 1320-00 Uitsluitende VAT

Afslag op groot maat aankope.

**Aflewering (vir 5 of meer hooi ringe) : Binne 50 KM Radius – Gratis aflewering
Verder as 50 KM Radius – R 6-00 per km**

**Kontak: Pieter: 083 661 9682
Kantoor: 082 657 5830**

**Daleen: 083 516 9019
Tinus : 083 884 4100**

**26°21'47.7"S 28°40'05.3"E
-26.363255, 28.668140**



**DELMAS
CRANE HIRE**

www.delmascranehire.co.za

**-083 650 7403 Elize -082 604 1665 Johan
-083 884 4100 Tinus -082 896 4104 Hannes
-079 505 7464 Samuel -elize@aheadpro.co.za**

Equipment:

- Mobile cranes up to 150 Ton
- TLB's
- Transport 8 Ton to 58 Ton
- Front End loaders
- Skid steer loaders
- Tele handlers



How to make winter firewood

With Gauteng nights ranging from cold, to bitterly cold householders' thoughts turn to how best to heat their dwellings, and smallholders are no exception ... although we have an advantage over city dwellers in this regard in that many of us have a plentiful supply of free firewood, as a result of tree pruning and felling activities on our land.

However, getting a tree or limb from

felling stage to firewood takes a certain amount of effort, and requires certain tools. The result, though, a neat and plentiful woodpile, is a pleasure to behold and gives one a feeling of great satisfaction.

Here are some pointers as to how best to make a woodpile for winter with the least effort.

Unless you are a sucker for punishment and want to spend hours sweating over a bowsaw, you will need a chainsaw, probably with a couple of spare chains, but

definitely with the usual safety gear of helmet and face-screen, gloves, proper footwear and safety trousers. For cutting up firewood a small, lightweight unit with a 35-50cm cutting bar is adequate.

You will also need some means to split the resultant logs into manageable, burnable pieces ~ either a long-handled log splitting axe or a hydraulic or electric log splitter machine. The latter will become almost essential if you are producing a large quantity of firewood for, say,

a guest lodge or a number of cottages.

If you use a hand axe you will also need a sturdy cutting block. This

can be the sturdiest part of the tree trunk, cut level top and bottom, to about thigh height, and anchored into the ground with metal poles to stop it from moving around. Make it thigh height so that you aren't bending down each time to pick up and position the bit you're splitting, and yet not too high that the full force of your stroke with the axe is not maximised.

Now assuming you have felled a dead tree, the most efficient way of preparing it for the fire is to cut it once, where it fell, into grate size lengths, then move these little bits of wood to near your wood pile, and split them there. You will therefore spend longer cutting up wood "in situ" where the tree fell, but you will thus avoid

Continued on page 16



Logsplitters: Left ~ long-handled splitter from Husqvarna. Right ~ small 5-ton electric splitter can be used vertically or horizontally

Easyhatch Incubators

Manufacturer of fully automatic industrial and hobby Incubators



Rugare Bird Farm

Breeders of
- Exotic chickens
- Exotic ducks and swans



www.easyhatch.co.za info@easyhatch.co.za

Call us on 011 051 9386 / 079 893 6383

GPS: S26° 41' 12.3" E27° 40' 26.2" (Vanderbijlpark)



HERONBRIDGE
Animal Feed & Agri Supply

Valdor Centre, Beyers Naude Drive, Muldersdrift
heronbridgeproduce@gmail.com

011 957 5964
074 421 4802

**Animal Feed, Fodder, Bedding,
Pet Food, Pharmaceuticals,
Fertilizers ~ and great service!**

July Specials Great Deals

- Teff Mini-Round Bales - R160-00 - superb quality
- Pine Shavings - R23-00 - big black bag
- Bird Seed Bells - R42-00
- Fresh Milk - Jams - Konfy - Farmhouse Delights



Quality Lucerne Always in Stock

SEPTIC TANK PUMPING



0861 11 33 24

**Authorised Permit Holders
in Ekurhuleni**

082 300 3996

HEATING

From page 15

double cutting and handling of longer logs into shorter grate sized pieces.

Making firewood can be a one-man task. Having an assistant to handle the pieces and do the stacking is helpful, but requires the wielder of the implement ~ chainsaw, log splitter and axe ~ to be much more vigilant as to where he is pointing the saw, axe etc, and where the assistant is.

A felled tree produces a remarkable quantity of scrub ~ twigs, leaves etc, and material so small that it does not warrant burning. This should be trimmed away from the firewood-sized branches and stacked separately to be shredded or chipped later. The resulting pile of chips or shredded material can either be composted or, better still, used as mulch on your garden and vegetable beds.



A neat woodpile fashioned out of used pallets

Experience with your particular fireplace ~ its size and how it draws air ~ will tell you how well it burns

wood of a particular size. Remember that the principal of combustion is that the temperature of the fuel must reach combustion point for it to burn. Thus, if the fire is too small, or its ability to draw air so weak, that it cannot heat a log sufficiently to combustion temperature you will find yourself constantly adding paper, or blowing, in an attempt to keep the fire burning. Or you will simply finish up with unburnt logs in your fireplace.

Conversely, splitting the wood into tiny pieces is also counter-productive: firstly there is the extra effort involved in the splitting, and secondly the wood will simply burn faster, thus using more fuel than necessary each night.

Finally, you should try to gauge how much wood you will need through the winter and prepare only that amount ~ a difficult task, granted, but a good thing to do because wood cut and exposed is more likely to suffer from the attention of wood borers in the summer than logs with bark still intact. By the same token, if you can store your wood in a neat pile under cover you are less likely to be faced with a pile of rotten, dusty, maggoty matter well on its way to becoming compost next season, after having been rained upon during the summer.

And a neatly stacked woodpile is less unsightly, and takes up less space, than a pile of stuff simply hurled together.



HYDRO SOLUTIONS

WATER AND SOLAR TECHNOLOGIES

Submersible Dirty Water Pump Special !

Designed to handle dirty water and screened sewage.

- Ideal for septic tank systems.
- Full Stainless steel body and impeller.
- Maximum Flow: 350 l/min!
- Maximum Head: 12m

Contact us for precise advise and great service.

NOW ONLY!
R2999 Incl.



Solar Borehole Set Special!

Harness the power of the sun.

- Set includes Pump, Motor, Control box, Solar Panels and Level Sensors.
- Maximum Head: 50m
- Maximum Flow: 1200 l/h
- 300Watt panel Included

NOW ONLY!
R11990 Incl.



Borehole: Complete 3" Set Special !

- Set Includes: Motor, Pump, Control Box, Cable, Rope, Baseplate, 3 x Pipe fittings.
- Maximum Head: 64 Meters.
- Maximum Flow: 2700 litre / hour.
- 0.37KW Motor.
- Optimum Flow: 1800 l/h @ 60m

Free delivery straight to your site.
(Gauteng Only)

NOW ONLY!
R3999 Incl.

VISIT OUR FACTORY STORE IN PTA EAST

012 807 3256 sales@hydropumps.co.za

www.hydropumps.co.za

Agroecology is the way to go for smallholders

There are many different approaches to the growing of food and managing our agricultural resources. Some of the methods include sustainable farming, permaculture, biodynamic methods, biological farming and organic agriculture.

A philosophy that is being put forward as being appropriate for emerging farmers and smallholders is agroecology.

The Merriam-Webster Dictionary defines agroecology as "an ecological approach to agriculture that views agricultural areas as ecosystems and is concerned with the ecological impact of agricultural practices".

Ecology is the study of the relationships between plants, animals, people, and their environment, and, most

An approach to farming that brings together various techniques and practices in a sustainable, environmentally-friendly way

importantly, the balance amongst these relationships. Agroecologists talk of the practice of sustainable agriculture (often based on local indigenous knowledge), as well as being associated with a growing movement of people globally advocating for a different and sustainable way to consider agriculture and its relationship with society.

Five core principles are associated with agroecology as the applied science of making agriculture more sustainable. These can be summarised as:

☐ Balance and optimise

nutrient flows within the system by enhancing the recycling of biomass. (Biomass refers to the total quantity or weight of organisms in a given area or volume or it can refer to organic matter used as a fuel.)

☐ Secure favourable soil conditions for plant growth by managing soil organic matter and raising the activity of soil organisms.

☐ Minimise resource losses that arise from the flow of energy, water or air by designing relatively closed systems.

☐ Promote the functional biodiversity of the system

(species that work together to make the system more healthy and productive), including within and between species, above and below ground, and in time and space (on farms and in the wider landscape).

☐ Enhance the beneficial biological interactions and synergisms between system components that can provide key ecological processes and services within the system.

In practice this means that the agro-ecosystem will comprise complex "polycultures" that mix crops, trees and other beneficial plants and animals in the system; makes use of successions of plants and crop rotations that increase diversity between seasons and over the years; uses cover crops and creates micro-

Continued on page 19



**STRUKTUURSTAAL
SPECIALISTE**
Marius 072 726 3920
marius@mrhangar.co.za



Oop Stoorkamers



Geslote Stoorkamers

Tenk staanders
vanaf
1 000! tot
20 000!
beskikbaar
1,2m tot 12m

**Handelsnavrae
welkom**

Ek kan enige van ons ontwerpe
aanpas om u spesifieke behoeftes
te pas. Gebruik my kennis tot U
voordeel.

Sprayers for Firefighting, Cleaning etc



Left:
120 litre
220V
trolley
sprayer



220 litre
skid-mounted sprayer



2 500 litre firefighting
trailer

now STOCKING

Husqvarna
Equipment. Spares etc

MULTI

**UPGRADE TO A
HONDA**

Spares for ALL models of Consumables
Honda machines always available!
Honda
Water Pumps,
2" & 3" models, &
Honda Brushcutters

1 GRANT ST, NEW STATE AREAS, SPRINGS
TEL: 011 817-3044/84, 082 444-8952
FAX: 011 817-3063
www.mfpafrica.com
e-mail: mulpower@netactive.co.za

FIRE & POWER

**IBR and Corrugated
Roof Sheeting**

Special on 0.5mm, Full Hard, Galvanised Steel

**Sheeting available in Galvanised,
Chromadek and Pro Lok in all profiles**

Phone us for a quote today!
*Minimum orders apply

IBCRR INDUSTRIAL

10 Bentonite Street, Alrode, Alberton

Marius
082 487 9412
marius@ibcorr.co.za

FIREFIGHTING SOLUTIONS

JULY 2017

Water Pumps

RGHP 50
Petrol • 50mm • 52m • 36000L/h
High pressure



Incl VAT
R 3418.86

R2999

RGHP 40-2
Petrol • 40-2 • 77.5m • 135000L/h



Incl VAT
R 6496.86

R5699

RDHP 50
Diesel • 50mm • 52m • 36000L/h
High pressure • Electric start



Incl VAT
R 6838.86

R5999

16L Sprayer

SHS16L Y
16L
Stainless steel lance



Incl VAT R 397.90

R349

Power Sprayer

PS3WZ-36L-300
4 Stroke, 6.5Hp motor
300L tank
Return agitator valve



Incl VAT R1598.86

R13999

Bakkie Frame

Incl VAT R 4558.86

R3999



Brushcutter

BCCG430- B Style

Included:
Grass blade
Nylon head
Toolkit



Incl VAT R 2278.86

R1999

Chainsaw



GL5200
52cc

Incl VAT R 1537.90

R1349

Shredder

SS1002
6.5HP
76mm branch
handling capacity



Incl VAT R 11398.86

R9999

Earth Auger

EAG4300
DIY Series
43cc



FREE
200mm bit included

Incl VAT R 2278.86

R1999

Booster Set

GAUTOJET-100S
0.75kw • 45M • 50L/min



Incl VAT R 1708.86

R1499

Trash Pump

GTP80



Incl VAT R 3988.86

R3499

Generators

RGG7150E
6.3kW • Electric start
Battery excluded

6.3kW



Incl VAT R 6838.86

R5999

Water Filters

3-STAGE WATER FILTERS

HWF-20B2
20"
Double Big Blue
(PP+CTO)



Incl VAT R 4466.47

R3917.96

HWF-20B3
20"
Triple Big Blue
(PP+CTO+PP)



Incl VAT R 6218.11

R5452.49

Ts&Cs apply. While stock lasts. Actual product may vary from pictures. E&EO permitted. Valid for July 2017



RED
RHINO
PRODUCTS

CALL FOR YOUR
NEAREST STOCKIST

Tel 011 668 1923/4
010 591 0432
Fax 011 668 1925
sales@klbengineering.com
info@klbengineering.com
www.redrhino.co.za

Bronkhorstspuit	013 932 0524
JHB North	011 893 0281
JHB West	011 660 5509
PTA CBD	012 323 2053
PTA East	012 804 5273
PTA North	012 546 4496
PTA West	081 736 4096
Ermelo	017 819 2804
Vaal	016 455 2556

TERMINOLOGY

From page 17

climates within the system to optimise soil fertility and increase synergies (Altieri 2005).

These approaches involve the maintenance or introduction of agricultural biodiversity (diversity of crops, livestock, agroforestry, fish, pollinators, insects, soil biota and other components that occur in and around production systems) to achieve the desired results in production and sustainability. In practical terms, agroecologists practise:

❑ **Crop rotation:** Temporal diversity incorporated into cropping systems, providing crop nutrients and breaking the life cycles of several insect pests, diseases and weed life cycles.

❑ **Polycultures:** Complex cropping systems in which two or more crop species are planted close together, which results in competition or complementation, thereby enhancing yields.

❑ **Agroforestry systems:** An agricultural system in which trees are grown together with annual crops and/or animals, resulting in enhanced complementary relations between components.

❑ **Cover crops:** The use of pure or mixed stands of legumes or other annual plant species under fruit trees for the purpose of improving soil fertility, enhancing biological control of pests and modifying the orchard microclimate.

❑ **Animal integration in agro-ecosystems,** which aids in achieving high biomass output and recycling.

All of the above diversified forms of agro-ecosystems maintain vegetative cover as an effective soil and water conserving measure, met through the use of no-till practices, mulch farming and use of cover crops and other appropriate methods. They also provide a regular supply

of organic matter through the addition of organic matter (manure, compost, and promotion of soil biotic activity). They enhance nutrient recycling mechanisms through the use of livestock systems based on legumes, etc and promote pest regulation through enhanced activity of biological control agents, achieved by introducing and/or conserving natural enemies and antagonists.

The concept of food sovereignty is particularly important in this method of agriculture. Agroecologists state: "Food sovereignty is the right of peoples to healthy and culturally appropriate food produced through ecologically sound and sustainable methods, and their right to define their own food and agriculture systems. It puts those who produce, distribute and consume food at the heart of food systems and policies, rather than the demands of markets and corporations. It defends the interests and inclusion of the next generation. It offers a strategy to resist and dismantle the current corporate trade and food regime, and directions for food, farming, pastoral and fisheries systems determined by local producers. Food sovereignty prioritises local and national economies and markets and empowers peasant and family farmer-driven agriculture, artisanal fishing, pastoralist-led grazing, and food production, distribution and consumption based on environmental, social and economic sustainability. Food sovereignty promotes transparent trade that guarantees just income to all peoples and the rights of consumers to control their food and nutrition." (From the Declaration of Nyéléni).

Borehole Drilling



Throughout Gauteng

- **50 years' experience**
- **Modern, powerful equipment**
- **Prompt, reliable service**
- **Best rates and advice**



AND: We can arrange your associated requirements, eg: borehole siting, pump installation, piping, electrical work, etc.

Lanseria Drilling

BOREHOLES - DRILLING & REPAIRS

076 727-6464

082 552-6071

011 957-2588

BEEKEEPING

A hobby you can do into old age

Beekeeping: welcome to this most fascinating farming occupation that starts in the back yard and extends far beyond just keeping bees, but also into the vast, wonderful and beautiful flora of our country and into the pollination of any number of crops imaginable. The beekeeper has all these features at his front door to enjoy. He becomes the friend of every farmer and a most sought after person when he has to remove troublesome bees from odd hidey-holes. In cases where he offers free pollination services to farmers, he is always "baie welkom."

Beekeeping is successful and most enjoyable when one, with some knowledge of bees, can work with confidence and determination. This is obtainable by working with and learning from an

Interested in beekeeping but don't know where to start? Here's some insight into this fascinating and vital pastime that can become a lucrative business, by Peter Clark, chairman of the Eastern Highveld Beekeepers' Association

experienced beekeeper. It is this "hands on" learning that cannot be attained from books or classroom lectures. As one meets successful established beekeepers, one will find that all of them were taught by an established beekeeper at the outset of their careers.

The craft is capital intensive and a very costly outlay to build up to an operating outfit. However it is an undertaking where one can start small and grow at one's own pace of development. Mostly the work is outdoors, often into night hours, so one has to be healthy and fit and not be troubled by back ailments. Hard work that can be hard on the back is the

order of the day if one is to succeed.

One becomes attuned to the demands and requirements of the bees and to discipline oneself to these situations spells great success.

Good planning is essential, as goals must be set and adhered to, as one needs to know what will be happening twelve months hence, and then through every month as the year progresses.

One learns to observe the various plants that flower throughout the year and what crops will be flowering, and how one is going to get the honey from those flowers in those days. Therefore one has to keep proper and accurate records of honey flows and

the amount of honey obtained from each flow. To meet these requirements the bees have to be kept up to strength at all times.

Beekeepers are loners and because they have succeeded at a great cost of time and money to obtain good sites for their apiaries, they are very reluctant to disclose their sites and any details of their operations.

The value of the bee industry cannot be assessed. By some it is stated as a R20 billion industry and by others far more.

That's because one needs to consider the value of foreign revenue brought in by the fruit export industry, the fresh juice industry, the cooking oil and the use thereof in the food preparation industry. Then add to that the pollination of crops for the fruit and nut production industries, for

Continued on page 21

Win!
with...
Garden World



**Answer a simple question
And visit Garden World's Spring Festival
to stand in line to WIN a hamper of
VELD GRASS SEED AND BULBS FROM
MayFord Seeds & Hadeco
worth R500!!**

TO ENTER:
Answer the following question:
**After which Struggle Icon is the
National Botanical Garden
on the West Rand named?**

email your answer to
nursery@gardenworld.co.za
BEFORE NOON on 24 Aug 2017

**The winner will be notified on
25 Aug 2017**



MayFord



NB: The winner must visit Garden World's Spring Festival
between 25 Aug 2017 and 3 Sep 2017 to claim the prize.



From page 20

the development of seed for the sunflower, onion, lucerne, all melons, pumpkin and related crops, for without the production of seeds these crops would simply not exist. The list is never ending, and all of this work is done by bees provided by beekeepers. Therefore the role played by beekeepers is most valuable to our country.

Our African bees are strong health-wise and are able to resist many diseases that exist in other countries.

And, as a result of bad farming practices, such as spraying and not giving due regard to the importance of bees, many northern hemisphere countries have lost their bee populations and are completely out of bees. Our bees swarm off prolifically and losses are easily replaced, but not so in those countries. There is a move afoot, but still in early stages of develop-

South Africans consume 5 000 tons of honey annually, but our beekeepers produce only 3 000 tons. ... opportunity knocks?

ment, to replace bees in those countries with bees transported from South Africa. This will be something for our industry to consider in the not too distant future.

The latest figures at 2016 were that our country required 5 000 tons of honey for domestic consumption. Our own beekeepers produced about 3 000 tons, resulting in a shortfall of 2 000 tons, which was imported. It has been projected that our consumption will double by 2020 and it is up to the future beekeeper fraternity to meet this requirement or else South Africa will need to import even more honey. For South Africa should be able to produce all our own requirements, like Australia and New Zealand, and especially so as

beekeeping is the ideal activity for a small farmer. Switzerland has more than 20 000 hobbyist beekeepers who produce all that country's needs, so why can't we? We have the flora, and good sunshine, but unfortunately erratic rainfall seasons. Interested in becoming a beekeeper? Too many enthusiastic would-be beekeepers venture into this field, lay out a considerable sum of money, buy beehives and related equipment, but

don't know the end picture or rather the bottom line of what they have set out to accomplish, and within a short period the operation is abandoned.

Most of all they need to be encouraged to rather press on and overcome this momentary disappointment by joining an association and just mixing with fellow beekeepers who share the same interests and disappointments.

There are beekeeper associations in all the provinces and one should join an association to keep in

Continued on page 23



WIRE TENSIONER

- New in SA, Innovative design
- Far surpasses conventional chain tensioner
- Delivered countrywide

Backsaver
073 454 4111

STUMBELBLOC



BUILD HOUSE WALLS FOR R 98, 00/m²



Contact us now for more information:
www.stumbelbloc.com
or call 083228 8036

MAKE YOUR OWN BLOCKS AND BUILD YOURSELF

TEL: 012 653 8342/8 or 083 269 0389

Email: dennismow@mweb.co.za

Unit 9 Miracle Park, Lenchen Ave

Ext off Old JHB Road CENTURION

GPS: 25°52.753'S, 28°9.635'E

EAST RAND: 011 730 3400

VALID UNTIL END JULY 2017



SERVING THE PUBLIC FOR 21 YEARS



**Garden services
choice!**

AUTUMN = BLOWER & SWEEPER TIME!

Hand Held Blowers

25.4 cc – **R1,550** Excl. VAT
With Vacuum 25.4 cc
– **R1,795**
Excl. VAT



Backpack Blower

51.7cc – **R2,400** Excl. VAT
63.3cc – **R3,100** Excl.
82.4cc – **R3,250**



Floor Sweeper

800 mm
Operation width
2 Rotary Brushes



R1,900
Excl. VAT

2-Stroke Engine 550

122 cc,
2.7 kW,
3.6 hp

R1,975
Excl. VAT



2-Stroke MT110 Big Bore

128 cc
Vertical Engine,
5.8 hp

R2,750 Excl. VAT



4-Stroke Petrol Engine

118 cc
3.2 kW,
4.3 hp

R1,500 Excl. VAT



480 mm Push Mower
With Power Pro 430 Engine
118 cc
3.2 kW, 4.3 hp
Steel Pressed Deck
55 L Grassbox

R3,025
Excl. VAT

Brush Cutters

26 cc
(Bent shaft)
R1,200
Straight
Shaft

32.7 cc – **R1,395**
42.7 cc – **R1,650**
51.7 cc – **R1,895**
All Prices Excl. VAT



Water Pumps

25 mm
R1,450
Excl. VAT



2" – 50 mm
R1,995 Excl. VAT
3" – 80 mm
R2,100 Excl. VAT

Multi Tool



32.7 cc Power Unit with
1). Nylon Head,
2). Pole Pruner,
3). Hedge Trimmer
4). Lawn Edger
All 4 attachments incl.
R4,350 Excl. VAT

4-Stroke Petrol Engine

173 cc
Vertical,
4.5 kW, 6 hp

R1,995 Excl. VAT



4-Stroke Petrol Engine

212 cc
5.25 kW,
7 hp @ 3600
Horizontal

R1,400 Excl. VAT



4-Stroke Petrol Engine

440 cc
11.25 kW,
15 hp,
Horizontal

R3,200 Excl. VAT



Diesel Engine 8RC

296 cc,
(for bore-
hole pumps),
6 kW, 8 hp

R4,950
Excl. VAT



Diesel Engine 1100D

458 cc,
Horizontal,
8.25 kW,
11 hp

R5,250
Excl. VAT



63.3 cc Earth Auger
Double Operation
Drill Bit included

150 mm – **R2,850**
200 mm – **R2,950**
250 mm – **R3,150**



Chainsaws 50.8 cc
2.4 kW, 3.2 hp / 8500
20" / 510 mm Bar Length

R1,800
Excl. VAT

Push Brush Cutter

42.7 cc
1.35 kW / 1.8 hp / 7000 rpm

R2,150 Excl. VAT
Optional Extra:
Third Wheel



Backpack Mist duster

82.4 cc,
4 kW / 5 hp
20 Liter
Chemical
Tank

R3,300
Excl. VAT



Pole Pruner

27.2 cc,
Cut. Length: 255 mm
Overall Length: 3 – 4.3 m

R3,550
Excl. VAT



Backpack Sprayer

16 Liter

R375
Excl. VAT

Hedge Trimmers

22.5 cc
600 mm Cutting width

R1,800
Excl. VAT



PRICES PER UNIT, EXCL. DELIVERY & VAT. VALID FOR COD PURCHASES ONLY. WHILE STOCKS LAST. MODELS AVAILABLE MAY DIFFER FROM ILLUSTRATIONS. E&O

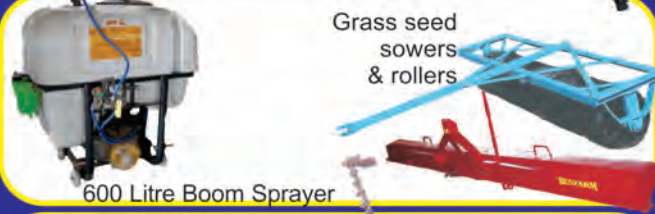
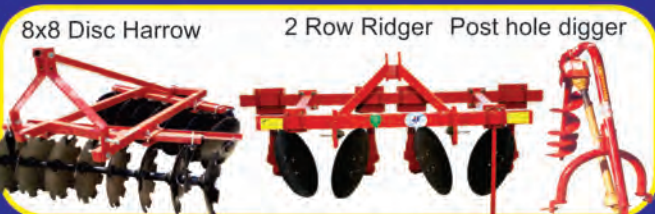
Your Preferred Supplier of Agri-equipment, Spares & Consumables

- Herbicides, Pesticides,
- Poisons & Baits,
- Veterinary Pharmaceuticals
- Veterinary Equipment

More than 100 years' experience

In all pack sizes for farmers and smallholders!!

ON SPECIAL NOW!
COARSE SALT
A GRADE 50kg BAGS



BREDAL

K KONGSKILDE

Tractor & implement spares

FALCON FARMTRAC Kubota

20ness Investments cc t/a

BENFARM

65 Unity Ave, New Modder, Benoni Tel 011 423-2801

Ronnie 082 900-5400 Sales & Spares 074 362 6696

Admin & Accounts 072 740 9102

email 20ness@mweb.co.za Website coming soon!

Full range of Jo-Jo tanks

HORSEMANSHIP

A finely-tuned eating machine

In trying to dissuade his son from becoming involved in the horse breeding and racing industries, Gary Player's father is said to have given his son the following advice: "Never keep anything that eats while you sleep."

He knew what he was talking about, did Old Man Player, although his advice didn't help ~ son Gary went on to become not only a world-champion golfer but also a leading and highly-successful racehorse breeder.

Horse lovers who have spent time observing their animals will know that there is truth in this admonishment, for left to their own devices horses will eat for between twelve and 18 hours a day. These hours are broken up into about 15 to 20 grazing periods. It is unremarkable, therefore, that horse owners who understand how the horse's digestive system works are likely to have fewer digestive problems with their animals. Horses are herbivores ~ they are designed to eat plants, which should make up the horse's entire diet in one

form or another.

They are also non-ruminants, and have what is referred to as a "simple stomach" ie, one compartment that functions a lot like the human stomach. The anatomy of the horse's digestive tract is straightforward.

It is made up of:

- ☐ the mouth and teeth,
- ☐ oesophagus,
- ☐ stomach,
- ☐ small intestine,
- ☐ cecum,
- ☐ large colon,
- ☐ small colon,
- ☐ rectum, and,
- ☐ anus.

Digestion means the breaking

Continued on page 26

BEEKEEPING

From page 21

touch with developments in the bee world. There are three associations in Gauteng alone, colloquially known as "Southern", "Northern" and "Eastern". Southern draws its membership from Johannesburg, the West Rand and the South, Northern draws its membership from the Pretoria area and Eastern covers from west of Kempton Park, east to Waterval Boven, north to Verwoerdburg and south to Van der Bijl Park. Eastern has been in existence

since 1918. The association went into recess from 1938 to 1946 during the war years but reopened in 1946. Eastern meets at Highveld Honey Farms, 186 Uys Road, Rynfield, Benoni on the third Saturday of the month at 09h30.

The association's activities are varied to cater for all aspects of beekeeping from beginners to the "old hands," and ladies, gents and juniors are all welcome.

For more information: Peter Clark, chairman, tel 011 362-2904

STIHL®



**BRIGHTEN UP
YOUR WINTER
WITH STIHL.**



BG 50 Petrol Blower
3.6 kg • 0.7 kW • 60m/s
R 2 295



BG 56 Petrol Blower
4.1 kg • 0.7 kW • 64 m/s
R 3 595



BGE 71 Electric Blower
3 kg • 1.1 kW • 66 m/s
R 3 595



MS 170 Petrol Chainsaw
3.9 kg • 1.3 kW
Incl. 30cm bar & chain
R 2 495



MS 250 Petrol Chainsaw
4.6 kg • 2.3 kW
Incl. 35cm bar & chain
R 4 595



**WE WILL SHOW
YOU HOW**

Recommended Retail Prices. Prices incl. VAT. Valid until 31 July 2017. E&oe.

FOR ADVICE ON THE CORRECT PRODUCT FOR THE JOB CONSULT YOUR STIHL DEALER

ALBERTON: Lawnmower Clinic 011 907 8484 • **BENONI:** Master Mowers 011 395 2648 • **BRITS:** Enviro Chainsaws Brits 012 252 2479
• **BRONKHORSTSPRUIT:** Bronkhorstspuit Fietswinkel 013 932 0531 • **BRYANSTON:** Lawnpower 011 705 3556 • **CENTURION:** Enviro
Chainsaws Centurion 012 653 2479 • **DELMAS:** Deltool 013 665 3192 • **HEIDELBERG:** Masakhane Industries 016 349 6927
• **JOHANNESBURG:** Green's Industrial 011 614 0295 • **KEMPTON PARK:** Precision Mowers 011 391 0708 • **KRUGERSDORP:** GP
Lawnmowers 011 955 3610 • **LYNWOOD:** Mowtown Lawnmowers 012 348 6427 • **OAKDENE:** Glen Mowers 011 436 2220

Backpack blowers are a very powerful tool in fire management.

They can be used to quickly and effectively pre-clear fire lines or for controlling fire breaks, where they are primarily used to speed up the burn or to extinguish the fire break completely. They are a cost-effective means of clearing dry earth mineral firebreaks and managing cold fires, and can replace beaters on a fire line.

Despite their many uses in fire management, blowers are by no means a complete fire-fighting solution.

It is not recommended that backpack blowers be used in grass taller than knee height or on very hot fires, as this becomes dangerous for the operator. Blowers should only be used where beaters would otherwise have been used, and can never replace water out in the field. It is also important to assess the terrain - walking through thick bush or climbing through fences with a backpack blower could be challenging. Fires should never be tackled head on, but rather from the sides and the back of the blaze while waiting for the fire-tender to arrive.

STIHL blowers are light weight, making them easy to handle and carry around, and they are particularly comfortable for extended use with a high power-to-weight ratio, low vibrations and ergonomically designed harnesses.



BR 700 Backpack Blower
64.8 cc • 10.8 kg
88 m/s • Max 1860m³/h



BR 600 Backpack Blower
64.8 cc • 10.2 kg
90 m/s • Max 1 720 m³/h



BR 500 Backpack Blower
64.8 cc • 10.1 kg
81 m/s • Max 1 380 m³/h



HORSEMANSHIP

From page 23

down of foodstuffs in the body into a form that can be absorbed and used or excreted.

A horse's diet is made up of water, carbohydrates, fats, protein, minerals and vitamins and each of these components is digested in specific areas of the tract. If something happens where it shouldn't, problems and digestive upset can easily occur. You particularly need to guard against gastric ulcers and the dreaded colic. Almost all digestion of simple carbohydrates, protein, and

fat mostly takes place in the small intestine, though it begins in the stomach. Simple carbohydrates (starches and sugars) and protein begin digestion in the stomach by being slightly broken down, and then the majority of the digestion of these nutrients occurs in the small intestine. Fats are slightly hydrolysed by enzymes in the stomach, but the majority of fat digestion also occurs in the early small intestine.

On the other hand, complex carbohydrates (cellulose, lignin) are digested mostly in the cecum and partly in the colon. There is also a small amount of protein that may be digested in the large intestine. The cecum and colon are where the microbes that digest the fibre in your horse's diet (most of the contents of hay, pasture, etc.) live, so these areas are where these substances are finished

digesting.

After food is gathered up into the mouth, chewed, and swallowed, the stomach kicks into gear. The main functions of the stomach are to add gastric acid to help with the breakdown of food, to secrete an enzyme to begin protein digestion and to regulate the passage of food into the small intestine. Basically the stomach is a holding and mixing tank. While food breakdown may begin in the stomach, it continues in the small intestine, where secretions help with the further digestion of protein, simple carbohydrates and fat. The small intestine is also the main site of nutrient absorption once they

are in small enough form.

Amino acids, glucose, vitamins, minerals, and fatty acids are taken into the body as they move along the small intestine, so progress shouldn't be too fast or too slow.

Continued on page 27



Left to their own devices in a field, horses will look like they do nothing other than eat

HIGHVELD HONEY FARMS

PROTECT OUR BEES
 Visit our farm in Rynfield to get your honey at farm prices. Bring your own containers and we will fill them up - pay ONLY for the HONEY
 Plot 185 Uys St, Rynfield AH, Benoni
 Tel 011 849-1990
 Weekdays 07:00-17:00
 Saturdays: 07:00-13:00

BUILDING A HOUSE?
 don't look anywhere else!

BRICKS * SAND * STONE CEMENT * HARDWARE

B-HOUSE BUILDING SUPPLIES

C/o Garsfontein Rd & Blesbok St, Mooikloof Pretoria East
 Tel: 012 480 0088
 Cell: 082 558 9722
 www.b-house.co.za
 Email: sales@b-house.co.za

**Open: Mon - Fri: 07:00 - 17:00
 Saturday: 07:00 - 13:00**


B-HOUSE BUILDING SUPPLIES
 Mini & maxi loads of Building Materials

THE Greenhouse COMPANY

 We supply & install Eco water tanks in Alberton & Vaal Triangle areas

Don't let your taps run dry
 Install a municipal back-up supply
 SAVE WATER - USE YOUR RAINWATER AS BACK-UP

We still have stock from 2016
 2 500ℓ = R2 400 incl.

Delivery cost dependent on area

0800 123 685
 Contact Gail or Puleng
 www.thegreenhousecompany.co.za



Phone for **Free Quotation**

WaterMan
 Drilling & Pumps
 Find us on: facebook.

- Borehole Yield Testing SANS 10299 BWA app
- Water quality testing SANS 241
- Rehabilitation of Existing Boreholes
- Borehole pump sales & installation
- Exploration & Monitoring drilling
- Reverse Circulation Drilling (RC)
- Symmetric Drilling
- Large Diameter Drilling
- Water borehole drilling



**info@watermandrill.co.za
 www.waterman-drilling.co.za
 BRONKHORSTSPRUIT**

**Tel: 013 932 1740
 Cel: 079 526 7196
 Fax: 013 932 2352**

From page 26

The processes that occur in the cecum and colon are less about breaking down food into smaller, absorbable particles with the aid of enzymes and more about fermenting complex carbohydrates (fibre) into useful end products with the assistance of the "good bugs."

In addition to generating fatty acids, which supply energy or calories, these helpful micro-organisms also produce B-vitamins, Vitamin K and some amino acids. The colon then serves not only to absorb these nutrients but also a portion of the water that accompanies food as it moves along the digestive tract. About 70% of the diet should be made up of fodder or roughage. Roughage requires more chewing than concentrates, which leads to more saliva being produced. The saliva helps to neutralise stomach acid which leads to healthy stomach environ-

ment. It is therefore important that horses have access to roughage at all times. Good quality grazing and hay will improve the horse's overall condition.

In general in Gauteng, you have a choice of three species of baled fodder. They are two Eragrostis species, E teff, commonly called teff, and E curvula, called eragrostis, weeping lovegrass or oulandsgras, and a Digitaria species, D eriantha, formerly known as Smutsfinger grass. Common field grazing will

include these species and many others which the horse will consume according to their palatability ~ and availability.

You can also consider baled lucerne as a fodder but this generally is fed in very small quantities, especially to children's ponies, lest they become impossible to manage.

The general rule for feed concentrates is that 1% of the horse's body weight per day should be enough. Horses can only digest about 2kgs of

concentrate per meal.

There are many brands of horse concentrates on the market. Some come in meal form, others are pelleted and still others cubed. Small ponies may find the size of cubes too large for their mouths.

Some feeds contain maize, some are free of certain components such as maize, but all are rated according to their protein content, stated in a percentage. Common protein percentages are 10%, 12% and 14%. All made-up feeds must be registered and certified in terms of the Animal Feeds Act although buyers should be aware that this is not a guarantee of quality of the feed or its ingredients, but rather a simple certification that the proportions of the stated ingredients are present in the stated proportions.

Factors such as the size and age of the horse, its breeding



There is a large variety of brands and formulations of horse concentrates to choose from.

Continued on page 29

35cm BAR CHAINSAW STIHL MS250 45.4CC R4030.69 <small>Excl VAT</small>	BLOWER STIHL BR420 56.5cc R4999.00 <small>Excl VAT</small>	BRUSH CUTTER STIHL FS280 38.9cc R5795.00 <small>Excl VAT</small>
--	---	---

GREEN'S INDUSTRIAL SUPPLIES

Sales, service and repairs.

Authorised

dealer.

Tel: 011 614 0295/6

www.greensindustrial.co.za

SEAL YOUR DAM OR POND ~ YOURSELF!

NEW IN SA: AQUA PLASTECH D-I-Y DAM & POND SEALER

PLUS: Cleans water of suspended solids

before treatment...

...after treatment

- Seals dams without draining
- Simply spread directly on to water surface
- Do it yourself: Easy to apply
- No specialised labour or equipment
- Eco-safe: non-toxic to fish & wildlife
- Biodegradable

super absorbent polymer

Cost-effective, easy coverage

~ only 60-75g/sqm

Andre ~ 072 378 1257

info@aquaplastech.co.za

Full product details at www.aquaplastech.co.za

Agents Wanted Throughout SA

imported product

Genius Landini
Import & Export cc



**ONS HET IETS VIR ELKE
BOER SE BEHOEFTE**



Landini **MCCORMICK**

**WE STOCK A WIDE RANGE OF
TRACTORS AND IMPLEMENTS**

**BALERS
WRAPPERS
RAKES
DISC MOWERS
TEDDERS**

NEW **FALCON** SLASHERS
BALE HANDLING MACHINES

**A WIDE RANGE OF
BP IMPLEMENTS
AVAILABLE**

IN STOCK:

**BALE TWINE FOR
SQUARE BALERS
ROUND BALERS
BIGPACK BALERS**

**HIGH QUALITY NETTING
FOR ROUND BALERS
& WRAP PLASTIC
FOR WRAPPERS
AVAILABLE AT
GOOD PRICES**

**WIDE RANGE OF
PALLET NETTING
& HAND STRAPPING**



GPS: 26°04.157'S 27°40.845'E

TEL: 011 952 9926/7/8

FAX: 086 571 5578

marco@geniuslandini.co.za

admin@geniuslandini.co.za

**ENGEN OLIE MET UITKLOP PRYSE
ENGEN OIL AT KNOCKOUT PRICES**



**20 litre
210 litre**

USEFUL STUFF

Strobe light rids your roof of rats

Plagued by rats in your roof? Rather than ridding yourself of these destructive and noisy little rodents by laying out poison (thereby rendering them harmful to predators), you can encourage them to move away and seek more conducive living quarters by fitting a light device in your rafters.

Marketed by Eco Solutions, it comprises a strobe light that is aimed at the rats' nests.



Eco Solutions' strobe light

Much like when a human looks at a very bright light source, the bright, erratic flashing of the light causes the

rats' pupils to contract, rendering them (like humans) temporarily unsighted. This disorients them and they

soon leave the area in search of safer hidey-holes.

The device is about the size

Continued on page 31

HORSEMANSHIP

From page 27

and work rate will affect what one chooses and how much, but one should bear in mind that horses are also individuals, and, like humans, some do better on one diet than on another. A certain amount of experimentation is called for, with the proviso that any change in diet ~ be it of concentrate or fodder ~ should be made gradually over a few days if one is to avoid colic.

Generally, riding horses and ponies and those on light work should thrive on a 10% ration twice daily, at a rate of a couple of kg a feed (half a bucket or so). More athletic

horses will require a 12% concentrate while racehorses etc will be fed a 14% ration or higher. Special circumstances such as mares in foal or horses recovering from injuries might require higher or lower protein rations.

The key to feeding horses is "little and often." In practical terms most owners feed hard rations twice a day, morning and night, with either nets of hay provided during the day, or free access to grazing.

The morning feed should comprise a ration of protein (concentrates) while the evening feed should comprise concentrates and a large net of fodder with which the

horse will settle down for the night. If, for whatever reason the horse is kept in its stable during the day it should have a net of fodder available to keep it busy (which will help, but not eliminate, the development of stable vices). Horses allowed free access to pasture graze more or less continuously, but peak grazing periods occur just after dawn and just before dark. They spend about 70% of daylight hours and about 50% of night hours grazing. This is another reason why we have to provide a hay net if we stable the horses at night.

STEWARTS & LLOYDS PALISADE

Cold formed palisade panels

40 x 40 section
16 palings per panel

3 000mm wide x 1 800mm high **R680.00**
3 000mm wide x 2 000mm high **R733.00**

Cold formed palisade palings

40mm x 40mm	30mm x 30mm
1 200mm R25.53	1 200mm R17.11
1 500mm R27.00	1 500mm R21.39
1 800mm R32.40	1 800mm R25.66
2 000mm R36.00	2 000mm R28.52

3 or 7 spike available

CF PALISADE GATES

Includes wheels & tracks

40x40 GATES, 1,8m R858/m
40x40 GATES, 2,0m R891/m
30x30 GATES, 1,8m R715/m
30x30 GATES, 2,0m R770/m

76 x 76 Square Posts
2 400mm R155.00
3 000mm R206.00
Includes domed cap

*The Largest Manufacturer
of Steel Palisade Fencing
in the Southern Hemisphere*

Cold formed palisade panels

30 x 30 section
19 palings per panel

3 000mm wide x 1 800mm high **R603.00**
3 000mm wide x 2 000mm high **R644.00**

Palings and panels
manufactured
from 500mm to 3 000mm height

Alrode 011 900 4270
Boksburg 011 917 0778
Booyens 011 496 3000
eMalahleni 013 692 8425
Pretoria 012 800 9600
Robertville 011 672 1100

Only A-Grade Material Used
We Manufacture Various Lengths
Free Delivery • All Prices include VAT • E&OE

Springs 011 811 5111
Vanderbijlpark 016 981 2038
Vereeniging 016 421 3260
Wadeville 011 824 1800
Wynberg 011 321 7900

www.mnani.co.za
www.tuffy-agri.co.za
gert@mnani.co.za
sales@mnani.co.za
accounts@mnani.co.za

8 THIRD STREET , DELMAS



TEL 013 665 3054
TEL 013 665 2800
IMPLEMENT VERKOPE
076 560 9856
ONDERDELE VERKOPE
083 393 1701

TUFFY SLASHER



HEAVY DUTY GENERAL OFFROAD CUTTING
FROM 800mm TO 1,8m

TUFFY ROTAVATOR



AVAILABLE IN 1,05m, 1,25m, 1,5m AND 1,8m

TUFFY DISC PLOUGHS



DISC PLOUGH FOR PLOUGHING SOIL
AVAILABLE IN
3 DISC 510mm AND 3 DISC 660mm

TUFFY MINI ROUND BALERS



AVAILABLE IN
500X800 ROUND BALER
700X800 ROUND BALER
700X1000 ROUND BALER



ALL IMPLEMENT REPLACEMENT PARTS - ANY MAKE OR MODEL

DISC BEARINGS, DISC SHAFTS,
DISC SPACERS, RIPPER TINES,
CULTIVATOR TINES, BOLTS &
NUTS, PTO'S, UNIVERSALS,
YOKES, SPROCKETS,
CHAIN, IMPLEMENT PINS,
TOP LINKS.

MOWER SPARE PARTS

BLADES, BOLTS, BUSHES.

— USEFUL STUFF

Wheel-less 'trailer' is good in tight corners

Having something on a plot that one can cart stuff about with that is larger than a wheelbarrow is a really great help, and obviously a small trailer for your tractor comes to mind. But new on the local market is an implement named the Mossiewa, that surpasses even a trailer in handiness and maneuverability. It is a lifting platform that attaches to your tractor's rear hydraulics and as such allows you to load items at ground level (ie no arduous lifting), or off stacks at some height off the ground. Moreover, being wheel-less it is much more maneuverable than a trailer, and will thus prove especially popular with nurserymen, tunnel farmers

and stable yards where space is at a premium. And, of course, you will never suffer a puncture!

Designed and manufactured by Mr Hangar of Pretoria North, the lift trailer is available in four models to suit all sizes of tractor hydraulics.

The smallest unit measures 900mm by 900mm and has a capacity of 500kg, while the largest unit measures 1,48m x 1,2m and has a capacity of 1,5 tons. Two variants of this model are available, namely a flatbed and a model with dropsides, especially suited to carrying sands, manure, grain etc.

For more information call Marius on 072 726-3920.



Mossiewa lift trailer attached to tractor's 3-point hydraulics

— LIGHT

From page 29 of a man's hand and is simply mounted on a handy rafter or roof beam pointing at the rats' nest. Power is supplied from the house mains and there is a switch on the light, although in reality you will want to switch it on and off at the mains rather than

clambering into the roof to activate and deactivate it. It can be bought for R980 and installed as a DIY job, or Eco-Solutions will install it for you for R1 490.

For more information: Eco-Solutions tel 011 791-7326

Budgies 2 Bantams
 Breeders, Buyers & Sellers of Exotic Poultry & Small Stock Animals

Breeders of over 50 breeds of poultry

55 fully stocked cages

NOW IN STOCK:

Boschvelders

Locally-bred

Colourful Hardy

Bred for Highveld conditions

We Hand-rear AFRICAN GREYS

Specialists in Exotic Poultry

Mixed Fowl
Starter Mash
Whole Mielies
Growing Pellets
Laying Pellets
Growing Mash
Budgie Seed
Sweetfeed

Unique Farm Pet Shop
Aviaries, Cages, Pet accessories:
Dog leashes, Shampoo, etc.

Only 20 min drive from PTA CBD & Fourways on the M26 (Main Road/Erasmia)

Open Sundays & Public Holidays
 By appointment only

info@budgies2bantams.co.za
www.budgies2bantams.co.za
Mohamed 082 379 1555
 (Owner: complaints/queries)
Chris 079 692 0542 (sales/buyer)
082 689 0287

Proud sponsor of the Southern African Show Poultry Organisation

MESH FOR BIRDS



226 High Road, Pomona, Kempton Park
Inside the premises of Birds and Pets For Africa
Open Monday to Sunday from 8:00 am to 5:00pm
Contact us on: www.meshforbirds.co.za
Barry: 083 679 1317 or aviary@mweb.co.za
Adelle: 083 427 7101 or sales@meshforbirds.co.za

Mesh: Galvanised After Welding Sold in 30m rolls or p/m

Block Size	Wire dia.	915mm	1220mm	1830mm
6.4mm x 6.4mm	0.7mm	✓	✓	-----
9.6mm x 9.6mm	0.9mm	✓	✓	✓
13mm x 13mm	1.0mm	✓	✓	✓
13mm x 13mm	1.6mm	✓	✓	✓
13mm x 25mm	1.0mm	✓	✓	✓
13mm x 25mm	1.25mm	✓	✓	✓
13mm x 25mm	1.5mm	✓	✓	✓
13mm x 25mm	1.6mm	✓	✓	✓
13mm x 25mm	2.0mm	✓	✓	✓
25mm x 25mm	1.0mm	✓	✓	✓
25mm x 25mm	1.5mm	✓	✓	✓
25mm x 25mm	1.6mm	✓	✓	✓
25mm x 25mm	2.0mm	✓	✓	✓
25mm x 25mm	2.5mm	✓	✓	✓
25mm x 25mm	3.0mm	✓	✓	✓
25mm x 50mm	1.5mm	✓	✓	✓
25mm x 50mm	1.6mm	✓	✓	✓
25mm x 50mm	2.0mm	✓	✓	✓



Mesh: Galvanised Before Welding Sold in 30m rolls or p/m

Block Size	Wire dia.	915mm	1220mm	1830mm
25mm x 25mm	2.5mm	✓	✓	✓
25mm x 50mm	2.5mm	✓	✓	✓
25mm x 50mm	3.0mm	-----	✓	✓
50mm x 50mm	1.6mm	✓	✓	✓
50mm x 50mm	2.0mm	✓	✓	✓
50mm x 50mm	2.5mm	✓	✓	✓
50mm x 50mm	3.0mm	-----	✓	✓
50m x 100mm	2.0mm	✓	✓	✓
50mm x 100mm	2.5mm	✓	✓	✓
100mm x 100mm	2.0mm	-----	✓	✓
100mm x 100mm	2.5mm	✓	✓	✓

Hexagonal Mesh (Oogies draad) 50m rolls/p/m

Hole Size	Wire dia.	915mm	1220mm	1830mm
13mm hole	0.7mm	✓	✓	✓
25mm hole	0.9mm	✓	✓	✓
75mm hole	1.8mm	✓	✓	✓
90mm hole	1.8mm	✓	✓	✓

A16, A18, A20 Hog Rings and Pliers



Light Duty J-Clips and Pliers



Heavy Duty J-Clips and Pliers



Bowls, Coop Cups and Swivel Feeders



11.5cm
14.0cm
16.5cm
21.0cm



7.5cm
9.5cm
12.5cm
15.0cm



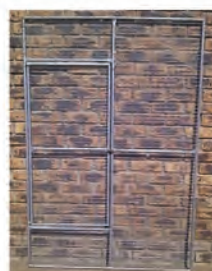
7.5cm
9.5cm
12.5cm
15.0cm



Double Bowl & Triple Bowl
11cm, 14cm, 16cm



Panels & Gates



Trap Cages

Various Sizes for Jackal, Meerkat, Leopard etc



Aviaries and Cages

(Round, Square, Hexagon, Arch /Pitch roof etc)



**We build custom aviaries
to your specification**

USEFUL STUFF

Aussie design fence tensioner beats chain type hands down

If you have ever used a traditional chain and ratchet fence wire tensioner you will know that it's a device that will often leave you close to tears and with a fence not quite as tight as you'd like.

For a start, you'll know that the little metal clasps that hold the wire have a tendency to come loose as you ratchet the fence up, particularly on new shiny wire, often with a resounding "FLANG!!!" as the whole thing springs apart.

Then, as you try to join the wires you're tensioning you will know that the chain, now under tension itself, lies exactly parallel to the wires you're working on, making gripping them and twisting an exercise in frustration as you constantly become entangled with the chain.

And finally, when you've

Another superior smallholder device from Backsaver of Bultfontein

joined the wires to the best of your ability and you hit the metal clasps with your fencing pliers to loosen the chain (another "FLANG!!!" as it all jumps apart), you will know

the disappointment you feel as you see much of the tension you'd achieved going to waste as the loop of wire you'd been working on takes up much of the tension you'd achieved in the rest of the fence.

Well, here's some good news: the ever-innovative Michris Janse van Rensburg, designer and manufacturer of the Backsaver range of small farmer implements and planters, has developed a tensioner that overcomes all of those problems.

Based on an Australian design, the new tensioner comprises five lengths of sturdy steel flat bar bolted together to form a device that looks much like a pair of lopping shears.

The two long handles are hinged about a quarter of the way up their length in such a



Australian-design fence tensioner from Backsaver

Continued on page 35



WATER PLANT

turning your garden into a paradise
since 1982

Open Sundays from 09:00 to 15:00

Hartbeespoort: R512, near Pecanwood
Tel 0861 987 654 / 012 244 1324
Cell 083 407 7589

THE COURIER SERVICE
GUY AVAILABLE

STAY WARM THIS WINTER!!!



30 Watt Solar Panel with Solar Submersible Pump

only 4 **R799**



Koi Filter Systems

6 000L only 2 **R6 999**

12 000L only 2 **R8 499**

36 000L only 1 **R12 999**



V750 Drainage Pump 300 litres/min

only 4 **R2 699**



www.waterplant.co.za

Valid for July 2017, while stocks last.

Quality Agricultural Equipment & Spares

SPECIAL OFFER

Slasher Gearbox

Good Quality

only **R2500** excl VAT

Hurry!

Limited Stock!!



Major Swift 1,9m & 2,4m
Roller Mowers



MAJOR
WWW.MAJOR-EQUIPMENT.COM

SPECIAL OFFER:
Buy a Landini Solis 50 tractor
& we will add a PTO-driven
-POWA-SPRAYER free

Kioti CS2610 20kW
4-WD Tractor



**Blades,
Skids
& Bolts**

Slasher Spares

for ALL makes & models



**RTS 13000LB
4x4 Winch Kit**



-POWA- MOWER

Ariens 18,7kW
Lawn Tractor



**PTOs,
Components
& Spares**



-POWA- SPRAYER



Gravely Proturn 60
Zeroturn Mower



Landini Solis 20,
13kW 4-WD Tractor



Landini Kioti McCORMICK

Also stocking these fine brands



MONOSEM

Supaturf

**WORKSHOP
NOW OPEN**

We **REPAIR:**

Tractors

Implements, Mowers,

Chainsaws, Brushcutters

etc, etc

1 West Street

Boksburg East

Tel: 011 914-1922

Fax: 011 914-1923

Kioti MEC2210 16kW 3-cyl ATV



TOUGH AS NAILS AGRICULTURAL EQUIPMENT



REAPERS

AGRI

MADE FOR THE TOUGH AFRICAN BUSH

www.reapersagri.co.za

Landini Solis 50, 35kW 2-WD Tractor



Pieter Visagie (snr)

082 616-8060

pieter@reapersagri.co.za

Pieter Visagie (jnr)

076 423-9860

sales@reapersagri.co.za

Replace aliens with indigenous lookalikes

You might not wish to cut down an established tree on your property just because it is an alien unless ordered to do so by an authority because such an action may leave an unsightly gap in your garden. However, there is good news: in many cases you can go ahead and remove alien trees, replacing them with indigenous alternatives which perform in much the same way in terms of shade, height

and spread, and which are less damaging to the environment.

The *Gauteng Smallholder* has written extensively over the years about the challenges we face in dealing with invasive alien plants (IAPs). And, of course, winter is a good time to cut down exotic trees or remove dead ones and to replace them with a suitable indigenous tree.

Our focus would be on eliminating invasive aliens,

which are a threat to our natural biodiversity. What makes an alien plant become an invader?

- ☐ Absence of natural enemies.
- ☐ Similar conditions to native country.
- ☐ Vegetative reproduction.
- ☐ Prolific seed production, long-lived seeds.
- ☐ Effective seed dispersal mechanisms, such as water, wind and birds.

However, just because a tree

is indigenous doesn't mean that it will grow well on a Gauteng plot. Trees from the Western Cape with its wet winters or from some areas in Kwa Zulu Natal will find our frosty winters too hard to handle.

A common alien tree that should be replaced is *Acacia mearnsii* or Black Wattle. This tree competes with and replaces indigenous grassland and riverine species. Your

Continued on page 36

USEFUL STUFF

From page 33

way that they each grip the wire to be tensioned, and the harder you pull the handles together the harder they grip the wires, so there is no danger of them loosening, even on smooth wires. Because of the length of the handles, (which can be made as long as you like by slipping a piece of pipe over each

handle end) you are able to achieve a good strong tension with the force building up on much the same fulcrum principle that a nut-cracker works on.

When you have the wires as taut as a guitar string, a chain is hooked between the handles to hold them firmly together.

A piece of flexible binder wire is then twisted around the wire to be tensioned outside each of the handles and, using a screwdriver, the handle of your fencing pliers or a fencing tool, you twist the wire around and around the wire to be tightened, each twist drawing in the slack and making the fence taut.

This is achievable, without becoming entangled with the tool, because the fulcrum of

the two arms is kept well away from the work area by the length of the arms, and a short piece of steel that joins them.

Once you have achieved the desired tautness, the securing chain is detached from one arm and the tool removed to

reveal a perfectly-tensioned wire, as taut as it was when you were working on it. The fence tool may be ordered from Backsaver and can be delivered by mail. For more information: Michris Janse van Rensburg, tel 073 454 -111

Plot Services

- Grass Cutting
- Ripping
- Ploughing
- Site Clearance

**Best Rates
Best Service**

Around PTA only

Call Marius today
072 726 3920

**Dam Linings
Damvoerings**


Reservoir Linings


Mesh Dams


Zinc Dams


Earth Dam Linings


Feedcovers


Truck Tarps

TATA MA TARPS & LININGS

072 279 3294
www.tatamatarps.co.za

GUSTO PUMPS CC
Water Specialists

THIS IS THE SIGN FOR WATER MANAGEMENT

We supply and repair all
PIPES, FITTINGS AND TANKS,
SUBMERSIBLE PUMPS,
BOREHOLE PUMPS,
SWIMMING POOL PUMPS,
& PRESSURE SYSTEMS.

At the best prices!


Drilling


Tanks


Submersible Pumps


Pressure Systems


Borehole Pumps

Tel 011 957 2588
Carina Krause
082 872 4143

WATER IS OUR BUSINESS

We carry the widest range of pumps and fittings for all your requirements

- Borehole Testing & Certificates
- Dewatering of Dams & Pools
- Installations of Borehole pumps & Garden Irrigation
(Phone for Quotation)
- We now stock **Solar Pumps, VSD Drives, Water Tanks and Water Harvesting**

Borehole testing up to 100 000ℓ per hour. Borehole inspections can be done with latest camera technology.



RAP/TECH



Grüppe



LEO

011 660 7824
TECHNOLOGIES
amanti
mark@amantitech.co.za
www.amanti.co.za
67 Commissioner street, Krugersdorp
GPS 26°06'07"S, 27°46'20"E (opposite Action Ford)
Consultations on ALL your water problems

INVASIVE ALIENS



Rhus lancea (Karee) in flower will attract bees and other insects.

From page 36

plot can be invaded by dense thickets of black wattle, which reduces the grazing area for your livestock. An evergreen tree growing 5-10m high, black wattle has dark olive-green, finely hairy leaves, rough, greyish bark, small pale yellow to cream, globe-shaped flowers in large, fragrant sprays, (August to September) and finely haired, dark brown seed pods.

If you are replacing the tree in your garden, you will want something of a similar size and shape.

You might consider one of the species of Karee as a replacement.

Rhus lancea Karee is a very hardy, evergreen, drought resistant tree with a graceful, weeping form. The dark, fissured bark contrasts beautifully with the long, thin, bright, trifoliate leaves. The inconspicuous yellow-green flowers (male and female flowers on separate plants, therefore only female

plants bear fruit) from June to September attract insects and bees and are followed by bunches of edible fruit that attract birds. The small flowers are borne in abundance and give the tree a lacy look when in bloom. It thrives in clay soils and is fast growing if watered regularly, even though it is also drought hardy. It makes a great climbing tree for children if the lower branches are not pruned off. Plant in sun or semi-shade in virtually any soil type and it grows up to 8m.

Rhus leptodictya, Mountain Karee, is also a very hardy, evergreen, drought resistant, small, decorative tree with a drooping crown of bright green foliage. The bark on young stems is reddish brown, becoming darker and rougher as the tree matures. The lovely reddish wood is used to make beautiful small pieces of furniture.

The inconspicuous flowers

Continued on page 37

INVASIVE ALIENS

From page 37

are borne from January to April. These are followed by bunches of edible fruit which attract birds to the garden. It grows in most soil types and makes a beautiful, graceful tree that is ideal for a small garden in sun or semi-shade. It is also beautiful as a small avenue tree.

It is a valuable fodder tree especially in times of drought or when little else palatable is

green in the veld.

The replacement tree should also not be too slow growing. Of course the terms 'fast' and 'slow' in the context of trees are relative terms. Indigenous highveld trees usually grow at a rate of between half a metre to a metre in a year – patience is always required when growing trees.

The *Buddleja saligna*, False Olive, has become one of the most popular indigenous trees

However, being fast does have its disadvantages. Sometimes the *Buddleja* can look 'scruffy' after a few years, and because the branches are not as strong as other species, they often tend to droop after heavy rains, especially if they are carrying masses of flowers. Despite these potential drawbacks this is still a worthwhile species to choose. If you allow it to grow into its

natural form, you will be rewarded with masses of white flowers which attract a multitude of insects, and it's not uncommon to see this plant covered in beetles, ants, butterflies and bees during the flowering season.



facebook.com/gautengsmallholder



Buddleja saligna or False Olive

in Gauteng, due partly to its relatively fast growth. It can reach a height of 3-4 m in just a few years, thus providing excellent screening in the shortest possible time.

SPARTS MOTOR SPARES

Tel: 011 967 1295
011 967 2151
Cell: 072 041 7819
Fax: 011 963 0473
086 218 4686
Email: spartscs@mweb.co.za



261 & 262 Stanley Road, Pomona, Kempton Park, CNR of Stanley & High Road
Monday to Friday 07:30 to 17:00, Saturday 08:00 to 13:00, Certain Public Holidays 08:00 to 12:30



A-Frame house



**COMPLETE
YOUR HOUSE
WITH OUR
STEEL
STRUCTURE**

Building plan supplied
Price excludes building work

210m² STEEL STRUCTURE ERECTED

R201 400 excl VAT
Steel structure for
3 bedrooms and 2 bathrooms

101m² STEEL STRUCTURE ERECTED

R126 300 excl VAT
Steel structure for
2 bedrooms and 1 bathroom
with carport



www.aframe.co.za

Pieter 082 497 4247 | info@aframe.co.za |

Tel: 011 675 7491 | Fax: 086 610 4461



STEEL FRAMES

Buildings | Factories and Warehouses | Design and Construction



BENTONITE

NATURAL CLAY LINER

For sealing Earth Dams ● Repairing leaking Earth Dams

- Easy to use
- Economical - only 1 x 40kg bag per 3 square metres
- Environmentally friendly

SALES: Call 0861 113 965 Fax 011 646-2144
For implementation guide visit: www.clay.co.za

Ride-on mowers, Lawnmowers, Brush Cutters, Earth Augers, Blowers, Slashers, Sweepers, Chainsaws, Water Pumps, Trimmers, Pole Pruners, Mist Blowers, Granular Spreaders, Fire Fighters, Engines, ETC.

KUDU

Industrial Heavy Duty Mower
With: BRIGGS SERIES 2100 Engine



R19,000
Excl. VAT

Contact us for
other Kudu engine prices

KOHLER HONDA
ENGINES

Used by most
Municipalities

Cub Cadet

Ride-on
Lawn Tractor

*LT1: 96 cm / 38"
7.8 kW / 420 cc,
TRANSMATIC
R22,500
Excl. VAT

*LT2: 96 cm / 38"
7.8 kW / 420 cc,
HYDROSTATIC
R24,500
Excl. VAT



Cub Cadet

Zero-Turn
Ride-on
Mower



*XZ1107: 107 cm / 42", 12.5 kW / 547 cc,
Cub Cadet OHV Engine, Dual Hydrostatic,
Lap Bar Handles.....**R47,000** Excl. VAT

*XZ2107: 107 cm / 42", 10 kW / 603 cc,
Kawasaki OHV Engine, Dual Hydrostatic,
Steering Wheel.....**R52,000** Excl. VAT

*XZ1127: 127 cm / 50", 12.0 kW / 726 cc,
Kawasaki OHV Engine, Dual Hydrostatic,
Lap Bar Handles.....**R58,000** Excl. VAT

*XZ1137: 137 cm / 54", 12.5 kW / 726 cc,
Kawasaki OHV Engine, Dual Hydrostatic,
Lap Bar Handles.....**R60,000** Excl. VAT

MITSUBISHI

TU43 Mitsubishi
43 cc Brush cutter
engine only



R1,950
Excl. VAT

MITSUBISHI
43 cc
Brush Cutter



R2,950
Excl. VAT

Kawasaki

Engines

TJ45 Brush Cutter
45.4 cc

R4,250
Excl. VAT



TJ53
Brush Cutter
53.2 cc

R5,100
Excl. VAT

Kawasaki

Engines

FJ180V Engine
179 cc, 6 hp,
4.5 kW

R2,850
Excl. VAT



POWER PRO
Engines



5 hp Petrol
Horizontal
Engine
183 cc

R1,950
Excl. VAT

Petrol Horizontal Engine



9 hp,
Tapered
Shaft

R1,950
Excl. VAT

Diesel Horizontal Engine
Dual Start,
458 cc,
10 hp,

(Fits Kudu
Lawnmower)

R8,625
Excl. VAT



PTO Shafts



*PTO Shaft: M60 1,5 meter
R1,150 Excl. VAT

*PTO Shaft with Slip Clutch:
M60 1,5 m - **R2,025** Excl. VAT

*PTO M70 1,8 meter
R1,430 Excl. VAT

*PTO Shaft with Slip Clutch:
M70 1,8 m - **R2,170** Excl. VAT

DOLMAR Makita

Industrial
Chainsaws



42.4 cc, 16" Bar.... **R 3,900**
50 cc, 18" Bar..... **R 5,400**
61 cc, 24" Bar..... **R 6,600**
72.6 cc, 20" Bar.... **R 7,600**
78.5 cc, 24" Bar.... **R 8,300**
Prices Excl. VAT

Makita



Power Cutter

60.7 cc 2-Stroke Engine, 3.2 kW,
Max Cutting Depth: 110 mm
R8,500 Excl. VAT

ZENOAH KOMATSU

40.1 cc

R3,200
Excl. VAT



Komatsu
(Husqvarna)
Chainsaws

Hoover Mower with Cart

"Ideal for Golf Courses"



4/3600 rpm, 122 cc
PS120 Air Cooled Eng
Grass Cutting Height:
18-45 mm

R6,500
Excl. VAT

FIELDMASTER

Slasher: 1.2 meter - 48"

R22,000
Excl. VAT



GRAZER

Rotary 750 mm cut
with 10.5 hp
Briggs & Stratton
Engine
R19,950
Excl. VAT



Tractor Mounted Post Hole Digger



PTO driven

(Drill Bit not incl.)

R11,250
Excl. VAT



3" Petrol Water Pump

R1,600
Excl. VAT

175Y Engine



Fire Fighter

Power Pro175Y Engine
Flow Rate:
6 - 28 Litre/min



R3,800
Excl. VAT

Original John Deere,
Husqvarna & Murray
Grasscatchers

R2,500
Excl. VAT



TEL: 011 730 3400/FAX: 011 814 2345 Website: www.turfmaster.co.za

Email: info@turfmaster.co.za Address: Cnr. Klippen Road & Third Avenue, Vorsterkroon, Nigel

Nett PRICES EXCL. VAT

Valid until end July 2017 or while stocks last.

PRICES ARE PER UNIT, EXCL. DELIVERY & EXCL. VAT. VALID FOR COD PURCHASES ONLY. WHILE STOCKS LAST. MODELS AVAILABLE MAY DIFFER FROM ILLUSTRATIONS. E&EO.

Works for a nature lover's library

Field Guide to Succulents in Southern Africa

Southern Africa is one of the most succulent-rich areas in the world. Of the world's approximately 10 000 succulent species, nearly half originate in southern Africa. Worldwide there is a tremendous active interest in the succulents of the region.

So the newly launched book *Field Guide to Succulents in Southern Africa*, by Gideon Smith, Neil R. Crouch and Estrela Figueiredo will be widely welcomed.

Succulents may be described as plants which are adapted to store water in their leaves, branches or stem bases in order to be able to survive long periods without water. These plants come in all shapes and sizes, from trees such as the baobab at more than 20m tall, to miniature soil huggers, just a few millimetres high, which mimic their pebble-desert surroundings.

This user-friendly, richly illustrated field guide features more than 700 southern African succulents, focusing on the most interesting and commonly encountered species.

An introduction to families and their key features will help readers identify the relevant plant group, while concise accounts describing the plants' diagnostic features, along with distribution maps, will enable quick ID of species.

More than just an ID guide for plant lovers, this book will inspire gardeners who are turning to indigenous, low-maintenance and waterwise plants for cultivation. The book is published by Penguin Random house and the recommended price is R315.



Songs of Love and War ~ The Dark Heart of Bird Behaviour

There is a wide variety of bird books available, but this one is somewhat different in focus: *Songs of Love and War ~ The Dark Heart of Bird Behaviour*, by Dominic Couzens (Bloomsbury, 2017), R389.

Continued on page 41

TRACTOR MECH

Vaaljapie Specialist

Restoration of New & Old Tractors

For all:

- Sales
- Spares
- Rebuilds
- Service & Repairs

Johan Brouwer
072 576 2392

Martina Brouwer
072 861 6980

of your:

- Tractors
- Slashers
- Implements
- Stationary Motors

403 Bakenkloof Street Pretoria North 0182

www

TheSunPays

co.za



100L Low pressure solar geyser from **R3290**

Auxiliary tank included

Solar panels @ **R7⁵⁸** per watt

31 Other models on website
www.thesunpays.co.za

082515 1655 / 012 734 0915

All Prices include Vat/ Free delivery 100km from Cullinan/
Full prices and Specs on Website

ROOF SHEETING



Buy direct from factory

ADVANTAGES:

- Shatterproof, Weather & Hail Resistant
- UV Protected
- Over 70% Light Transmission
- **Product is 2,5mm thick**
- Domestic & Industrial
- Easy to Install - DIY
- Choice of 4 Colours
- 7 Year Guarantee
- Cheaper than Fibreglass

We Deliver

IDEAL FOR:

- Patios
- Carports
- Zozo Huts
- Hot Houses
- Pool Houses
- Factory Skylights, etc



PLEASE CONTACT

PAUL 084 652 8310
info@4eversheeting.co.za
www.4eversheeting.co.za

4EVER SHEETING
POLYETHYLENE ROOF SHEETING

Times are a' changing
.... and so are we

Announcing:

GAUTENG
SMALLHOLDER
Magazine

- * Read the magazine ONLINE as published
- * DOWNLOAD your own copy to read at your leisure.

PLUS:

- Classified ads published BEFORE the printed magazine appears
- Events listed BEFORE the printed magazine appears
- Ask questions - get answers
- Wider coverage for ALL SA smallholders
- Useful links and source information on a variety of topics
- No sign-in or membership required

Online



Constantly changing,
always up to date

Great online advertising
opportunities to an already
established readership

simply go to

www.sasmallholder.co.za

and click on the cover picture to access the latest edition

For queries

011 979-5088

graphics@gautengsmallholder.com



From page 39

The author delves into bird behaviour and uncovers its purpose and meaning. But this is more than just an inside look at bird behaviour, as this book also represents a personal journey of discovery. What starts as a desire to learn more about the birds encountered on a regular father-and-son walk through the woods leads to a



realisation that a bird's life is very far from the idyllic scene that can often be glimpsed by the casual birdwatcher. Actually a bird's life is often unusual and surprising, but above all it is brief and much darker than you might think.

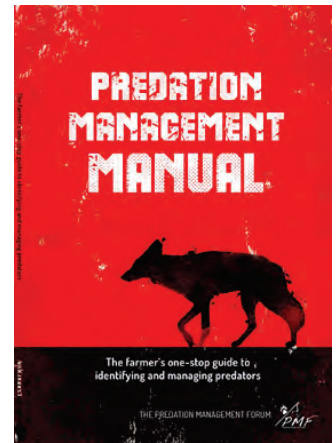
Predation Management Forum Manual & Code of Best Practice

Livestock owners on smallholdings are always aware of the risk of losing animals because of predators. The Predation Management Forum (PMF) provides a platform for liaison and coordination of activities of commodity organisations in the livestock and game ranching sectors, aimed at reducing losses incurred as a result of predation by means of ecologically and ethically acceptable methods which protect the biodiversity of South Africa. The wool, mohair, red meat and wildlife industries have pooled their resources to create a space for collating and analysing reliable information on predation and predation management methods, which will be made available continuously to a management information system (MIS). This system, a national

asset, will make information readily available to all users. The forum has partnered with Agri Connect to produce a predation management manual in collaboration with industry experts Dr Gerhard Verdoorn and Niel Viljoen. This manual is a one-stop tool aimed at helping farmers and smallholders to identify the predators on their properties and to choose the best methods to control them.

The manual gives information about the PMF and its Code of best practices. It introduces the concept of integrated predation management, discussing preventative and remedial measures. Veld, small-game and livestock management are unpacked, followed by a detailed chapter on identification of predators. Readers are also helped at the post-predation stage in terms of identifying cause of livestock death.

The manual is available, free of charge, in English and Afrikaans. Go to www.sasmallholder.co.za and find the download under the Q&A tab.



BANG-A-LERT

Stop crime on your property
Affordable & Practical
6 000 units sold in South Africa
Simple Installation
No Power Required
Dealer Prices for more than 10 units
Mason Engineering
083 611 2857
www.bangalert.co.za

Wordways Ceremonies

Ceremonies from the cradle to the grave

Non-Religious Ceremonies
Funeral Celebrancy
Family Celebrancy

Vanessa Bower
Cell: 083 507 3886
Email: wordwayscc@mweb.co.za
www.wordwaysceremonies.com

Fire beater

FIGHT VELD FIRES EFFECTIVELY

Get yours TODAY: It's the LAW!!

1,8m long, thick but lightweight wooden handle keeps user away from smoke & flame

Unbreakable Fastening

Made from recycled rubber belting (not strips)

Only R90,00 cash & collect
Price includes Vat.
Trade enquiries welcome
Scrap belting also available

To order call Derek Whittall 078-706-6456

Solid rubber sheet SMOTHERS flames FAST!



The book that every smallholder needs

Contents include:

- Infrastructure (fencing, septic tanks, irrigation etc)
- Keeping Livestock
- Crop Production
- Pasture Management
- Farm & Garden Machinery
- Legislation applicable to smallholders
- ... and much more, in 34 information-packed chapters!



**LIMITED STOCK LEFT ~
Order your copy TODAY...**

Only R180-00 VAT and delivery included

**34 chapters,
fully-illustrated,
208 pages**

(Complete & email to bowford@gmail.com or fax to 086 602 3882

Please send me copies of the Smallholder's Companion 2014.

Payment can be made by postal order or EFT. (We will supply our bank details on request)

Name:

Postal Address:

Tel/Cel number:

**Phone 011 979-5088 or email bowford@gmail.com for EFT & delivery details.
A receipted Tax Invoice will be issued to you as acknowledgment of your order &
you will be notified of your Post Office tracking number or other delivery details.**

GAUTENG SMALLHOLDER CLASSIFIED ADVERTISEMENTS

**ABSOLUTELY FREE TO
PRIVATE INDIVIDUALS.
CONDITIONS:**

1. Animals (including horses), birds, poultry, fodder, bedding, etc must be paid for as SuperSmalls (see p 48).
2. Wanted ads, services of any kind are also SuperSmalls.
4. No Commercial ads accepted as classifieds (see display ad tariff - p 1).
5. Placement maximum of 3 months

SUPERSMALLS

Entries in this yellow-shaded section cost R120 VAT included for 25 words, plus R1/word thereafter.

plaas – verkieslik naby Eucalyptus (bloekombome) of soortgelyke goeie voer. Kontak Sharon 083 449-8980
Geregistreerde Byeboere

alarm, www.stopthieves.co.za or contact Colin 079 180-2853.

Stainless steel farm donkey. 210 litre, fire-heated. Constant hot water. From R3 730 incl VAT. Contact 011 762-1212, 082 456-0973 or stainlesspecial@absamail.co.za.

EQUINE REQUISITES

Eggbutt mullenmouth bit, nickel/stainless, 5 inch. R100. Pete 072 587-137

FARMING REQUISITES

Broeikas in werkende toestand, Kameeldrif Wes, Pretoria 076 286-0416

Tweede handse Consol bottels vir inle van vrugte en groente, 1 litre en 2 litre. In bokse van 12. R100 per boks. Pretoria 082 924-3076

MISCELLANEOUS

Tile saw electric R600, rocking chair R250, alarm system R250, HiFi speakers R50, Antique Chesterfield needs renovation R650, 7,5m 1,8 weldmesh R100, 50+m 40mm LDPE pipe R200. Doornrandjie area 083-633-3193

Trampoline mat, 3m dia, good condition R500. Danie 78 885-1425/011 963 3058

Septic Treatment
Extend your septic tank pump-out intervals



- No smell after treatment
- Dissolves all solids in septic tank
Wholesale and Retail
082 304 9256

WANTED

Single-tine ripper and 2-share mouldboard plough in reasonable condition at a reasonable price. Will collect. Call Donald 082 648-7633

Gesoeek: Stukkende tweede-handse brei masjiene benodig vir parte. Vir skool vir mense met geleerdheids probleme. Rosa 082 684-9534

Gesoeek: Veilige plekke om byekorwe te

FOR SALE

LIVESTOCK & POULTRY

Black Australorp Chickens for Sale. Pure bred/show quality guaranteed – Excellent health. Vaccinated for Newcastle, Bronchitis, Fowl Pox and Coryza. 1 week R25, with increments of R10 per week. Point of lay, 20-23 week hens R300 each. Show quality roosters R450 each. Natural born/incubator 071 878 9206 – Petit

Adorable fluffy yellow day-old Pekin ducklings R14,00 each, collected from farm 074 550-4315 Magaliesberg

MISCELLANEOUS

Stop thieves: Outdoor wireless alarms for houses, cottages, outbuildings. 4 outdoor wireless sensors, Main control panel, 2 remote controls, siren, battery, etc. R2 800 installed in JHB or DIY. Also cut fence

PROPERTY FOR SALE

Bela Bela plot for sale: 8,57 Ha plot, 2 houses, outbuildings, Eskom, fence surrounding property. R750 000. Phone 082 856-8624 / 083 360-2990

FODDER, PLANTS, PRODUCE ETC

Lucerne for sale. Bales and milled lucerne available. Bales @ R80 ea. Milled lucerne @ R120 per 12kg (approx) bag. 082 569-1679

Mixed grass square bales, 12-15kg each x 130. Veld grass, B-grade, containing Smutsfinger, eragrostis, rooigras etc. Ideal for cattle. R10 per bale collected in Bredell. Pete 072 587-9137

Fruit and nut trees. Olive, peach, nectarine, plum, almond, apricot, walnut, prune, pomegranate, pecan nut, apple, cherry, pear, fig, quince, mulberry, lemon and grape vines. Contact Douw 084 506-5125 Vereeniging.

FOR SALE

Entries in this section are FREE OF CHARGE, but are for used items, private property sales/rentals and employment offered/wanted only.

Yellow Maize



Crushed Mealies
50kg ~ R165

Heather 083 313 6510
011 416 3306

MacBee
Registered Beekeepers

Wanted:
Secure sites to place beehives. Call us to assess the viability of your property.

Contact Sharon
083 449-8980
macbeehoney@gmail.com

**PIGS
WANTED**

All sizes & colours

We regret no potbellies

CASH BUYER
072 8666 299

**Plot
Services**



- Grass Cutting
- Ripping
- Ploughing
- Site Clearance

**Best Rates
Best Service**

Around PTA only
Call Marius today
072 726 3920

ALFA KUIKENPLAAS CHICKS
suppliers of day old broilers

A Grade Cobb 500 and Ross 308
We deliver to North West, Northern Cape, Gauteng, Mpumalanga, Limpopo and Free State Provinces. All chicks vaccinated against Newcastle disease. Any other vaccinations also available. A wide range of equipment, cleaning products and medication available. We also assist with important information.

012 561 1205 / 061 430 0454
sales@alfachicks.co.za
www.alfachicks.co.za

**It's
Sheep Shearing
Season!**

SHEEP SHEARING SERVICE
SKAAP SKEER DIENS

082 602 4462
082 878 5623



DIARY

ATTENTION CRAFT MARKETS, CLUBS ETC: If you would like details of your events included in the Diary, please fax or email your information to the Editor. For non-commercial enterprises this service is FREE.

NOTE: FARMERS' & CRAFT MARKETS. For a listing of REGULARLY HELD markets and fairs please see the separate section on page 47. Only markets that are held infrequently are now listed in this calendar section.

Every Sunday
Cattle drive with City Slickers breakfast, Diamond X Cowboy Ranch, near Cullinan. Call Rudan on 082 410-3180 horses@diamondxrancho.co.za, www.diamondx.co.za., R500 per person.

Mnandi Methodist Church, 09:00, Mnandi Centre, cnr Tulip and Short Streets, Jen 012 651-5509. Gail 072 477-0708., A small community who worship together. We have a Youth and Children's church.

Premier Mine Presbyterian Church, Lower Oak Ave, Cullinan. Garden of Remembrance (Columbarium), 079 060-9990 or 012 734-1640, Worship and Sunday school. Holy Communion for all on the 1st Sunday of every month.

Every Monday
Alcoholics Anonymous. 'Courage to Change' Group meeting, 19:30, Benoni Agricultural Holdings, Marcus 082 042-

7730. Warren 082 335-0049. Glen 072 239-3024., If you want to drink – that's your problem! If you want to stop – that's our problem! No fees; no dues; just concerned fellowship.

2017

July

1: Snake Awareness First Aid For Snakebite and Venomous Snake Handling, Cradle Moon Lakeside Lodge, Gauteng. Email Ashley -

admin@africansnakebiteinstitute.com
1: Crafts in the Park Food & Craft Market, Bokkie Park, Southvale Road, Parkdene, Boksburg. 09:00 to 14:30. Free entrance. Up to 80 craft and food stalls, live music. Call 072 713-3332 or info@craftsinthepark.co.za

2: Country Fair at Uncle Tim's Centre, High Road, Brentwood, Benoni. Call 010 590-8003

3-7: Cattle pregnancy testing and calf rearing, five-day course, Krugersdorp. Call 078 546-7985

4-5: Dairy Processing Course: Yoghurt and Maas Manufacturing (2 days), ARC Animal Production, Irene. Call Annetjie Loubser, aloubser@arc.agric.za, tel 012 672-9153 or Thabisho Phasha, PhashaT@arc.agric.za, tel 012 672-7273

9: Full moon
6-9: SA Green Industries Council training in the identification and management of invasive alien species, Pretoria. Four

modules of one day each. Cost per module R912. Contact Hazel or Kay at Tel 011 723-9000 or download the forms at www.invasives.org.za/legislation/item/936-sagic-invasive-species-training.

9: Antiques & Craft Fair at Uncle Tim's Centre, High Road, Brentwood, Benoni. Call 010 590-8003

18-21: Dairy Processing Course: Cheese Manufacturing (4 days), ARC Animal Production, Irene. Call Annetjie Loubser, aloubser@arc.agric.za, tel 012 672-9153 or Thabisho Phasha, PhashaT@arc.agric.za, tel 012 672-7273

23: New moon
24-26: Sheep and goats course, Krugersdorp. Call 078 546-7985

28 – 30: Aloe Weekend at Witkoppen Wildflower Nursery, 363 Valley Rd, North Riding. 8:00 - 17:00. Ph 011 516-0262

29: Topic: Experience Chelsea 2017 at Garden World, Muldersdrift. Join Kirstenbosch-SA Chelsea designer David Davidson & Efeko for an informative morning on David's experiences at the Chelsea Flower Show in London. 09h30 for 10h00. Cost: R80 pp & includes the talk & slide show presentation, refreshments & fabulous prize giveaways. For more information & to book, contact Garden World on 011 957 2545, 011 956 3003 or 083 997 6142 or visit www.gardenworld.co.za

29: Snake Awareness First Aid For Snakebite and Venomous Snake Handling, Cradle Moon Lakeside Lodge, Gauteng. Email Ashley -

admin@africansnakebiteinstitute.com

30: Advanced Snake Handling, Cradle Moon Lakeside Lodge, Gauteng. Email Ashley - admin@africansnakebiteinstitute.com

August

5: Mother & Child Fun Day with a Flower Arranging Course at Garden World, Muldersdrift. Join Colleen McGillivray and Interflora for a fun-filled morning where we will show you how to make a beautiful flower arrangement, the perfect workshop for mother & child. 09h30 for 10h00. Cost: R130 per child & includes the workshop, refreshments as well as fabulous prize giveaways. For more information & to book, contact Garden World on 011 957 2545, 011 956 3003 or 083 997 6142 or visit www.gardenworld.co.za

5: Crafts in the Park Food & Craft Market, Bokkie Park, Southvale Road, Parkdene, Boksburg. 09:00 to 14:30. Free entrance. Up to 80 craft and food stalls, live music. Call 072 713-3332 or info@craftsinthepark.co.za

6: Country Fair at Uncle Tim's Centre, High Road, Brentwood, Benoni. Call 010 590-8003

Free Classified Ads

PROPERTY FOR SALE/TO LET

Bredell: 2 Bedroom secure flat, regret no pets R5500 pm T&C apply. Jono 082 583 5793

Pretoria Uitzig: 1,7Ha te koop. R1,2 miljoen onderhandelbaar. 2 slk huis met baie buitegeboue, sterk boorgat. Ideaal vir iemand wat nog wil besig bly. Baie stil,

rustige area, geen deurloop. Eienaar gaan af treeoord toe. Skakel And 076 945-1524 n/u.

Pretoria Uitzig: 2 Ha te koop tussen Hartbeespoortdam en stad. Netjiese 4 slk, 3 badk, moderne kombuis, TV/sit/et kamers. Veilige braaiarea, dubbel motorhuis, netjiese tuin met besproeiing, sterk boorgat. Baie stil en mooi area. Eienaar tree af. R1,6 milj 072 390-8892

Buffelspoort: property with 4 large houses plus cottage. Each house has own beautiful garden, abundant free mountain water, rental income R30 000 per month. Offers on R2,8 million, Contact owner 073 302-8380

Bela Bela: 8,57Ha plot, 2 houses and

outbuildings. Eskom. Fence surrounding property. R750 000. Phone 082 856-8624/083 360-2990

TOOLS

Record vice. Table top cut-off machine with detachable angle grinder plus base plate that fits over vice. R2 000. 078 885-1425/011 963-3058 Danie

TRACTORS & IMPLEMENTS

1973 International 724 for sale. Tractor is in very good condition. Tel 082 569-1679

EMPLOYMENT WANTED

Looking for employment. Experience in all farm construction & maintenance, electrical, solar & generators, borehole pumps, plumbing & airconditioning. John 076 637 0853

Buyers of ALL Scrap Metal

TURN YOUR SCRAP INTO CASH



Old cars, trucks, tractors, trailers, machinery etc

We Cut, We Remove

Throughout Gauteng

Simunye Scrap Metal & Recycling
Call Andre 079 547-4249

LIVESTOCK SALES

Auctions: Bronkhorstspuit - Every Tuesday
Gys Taute 083 253 6906

Delmas - 2nd & 4th Thursday
Johan Taute 073 204 7646

Belfast: Wednesdays - Ermelo: Thursdays - Standerton: Fridays

Vleissentraal Ermelo
017 819 1106
www.vleissentraal.co.za



Snake Catcher

Protect Guests, Family, Friends, Animals, Livestock



Only R 1295.00 & FREE Postage
Call or SMS Ralph: +27 825730710
Or email: SnakeAlert@Global.co.za

PRETORIA CHICKS

Day-old Broilers
Small numbers for smallholders

Hand-sorted
Ross 308 & Cobb

Collect at
Lyttelton,
Bronkhorstspuit,
& near Bapsfontein

083-221-1247

DIARY



3: National Women's Day
9: Dairy Day at Belnori Boutique Cheesery, Nest Park, Bapsfontein. 09:30 for 10:00. Wide range of speakers as well as exhibitions and stalls. Food on sale. Booking essential. Email Rina Belcher on belnori220@gmail.com
9: Makeover with Hannon Bothma, the Glam Guru, at Garden World, Muldersdrift. Rediscover your own beauty potential and look at yourself in the mirror again with a fresh new perspective. 09h30 for 10h00
Cost: R200 pp & includes the demonstration, refreshments & fabulous prize giveaways. For more information & to book, contact Garden World on 011 957 2545, 011 956 3003 or 083 997 6142 or visit www.gardenworld.co.za
12: Cooking Demo with Johan 'Panda' du Preez from Starke Ayres at Garden World, Muldersdrift. A fun filled, informative morning with gardening and cooking professional Panda. He will teach you how to sow summer vegetable seeds with flair, and how to whip up a delicious meal with his own brand of joie de vivre! 09h30 for 10h00. Cost: R150 pp & includes the talk / demonstration, a goodie bag, refreshments & fabulous prize giveaways. For more information & to book, contact Garden World on 011 957 2545, 011 956 3003 or 083 997 6142 or visit www.gardenworld.co.za
13: Antiques & Craft Fair at Uncle Tim's Centre, High Road, Brentwood, Benoni. Call 010 590-8003
15-18: Introduction Course to Beef Cattle Management (4 days), ARC Animal Production, Irene. R2 680. Call Annetjie Loubser, aloubser@arc.agric.za, tel 012 672-9153 or Thabisho Phasha, PhashaT@arc.agric.za, tel 012 672-7273
19: 50 Shades of Green with Denny van

Wee & Leonie Coulson at Garden World, Muldersdrift. Denny van Wee (export manager from Pokon, Netherlands) will tell you more about Pokon Plant Foods & how they will help your plants grow, with Leonie telling you more about the interesting 50 Shades of Green Plants. : 09h30 for 10h00. Cost: R100 pp & includes the talk, refreshments as well as fabulous prize giveaways. For more information & to book, contact Garden World on 011 957 2545, 011 956 3003 or 083 997 6142 or visit www.gardenworld.co.za
21: New moon
21-25: Introductory Course in Poultry Production (5 days), ARC Animal Production, Irene. Call Annetjie Loubser, aloubser@arc.agric.za, tel 012 672-9153 or Thabisho Phasha, PhashaT@arc.agric.za, tel 012 672-7273
26: Growing Edible Flowers in your Spring Garden at Garden World, Muldersdrift. Join Sandy Roberts for her talk on growing edible flowers in your spring garden with recipes & delicious samples to taste. The Margaret Roberts books, Herb Journal & new 'Indigenous Plants' book that she co-wrote with Sandy will be on sale. 09h30 for 10h00. Cost: R100 pp & includes the talk / demonstration, a goodie bag, refreshments & fabulous prize giveaways. For more information & to book, contact Garden World on 011 957 2545, 011 956 3003 or 083 997 6142 or visit www.gardenworld.co.za
26: In Tune with Nature at Garden World, Muldersdrift. Join MayFord Seeds for a delightful spring afternoon laced with good gardening advice from gardening editor Tanya Visser, paired with heavenly music & song brought to you by SA's most well-known conductor, Richard Cock. 13h00 for 13h30. Cost: R100 pp & includes the event, a goodie bag, refreshments & fabulous prize giveaways. For more information & to book, contact Garden World on 011 957 2545, 011 956 3003 or 083 997 6142 or visit www.gardenworld.co.za
30: Sheep Day, organised by Hi-Performance Feeds, Meyerton. Inoculation and de-worming, planning and management of pastures, optimal feeding and livestock management. Venue: Zomerlust. Cost R100. Booking essential, by 25 August. Vall 016 366-1398 or 083 676-8607
End August, dates to be confirmed: Second

Purebred Dexter Spring Show at the Willem Prinsloo Agricultural Museum, Rayton district. For details contact Kobus van der Linder 082 783-9605

September

2: Paint your own Unique Wall Clock at Garden World, Muldersdrift. Trudie Ayres from Mulberry Lane will show you how to paint your own unique Wall Clock using Annie Sloan Chalk Paint. 09h00 for 09h30. Cost: R350 pp & includes the workshop and everything that you will need to create your Wall Clock - including the clock movement & hands (clock diameter 35 cm), refreshments & fabulous prize giveaways. For more information & to book, contact Garden World on 011 957 2545, 011 956 3003 or 083 997 6142 or visit www.gardenworld.co.za
2: Crafts in the Park Food & Craft Market, Bokkie Park, Southvale Road, Parkdene, Boksburg. 09:00 to 14:30. Free entrance. Up to 80 craft and food stalls, live music. Call 072 713-3332 or info@craftsinthepark.co.za
3: Country Fair at Uncle Tim's Centre, High Road, Brentwood, Benoni. Call 010 590-8003
5-7: Artificial Insemination of Cattle Course (3 days), ARC Animal Production, Irene. Call Annetjie Loubser, aloubser@arc.agric.za, tel 012 672-9153 or Thabisho Phasha, PhashaT@arc.agric.za, tel 012 672-7273
6: Full moon
10: Antiques & Craft Fair at Uncle Tim's Centre, High Road, Brentwood, Benoni. Call 010 590-8003
11-15: : Introductory Course to Small Stock Management (5 days), ARC Animal Production, Irene. Call Annetjie Loubser, aloubser@arc.agric.za, tel 012 672-9153 or Thabisho Phasha, PhashaT@arc.agric.za, tel 012 672-7273
18-22: Aquaculture Management Course (5 days), ARC Animal Production, Irene. R2 680. Call Annetjie Loubser, aloubser@arc.agric.za, tel 012 672-9153 or Thabisho Phasha, PhashaT@arc.agric.za, tel 012 672-7273
20: New moon
22: Equinox
24: Heritage Day

25: Heritage Day spillover holiday

October

1: Country Fair at Uncle Tim's Centre, High Road, Brentwood, Benoni. Call 010 590-8003
5: Full moon
7: Crafts in the Park Food & Craft Market, Bokkie Park, Southvale Road, Parkdene, Boksburg. 09:00 to 14:30. Free entrance. Up to 80 craft and food stalls, live music. Call 072 713-3332 or info@craftsinthepark.co.za
8: Antiques & Craft Fair at Uncle Tim's Centre, High Road, Brentwood, Benoni. Call 010 590-8003
9-13: Meat Processing Course (4 days), ARC Animal Production, Irene. Call Annetjie Loubser, aloubser@arc.agric.za, tel 012 672-9153 or Thabisho Phasha, PhashaT@arc.agric.za, tel 012 672-7273
10: 14 hours of daylight in Gauteng (required by chickens to lay). Ends 12 March.
16-20: Introductory Course in Poultry Production (5 days), ARC Animal Production, Irene. Call Annetjie Loubser, aloubser@arc.agric.za, tel 012 672-9153 or Thabisho Phasha, PhashaT@arc.agric.za, tel 012 672-7273
19: New moon

November

4: Full moon
4: Crafts in the Park Food & Craft Market, Bokkie Park, Southvale Road, Parkdene, Boksburg. 09:00 to 14:30. Free entrance. Up to 80 craft and food stalls, live music. Call 072 713-3332 or info@craftsinthepark.co.za
7-10: Introductory Course in Pig Production (4 days), ARC Animal Production, Irene. R2 680. Call Annetjie Loubser, aloubser@arc.agric.za, tel 012 672-9153 or Thabisho Phasha, PhashaT@arc.agric.za, tel 012 672-7273
18: New moon
22-23: Introductory Course to Veld/Rangeland Management (2 days), ARC Animal Production, Irene. Call Annetjie Loubser, tel 012 672-9153

Fruit Trees
Olive, peach, nectarine, plum, almond, apricot, walnut, prune, pomegranate, pecan nut, apple, cherry, pear, fig, quince, mulberry, lemon and grape vines.
Shade Trees
Vrugteboom
Olyf, perse, kaal perskes, pruim, amandel, appelkoois, okkerneut, pruimdant, granaat, druiwe, pekanneut, appel, kersie, peer, vy, kweper, moerbeel en suurlemoen.
Skadubome
Vereeniging
Douw 084 506 5125

Alpacas For Sale
Magicalpaca's Farm
in Kempton Park offers:
A selection of pedigree Alpacas at competitive prices
Coverings available from stud quality herd sires
Call Lee Ermen
082 455-4288
bounty@iafrica.com

WIRE WORX
Suppliers of:
• BARBED WIRE • STANDARDS & DROPPERS
• NETTING WIRE • B GRADE WELDED MESH
• WELDED MESH • GATES, POSTS & STAYS
• GALVANISED WIRE • DIAMOND MESH WIRE
Welded Mesh 1.8 x 100 x 50 x 30m = R85
We only sell quality products!
Kerry: 084 840 0409
kerry.wire@hotmail.com

Voer, Beeste, Skape en Bokke te koop
073 358 8541
Op R559 tussen
Randfontein en Carletonville

Clovelly
Day-old Layers
2 & 4 Week old Layers
Day-old Broilers
Day-old White Rocks
Delmas
083 393 0935

Bekostigbare implemente geskik vir die klein boer
SKRAPER
Lem is VERSTELBAAR
R2 000
• 1.5m wyd
• Geskik vir klein trekkers
BOSSIEKAPPER
Kante is VERSTELBAAR
R6 000
• 1.2m wyd
• Sonder PTO
• 1.5m ook beskikbaar
STERKARM
Pas op driepunt (Cat 1)
R1 600
• 2.5m lank
• Slasher uitgesluit
• Tel swaar items op
Pryse sluit BTW in
Aflewering in Gauteng kan gereel word
072 153 8776

Dikgogo Fela
Chicken Abattoir
We slaughter for the Smallholder
Certified Halaal
LIVE & SLAUGHTERED
Chicken Products for sale.
Open to the PUBLIC!
Randfontein
S 26°12.310' E 027°36.156'
083 401 3002

Can't find the ?
GAUTENG SMALLHOLDER MAGAZINE
JUST ASK...

Ask your shopkeeper to stock the magazine and we will deliver copies to the shop for you*
**Subject to certain conditions*
For enquiries phone
076 176 7392

Alternatively, you can subscribe and receive the magazine by mail. Simply complete the coupon found elsewhere in this copy and mail it with your payment for R210 for a year.

Fire beater
FIGHT VELD FIRES EFFECTIVELY
Get yours TODAY:
It's the LAW!!

1,8m long, thick but lightweight wooden handle keeps user away from smoke & flame
Unbreakable Fastening
Made from recycled rubber belting (not strips)
Only R90,00 cash & collect
Price includes Vat.
Trade enquiries welcome
Scrap belting also available
To order call
Derek Whittall
078-706-6456

Solid rubber sheet SMOTHERS flames FAST!

Having difficulty finding a copy of
GAUTENG SMALLHOLDER MAGAZINE
at your local store?

SUBSCRIBE
and we will send it monthly by post

Please post me the Gauteng Smallholder for the next 12 editions. My cheque/ postal order for **R210-00** made payable to **BOWFORD PUBLICATIONS**, is enclosed.

NAME: _____

Tel: _____ e-mail: _____

Postal Address: _____

_____ code _____

Please make cheques or postal orders payable to **BOWFORD PUBLICATIONS (PTY) LTD** (not the Smallholder). Post coupon & payment to: Subscriptions, Box 14648, Bredell 1623 or phone 011 979 5088 for our banking details if you prefer to do an EFT instead.

R210
for 12 editions

Regular Gauteng Farmers' Food Markets

NOTE: This is a listing ONLY of markets held to a regular weekly or monthly schedule. Markets held less frequently are listed in the DIARY section of the magazine and we urge readers to check each month for dates and events of interest. We would like this list of food markets to be as comprehensive as possible. If you know of farmers' food markets that are not listed here, please email us the contact details of the organisers, and details of the market. Only FOOD markets are included. Similarly, if you know of markets in this list that have CLOSED please inform us so that we can delete incorrect or outdated information. We invite you to tell us of your experiences when visiting these markets so that we can better inform our readers. Were they as advertised? Was the produce on sale plentiful, well-priced, well-presented and fresh? Email your comments to editor@gautengsmallholder.com

DAY	WHAT	WHEN	WHERE	WHO TO CONTACT	WHAT TO EXPECT
Thursday					
Every Thursday	Bryanston Organic & Natural Market	09:00 to 15:00	Culross Road (off Main Road), Bryanston.	Konrad or Glenda 011 706-3671 or glenda@bryanstonorganicmarket.co.za	Quality hand crafted goods, unique art and fresh organic and naturally grown produce
Friday					
1st Friday	The Shed Night Market	18:00 to 22:00	109 Malcolm Road, Randvaal	Felicity 073 232-0017 or 081 011-9456	Food & craft market.
Saturday					
Every Saturday	Tuinhekkie Farmers Market	08:00 - 14:00	cor Lazar Ave & Merwe Road Boothia Plots, Randfontein	Amanda Hefer 073 565-8905	Handmade products, numerous food stalls, flowers live entertainment most Saturdays, farmyard for the kids
Every Saturday	Verster Park Tuin Mark	09:00 - 15:00	Plot 21, Lang St, Verster Park Bronkhorstspuit	Maggie van Rheede 061 887-4149	Hand crafted goods, art, naturally-grown produce Community market to promote local business
Every Saturday	Wholefood Country Market	09:00 - 14:00	Sawasdee Exotic Nursery, cor Main & Zinnia Roads, Kyalami	Robyn 083 311-4768 wholefoodmarket@gmail.com	Variety of organic & homemade foods
Every Saturday	The Shed Food & Craft Market	08:00 to 15:00	109 Malcolm Road, Randvaal	Felicity 073 232-0017 or 081 011-9456	Food & craft market.
Every Saturday	Pretoria Boeremark	05:30 to 09:30	Pioneer Open Air Museum, Silverton.	012 804-8031 or 082 416-3900 blinsga@lantic.net	Fresh produce and traditional bazaar treats like jaffles, kaalings with pap and boerewors rolls.
Every Saturday	Bryanston Organic & Natural Market	09:00 to 15:00	Culross Road (off Main Road), Bryanston	Konrad or Glenda on 011 706-3671 glenda@bryanstonorganicmarket.co.za	Quality hand crafted goods, unique art and fresh organic and naturally grown produce
Every Saturday	The Hazel Food Market	08:00 to 14:00	Greenlyn Village Centre, cor Thomas Edison & Mackenzie Sts, Menlo Park, Pta	Rietha 083 554-5636. www.hazelfoodmarket.co.za	Fresh produce straight from the producer. Coffee, eats on sale
Every Saturday	Walkerville Farmers Market	09:00 to 15:00	R112 Main Road, Walkerville	079 076-7680 info@wfmarket.co.za	Fresh produce, arts & crafts, food court and kids play area
Every Saturday	Walkerville Country Market	09:00 to 15:00	Walkerville Showgrounds on the R82	Noorunisha 074 141-8485 market@walkervillesa.co.za	Fresh produce, crafter's market, food court, craft ber.. Kid's play area and pet friendly
Every Saturday	Bosheuvel Fresh Produce	09:00 to 15:00	54 Glory Road, Muldersdrift	Milch 082 553-2846	Meats and vegetables, delicacies, honey, cheese, brewery, crafter's market and children's entertainment.
Every Saturday	Market @84	09:00 to 14:00	84 On Main, Walkerville	Ariel 078 223-9238	Fresh organically grown produce and crafters market
Every Saturday	The Fresh Produce Co-op Weekly Farmers Market	07:00 to 11:00	49 Olifantsfontein rd, Glen Austin	Stall inquiries: fpcstalls@gmail.com Co-op: info.freshhproducecoop@gmail.com	Fresh produce, pickles, preserves and home industry and craft, food etc.
1st Saturday	Jozi Real Food VEGAN Market	09:00 to 15:00	Pirates Sports Club, Braeside Avenue, Greenside	083 532 2992 whitespace@mweb.co.za	Arts & crafts, live music, vegan cuisine, organic vegetables & coffee
1st Saturday	The Green Market	09:00 to 12:00	Pretoria Botanical Gardens 2 Cussonia Avenue, Brummeria, Pretoria	Melissa 083 562-5249	Products ranging from solar equipment to organic food
1st Saturday	Victus Christi Arts & Crafts Market	08:00 to 14:00	24b Miles Sharp Street, Rynfield, Benoni (north side of Bunny Park)	Schalk 082 561-9409 info@victuschristi.org.za	Arts & crafts, fine art, food, fresh meat & produce and home industry
2nd Saturday	Brakpan Boeremark	09:00 to 14:00	cnr van der Walt and Dirk van der Hoff Brakpan	Marius 011 744-2322 082 904-8852	Over 50 stalls. Food, arts, crafts, etc.
Last Saturday	Fresh2U Farmers Market	08:00 to 14:00	Corner Main Street and High Street Modderfontein (behind 33 High Street)	Jane 083 376 5567 Chantelle 082 338 7818 wardek@iafrica.com	Over 50 stalls. Fresh produce, home made goods, plants, food and more.
Last Saturday	Fresh Produce Market	08:00 to 13:00	Lakeside Mall Boathouse	Alma 079 940-0201 realfood4realpeople@gmail.com	Local fresh produce direct to the public
Last Saturday	Windpomp Market	08:00 to 14:00	Broodblik & Koffiepit on the R51 between Petit & Bapsfontein	adelekoffiepit@gmail.com 083 445-1608	Homemade crafts & food stalls bakery & coffee shop and entertainment
Sunday					
Every Sunday	Fourways Farmers Market	10:00 to 15:00	Corner Montecasino Boulevard and William Nicol Drive, Fourways	011 465 0827 www.fmarket.co.za	Get your groceries...In the garden!
Last Sunday	Aloe Valley Food, Arts & Craft Market	10:00 to 14:00	48, R511 Doornrandjies	012 669-3043 info@serendipitycafe.co.za www.serendipitycafe.co.za	Community market to promote local business

The book that every smallholder needs

Only R180 VAT and p&p included

011 979-5088
gautengsmallholder@gmail.com

Infrastructure (fencing, septic tanks, irrigation etc)
Livestock, Crop Production, Pasture Management
Farm & Garden Machinery, Legislation, Home
Preserving... and much more!



SuperSmalls

ONLY R120 PER ADVERTISEMENT (25 WORDS)

Conditions:

1. Small advertisements that do not qualify for FREE CLASSIFIEDS: PRODUCE, FODDER, PLANTS, LIVESTOCK & WANTED ADS.
2. Cost: R120-00 per 25 words or part thereof. Additional words chargeable at R1-00 per word. NO DISCOUNT FOR MULTIPLE PLACEMENTS.
3. Payments to be made to BOWFORD PUBLICATIONS (PTY) LTD, Nedbank Northmead, Account 1948 073 099.
4. Use your telephone number as reference on your payment.
5. Advertisements will only be published on our website and in the magazine when paid for.
6. The Publisher reserves the right to edit or omit advertisements at his discretion.
7. It is the Advertiser's responsibility to ensure we have received the advert and payment.
8. Services do not qualify for SuperSmalls. Please see our business rates on page 1.

USE THE SuperSmalls FOR:
PRODUCE, FODDER, PLANTS,
ALL ANIMALS & PETS including HORSES,
POULTRY, AND WANTED ADS.

USE THE COUPON BELOW FOR SuperSmalls

Tel:

DEADLINE for submission: 15th of the month prior
FOR ENQUIRIES TEL 011 979-5088

Send your advertisements and PROOF OF PAYMENT to:
BY FAX: 086 602-3882
BY POST: Box 14648, Bredell 1623
BY EMAIL: gautengsmallholder@gmail.com
BY HAND: 370 da Costa Dr, Bredell, Kempton Park

1 WORD (BLOCK CAPITALS) PER SPACE, PLEASE

FREE CLASSIFIED ADVERTISEMENTS

Conditions:

1. Only private advertisements for used or second-hand items accepted. COMMERCIAL and BUSINESS advertisers should refer to our rates on page 1, and those selling PRODUCE, FODDER, PLANTS or LIVESTOCK OF ANY DESCRIPTION should refer to the **SuperSmalls** coupon above.
2. Only ONE insertion per application, and one category per coupon.
3. No DEALERS or AGENTS or COMPANIES permitted in the free classified section..
4. No ANIMALS (including HORSES), PETS or POULTRY permitted as free classifieds
5. No WANTED ads will be accepted as free classifieds.
6. No SERVICES will be accepted as free classifieds.
7. Classified advertisements may only be submitted for three consecutive editions.
8. The Publisher reserves the right to edit or omit advertisements at his discretion.
9. It is the Advertiser's responsibility to ensure we have received the advert.

USE THE COUPON BELOW FOR FREE CLASSIFIED ADS

Tel:

DEADLINE for submission: 15th of the month prior
FOR ENQUIRIES TEL 011 979-5088

Send your Classified advertisements to us:
BY FAX: 086 602-3882
BY POST: Box 14648, Bredell 1623
BY EMAIL: gautengsmallholder@gmail.com
BY HAND: 370 da Costa Dr, Bredell, Kempton Park

1 WORD (BLOCK CAPITALS) PER SPACE, PLEASE

Take a restorative break

Holidays may be the preserve of the well-to-do but in this country where all is not always as it seems and madness and chicanery are features of our daily lives, it is very easy to become angry and depressed.

And let's be honest, if you're in business, either for yourself or for a boss, trying to make headway in the current recession can be pretty depressing in itself.

To maintain, if not restore, one's sanity, and to start to see the world through refocussed eyes, one must take a break from this madness.

And there's nothing like a bit of enforced idleness on a beach, in the Karroo or high in the mountains to bring about the required calmness of mind to carry on.

Calmness, it must be said, that junkies probably receive from a good joint. But let me hasten to add that I am in no way encouraging the ingestion of prohibited substances. I am merely making an observation.

And on this matter I think I speak from experience ... not about the joint, you understand, but about the need for holidays.

For many years our family was too poor and too busy building up a business to take proper holidays and certainly those that we did do, to the South Coast, for example are vividly remembered by our now adult children as having been memorably exceptional.

We certainly weren't a family, like so many of those Transvaal families of the 50s and 60s were, that spent every June holiday at Southport or Margate or 'Toti in the same accommodation, and doing the same thing, year after year.

In more recent years, however, my wife-of-long-standing and I have been taking a regular annual break and I have come to realise how essential these have been.

You see, for my entire life I have been an avid consumer of the daily news. There was a stage, before newsfeeds on one's cellphone and computer came into being, that I would read at least two, if not three or four, newspapers a day, in addition to listening to news bulletins on the radio and watching the evening news on TV. You could say I am a news junkie, and, certainly, I am an asset to any team in the general knowledge section of a pub quiz night.

But nowadays? I become increasingly depressed at the contents of newsfeeds and bulletins. Crime. Corruption. Incompetence. Theft and grand larceny. The Guptas. Jacob Zuma. Nkandla. Recession. Gigaba. Prasa. Eskom. The nuclear deal. White

Monopoly Capital. Not to mention Brexit and Donald Trump, global warming and Islamic militants. Was it ever ... EVER ... as bad as this in the old days? I don't think so.

This endless diet of grunge, served up with a liberal side-helping of bullshit-speak by the politicians and their spokesmen, inevitably leads one to anger. And anger inevitably leads one to view the situation as "us versus them" (and I don't need to spell out who the "us" is and who the "them" is).

And this in turn leads to a sense of hopelessness and despair.

Maybe it's time to pack up and go... And I have to admit that for the first time ~ ever ~ dinnertime conversation in our family has turned to questions such as "If I were to leave, where would I go?" and "What qualifications does one need in Thailand/Korea/Canada/Australia/New Zealand to teach/practice/work/whatever?"

"Stop the world, I want to get off." Well, no. That's not necessary if you climb into your car and take a drive through our incredible country. Drive slowly down the Stormberg Pass (my favourite). Or cruise endlessly through the Great Karroo. Or wind your way through the Valley of a Thousand Hills. And stop in small villages, and stay in quaint B & Bs. And smile at the locals, who will smile back and greet you as only South Africans do.

And slowly, minute by minute, hour by hour and day by day you will feel your equilibrium and sense of reality return, as will your love of the country and its people.

And maybe, if you're lucky, you'll return from your equilibrium-restoring sojourn to find the Saxonwold Shebeen has closed, Jacob Zuma in jail and the Guptas have gapped it to Dubai. Ah, well... we can but dream...

But drive slowly on your holiday, to avoid the potholes that lurk on every unmaintained backroad you care to travel along.

And don't drink the water if you can help it. Firstly because there isn't much and secondly because it's hopelessly polluted, thanks to municipal incompetence and bureaucratic larceny.



Discount Used Tractor Parts & Implements

Supplying Farmers with excellent quality new and used parts straight from the factory to the farmer since the 1980's. The BEST place to find the right equipment for the job at GREAT prices.



For enquiries Tel : 013 665 1052 / 013 665 1004

Or visit our site www.dutp.co.za
at Discount, Delmas, Mpumalanga

OEM Numbers only for reference use. All Prices are Excluding VAT.



COMING SOON



OEM Number	Description	Price
ZZ90116	PERKINS 3.152 KEYED NOSE ROPE SEAL	R 1,500.00
ZZ90078	PERKINS 3.152 KEYED NOSE LIP SEAL	R 1,500.00
ZZ90121	PERKINS 4.203/D4.203/A4.192 KEYED NOSE ROPE SEAL	R 1,750.00
31315911	PERKINS 4.248/4.236 SPLINED NOSE ROPE SEAL	R 2,000.00
ZZ90093	PERKINS 4.236/4.248 SPLINED NOSE ROPE SEAL	R 3,000.00
ZZ90081	PERKINS 4.236/4.248 SPLINED NOSE LIP SEAL FLANGE 12 HOLES	R 3,000.00
ZZ90212	PERKINS 4.248/4.236 SPLINED NOSE LIP SEAL	R 2,000.00
ZZ90119/ZZ90202	PERKINS 1004 PHASER SERIES SPLINED NOSE LIP SEAL	R 2,000.00
AT-18030	JOHN DEERE 4.202/ 4.219/ 4.239 NOSE 36MM	R 3,000.00
AT-22562	JOHN DEERE 6.303/ 6.329/ 6.359/ 6059 ENGINES	R 4,500.00
RE-54883	JOHN DEERE 4279 WITH GEAR LONG NOSE	R 3,500.00
RE504638	JOHN DEERE 4045 POWER TECH WITH GEAR	R 3,500.00
RE506195	JOHN DEERE 4045 POWER TECH WITH GEAR	R 3,500.00
ESNN6303DA	FORD 6010 SERIES 78 TEETH STROKE 4.2	R 2,750.00
C5NE-6303-K	FORD 5000 SERIES 78 TEETH STROKE 4.4	R 2,750.00

Revet Authorised Retailer of

JOHN DEERE

CLOTHING, TOYS AND NOVELTIES



Huge Variety, Great Service!



NEW CLOTHING RANGE JUST ARRIVED!

We courier nationwide



Revet 48 Pomona Road Kempton Park
Tel 011 965 1292 | Cell 083 680 7746 | sanet@revet.co.za

Trading Hours:
Monday - Friday 07h00 - 17h00
Saturday 08h30 - 13h00