

GAUTENG SMALLHOLDER

MARCH 2017
HOW TO MAKE YOUR PLOT PROFITABLE

 Find us on
Facebook
facebook.com/gautengsmallholder

**Free magazine:
Take one!**

**Now also available
~ as published ~
ONLINE... go to
www.sasmallholder.co.za**

IN THIS EDITION:
Land Ownership & Occupation
Factors that Weaken your Beehives
Fall Armyworm: What to do
... and much more...

More than 20 000 copies* distributed monthly throughout Gauteng

*including online readers at www.sasmallholder.co.za

- ALL PRICES INCLUDE VAT -

POWER
in your hands!



Diesel Engines



4HP
6HP
11HP includes electric starter
20HP

from R4 399.00
*VAT included

Petrol Engines



5,5HP
6,5HP
9HP
13HP
16HP
20HP
Horizontal Shaft

from R1 695.00
*VAT included

Outboard Engines



T6 6.5HP **R9 500.00**
and T15-15hp **R13 900.00**
*VAT included
cash / eft only

LAWNMOWER ENGINES



On Special!
20HP

ONLY R9 995.00
*VAT included

6.5HP to 14HP also available
from R2 250.00 VAT included

Cultivators Generators



Diesel

COMING SOON
brushcutters and
chainsaws



Battery Included

Petrol from R7 995.00
Diesel from R12 950.00
*VAT included

52cc/ 200mm Auger

Drill Bit
Included



R2 950.00
*VAT included

Water Pumps



Inlet/outlet hose available

Standard Pumps:
Diesel

from R4 999.00
*VAT included

Trash Pumps:

R4 250.00
*VAT included

High Pressure Pump:

R3 765.00
*VAT included

Pedestal-mounted Pulley Pumps

SU 50/2"
SU 80/3"



from R1 295.00
*VAT included

Power Sprayer



R4 350.00
*VAT included

Mini Dumper



R17 995.00
*VAT included **Loading Capacity 320kg**
Forward & Reverse Gears

2" DIESEL WATER PUMPS
ONLY R4 999.00
*VAT included

Tamping Rammer Replacement Engines
R2 995.00
*VAT included

Concrete Drive Unit

R3 195.00
*VAT included

Compactor

R8 595.00
*VAT included



BENONI: 011 422 6354

95 Amphill Avenue

FULL SPARES BACKUP & SUPPORT

*Pictures for illustrative purposes only.
Actual products may differ. E&OE*

ALL PRICES ARE VAT INCLUSIVE

www.magnumpower.co.za

- ALL PRICES INCLUDE VAT -

PUBLISHED BY

Bowford Publications (Pty) Ltd
Established 1985

(Reg No 2004/019727/07)

PO Box 14648, Bredell 1623

Tel: 011 979-5088

or 076 176-7392

Fax: 086 602-3882

website:

www.sasmallholder.co.za



facebook.com/gautengsmallholder

PUBLISHER & EDITOR

Pete Bower

email: editor@gautengsmallholder.com

RESEARCH EDITOR

Vanessa Bower

email: vanessa.bower@gmail.com

GRAPHIC DESIGNER

Mark Hageman

email: graphics@gautengsmallholder.com

ADVERTISEMENT SALES

Pete Bower

email: sales@gautengsmallholder.com

ADVERTISING RATES

(All Rates Full Colour, incl VAT)

Full Page - R7480

Half Page - R4620

Quarter P - R2570

1/8 page - R1360

Smaller sizes: R104 per col cm

(Minimum size - 4 col cm)

(Black only: colour rate less 20%)

Booking discounts

(Payment lumpsum in advance)

3 insertions - less 10%

6 insertions - less 15%

(other payment and discount options are available)

Circulation Area

More than 19 000 copies* distributed free through outlets in the Agricultural Smallholding settlements of Gauteng and adjoining provinces.

* excluding on-line readers.

By Mail

To receive the *Smallholder* by mail send us a supply of stamped, self-addressed A4 envelopes.

Or, subscribe for only R210 per year. See coupon in this edition.

Online

<http://www.sasmallholder.co.za>

Copyright

Title and contents protected by copyright. No part of this publication may be reproduced or stored in any form whatsoever without the prior written permission of the publisher.

Disclaimer

While every care is taken to ensure the accuracy of the information in this journal, neither the Editor nor the Publisher can be held responsible for damages or consequences of any errors or omissions. The Publisher does not stand warranty for the performance of any article or service mentioned in this journal, whether in an advertisement or elsewhere.

FRONT COVER

A lone windmill pokes towards a lowering sky, while its feet are planted in a field of cosmos. Typical Gauteng autumn scene.

COMMENT, by Pete Bower — Farm - and plot - murders



A few weeks ago an elderly neighbour of mine was found dead ~ murdered ~ on his porch one evening. Being elderly, he was in the habit of taking his rest in the sun upon his porch, sitting, and often sleeping, in a comfortable chair he had there.

The lady members of his family had gone out for the day, leaving him at peace and ostensibly alone. When they returned in the evening they saw him in his chair and entered the house, believing him to be asleep. However, when they attempted to rouse him to come in for dinner they found him non-responsive.

And, on looking around the house they found a safe had been forced, and valuables stolen.

In his 80s, my neighbour thus joins the more than 1 500 victims of unnatural death that occur in South Africa monthly.

Conflating his murder on a 2ha East Rand smallholding with the number of violent killings that take place on South Africa's farms, remote as they are, is probably stretching a point. Is the modus operandi of the criminals the same on farms and smallholdings? Are the causes and motives similar? And do the authorities react in the same way? But it is certainly worth making the point that the death of a defenceless old man, resting harmlessly on his porch, for the theft of a few trinkets and a bit of cash, is barbaric and dreadful.

And he is by no means the first to die violently at the hands of criminals in our area, nor is he the first person of my acquaintance to be murdered on a plot. A couple of years ago a good lady friend of mine was murdered in her home in the country north of Krugersdorp by thugs who violently assaulted her and her husband, before making off with some portable loot. She died slowly, her life-blood literally seeping from her, tied crudely to her husband, as he made desperate attempts to free himself to save her.

We all know that Muldersdrift and surrounds have suffered inordinately at the hands of criminals in recent years, and the murder rate there is significantly higher than in most other areas of rural Gauteng yet it makes it no easier on the bereaved, and friends of the victims, and no amount of security, it seems, will prevent a determined criminal from perpetrating his evil actions.

Notice also how, when talking about such incidents we South Africans very rarely bring up the subject of the capture, trial and conviction of the perpetrators. For, it seems, if the perpetrators are ever caught, there is a very good chance that the Police who caught them will commit some blunder with the evidence which will render it inadmissible in court and the case will simply be chucked out. That, of course, is if the perpetrators are ever caught in the first place, which is not very likely given the ridiculous case loads of the average South African detective.

We commiserate with the families of the victims and offer sympathy and warm hugs, but we invite ridicule, it seems, if we suggest that a bit of retributive justice might be meted out.

Organised agriculture periodically ~ and quite rightly ~ raises its concerns about the number of farmers and their families who fall victim to violent crime, and holds periodic meetings with grandees in the security and policing services. I suppose smallholders should do something similar, though we lack the formal structures through which to speak with one voice. Perhaps now is the time for smallholders to band together as one group, so that we can speak with one voice, either to strengthen the case put by agricultural organisations, or on our own behalf,

But anyway, if you think crime is bad on the plots, and on the farms, try the townships, or the ganglands of the Cape Flats. Short of Colombia, northern Syria or Afghanistan they have to be the most violent places on earth.

So what's to be done, if we are to prevent ourselves from joining the horrendous murder statistics? The assurance of punishment, of course, is a good deterrent, if for no other reason that, for as long as the criminal is incarcerated he is unable to commit further crimes. But punishment and incarceration implies that he is caught and convicted, and that brings us back to the problem of an inadequately-sized, and inadequately-trained and inadequately-equipped police force (it is an indictment on our government that the amount South Africans currently spend on private security services exceeds the budget of the SA Police Service).

But the real solution lies in improving education, creating meaningful jobs, reducing inequality, and giving young people and the marginalised hope. Hope in their future, and a sense of purpose and reason to live. For without that, all our lives are at stake.

HOSE, FITTINGS & TUBING

WATEX - the brand that caters for your quality hose needs.
Ask for it at your nearest Hardware Store or Co-operative - buy South African.

Garden Hose

- **NEW SABS 12 Y QUALITY HOSE**
 - 12 & 20mm diameter Garden Hose
 - 20 & 30 metre lengths
 - Manufactured from virgin raw material: Black Inner with ribbed Crystal Green Outer
 - Minimum Burst Pressure: 2500kPa
 - Look for our distinctive packaging!
 - 6 Year & Colourful 8 Year Warranty
- Hose also available



Industrial Tubing

- **CLEAR TUBING • FUEL HOSE • AIR & WATER HOSE**
- Quality manufactured from virgin raw material
- Clear tubing is available in thin and thick wall
- Manufactured for low pressure applications
- Good flexibility
- High resistance to gases and chemicals
- High pressure applications: air & oil
- Specifications available on our website
- From 3mm - 32mm x 30m rolls.



Builder's Hose

- 20mm diameter
- Lengths of 30m or 50m
- 5 Year design life
- Burst Pressure - 4000kPa



Gas Hose

- Manufactured from virgin raw material
- Operating temperature -0° C to +50° C
- Complies with SANS 1156-2: 2010
- Pre-packed OR available in rolls



Reinforced Hosing (Pty) Ltd

Manufacturer & Supplier of WATEX:

- Agricultural Dragline • SABS Mining Hose
- Clear Tubing • Garden Hose
- Prepacked Garden Hose Fittings



QUALITY HOSE MANUFACTURER



• www.watex.co.za

• ☎ 011 769 2600

4928 WATEX Gauteng Smallholder 12pg mrrch'17



Knit[®]

Manufacturers of Knitted Agricultural
and Decorative Shade Netting

PROTECTING YOUR CROPS FROM THE STORM

PROTECTS YOUR CROP AGAINST SEVERE WEATHER CONDITIONS (I.E. WIND,
SUNBURN, HAIL DAMAGE, BIRDS AND LARGER INSECTS).

Multiknit (Pty) Ltd: +27 (0)11 692 1658 | clientliaison@knittex.co.za | www.multiknit.co.za

MADE IN SA

TT45 & FALCON SLASHER

www.nhsa.co.za
www.newholland.com



Huge savings with the New Holland tractor and slasher combo deal.

Buy a New Holland 35kW TT45 2wd tractor
with a Falcon F40/I20 slasher for only

R185,000.00*

excluding VAT
R210,900.00 including VAT

Normal tractor retail price - R190,000
Normal slasher retail price - R25,000

*Terms and conditions apply. Cash offer. While stock lasts.



YOUR SUCCESS - OUR SPECIALITY

Runyuan **SPECIAL FOCUS ON** 润源实业 **AGENTS & SALESMEN SOUGHT**



30HP - RY304

Power & performance for small farmers

**Canopy & ROPS
4 wheel drive**



70HP - RY704

User-friendly controls,
Ergonomic design and
easy to operate

**Enclosed cabin
4 wheel drive**



80HP - RY804

Excellent power to performance
ratio, Ergonomic design

**Canopy & ROPS
4 wheel drive**

Runyuan
润源实业



Biogas Generator

R8 000

**All Biogas Accessories
and
Fittings**



Green House



only R260/m²

JIURUI SOUTH AFRICAN NEW ENERGY SCIENCE AND TECHNOLOGY (PTY) LTD

Unit 8, Aviation Park, 18 Pomona Road, Kempton Park.

Tel 062 520 0340 or 081 252 0028 (Farming Implements)

email runyuan1@runyuan.com.cn, runyuan04@runyuan.com.cn,

runyuan08@runyuan.com.cn

ONE-STOP SERVICE PLATFORM FOR FARM EQUIPMENT

Cultivators ~ Tractors ~ Trailers ~ Planters ~ Harvesters ~ Hand-held Tools ~ Pumps

SMALL FARMERS

THROUGHOUT SOUTHERN AFRICA!!



RY1100B 6,7kW
(9HP) Diesel driven
tiller

From R8 500
to R18 000

Power Tillers

Four models to choose from:

RY900 (pictured) - 5,2kW (7HP) petrol engine, belt drive
860mm tilling width, max 300mm depth

RY1100S (pictured) - 5,2kW (7HP) petrol gear drive
1m tilling width, max 300mm depth

RY1100C - 6,7kW (9HP) petrol gear drive
1m tilling width, max 300mm depth

RY1100B (pictured) - 6,7kW (9HP) diesel gear drive
1m tilling width, max 300mm depth

Optional attachments include
adjustable 1-share plough, etc



RY900 5,2kW
(7HP) belt driven
tiller



RY1100S 5,2kW
(7HP) Petrol driven
Tiller

All models come standard with:
Wheels & Tiller Blade Sets

Walk-behind Tractor COMBO



12HP Walk-Behind
Tractor



1,5 ton capacity
ride-on trailer



Adjustable
single-share
plough



Ride-on
Rotavator

R50 000

Sickle Bar Cutter
9GB-1.6 m

R14 000

7CX-5 ton trailer

R48 000

2 row maize planter
2BJG

R16 000

Slasher Mower- 9GX-1.5m

R15 000

Ridger 3Z-120 1 row

R6 500

Ridger
3Z-120 - 2 rows

R10 000

4 row maize planter 4BIG

R32 000

Disc harrow 7x7

R15 000

Disc harrow 8x8

R17 000

3-share disc plough
Heavy Duty 1LYQ

R25 000

Fertiliser spreader
CDR-600 litre

R8 000

ALL PRICES EXCLUDE VAT.

A TRUSTED name internationally for quality agricultural machines

Our Agents:

Benoni 082 900 5400 Ronnie

Bronkhorstspuit 072 730 7635 Martin

Pretoria North 081 727 1675 Dusty

ALSO:

Limpopo 076 013 2232 Thys

Zeerust 082 783 2599 Ambro



www.runyuantrade.com.cn

Run-Yuan



POOLWARE

PLUMBING

IRRIGATION & PUMPS

www.saplastikor.co.za

CENTURION: 57 Jurg Avenue

TEL: 012 653 1289 FAX: 086 508 1029

PRETORIA NORTH: 256 Koos de la Rey Street

TEL: 012 546 5900 FAX: 086 625 9454



eco TANKS

ECO Vertical Water Tanks

2 200L - R2 189-00

5 000L - R4 378-00

Big Blue 3 Stage System
Whole house filter.

Includes:

PP filter, Carbon block
and Resin filter

R3 690-00



Gemini

Gemini Twinsweep

Pool Cleaners

Pipes & Valve included

2 year warranty

R609-00



Quality
POOL & SPA PRODUCTS

Quality Pool Pumps

2 year warranty

0.75kW - R1 869-00



Reverse Osmosis Filters
Buy 3 filters Sediment +
carbon block + GAC

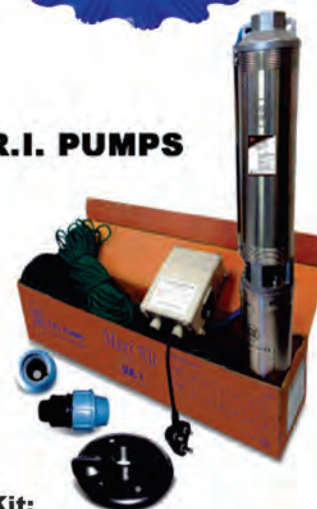
R99-00

5 Stage Reverse Osmosis
Drink water filter system

R1 899-00



C.R.I. PUMPS



4" Borehole Kit:

Included: Oil filled Motor, Pump,
Control Box, Cable, Rope, Baseplate &
Fittings.

MK1-0.37kW +60m cable R3 999-00

MK2-0.37kW +50m cable R3 699-00

MK3-0.55kW +60m cable R4 199-00

MK4-0.75kW +70m cable R4 799-00

MK5-1.10kW +70m cable R5 299-00

IMPORTERS OF *RAIN BIRD* **PRODUCTS**

Prices include VAT * While stocks last * Prices subject to change without prior notice * Illustrations may differ from products * Ts & Cs apply

Comment: 'You've overplayed your hand'

Sir ~ In all the time that I've read your magazine ~ especially your personal editorials ~ I've appreciated your insight into Agronomism (sic), but what a pity that you've overplayed your hand in the latest edition (Comment ~ The elephant in the room) and thereby probably ~ unwittingly ~

pinned your (political) flag to the mast!

Why you didn't stick to your trade makes it all the more deflating, but surprisingly the skeletons in the cupboard have eventually now come tumbling out ...

Consequently, you'll no longer have my support and, hopefully, I'll be able to

influence a few advertisers in this respect too.

Your roots in all probability extend to the defunct PFP and now DA ~ sickly, old white men who with their links to the Queen's horrific past in South Africa ~ and don't forget the other so-called British Colonies, where your fore-seeds (sic) commit-

ted commercial terrorism with applause from your political cronies.

What has Apartheid (after 23 years of ANC government ~ almost halfway to the 48 years of Nationalist government) got to do with the present time?

Who are you to express an opinion on the past ~ where were you, then? What have you done to improve the lot of the five million plus children in South Africa below

Continued on page 8

Comment prompted interesting lunch talk

Sir ~ I want to make comment on your editorial The elephant in the room (Gauteng Smallholder February 2017 issue).

It dealt with things which, I imagine, either rest uncomfortably with the 'mink and manure' set who, like me, collected their free copy at the tack shop in Crowthorne or are (issues that are) far from

their minds.

It certainly had that effect at my family's Sunday lunch

gathering, and issues of development, land reform, apartheid history and difficult

Continued on page 8

The Editor welcomes your letters, comments and opinions, but reserves the right to edit and shorten as necessary. Senders' names and addresses must be included.

Afrikaans letters will be translated.

Post mail to: Letters, PO Box 14648, Bredell 1623 or fax 086 602-3882

or e-mail editor@gautengsmallholder.com



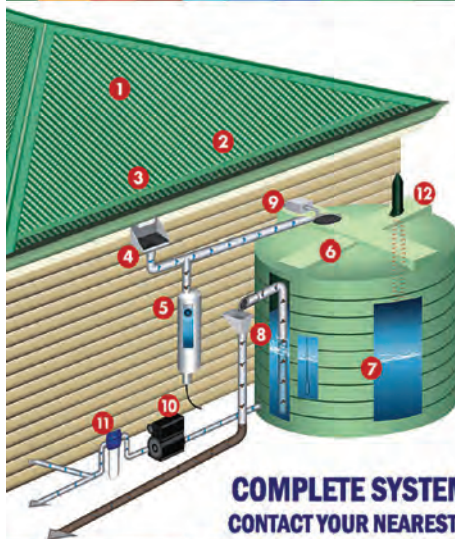
BREDELL GAS & HARDWARE

Hardware **HOT**
Dry Cleaning **Summer Gas**
TV & Video Repairs

OPEN ON SUNDAYS 09:00-12:00

Bredell Shopping Centre
3rd Ave, Bredell Tel 011 396-1662

FarmCity
farm-value in the city



Rain Harvesting

- 1 Collection Surface
- 2 Collection Gutters
- 3 Gutter Protection
- 4 Rain Head Inlet Filter
- 5 First-flush Diverter
- 6 Inlet Screen
- 7 Collection Cistern
- 8 Overflow Port
- 9 Auto-fill / Automatic Top-up
- 10 Pump
- 11 Water Filter
- 12 Water Level Indicator

COMPLETE SYSTEM AVAILABLE AT FARMCITY
CONTACT YOUR NEAREST BRANCH FOR MORE INFORMATION



Atterbury c/o Atterbury and Olympus Road Tel: 012 991 7090 |
Pierre van Ryneveld c/o Ryneveld and Pieter Botha Street Tel: 012 662 1710/25 |
Ruimsig c/o Hendrik Potgieter and Viljoen Street Tel: 011 662 1471

Hinterland

ANIMAL HEALTH | PETCARE | OUTDOOR | DIY | PAINT | EQUESTRIAN | POOL
CLEANING | GARDENING | JOHN DEERE | CLOTHING | IRRIGATION

Bumper crop from only five seeds

Sir ~ I thought I would send you a picture of our very successful crop of pumpkins this season.



We planted five seeds on a bank along a side wall ~ and got 45 pumpkins from them! The weights were between 13 and 18kg.

This week we will lift ones growing along our front fence, and I suspect there are another 25 odd!!

We have donated the money (raised from their sale) to the Animal Rescue Association,

On their way to market ... reader Jill Bell's bumper pumpkin harvest.

which our daughter is passionate about.

Considering the bad start to the season we have had a very successful crop of gem squash, cucumbers, onions, beetroot, cabbage, potatoes, tomatoes, spinach, beans, green peppers etc ~ not bad for a small vegetable garden. There is nothing more satisfying than picking veggies out of the garden and straight into the pot!

I so enjoy your articles and must say I could not agree more on your subject of accommodation and schooling (Comment: The elephant in the room, February 2017). We took so much for granted and I'm afraid never really considered how far people had to walk every day. How selfish we were!

Jill Bell

East Rand

COMMENT

From page 7

the age of six years, in order to allow your past sniggles (sic) to become hard facts of genuine upliftment and not only Helen Suzman et al comments, painted broadly in print?

Please do take time to read the research done by Prof Servaas van den Bergh in conjunction with Dr Nicolaas Spaul (Social Policy Research Unit, University of Stellenbosch), regarding the state of education in SA (with the financial support

Continued on page 9

LUNCH

From page 7

solutions raged across the table and made for a very interesting meal.

Thank you for the stimulation ~ not the sort of insights one expects in a free agriculturally-focused magazine.

I am sure the editorial has had both its fans and its detractors and I was reminded again of the adage that a good editorial, like a good sermon, should "afflict the comfortable and comfort the afflicted"! Your editorial certainly did that and I have asked local family members to keep me a copy of your future issues.

Jo Stielau

Claremont, Cape Town

DICLA
Training and Farming

Poultry

- Poultry units, layers, broilers and broiler breeders
- Equipment
- day old broiler chicks, point of lay breeders and layers
- Feed, vaccines and medication
- Installation of units

Hydroponics

- Tunnels & Irrigation
- Seeds & Seedlings
- Fertilizers, Pesticides, herbicides & Fungicides
- Installation
- Net houses & Irrigation

Open-field Irrigation

- installation of tanks and reservoirs
- tanks & stands
- Reservoirs

Tractor and Parts

- Massey Ferguson, New Holland, Farm Trac
- All farming implements
- spares for all farming implements

SALES

Office: 071 692 2229
Fax: 086 650 1282
Email: training@dicla.com
Postal: P.O. Box 2183, Rant en Dal, 1751
Physical: Plot 26, Zwartkrans, R563, Krugersdorp

AgriSETA

Accredited Education and training provider
Accreditation No: AGRI/c prov/0249/09
ETQA ID: 694

Mentoring

- Mentoring to farmers in all areas of farming

Agriculture

- Tractor Operator 4 days
- Broiler Production 4 days
- Layer Production 4 days
- Hydroponic Farming 4 days
- Animal Production 4 days
- General Farm management 4 days

Electrical Artisan

- Phase 1-3 coming soon

Welding Artisan

- Phase 1-3 coming soon

Equestrian

- Grooming
- Lunging
- Horse behaviour
- Stable yard operations
- Hoof care

Group Bookings
Please contact our office for specials

Training Bookings:
info@diclatraining.com

Training Courses Offered

www.diclatraining.com

Report armyworm outbreaks to dept, please

If you discover an outbreak of Fall Armyworm (*Spodoptera frugiperda*) in your mielies ~ or other crops ~ the Gauteng Dept of Agriculture & Rural Development (Gdard) appeals to you to report the details to your nearest regional departmental office.

The invasive pest has been identified in Bronkhorstspuit, Pretoria, as well as in east and

west Gauteng. Smallholders are urged to be vigilant to ensure early detection and enable timeous assistance. Apparently an

Mailbag: Importance of eradicating aliens

Sir ~ I wish to congratulate you on your constant reference to the importance of eradicating alien vegetation.

I read recently that Dr Guy

MAILBAG: COMMENT

the evidence seems to suggest otherwise ... In tests conducted in 15 Sub-Sahara African countries by SACMEQ, SA ranks 10 out of 15 for Grade 6 reading and arithmetic.'

Please kindly (sic) read on once you've googled the reference "SA Education - the poorest choice"!

Maybe, just maybe, you will

infestation can be contained with timely intervention.

The migratory worms are native to the United States, South and Central America

and are new to South Africa, having moved south from other maize-growing counties such as Zambia and

Continued on page 10

Preston, who among other things is responsible for the Working on Fire programme, stated that the fires in Somerset West were made much worse because

come to other insights!

With tears in my eyes for all you sickly old men, who still live under the Queen's throne of privilege!

Michael Waldeck

By email

Good heavens! What vitriol! How badly can one misunderstand a piece of writing! Words fail me.

~ Editor

homeowners had not managed invasive alien plants on their properties. He reminded everyone that alien plants, such as pines, wattles and gums can burn with an intensity of ten times more than the indigenous plants they displace.

I remember years ago the *Smallholder* ran a series of articles about which trees you should plant in place of the alien that you have taken out. Very useful.

Thanks for the responsible writing that you do.

Margaret D

Muldersdrift

From page 8

of: 'The Programme to support Pro-Poor Policy Development, a partnership between The Presidency and the European Union.) I'll draw on a single excerpt from the research document under the subtitle "SA in International Context". 'It is tempting to blame poverty for our weak educational performance! But

FOR SALE Small farm, Nigel district Asking price: R2.1m



- 3km off Nigel-Balfour road
- 3 bedrooms
- 2 bathrooms
- Lounge
- Dining room
- Farmhouse kitchen
- 2 equipped boreholes
- Tractor and implements included
- Electric fencing
- Outbuildings & labourers' quarters.
- Alarm

36ha

Large family/TV room upstairs.
Large verandahs front and back.

Dick 082 600 7398 dick@mbtsa.co.za

HI PERFORMANCE FEEDS

016 366 1398 • 082 907 6519

Meyerton - Heidelberg road
Nigel 011 814 1572 • Vanderbijlpark 016 987 3571

We sell per kg ...
buy only what you need

Winter seeds now in stock

Oats, rye grass, stooling rye,
turnips & Japanese radish

March Specials

Registered shops & resellers qualify for special discounts on all products "t & c apply".

Whole maize - 40kg	R159
Crushed maize - 40kg	R192 ^{incl.}
Mixed fowl - 40kg	R212 ^{incl.}
Broiler grower pellets - 40kg	R254 ^{incl.}
Laying pellets - 40kg	R209 ^{incl.}
"Vet" pellets - 40kg	R175 ^{incl.}
Rabbit pellets - 40 kg	R201 ^{incl.}

AND MANY MORE...

Pharmaceuticals • Broiler Equipment • Fertilisers • Fencing

VITAL+MED Get all your animal vaccines here
Tel 016 362 3515 ~ Meyerton

Tough & Dependable Machines Ideal for a Smallholder

Hammermill

Petrol, diesel or electric
Belt drive, 3 sieves,
Mild steel blade is easily replaced. Mills ANYTHING!

Feed Mixer

Single phase electric motor
300 litre bin

Feed Mixing Trailer

1 000 litre capacity
Diesel-driven
PTO-driven model also available

Spares for ALL small hammermills
Used Tractors Also Available

Call Pieter
056 515 4380
piet7@africaimplements.co.za
Visit our website: africaimplements.co.za

NEWS

From page 9

Zimbabwe. They are believed to have arrived in Africa in drought and famine relief maize imported from the Americas.

A number of pesticides have been registered to combat them.

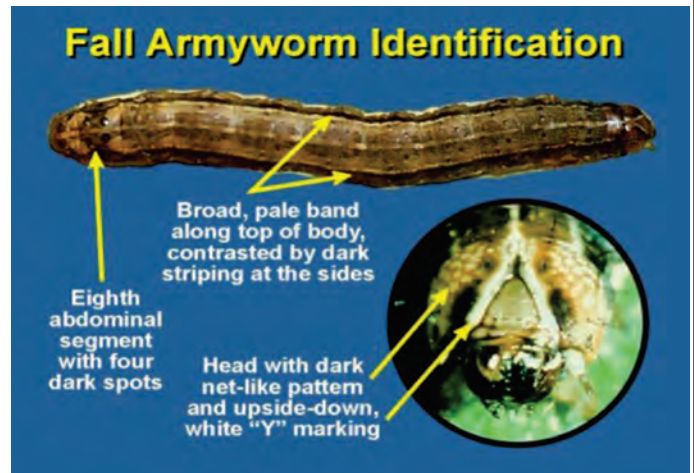
The Fall Armyworm gets its name from the way the worms march from grasslands to crops. They are also known as Amerikaanse Kommandowurm.

A pest action group has been established to monitor the

impact.

The pest flies on prevailing winds, has a short life-cycle, and attacks a wide range of crops, rendering it a serious risk to national food security. There have been records of damage on spinach, sugar-cane, rice, lucerne, sunflower, wheat, cabbages, pepper, soya, potatoes, pastures and grasses. However, it is particularly fond of maize and can devour almost the whole plant.

So what are you looking for? Eggs are laid in batches of 20-



250 on both sides of leaves. The insect goes through six

developmental stages from egg to moth stage, and is difficult to differentiate from some other worms. Even the moths are similar to other species.

What you will be able to identify is the damage that the pest is doing to your mielies. It attacks the leaves and damages the silk.

It then proceeds to eat into the ear of corn from the outside and inside. It feeds at

Continued on page 12



Fall Armyworm eggs on a mielie leaf



Worm damage to a mielie stem

GUSTO PUMPS CC

Water Specialists

THIS IS THE SIGN FOR WATER MANAGEMENT

**We supply and repair all
PIPES, FITTINGS AND TANKS,
SUBMERSIBLE PUMPS,
BOREHOLE PUMPS,
SWIMMING POOL PUMPS,
& PRESSURE SYSTEMS.
At the best prices!**

**We are experts in
water management.
Our prices are very
reasonable and
our service is the
BEST!**

Drilling

Tanks

Submersible Pumps

Pressure Systems

Borehole Pumps

**Tel 011 957 2588 Carina Krause
082 872 4143**

Quality Irrigation Pipe @ BEST PRICES!!

Buy direct from our Factory

- ★ LDPE 12-50mm dia, Class 3 & 6
- ★ HDPE 12-90mm dia, Class 6 to 20
- ★ We do custom jobs to client's requirements
- ★ Made from recycled material ... environmentally-friendly
- ★ Dealers sought throughout Gauteng

DeltaPlast (Pty) Ltd
LDPE and HDPE irrigation pipe manufacturers

Tel 016 455-3947
3 Joubert St Ext
Duncanville,
Vereeniging

Leaky pipe?? Or offsets??
We buy scrap polyethylene pipe
Best prices paid!!
Clean up your farm ...
Recycle the waste!!

Long-handled Hand Tools

Ideal for the elderly gardener!! No bending!!

4 designs to choose from
Sturdy 3mm stainless steel construction
Long 1,2m wooden handles

Trade enquiries welcome

NEW!!

Spares for ALL models of Honda machines always available! Consumables for trimmers, etc.

MULTI

FIRE & POWER

UPGRADE TO A HONDA

Honda Water Pumps, 2" & 3" models, & Honda Brushcutters

1 GRANT ST, NEW STATE AREAS, SPRINGS
TEL: 011 817-3044/84
082 444-8952
FAX: 011 817-3063
www.mfpafrica.com
e-mail: mulpower@netactive.co.za

All prices Vat inclusive E&OE - Generator power - No outages

GROENVOER

Quality Animal Feeds



Since 1970

CONVENIENT ONE-STOP COUNTRY SHOPPING

Feed • Vet Products • Saddlery • Gumpoles • Buckets • Bins • Brooms • Chicken feeders & drinkers
Fodder • Eragrostis • Lucerne • Oat hay • Teff • Country Markets • Groom Training • Farm stall delights



"Autumn is a second
spring when every
leaf is a flower."
Albert Camus

March 3: World Wildlife Day
March 22: World Day for Water



GROENVOER Premium Quality Animal Feed

- Always Available, Always Freshly Mixed
- Formulated for South African conditions
- Organic preservatives
- Direct from factory to feed room

Horse Feed is our Speciality

MARCH 2017 SPECIALS!



Coopermatic
Spray
R134
Save R30.50

**NB March and April
are high risk months for
African Horse Sickness**



Tabard Equine 5lt
R999
Save R150.00

Eqvalan Gold
Dewormer 7.74g
R72
Save R29.50
(Ivermectin/Praziquantel)
Roundworm, Tapeworm & Bots



Thelly's MSM
Supplement 1kg
R140
Save R50.00



Pro-Sacc
Pro-biotics 2kg
R55
Save R25.00



Fetch Dog Food 20kg
R273
Save R47.00



40kg
R507
Save R93.00



PROUDLY PRESENTING THE SA GRASS ROLL SAVER!

- Recoup cost within months
- Comfortably holds 1.2m grass roll
- Only needs two people for easy loading
- Long Lasting
- Money saving
- Galvanised

SA PATENT
NO. 2012/05600
SA REGISTERED DESIGN
NO. A2012/01178 & F2012/01177
Infringers will be Prosecuted



**NOW AVAILABLE FOR
FEEDING SHEEP & GOATS**

Stockists of:



JOCK



ORDER TODAY!

Speak to: Cathy, Irene,
Jenny & Philenie

011 314 1211 082 545 9277
011 314 1212 076 451 7771
011 314 1156 076 451 7799
email: groenvoer@mweb.co.za
web: www.groenvoer.co.za

Address: Olifantsfontein Rd (R562), Midrand, Gauteng, SA



BLANKET WASHING & SADDLERY REPAIRS

Quick, thorough
& Inexpensive

NEWS

W Rand agri-park opens hydroponic chamber

Gauteng's farmers can now look forward to new and innovative ways of aggregating and storing their produce with the launch of Westonaria's new Agri-park chamber.

Late last year the Gauteng provincial government launched the first Agri-park facility on the West Rand. At the same time Lebogang Maile, Gauteng MEC for

Economic, Agriculture, Environment and Rural Development introduced the first government-owned vertical hydroponic Agri-park chamber.

The park will be able to

accommodate local small-holder farmers who will now have access to a modern storage facility for their produce. The facility will also assist farmers to grade their produce for markets.

A total of four further Agri-parks have been established, in Sebokeng, Pretoria, Eikenhof and Carletonville. This facility's infrastructure is designed to grow various fruits and vegetables.

W Rand donkey skin stash uncovered

Following the discovery in January of a container-full of dried donkey skins on a plot in Putfontein on the East Rand, Gauteng police have uncovered another stash of hundreds of donkey skins on the West Rand.

The police said the donkey

skins discovered on a smallholding in the Brandvlei area near Randfontein were valued at around R2,25 million.

The police received a tip off about a smelly warehouse at portion 26 Brandvlei. Investigation revealed that the warehouse was leased to a

foreign national who was not found at the premises. It is alleged that the donkeys could have been illegally slaughtered, and the police are said to be investigating two cases under different stock theft laws.



BANG-A-LERT

Stop crime on your property
Affordable & Practical
6 000 units sold in South Africa
Simple Installation
No Power Required
Dealer Prices for more than 10 units
Mason Engineering
083 611 2857
www.bangalert.co.za

ARMYWORM

Contact details of the Gdard officials to whom to report infestations			
Region	Contact Person	Office Number	Mobile
Randfontein	Lesego Phakedi	011 411 4300	076 422 2501
Germiston	Seabata Maoba	011 240 3077	076 421 9597
Pretoria	Anton Maswikaneng	012 316 1687	076 422 1998
Head Office	Shandukani Netshifhefhe	011 240 2500	082 728 8896

From page 710

the base of the cob as well. Even the stem and the tassels receive its unwelcome attention.

Larvae tend to hide from sunlight or move into shade or under cover.

Cor 3rd & 9th Avenue Geduld, Springs
011 811 5067

LAWNMOWER & POOL
in association with

OUTDOOR & **GREEN INDUSTRY**
RACE DAY

Would like to invite you
to come & join us on
27 & 28 May 2017
at Malonjeni Guest Farm
for the best Ride On Lawnmower racing
& Chainsaw Speed Cutting /
Wood Carving Events.

Not only the
biggest but the best Outdoor Show
you will ever experience

OPPASA

Quantum Feeds
R515 Rayton/Bronkhorstspuit

Teff
A & B Grades
Round & Square Bales

Smutsvinger
Round Bales

Eragrostis
A & B Grades
Round & Square Bales

for High Quality Hay all year round,
contact **Tian Botha @ 082 784 8804**
quantumfeeds5@gmail.com

Annual **CUSTOMER CONTRACTS** can be secured
Delivery available in PTA East, Benoni & Kyalami

BEEKEEPING

Factors & practices that weaken your hives

Old-time beekeepers, now in their sixties and seventies, who practiced beekeeping in the late 70s and early 80s, sit around the table in amazement and despair and ask the question, "What has happened to our bees? Once we used to obtain an average of 30 kg of honey annually per hive, and now only receive 10 to 14 kg per hive. Those swarms were strong and very aggressive, but not our swarms of today." Throughout the country where beekeepers operate there are reports of the decline of bee populations. Gardeners report the lack of bees about their gardens when in previous years bees were always seen about the flowers, but not these days. Farmers lack bees just to pollinate their veg gardens and beekeepers have to replace 20% of their swarms annually to maintain their numbers to perform their annual pollination contracts. Fruit, nut and seed producing farmers in America, Japan and other countries are having to hand-pollinate their trees to obtain crops and will we in this country also one day be faced with these problems? However despite the decline we are experiencing, we still have bees, therefore let's take care of them. The first question we ask is, "How come we do not see those swarms of moths at night about the lights and those many butterflies during the day? Is there something in the polluted air that is killing these moths at night and our butterflies and bees during the day?" The second question, "Do all insecticide sprays contain an ingredient that penetrates the systemic structure of plants?" Moths and butterflies lay eggs on plants, worms hatch, the larva feed on the plants, bees

Another in our series of articles on apiculture by veteran beekeeper Peter Clark, chairman of the Eastern Highveld Beekeepers Association

gather the poisoned pollen which they feed to their young, both results being, no more bees, moths and butterflies.

Secondly while on the insecticide subject, is there an ingredient in the insecticide composition that the farmers

spray that causes the bees to become disorientated and are not able to return to their hives? This is called Colony Collapse Disorder, or CCD. Of course the insecticide manufacturers deny this possibility and say CCD is due

Continued on page 15

Snake Catcher

Protect Guests, Family, Friends, Animals, Livestock



Only R 1295.00 & FREE Postage
Call or SMS Ralph: +27 825730710
Or email: SnakeAlert@Global.co.za

TEL: 012 653 8342/8 or 083 269 0398

Email: dennismow@mweb.co.za

Unit 9 Miracle Park, Lenchen Ave

Ext off Old JHB Road CENTURION

GPS: 25°52.753'S, 28°9.635'E

EAST RAND 011 730 3400



VALID UNTIL END MARCH'17

SERVING THE PUBLIC FOR 21 YEARS

Stiletto

Garden services choice!

Backpack Mist duster
Spray against the Armyworm!



82.4 cc,
20 Liter
Chemical
Tank
R3,975
Excl. VAT

Tractor Mounted Post Hole Digger
PTO driven



(Drill Bit not incl.)
R15,500 Excl. VAT

Backpack Blower
51.7cc, 1.75 kW / 2.4 hp



R2,550 Excl. VAT

2-Stroke Petrol Engine

122 cc
2.7 kW,
3.6 hp



R1,950 Excl. VAT

Hedge Trimmers
22.5 cc
600 mm Cutting width
R1,895
Excl. VAT



2-Stroke MT110 Big Bore

128 cc
Vertical Engine,
5.8 hp



R2,950 Excl. VAT

Water Pumps
2" - 50 mm
163 cc Engine
R1,975 Excl. VAT



Pole Pruner
R3,600
Excl. VAT
27.2 cc,
Cut. Length:
255 mm
Overall Length:
3 - 4.3 m



Hand Held Blowers
25.4 cc -
R1,650 Excl. VAT
With Vacuum 25.4 cc
- R1,800
Excl. VAT



4-Stroke Petrol Engine

118 cc
3.2 kW,
4.3 hp



R1,500 Excl. VAT

Brush Cutters
26 cc
(Bent shaft)
R1,350



750 mm Grazer
344 cc Briggs Engine
Steel deck,
750 mm
cutting width
R21,000
Excl. VAT



Multi Tool
32.7 cc Power Unit with
1). Nylon Head,
2). Pole Pruner,
3). Hedge Trimmer
4). Lawn Edger
All 4 attachments incl.
R4,250 Excl. VAT



4-Stroke Petrol Engine

173 cc
Vertical,
4.5 kW, 6 hp



R2,050 Excl. VAT

Straight Shaft
32.7 cc - **R1,650**
42.7 cc - **R1,850**
51.7 cc - **R2,050**



3-Wheel Brush Cutters
42.7 cc
1.35 kW / 1.8 hp /
7000 rpm
R2,250
Excl. VAT



4-Stroke Petrol Engine

212 cc
5.25 kW,
7 hp @ 3600
Horizontal



R1,450 Excl. VAT

Diesel Engine 8RC

296 cc
(Borehole
pumps),
6 kW, 8 hp,
1800 rpm



R4,950 Excl. VAT

PRICES PER UNIT, EXCL. DELIVERY & VAT. VALID FOR COD PURCHASES ONLY. WHILE STOCKS LAST. MODELS AVAILABLE MAY DIFFER FROM ILLUSTRATIONS. E&O

Visit our branch on the N14 Highway, Muldersdrift, Krugersdorp



DICLA

Agricultural and Construction Machinery



Vegetable Tunnels, Poultry and Irrigation



Trailers and Agricultural Implements



DICLA

Plot 11 Van Wyksvlei
Muldersdrift
011 662 1371
gerry@dicla.com

Machinery
Ernst Eichhorn
082 071 5795
diclasales@gmail.com

Horticulture
Hannes Botha
083 708 9269
hannes@dicla.com

Mon-Fri 07:30-17:00 Visit our website www.dicla.com



BEEKEEPING

From page 13

to mishandling of the bees by the beekeepers.

The third question, "Does the fault lie with the beekeeper?" beggars the answer that there are some instances that the beekeeper can be at fault.

He catches a feral swarm in a tree that has found a desirable place to set up home, places the swarm in a beehive brood chamber, confines the queen so that she is not able to fly out and places the unit in a nice warm sunny position. These bees are stressed, the box is too small and too hot and the ventilation very poor. The queen starts egg laying and once there is brood the beekeeper removes the restriction of the queen. This swarm will not develop to any sizable producing swarm and will recede in numbers. The next beekeeper has a beautiful strong swarm loaded with 20 kg of honey. To his



Colony Collapse Disorder ... deserted hive with unfinished comb

absolute delight, he crops off all the honey and the swarm dies of starvation because he has not left enough honey for the bees to continue.

Then there is the ignorant fellow who overstocks his apiary with 20 swarms when the carrying capacity of the areas is only sufficient for eight swarms. The swarms die

of starvation or swarm off to find better hunting grounds. There is that greedy beekeeper who continually moves his swarms and follows the next flowering crop. He does not rest his queens, who eventually stop laying and the swarms recede and die out.

The wax moth takes over and

he blames the wax moth invasion and not his total ignorance that queens need at least 14 weeks rest per year. Then there is the beekeeper who moves his hives at night without closing down the entrances. During the travel to the new site, the confused swarms, shaken up on the thumping truck, move out of the hive brood chamber. He off loads, thumps the hives down in the new and strange locations. When daylight sets in the queens are lost to absolute confusion and they move away leaving most of the swarm behind to die. The newcomer to beekeeping, a keen and enthusiastic nature lover, too often opens his hives to see how things are getting on. He breaks the seals the bees have made to control the inner temperatures of the hive, perhaps exposing the

Continued on page 17

Teramo Trading cc

- No Algae
- No Rust
- Non Toxic
- Cleaner Water For Healthier Living
- Multi Purpose Tanks in Stainless Steel

Available Sizes	Dimensions	Dimension With Stand
300 Litre	800 x 780	1000 x 780
600 Litre	1450 x 780	1650 x 780
1200 Litre	1500 x 1030	1750 x 1030
1800 Litre	1500 x 1220	1750 x 1220

For More Information Please Contact

M. Teladia 082 899 3786
J. Wang 076 933 3398

Landline 011 914 4223
eMail - teramo@telkomsa.net



TEL: 011 822-8503
011 964 1323
FAX: 086 630-2616
sales@gas2u.co.za
www.gas2u.co.za



S26° 0.180 E28° 24.807
14 Magic Avenue
Bapsfontein
(near BP Garage)

Walk In Special Price
9kg - R152.00
19kg - R320.00
48kg - R808.00
We also do deliveries

GAS GEYSER SPECIALS
Quote reference Bronberger to qualify

- 6 Litre Atlas Gas Geyser – R1 385.00
- 8 Litre Atlas Gas Geyser – R1 640.00
- 10 Litre Atlas Gas Geyser – R1 890.00
- 12 Litre Atlas Gas Geyser – R2 395.00



- 16 Litre Atlas Gas Geyser – R2 772.00
- 20 Litre Atlas Gas Geyser – R3 778.00
- 20 Litre Atlas Gas Geyser with Fan – R9 337.00



Every day is pensioners day
- Less 10% (Gas Only)

QUALIFIED TECHNICIANS - Gas Installations & Repairs - Certificates of Compliance
ALL PRICES INCLUDE VAT & ARE VALID WHILE STOCKS LAST
We deliver throughout Gauteng. Call for delivery charges.



AFRIBORE

Experts on the East Rand for:

A COMPLETE WATER SERVICE

**Borehole Drilling
Pump Installation
Cleaning & Yield Testing**

**082 945-7423
083 656-8385
afribore@icon.co.za**



FARMTRAC delivers more kW per Rand.

Est. 1964
50
Years

www.vukaniagri.co.za



Every FARMTRAC Tractor comes standard with:

2 Year Manufacturer Warranty	2 Stage Dry Type Air Filter
60 Litre Fuel Tank	8/2 Carraro Transmission
Counterweight Set	Double-Sided Access
Farmers Kit*	Grease Gun
Halogen Headlamps	Hard Top Canopy
Independent PTO	Linkage Drawbar
Oil Immersed Disc Brakes	Power Steering
Rear Work Light	Wheel Jack

FT6050 2WD 4WD 37kW	FT6060 2WD 45kW	FT6075 2WD 4WD 56kW
R 230 900 R 277 900	R 255 900	R 265 900 R 317 900

2.5% INTEREST

* Subject to Bank Approval. Offers exclude VAT and Delivery, Terms and conditions apply.

Heritage Series

2WD|37kW

FT6050 R230,900

SAVE! R83,000

NOW! R197,900

4WD|37kW

FT6050 R277,900

SAVE! R40,000

NOW! R237,900

2WD|45kW

FT6060 R255,900

SAVE! R37,000

NOW! R218,900

2WD|56kW

FT6075 R265,900

SAVE! R38,000

NOW! R227,900

4WD|56kW

FT6075 R317,900

SAVE! R46,000

NOW! R271,900

Robust, powerful and cost-effective, Farmtrac Tractors are ready to work hard for you. Exemplary reliability, safety and driver-oriented comfort means every Farmtrac Tractor delivers convincing performance in all environments. A Farmtrac Tractor is a master of all applications, whether it's working in a small vineyard or an open crop field, it's a perfect all-rounder.

DEALERS WANTED :
LIMPOPO | KZN | E CAPE | W CAPE | NORTH WEST
PIET : 083-251-4827 | RUSSELL 081-453-6293

FARMTRAC
TRACTORS

Simply reliable.

BEEKEEPING

From page 15

bees to a sudden cold snap before they can reseal the draughty gaps.

There is the fellow who loves and has a passion for his bees. He places them in a well sheltered corner of his plot, provides shade from the hot sun, and covers them with a blanket for the cold winter nights. One day the bees, unaware of the cold south wind, fly out and are struck down in the cold, never to return to their hive.

The killing of swarms is causing the largest loss of swarms. As urban areas develop, more households experience the presence of swarming bees entering their premises and report their problems to their local councils. Unconcerned and unaware of the bee crisis, the councils just destroy the swarms.

One council reported that they kill up to 80 swarms a month during the three months of the swarming seasons.

It is a costly undertaking for beekeepers to remove and save these swarms so the councils resort to the quick fix method and just kill. There is the call out, "Get the bee man, he will sort them out, chop, chop." He arrives and in 20 minutes he poisons the entire swarm at a handsome fee,... after all it's his living.

Not to lose out, where the

possible loss of our bees is at crisis level, the Dept of Agriculture, Forestry & Fisheries, abiding by the laws, enforces the removal of the blue gum trees so vital for the importance for the survival of our bee colonies throughout our land, on which the bee industry and the fruit, nut and seed producers so anxiously depend upon.

However all is not doom and gloom, thanks to those many folk who love and cherish the presence of bees on their premises and who welcome and often request the beekeeper to place hives on their farms and plots.

Article by Peter Clark, Chairman Eastern Highveld beekeepers' Association at 011 362-2904 and information systems, Mike Alter at 011 965-6040



Eucalyptus trees, aka bluegums
... great bee forage

Beekeeping course for beginners

"A one day elementary course on beekeeping for those intending to keep bees and the newcomers.

The course covers the full spectrum of beekeeping.

Cost R300 includes refreshments.



At Highveld Honey farm, 186 Us Street, Rynfield Benoni A.H.
Commencing 9.00am to 12.30pm on Saturday 13 May 2017
Folk in tending to come please phone the course convener
Peter Clark (011)362 2904"

Borehole Drilling



Throughout Gauteng

- 50 years' experience
- Modern, powerful equipment
- Prompt, reliable service
- Best rates and advice



AND: We can arrange your associated requirements, eg: borehole siting, pump installation, piping, electrical work, etc.

Lanseria Drilling

BOREHOLES - DRILLING & REPAIRS

076 727-6464

082 552-6071

011 957-2588

Genius Landbou
Import & Export cc

Landini Tarlton
082 929 5850

**ONS HET IETS VIR ELKE
BOER SE BEHOEFTE**

Landini **McCORMICK**

**WE STOCK A WIDE RANGE OF
TRACTORS AND IMPLEMENTS**

**BALERS
WRAPPERS
RAKES
DISC MOWERS
TEDDERS**

NEW **FALCON** SLASHERS
BALE HANDLING MACHINES

**A WIDE RANGE OF
BP IMPLEMENTS
AVAILABLE**

IN STOCK:

**BALE TWINE FOR
SQUARE BALERS
ROUND BALERS
BIGPACK BALERS**

**HIGH QUALITY NETTING
FOR ROUND BALERS
& WRAP PLASTIC
FOR WRAPPERS
AVAILABLE AT
GOOD PRICES**

**WIDE RANGE OF
PALLET NETTING
& HAND STRAPPING**

GPS: 26°04.157'S 27°40.845'E

TEL: 011 952 9926/7/8

FAX: 086 571 5578

marco@geniuslandini.co.za

admin@geniuslandini.co.za

**ENGEN OLIE MET UITKLOP PRYSE
ENGEN OIL AT KNOCKOUT PRICES**



**20 litre
210 litre**

Chainsaw kickback can be a killer

The death last month of a tree surgeon in Bermondsey, London highlights just how dangerous chainsaws can be, even in experienced hands. Indeed, short of a loaded gun with the safety catch off a chainsaw is probably the most lethal item you as a small-holder will own. The victim had, by all

accounts, followed all the relevant health and safety regulations in that he was firmly harnessed to the tree thus preventing him from falling to the ground in case his ladder should slip or break, and in addition his saw was tethered to the tree by a rope.

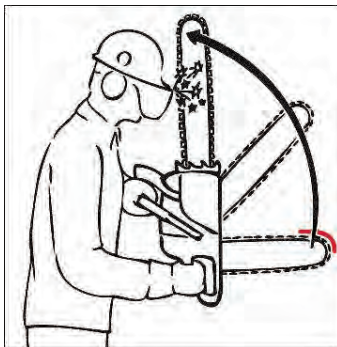
However, while using the saw to cut a limb, he is believed to have suffered a "kickback" with the saw jumping into his neck and slicing into his carotid artery, resulting in him quickly losing consciousness and bleeding rapidly to death. Co-workers on the ground only realised that something was amiss when they heard the tethered saw droning monotonously on rather than revving and slowing down again as is usual with an

operating saw. Looking up into the tree they found their colleague slumped in his harness, dead, with the saw dangling from its rope beside him, still idling.

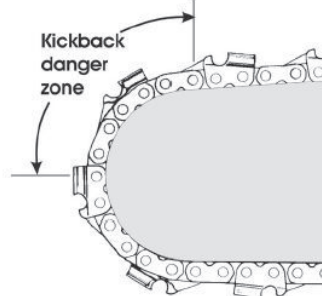
Kickback occurs as a result of the movement of the chainsaw chain around the guide bar. Typically, the chain is driven out of the bar on the top side of the bar, around the nose of the bar and is drawn back into the machine along the bottom.

This motion therefore results in two distinct actions. Using the saw to cut from underneath the branch, ie cutting with the top edge of the saw, results in the saw being pushed back towards the operator and it is the task of the operator to hang on to the saw to prevent this backward motion. Using the saw to cut from the top down, ie with the cutting

Continued on page 21



Chainsaw kickback: the aftermath



Captain Beetheart
PETS FOOD
PURE FROZEN MINCE
CHICKEN & BEEF

Top quality pure frozen mince
BEEF OR CHICKEN
DELIVERED TO YOUR DOOR
Minimum Order for Home Deliveries: 1 case = 16kg
072 838-0552
ronaldc@polka.co.za

WaterMan
Drilling & Pumps

- Borehole Yield Testing SANS 10299 BWA app
- Water quality testing SANS 241
- Rehabilitation of Existing Boreholes
- Borehole pump sales & installation
- Exploration & Monitoring drilling
- Reverse Circulation Drilling (RC)
- Symmetric Drilling
- Large Diameter Drilling
- Water borehole drilling

info@watermandrill.co.za
www.waterman-drilling.co.za
BRONKHORSTSPRUIT

Tel: 013 932 1740
Cel: 079 526 7196
Fax: 013 932 2352

SPARTS
MOTOR SPARES

Tel: 011 967 1295
011 967 2151
Cell: 072 041 7819
Fax: 011 963 0473
086 218 4686
Email: spartsc@web.co.za



261 & 262 Stanley Road, Pomona, Kempton Park, CNR of Stanley & High Road
Monday to Friday 07:30 to 17:00, Saturday 08:00 to 13:00, Certain Public Holidays 08:00 to 12:30

Justic Veevoere

AGENT FOR: **PET**, **Montego**, **Speedi-Beet**, **Fibre-Beet**

Day old chickens available

Dog vaccinations available

Expert nutritional advice.
Christelle King
BSc (Agric) Animal Science

Epol
THE PERFECT BALANCE

11 Rooth Street,
Bronkhorstspuit
013 932 1888
072 361 8934
christelle@justic.co.za

Delivery to surrounding areas

SUMMER SIZZLERS

MARCH 2017

Brushcutters

33cc
B Style

included:
Grass Blade
Nylon head
Toolkit &

R 1518.48 incl vat ex vat

R1332

Water PUMPS

RGP 50 Petrol
50mm



R 2848.90 incl vat

R2499

ex vat

RGHP 50E Petrol
50mm
High Pressure



R 4900.86 incl vat

R4299

ex vat

RGHP 40-2 Petrol
40-2
High Pressure



R 6496.86 incl vat

R5699

ex vat

RGTP 80 Petrol
80mm
Trash pump



R 4900.86 incl vat

R4299

ex vat

RDHP 50E Diesel
50mm
High Pressure



R 11341.86 incl vat

R9949

ex vat

RDP 50E Diesel
50mm



R 8890.86 incl vat

R7799

ex vat

GENERATORS

PETROL 650W

650W
2-Stroke



RGG950

R 1499.00 incl vat

R1314

ex vat

1.1kW



RGG1456

R 2848.86 incl vat

R2499

ex vat

2.5kW



RGG3400

R 3418.86 incl vat

R2999

ex vat

6.3kW



RGG7150E

R 5698.90 incl vat

R4999

ex vat

ELECTRIC START
* Battery excluded

Earth Auger

EAG 4300

DIY series
43cc

FREE
200mm
Bit included



R 2734.86 incl vat

R 2399

ex vat

Shredder

6.5Hp

76mm
Branch diameter
Handling capacity



SS1002

R 11398.86 incl vat

R9999

ex vat

Chainsaw

SGL5200
52cc



R 1537.90 incl vat

R1349

ex vat

16L Sprayer

SHS16L Y

16L
S/S lance



R 397.90 incl vat

R349

ex vat



RED
RHINO
PRODUCTS

**CALL FOR YOUR
NEAREST STOCKIST**

Tell 011 668 1923/4
010 591 0432
Fax 011 668 1925
Sales@klbengineering.com
info@klbengineering.com
www.red-rhino.co.za

JHB South
JHB West
PTA CBD
PTA East
PTA North
PTA West
Ermelo
Vaal

011 893 0281
011 660 5509
012 323 2053
012 804 5273
012 546 4496
081 736 4096
017 819 2804
016 455 2556

Ts&Cs apply. Actual product may vary from pictures. E&EO permitted. All price EXCLUDE VAT. Valid for MARCH 2017 While stock lasts.

MACHINERY

The world's most powerful backpack blower?

What is said to be the world's most powerful backpack blower, Maruyama's Tornado BL9000, delivers an astonishing 29,83m³ of air per minute, at 362 km/h, thanks in part to a specialised tip on its delivery pipe. This makes it ideally suited as part of your grass fire-fighting arsenal as it is powerful enough to blow out even strong fires.

The BL9000 is powered by a 79,2cc two stroke engine. The entire unit weighs less than 11 kg, and is mounted on a padded frame with extra wide shoulder straps for operator comfort. The unit is spring-mounted to the frame to reduce vibration. The fuel tank holds 2,1 litres, and the unit incorporates a

flat base on which the operator can rest his foot to secure the unit while pulling the starter cord.

Two controls are planned for the BL9000. Currently, it is available with a pistol grip control throttle on the blower pipe. Later this year Maruyama plans to release a hip-control throttle.

Because it is designed for use in harsh environments the BL9000 is fitted with a two-

stage air filter system.

Carburetion is through a quality Walbro unit and engine noise is kept to 73 decibels through a two-piece aluminium muffler.

Maruyama is Japanese manufactured of power equipment. More than 125 years old, the company's products, which include brushcutters, trimmers, chainsaws and other items for the landscaping and garden

industry are sold and serviced in South Africa through Turfmaster dealers.

For more information: Turfmaster, tel 011 730-3400



KICKBACK

From page 19

action taking place with the bottom of the guide bar, results in the saw being pulled towards the branch and the operator now needs to hang on to the saw to prevent it from being pulled in this direction.

However, when the chain moving over the rounded nose of the guide bar encounters the wood as it passes over the top half of the nose the motion is to push ~ rapidly ~ the bar upwards and away from the branch being cut. This is called kickback. If the

motion is violent enough, ie if the chain is spinning fast enough, or if the chain should encounter a hard obstruction such as a buried nail, the kickback can be severe, as the tree surgeon in Bermondsey found out to his misfortune.

Continued on page 22

Dam Linings Damvoerings



Reservoir Linings



Mesh Dams



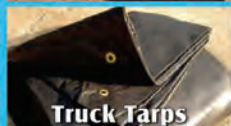
Zinc Dams



Earth Dam Linings



Feedcovers



Truck Tarps



TATA MA TARPS
& LININGS

072 279 3294
www.tatamatarps.co.za

CULLINAN PUMP REPAIR SERVICES CC

Supply and repair of all types of **Pumps**,
Mechanical Seals, Valves, Piping, Fittings,
Rotating Unions and Industrial Clutches & Brakes.

Reconditioning of all makes of Industrial,
Agricultural and Commercial Pumps.

Plus - Servicing the Mining Industry.

Motor Rewinding and General Engineering Services.

Call Ryan Bosch : 082 899-3769 or 082 656-7845.

e-mail : boschpumps@gmail.com

Agents for :



Specials on Borehole Pump kits
as well as Control Equipment & Starter Protection,
Fountain pumps, Solar pumps, Sewerage,
Single and Multi-Stage Pumps.

www.gatorpumps.co.za

Ask about our borehole pump anti-theft protection.
We collect and deliver - (ts&cs apply.)



AMBERLINK HENS

☀ **6 week old Pullets**
(All vaccinations done to 6 weeks, including MS Vaxsafe)

☀ **17 week old Point of Lay Hens**
(All vaccinations done)

AVAILABLE MONTHLY **FARM FRESH**
EGGS CC

016 371-2154
082 903-6595



LAND RIGHTS

Land ownership (and occupation) in SA

In 2017 land issues remain as contentious in South Africa as they ever have, with Pres Zuma urging South Africans in his sonorous State of the Nation Address to “stay on the land”. Meanwhile, activists argue that the pace of land reform is slow and biased, while legal experts are scratching their heads about how some proposed reforms would be implemented. In 2014, the Dept of Rural

You can't, as a landowner, kick difficult or non-paying tenants or fired workers off your land willy-nilly. Know your rights

Development & Land Reform announced plans to redistribute 50% of commercial farmland to farmworkers as a way of redressing past injustices. The announcement ~ seen by some as a political game to fend off the Economic Freedom Fighters and its call for expropriation

of land without compensation ~ proved to be illogical and impracticable.

Meanwhile, the government is said to be pumping millions of rand into failing farms for the transfer of business shares to a relatively small number of farmworkers and farm dwellers, with the biggest

benefit seeming to remain with the white landowners.

In the meantime smallholders, be they landowners or tenants should be sure of their rights.

Many smallholders have tenants living on their property and it is wise to be aware of the status of each of the parties in such a situation.

☐ A lawful occupier is a person who resides on land with the permission of the owner of the land. This consent does not have to be expressed (in writing or orally) but may also be given tacitly.

☐ If you give your worker accommodation he/she is a lawful occupier.

☐ If you rent out rooms or cottages, the tenants are lawful occupiers as long as they pay rent.

☐ If you as the owner are aware that someone has moved on to your land and you make no effort to evict them, you have given tacit consent through your

Continued on page 23

KICKBACK

From page 21

Of course, one can mitigate against the effect of kickback in a number of ways. Firstly, never allow the nose of the cutting bar to do the cutting, rather ensure that only the top or bottom edges of the cutting bar engage the wood.

Secondly never work with the saw higher than waist height. That way a severe kickback will only result in a severe arm injury, severe leg injury or contact with your torso. In the case of the latter two contacts at any rate damage should be prevented if you are wearing approved safety clothing.

Thirdly, never use a chainsaw with only one hand. Always ~ consciously ~ have a firm grip on the saw with both hands.

Japanese Technology
Made in Japan

MARUYAMA

Still the BEST warranty in the Industry!

- Brush Cutters**
 - Over 55,000 sold to date!
 - Ekurhuleni Municipality bought more than 1500 units!
 - Best selling 50 cc Brush Cutter in SA!
- CER Engine has the Lowest:**
 - 1) Fuel Consumption
 - 2) Running Cost
 - 3) Environmental damage
 - 4) Pollution
- Backpack Blowers**
(See the video clip on our website for the Terminator BL9000)
- Pole Pruners**
- Mist Blowers**
- Chainsaws**
- Hedge Trimmers**
- Handheld Blowers**
- Granular Spreaders**
- Nylon Line**
- Blades**

TURFMASTER (PTY) LTD

LAWNCARE PRODUCTS

TEL 011 730 3400

No.1 Third Avenue, Vorsterkroon, Nigel
Website: www.turfmaster.co.za
Email: info@turfmaster.co.za

Branches & Dealers Countrywide

LAND RIGHTS

From page 22

conduct. So if a spouse, family member or friend comes to live with your worker or tenant in your accommodation and you do not object, you have thus given tacit consent.

❑ An unlawful occupier is someone who resides on land without the express or tacit permission of the owner.

❑ If you have dismissed your worker from your employment, in accordance with the provisions of the Labour Relations Act, and ordered him/her to leave your property but he/she continues to stay in your accommodation, that person then becomes an unlawful occupier, because you have withdrawn your permission for him/her to live there.

❑ A trespasser is someone who enters property without the permission of the owner and can be arrested by the

police.

While the relationship between the owner and the worker or the tenant remains cordial, all is well. The difficulty arises when the relationship is no longer good and you want to get rid of the person.

The eviction of persons from land or accommodation is regulated by various laws.

The following laws regulate different legal situations:

❑ The Extension of Security Tenure Act, 1997 (Act No 62 of 1997) (ESTA Act) governs eviction from farm land.

❑ The Prevention of Illegal Eviction from and Unlawful Occupation of Land Act, 1998 (Act No 19 of 1998) (PIE Act) - anyone who is an unlawful occupier, which includes tenants who fail to pay their rentals and bonds, is covered by PIE.

These laws are quite often difficult to interpret and apply.

Eviction from land is always done in terms of a court order, whether the person is a labour tenant, an occupier (whether unlawful or not), a farm worker or even a trespasser.

The eviction of an occupier or trespasser must be done in accordance with the applicable laws, otherwise such eviction will be illegal.

Under most circumstances a police member will be requested to deal with the "problem" of an occupier when the owner of land lodges a complaint at the Community Service Centre of the Police Station in the area. Whenever the occupier enjoys the protection of PIE, the police member should advise the complainant to consult with a lawyer in order to invoke the legal eviction procedures.

For an eviction to happen lawfully, these procedures

must be followed:

❑ The owner must give the occupier notice of his/her intention of going to court to get an eviction order. This notice must contain a large number of details, so it is best drawn up by someone who knows what is required by the Act.

❑ The owner must apply to the court to have a written notice served on the occupier stating the owner's intention to evict the occupier.

Continued on page 25

More than 100 years' experience

Your Preferred Supplier of Agri-equipment, S p a r e s & C o n s u m a b l e s

Fertilizers for the Summer Season



**Selected Hardware at
Never-to-be-repeated
Prices!!**

**SPECIAL:
Vegetable Seed Packets
TO CLEAR!!**

**A Great
Selection
of New & Used
Implements!!**



FALCON

Full range of Falcon
Slashers,
Haymakers,
Mowers
& Rotavators.
ALSO Falcon spares!



Spike roller - tractor-drawn
& hand rollers
available



Grass sowers & rollers



Sickle bar cutter



Selection of 4 & 5
wheel rakes



Selection of tipping
trailers & farm trailers



Post hole digger



Benfarm fine seed
planter



2 Row planter 4 Row planter



Howard Rotavator



Wide selection of 2, 3 and more share Mouldboard
& Disc Ploughs



Vibroflex cultivators



3m Lime spreader



Bredal Manure Spreader



500 litre fertilizer
spreader



600 litre boom sprayer



- Herbicides, Pesticides,
- Poisons & Baits,
- Veterinary Pharmaceuticals
- Veterinary Equipment

**In all pack sizes
for farmers and
smallholders!!**

**ON SPECIAL NOW!
COARSE SALT
A GRADE 50kg BAGS**

BREDAL



KONGSKILDE



Tractor & implement spares



20ness Investments cc t/a

BENFARM

65 Unity Ave, New Modder, Benoni Tel 011 423-2801
Ronnie 082 900-5400 Sales & Spares 074 362 6696 Admin & Accounts 072 740 9102
email 20ness@mweb.co.za Website coming soon!



Full range of Jo-Jo tanks

LAND RIGHTS

From page 23

☐ The court must serve the notice at least 14 days before the court hearing. The notice must also be served on the municipality that has jurisdiction in the area.

If any one procedure is left out, the eviction is unlawful. It is also a criminal offence to directly or indirectly receive or solicit payment of any money or other consideration as a fee or charge for arranging or organising or permitting a person to occupy land without the consent of the owner or person in charge of that land. The court will only give an eviction order if it is proved that:

- ☐ The person who is applying to evict an occupier, is in fact the owner of the land;
- ☐ An occupier is an unlawful occupier;
- ☐ The owner has reasonable grounds to ask for the eviction;
- ☐ The local authority or any other owner of land in the

area can make alternative land available for the occupier.

If the court grants an eviction order, the order will state a date by when the occupier has to leave the land, and also the date on which the eviction will take place if the occupier does not vacate the land.

The court has to balance out and reconcile the opposed claims in as just a manner as possible, taking account of all the interests involved and the specific factors relevant in each particular case, including the interest of the owner.

The sheriff of the court will implement eviction orders. In some cases, where there is sufficient information to indicate that the sheriff and his/her employees may be exposed to injury, death or damage to property, the police will be on hand to ensure law and order and protection.

Where land invasion takes place, it is most important that

the owner immediately reports the matter to the police. Land invasions are often associated with the occupation of land by force. The act also allows for urgent eviction proceedings. This will be granted if the owner can show that:

- ☐ There is real danger of substantial injury or damage to any person or property;
- ☐ There is no other way to solve this situation;
- ☐ The owner is going to suffer more if the occupier stays on the land, than the occupier will suffer if he or she gets evicted. In such a case, the owner can go to court and get a final order for the eviction.

If the court grants an order:

- ☐ The eviction order will state a date by when the unlawful occupier has to leave the land, and also the date on which the eviction will take place if the unlawful occupier does not vacate the land.

Q The court order may also make an order for the unlawful occupier's buildings to be demolished. Only the sheriff of the court can carry out an eviction. The police must investigate to determine whether a common law offence has been committed.

TRACTOR BROKEN?

We repair & service all agricultural tractors, implements & balers



WHERE POSSIBLE, WE COME TO YOU!

ALLISON'S FIELD SERVICES

William 083 309-7701
Fax 0866 19 11 91

120ℓ Lae Druk R4800
12 buise

200ℓ Lae Druk R6800
20 buise

260ℓ Lae Druk R7400
26 buise

Nuut 360ℓ Lae Druk R9400
36 buise

260ℓ Hoë Druk R10900
26 buise

Installering kan gereël word teen ongeveer R4000



GRATIS VOERTENK, ELEMENT, TERMOSTAAT EN ANODE

Panele beskikbaar teen

260w R2800.00 3 teen R7350.00

300w R3200.00 3 teen R8700.00



4 x 100Ah Gel batterye R8400.00

Pryse sluit BTW in.
Pryse mag verander.



SONKRAG
SOLAR VERSPREIDERS

Tel.: 012 8191081. 0828825145

25°40'.761"S, 028°19'.547"E • sonkragsolar@gmail.com • www.sonkragsolar.co.za



MS 170
Petrol Chainsaw
1.3 kW • 30.1 cc



MS 210
Petrol Chainsaw
1.6 kW • 35.2 cc



MS 250
Petrol Chainsaw
2.3 kW • 45.4 cc



MS 310
Petrol Chainsaw
3.2 kW • 59 cc



MS 361
Petrol Chainsaw
3.4 kW • 59cc

NEW 20ml HP and HP Ultra Oil Sachets
For easy mixing with 1l of fuel. Ideal for use with the STIHL 1l mixing bottle.



Introducing the perfect high performance chainsaw from STIHL

The robust 3.8kW STIHL MS 382 is ergonomic and lightweight, with an excellent power-to-weight ratio. Despite being a high-performance machine, it delivers impressive fuel consumption - up to 20% less than previous STIHL models. The STIHL Ematic™ bar lubrication system ensures longer wear and reduced chain oil consumption compared to conventional lubrication methods, and an enhanced oil pump ensures a consistent and steady flow of oil to the chain and guidebar.



“UP TO 20%”
LOWER FUEL CONSUMPTION

FOR ADVICE ON THE CORRECT PRODUCT FOR THE JOB CONSULT YOUR STIHL DEALER

ALBERTON: Lawnmower Clinic 011 907 8484 • **BENONI:** Master Mowers 011 395 2648 • **BRITS:** Enviro Chainsaws Brits 012 252 2479 • **BRONKHORSTSPRUIT:** Bronkhorstspuit Fietswinkel 013 932 0531 • **BRYANSTON:** Lawnpower 011 705 3556 • **CENTURION:** Enviro Chainsaws Centurion 012 653 2479 • **DELMAS:** Deltool 013 665 3192 • **HEIDELBERG:** Masakhane Industries 016 349 6927 • **JOHANNESBURG:** Green's Industrial 011 614 0295 • **KEMPTON PARK:** Precision Mowers 011 391 0708 • **KRUGERSDORP:** GP Lawnmowers 011 955 3610 • **LYNWOOD:** Mowtown Lawnmowers 012 348 6427 • **OAKDENE:** Glen Mowers 011 436 2220

We have the range. You have the choice.

STIHL has an extensive range of electric and battery-powered chainsaws marked with the same performance and quality as its petrol-powered range. Whether you need light, quiet operation or complete cordless mobility and convenience, STIHL has the solution. The choice is yours.

90
YEARS
OF CHOICE



MSE 170 C-BQ
Electric Chainsaw
1.7 kW • 4.3 kg



MSE 190 C-BQ
Electric Chainsaw
1.9 kW • 4.4 kg



MSE 210 C-BQ
Electric Chainsaw
2.1 kW • 4.6 kg



MSE 230 C-BQ
Electric Chainsaw
2.3 kW • 4.8 kg



MSE 250 C-BQ
Electric Chainsaw
2.5 kW • 5.8 kg



MSA 160 C-BQ
Cordless Chainsaw
36 V • 3.2 kg
Excl. battery & charger



MSA 160 T
Cordless Arborist Chainsaw
36 V • 1.9 kg
Excl. battery & charger



MSA 200 C-BQ
Cordless Chainsaw
36 V • 3.3 kg
Excl. battery & charger

Batteries and chargers for STIHL cordless chainsaws are sold separately. Speak to your STIHL dealer about which cordless solution best suits your needs.

E&oe.

"Serving the public since 1932"

TURFMASTER (PTY) LTD

LAWNCARE PRODUCTS

TEL 011 730 3400

No.1 Third Avenue, Vorsterkroon, Nigel

Website: www.turfmaster.co.za

Email: info@turfmaster.co.za

Valid to end March '17 or while stock lasts.

Centurion: 012 653 8342

Durban: 031 701 8233

Nelspruit: 064 420 4482

P.E.: 041 581 8443

Roodepoort: 076 921 5469

Bellville: 021 945 4106

REPLACEMENT PARTS FOR MOST MAJOR BRANDS:

Stihl, Honda, Briggs & Stratton, Husqvarna, Robin, Murray, etc

Lawnmower Blades



Prices excl. VAT

Wolf Tofrom R105

Tandem HDfrom R99

S/Cross 16"from R85

Rolux Ninjafrom R22

Mirage P60from R25

Alpha Swingfrom R27

Flymo E250from R99

MANY MORE, call us!

Air Filters



Prices excl. VAT

Stihl FS250from R45

Kawasaki TD40from R12

Honda GX390from R55

Husqv. 36,41,142from R57

Shindaiwa B45from R65

Echo SRM2400from R50

Kohler XT7/8from R12

MANY MORE, call us!

Ride-on Mower Blades



Prices excl. VAT

John Deerefrom R95

MTDfrom R38

Murrayfrom R60

Craftsmanfrom R155

Snapperfrom R130

Hustlerfrom R165

Simplicityfrom R210

M/Fergusonfrom R175

Honda GXV160 repl. spares

Prices excl. VAT

Air Filterfrom R63

Recoil Starterfrom R265

Handlefrom R25

Pistonsfrom R135

Ringsfrom R69

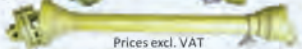
Carburettorfrom R295

Gasket Setfrom R75

MANY MORE MODELS

AND BRANDS, call us!

PTO'S



Prices excl. VAT

• 1 m/1,2 m Slasher P.T.O M60R965

• 1,2 m /1,5 m Slasher P.T.O M70R1,430

• 1,2 m /1,5 m Slasher P.T.O M60

with slip clutchR2,025

• 1,8 m Slasher P.T.O M70

with slip clutchR2,170

FALCON/FIELDMASTER SLASHER BLADES, call us!

PRICES ARE EXCL. DEL. & EXCL.VAT. COD ONLY. WHILE STOCKS LAST. E&EO

BUILDING A HOUSE?

don't look anywhere else!

BRICKS * SAND * STONE CEMENT * HARDWARE

B-HOUSE BUILDING SUPPLIES

C/o Garsfontein Rd & Blesbok St, Mooikloof Pretoria East

Tel: 012 480 0088

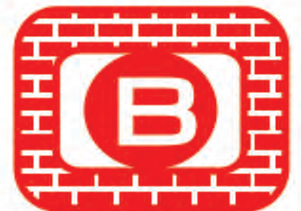
Cell: 082 558 9722

www.b-house.co.za

Email: sales@b-house.co.za

Open: Mon - Fri: 07:00 - 17:00

Saturday: 07:00 - 13:00



B-HOUSE

BUILDING SUPPLIES

Mini & maxi loads of Building Materials

STUMBELBLOC



BUILD HOUSE WALLS FOR R 98, 00/m²



Contact us now for more information:

www.stumbelbloc.com
or call 083228 8036

MAKE YOUR OWN BLOCKS AND BUILD YOURSELF

Christmas turkey? Now grow your own

If you were dismayed at the price you had to pay for the turkey that you devoured at your Christmas dinner, now is the time to start growing your own for this year's festive season, and maybe even considering growing turkeys as a business prospect. Almost all the turkey sold in South Africa is imported. If you start planning now you will have adult turkeys available for sale by December.

If you raise them to eat, you'll have a much more wholesome and flavourful turkey than anything you could buy at the supermarket and even if you just want to have them wandering around on your plot to help in pest control, they are relatively easy to keep, once they've got past the early stages.

If you are new to the turkey world, here is some basic information. The male is called a tom, the female a hen and a baby is a poult. The female is smaller than the male and generally less colourful. Turkeys have wingspans of 1,5 – 1,8m. Noticeable features of turkeys are the red, fleshy stretches of skin and bulbous growths located around the head and neck region. These structures are the:

- ❑ **Wattle**, which is the red skin that hangs from the neck
- ❑ **Caruncle**, which are fleshy bumps on the head and neck
- ❑ **Snood** – the long flap of flesh that hangs over the beak



Another prominent and noticeable feature of the turkey is its plumage. Voluminous feathers cover the breast, wings, back, body and tail of the bird. Male turkeys

have what is called a beard located in the chest area. Male turkeys also have sharp, spike-like projections on their legs called spurs.

The usual lifespan for a turkey is ten years, and pure breed turkeys take approximately four to five months to grow to full size.

The hen turkeys take 16 weeks to mature completely,

and average 3,6 kg to 7,2 kg in weight. The tom turkey takes approximately 19 weeks to mature and weighs between 7,2 kg and 10,8 kg. Larger tom turkeys may weigh up to 18kg, but take a few more weeks to mature.

For breeding purpose keep one tom for each ten hens. Turkeys are highly social and become very distressed when isolated.

As with all poultry, it is preferable to keep pure-bred birds, bought from a reputable breeder.

Like most agricultural businesses, turkey farming requires adequate knowledge and careful planning of how to raise turkeys, even if you do allow them to roam around free in a range.

If considering turkey rearing as a small business, do some

Continued on page 31

 <p>BLOWER STIHL BG50 27.2CC</p> <p>R2000.00 Excl VAT</p> <p>STIHL</p>	 <p>30cm BAR CHAINSAW STIHL MS170 30.1CC</p> <p>R2275.00 Excl VAT</p> <p>STIHL</p>	 <p>BRUSHCUTTER STIHL FS250 40.2CC</p> <p>R5265.00 Excl VAT</p> <p>STIHL</p>
---------------------------------------------------------------------------------------------------------------------------------------------------------------------------------------------------	---------------------------------------------------------------------------------------------------------------------------------------------------------------------------------------------------------------	---------------------------------------------------------------------------------------------------------------------------------------------------------------------------------------------------------



GREEN'S INDUSTRIAL SUPPLIES

Sales, service and repairs.

Authorised **STIHL** dealer.

Tel: 011 614 0295/6

www.greensindustrial.co.za

A-Frame house



COMPLETE YOUR HOUSE WITH OUR STEEL STRUCTURE

Building plan supplied
Price excludes building work

210m² STEEL STRUCTURE ERECTED

R201 400 excl VAT
Steel structure for 3 bedrooms and 2 bathrooms

101m² STEEL STRUCTURE ERECTED

R126 300 excl VAT
Steel structure for 2 bedrooms and 1 bathroom with carport



SUFS STEEL FRAMES
Buildings | Factories and Warehouses | Design and Construction

www.aframe.co.za

Pieter 082 497 4247 | info@aframe.co.za |

Tel: 011 675 7491 | Fax: 086 610 4461

Disclaimer: Galvanising contains zinc. Customers use galvanised products for livestock and humans entirely at their own risk.

POULTRY

From page 29

research in your area.

Approach catering companies, event organisers, butchers and supermarkets to find out if they will buy from you. Or contact produce agents who would be able to sell your birds on your behalf. All the other considerations regarding starting a smallholding-based business apply. Are you close enough to your

markets to make it a viable business venture?

Next, draw up a budget taking into account expenses such as buying breeding birds, labour, fencing, construction of housing if necessary, feed, transport costs, storage and medical expenses.

Do your research on how much people will be prepared to pay per kilo, so you

can get some idea of the possible profit.

Also find out how prospective buyers expect the birds to be presented ~ does that mean you will need to slaughter and dress them on your plot? Is there a poultry abattoir in your area, will they slaughter turkeys and what do they charge?

Determine what breed of turkey best suits your smallholding. There are

different breeds of turkey and each of them has their own particular advantages. There are some turkeys that are more heat tolerant than others, whereas there are turkeys that produce more eggs, are more fertile and hatch easier.

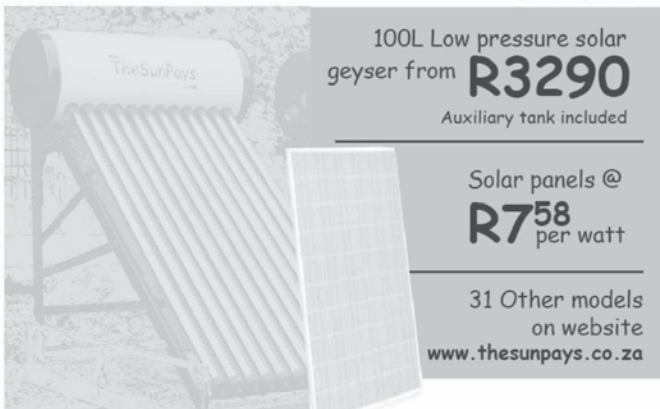
SA poultry clubs list the following breeds as being available locally: American Mammoth Bronze, Beltsville

Continued on page 33



Turkeys free ranging and foraging

WWW
TheSunPays
CO. ZA



100L Low pressure solar geyser from **R3290**

Auxiliary tank included

Solar panels @
R7⁵⁸
per watt

31 Other models
on website
www.thesunpays.co.za

082515 1655 / 012 734 0915

All Prices include Vat/ Free delivery 100km from Cullinan/
Full prices and Specs on Website

TRACTOR MECH

Restoration of New & Old Tractors
Vaaljapie Specialist
For all:
• Sales
• Spares
• Rebuilds
• Service & Repairs
of your:
• Tractors
• Slashers
• Implements
• Stationary Motors

Vaaljapie SPARES in stock
JOHAN 072 576 2392
MARTINA 072 861 6980
403 Bakenkloof Street Pretoria North 0182

N3 Animal Feeds

53 Magagula Heights
Vlakplaas, Vosloorus

Tel 082 345 1946
email n3meatmarket@gmail.com

Transport available on the East Rand
(small or large quantities)

ROSSGRO

ROSSGRO Broiler Feed

Starter R300 for 50 kg

Grower R287 for 50kg

Finisher R277 for 50kg

ROSSGRO Layer Feed

104 mash R255 for 50kg

105 mash R260 for 50kg

For service and advice call Ann Coetzee
(16 years of broiler production experience)

1.2m Eragrostis & Teff bales
well fertilised a-grade



Delivery

for small and large quantities

8 Ton flatbed truck for hire

For best bale prices call Daniel
083 415 8968



RIPPLE CREEK

NURSERY & ORGANICS

Weed Free Organic Compost
Lawn Dressing • Garden Soil
Potting Soil • Kikuyu Instant Lawn
Veg & Flower Seedlings, Trees, Fruit Trees, Shrubs, Roses, etc.

TREE SALE

Buy 10 trees get 2 free! + compost & planting fertilizer

20% discount on selected trees

Special:

Compost/Lawndressing Bags: Buy 10 get 1 FREE!

Open - Sunday to Friday / Closed - Saturday

Tel: 011 965 1777 or 082 875 9507
78 Elm Road, Benoni Agricultural Holdings



Cleaning Products for your Home

A wide variety of household products, from:

- Dishwashing liquid to wash & wax for cars
- Kills odours in septic tanks
- Feeds septic tanks & soakaways with enzymes
- Septic tank friendly
- Cost-effective



*Free Delivery in
Pretoria & JHB*



Tel: 014 736 3463
014 736 2279

e-mail: info@scarabsa.co.za
Web: www.scarabsa.co.za



Environmentally friendly and bio-degradable



Wastewater Treatment Systems

- Does your septic tank smell?
- Has your French drain failed? ... Again?
- Are you polluting the neighbour's borehole water?
- Are you compliant with the National Water Act?
- Would you really like to reuse your water?

Each Scarab system...

- Is designed to comply with the National Water Act
- Is simple to install, maintain and operate
- requires no chemicals (Ozone optional)
- uses minimal power
- Is almost maintenance free
- produces clear and odourless water
- Is modular to suit new loadings
- Is sized from the single house to large estate



The Scarab system is:

- Featured in the Dept of Water Affairs best practices guideline policy
- Listed as a top 100 SA company for its technology in 2004, 2005 and 2006, and for receiving the Bio2Biz award in 2006.
- A preferred supplier to the Dept of Health - Rural Clinics (KZN)
- Featured on SABC3 Business Update



Johan 082 535 4576

e-mail: johan@scarabsa.co.za

*Now in Bela Bela
(Warmbaths)*

Tel: 014 736 3463 Fax: 086 763 8267 Cell: 082 441 9549

e-mail: scarabwater@gmail.com

Web: www.scarabsa.co.za

Have you hugged your water today?

From page 31

White, Blue Turkey, Bourbon Red Turkey, British White, Buff Turkey, Royal Palm, Narragansett, Norfolk Black, Slate and White Holland. Turkey breed names often refer to their plumage.

Examine your smallholding as a turkey producing facility. Is the temperature right for your breed of turkey? Do you have the right facilities or do you need to construct? Is there a source of potable water nearby? Can you run a free-range operation? Is there sufficient plant material or do you have to plant more? Were there previous turkeys or animal epidemics near the area?

It is suggested that an acre of fenced land is sufficient for around 200 to 250 adult free-range turkeys. However, turkeys do require housing at night to protect them from predators. Despite their size, turkeys are not as hardy as some other poultry species and will appreciate shelter, away from extreme weather. In terms of municipal by-laws, turkeys fall under poultry legislation. Most municipalities state that one must have 0,5 m² for each mature turkey accommodated in the poultry house. Plan your turkey house so that you can keep it dry and clean and ensure sufficient flow of fresh air inside the house, as ventilation is very important.

Turkeys have the instinct to perch at night, so some stout poles placed in the housing, about 1m off the ground would be useful for the adult birds. However, little poults will try to perch on whatever is higher than them but perching too early, especially on a narrow pole, can dent the breast bone, so try to put this off for as long as possible. A bale of straw in the house will keep little poults very happy for a long time, jumping up and perching on

it at night. When almost adult (five - six months old), they can be introduced to a purpose built perch, which they will welcome.

You will need to provide feeding troughs and water dispensers. Turkeys are susceptible to the deadly blackhead disease. Visiting wild birds might be carriers, so it is best to keep the feed and water containers indoors if possible.

If you intend to keep them free-range you will need to

be able to rotate them through different camps.

Perhaps you will allow them some time in a lucerne field, to provide a variety of forage. Don't leave them there for too long though, as lucerne sometimes makes the meat bitter. The best forages are full of legumes and have a good mix of species.

By allowing your turkeys to forage they will eat as much as 25% less commercial feed than if you didn't allow them to forage. Just make sure that

if they are out in pasture they also have some shade to get out of the mid-day sun.

If you pasture your turkeys these fields will need to rest over the winter, as well as using additional fields for rotation to minimise disease and damage to the pasture. During the season you may also need to reseed to keep your pastures in top condition.

Even if you do pasture them they will still need additional

Continued on page 35



Manufacturers of Water, Chemical, Transport, Septic Tanks and Silos

<p>Cape Sales: Tel: +27 (0)22 433 2342/2937 Fax: +27 (0)22 433 4724 E-mail: rotocape@mweb.co.za</p>	<p>Gauteng Sales: Tel: +27 (0)12 376 1070/2 Cell: +27 (0)71 689 4216 Fax: +27 (0)86 297 2504 E-mail: roto@mweb.co.za PO Box 1210, Ifafi 0260</p>	<p>KZN Sales: Tel: +27 (0)39 685 7243 Fax: +27 (0)39 685 0292 E-mail: kznsales@rototank.co.za</p>
---------------------------------------------------------------------------------------------------------------------------------------------------	--------------------------------------------------------------------------------------------------------------------------------------------------------------------------------------------------------------------------	-------------------------------------------------------------------------------------------------------------------------------------------------

www.rototank.co.za **086 000 TANK (8265)**



Vertical tanks from 500€ to 40 000€

Horizontal tanks from 500€ to 8 000€

Modular plastic silos ranging from 8m³ to 24m³

Plastic septic tanks ranging from 600€ to 12 500€ (2-55 persons)

Trade in your old tank for a NEW one!

Free delivery

WINNING FEATURES

- Delivery time 7 to 10 working days
- Light, easy to install ~ no cranes required
- Rust and dent resistant, maintenance free
- Resistant to most hazardous chemicals
- Choice of various colours
- Tank stands available: 1,5m, 3m, 4,5m, 6m, 9m & 12m
- Warranty



MESH FOR BIRDS



226 High Road, Pomona, Kempton Park
Inside the premises of Birds and Pets For Africa
Open Monday to Sunday from 8:00 am to 5:00pm
Contact us on: www.meshforbirds.co.za
Barry: 083 679 1317 or aviary@mweb.co.za
Adelle: 083 427 7101 or sales@meshforbirds.co.za

Mesh: Galvanised After Welding Sold in 30m rolls or p/m

Block Size	Wire dia.	915mm	1220mm	1830mm
6.4mm x 6.4mm	0.7mm	✓	✓	✓
9.6mm x 9.6mm	0.9mm	✓	✓	✓
13mm x 13mm	1.0mm	✓	✓	✓
13mm x 13mm	1.6mm	✓	✓	✓
13mm x 25mm	1.0mm	✓	✓	✓
13mm x 25mm	1.25mm	✓	✓	✓
13mm x 25mm	1.5mm	✓	✓	✓
13mm x 25mm	1.6mm	✓	✓	✓
13mm x 25mm	2.0mm	✓	✓	✓
25mm x 25mm	1.0mm	✓	✓	✓
25mm x 25mm	1.5mm	✓	✓	✓
25mm x 25mm	1.6mm	✓	✓	✓
25mm x 25mm	2.0mm	✓	✓	✓
25mm x 25mm	2.5mm	✓	✓	✓
25mm x 25mm	3.0mm	✓	✓	✓
25mm x 50mm	1.5mm	✓	✓	✓
25mm x 50mm	1.6mm	✓	✓	✓
25mm x 50mm	2.0mm	✓	✓	✓



Mesh: Galvanised Before Welding Sold in 30m rolls or p/m

Block Size	Wire dia.	915mm	1220mm	1830mm
25mm x 25mm	2.5mm	✓	✓	✓
25mm x 50mm	2.5mm	✓	✓	✓
25mm x 50mm	3.0mm	✓	✓	✓
50mm x 50mm	1.6mm	✓	✓	✓
50mm x 50mm	2.0mm	✓	✓	✓
50mm x 50mm	2.5mm	✓	✓	✓
50mm x 50mm	3.0mm	✓	✓	✓
50mm x 100mm	2.0mm	✓	✓	✓
50mm x 100mm	2.5mm	✓	✓	✓
100mm x 100mm	2.0mm	✓	✓	✓
100mm x 100mm	2.5mm	✓	✓	✓

Hexagonal Mesh (Oogies draad) 50m rolls/p/m

Hole Size	Wire dia.	915mm	1220mm	1830mm
13mm hole	0.7mm	✓	✓	✓
25mm hole	0.9mm	✓	✓	✓
75mm hole	1.8mm	✓	✓	✓
90mm hole	1.8mm	✓	✓	✓

A16, A18, A20 Hog Rings and Pliers



Light Duty J-Clips and Pliers



Heavy Duty J-Clips and Pliers



Bowls, Coop Cups and Swivel Feeders



11.5cm
14.0cm
16.5cm
21.0cm



7.5cm
9.5cm
12.5cm
15.0cm



7.5cm
9.5cm
12.5cm
15.0cm



Double Bowl & Triple Bowl
11cm, 14cm, 16cm



Panels & Gates



Trap Cages Various Sizes for Jackal, Meerkat, Leopard etc



Aviaries and Cages (Round, Square, Hexagon, Arch /Pitch roof etc)



**We build custom aviaries
to your specification**

From page 371

concentrates. Turkeys require more protein in their regular feed than chickens. For proper growth and better production, poults need about 28% protein in their feed and adult birds need about 20% protein in their regular feed.

Locally, you are not likely to find special turkey feed, so you will have to feed general poultry grower pellets, which

have the highest protein content of available poultry feeds, and then move on to layer pellets. You can also feed anything you have that is spare from the vegetable garden. It is not recommended to feed broiler mash, as the feed is often medicated.

Turkeys are very efficient at converting feed to mass. When keeping turkeys be mindful that they also need a

constant supply of grit. Like chickens, they need the grit to help break down the food in their gizzard. Poults, even from two days old, should be given grit as part of their diet. When raising turkeys the first three weeks are the most critical. Poults are very fragile for the first three weeks and they must be kept in a brooder. The purpose of the brooder is to imitate the warm, safe conditions

beneath a mother hen. It must be hot and humid. They need regular checks, as poults are especially prone to flip on to their backs and suffocate themselves.

To get them started correctly, don't cut corners on feed. Turkeys need at least 26% protein for at least the first month, before levelling down to 21%, and then to 20% as adults.

Along with quality

feeding, ensure availability of sufficient amounts of clean and fresh water.

A hundred adult turkeys will need about 65 litres of water daily. Automatic poultry waterers and feeders are good choices for feeding and watering turkeys. Clean the feeder and waterer on a regular basis.

Disease and other health problems are also common in turkeys like other poultry. Don't raise turkeys and chickens together, as chickens are carriers of diseases that might be fatal for turkeys.



Turkeys in indoor housing



HIGHVELD HONEY FARMS

PROTECT OUR BEES

Visit our farm in Rynfield to get your honey at farm prices. Bring your own containers and we will fill them up - pay ONLY for the HONEY

Plot 185 Uys St, Rynfield AH, Benoni
Tel 011 849-1990
Weekdays 07:00-17:00
Saturdays: 07:00-13:00

STEWARTS & LLOYDS PALISADE

The Largest Manufacturer of Steel Palisade Fencing in the Southern Hemisphere

Cold formed palisade panels

40 x 40 section
16 palings per panel

3 000mm wide x 1 800mm high **R680.00**
3 000mm wide x 2 000mm high **R733.00**

Cold formed palisade palings

40mm x 40mm	30mm x 30mm
1 200mm R25.53	1 200mm R17.11
1 500mm R27.00	1 500mm R21.39
1 800mm R32.40	1 800mm R25.66
2 000mm R36.00	2 000mm R28.52

3 or 7 spike available

CF PALISADE GATES

Includes wheels & tracks

40x40 GATES, 1,8m R858/m
40x40 GATES, 2,0m R891/m
30x30 GATES, 1,8m R715/m
30x30 GATES, 2,0m R770/m

Cold formed palisade panels

30 x 30 section
19 palings per panel

3 000mm wide x 1 800mm high **R603.00**
3 000mm wide x 2 000mm high **R644.00**

Palings and panels
manufactured
from 500mm to 3 000mm height

Hot rolled angle palisade panels

	25 x 25 x 2	30 x 30 x 2	40 x 40 x 2
1800mm	R712.00	R824.00	R945.00
2000mm	R766.00	R865.00	R1028.00

76 x 76 Square Posts
2 400mm R155.00
3 000mm R206.00
Includes domed cap

Alrode 011 900 4270
Boksburg 011 917 0778
Booyens 011 496 3000
eMalaheni 013 692 8425
Pretoria 012 800 9600
Robertville 011 672 1100

Only A-Grade Material Used
We Manufacture Various Lengths
Free Delivery • All Prices include VAT • E&OE

Springs 011 811 5111
Vanderbijlpark 016 981 2038
Vereeniging 016 421 3260
Wadeville 011 824 1800
Wynberg 011 321 7900

www.mnani.co.za
www.tuffy-agri.co.za
gert@mnani.co.za
sales@mnani.co.za
accounts@mnani.co.za

8 THIRD STREET , DELMAS



TEL 013 665 3054
TEL 013 665 2800
IMPLEMENT VERKOPE
076 560 9856
ONDERDELE VERKOPE
083 393 1701

TUFFY HAYCUTTERS



SIZES AVAILABLE 1.2m, 1.5m, 1.8m
CUTTING WIDTH
FOR HAYCUTTING

TWIN ROTOR



AVAILABLE IN
2,0m, 2,4m, 3,0m AND 3,5m

SICKLE BAR MOWERS



AVAILABLE IN 2,1m AND 2,7m
FOR LUCERNE & TEFF

TUFFY SLASHER



SIZES FROM 800mm, 1m, 1.2m, 1.5m, 1.8m
CUTTING WIDTH
GENERAL CUTTING

BALE LOADERS



CAN LIFT 3,0-3,5m FOR STACKING AND
MOVING HAY BALES

TUFFY MINI ROUND BALER



TMRB0850, 0870, 1070 ROUND BALER
FOR MAKING HAY BALES OF ALL TYPES OF GRASS



ALL IMPLEMENT REPLACEMENT PARTS ANY MAKE OR MODEL

DISC BEARINGS, DISC SHAFTS,
DISC SPACERS, RIPPER TINES,
CULTIVATOR TINES, BOLTS &
NUTS, PTO'S, UNIVERSALS,
YOKES, SPROCKETS,
CHAIN, IMPLEMENT PINS, TOP
LINKS

MOWER SPARE PARTS

BLADES, BOLTS, BUSHES.

COME VISIT OUR NEW WEBSITE
www.tuffy-agri.co.za

How to manage small stock parasites

Owners of sheep and goats on plots need to monitor their livestock for internal parasites. In years past the advice from fellow smallholders was to dose all the sheep or goats regularly. However, South Africa has the dubious reputation for having the greatest occurrence of multiple anthelmintic resistance and our animal scientists have had to develop and implement more sustainable and holistic methods of managing parasites in sheep.

But first let's have some clarity on the terms. A parasite is a plant or animal that lives on or in another, usually larger, host organism in a way that harms or is of no advantage to the host.

In the case of sheep and goats internal parasites include bots and worms, in the form of flukes, nematodes and bilharzia or flatworms, as well as wireworm, brown stomachworm, bankruptworm, long-necked bankruptworm, hookworm, nodular worm, milk tapeworm, whipworm and large-mouthed bowelworm. Another word used for them is helminth.

Anthelmintics are antiparasitic drugs used to rid the animal of the worms etc.

Anthelmintic resistance happens when the parasites develop immunity to the drugs and are no longer affected by them.

In an attempt to slow down this resistance veterinarians suggest that we adopt the principle of targeted selective treatment (TST). So instead of a blanket treatment of the whole flock, we should only treat those that show symptoms of a parasite infestation.

Drs Bath and van Wyk, from the Small Stock Health &

Production Dept of the University of Pretoria have developed a quick way of assessing the condition of a sheep or goat, which they have called the Five Point Parasite Check.

Catch your sheep and restrain it. Then examine:

1 ~ The nose, for nasal discharge caused by nasal bots,

2 ~ The eyelids, for paling caused by anaemia, as a result of haematophagous (blood-sucking) worms,

3 ~ Under the head, for swelling below the jaw, commonly called bottle jaw, which is brought about by haematophagous worms and conical fluke,

4 ~ The back, in order to assess body condition score,

which is affected by worms, 5 ~ Under the tail, for faecal fouling or dag score due to worms which cause diarrhoea (scouring).

This check is practical, cheap and quick.

Not all animals are equal ~ the way they handle parasitic infestations differs. Careful observation of your animals will reveal which have a

Continued on page 38

"Serving the public since 1932"

TURFMASTER (PTY) LTD

LAWNCARE PRODUCTS

EAST RAND HEAD OFFICE:
TEL 011 730 3400
 No.1 Third Avenue,
 Vorsterkroon, Nigel
 Website: www.turfmaster.co.za
 Email: info@turfmaster.co.za

TANAKA *"The Power is in your Hands"*

Trimmers & Brush Cutters

- **26 cc Bent Shaft**
0.85 kW/1.14 hp/7500 rpm
- **32.7 cc Straight Shaft**
1.00 kW/1.33 hp/7500 rpm
- **51.7 cc Straight Shaft**
1.50 kW/2.00 hp/6500 rpm
- **63.3 cc Straight Shaft**
2.4 kW/2.95 hp/7500 rpm

Pole Pruner, 25.4 cc
 2.5 – 4 m Shaft Extension
 12" Guide Bar
 0.85 kW/7500 rpm

Hedge Trimmer, 25.4 cc
 0.75/1 hp/7500
 Bar Length: 600 mm
 Dual Sided Scissors

Chainsaws



- **51.2 cc 2.4 kW/2800 rpm**
Bar Length: 510 mm (20")
- **72.2 cc 3.9 kW**
Bar Length: 610 mm (24")

Floor Sweeper

- Operational Width: 80 cm
- 2 Side Rotary Brushes
- Container Capacity: 40 L

Earth Augers

Double Handle 63.3 cc
 2.2 kW/2.95 hp
 7500 rpm

Optional extras:
Drill Bits
 • 100 mm,
 • 150 mm,
 • 200 mm,
 • 250 mm

Back-pack Blowers

- **51.7 cc 1.75 kW/2.4 hp**
- **63.3 cc 2.6 kW/3.5 hp**
- **82.4 cc 4.2 kW/5.6 hp**

18" Push Mower
 480 mm mower
 With steel chassis

121.5 cc
 Tanaka 550
 2-Stroke
 Engine

Electric Mower
 480 mm Electric
 mower with
 steel chassis

2200 Watt
 Electric
 Motor

Shredder
163 cc
 Power Pro
 R183
 4-stroke
 Engine,
 3000 rpm

Suitable to chip:
 Maize, Wood,
 Leaves, etc

Also available: Hand held blowers, mist blowers, engines, water pumps, etc

Branches:

EAST RAND, NIGEL 011 730 3400
CENTURION 012 653 8342
NELSPRUIT 064 420 4482
DURBAN 031 701 8233
PORT ELIZABETH 041 581 8443
ROODEPOORT 076 921 5469
BELLVILLE 021 945 4106

TANAKA Products
 also available from:
**OVER 500 DEALERS
 NATIONWIDE**
**CALL US FOR YOUR
 NEAREST DEALER!**

Available from: **Preferred suppliers for:**

ESSENTIAL
 DIY - BUILDING - INDUSTRIAL
 HARDWARE

Selected Essential
 Hardware shops

OBARD

Selected Branches
 Nationwide

TRANSLUCENT

POLYCARBONATE SHEETING

Flat, Profiled & Multi-wall

Polycarbonate Roof Sheetting

At Affordable Prices
SAVE ON ELECTRICITY
due to natural lighting



Now also available: Mythos Greenhouses
248 x 185 x 216cm



DIY Skytiles Translucent
Lightweight
UV Protected

We also supply:
Turbine ventilators
Roof fasteners
Butyl sealants
DIY Skytiles

MASBIZ TRADING CC

Tel: 011 894 2873 / 079 882 2515
carolann@masbiz.co.za
192 Dr Vosloo Road, Bartlett, Boksburg
www.masbiz.co.za

LIVESTOCK

From page 37

greater resistance to parasites. Those who demonstrate greater vulnerability to infestations should not be part of your breeding programmes. As Bath states, "The motto must be 'Stop Selecting Sissy Sheep!'"

Good nutrition, especially protein and trace elements, are needed to support the sheep's resistance, resilience and immunity. But one also needs to ensure enough exposure to worms for immunity to develop.

Quarantine procedures must be in place when animals are brought in from elsewhere so that worms are not introduced to the farm at the same time. As part of a "sustainable and holistic integrated parasite management (shIPM)", you will need to lay in supplies of medications for each of the parasites that you are able to identify. Ask your vet for

advice on what is particularly common in your area.

They most often come in the form of a drench, which is a liquid form of medicine that you administer through the mouth of the animal. Often one medicine will target more than one parasite, particularly the worms. Read the label, follow instructions and check the spectrum covered.

Common parasite remedies available in Gauteng have one or more of four active ingredients. The names are long and to make choosing easier they have each been assigned a number, which is displayed in the top right hand corner of the bottle label: 1 = Ivermectin, a macrocyclic lactone; 2 = Albendazole; 3 = Imidothiazole; 4 = Salicylimide.

Some drenches have more than one active ingredient, denoted by two numbers in

Continued on page 39

Secure Self Storage

CONTAINER

units

6m and 12m Containers available

6m container ~ R480pm

12m container ~ R850pm

*plus R150 once-off refundable deposit

Bring your own padlock

Cheapest on the East Rand!!

Maryna 082 744 4191

Hugo 082 561 0443

e-mail u-go@vodamail.co.za

www.4ustorage.net

Physical address: 52 Ystervark Street, Petit.



Fisher
Operator Training

We Provide Accredited Training & Certificates On The Following:



(Registered with CETA & TETA)

TLB

Roller

Bobcat

Bulldozer

Excavator

Front End Loader

Grader

Mobile Crane

Dump Truck

Forklift

Plant Hire also available



Ryno: 082 307 6541

Hugo: 082 561 0443

email: ryno@fishertraining.co.za

www.fishertraining.co.za

52 Ystervark St, Petit, Gauteng

LIVESTOCK

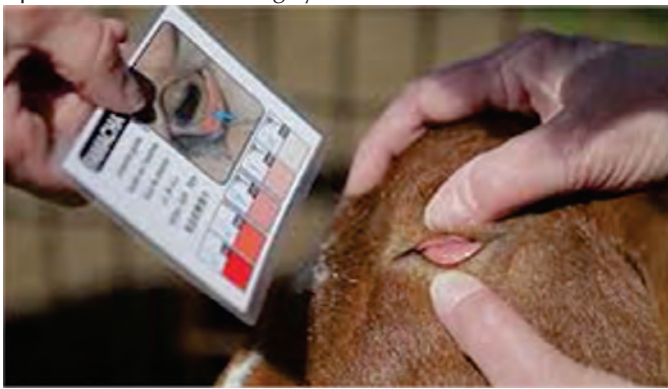
From page 38

the top right corner, eg 3+4. Good practice is to dose alternately with the different active ingredients. You can keep track of what you should use by working according to the month. Thus, if you have to dose a sheep in January, use a dose which contains 1, in February one which contains 2 and so on. In May use a combination, say 3 and 4, and in June go back to 1. Target the most vulnerable (lambs and lactating or heavily pregnant ewes) for special attention. It is largely

these groups that will need more treatments and greater vigilance. It is also practical to make some form of temporary marking on the sheep to indicate that it has been dosed. Animal marking sticks are available in different colours and an animal-friendly spray marking paint can also be ordered. Holistic parasite management must also include how you manage your land. In order to decrease the parasite load in the pasture, which will be in the form of eggs in the faeces of the animals, reduce

the length of stay of the animals in any one pasture. Short-cropped pastures may indicate high and efficient utilisation, but they also carry the increasing risk of high levels of infection by helminth larvae. Also allow enough time for regrowth to take place. If this is not possible, try to reduce the grazing pressure by placing fewer sheep there. Increase the time of absence from a pasture, especially at danger times. The period of

paddock rest is crucial in reducing a build-up of infective larvae and thus the challenge to grazing sheep or goats. If possible alternate with non-susceptible grazing species, eg, horses, cattle and ostriches. Avoid worm "hot spots" such as small grassed pens and leaking water troughs. Mend leaking water troughs, fence off marshy areas, and remove grass from all holding and security pens.



Checking for anaemia by examining the eye tissue against a colour chart

COUNTRY STYLE FENCING TREATED POST & RAIL FENCING

- Push-fit
- No nails or screws
- No Maintenance
- Very quick
- Very strong
- CCA TREATED

GUM POLES

For Cattle, Horses & Gardens

POLE & TIMBER SUPPLIERS

TEL 011 640 7975 ~ 072 113-4637

www.poleandtimber.co.za



WATER PLANT
turning your garden into a paradise
since 1982

Hartbeespoort: R512, near Pecanwood

Tel 0861 987 654

Cell 083 407 7589

e-mail harties@waterplant.co.za

NOW Open on Sundays 9:00 - 15:00

SEE THE FULL RANGE
ON OUR WEBSITE



ponds & pumps

irrigation



KOI FILTER SYSTEMS
6000L Pond
12 000L Pond
24 000L Pond



Hunter
The Irrigation Innovators

RAIN BIRD



www.waterplant.co.za



ANIMAL FEED, FODDER & BEDDING SPECIALISTS

MILMAC IS YOUR **ONE STOP** ANIMAL & PET SHOP



DOG FOOD SPECIALS!

25kg Montego – R358 incl.
40kg Jock – R548.22 incl.
20kg Jock – R285 incl.

The **ONLY** Shop Your Animals Need



MARCH **CASH & COLLECT SPECIALS**

Milmac 12% Cubes – R224

Milmac 12% Meal – R228

Alzu 12% Maize Free Meal – R232

Equus Train and Leisure 40kg – R226

Epel 40kg 12% Rider Cubes (V3670) – R234

Epel 40kg 12% Super Rider Meal (V18409) – R234

Epel 40kg Cool Cubes (V17734) – R225

**GRASS
SPECIALS!**
Call Helen Now!
072 715 1271

Spurwing Maintenance 40kg – R257

Spurwing Paddock Plus 40kg – R271

Royal Maize Free Meal/Cubes – R246

Molatek Molasses Meal 40kg – R130,50

Molatek Mater 20 – R156,70

Molatek Multiblock – R160,46

HOLIDAY
Tues 21st Mar

Prices incl. VAT • Only while stocks last • Prices subject to change without notice.

Email orders to: helen@milmac.co.za • sales@milmac.co.za • Fax: 086 516 1147

Emergency: 072 715 1271 • 082 809 8080 • 078 803 4027 • Find us at 257 Cedar Road, Chartwell

Call: 086 100 1182 or visit www.milmac.co.za



FIRE WATCH

Plant indigenous to fireproof your smallholding

Gauteng's fire season is still a couple of months distant, but now is nonetheless a good time to examine your property, particularly your trees, to see whether you can do anything more to protect your home from fires.

The aim of most smallholders is to encourage trees to grow on their land for shade, wood and landscaping. However, there are some which will do the opposite from protecting your property when they catch fire.

It is well known that conifers such as pine and other fir trees, cedars, cypresses, spruces and yews are highly flammable because of their resin. Even conifers that are indigenous, such as the Mountain Cypress, are highly combustible.

Blugums and other eucalypts are also most susceptible to fire. The windblown embers from pines and gum trees can travel a considerable distance and start spot fires.

Another incendiary alien invasive tree is *Solanum*

mauritianum or bugweed. This is a Category 1 declared weed, which requires that it should be controlled immediately. Large plants need to be cut at ground level and any re-growth treated with a suitable herbicide.

Although not a tree, pampas grass is also likely to burn quickly and increase the intensity of a blaze. It too is a Category 1 weed. There are other ornamental grasses that will be equally problematic. Not all invasive alien trees burn quickly - *Acacia mearnsii* (Black Wattle), *A dealbata* (Silver Wattle) and *Salix babylonica* (Weeping Willow) are some of the more threatening of the invasive trees but they are well adapted to fire.

With the wattles there is the further complication in that they produce an abundance of seeds that accumulate in the soil. These seeds are stimulated to germinate en masse by fires, which means that burning can dramatically increase the number of plants.

Continued on page 42

WATER IS OUR BUSINESS

We carry the widest range of pumps and fittings for all your requirements

- Borehole Testing & Certificates
- Dewatering of Dams & Pools
- Installations of Borehole pumps & Garden Irrigation
- (Phone for Quotation)
- We now stock **POOL CHEMICALS!**

Borehole testing up to 100 000ℓ per hour. Borehole inspections can be done with latest camera technology.

New Tanks now in stock!



Call us now for a quote on your GARDEN IRRIGATION

We also Repair!!



011 660 7824

TECHNOLOGIES

manti

anna@amantitech.co.za
www.amanti.co.za

67 Commissioner Street, Krugersdorp
(opposite Action Ford)

GPS 26°06'07"S, 27°46'20"E

Consultations on ALL your water problems

**ANC NEW LAND LAW:
50% OF THE FARM MUST GO TO THE WORKERS...**

Ou Petrus,
Sê nou mooi vir die Oubaas,
Watter gedeelte van die R3 miljoen rand se skuld op
die Plaas wil jy nou eintlik hê??



"Serving the public since 1932" Valid till end March '17 / while stocks last

TURFMASTER (PTY) LTD

LAWNCARE PRODUCTS

TEL 011 730 3400

No.1 Third Avenue, Vorsterkroon, Nigel

Website: www.turfmaster.co.za

Email: info@turfmaster.co.za

Valid to end Feb '17 or while stock lasts.

Centurion: 012 653 8342

Durban: 031 701 8233

Nelspruit: 064 420 4482

P.E.: 041 581 8443

Roodepoort: 076 921 5469

Bellville: 021 945 4106

Still the **BEST** warranty in the Industry!



KUDU
Industrial Heavy Duty Mower
With: **POWER PRO 15hp Engine**
R16,500 Excl. VAT
Contact us for other Kudu engine prices
KOHLER **HONDA ENGINES**
Used by most Municipalities



MTD Ride-On Lawn Tractor **42"**
SMART RG 145 42" Cutting Width,
Briggs & Stratton PB, 1 Cylinder,
9.1 kW, 500 cc, E-Starter
Transmatic, 6-speed
R30,500 Excl. VAT
R5,500 Excl. VAT
Twin Bag Grass Catcher
for MTD Ride-On Mower



Cub Cadet
Ride-On Tractors
38" 14 hp
420 cc Cub Cadet
OHV engine
R23,500 Excl. VAT
38" 14 hp, 420 cc
Cub Cadet OHV engine
R26,500 Excl. VAT



SCAG POWER EQUIPMENT
Some of Turfmaster's Happy Scag Clients:
Municipalities:
Ekurhuleni: 125 Units
Durban: 50 Units
Richards Bay: 30 Units
Other Municipalities: 80 Units
Correctional Services: 40 Units
Contractors: 35 Units
LIBERTY Z
Zero-Turn Mower
48" Cutter Deck,
18 hp, Kawasaki 7000 eng.
R82,000 Excl. VAT

Prices per unit, Excl. Delivery & VAT. Valid for COD customers only.
While stock lasts. Models available may differ from illustrations. E&EO.

FIRE WATCH



Fire retardant ... Ice plant
From page 41

According to Brian van Wilgen, professor in the Centre for Invasion Biology at Stellenbosch University, there is some good news concerning wattles. The introduction of biological control to reduce the seed output of Australian wattles is having some effect. The introduction of a suite of seed-feeding weevils and gall-forming flies and wasps (which prevent seed production by inducing the formation of galls instead of seed pods), has significantly reduced the seed output of many Australian wattle species. In the meantime though if you have any species of wattle mentioned above now is the time to cut them down.

If you decide to cut down trees, be sure to remove whatever you have cut from the site so that there are no piles of dead material lying around.

Then you are faced with the question of what to plant as replacement. Fire-retardant trees can offer protection from fire in three ways. Firstly, by acting as a shield against the immense radiant heat generated by an approaching fire, so that the house is protected from the intense temperatures that can shatter windows and melt materials. Secondly a large canopied tree or a strategically placed hedge act to trap the burning material carried in the intense fire winds. This reduces the amount of flaming matter that can reach and ignite the

building itself. Finally the stored moisture in the leaves acts as all water does ~ it suppresses the fire's energy. Many times even a single tree has saved a house or shed.

Plants with broad fleshy leaves and/or a high salt content burn much less readily than those with fine

hard leaves.

Bear these points in mind when looking at the trees around your boundary and the trees that surround your garden. The number of tall trees grown should be in scale to the property. Always plant with their mature height and width in mind. Well-maintained evergreen shrubs and trees planted on boundaries can reduce fire intensity and wind speed, and deflect and filter embers.

If trees are spaced so that their canopies aren't touching, this will help reduce fire spreading from tree to tree. Trees with smooth trunks are less flammable.

Remove branches that could cause power line short circuits and check electrical installations regularly.

Pay special attention to fuel load management in down-slope areas and construct firebreaks adjacent to the property. Slash long grass and undergrowth and remove dead and dry branches from trees.

Cut back or remove trees that are overhanging or touching a building.

Continued on page 43



Fire retardant ... tree fuschia

FIRE WATCH

From page 42

Keep ground clear of leaf and bark litter. Studies have shown that leaf and twig litter, especially twigs of pencil thickness, play an important role in initiating the combustion of buildings, often after the main fire front has passed through.

Although no plant is fireproof, many plants have features that minimise the extent to which they contribute to the spread of veld fires.

Well-watered plants will not burn as readily as those that are not well maintained.

Landscaping with fire retardant plants or plants that re-sprout after a fire is part of an overall fire defence plan. Choose from a range of firewise plants, many of which are indigenous.

Plants with fleshy, moisture-retaining leaves and plants with underground roots and tubers can survive fires. Citrus, coprosma, ice plants, sedum, echeveria and kalanchoe, with their high moisture content, burn more slowly. The leaves, stems or roots of succulents have been adapted to store nutrients and water. Aloes have a low flammability because of their fleshy leaves. Old aloe leaves should be removed to lessen the risk of fire.

Three trailing plants that are useful for covering soil are *Othonna capensis* with tiny yellow flowers, *Convolvulus*

sabatius and *Aptenia cordifolia* with fleshy bright green leaves and small red flowers.

Some plants grow in such a way that they cover the soil. *Agapanthus* do this well, and because of their strong root system, help prevent erosion by binding soil. Other bulbs to use are *Tulbaghia* and *watsonia*.

According to biodiversity and plant expert Kay Montgomery, *Bergenia cordifolia* is a much under-rated plant. It has large evergreen, leathery leaves that hug the ground and attractive pink flowers.

For hedge plant choose from *Krantz aloe*, tick berry (*Chrysanthemoides*

monilifera), dune crowberry (*Searsia crenata*) and camphor bush (*Tarchonanthus camphoratus*).

A useful tree for the perimeter is the *Halleria lucida* (tree fuchsia) which is quick growing with pretty flowers and glossy bright leaves. You can also investigate Cape holly (*Ilex mitis*), rooiels (*Cunonia capensis*) if you have a shady spot near water and Cape beech (*Rapanea melanophloeos*).



Cape holly (*Ilex mitis*)



facebook.com/gautengsmallholder

WHOLESALE PRICES DIRECT TO THE PUBLIC

• DIAMOND MESH

• WELDED MESH

• PLAIN WIRE

• BARBED WIRE

• RAZOR WIRE



• POSTS

• STAYS

• DROPPERS

• Y-STANDARDS

• GATES

"WE ARE WIRED"

TEL: 0861 11 24 53

TEFF & ERAGROSTIS BALES

New Season - Green - Fresh A-GRADE AVAILABLE

WELL FERTILISED & WEED FREE

10 bales minimum

We Deliver
(bulk deliveries only)

FERDI 082 253 6115
JACQUES 060 621 4876

Easyhatch Incubators

Manufacturer of fully automatic industrial and hobby Incubators



Rugare Bird Farm

Breeders of

- Exotic chickens
- Exotic ducks and swans



www.easyhatch.co.za

info@easyhatch.co.za

Call us on 011 051 9386 / 079 893 6383

GPS: S26° 41' 12.3" E27° 40' 26.2" (Vanderbijlpark)



The book that every smallholder needs

Contents will include:

- Infrastructure (fencing, septic tanks, irrigation etc)
- Keeping Livestock
- Crop Production
- Pasture Management
- Farm & Garden Machinery
- Legislation applicable to smallholders
- and much more!



Order your copy TODAY!!

Only R180-00 VAT and p&p incl*

* Discounts apply for bulk orders of ten or more copies.
PUBLICATION DATE: END FEBRUARY 2014

**200-plus pages
PACKED with
information!!**

(Complete & post to Bowford Publications, PO Box 14648, Bredell 1623 with your payment)
Upon publication in February 2014 please send me copies of the Smallholder's Companion.
My payment for R (R180 x no of copies required) is enclosed.

Name:

Postal Address:

Tel/Cel number:

Payments can be made via cheque or postal order made out to **BOWFORD PUBLICATIONS**,
or phone 076 176 7392 or email smallholderscompanion@mweb.co.za for EFT details.
A receipted Tax Invoice will be posted to you as acknowledgment of your order.

Wet weather brings on cattle ailments

With outbreaks of Lumpy Skin Disease and Three-day Stiffsickness being picked up by veterinarians among cattle herds across the Highveld, cattle owners have been advised not to resort to "boer-maak-n-plan" remedies, but to place reliance on registered drugs and vaccines to combat the diseases. Excellent rainfall and relatively warm temperatures are what bring out the carriers of these diseases, and prevention is better than cure. Thus, vaccination of healthy animals, during the course of the year and before any possible outbreak, should form part of every livestock owner's regular regimen. Vaccinating sick animals is useless, say veterinarians. Moreover, treating sick

Home-made remedies are daft, ineffective and dangerous say vets

animals with, for example, bizarre remedies such as injections of Dettol, or acetylsalicylic acid (aspirin, to you) is also useless, and possible dangerous. Antibiotics are used to treat lumpy skin disease, while anti-inflammatory products registered for livestock are used for three-day stiff-sickness. Lumpy skin disease is transmitted by mosquitoes and flies, among others. It was first detected in what was Northern Rhodesia in 1929, but has since spread throughout Africa, and outbreaks have also been reported from, among other countries, Israel and Bulgaria. Transmission can occur by

ingestion of feed and water contaminated with infected saliva. The disease is characterised by painful nodules on the entire body, particularly on the head, neck and udder, between seven and 19 days after the animals are infected by the virus. The nodules can become necrotic (ie the flesh dies off). The disease is sometimes fatal. Three-day stiff-sickness, also called bovine ephemeral fever, is also a viral disease, particularly devastating in the dairy industry. Symptoms include a sharp rise in temperature followed by, among others, loss of appetite, a stiff gait, nasal discharge and salivation,

inflamed joints, and rapid pulse and respiration rates. It is also an insect-transmitted disease.

QUIRKY



Moth repellant, maplotter-style

Valdor Centre, Beyers Naude Drive, Muldersdrift
heronbridgeproduce@gmail.com
011 957 5964
074 421 4802

HERONBRIDGE
Animal Feed & Agri Supply
Lucerne, Teff, Eragrostis and Pine Shavings
Pharmaceuticals • Fertilizers • Fresh Produce

March Specials

- Teff Mini-Round Bales - Superb Quality - R160.00 ea (800mm x 800mm dia, +/- 33kg)
- 5% Discount for all Wash & Repair Services for Horse Blankets

Available here!

AMANZI
Borehole Testing

- Borehole Yield & Constant Discharge Testing
- Borehole Testing SANS 10299
- Water Quality Testing SANS 241
- Borehole Pump Installations

Member of the Borehole Water Association of South Africa

Kevin: 084 538 4600
Email: kevin@rainsford.co.za

Quality Service Throughout Gauteng

ROOF SHEETING

Buy direct from factory

ADVANTAGES:

- Shatterproof, Weather & Hail Resistant
- UV Protected
- Over 70% Light Transmission
- Product is 2,5mm thick
- Domestic & Industrial
- Easy to Install - DIY
- Choice of 4 Colours
- 7 Year Guarantee
- Cheaper than Fibreglass

IDEAL FOR:

- Patios
- Carports
- Zozo Huts
- Hot Houses
- Pool Houses
- Factory Skylights, etc

VALUED 9 years
SMALLHOLDER MAGAZINE ADVERTISER

PLEASE CONTACT
PAUL 084 652 8310
info@4eversheeting.co.za
www.4eversheeting.co.za

4EVER SHEETING
POLYETHYLENE ROOF SHEETING

Quality Agricultural Equipment & Spares

-POMA- MOWER



**Slasher
Gearboxes**

**Blades, Skids
& Bolts**



Ariens 18,7kW
Lawn Tractor

Major Swift 1,9m & 2,4m
Roller Mowers



**PTOs, Components
& Spares**



**RTS 13000LB
4x4 Winch Kit**



Gravely Proturn 60
Zeroturn Mower

SPECIAL OFFER:
Buy a Landini Solis 50 tractor
& we will add a PTO-driven
-POMA- SPRAYER free



Kioti CS2610 20kW
4-WD Tractor



-POMA- SPRAYER

Landini Solis 20,
13kW 4-WD Tractor



Kioti MEC2210 16kW 3-cyl ATV



Landini KIOTI McCORMICK

Also stocking these fine brands



**WORKSHOP
NOW OPEN**
We REPAIR:
Tractors
Implements Mowers
Chainsaws Brushcutters
etc, etc

**1 West Street
Boksburg East
Tel: 011 914-1922
Fax: 011 914-1923**



www.reapersagri.co.za



Landini Solis 50, 35kW 2-WD
Tractor

Pieter Visagie (snr)
082 616-8060
pieter@reapersagri.co.za
Pieter Visagie (jnr)
076 423-9860
sales@reapersagri.co.za

GAUTENG SMALLHOLDER CLASSIFIED ADVERTISEMENTS

**ABSOLUTELY FREE TO
PRIVATE INDIVIDUALS.
CONDITIONS:**

1. Animals (including horses), birds, poultry, fodder, bedding, etc must be paid for as SuperSmalls (see p 56).
2. Wanted ads, services of any kind are also SuperSmalls.
4. No Commercial ads accepted as classifieds (see display ad tariff - p 1).
5. Placement maximum of 3 months

SUPERSMALLS

Entries in this yellow-shaded section cost R120 VAT included for 25 words, plus R1/word thereafter.

FOR SALE

BIRDS & POULTRY

Japanese quails available, already laying, R40 per bird, ideal size for restaurateurs for their tables. Eggs available as well at R250 per tray of 200. Contact Audrey 084 746-1221

Chickens: Layers R145 each, day-old R23 each, four weeks R50 each. Roosters R150 each. Ducks R120 each. Contact Botha 083 304-3060, Mari 072 295-0139 or apbventer@gmail.com

Potch Koekoek: 1 young male, approx 15 weeks old end Feb. Breeding quality bird - R75. Phone Pete 072 587-9137 Bredell

PRETORIA CHICKS

Day-old Broilers
Small numbers for smallholders
Hand-sorted Ross 308 & Cobb
Collect at Lyttelton, Bronkhorstspuit, & near Bapsfontein
083-291-1247

Adorable fluffy yellow day-old ducklings R12,50 each, collected from farm. 074 550-4315 Magaliesberg.

Skrop kapokkies, Bosvelders, Koekoek, wit en Patrys kleur Silkies, Hollandse Kwaker eende, Chinese ganse, gewone ganse, Tarentale, budgies, Kameroense Dwergbokke. Christian 073 230-6474 Hartbeespoort

LIVESTOCK

Potbelly pigs x 14, in very good condition. For pets or breeding. What offers? Kobus 083 773-2954 or Martin 012 345-1052

FISH

Koi fish: Variety of large and small fish in top condition. Make an offer. Phone Kobus 083 773-2954 or Martin 012 345-1052

MISCELLANEOUS

Stop thieves: Outdoor wireless alarms for houses, cottages, outbuildings. 4 outdoor wireless sensors, Main control panel, 2 remote controls, siren, battery, etc. R2 800 installed in JHB or DIY. Also cut fence alarm, www.stopthieves.co.za or contact Colin 079 180-2853.

Stainless steel farm donkey. 210 litre, fire-heated. Constant hot water. From R3 996 incl VAT. Contact 011 762-1212, 082 456-0973 or stainlessspecial@absamail.co.za.

Find us on Facebook
facebook.com/gautengsmallholder

PRODUCE & FODDER

Lucerne for sale in Kempton Park. R70-00 per 50 cm by 70 cm round bale (delivery excluded). Hammered lucerne also available at R6-00 per kilogram. Call 082 569 1679.

1,2m Oulandsgras bale R430, Teff bale R500, Bemeste 2016 bale. Kontak JFR Neuhoff 082 610-3544

6 acres of clean grazing - teff/eragrostis-/kikuyu/veld grass mix - in Kyalami area. Last grazed April 2015, now ready for mowing & baling/otherwise carting away. Will share cutting costs. Call 083 515-8547.

Shavings - 25kg large bags. Meranti - R15/bag, White Pine - R22/bag. Delivery can be arranged for loads of 100-200 bags. Contact Thea or Samantha 011 957-2588

Fruit and nut trees. Olive, peach, nectarine, plum, almond, apricot, walnut, prune, pomegranate, pecan nut, apple, cherry, pear, fig, quince, mulberry, lemon and grape vines. Contact Douw 084 506-5125 Vereeniging.

Indigenous trees. 40 varieties available. Aloes also in stock. Contact 082 801-9555.

FOR SALE

Entries in this section are FREE OF CHARGE, but are for used items, private property sales/rentals and employment offered/wanted only.

FARMING REQUISITES

Chicken manure, free - collect and load yourself. 082 873-9969

Pleysier broeimasjien: semi-automaties +- 350 eiers R5 500. Christian 0732306474 Hartbeespoort

MISCELLANEOUS

Security light fittings. Large commercial lights, old metal halide type etc, 8 in total. R500 the lot. Pete 072 587-9137

Large office desk, dark varnished wood, drawers both sides (one side for hanging files. R500 collected Bredell. Pete 072 587-9137

Hiker's backpack. Lightweight pale blue material, on long aluminium frame (space for sleeping roll under pack). R250. 2-man beige canvas tent (old fashioned, custom made - large enough for space between two sleeping bags.) Needs 2 poles. Ideal kids' play tent. R250. Pete 072 587-9137 Bredell

Clovelly

Day-old Layers
2 & 4 Week old Layers

Day-old Broilers
Day-old White Rocks
Delmas
083 393 0935

Alpacas For Sale
Magic Alpaca's Farm
In Kempton Park offers:
A selection of pedigree Alpacas at competitive prices
Coverings available from stud quality herd sires
Call Lee Ermen 082 455-4288
bounty@iafrica.com

Bekostigbare implemente geskik vir die klein boer SKRAPER Lem is VERSTELBAAR R2 000 • 1.5m wyd • Geskik vir klein trekkers	BOSSIEKAPPER Kante is VERSTELBAAR R6 000 • 1.2m wyd • Sonder PTO • 1.5m ook beskikbaar	STERKARM Pas op driepunt (Cat 1) R1 600 • 2.5m lank • Slasher uitgesluit • Tel swaar items op
----------------------------------------------------------------------------------------------------------------------------------------------------------------	---------------------------------------------------------------------------------------------------------------------	----------------------------------------------------------------------------------------------------------------------------

Pryse sluit BTW in
Aflowering in Gauteng kan gereel word **072 153 8776**

It's
Sheep Shearing Season!
SHEEP SHEARING SERVICE
SKAAP SKEER DIENS
082 602 4462
082 878 5623



DIARY

ATTENTION CRAFT MARKETS, CLUBS ETC: If you would like details of your events included in the Diary, please fax or email your information to the Editor. For non-commercial enterprises this service is FREE.

NOTE: FARMERS' & CRAFT MARKETS. For a listing of REGULARLY HELD markets and fairs please see the separate section on page 51. Only markets that are held infrequently are now listed in this calendar section.

Every Sunday
Cattle drive with City Slickers breakfast, Diamond X Cowboy Ranch, near Cullinan. Call Rudan on 082 410-3180 horses@diamondxrancho.co.za,

www.diamondx.co.za., R500 per person.

Mnandi Methodist Church, 09:00, Mnandi Centre, cnr Tulip and Short Streets, Jen 012 651-5509. Gail 072 477-0708., A small community who worship together. We have a Youth and Children's church.

Premier Mine Presbyterian Church, Lower Oak Ave, Cullinan. Garden of Remembrance (Columbarium), 079 060-9990 or 012 734-1640, Worship and Sunday school. Holy Communion for all on the 1st Sunday of every month.

Every Monday
Alcoholics Anonymous. 'Courage to Change' Group meeting, 19:30, Benoni Agricultural Holdings, Marcus 082 042-

7730. Warren 082 335-0049. Glen 072 239-3024., If you want to drink – that's our problem! If you want to stop – that's our problem! No fees; no dues; just concerned fellowship.

2017

March

4: Folk Music Festival at In the Forest Venue, Aloe Ridge Drive, Walkerville. 0930 – 1900. Tickets at intheforestvenue-nutickets.co.za
7-10: Introduction Course to Beef Cattle Management (4 days), ARC Animal Production, Irene. R2 680. Call Annetjie Loubser, aloubser@arc.agric.za, tel 012

672-9153 or Thabisho Phasha, PhashaT@arc.agric.za, tel 012 672-7273
7-10: Introductory Course in Pig Production (4 days), ARC Animal Production, Irene. R2 680. Call Annetjie Loubser, aloubser@arc.agric.za, tel 012 672-9153 or Thabisho Phasha, PhashaT@arc.agric.za, tel 012 672-7273
11: 9th Purebred Dexter Klub annual auction, 1100am, Willem Prinsloo Agricultural Museum, R101 Old Pta road, near Rayton. Auctioneer: Kobus Ehlers, BKB van Wyk 083 692-9809. Further enquiries Kobus van der Linde 082 783-9605 or Hennie van der Westhuizen 082 879-1945
12: Full moon
20: Equinox
21: Human Rights Day
28: New moon

April

8-9: 55th Walkerville Agricultural Show, Walkerville Showgrounds. Old Vereeniging Road, Walkerville. 08h00 till late
11: Full moon
14: Good Friday

Free Classified Ads

Collectible stationary engines: 3 HP Wolseley (working order), 3 HP Vetsak (working order), 3 HP Lister - petrol. Plus spare magnetos to be serviced. R6 000 the lot. Contact Evan Langley 058 924-0764 or SMS 082 265-4073

Table & four chairs R400. Old tent R300. Tile saw R600. Toilets and wash basins. Dot matrix printer R50. Wooden bed ends

R50. Rocking chair R300. Alarm system R300. Antique Chesterfield R800. Gas geyser R100. Electric geyser R100. Hifi speakers R50. 083 633-3193

PROPERTY FOR SALE/TO LET

Pretoria: Uitzicht: 2ha for sale 17 km from town and 25km from Hartbeespoort. Very neat 4 bedroom, 3 bathroom house. Lovely garden. Ideal for small farmer. Strong borehole, armed response, good security, quiet area. R2 million neg. Contact Louis 072 390-8892

Bashewa, Pta East: 50 ha farm for sale R7m or rent R16 000 pm, 19 km from Solomon Mahlangu Dr, Pta east. Good security area, 3 big bedrooms 2 baths, outbuilding, one side is a river. Available immediately. Call Ben 082 707-6900

Stutterheim E.Cape: 17 000 m² stand in town with beautiful mountain view. All services in place, ideal for development of townhouses, retirement cottages etc. R900.000 Cell 072 305-4890

TRACTORS & IMPLEMENTS

Enrigting dis R3 300, 3-lit eg plus parte R2 000; 5 tand skoffel R1 200. Christian 073 230-6474 Hartbeespoort

Kameeldrift Wit Dorpers
Top Bloedlyn & Geregistreerde Wit Dorper Stoet

- Stoet & Kudde Ramme
- Volwasse Stoet Ooie
- Jong Ramme en Ooie

Sarie
076 541 7986 25km buite Pretoria

Fruit Trees
Olive, peach, nectarine, plum, almond, apricot, walnut, prune, pomegranate, pecan nut, apple, cherry pear, fig, quince, mulberry, lemon and grape vines.

Shade Trees
Vrugteboom
Olyf, perske, kaal perskes, pruim, amandel, appelkoos, okkerneut, pruimedant, granaat, druiwe, pekanneut, appel, kersie, peer, vy, kweper, moerbe en suurmoeien.

Skadubome
Vereeniging
Douw 084 506 5125

Dikgogo Fela
Chicken Abattoir

We slaughter for the Smallholder

LIVE & SLAUGHTERED
Chicken Products for sale.
Open to the PUBLIC!
Randfontein
S 26°12.310' E 027°36.156'
083 401 3002

Find us on Facebook
facebook.com/gautengsmallholder

Ysterberg Mastiff Matcho Stud

Fanie
073 202 5211
Gerda
073 326 4492

matchomastiffs@gmail.com
matchoboole.wix.com/matcho

WIRE WORX

Suppliers of:

- BARBED WIRE
- NETTING WIRE
- WELDED MESH
- GALVANISED WIRE
- STANDARDS & DROPPERS
- B GRADE WELDED MESH
- GATES, POSTS & STAYS
- DIAMOND MESH WIRE

Welded Mesh 1.8 x 100 x 50 x 30m = R850
We only sell quality products!

Kerry: 084 840 0409
kerry.wire@hotmail.com

Buyers of ALL Scrap Metal
TURN YOUR SCRAP INTO CASH

Old cars, trucks, tractors, trailers, machinery etc
We Cut, We Remove
Throughout Gauteng
Simunye Scrap Metal & Recycling
Call Andre 079 547-4249

farina

THE BEST QUALITY FOR MONEY DOG FOOD
HIGHLY NUTRITIOUS
ELEGANTLY BALANCED
DIRECT FROM THE FACTORY
R320.00 per 25 kg bag
Free delivery in Centurion (on Fridays), Kempton Park and Benoni (North of the N12)
Phone or WhatsApp -
Gerhard - 081 552 0126
Or email: gkgroen@gmail.com
75% ABSORPTION RATE
LESS POO TO PICK-UP!!!

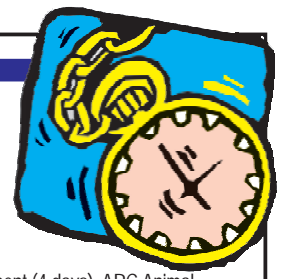
Wordways Ceremonies
From the cradle to the grave

For Non-Religious Ceremonies on the East Rand

Weddings
Baby Naming
Special birthdays
Funerals

Vanessa 083 507 3886
Email: wordwayscc@mweb.co.za
www.wordwaysceremonies.com

DIARY



15: Easter Saturday
16: Easter Sunday
17: Family Day
24-26: Artificial Insemination of Cattle Course (3 days), ARC Animal Production, Irene. Call Annetjie Loubser, aloubser@arc.agric.za, tel 012 672-9153 or Thabisho Phasha, PhashaT@arc.agric.za, tel 012 672-7273
26: New moon
27: Freedom Day
End April, dates to be confirmed:
Summer/Autumn Purebred Dexter Show.
For details contact Kobus van der Linde 082 783-9605

May

1: Workers' Day
8-12: Introductory Course in Poultry Production (5 days), ARC Animal Production, Irene. Call Annetjie Loubser, aloubser@arc.agric.za, tel 012 672-9153 or Thabisho Phasha, PhashaT@arc.agric.za, tel 012 672-7273
10: Full moon
13: Elementary course in beekeeping at Highveld Honey Farm, 186 Uys Street, Rynfield Benoni A.H, commencing 9.00 to 12.30pm. Cost R300 including refreshments. Call convenor Peter Clark 011 362-2904
16-19: Nampo Harvest Day Agricultural Show, Nampo Park, R30 between Klerksdorp and Bothaville.
22-26: Veld management course offered by Africa Land-Use Training, Pretoria. For more information, such as venue and full programme, or the reservation form, email courses@alut.co.za.

25: New moon
27 & 28: Outdoor X Expo at Malonjeni Guest Farm, Heidelberg. Tel 016 423-4073 or email info@outdoorx.co.za.
www.outdoorx.co.za
29-2 Jun: Introductory Course to Small Stock Management (5 days), ARC Animal Production, Irene. Call Annetjie Loubser, aloubser@arc.agric.za, tel 012 672-9153 or Thabisho Phasha, PhashaT@arc.agric.za, tel 012 672-7273
29-2 Jun: Meat Processing Course (4 days), ARC Animal Production, Irene. Call Annetjie Loubser, aloubser@arc.agric.za, tel 012 672-9153 or Thabisho Phasha, PhashaT@arc.agric.za, tel 012 672-7273

June

3: Chelsea Lane Home for Seniors Morning Market, 13 James Road, Fairleads, Benoni. A variety of stalls, a tea garden, live music & entertainment for the kids. Entrance Fee of R30 includes a bacon & egg roll. Plenty of free parking & security. Call Wendy or Bridget 072 696-8367
3: Mampoeffes at Willem Prinsloo Agricultural Museum, old Pretoria/Bronkhorstspuit road, Rayton. Food stalls, a flea market, demonstrations and house tours, pap en kailings, oxtagon rides. Gates open 08h00 for the public and close around 17h00.
6-9: 7-10: Introductory Course in Pig Production (4 days), ARC Animal Production, Irene. R2 680. Call Annetjie Loubser, aloubser@arc.agric.za, tel 012 672-9153 or Thabisho Phasha, PhashaT@arc.agric.za, tel 012 672-7273
9: Full moon

15-17: Kragdag Expo, Diamantvallei Landgoed near Rayton. Afrikaans-focused alternative living exhibition with food, entertainment etc in association with Solidarity. To exhibit call 087 231-1644 or email info@kragdag.co.za. Online bookings at www.kragdag.co.za
16: Youth Day
20-23: Introduction Course to Beef Cattle Management (4 days), ARC Animal Production, Irene. R2 680. Call Annetjie Loubser, aloubser@arc.agric.za, tel 012 672-9153 or Thabisho Phasha, PhashaT@arc.agric.za, tel 012 672-7273
21: Solstice
24: New moon

July

4-5: Dairy Processing Course: Yoghurt and Maas Manufacturing (2 days), ARC Animal Production, Irene. Call Annetjie Loubser, aloubser@arc.agric.za, tel 012 672-9153 or Thabisho Phasha, PhashaT@arc.agric.za, tel 012 672-7273
9: Full moon
18-21: Dairy Processing Course: Cheese Manufacturing (4 days), ARC Animal Production, Irene. Call Annetjie Loubser, aloubser@arc.agric.za, tel 012 672-9153 or Thabisho Phasha, PhashaT@arc.agric.za, tel 012 672-7273

August

3: New moon
3: National Women's Day
7: Full moon
15-18: Introduction Course to Beef Cattle

Management (4 days), ARC Animal Production, Irene. R2 680. Call Annetjie Loubser, aloubser@arc.agric.za, tel 012 672-9153 or Thabisho Phasha, PhashaT@arc.agric.za, tel 012 672-7273
21-25: Introductory Course in Poultry Production (5 days), ARC Animal Production, Irene. Call Annetjie Loubser, aloubser@arc.agric.za, tel 012 672-9153 or Thabisho Phasha, PhashaT@arc.agric.za, tel 012 672-7273
End August, dates to be confirmed: Second Purebred Dexter Spring Show at the Willem Prinsloo Agricultural Museum, Rayton district. For details contact Kobus van der Linder 082 783-9605

September

1: New moon
5-7: Artificial Insemination of Cattle Course (3 days), ARC Animal Production, Irene. Call Annetjie Loubser, aloubser@arc.agric.za, tel 012 672-9153 or Thabisho Phasha, PhashaT@arc.agric.za, tel 012 672-7273
6: Full moon
11-15: Introductory Course to Small Stock Management (5 days), ARC Animal Production, Irene. Call Annetjie Loubser, aloubser@arc.agric.za, tel 012 672-9153 or Thabisho Phasha, PhashaT@arc.agric.za, tel 012 672-7273

Fire beater

FIGHT VELD FIRES EFFECTIVELY

Get yours TODAY: It's the LAW!!

1,8m long, thick but lightweight wooden handle keeps user away from smoke & flame

Unbreakable Fastening

Made from recycled rubber belting (not strips)

Only R90,00 cash & collect
Price includes Vat.
Trade enquiries welcome
Scrap belting also available

Solid rubber sheet SMOTHERS flames FAST!

To order call
Derek Whittall
078-706-6456

LIVESTOCK SALES

Auctions: Bronkhorstspuit - Every Tuesday
Gys Taute 083 253 6906
Delmas - 2nd & 4th Thursday
Johan Taute 073 204 7646
Belfast: Wednesdays - Ermelo: Thursdays - Standerton: Fridays

Vleissentraal Ermelo
017 819 1106
www.vleissentraal.co.za



Raspberry Canes

BUY NOW - LIMITED STOCK
Plant NOW for delicious fruit at Christmas!

In 2 litre bags: R15
Cash & Collect

072 587 9137
sweetberries@mweb.co.za

GRAPHIC DESIGN WEBSITE DESIGN SOLUTIONS

**Website design,
development & redesign**

**Brand
Identity/Logo
Marketing
Materials
(business cards,
letterhead,
folder, logo)
Flyers/Leaflets
Print/Graphic
Design**

**Print/Graphic
Design
Brochures
Packaging
Design
Restaurant Menu
Invitation
Poster/Banner
Print Ad**

tel: +27 11 979 5088
graphics@gautengsmallholder.com

DIARY

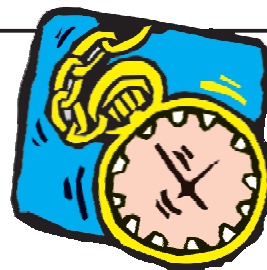
18-22: Aquaculture management course (5 days), ARC Animal Production, Irene. Call Annetjie Loubser, aloubser@arc.agric.za, tel 012 672-9153 or Thabisho Phasha, PhashaT@arc.agric.za, tel 012 672-7273
20: New moon
22: Equinox
24: Heritage Day
25: Heritage Day spillover holiday

October

5: Full moon
9-13: Meat Processing Course (4 days), ARD Animal Production, Irene. Call Annetjie Loubser, aloubser@arc.agric.za, tel 012 672-9153 or Thabisho Phasha, PhashaT@arc.agric.za, tel 012 672-7273
16-20: Introductory Course in Poultry Production (5 days), ARC Animal Production, Irene. Call Annetjie Loubser, aloubser@arc.agric.za, tel 012 672-9153 or Thabisho Phasha, PhashaT@arc.agric.za, tel 012 672-7273
19: New moon

November

4: Full moon
7-10: Introductory Course in Pig Production (4 days), ARC Animal Production, Irene. R2 680. Call Annetjie Loubser, aloubser@arc.agric.za, tel 012 672-9153 or Thabisho Phasha, PhashaT@arc.agric.za, tel 012 672-7273
18: New moon
22-23: Introductory Course to



Veld/Rangeland Management (2 days), ARC Animal Production, Irene. Call Annetjie Loubser, aloubser@arc.agric.za, tel 012 672-9153 or Thabisho Phasha, PhashaT@arc.agric.za, tel 012 672-7273

December

3: Full moon
16: Day of Reconciliation
18: New moon
21: Solstice
24: Christmas Eve
25: Christmas Day
26: Day of Goodwill

Snake Catcher

Protect Guests, Family, Friends, Animals, Livestock



Only R 1295.00 & **FREE** Postage
Call or SMS Ralph: +27 825730710
Or email: SnakeAlert@Global.co.za

**Having difficulty
finding a copy of**

GAUTENG SMALLHOLDER MAGAZINE

SUBSCRIBE
and we will send
it monthly by post

Please post me the Gauteng Smallholder for the next 12 editions. My cheque/ postal order for **R210-00** made payable to **BOWFORD PUBLICATIONS**, is enclosed.

NAME: _____

Tel: _____ e-mail: _____

Postal Address: _____

code _____

Please make cheques or postal orders payable to **BOWFORD PUBLICATIONS (PTY) LTD** (not the Smallholder). Post coupon & payment to: Subscriptions, Box 14648, Bredell 1623 or phone 011 979 5088 for our banking details if you prefer to do an EFT instead.

R210
for 12 editions

Regular Gauteng Farmers' Food Markets

NOTE: This is a listing ONLY of markets held to a regular weekly or monthly schedule. Markets held less frequently are listed in the DIARY section of the magazine and we urge readers to check each month for dates and events of interest. We would like this list of food markets to be as comprehensive as possible. If you know of farmers' food markets that are not listed here, please email us the contact details of the organisers, and details of the market. Only FOOD markets are included. Similarly, if you know of markets in this list that have CLOSED please inform us so that we can delete incorrect or outdated information. We invite you to tell us of your experiences when visiting these markets so that we can better inform our readers. Were they as advertised? Was the produce on sale plentiful, well-priced, well-presented and fresh? Email your comments to editor@gautengsmallholder.co.za

DAY	WHAT	WHEN	WHERE	WHO TO CONTACT	WHAT TO EXPECT
Thursday					
Every Thursday	Bryanston Organic & Natural Market	09:00 to 15:00	Culross Road (off Main Road), Bryanston.	Konrad or Glenda 011 706-3671 or glenda@bryanstonorganicmarket.co.za	Quality hand crafted goods, unique art and fresh organic and naturally grown produce
Friday					
1st Friday	The Shed Night Market	18:00 to 22:00	109 Malcolm Road, Randvaal	Felicity 073 232-0017 or 081 011-9456	Food & craft market.
Saturday					
Every Saturday	Tuinhekkie Farmers Market	08:00 - 14:00	cor Lazar Ave & Merwe Road Bootha Plots, Randfontein	Amanda Hefer 073 565-8905	Handmade products, numerous food stalls, flowers live entertainment most Saturdays, farmyard for the kids
Every Saturday	Verster Park Tuin Mark	09:00 - 15:00	Plot 21, Lang St, Verster Park Bronkhorstspuit	Maggie van Rheede 061 887-4149	Hand crafted goods, art, naturally-grown produce Community market to promote local business
Every Saturday	Wholefood Country Market	09:00 - 14:00	Sawasdee Exotic Nursery, cor Main & Zinnia Roads, Kyalami	Robyn 083 311-4768 wholefoodmarket@gmail.com	Variety of organic & homemade foods
Every Saturday	The Shed Food & Craft Market	08:00 to 15:00	109 Malcolm Road, Randvaal	Felicity 073 232-0017 or 081 011-9456	Food & craft market.
Every Saturday	Pretoria Boeremark	05:30 to 09:30	Pioneer Open Air Museum, Silverton.	012 804-8031 or 082 416-3900 blinsga@lantic.net	Fresh produce and traditional bazaar treats like jaffles, kailings with pap and boerewors rolls.
Every Saturday	Bryanston Organic & Natural Market	09:00 to 15:00	Culross Road (off Main Road), Bryanston	Konrad or Glenda on 011 706-3671 glenda@bryanstonorganicmarket.co.za	Quality hand crafted goods, unique art and fresh organic and naturally grown produce
Every Saturday	The Hazel Food Market	08:00 to 14:00	Greenlyn Village Centre, cor Thomas Edison & Mackenzie Sts, Menlo Park, Pta	Rietha 083 554-5636. www.hazelfoodmarket.co.za	Fresh produce straight from the producer. Coffee, eats on sale
Every Saturday	Walkerville Farmers Market	09:00 to 15:00	R112 Main Road, Walkerville	079 076-7680 info@wfmmarket.co.za	Fresh produce, arts & crafts, food court and kids play area
Every Saturday	Walkerville Agricultural Market	09:00 to 15:00	K154 T-junction with R82	082 573-2780 market@walkervillesa.co.za	Organic produce and Crafter's Market. www.walkervillesa.co.za
Every Saturday	Bosheuvel Fresh Produce	09:00 to 15:00	54 Glory Road, Muldersdrift	Milch 082 553-2846	Meats and vegetables, delicacies, honey, cheese, brewery, crafter's market and children's entertainment.
Every Saturday	Market @84	09:00 to 14:00	84 On Main, Walkerville	Ariel 078 223-9238	Fresh organically grown produce and crafters market
1st Saturday	Jozi Real Food VEGAN Market	09:00 to 15:00	Pirates Sports Club, Braeside Avenue, Greenside	083 532 2992 whitespace@mweb.co.za	Arts & crafts, live music, vegan cuisine, organic vegetables & coffee
1st Saturday	The Green Market	09:00 to 12:00	Pretoria Botanical Gardens 2 Cussonia Avenue, Brummeria, Pretoria	Melissa 083 562-5249	Products ranging from solar equipment to organic food
1st Saturday	Victus Christi Arts & Crafts Market	08:00 to 14:00	24b Miles Sharp Street, Rynfield, Benoni (north side of Bunny Park)	Schalk 082 561-9409 info@victuschristi.org.za	Arts & crafts, fine art, food, fresh meat & produce and home industry
2nd Saturday	Brakpan Boeremark	09:00 to 14:00	cnr van der Walt and Dirk van der Hoff Brakpan	Marius 011 744-2322 082 904-8852	Over 50 stalls. Food, arts, crafts, etc.
Last Saturday	Fresh2U Farmers Market	08:00 to 14:00	Corner Main Street and High Street Modderfontein (behind 33 High Street)	Jane 083 376 5567 Chantelle 082 338 7818 wardek@iafrica.com	Over 50 stalls. Fresh produce, home made goods, plants, food and more.
Last Saturday	Fresh Produce Market	08:00 to 13:00	Lakeside Mall Boathouse	Alma 079 940-0201 realfood4realpeople@gmail.com	Local fresh produce direct to the public
Last Saturday	Windpomp Market	08:00 to 14:00	Broodblik & Koffiepit on the R51 between Petit & Bapsfontein	adelekoffiepit@gmail.com 083 445-1608	Homemade crafts & food stalls bakery & coffee shop and entertainment
1st Saturday	Bunny park food and craft market	09:00 to 14:30	Bokkie park, Southvale Rd, Parkdene, Boksburg	Janine Richardson 072 713 3332	Arts & crafts, fine art, food,
Sunday					
Every Sunday	Fourways Farmers Market	10:00 to 15:00	Corner Montecasino Boulevard and William Nicol Drive, Fourways	011 465 0827 www.ffmarket.co.za	Get your groceries...In the garden!
Every Sunday	Jozi Real Food Market	09:00 to 14:00	Northcliff Country Club, Fir Avenue, Northcliff	083 532 2992 whitespace@mweb.co.za	Arts & crafts, music & entertainment, inspired cuisine organic vegetables & coffee, pet products
Last Sunday	Aloe Valley Food, Arts & Craft Market	10:00 to 14:00	48, R511 Doornrandjies	012 669-3043 info@serendipitycafe.co.za www.serendipitycafe.co.za	Community market to promote local business

SuperSmalls

ONLY R120 PER ADVERTISEMENT (25 WORDS)

Conditions:

1. Small advertisements that do not qualify for FREE CLASSIFIEDS: PRODUCE, FODDER, PLANTS, LIVESTOCK & WANTED ADS.
2. Cost: R120-00 per 25 words or part thereof. Additional words chargeable at R1-00 per word.
3. Payments to be made to BOWFORD PUBLICATIONS (PTY) LTD, Nedbank Northmead, Account 1948 073 099.
4. Use your telephone number as reference on your payment.
5. Advertisements will only be published on our website and in the magazine when paid for.
6. The Publisher reserves the right to edit or omit advertisements at his discretion.
7. It is the Advertiser's responsibility to ensure we have received the advert and payment.
8. Services do not qualify for SuperSmalls. Please see our business rates on page 1.

USE THE SuperSmalls FOR:
PRODUCE, FODDER, PLANTS,
ALL ANIMALS & PETS including HORSES,
POULTRY, AND WANTED ADS.

USE THE COUPON BELOW FOR SuperSmalls

Tel:

DEADLINE for submission: 15th of the month prior
FOR ENQUIRIES TEL 011 979-5088

Send your advertisements and PROOF OF PAYMENT to:
BY FAX: 086 602-3882
BY POST: Box 14648, Bredell 1623
BY EMAIL: gautengsmallholder@gmail.com
BY HAND: 370 da Costa Dr, Bredell, Kempton Park

1 WORD (BLOCK CAPITALS) PER SPACE, PLEASE

FREE CLASSIFIED ADVERTISEMENTS

Conditions:

1. Only private advertisements for used or second-hand items accepted. COMMERCIAL and BUSINESS advertisers should refer to our rates on page 1, and those selling PRODUCE, FODDER, PLANTS or LIVESTOCK OF ANY DESCRIPTION should refer to the **SuperSmalls** coupon above.
2. Only ONE insertion per application, and one category per coupon.
3. No DEALERS or AGENTS or COMPANIES permitted in the free classified section..
4. No ANIMALS (including HORSES), PETS or POULTRY permitted as free classifieds
5. No WANTED ads will be accepted as free classifieds.
6. No SERVICES will be accepted as free classifieds.
7. Classified advertisements may only be submitted for three consecutive editions.
8. The Publisher reserves the right to edit or omit advertisements at his discretion.
9. It is the Advertiser's responsibility to ensure we have received the advert.

USE THE COUPON BELOW FOR FREE CLASSIFIED ADS

Tel:

DEADLINE for submission: 15th of the month prior
FOR ENQUIRIES TEL 011 979-5088

Send your Classified advertisements to us:
BY FAX: 086 602-3882
BY POST: Box 14648, Bredell 1623
BY EMAIL: gautengsmallholder@gmail.com
BY HAND: 370 da Costa Dr, Bredell, Kempton Park

1 WORD (BLOCK CAPITALS) PER SPACE, PLEASE

It's called progress

My, how things have changed in the 18 years since this magazine started! The other day I was invited to give a presentation on the magazine and its origins to an association meeting nearby.

This necessitated a bit of research on my part ~ 18 years is a long time, and at my age the memory begins to dim somewhat. But it also gave me pause for reflection upon the changes that have taken place in the environment in which we operate. Long-time readers will know of the physical changes that the magazine has undergone. Until 2008 it was printed on A4 photocopy paper, and bound down the left hand edge by two staples. We started with only a few thousand copies, distributed solely on the East Rand. Then, by adding 500 copies here and 1 000 there we began distributing in Blue Hills, then Honeydew and Muldersdrift, then Pretoria East, and Delmas, and then we made a foray south to Walkerville and De Deur. The maximum number we ever printed on our own presses was 12 500, decided simply by this being the number of sheets of paper in five boxes, which made budgeting easy – five boxes per sheet times twelve sheets? Go and buy 60 boxes of Typek. Originally, all the text and advertisements were in black only, and the magazine was printed on old (50 years old, or more) single colour presses which printers disdainfully dismiss as “duplicators.”

A series of these machines, as well as ancillary equipment such as collators and a guillotine, were housed in my double garage. This is linked to my home which, as a result, was redolent (aka it stank) perpetually with the pungent, and probably toxic, odour of ink, paper and solvents. This, and the perpetual noise from the presses as we hammered away for 18 hours a day for up to three weeks of the month did nothing for either my marital or familial relations...

Interestingly, there are a few advertisers from those very early days who are still selling their wares through our pages today, so while my marriage may have been in jeopardy at least the magazine was achieving what we had set out to achieve. Gradually, advertisers began demanding colour in their ads and so slowly we added, first, single spot colours, and then full colour in a few cases.

This proved a technological nightmare for us on single colour presses and in time we bought a larger, A3 two-colour press. This magnificent beast was a joy to operate when it was running well but, sadly, it had been built at the time when the first little

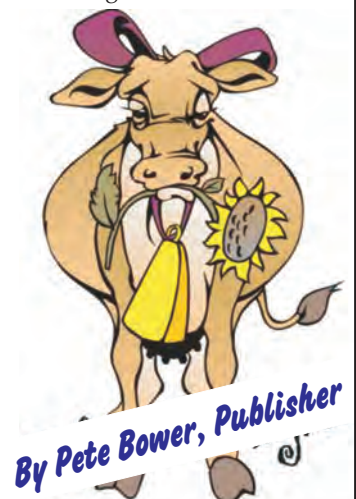
bits of microchip technology were being applied to industrial machines and its microchip boards were anything but fault free. And so they were quickly bypassed and disconnected, resulting in a machine that operated with an impressive electronic control panel of flashing lights and counters, the information being displayed being absolutely meaningless. Meanwhile the various gates and sensors connected to the lights were bypassed using elastic bands, paper clips and duct tape.

And collating took place around our dining room table, undertaken by a team of “casuals” ~ otherwise unemployed ladies from nearby plots who would spend their days walking round and round the table putting the pages together, talking loudly as they worked, and occasionally dipping into my booze cabinet for sustenance.

Eventually, nearly ten years ago printing in the garage became too much for us and we graduated to the services of a commercial printer to produce the magazine you are reading today. This also enabled us to grow beyond the five boxes per sheet and our distribution area has grown concomitantly and now swallows up 19 000 copies monthly.

In the 18 years great strides have been taken in the field of technology. GPS technology is now commonplace, cellphones are sophisticated devices on which one can read magazines. As a result we now have an electronic version of the magazine, which you can download to your home computer, read online or even enjoy on your smartphone.

Websites such as Gumtree and OLX have just about killed the need for printed classified ads (though we still enjoy a fair number of old-timers selling their livestock and used farming stuff through our pages). And the word “smallholder” itself has taken on a new meaning, having been appropriated by the government to describe the new generation of emerging Black farmers, settling areas outside those that we identified as smallholdings in the late 1990s. And those are the readers we hope to begin serving as well.





BENTONITE

NATURAL CLAY LINER

For sealing Earth Dams ● Repairing leaking Earth Dams

- Easy to use
- Economical - only 1 x 40kg bag per 3 square metres
- Environmentally friendly

SALES: Call 0861 113 965 Fax 011 646-2144

For implementation guide visit: www.clay.co.za

Revet Authorised Retailer of

JOHN DEERE

CLOTHING, TOYS AND NOVELTIES

clothes



signs



bedding



novelties



Huge Variety, Great Service!

We courier nationwide



Revet 48 Pomona Road Kempton Park | Tel 011 965 1292 | Cell 083 680 7746

Trading Hours: Mon - Fri 07h00 - 17h00 | Sat 08h30 - 13h00