

GAUTENG SMALLHOLDER

MAY 2018

HOW TO MAKE YOUR PLOT PROFITABLE

Now also available
~ as published ~
ONLINE... go to
www.sasmallholder.co.za

Free magazine:
Take one!



NEW!!
SASFOX.co.za
SA SMALL FARMERS
ONLINE EXCHANGE
Buy . Sell . Swap Koop . Verkoop . Verruil

f Find us on
Facebook

facebook.com/gautengsmallholder

IN THIS EDITION:
Preparing for the Fire Season
Hampshire Downs in Randfontein
Useful Medicinal Herb
Autumn Watering Guidelines
... and much more...

More than 20 000 copies* distributed monthly throughout Gauteng

*including online readers at www.sasmallholder.co.za

Visit us at Nampo 2018

Stand Nos D9 & D10
15 – 18 May 2018



MFANGANO
SOLUTIONS [Pty] Ltd

Gravelly
ride-on
mowers



Ariens Tractor
Mower



Major-Equipment roller mower



Major-Equipment flail collector

Ariens log splitters



225 Chippers -
Trailer-mounted or
PTO-driven



Rayco stump grinders



Willibald Mini Shark II



TS Industrie Chipper



TS Industrie
Chipper



Gravelly Atlas JSV



Please call us for Wood Chippers ~ Big and Small, Horizontal Wood Grinders,
Forestry Mulchers, Wood Shaving Machines, Lawn Mowers, Log Splitters
& Compost Turners. Also Brushcutters, Chainsaws & Blowers etc

Dealers
Kzn and Mpumalanga
Reapers Agri
sales@reapersagri.co.za

Western Cape
MC Swart
082 650 3503

Port Elizabeth
Belmore Forest and Gardens
belmorefg@isat.co.za
041 365 4869

sales@mfangano.co.za
precious@mfangano.co.za
011 440 2072/072 244 9551
19 6th Street, Wynberg, Sandton, 2090
www.mfangano.co.za



PUBLISHED BY

Bowford Publications (Pty) Ltd
Established 1985

(Reg No 2004/019727/07)

PO Box 14648, Bredell 1623

Tel: 011 979-5088

or 076 176-7392

Fax: 086 602-3882

website:

www.sasmallholder.co.za



facebook.com/gautengsmallholder

PUBLISHER & EDITOR

Pete Bower

email: gautengsmallholder@gmail.com

RESEARCH EDITOR

Vanessa Bower

email: vanessa.bower@mweb.co.za

GRAPHIC DESIGNER

Mark Hageman

email: graphics@gautengsmallholder.com

ADVERTISEMENT SALES

Pete Bower

email: gautengsmallholder@gmail.com

ADVERTISING RATES

(All Rates Full Colour, incl 15% VAT)

Full Page - R7 546

Half Page - R4 661

Quarter Page - R2 593

1/8 page - R1 372

Smaller sizes: R105 per col cm

(Minimum size - 4 col cm)

(Black only: colour rate less 20%)

Booking discounts

Payment lumpsum in advance.

3 insertions - less 10%

6 insertions - less 15%

(other payment and discount options are available)

Circulation

More than 19 000 copies* distributed

free through outlets in the Agricultural

Smallholding settlements of

Gauteng and adjoining provinces.

* excluding on-line readers.

By Mail

To receive the *Smallholder* by mail

subscribe for only R210 per year.

See coupon in this edition.

Online Magazine

www.sasmallholder.co.za

Online Classified Ads

www.sasfox.co.za

Copyright

Title and contents protected by copyright. No part of this publication may be reproduced or stored in any form whatsoever without the prior written permission of the publisher.

Disclaimer

While every care is taken to ensure the accuracy of the information in this journal, neither the Editor nor the Publisher can be held responsible for damages or consequences of any errors or omissions. The Publisher does not stand warranty for the performance of any article or service mentioned in this journal, whether in an advertisement or elsewhere.

FRONT COVER

Grass cutting, raking and baling time. Soon this rusty old relic will be put to work again.

COMMENT, by Pete Bower

Our big problems



Somebody needs to offer President Ramaphosa a new brand of tobacco, because whatever it is he's smoking is doing nothing for his views on a certain sector of the economy.

Either that, or he's unclear about the difference between a "sunrise" and a "sunset", and how those two words are used in management-speak to describe an economic sector or an industry.

Or, perhaps, he really DOES believe that mining has a future in South Africa, in which case one wonders whether he is indeed the right man for the job.

The fact is that, historically, the wealth of the country has been realised through the mining houses who, by employing hundreds of thousands of workers, not all South Africans, it should be added, and investing many millions of pounds and then rands, made the South African economy the largest and most vibrant on the African continent, not to mention making the country the largest producer of precious metals and minerals in the world.

But the fact is also that the gold mines of the Witwatersrand began to be mined out at workable depths many decades ago. First, to remain profitable and in business they had to go deeper, developing an expertise in ultra-deep-level mining that made those mines world leaders in the field. Then, when even this became unprofitable the mining houses started looking elsewhere for business, and gradually shafts were closed, operations changed hands and were reduced, and investment made in the new mining countries such as Brazil, Peru, Australia and North America. And there's where the sunrise mining industries are to be found today. From the '70s it became obvious that the writing was slowly being written on the wall: it was a sunset industry as long ago as that.

The government of the day was not the ANC, of course, but its response to the inevitable decline was hardly spectacular. For it was faced with its own challenges, including international sanctions, which made the development and encouragement of a vibrant export-led industrial and manufacturing sector difficult. But the response of the ANC government, when sanctions were lifted, has hardly been any better, with restrictive labour laws, uncertainty over investment policies and the constraints imposed by BEE regulations on free investment (and not mentioning the bribery and corruption that accompanies the awarding of many municipal, provincial and national infrastructure tenders). Far from growing, our manufacturing sector has also been in decline for years.

But there's more to our economy than mining and manufacturing. To replace a waning mining sector the government could have done far more to encourage agricultural production, but it didn't because, at least since 1994, there has been no fruitful voter constituency for it to exploit there: farmers were, and still are (for the moment at least), in the main, conservative whites.

Or, another replacement for the mining sector could have been to encourage tourism. But then Mr Zuma appointed Malusi Gigaba as home affairs minister and his introduction of stupid restrictive visa regulations put paid to that.

So what, actually, has the government done? In response to widespread unemployment, the government has its Extended Public Works Programme (EPWP), which employs many thousands in basic construction and maintenance and affords them the ability to acquire basic skills which, arguably, they should have been taught in school. The problem is that the EPWP is, like the social grant system, not funded by the additional revenues generated by an expanding and thriving economy. It's paid for by the taxes of those already being taxed. The revenue pumped into both programmes results in direct consumption expenditure. It is not a result of wealth creation. There is very little multiplier effect in direct consumption expenditure, at least nothing like what one would get if those jobs and that revenue had been generated by vibrant and growing agricultural, manufacturing or tourism sectors.

And now the government chooses to chase away any new international industrial or agricultural investment by tinkering with property ownership and expropriation of land, in the belief, rather, that handing out parcels of land to the indigent will turn them into instant farmers and lead to a huge expansion of the agricultural sector and the much-vaunted but little-understood holy grail of "food security".

Clem Sunter said it years ago. We need an "Economic Codesa" at which a coherent approach to these issues can be thrashed out. Sunter's suggestion has now become urgent. Leave it any longer and it may be too late for us all.

WESVOERE FEEDS

BAPSFONTEIN

Best quality for the farmer's success

Stockist of:

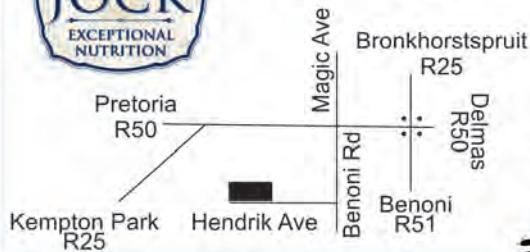
Lucerne & Eragrostis Bales

Cattle, Sheep, Game,
Chicken & Pig Feeds
and much more...

Protein, Phosphate,
Winter & Mineral Licks
Ivomec, Browse & Diatoms



Dog Food



BOSKOS
Natural feed
for all
Herbivores



FREE DELIVERY WITHIN 25KM
Gauteng & Mpumalanga

TEL: 011 822-8503
011 964 1323
FAX: 086 630-2616
sales@gas2u.co.za
www.gas2u.co.za



S26°0.180 E28°24.807

14 Magic Avenue
Bapsfontein
(near BP Garage)

GAS SPECIALS

Collection only

All prices include Vat

LPG



R140.00 R295.90 R747.50 R46.75 R70.10 R77.86 R109.85

Cadac Adventure
Stove Set



R299

Limited Stock Available

Total Fishermans
Lamp
120cp



R270

Limited Stock Available

Safegas Cooker Top



R139

Limited Stock Available



Brand New 9kg Maxi Gas cylinder R450.00

Brand New 19kg Maxi Gas cylinder R780.00

Brand New 48kg Maxi Gas cylinder R950.00

Rhodium Cutting Disc
115 x1.0 x 22.23mm



R16

Bulldog Flap Disc Gold
Flat 115mm x 22mm P60



R35

Talon 2 Stroke
26cc Petrol
Blower



R1999

Limited Stock Available

Pferd Cutting Disc
115 x 2.4 x 22,23mm



R22

**Phone in store for
delivery prices**

**Every day is
pensioners day
Less 10% (Gas Only)**



SEPTIC TANK PUMPING



0861 11 33 24
WE TAKE YOUR SHIT!

ROOF SHEETING



Buy direct
from factory

ADVANTAGES:

- Shatterproof, Weather & Hail Resistant
- UV Protected
- Over 70% Light Transmission
- **Product is 2,5mm thick**
- Domestic & Industrial
- Easy to Install - DIY
- Choice of 4 Colours
- 7 Year Guarantee
- Cheaper than Fibreglass

We Deliver

IDEAL FOR:

- Patios
- Carports
- Zozo Huts
- Hot Houses
- Pool Houses
- Factory Skylights, etc



PLEASE CONTACT
Sandra 083 233 3820
info@4eversheeting.co.za
www.4eversheeting.co.za

4EVER SHEETING
POLYETHYLENE ROOF SHEETING

Because hard work should be fun

1050mm Universal Tow Mower



250 Ltr 4m Tow Boom Sprayer



100 Ltr 8m Mounted Boomless Sprayer



12 Volt Mounted Spreader



Tow Broadcast Spreader



Steel Caged Dump Cart

Over 50 different implements available to suit Quad Bikes, Lawn Tractors and Ride-on Mowers.

Mowers Wagons Arena Rollers Rakes
Dump Carts Chariots Rollers Tankers
Weed Wipers Spreaders Sweepers Tool Bars
Sprayers Aerators Harrows

Phone: (033) 330 6247
Fax: (033) 330 8234
e-mail: info@quadmaster.co.za
Web: www.quadmaster.co.za

Q M
QUAD MASTER
ATV IMPLEMENTS

Turn your quad bike into a work horse!



HURRICANE PUMPS



Bring this
advert in
for a
10% discount
4" Pumps only
retail customers only

4SD2/8 0.37KW 220V
Borehole Pump
Motor and Control Box
2000ℓ/hour @ 40m

R2170
excl

4SD2/11 0.55KW 220V
Borehole Pump
Motor and Control Box
1800L/hour @ 68m

R2365
excl

4SD214 0.75KW 220V
Borehole Pump
Motor and Control Box
2000ℓ/hour @ 80m

R2565
excl

4SD2/20 1.1KW 220V
Borehole Pump
Motor and Control Box
1800ℓ/hour @ 120m

R3120
excl

6" Pumps & Motors Now Available

6" Pump Ends 9.2KW
to 22KW
From

R4000,00 excl. V.A.T

6" 380V Sub Motors
7.5KW to 15KW
From

R5200,00 excl. V.A.T



**Large models up to 2.2KW
in 220V and 7.5KW in
380V also available from stock**

Contact : Dawid on 082 310 1541 or 010 597 7843

Email : sales@hurricanepumps.co.za

184 Boundary Road, Mnandi, Centurion

Co-ordinates : S25°53' 53.7" - E028°03' 45.2"

See www.hurricanepumps.co.za for our full range of products

Contact : Rae on 079 892 2782 or 015 297 2444

Email : rae@hurricanepumps.co.za

86 Oost Street, Polokwane, Limpopo



EU funds citizen enviro-action project

A newly established project named Action 24 seeks to empower citizens to deal with legislators on environmental issues.

The organisation has representatives from:

- ☐ Food and Trees for Africa;
- ☐ African Climate Reality Project;
- ☐ SA Institute of International Affairs;
- ☐ SA Durban Community Environmental Alliance, and the
- ☐ Ekurhuleni Environmental Organisation.

Action 24 is co-funded by the European Union and encourages a bottom-up approach to environmental issues.

The organisation says it aids citizens in holding government accountable for the lack of action on environmental issues and to challenge government on issues of proper environmental management.

Targeting four provinces (Gauteng, Western Cape, Limpopo and KwaZulu Natal) and national parliament,

Action 24 seeks to address issues that overlap within systems of sustainable environmental management. This includes addressing issues of women empowerment and youth engagement. Special focus will be placed on creating awareness and bettering education within communities affected by environmental change and mismanagement.

The organisation aims to use a two-pronged approach. Firstly, it says it will work closely with local organisations, civic society and projects at a grassroots level to assist in these organisations' understanding of legislature and how to push their agendas with key-decision makers.

Secondly, Action 24 seeks to work directly with law-makers to assist in improving the

processes of public-participation in law-making.

"We want more openness, more communication on what they are doing and making sure that they understand their mandate from that perspective," says Noelle Garcin, Action 24 project manager.

The project started in January 2018 and will continue for 30 months, hoping to foster active citizenry across South Africa, encouraging increased accountability and good governance.

Not a bad season in Gauteng

While much of the western part of South Africa continues to be gripped by devastating drought Gauteng, now at the end of its rainy season, has enjoyed a slightly better-than-average season. By

mid-April Bredell in eastern Gauteng had received nearly 790mm of rain, only 125mm short of last season's exceptional total of 915mm.

Less though it may have been, it was enough to fill the Vaal

Continued on page 6

BREDELL GAS & HARDWARE

Hardware *Warming up the season with fresh gas*

Dry Cleaning

OPEN ON SUNDAYS 09:00-12:00

Bredell Shopping Centre
3rd Ave, Bredell Tel 011 396-1662


BOSKOS

STAR FEEDS VOERE

- **GAME PELLETS**
40kg bag
R189.50 + 15%
= R217.93
- **GAME PROTEIN LICK BLOCK**
With Aloe 20kg
R124.50 + 15%
= R143.18



5 Tons in stock. **FREE DELIVERY**
20km radius from Parys

CARLOS: 083 653 2780
stargamefeeds@gmail.com

RATC PROFESSIONAL SERIES

PRECISION MOWERS SALES-SPARES-REPAIRS

WEMA

High Pressure Fire Fighter



- Pressure from 35BAR to 50BAR
- Flow Rate 20l/min to 41l/min
- Tank sizes from 620l to 1 000l
- Unit without tank available
- Petrol / Diesel options available
- Double Hose-reel options available



Best Buy!

FROM R19 995 incl VAT

VENTURI ALSO AVAILABLE P.O.R

GOSCOR POWER PRODUCTS

2 Pioneer St, Glen Marais
Kempton Park

PRECISION MOWERS SALES-SPARES-REPAIRS

www.precisionmowers.co.za
info@precisionmowers.co.za
011 391 0708/10

Price includes VAT. Prices are subject to change without prior notice. E&OE

ONLINE Website undergoes a radical makeover

The *Smallholder's* national website, [www.sasmallholder-](http://www.sasmallholder.co.za)

.co.za, has undergone a radical transformation, turning it into a fully-fledged informa-

tion portal for small farmers, smallholders and rural dwellers.

The site will continue to host a pdf version of the pages of the published magazine,

Continued on page 7

WEATHER

From page 6

Dam was continuing to be augmented by water from the Lesotho Highlands Water Scheme which itself is not as full as it might be.

Meanwhile, the wet season approaches in the Western Cape and with it the hope that there might be a gratifying inflow into the region's feeder dams. Whatever the catchment areas of those dams

receive however, water scientists are saying that it will take some years of good rains in the region as the soil around the dams has now dried out to such an extent that it will act as a gigantic sponge for anything that might come its way, and the remoisturising effect will thus take precedence over an increase in water levels in the dams themselves.

At this stage it is still a little early to predict whether the winter rainfall area will receive poor, average or good rains this year, just as it is too early to predict what will develop in the Central Pacific by way of an El Nino or La Nina effect which, in turn, will affect the southern hemisphere's weather later in the year. Those analyses normally firm up after July.

Good news for South Africans, however, is that the catastrophic weakening of the Gulf Stream in the mid and North Atlantic will have little if any effect on these parts. Rather, North America, Europe and to a certain extent North Africa can expect more violent seasonal temperature differences and more violent storms in coming years, as a result of the weakening of the current, by as much as 15% since 1950, according to some analyses.

The Gulf Stream is a major warm water surface current that flows across the Atlantic between West Africa and Central America, before turning northwards and flowing up the Eastern seaboard of the US, dispensing heat, fog and rain as it goes.

Once it reaches the Canadian coast it has lost its warmth, the body of water of the current sinks and becomes a cold deep water current, and it splits in two, one half going northwards past Greenland and towards Norway and the other turning southwards past Britain and western France.

LOVOL
FOTON Agri SA



A division of ABC Hansen Africa

THE TRUST TRACTOR

SPARES & SERVICE COUNTRYWIDE



Complete with PTO, 3 point, hydraulics.

25 and 35 HP Ideal for intensive cultivation, landscaping etc.

Up to 90HP available.

Best value.

Contact importer direct:

012 803 0036

www.lovolfotontractors.co.za

info@lovolfotontractors.co.za

SEAL YOUR DAM OR POND - YOURSELF!

NEW IN SA: AQUA PLASTECH D.I.Y DAM & POND SEALER



SEALS DAMS WITHOUT DRAINING

Manufactured in Australia.



Perfect for sealing, leaking, bentonite dams.

Agents Wanted Throughout SA

- Seals dams without draining
- Simply spread directly on to water surface
- Do it yourself: Easy to apply
- No specialised labour or equipment
- Eco-safe: non-toxic to fish & wildlife
- Biodegradeable

AQUA PLASTECH

Andre - 072 378 1257
info@aquaplastech.co.za

Cost-effective, Easy coverage - only 75 - 100g/sqm

Full product details at
www.aquaplastech.co.za

Find us on facebook

ONLINE Website takes the Smallholder to a whole new level for users countrywide

From page 6

which can either be accessed in page form for reading on your computer, tablet or mobile device, or for download as a pdf to allow you to read the magazine offline at your leisure.

However, in addition to these two options, articles of interest to smallholders will be uploaded to the site as and when received and edited.

And, where applicable these will cover topics of interest to readers throughout South Africa (the magazine will continue to focus on the interests of smallholders in and around Gauteng).

Because lead times in the printing and delivery process mean that the paper version is only available at our physical distribution points about a week to ten days after it is finalised for printing we have long been able to offer an electronic version on the website much earlier than the printed equivalent.

The new development, however, enables us to carry items as they happen ~ which can be anything up to three weeks before the printed magazine is distributed.

This is of particular importance to organisers of events, shows, training courses and seminars, etc, who often find that the time between giving us their information for publishing and the date of the event means that readers have insufficient time to plan their diaries, book and attend.

The site also carries a national list of farmers' markets and events of interest to our readers, searchable by province.

Plus, there is a simple link to our associated on-line classified advertising site, the SA Small Farmers Online

Exchange, sasfox, (a single click takes you from the Smallholder site to the sasfox site, while should you visit the sasfox site first, a single click will take you to the Smallholder site).

The Smallholder site also contains a useful clickable resource list of forms, booklets and articles covering a wide variety of topics of use to smallholders. These are free to download as desired.

Ample advertising opportunities exist for companies wishing to promote their goods and services to the smallholder community online, at rates far lower than those in the printed magazine.

To make it easy for potential advertisers on the site (and in the magazine itself) there are new online booking and enquiry forms which makes the process of placing an ad, and having suitable artwork made up, painless and straightforward.

Like for our magazine advertisers we offer a free design and production service for advertisements on the website.

Users of the website are encouraged to contact us with comments and queries, for which there is a simple-to-use online email enquiry form.

Our electronic offering is completed with our Facebook page, which is used to notify Facebook followers of events, developments and new snippets as they occur. Items are posted on our Facebook page frequently, and a healthy level of debate and enquiry by followers is to be found.



facebook.com/gautengsmallholder

WATER IS OUR BUSINESS

We carry the widest range of pumps and fittings for all your requirements

- Borehole Testing & Certificates
- Dewatering of Dams & Pools
- Installations of Borehole pumps & Garden Irrigation
(Phone for Quotation)
- We now stock **Solar Pumps, VSD Drives, Water Tanks and Water Harvesting**

Borehole testing up to 100 000l per hour. Borehole inspections can be done with latest camera technology.



011 660 7824

TECHNOLOGIES

amanti

mark@amantitech.co.za

www.amanti.co.za

67 Commissioner street, Krugersdorp
(opposite Action Ford)

GPS **26°06'07"S, 27°46'20"E**

Consultations on ALL your water problems

FIRE SEASON

We help you through winter's veld fire dangers

By the time you read this the last rains of summer will probably have fallen in Gauteng and the grass will be turning a universally dry pale brown. And somewhere, hopefully not close to your plot, some idiot will toss a lit cigarette butt into the veld, or a scumbag neighbour will take it into his head to set fire to his field, and the Highveld horizon will become sullied with smudges of thick, black smoke from winter veld fires.

Why grass fires are bad ~ and illegal ~ and how to prevent them. All the resources you need to prepare for the dry winter ahead are readily available to you. Here's where to find them...

This annual blight upon our landscape can ~ and should ~ be prevented and you should take note that it is up to you, as a Gauteng land-owner or land-occupier, to do so.

For long-in-the-tooth smallholders and longtime *Smallholder* readers this should be old-hat, as we publish articles annually on the subject of grass fires and fire management, but for new smallholders, and for those that took no precautions last year and suffered the consequences, here, in summary, are the reasons why winter grass fires are unneces-

sary, destructive and illegal, with pointers to articles and documents that you can call up for further study. These are contained in a series of articles we have published over the years which are housed for easy reference on our newly-revamped website, with links provided where appropriate. You can open the articles and documents to read online or you can download them to read and refer to at your leisure.

☐ **Why are winter grass fires bad?** Contrary to the traditional view that an annual burning and blackening of the veld is a good

thing, numerous studies have shown that, in fact, the contrary is true.

~ Fires kill wildlife, in the form of rodents, termites, reptiles and insects that call your field home, and form an important part of your micro-environment.

~ Fires destroy the balance of the environment. Not all species of flora growing in a specific environment are adapted to annual burning and as a result these are destroyed and eliminated after repeated burns, with the result that only the most fire-hardy species survive in the long term, meaning a reduction in biodiversity.

~ Fires change and destroy the balance and composition of your soil. The ash from repeated burnings acidifies

Continued on page 11



Top quality pure frozen mince
BEEF OR CHICKEN
DELIVERED TO YOUR DOOR
Minimum Order for Home Deliveries: 1 case = 16kg
072 838-0552
ronaldc@polka.co.za

FIREBEATERS



LEAF RAKES
HOT MAY DEALS
JUMBO BAGS @ R65 EA

PLUS
BRICKS * SAND * STONE
CEMENT * HARDWARE
& MUCH MORE

B-HOUSE HARDWARE
C/o Garsfontein Rd & Blesbok St, Mooikloof Pretoria East
Tel: 012 480 0088
Cell: 082 558 9722
www.b-house.co.za
Email: sales@b-house.co.za
Open: Mon - Fri: 07:00 - 17:00
Saturday: 07:00 - 13:00



B HOUSE HARDWARE
Mini & maxi loads of Building Materials

BREDELL SAND
EXCELLENT SERVICE | SAME DAY DELIVERIES | COMPETITIVELY PRICED

PRODUCTS	SERVICES
Suppliers of top quality aggregates & organics.	SITE CLEARING & RUBBLE REMOVAL
<ul style="list-style-type: none"> RIVER SAND PLASTER SAND BUILDING SAND STONE G5/G7 FILLING DRIVEWAY ASH TOPSOIL COMPOST LAWNDRESSING COBBLE BRICKS 	DEMOLITION
	COMPREHENSIVELY INSURED TREE FELLING
	TLB HIRE
	TIPPER HIRE
	WATERCRAFT HIRE

Wesley 083 648 6283

AFRI-CA IMPLEMENTS BOTHAUVILLE

Tough & Dependable Machines
Ideal for a Smallholder

Hammermill
Petrol, diesel or electric
Belt drive, 3 sieves,
Mild steel blade is easily replaced. Mills **ANYTHING!**

Feed Mixer
Single phase electric motor
300 litre bin

Dropside Farm Trailer
1,9 ton capacity
Pneumatic wheels

Call Pieter
056 515 4380
piet7@africaimplements.co.za
Visit our website: africaimplements.co.za

Used Tractors Also Available

CONVENIENT ONE-STOP COUNTRY SHOPPING

GROENVOER

Feed • Vet Products • Saddlery • Gumpoles • Buckets • Bins • Brooms • Chicken feeders & drinkers
Fodder • Eragrostis • Lucerne • Oat hay • Teff • Country Markets • Groom Training • Farm stall delights



13 May • Mother's Day • Connections Forever



GROENVOER Premium Quality Animal Feed



- Always Available, Always Freshly Mixed
- Formulated for SA conditions
- Organic preservatives
- Direct from factory to feed room

Horse Feed is our Speciality

MAY 2018 SPECIALS!

Thelly's MSM
Supplement 1kg

R150
Save R69.50



Dog blankets

1m x 1m
R30
Save R7



Equimax Dewormer Paste - 7.49g

R80 - Save R50



Basic Winter Blankets
Grey inner, canvas outer
Sizes: XS - XL

R670 - Save R200



Sugar Beans 5kg &
Samp 10kg Combo

R159
Save R44.70



Grain SA/Grain SA
NAMPO
OESDAG HARVEST DAY

15 - 18 May 2018 • Bothaville

5% DISCOUNT on Expo Sales!

Present this ad at Stand 35 Caltex Hall,
and get 5% OFF on our Expo Sales



PROUDLY PRESENTING THE
SA GRASS ROLL SAVER!

- Recoup cost within months
- Comfortably holds 1.2m grass roll
- Only needs two people for easy loading
- Long Lasting
- Money saving
- Galvanised

SA PATENT
NO. 2012/05600
SA REGISTERED DESIGN
NO. A2012/01178 & F2012/01177
Infringers will be Prosecuted



"We all love our SA Grass Roll Savers – both horses and humans!
The hay stays fresh and clean for longer as it's off the ground and
not getting trampled on or wet. This has stopped a lot of wastage
and alleviates the necessity to put new hay out every day for
Tamarillo (TB) and Karma (Clydesdale)."

NIKKI & MELISSA AITKEN • SUMMERVELD, KWAZULU-NATAL

Stockists of:



ORDER TODAY!

Speak to: Cathy, Irene,
Jenny & Philenie

011 314 1211 082 545 9277
011 314 1212 076 451 7771
011 314 1156 076 451 7799
email: groenvoer@mweb.co.za
web: www.groenvoer.co.za

Address: Olifantsfontein Rd (R562), Midrand, Gauteng, SA



BLANKET WASHING

Quick,
thorough &
affordable

All prices Vat inclusive E&OE - Generator power - No outages



**GREAT DEALS ON PROFESSIONAL
HIGH-QUALITY ITALIAN MACHINES**

COMBO DEAL

NOW
R5730
ex VAT
~~R8999~~



OM 741

21 hp - 16 kW
40.2cm³
7.8 kg

GS 35

2hp - 15 kW
16" - 3/8 x 0.505"
4.6 kg

OM G48PK COMFORT PLUS

46cm deck
140cm³
4-stroke

NOW
R3799
ex VAT
~~R4699~~



GS 35

2 hp - 15 kW
16" - 3/8 x 0.505"
4.6 kg

NOW
R1999
ex VAT
~~R2399~~



BV 300

1.3 hp - 1 kW
30 cm³
4.5 kg

NOW
R3199
ex VAT
~~R4699~~



CHAINSAW

GL5200
52cc

R1349
ex VAT



POWER SPRAYER

PS3WZ-36L-300
4 Stroke, 6.5hp motor
300L tank
Return agitator valve

R11999
ex VAT



BRUSHCUTTER

BCCG430- B Style
Grass blade
Nylon head
Toolkit

R1999
ex VAT



EARTH AUGER

EAG4300
43cc
FREE 200mm bit included

R8700
ex VAT



SHREDDER

SS1002
6.5HP
76mm branch capacity

R2999
ex VAT



GENERATOR

RG63400 : Petrol
3kw max
2.6kw cont

R1499
ex VAT



WATER PUMP

GP25-2 : 1" pump
40cc
7800 L/hr

R1725
ex VAT



Ts&Cs apply. While stock lasts. Actual product may vary from pictures.
E&EO permitted. Valid until 31 May 2018

FIRE SEASON

The National Veld & Forest Fires Act makes landowners and occupiers responsible for preparation against fires, and for fire fighting if emergencies arise ... and penalties can be severe if compliance is neglected

From page 8

your soil, and the flames destroy dry plant material lying atop the soil that would otherwise decompose and become humus in your soil. As a result the soil compacts, preventing or discouraging plant emergence and discouraging the absorption of moisture.

~ Fires cause air pollution, by releasing large quantities of carbon dioxide into the atmosphere, thereby, in a small way, contributing to global warming. Smoke, too, is dangerous to people and animals with sensitive respiratory systems, apart from causing unnecessary dust.

~ Fires are destructive of value. When you burn a patch of veld you destroy not only the grass growing there, which has a tangible value as grazing or, if cut and baled, as fodder, but you also run the risk of destroying any man-made infrastructure which has been installed, such as fencing, pipework, pumps, greenhouses, beehives etc. More importantly, you run the risk of destroying the infrastructure of your neighbours' properties, through which the fires might pass if they get out of hand. And that can cost you big-time.

~ Fires are illegal. The National Veld & Forest Fires Act lays down specific provisions relating to the responsibilities of landowners and occupiers relating to preparing for the fire season (ie the making of firebreaks), the prevention of fires (ie ensuring vegetation is cut and cleared) and responsibilities relating to the provision of firefighting equipment, training of personnel in its use and access to neighbouring properties and

control over neighbours' livestock in the events of a fire. Access the act here: gauteng-smallholder.co.za/wp-content/uploads/2018/04/National-Veld-and-Forest-Fires-Act-No.-101-of-1998.pdf.

In addition many municipalities have by-laws that make the burning of grass, brush and rubbish illegal, with the result that you could be prosecuted by your local authority for allowing your fields to go up in smoke.

As a responsible landowner or occupier, therefore, you should have your own fire preparation, prevention and emergency response plan in place which, in a spirit of good neighbourliness, should preferably be a community or neighbourhood effort.

Fire preparation. This involves the clearing of firebreaks, the removal of combustible material and the acquisition of firefighting apparatus suitable for your conditions. It should also include the cutting and clearing of the verges surrounding your property as, although you don't own the land, many runaway fires are started on verges by careless passersby, which can quickly spread to your property. Read more on this subject at www.sasmallholder.co.za/fq/.

Fire prevention also includes preparing within your property to prevent damage to piping, fencing etc, in the event of a fire.

Read about how to make firebreaks, whether by burning or ploughing (and the pitfalls and benefits of the two methods) here www.sasmallholder.co.za/fq/,

Continued on page 13

Your Preferred Supplier of Agri-equipment, Spares & Consumables

- Herbicides, Pesticides,
- Poisons & Baits,
- Veterinary Pharmaceuticals
- Veterinary Equipment

In pack sizes suitable for smallholders!!

More than 100 years' experience

Agent for



BENFARM
 65 Unity Ave, New Modder, Benoni Tel 011 423-2801
 Ronnie 082 900-5400 Sales & Spares 074 362 6696
 Admin & Accounts 072 740 9102
 email 20ness@mweb.co.za Website coming soon!

TEL: 012 653 8342/8 or 083 269 0389

Email: dennismow@mweb.co.za

Unit 9 Miracle Park, Lenchen Ave

Ext off Old JHB Road CENTURION

GPS: 25°52.753'S, 28°9.635'E

EAST RAND: 011 730 3400

VALID UNTIL END MAY 2018



SERVING THE PUBLIC FOR 22 YEARS

TUFFKING

Industrial Heavy Duty
Lawn Mower

With: POWER PRO 15 hp Engine

WAS: R22,000
NOW: **R17,250**
Excl. VAT



Trailing Seat

R2,750
Excl. VAT

Cub Cadet

Ride-on Lawn Tractor
38" / 7.8 kW / 420 cc

TRANSMATIC

WAS: R39,250

NOW: **R27,500**

Excl. VAT

HYDROSTATIC

WAS: R42,125

NOW: **R29,500**

Excl. VAT

HYDROSTATIC with
Rear Grassbox

36" / 7.8 kW / 420 cc

WAS: R42,700

NOW: **R30,500**

Excl. VAT



Stillette

Garden services choice!

Buy direct and **SAVE!**

ALL PRICES EXCL. VAT

25.4 cc Hand Held Blower

Optional Extra:
Vacuum Bag



WAS: R2,475

NOW: **R1,735**
Excl. VAT

Backpack Blowers



51.7 cc WAS: R4,400 NOW: **R3,080**
Excl. VAT

63.3 cc WAS: R4,800 NOW: **R3,360**
Excl. VAT

82.4 cc WAS: R5,450 NOW: **R3,815**
Excl. VAT

Backpack Mist Blower

40 cc, 0.75 kW
26 Liter Chemical Tank

HURRY, SELLING FAST
SAVE MONEY & YOUR CROP!

NOW ONLY: **R2,600**
Excl. VAT

WAS: R4,400

Ideal for
Spraying
against
pests in
Green-
houses,
tunnels,
etc.



82.4 cc, 4 kW / 5 hp
20 Liter, Chemical Tank

WAS: R5,250

NOW: **R3,675**
Excl. VAT

Nylon Line 2 Kg, Any size

12 Rolls
per box
delivery
Gauteng
Add: R150



WAS: R407

NOW: **R205**
Excl. VAT Per Roll

2-Stroke Vert. Engines



122 cc
2.7 kw,
3.6 hp
WAS: R3,276 NOW: **R2,520**
Excl. VAT

4-Stroke Vert. Engines



118 cc
3.3 kw,
4.3 hp
WAS: R2,139 NOW: **R1,645**
Excl. VAT

4-Stroke Vert. Engines



173 cc
4.5 kw,
6 hp
WAS: R3,218 NOW: **R2,475**
Excl. VAT

4-Stroke Horiz. Engines



212 cc
5.25 kw,
7 hp
WAS: R2,139 NOW: **R1,645**
Excl. VAT

4-Stroke Horiz. Engines



440 cc
11.25 kw,
15 hp
WAS: R4,680 NOW: **R3,600**
Excl. VAT

Hedge Trimmers



22.5 cc
600 mm
Cutting width
WAS: R3,050 NOW: **R2,135**
Excl. VAT

Concrete Poker / Vibrator

37.7 cc, 1 kW/6500 rpm, 4-Stroke

WAS: R3,335 NOW: **R2,335**
Excl. VAT

NEW!

Straight Shaft Brush Cutters

32.7 cc WAS: R2,300 NOW: R1,610	42.7 cc WAS: R2,520 NOW: R1,764
51.7 cc WAS: R2,850 NOW: R1,995	63.3 cc WAS: R5,250 NOW: R3,675

All Prices Excl. VAT

63.3 cc Earth Auger

Twin handle operation with 100 mm Auger Bit

150 mm - **R3,395**
200 mm - **R3,780**
250 mm - **R4,200**

Save Time & Money

WAS: R4,600 NOW: **R3,220**
Excl. VAT

25.4 cc Portable Drill

0.8 kW / 1.7 hp / 7500 rpm

WAS: R3,750 NOW: **R2,625**
Excl. VAT

Chainsaws

50.8 cc WAS: R3,100 NOW: **R2,170**
Excl. VAT

72.2 cc WAS: R5,500 NOW: **R3,850**
Excl. VAT

Push Brush Cutter

42.7 cc, 1.35 kW

WAS: R4,000 NOW: **R2,800**

Opt. Extra: 3rd Wheel

163 cc Water Pumps

Strong Frame! 2" & 3"

2" WAS: R2,915 NOW: **R2,040**
Excl. VAT

3" WAS: R3,000 NOW: **R2,100**
Excl. VAT

Multi Tool

32.6 cc

Power Unit with all 4 incl.

- 1). Nylon Head,
- 2). Pole Pruner,
- 3). Hedge Trimmer
- 4). Lawn Edger

WAS: R7,200 NOW: **R5,040**
Excl. VAT

27.2 cc Pole Pruner

Overall Length: 3 - 4.3 m

WAS: R7,700 NOW: **R5,250**
Excl. VAT

480 mm Push Mower

With 430V Engine

118 cc, 3.2 kW
Steel Pressed Deck

WAS: R5,700 NOW: **R3,990**
Excl. VAT

Floor Sweeper

800 mm Operational width
2 Rotary Brushes

WAS: R3,625 NOW: **R2,538**
Excl. VAT

PRICES PER UNIT, EXCL. DELIVERY F.O.R. NIGEL & VAT. VALID FOR COD PURCHASES ONLY. WHILE STOCKS LAST. ILLUSTRATIONS MAY DIFFER. E&O.

FIRE SEASON

From page 11

which also includes advice and tips on how to ensure that your firebreaks are wide enough to prevent fires from jumping from one field to another.

On smaller plots it may be impractical to prepare a full-width 15m wide firebreak without encroaching too far into any remaining grazing you may have, and there is a suggestion given whereby you can share the full width of the break with your neighbour. You will also need to know your legal rights and responsibilities if you wish to burn breaks. Refer to the act above.

To have a fighting chance of containing a fire on your property you not only need to ensure adequate firebreaks themselves, but you need to cut and remove any tall grass from the centres of your fields. This is particularly true

Selling the grass that you have cut, raked and baled as a fire-prevention exercise may actually cover the cost of the job

if your firefighting equipment is limited to a couple of hoses, hand sprayers or firebeaters.

Cutting, raking and baling any excess grass in your field (not all smallholders' land is overgrazed, particularly those that don't house livestock), rather than being a nuisance and an expense, is not only a good safety measure fire-wise but the trouble taken to cut, rake and bale the hay in an unused field can be offset by selling the resultant bales to neighbours as B-grade fodder, if you have no use for it yourself.

☐ **Fire fighting.** In the unfortunate event that a fire is started in your field, or jumps a firebreak from an uncleared verge or is driven on to your

property by a strong wind, your worst nightmare has just arrived.

While the National Veld & Forest Fires Act puts an onus on neighbours to help each other to fight fires by providing labour and equipment, you can't rely on them to do so and the law anyway makes it your responsibility to provide sufficient working fire fighting equipment to do the job; and more importantly, to train your family and personnel in its effective use. What this equipment comprises will depend to a large degree on the nature of your vegetation, the size of your property and the terrain, but can range from hand-held rubber firebeaters (more useful for containing small

flames when burning controlled breaks and only effective in an emergency situation if the burning grass is cut short, and then only if there are sufficient numbers working in unison), to hand-operated backpack sprayers, motorised backpack blowers, and trolley-mounted, bakkie-mounted or trailer-mounted high-pressure firefighting machines.

A full description of each type and its pros and cons is given at www.sasmallholder.co.za/fq/.

Continued on page 15



HIGHVELD HONEY FARMS
PROTECT OUR BEES

Visit our farm in Rynfield to get your honey at farm prices. Bring your own containers and we will fill them up - pay ONLY for the HONEY

Plot 185 Uys St, Rynfield AH, Benoni
Tel 011 849-1990
Weekdays 07:00-17:00
Saturdays: 07:00-13:00

Steyns

boerebenodighede

**Quality Seeds & Feeds
Guaranteed**



40KG EPOL RIDER PELLETS @ R195



40KG EPOL HERBIVORE ALL-IN-ONE @ R165

Receive 10% discount if you purchase any 10 items below

25Kg 50Kg

Sorgum	R125
Sunflower	R175
Oats	R80
Parrot Mix	R355

Mielies	R150
Sifted Crushed Mielies	R160
Mixed Fowl Food	R185
Layer Meal	R165
Wild Bird	R210



**OTHER PRODUCTS
IN STOCK**

Hominy Chop, Wheaten Bran,
Soya Oil Cake, Bulk Maize,
Sunflower, Wheat, Maize Meal,
Samp, Braaipap, Yellow Maize Meal

**TEFF SQUARE BALES @ R70-00
LUCERNE SQUARE BALES @ R80-00**

All prices include VAT. Valid till 19 May 2018. E&OE

**Delivery available, subject
to quantity and distance**

Krugersdorp (Mill)
4 Rustenburg Road
Krugersdorp West
011 953 1828 (Lettie)

Branches
Randfontein (Head Office)
29 Union Street
Randgate
072 783 9694 (Willie)

**Wholesale customers welcome
email info@steyngroup.co.za**

Carletonville
Beerster Street
Oberholzer
082 739 7427 (Kobus)

Quality Agricultural Equipment & Spares

-POWER-MOWER

MAJOR 
WWW.MAJOR-EQUIPMENT.COM

Major Swift 1,9m & 2,4m
Roller Mowers



**Blades,
Skids
& Bolts**



Slasher Spares

for ALL makes & models



**PTOs,
Components
& Spares**



**FULL RANGE OF
GROUND-ENGAGING
IMPLEMENTS
FROM
TOP BRANDS**

MONOSEM



RovicLeers
Leading Farming Technology

SOUTH-TRADE
IMPORTERS & DISTRIBUTORS OF AGRICULTURAL MACHINES



Landini

McCORMICK

Also stocking these fine brands



TIGA
Lawn Tractor

Swedish quality
14kW Briggs &
Stratton engine
106cm cut



Landini Solis 20,
13kW 4-WD Tractor

-POWER-SPRAYER



GRASS HOPPER
IT'S SO MUCH MOWER



Landini Solis 50,
35kW 2-WD
Tractor



RTS 13000LB
4x4 Winch Kit

WORKSHOP NOW OPEN

We REPAIR:
Tractors
Implements, Mowers,
Chainsaws, Brushcutters
etc, etc

**1 West Street
Boksburg East**

Tel: 011 914-1922

Fax: 011 914-1923



Pieter Visagie (snr)

082 616-8060

pieter@reapersagri.co.za

Pieter Visagie (jnr)

076 423-9860

sales@reapersagri.co.za

SMART SMALLHOLDER



Hampshire Down sheep in Randfontein

Rare sheep breed on Randfontein plot

One of only a handful of breeders in South Africa of Hampshire Down sheep, 18-year-old Sameshni Reddy and her family were originally drawn to the breed for their aesthetic appeal, having acquired their 5 hectare Randfontein plot as recently as 2013.

After some experimentation with sheep, Sameshni noted the teddy-bear like qualities of the Hampshire Downs. They are short and stocky in stature with thick wool. Their defining characteristic is their "panda" faces, with black rings around their eyes. Upon further investigation, Sameshni discovered the breed is highly sought after by world-class chefs for their high quality meat. Television celebrity chef Gordon Ramsay is said to favour the Hampshire lambs for his

restaurants.

The wool is also extremely high quality and can reach up to 33 microns. It is used extensively in textile manufacturing, most notably in the manufacture of woollen hosiery.

The Reddy family currently have 18 stud quality Hampshire Down ewes and a registered ram. Having started her stud when she was only 17, Sameshni has been registered with the breed society as Jessam Stud and is trading as Jessam Hampshire Stud under the stud code JS – taken from the first letters of her and her younger brother Jeshlen's names.

A stud quality Hampshire Down must fit the characteristics assigned by the Stud Book. These include the shape of the face, the

Continued on page 16

FIRE SEASON

From page 13

But, before deciding what to buy it is worth knowing something about the nature and science of grass fires, particularly when training family and staff in the use of equipment (www.sasmallholder.co.za/fq/).

And if you are looking at tank-type water equipment

(backpack sprayers or high-pressure motor-driven units) there is a simple mixture of chemicals you can use that will make your equipment very much more efficient than if you rely on plain water alone to extinguish the blaze. The mixture and how to use it is also given at www.sasmallholder.co.za/fq/.

Budgies 2 Bantams

Breeders, Buyers & Sellers of Exotic Poultry & Small Stock Animals

Breeders of over 50 breeds of poultry

NOW IN STOCK

Coops available

for large & small gardens

Keep your chickens & bunnies safe from predators... keep your garden safe from your pets

Muscovy Ducks

Cages include egg retrieval gate for **FRESH EGGS DAILY**

Black Australorps

Montego & Bow Wow dog food

Mixed Fowl Starter Mash
Whole Mielies
Growing Pellets
Laying Pellets
Growing Mash
Budgie Seed
Sweetfeed

We Hand-rear AFRICAN GREYS

Unique Farm Pet Shop

Aviaries, Cages, Pet accessories: Dog leashes, Shampoo, etc.

Only 20 min drive from PTA CBD & Fourways on the M26 (Main Road/Erasia)

Open Sundays & Public Holidays
By appointment only

info@budgies2bantams.co.za
www.budgies2bantams.co.za

Mohamed 082 379 1555

(Owner: complaints/queries)

Raees (sales/buyer)
079 692 0542
082 689 0287

We accept all major Credit or Debit cards

Proud sponsor of the Southern African Show Poultry Organisation

Specialists in Exotic Poultry

SMART SMALLHOLDER

From page 15

markings on the face and legs and the length of the legs. In South Africa, the Hampshire Down is of the short legged variety. Their counterparts in the USA have longer legs. The Stud Book and breeders also prefer their animals to have docked tails, both for hygiene and aesthetic

reasons.

Over the last year, Sameshni has learned a great deal about the breed. They are excellent mothers, often giving birth to twins. They are very protective mothers.

Lambs are born around 3 to 5kgs. They are born black and will reach their final white colour at around three months old. She finds that the lambs mature at a quick pace. She weans her lambs at 120 days, although she knows of other breeders who do so earlier. At weaning, the lambs are around 35kgs.

The Hampshire Down reaches sexual maturity very young. Sameshni starts them breeding at 18 months but she is aware of breeders who do it as early as eleven months.

Sameshni has had no problem breeding her stud ram with her ewes. The Hampshire Down breeds easily naturally and has a high yield each



Randfontein smallholder Sameshni Reddy with her Hampshire Downs.

season, although progesterone sponging and artificial insemination are also highly successful in the breed.

Sameshni gives her stud ram between March and April to run with her ewes.

Spring births are best for stud quality sheep. This allows the mother an adequate environment to return to a good condition while nursing.

She believes the Hampshire Down is ideal for the conditions of Gauteng plots. They are hardy and generally resistant to illness. They cope well in rainy conditions,

probably owing to their English-countryside origins. They also fare well over the dry winter months, with only a little supplementary feeding required.

Sameshni uses Lucerne and Japanese radish for added fodder to optimise nutrition. The Reddy family grow both of these crops on their property to lessen the cost of food.

Sheep in general are easily contained and require small to medium sized pastures for grazing.

Continued on page 17

Clovelly

- Day-old commercial Rhode Island Reds
- Layers for free-range & cages
- Sexed 1st grade brown pullets @ R17ea

Delmas
083 393 0935

SOLARLIGHT.CO.ZA
✉ phasor@telkomsa.net
☎ 082 357 0015
🌐 www.solarlight.co.za

VS

WATTS
(ENERGY USED)

Traditional Bulb
(10lm/watt)

40W (1 ~ 400 lumens)
60W (500 ~ 800 lumens)
75W (900 ~ 1100 lumens)
200W (1200 ~ 2000 lumens)

LUMENS
(BRIGHTNESS)

Solar powered LED lights
(135lm/watt)

2-5W (270 ~ 675 lumens)
6-9W (810 ~ 1215 lumens)
11-14W (1485 ~ 1890 lumens)
25W-30W (3375 ~ 4050 lumens)

SOLARLIGHT.CO.ZA Solar Security Lights
12 hours/night for up to 3 nights
Illuminate entrances, perimeters, barnyards & stables & residential areas. Also industrial areas, construction sites, parks, schools etc
Because sunlight is free

ANKER FEEDS + SEEDS (Pty) Ltd t/a
CAMPO
Seeds & Feeds
Animal & Avian Feed & Seed Wholesalers
Your 1-Stop Shop for all Fur, Feather & Fin Requirements

Campo's Housebrand Dog Food
Perfect for every dog and his mate

10kg @ R95
5kg @ R46
2kg @ R19

25kg now only R210-00
while stocks last (Ts & Cs apply)

18 Barratt Road
Factoria
Krugersdorp
info@campofeeds.co.za
www.campofeeds.co.za
011 955 1819

Cardboard Day-Old Chicken Boxes

Box It Up

No customer is too big, too small or too far
Boxes do not require staples
Sturdy design

Elaine: 072-643-9132 BIU.ZA@yahoo.com



Aww... cute... Teddy-bear like looks of the Hampshire Down sheep

From page 21

The Hampshire Down in particular adapts easily to smaller properties provided the nutrition of the animals is catered for.

The Hampshire Down is a very docile breed with a lovely temperament. They are not aggressive. Their size makes them ideal for families concerned for the safety of

small children.

The Hampshire Down Breeders Association of SA ~ currently chaired by Janine Leimer ~ has been hugely helpful to this new member. Sameshni makes particular reference to Dr Daleen Roos of Vrede, who has been on hand at any time with advice. Having bought a number of animals from Dr Roos at the

SMART SMALLHOLDER

start of this venture, Sameshni stayed in contact and has been overwhelmed by the support and assistance Dr Roos has provided.

"There are only a few breeders in South Africa ~ less than 15. It is a very close-knit community and everyone has been helpful and welcoming. People are always willing to answer questions or offer assistance," Sameshni says.

Due to the small number of these animals in South Africa, there is also continual communication within the Breeders Association to prevent in-breeding beyond what is considered safe for the animals.

Sameshni has looked into importing semen from Australia and New Zealand in an attempt to add new genes into the existing South African bloodlines. The Dept of Agriculture has very strict controls over the importing of

semen to avoid the import of diseases such as scrapie, which is most prevalent in Europe.

Because of their stud quality, Sameshni has also received assistance from qualified animal nutritionists who have made suggestions for keeping her sheep in the best condition.

At the recent Walkerville Show, Janine Leimer commented on the excellent condition of the Reddy's sheep. "That was a huge compliment, coming from a leader in this field," said Sameshni.

Continued on page 19

**Vierkantige
hawerbale**

Tekoop R35

**Grootmaat pryse
onderhandelbaar**

Randfontein

011 416 3306 083 313 6510



Wendy House Centre

Save with our monthly promotions

Wendy House Centre is proudly the only manufacturer of "Rock Hard" products in South Africa.

Our "Rock Hard" Wendy Houses bring you practical, quality and solidly built wendy houses which require virtually no maintenance.



Suppliers of:

- ★ Tool & Storage Sheds
- ★ Wendy Houses
- ★ Play Houses
- ★ Guard Houses
- ★ Pet Houses



Why buy from Wendy House Centre?

- ★ High Quality - Neat & Tidy
- ★ Low Maintenance - 3-5 yrs
- ★ Quick delivery - sizes in stock
- ★ Unsurpassed - customer service

75 Main Road (R55), Crowthorne, Kyalami
Ph: 011 702 3253 / 011 702 3305 Email: info@whcsa.co.za; www.wendyhousecentre.co.za

"ROCK HARD"® WENDY HOUSES

SMART SMALLHOLDER

From page 17

To keep them in their best health and condition, the flock undergoes an intense deworming, vaccination and anti-tick programme.

The family built their own dip tank through which they funnel the flock on the way out to the pasture, as often as once a week in summer, to prevent tick-borne diseases. They change the brand of dip used often to prevent the building of resistance in the ticks.

Sameshni uses a template provided by Dr Roos to keep track of everything about her flock ~ vaccinations, deworming, breeding, lambing, shearing etc.

A lamb born or new animal purchased is tagged and registered. Note is made of the sire and mother. This helps maintain clear records of the growth and development of her flock and the breed as a whole.

Like so many smallholders, the Reddys use what is available to them to improve

their facilities.

They have paid careful attention to making their facilities as easy to use as possible.

Most of their equipment can be used by one person alone, so Sameshni can tend to the flock on her own if need be. Their dip tank is easily set up by one person.

Their loading ramp is lightweight and can be lifted by one or two people. This ramp also doubles up as an isolator, allowing them to corner a sheep that needs special attention.

Slow feeders made out of old wooden pallets preserve feed for smaller lambs.

Sameshni's father Sivan used gate frames and wire to create portable pens for the flock. Sivan says "We use what we can find on the plot. We try not to buy new materials where possible." And of course, in keeping with the smallholder way of life, the Reddys have learned

Continued on page 21



Dipping tank for regular dipping against ticks

Borehole Drilling



Throughout Gauteng

- **50 years' experience**
- **Modern, powerful equipment**
- **Prompt, reliable service**
- **Best rates and advice**



AND: We can arrange your associated requirements, eg: borehole siting, pump installation, piping, electrical work, etc.

Lanseria Drilling

BOREHOLES - DRILLING & REPAIRS

076 727-6464

082 552-6071

011 957-2588

"Serving the public since 1932"

TURFMASTER

(PTY) LTD



Email: info@turfmaster.co.za
Website: www.turfmaster.co.za
turfmasternigel.blogspot.co.za

Please contact us for nearest dealer

Head Office: East Rand
Tel: 011 730 3400

Centurion
Tel: 012 653 8342/8

Bellville
Tel: 021 945 4106/7

Port Elizabeth
Tel: 041 581-8443/4

Durban
Tel: 031 701 8233

Nelspruit
Tel: 013 492 0490



Cub Cadet

36" Ride-On Lawn tractor with Rear Grassbox



Ground-breaking Tillers



38" - 42" Ride-On Lawn Tractors



46" - 54" Ride-On with Fabricated Deck



42" - 54" Zero-Turn Ride-On Mowers



Grass Catchers



Ride-on Trailers



Professional Heavy Duty Rotary Mowers

More than 36,000 units sold. Used by most Municipalities.

Beware of imitations - Buy a Genuine Kudu



Trailing seat optional

Available from the following Stockist Dealers:

Boksburg	011 918 5771
Brits	012 252 2559
Centurion	012 653 8342
Klerksdorp	018 462 1612 018 462 4158
Krugersdorp	011 955 3610
Lichtenburg	018 632 6347
Meyerton	087 310 2670
Potchefstroom	018 294 3664
Pretoria Central	012 323 2053

Pretoria North	012 548 4422
Pretoria	012 997 0464 012 323 2053
Roodepoort	011 955 3610
Rustenburg	014 597 3315
Sasolburg	016 976 7777
Standerton	017 712 1145
Vanderbijlpark	016 933 3899 016 933 9492
Witbank	013 692 7400
Welkom	057 353 2701

Engine Options:

KOHLER



HONDA

YAMAHA

Nylon Line

Japanese Technology Made in Japan



MARUYAMA

Still the BEST warranty in the Industry!

World's STRONGEST Blower!

Backpack Blowers

Pole Pruners

Chainsaws

Hand Held Blowers

Hedge Trimmers

Mist Blowers

Brush Cutters

Granular Spreaders

Battery Sprayer

2-Stroke Oil

- Over 60,000 sold to date!
- Ekurhuleni Municipality bought 2500+ units!
- Best selling 50 cc Brush Cutter in SA!

Available from:

Benoni	011 395 2648
Brits	012 252 2559
Centurion	012 653 8342 012 663 3313
Kimberley	053 832 4751
Klerksdorp	018 462 1612 018 462 4158
Lydenburg	013 235 2115
Meyerton	087 310 2670
Parys	056 811 4383
Potchefstroom	018 297 0816 018 294 3664
Pretoria East	012 800 1450
Rosettenville	011 434 3424
Sasolburg	016 976 7777
Springs	011 811 5067
Vanderbijlpark	016 933 3899
Waterval	012 545 4067
Witbank	013 692 7400



SCAG
POWER EQUIPMENT

48" - 72" Zero-Turn Ride-On Mowers

Municipalities using Scag Zero-Turn Mowers:

Ekurhuleni, Elias Motsoaledi, Tlokwe, Polokwane, Ethekwini, Umhlathuze, etc.

Available at: Turfmaster Branches, Klerksdorp: 018 462 1612 & Warmbad: 014 736 3793

Engine Options:

KOHLER

Kawasaki



Kubota Diesel



600 mm cut

ESTATEMASTER
600 mm Three Wheeler

Engine Options: **Kawasaki**



KOHLER

HONDA

Available from Turfmaster Branches
Boksburg Lawnmower Ranch 011 918 5771

SMART SMALLHOLDER

From page 19

from trial and error.

Where possible, the family tries to resolve issues on their own. For example, they have discovered that a sheep suffering from bloat can be easily cured with a spoonful of cooking oil. Likewise, a sheep that swells after deworming, indicating the presence of parasites, can be effectively treated with apple cider vinegar.

But it has not all been smooth sailing. Sameshni recently lost a stud ewe to stock theft on a quiet Saturday afternoon. They have also had challenges in dealing with the local Randfontein Municipality and Dept of Agriculture. As previously disadvantaged members of the community, the Reddys have applied for assistance in ploughing fields, setting up vegetable tunnels and drilling boreholes in keeping with the

'But it has not all been smooth sailing. Sameshni recently lost a stud ewe to stock theft on a quiet Saturday afternoon.'

Dept of Agriculture's promise to help emerging farmers. All requests have been met with little to no response, despite months of back and forth. So any development on the property has been due to the family's determination and hard work.

The future looks promising for Sameshni and her sheep. The family hopes to begin breeding for meat ~ those animals not registered as stud quality will be slaughtered. They have also received a number of enquiries from people in the Islamic community interested in the breed for religious ceremonies and believe there could be a niche market there. Like so many smallholders,

the property sustains a number of growing projects. Sameshni's mother has an interest in weaving and spinning. She hopes to build a small arts and craft centre on the property, using Hampshire Down wool to teach local women about spinning and weaving.

Sameshni's younger brother farms small crops of vegetables on the property and has had some success selling produce at the Johannesburg Fruit & Vegetable Market. The family also makes and sells jam from the small orchard on the property. In many ways, therefore, the Reddy's property is the quintessential plot ~ with projects constantly growing

and changing and new ventures starting.

For smallholders across the province, young Sameshni is an inspiration. With passion and hard work, she has been able to grow a beautiful looking and high standard flock of Hampshire Downs. With the continued support of her family and the members of the Hampshire Down Breeders Association this young farmer is the future of smallholders in Gauteng.

 Find us on Facebook

FOR SALE
3 HA SMALLHOLDING
WEST OF CENTURION
Comprising
Main house, cottages, sheds,
outbuildings, offices, machinery,
equipment & vehicles.
INCLUDING
ESTABLISHED MFG COMPANY
with over 27 years' trading.
Rob 064 413 4668

UPGRADE TO A HONDA **Sprayers for Firefighting, Cleaning & Pest Control**

220 - 750 litre skid mounted sprayers 500 - 5 000 litre trailer units

60 & 120 litre trolley sprayers

MULTI **HOW IN STOCK** **Husqvarna**
Equipment, Spares etc

1 GRANT ST, NEW STATE AREAS, SPRINGS
TEL: 011 817-3044/84, 082 444-8952
FAX: 011 817-3063

www.mfpafrica.com
e-mail: carel@mfpafrica.com
rynhardt@mfpafrica.com

FIRE & POWER  

It's **Sheep Shearing Season!**
SHEEP SHEARING SERVICE
SKAAP SKEER DIENS

082 602 4462
082 878 5623



GUSTO PUMPS CC
Water Specialists

THIS IS THE SIGN FOR WATER MANAGEMENT

We supply and repair all
PIPES, FITTINGS AND TANKS,
SUBMERSIBLE PUMPS,
BOREHOLE PUMPS,
SWIMMING POOL PUMPS,
& PRESSURE SYSTEMS.
At the best prices!

We are experts in water management. Our prices are very reasonable and our service is the BEST!

 **Drilling**

 **Tanks**

 **Pressure Systems**

 **Submersible Pumps**

 **Borehole Pumps**

Tel 011 957 2588
Carina Krause
082 872 4143

POULTRY

What chickens see, feel, taste & hear

Birds, including poultry, have the same five senses that humans have ~ sight, hearing, touch, taste, and smell ~ but they are specialised to help birds survive.

Chickens see the same way we do: light comes in through the cornea and iris, then stimulates nerve endings in the retina at the back of

the eyeball. However, chickens see an extra sector of the light spectrum. We see three wavelengths (red, green and blue), but chickens see four: red, green, blue and ultraviolet. This means that everything that they see looks different from what we see. Their night vision however, is poor.

Chick embryos respond to light as early as 17 days after the start of incubation.

A hen cannot rotate its eye very much but they can see a field of 300°, with a binocular field of 26°.

Chickens also have much better motion sensing ability than we do. They can see the flicker in many fluorescent lights, (so do not use them in your coops).

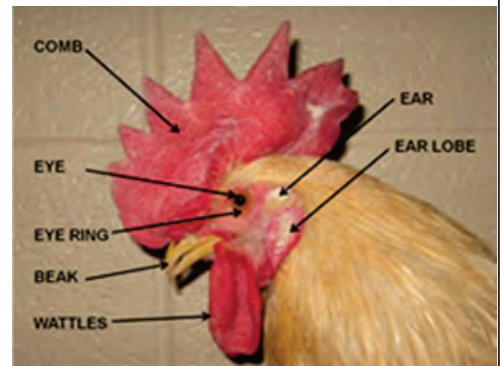
Chickens have two foveas (which are image enlargers) and they act a little differently.

One is for distant vision, and one is for in close, rather like bifocal spectacles are for humans.

The up close one is oval, and sideways, which is why, when you approach a bird, once you get to the focal distance of about a metre, birds will often bob their heads, and tilt their heads somewhat sideways to get the image better lined up on the second fovea.

Chickens actually can't reliably recognise flock mates until they are within about 60 cms.

Chickens have olfactory receptors in their upper jaw and can respond to particular scents, so they can and do



Features of the head of a rooster.

use smell to help make sense, and make decisions, about their world. Hens are not keen on food that smells of mould or is sour, so presumably smell is involved in this feed rejection. Chickens develop their sense of smell even before hatching - chicks are able to smell from inside their shells.

Hens don't have an ear lobe but they have a well-

Continued on page 23

BANG-A-LERT

NEW!! All-Steel version

Stop crime on your property
Affordable & Practical
More than 6 000 units sold in SA
Simple Installation
No Power Required
Dealer Prices for more than 10 units
Mason Engineering
083 611 2857
www.bangalert.co.za

MALLARD FEEDS

MANUFACTURERS & SUPPLIERS OF FEEDS & FODDER FOR ALL LIVESTOCK

Open 6 days a week
(including Saturday mornings)

NEW!

SUPPLIERS OF TOP BRANDS OF PET FOOD

Excellent Prices! Great Range!! Best Service!!

WE DELIVER!

Just a small selection of our product range

- Mixed Fowl** (Image of mixed feed)
- Mealies** (Image of yellow corn)
- Shavings** (Image of wood shavings)
- Round Bales** (Image of a round hay bale)
- Square Bales** (Image of a square hay bale)

WE STOCK PELLETED FODDER
Lucerne, Eragrostis & Teff

Montego Pet Nutrition

TipTop adult

Monty & Me

BOW-WOW Premium Raw Pet Diet

LeRoy BUFFET MIX

SPURWING HORSE FEEDS cc

59 Old Vereeniging Road, Kliprivier
or call 071 893 1384

From page 22

developed ear. The opening of the ear is covered by a special tuft of feathers. These feathers protect the ear without impairing perception of sound. Like other mammals, birds have an outer ear, a middle ear, and an inner ear. Birds are able to perceive sounds more quickly than humans. They are able to pinpoint the source of a sound by assessing the lag time between the sound's arrival at either side of the head.

Chicken embryos generally begin hearing on day twelve of incubation. When chicks are raised with a mothering hen, the hen helps the chicks identify foods by making

The practice of beak clipping among intensively-reared poultry is extremely painful to a chicken

specific sounds known as auditory clues. Chickens do have a sense of taste and have about 340 taste buds, mainly on the palate and floor of the oral cavity. (Humans have between 8 000-10 000 taste buds.) Only 2% of a chicken's taste buds are on the tongue itself. The rest are located at the back of the oral cavity, which means that by the time a chicken can taste what it's eating, it has already committed to swallowing it. They are rather indifferent to sugars but can detect glucose to about 2.5% in solution.

They tolerate a range of acid and alkaline tastes, and are sensitive to and avoid salty feeds. They don't have a receptor for spicy foods, so they can eat hot peppers and other plants containing capsaicin without being bothered by the "burn". Chickens are sensitive to touch and their skin contains numerous kinds of receptors for temperature, pressure and pain. The beak of the chicken, as in all birds, is a complex sensory organ with numerous nerve endings. At the end of the beak is a specialized cluster of highly sensitive mechanoreceptors, called the bill tip organ, which allows chickens to make fine tactile discriminations. Needless to say, damage to the beak, for example the practice of beak

clipping among intensively-reared poultry, is extremely painful.

Birds do not use touch as extensively as humans but it is still a vital sense, particularly for flight. Birds are very sensitive to changes in air temperature, pressure and wind speed and those changes are transferred down the feathers to extensive nerves in the skin.

Chickens have fewer nerves in their legs and feet, which makes them less sensitive to extreme cold and allows them to perch or stand on very cold or hot surfaces without difficulty.

BEECON in KZN in July

This year's annual apiarists' conference, BEECON 2018, is scheduled for July 6 and 7 in Pietermaritzburg. Hosts are

the Kwa-Zulu Natal Bee Farmers Association. Two key themes will be discussed, namely the feeding of bees and *Capensis*.

Kameeldrift Wit Dorpers
Top Bloedlyn & Geregistreerde Wit Dorper Stoet
 • Stoet & Kudde Ramme
 • Volwasse Stoet Ooie
 • Jong Ramme en Ooie
Colette
071 607 7337 25km buite Pretoria

WaterMan
 Drilling & Pumps

- Borehole Yield Testing SANS 10299 BWA app
- Water quality testing SANS 241
- Rehabilitation of Existing Boreholes
- Borehole pump sales & installation
- Exploration & Monitoring drilling
- Reverse Circulation Drilling (RC)
- Symmetric Drilling
- Large Diameter Drilling
- Water borehole drilling

Find us on: **facebook**

info@watermandrill.co.za
www.waterman-drilling.co.za
BRONKHORSTSPRUIT

Tel: 013 932 1740
Cel: 079 526 7196
Fax: 013 932 2352

PLEYSIER INCUBATORS +27 11 659 8041/2
 TRADING HOURS MONDAY - FRIDAY 09:00 - 13:00 14:00 - 17:00

NEW ARRIVAL

24 Egg incubator Automatic turning R2 400	48 Egg R2 900 Automatic turning
56 Egg R3 200 Automatic turning	96 Egg incubator R4 500

CONTACT PLEYSIER INCUBATORS 011 659 8041 or 659 8042 | CELL: 082 936 5843
 Order on our website www.pleysier.co.za or email frank@pleysier.co.za
 2006/169666/23 | VAT: 4290232802 | SARS NO: 2022 1406 For Export

TRANSLUCENT
POLYCARBONATE SHEETING
Flat, Profiled & Multi-wall
Polycarbonate Roof Sheeting
At Affordable Prices
SAVE ON ELECTRICITY
due to natural lighting

Now also available: Mythos Greenhouses
 248 x 185 x 216cm

DIY Skytiles Translucent Lightweight UV Protected

We also supply:
 Turbine ventilators
 Roof fasteners
 Butyl sealants
 DIY Skytiles

MASBIZ TRADING CC

Tel: 011 894 2873 / 079 882 2515
carolann@masbiz.co.za
192 Dr Vosloo Road, Bartlett, Boksburg
www.masbiz.co.za

STIHL®



START STRONG. FINISH STRONG.

Thanks to our advanced lithium-ion technology, **STIHL®** professional cordless products deliver higher performance and do not lose power as the batteries run down.



Prices incl. VAT. E&oe.

FSA 90

Cordless Brushcutter
with bike handle
36 V • 3.2 kg

R6 795*



FSA 90 R

Cordless Brushcutter
with loop handle
36 V • 2.8kg

R6 595*



FSA 130

Cordless Brushcutter
36 V • 4.5 kg

R7 295*



FSA 130 R

Cordless Brushcutter
36 V • 3.9 kg

R7 095*



FOR ADVICE ON THE CORRECT PRODUCT FOR THE JOB CONSULT YOUR STIHL DEALER

ALBERTON: Lawnmower Clinic 011 907 8484 • **BENONI:** Master Mowers 011 395 2648 • **Bwana Tool & Plant Hire** 010 591 2858 • **BRITS:** Enviro Chainsaws Brits 012 252 2479 • **BRONKHORSTSPRUIT:** Bronkhorstspuit Fietswinkel 013 932 0531 • **BRYANSTON:** Lawnpower 011 705 3556 • **CENTURION:** Enviro Chainsaws Centurion 012 653 2479 • **DELMAS:** Deltool 013 665 3192 • **HEIDELBERG:** Masakhane Industries 016 349 6927 • **JOHANNESBURG:** Green's Industrial 011 614 0295 • **JOHANNESBURG SOUTH:** Glen Mowers 011 436 2220 • **KEMPTON PARK:** Precision Mowers 011 391 0708 • **KRUGERSDORP:** GP Lawnmowers 011 955 3610 • **LYNWOOD:** Mowtown Lawnmowers 012 348 6427



HSA 94 R

Cordless Hedge Trimmer

Available with 600mm or 750mm blade

From R6 995*



MSA 160 T

Cordless Chainsaw

(incl. 30cm bar & chain)

36 V • 2.3 kg

R5 495*



HSA 94 T

Cordless Hedge Trimmer

Available with 500mm, 600mm or

750mm blade. **From R6 295***



MSA 160

Cordless Chainsaw

(incl. 30cm bar & chain)

36 V • 3.1 kg

R4 195*



RMA 510

Cordless Lawnmower

With adjustable cutting height

R6 495*



MSA 200 C-BQ

Cordless Chainsaw

(incl. 35cm bar & chain)

36 V • 3.3 kg

R4 995*



BGA 100

Cordless Blower

36 V • 2.5 kg • 63 m/s

R4 995*

* Prices exclude batteries and chargers. STIHL has a wide range of batteries and chargers available for its Lithium-ion PRO range of cordless power tools. Ask your dealer which power combination would best suit your needs.

Get to your nearest
STIHL® dealer for
these and other
fantastic Winter
Promotion specials.

Offer Valid 1 April - 31 July 2018.

**2018
WINTER
PROM
OTION**

Visit our branch on the N14 Highway, Muldersdrift, Krugersdorp



DICLA

Dicla

Getting our hands dirty, putting solutions in yours



Tractors



Horticulture



Implements



Trucks



Construction



Offroad



DICLA

Plot 11 Van Wyksvlei
Muldersdrift
011 662 1371
gerry@dicla.com

Machinery
Manie Lotriet
082 071 5795
diclasales@gmail.com

Horticulture
Hannes Botha
073 442 6589
hannes@dicla.com

Mon-Fri 07:30-17:00

Visit our website www.dicla.com

Help your swarms by feeding them

It isn't generally known, but South Africa is not a bee forage friendly country and apiculturists are struggling to maintain the industry. There is a real risk that there will not be enough healthy bee colonies to service the agricultural industry, in terms of pollination services, in the near future, and as a honey producer South Africa falls short of consumer demand, resorting to imports of often inferior "honeys" from other continents such as the Far East and South America.

The beekeeping industry is facing some of its biggest challenges with shrinking habitats and increasing bee pests and diseases. This is aggravated by an increase in the planting of crops that are reliant on bee pollination. It has been estimated that in ten years' time the pollination

Another article in our regular series on beekeeping, by Mpumalanga beekeeper Inge Lotter

requirement will be as much as double the existing managed bee populations. It is therefore critical that all stakeholders invest into the future of the honeybee. The most consequential issue leading to a bee crisis in South Africa is declining floral resources and the subsequent scarcity of quality pollen, which leads to malnutrition in bees. The key to good bee health is a continuous supply of diverse pollen and nectar from natural sources. Bees consume nectar for energy and pollen as a source of protein. The availability of quality pollen resources is critical for beekeepers in order to build up bee populations prior to using

them for pollination services. Any shortfall of pollen leads to protein stress that weakens bees, making them more susceptible to diseases and pests (such as Varroa mites). It also dramatically slows the queen's breeding output, resulting in low field strength and under-performing pollination services. This has a direct impact on the agricultural sector, as crop yield declines.

All these stresses are negatively impacting the number of wild honey bee swarms from which the average beekeeper's apiary stock is captured. It is critical to boost the wild population with good nutrition in order for the swarms to multiply as many

times as possible during the year.

Swarms are the actual "animal" beekeepers farm with, not individual bees. Natural multiplication of swarms take place when sufficient nutrition reaches the swarm in order to stimulate the queen to produce an excess of eggs, above what is necessary to maintain the hive. This excess will then swarm off to produce a new swarm (the actual offspring of a bee

Continued on page 29



Clovelly
Baby
African Grey
Parrots
Delmas
083 393 0935



BRUSH CUTTER STIHL FS160 29cc R4595.00 Excl VAT 	BLOWER STIHL BR420 56.5cc R4895.00 Excl VAT 	37cm BAR CHAINSAW STIHL MS310 59cc R5200.00 Excl VAT 
---	---	--



GREEN'S INDUSTRIAL SUPPLIES

Sales, service and repairs.

Authorised **STIHL** dealer.

Tel: 011 614 0295/6
www.greensindustrial.co.za



COME VISIT OUR STAND
@MALONJENI GUEST FARM



LAWN MOWER & POOL
011 811 5067
 Cor 3rd & 9th Avenue
 Geduld, Springs
info@lawnandpool.co.za

2 - 3 June 2018

Section 6, Maranatha Business Park,
Middle Muir Avenue, Anderbolt Ext 111,
Boksburg



<https://www.facebook.com/Maxishare-cc-1054175121356419>

OPEN MONDAY TO THURSDAY 07:00 - 17:00 • FRIDAY 07:00 - 15:15 • SATURDAY 08:00 - 11:00



Our Products

- Weldmesh (Rolls & Sheets)
- Hinged-Joint Field-Fencing & Galvanised Flat Sheets
- Binding Wire & Fencing Wire
- Diamond Mesh & Woven Mesh
- J Clips & Pliers; Hog Rings & Staplers; Bowls & Feeders
- Hexagonal Netting Wire & Insect Screening

Directions to Maxishare from the Atlas Road off-ramp from the N12.

Head south on Atlas Road/M43. Turn right into Paul Smit Road. Turn Left into Turf Road. Turn Right into Middle Muir Avenue. Maranatha Business Park is at the end of Middle Muir Avenue.

GPS 26°12.435'S, 028°16.107'E

Disclaimer: Galvanising contains zinc. Customers use galvanised products for livestock and humans entirely at their own risk.

Ins & outs of buying & selling your animals

Smallholders who want to sell a few of their farm animals have various options. They can advertise them in the livestock section of the SA

Small Farmers' Online Exchange, www.sasfox.co.za, and conduct a private sale. In this case the seller needs to state a price wanted for the animal, and perhaps be

prepared to haggle with the prospective buyers. Or they can also sell them to abattoirs or feedlots. Alternatively they can take their animals to an auction, a

particularly good way of ensuring a reasonable market-related price for those unsure of the value of their animals. The seller does not state the

Continued on page 30

BEEKEEPING

From page 27

swarm) which beekeepers will try to capture.

This is where the general public can make a difference. Smallholders, municipalities and home gardeners can reverse this trend by choosing bee-friendly plants as ornamentals, windbreaks, on field edges and ridges, and along roadsides. Fortunately, a number of plants used for soil erosion control or for shelter have abundant flowers to feed bees, making the selection of multi-purpose plants more desirable. This has been done on a large scale by farmers and apiarists

in Israel, where more than a million trees have been planted within the last decade to provide forage for bees. In a desert country that goes six months of the year without rain, the provision of bee forage has now enabled Israeli beekeepers to produce more than 3 600 tons of honey per year, enough for export. Other successful programmes have been implemented in Australia, New Zealand and the USA. It is critically urgent for us to take responsibility to provide the necessary forage to ensure sufficient and healthy bee populations to cater for the

current and future pollination demands. Essentially, without it our bees will decline, resulting in dwindling revenue and food security issues at a national and global level. When deciding on what to plant, decide on something that is beneficial to our bees as well. If every garden can house as many as possible, but at least a few really good bee forage plants we will go a long way towards strengthening at least our wild honey bee population, indirectly also assisting the beekeepers and the pollination industry. For more information and bee forage plant lists contact

Inge Lotter, email inge.lotter@gmail.com or 082 821-5011 or download lists off our website, www.sasmallholder.co.za

The Bee Box



Complete Beehives professionally made and dipped in hot waxol.

Brood box and super all with frames and aluminium lid

Midrand
082 791 3393 Porky Scriven
Tzaneen
082 604 5828 Jason Scriven

Free quotations

EXPRESS WALLS
Quality Concrete Walling

Quinton: 079 492 7841
Philip: 082 670 0794

Quality Concrete Walling

5 year guarantee on all our products

- Manufacture and installation of all concrete walling from 1.8m - 2.4m high
- Wall repair, wall extensions and razor wire on walls

www.expresswalls.co.za Installed throughout Gauteng

RANDVAAL TREKKERS & IMPLEMENTE

117 Kapokboom Street, Valley Settlements, Randvaal

Replacement Parts New & Used: Massey Ferguson, Ford & Fiat

- * Transport
- * Tractor Services
- * Tractor Repairs
- * Implement Parts, Services & Repairs
- * Export
- * Datadot

We Buy & Sell Tractors

Tel: 016 365 6369 / 076 957 5924

www.randvaaltrekkers.co.za

Borehole Water Solutions
Call 084 538 4600

Quality Service throughout Gauteng

Borehole Testing

Water Quality Tests

SABS standards

Borehole Pump Installations

Storage Tanks

Pressure Pumps

Irrigation

Electrical Installations

ALSO:

Mechanical Security Installations

kevin@rainsford.co.za

LIVESTOCK

From page 29

price that he or she wants, although he or she can state a reserve or minimum price. An auction is a public sale in which goods are sold to the highest bidder. In other words, people who want to buy show the auctioneer how much they are willing to pay for the animal and the animal is sold to the person who offers the highest price. General livestock auctions tend to sell a mixture of animals, beef and dairy cattle,

goats, sheep, pigs and chickens. Livestock auctioneering companies supply calendars with information such as dates and venues. A calendar auction is held at the same place on a weekly, monthly, quarterly or even yearly basis. A livestock auctioneer can also conduct on-farm auctions of a specific breed, eg, a dairy auction or a breeding cow or bull auction. It is called a dispersal sale if the seller is no longer going to be keeping



Livestock in the auction pen are manoeuvred by experienced handlers livestock.

At a stud auction animals of special breeding qualities are

for sale. The auctioneer and the sellers will work closely with a breed society which will select the animals according to their standards for such an auction.

All reputable auctioneers have websites and are easily accessible.

But preparing an animal and the paperwork for an auction is quite a process.

To sell an animal one has to register with the auctioneer and book the animal in to the chosen sale.

All animals must be correctly branded or tattooed with the owner's own brand. The SAPS Stock Theft unit inspects animals at the auction and if they do not comply they will not allow them to be sold, and the seller may be charged with transporting an unmarked animal off his land. According to the Animal Identification Act, 2002, it is compulsory to mark all cattle, sheep, goats and pigs.

This entails:

- ☐ Registering with the National Dept of Agriculture in Pretoria,
- ☐ Applying for and being allocated a unique identification mark,
- ☐ Ensuring that animals are tattooed or branded with your mark. You can do this yourself or have it done by a registered contractor.

Permanent identification marks can be put on animals by means of hot iron branding, freeze branding or tattooing, depending on the species.

Continued on page 31

RotoTankTM

Manufacturers of Water, Chemical, Transport, Septic Tanks and Silos

Cape Sales:

Tel: +27 (0)22 433 2342/2937

Fax: +27 (0)22 433 4724

E-mail: rotocape@mweb.co.za

Gauteng Sales:

Tel: +27 (0)12 376 1070/2

Cell: +27 (0)71 689 4216

Fax: +27 (0)86 297 2504

E-mail: roto@mweb.co.za

PO Box 1210, Ifafi 0260

KZN Sales:

Tel: +27 (0)39 685 7243

Fax: +27 (0)39 685 0292

E-mail: kznsales@rototank.co.za

www.rototank.co.za

MASTER BUILDERS ASSOCIATION
KWAZULU-NATAL

ARMISA

GRÉMENT SOUTH AFRICA
irrigation equipment products

086 000 TANK (8265)

Trade in your old tank for a NEW one!

Vertical tanks from 500ℓ to 40 000ℓ

Horizontal tanks from 500ℓ to 8 000ℓ

Modular plastic silos ranging from 8m³ to 24m³

Plastic septic tanks ranging from 600ℓ to 12 500ℓ (2-55 persons)

Free delivery

WINNING FEATURES

- Delivery time 7 to 10 working days
- Light, easy to install ~ no cranes required
- Rust and dent resistant, maintenance free
- Resistant to most hazardous chemicals
- Choice of various colours
- Tank stands available: 1,5m, 3m, 4,5m, 6m, 9m & 12m
- Warranty



From page 30

For more information on animal identification go to www.sasmallholder.co.za, and under the FAQ tab you will find the Manual for the Prevention of Stock Theft in the livestock section. This contains a whole chapter on the identification process. The animals on offer at the auction must also be in a good condition. The SPCA sends inspectors to stock sales and any animals that have been abused, injured or starved may be confiscated. The health and welfare of the animals being traded is of paramount importance to both buyer and seller.

To transport livestock by road without the threat of confiscation by the SAPS, a Certificate of Removal must be completed. You can obtain these from the local Stock Theft Unit or it can be downloaded as a pdf file from www.sasmallholder.co.za under the FAQ section. Also download and complete the Document of Identification under the same section. Complete and take these forms to the auction, so that you can hand

them to the buyer who will use them as proof of purchase when transporting them to his premises. Without this documentation you could be fined or your animals confiscated. Owners must be present to sell their livestock. They may not send other people to sell on their behalf without a signed affidavit that they may do so, and a valid identity document. This rule helps to reduce the sale of stolen

animals. It is up to the owner to transport the animal to the auction in a vehicle that is suitable for carrying livestock. There are transport companies that can be contracted to transport your animals. Make sure that there is no overloading, as an overloaded vehicle is dangerous on the road and an animal can also be trampled if there are too many of them on a truck. The traffic police and the SPCA are always on the lookout for overloaded vehicles.

Vehicles and trailers have to comply with regulations to be

Continued on page 33



The vehicle must be properly-equipped for livestock transportation. Old pallets knocked together on a bakkie is not proper equipment...

Clovelly
Day-old White
Leghorn cross Cockerels
@ R250 per 100
Delmas
083 393 0935

MacBee
Registered Beekeepers
Wanted:
Secure sites to place beehives.
Call us to assess the viability
of your property.
Contact Sharon
083 449-8980
macbeehoney@gmail.com

Leef Groen!

SONKRAG
SOLAR VERSPREIDERS
Tel.: 012 8191081. 0828825145
25°40'.761"S, 028°19'.547"E • sonkragsolar@gmail.com
• www.sonkragsolar.co.za

Solar Geisers

120ℓ Lae Druk	R4 800
120L Tenk plus 30L in buise	
200ℓ Lae Druk	R6 800
200L Tenk plus 50L in buise	
260ℓ Lae Druk	R8 000
260L Tenk plus 65L in buise	
360ℓ Lae Druk	R9 800
360L Tenk plus 90L in buise	
260ℓ Hoë Druk	R12 900
Voertenk, anode en element ingesluit	
Geiser installering kan gereël word teen R4000	

Solar Stelsels

1x 5kva Omsetter & MPPT
6x 245W Panele
8x 200Ah Batterie
Kabels ingesluit

R63 000.00

BTW ingesluit.
Pryse en spesifikasies
mag verander.
Solank voorraad hou!

MESH FOR BIRDS



226 High Road, Pomona, Kempton Park
Inside the premises of Birds and Pets For Africa
Open Monday to Sunday from 8:00 am to 5:00pm
Contact us on: www.meshforbirds.co.za
Barry: 083 679 1317 or aviary@mwweb.co.za
Adelle: 083 427 7101 or sales@meshforbirds.co.za

Mesh: Galvanised After Welding Sold in 30m rolls or p/m

Block Size	Wire dia.	915mm	1220mm	1830mm
6.4mm x 6.4mm	0.7mm	✓	✓	✓
9.6mm x 9.6mm	0.9mm	✓	✓	✓
13mm x 13mm	1.0mm	✓	✓	✓
13mm x 13mm	1.6mm	✓	✓	✓
13mm x 25mm	1.0mm	✓	✓	✓
13mm x 25mm	1.25mm	✓	✓	✓
13mm x 25mm	1.5mm	✓	✓	✓
13mm x 25mm	1.6mm	✓	✓	✓
13mm x 25mm	2.0mm	✓	✓	✓
25mm x 25mm	1.0mm	✓	✓	✓
25mm x 25mm	1.5mm	✓	✓	✓
25mm x 25mm	1.6mm	✓	✓	✓
25mm x 25mm	2.0mm	✓	✓	✓
25mm x 25mm	2.5mm	✓	✓	✓
25mm x 25mm	3.0mm	✓	✓	✓
25mm x 50mm	1.5mm	✓	✓	✓
25mm x 50mm	1.6mm	✓	✓	✓
25mm x 50mm	2.0mm	✓	✓	✓



Mesh: Galvanised Before Welding Sold in 30m rolls or p/m

Block Size	Wire dia.	915mm	1220mm	1830mm
25mm x 25mm	2.5mm	✓	✓	✓
25mm x 50mm	2.5mm	✓	✓	✓
25mm x 50mm	3.0mm	✓	✓	✓
50mm x 50mm	1.6mm	✓	✓	✓
50mm x 50mm	2.0mm	✓	✓	✓
50mm x 50mm	2.5mm	✓	✓	✓
50mm x 50mm	3.0mm	✓	✓	✓
50mm x 100mm	2.0mm	✓	✓	✓
50mm x 100mm	2.5mm	✓	✓	✓
100mm x 100mm	2.0mm	✓	✓	✓
100mm x 100mm	2.5mm	✓	✓	✓

Hexagonal Mesh (Oogies draad) 50m rolls/p/m

Hole Size	Wire dia.	915mm	1220mm	1830mm
13mm hole	0.7mm	✓	✓	✓
25mm hole	0.9mm	✓	✓	✓
75mm hole	1.8mm	✓	✓	✓
90mm hole	1.8mm	✓	✓	✓

A16, A18, A20 Hog Rings and Pliers



Light Duty J-Clips and Pliers



Heavy Duty J-Clips and Pliers



Bowls, Coop Cups and Swivel Feeders



11.5cm
14.0cm
16.5cm
21.0cm



7.5cm
9.5cm
12.5cm
15.0cm



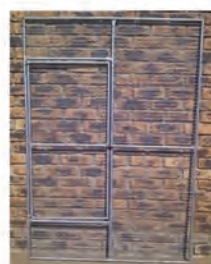
7.5cm
9.5cm
12.5cm
15.0cm



Double Bowl & Triple Bowl
11cm, 14cm, 16cm



Panels & Gates



Trap Cages Various Sizes for Jackal, Meerkat, Leopard etc



Aviaries and Cages (Round, Square, Hexagon, Arch /Pitch roof etc)



**We build custom aviaries
to your specification**

IN THE GARDEN

Autumn watering without waste

Because so much of a Gauteng garden dies back in our dry, frosty winters many Gauteng gardeners tend to forget their

plants in favour of their fireplaces and as a result, are often guilty of under-watering their plants in winter. But winter or summer,

Gauteng being a relatively dry region, one can't rely on rainfall alone to sustain one's plants and a more planned approach to watering will

benefit the plants, while not wasting water, electricity or both.

Experts agree that one should

Continued on page 35

AUCTIONS

From page 31

suitable to transport animals. Animals may not be tied down by the legs or body on the back of an unsuitable trailer or vehicle. They may only be tied by the head (with a halter) or by their horns to the rails of a suitable vehicle to stop them jumping out. Bakkies and trailers must have suitable approved rails to contain the animals. A crate may not be homemade from pieces of wire and wooden poles. The floor of the vehicle must be non-slip ~ a mesh or rubber mat must be laid on the floor to stop animals slipping and falling. Keep a

certificate of removal of animals on the vehicle. Once you reach the auction venue, fill out the form of Acknowledgement of Receipt with your name, address, ID number and stock identification details. Note that your livestock still belongs to you and are your responsibility, until they have been sold. Once the transaction has been finalised, draw up the clearance statement and make sure that all the particulars are correct. Accept payment, preferably in cash. A safer option is to have your money deposited

electronically into your bank account, but before you decide on this option be sure of the bona fides of the auctioneer, as some small plot-based auctioneers have been known to abscond with the buyer's funds rather than depositing it in the seller's account.

The person who acquires the stock may not receive the stock without receiving the document of identification at the time of delivery. If a person receives the stock without the document, such a person is guilty of an offence. The biggest advantage of an auction is that emerging or

small-scale owners can easily buy and sell at a market related price. Large auctions attract a lot of buyers, making prices more competitive.



Hornbill TRAILERS

MAY SPECIALS

2.4 x 1.2m utility trailer	R11800
3m x 1.5m utility trailer	R12800
4m x 1.8m double axle utility trailer, braked	R32800
4m x 1.8m double axle cattle trailer, braked	R36800
5m x 2m double axle car trailer, braked	R33800
6m x 3m single axle advertising trailer	R13800

Many more models, always in stock. We deliver

SABS APPROVED www.hornbilltrailers.co.za Vanderbijlpark and registered body builder Hendry 083 276 4669



TRACTOR MECH

Vaaljapie Specialist

Restoration of New & Old Tractors

For all:

- Sales
- Spares
- Rebuilds
- Service & Repairs

of your:

- Tractors
- Slashers
- Implements
- Stationary Motors

Johan Brouwer 072 576 2392
Martina Brouwer 072 861 6980

403 Bakenkloof Street Pretoria North 0182



Yellow Maize FOR SALE

50 KG Yellow Maize - Whole
50 KG Yellow Maize - Crushed

Also available in Bulk
Price on request

afribore

Anne-Marie - 082 945 7423
Jacinda - 082 789 4171
afribore@icon.co.za



Quality Irrigation Pipe @ BEST PRICES!!

Buy direct from our Factory

- ★ LDPE 12-50mm dia, Class 3 & 6
- ★ HDPE 12-90mm dia, Class 6 to 20
- ★ We do custom jobs to client's requirements
- ★ Made from recycled material ... environmentally-friendly
- ★ Dealers sought throughout Gauteng

Leaky pipe?? Or offcuts?? We buy scrap polyethylene pipe Best prices paid!! Clean up your farm... Recycle the waste!!

DeltaPlast (Pty) Ltd
LDPE and HDPE irrigation pipe manufacturers

Tel 016 455-3947
3 Joubert St Ext
Duncanville,
Vereeniging

"Serving the Farmer since 1932" – 85 Years experience!

TURFMASTER

(PTY) LTD



(NIGEL PLEN)

Email: info@turfmaster.co.za

Website: www.turfmaster.co.za

turfmasternigel.blogspot.co.za

Head Office: East Rand
Tel: 011 730 3400

Centurion
Tel: 012 653 8342/8

Bellville
Tel: 021 945 4106/7

Port Elizabeth
Tel: 041 581-8443/4

Durban
Tel: 031 701 8233

Nelspruit
Tel: 013 492 0490

TANAKA

"The Power in your Hands"

18" Push Mower
480 mm mower
With steel chassis
121.5 cc
Tanaka 550
2-Stroke
Engine

Electric Mower
2200 Watt

Chainsaws

- **51.2 cc** 2.4 kW/2800 rpm
Bar Length: 510 mm (20")
- **72.2 cc** 3.9 kW
Bar Length: 610 mm (24")

Earth Augers

63.3 cc
2.2 kW/
2.95 hp
7500
rpm

DRILL BITS SIZES:

- 100 mm
- 150 mm
- 200 mm

Brush Cutters

- **32.7 cc Straight Shaft**
1.00 kW/1.33 hp/7500 rpm
- **42.7 cc Straight Shaft**
1.035 kW/1.8 hp/7500 rpm
- **51.7 cc Straight Shaft**
1.50 kW/2.00 hp/6500 rpm

Nylon Line

Mist Blowers
Spray against pests

- **40 cc**
26 Liter
Chemical
Tank
- **82.4 cc**
20 Liter
Chemical
Tank

Floor Sweeper

- Operational Width: 80 cm
- 2 Side Rotary Brushes
- Container Capacity: 40 L

Concrete Poker / Vibrator

37.7 cc
1 kW/6500 rpm, 4-Stroke

NEW!

Backpack Sprayer
16 Liter

Clearing Saw

2.4 kW
2.95 hp
7500 rpm

- 10 mm Heavy Duty Shaft
- Heavy Duty Gearbox

Push Brush Cutter

42.7 cc
1.35 kW 1.8 hp
7000 rpm

Hand Held Blowers
25.4 cc
0.95 kW/1.3 hp/7500 rpm
Air Distance: 9 m
Ear Noise: 96 Db

Optional:
Vacuum Bag

Water Pumps

1" - 25 mm

Strong Frame!

Multi Tool 32.6 cc with

(1) 32.6 cc Power Unit (2) Pole Pruner (3) Trimmer Head (4) Hedge Trimmer (5) Lawn Edger (6) Brush Cutter Blade

BARGAIN 5-IN-1

Portable Drill (With Reverse)

25.4 cc
0.8 kW / 1.7 hp / 7500 rpm

Drill Diameter:
13 mm / 28 mm
Two-stage speed
Reduction

Backpack Blowers

- **51.7 cc** 1.75 kW/2.4hp
- **63.3 cc** 2.6 kW/3.5 hp
- **82.4 cc** 4.2 kW/5.6 hp

Water Pumps

163 cc

2" - 50 mm
3" - 80 mm

Available from the following Tanaka Stockist Dealers

Boksburg	011 892 3116	Potchefstroom	018 294 3664
	011 892 0321		018 297 0816
	011 918 5771		
Brits	012 252 2559	Pretoria East	012 800 1450
	073 329 7890	Randburg	073 686 8248
Centurion	012 653 8342	Rustenburg	014 592 3585
	012 653 7987		014 597 3315
Drie Riviere	016 423 1215	Sasolburg	016 976 7777
JHB, Walkerville	011 949 2338	Springs	011 811 5067
JHB, Randburg	073 686 8248	Stilfontein	018 484 5753
Kempton Park	011 394 5036	Vanderbijlpark	016 933 3899
Klerksdorp	018 462 1612	Waterval	012 545 4067
Meyerton	087 310 2670	Witbank	013 692 7400

Also Available from selected OBARO Co-ops Countrywide



Pole Pruner, 25.4 cc

2.5 – 4 m Shaft Extension
12" Guide Bar
0.85 kW/7500 rpm

Hedge Trimmer, 25.4 cc

0.75/1 hp/7500
Bar Length: 600 mm
Dual Sided Scissors

Shredder

163 cc
Power Pro
R183
4-stroke
Engine,
3000 rpm

Suitable
to chip:
Maize, Wood, Leaves, etc

IN THE GARDEN

From page 33

water more seldom but then thoroughly, to avoid water loss through drainage and evaporation.

Slow, deep watering encourages deep root growth which enables plants to reach moisture and nutrients more easily than plants that develop shallow root systems because they have been shallow-watered.

The most effective form of watering is drip or trickle irrigation, which uses 60%

less water than conventional sprinkler systems, and applies it directly where it is needed, rather than turning unplanted patches of soil into a mudbath. It involves dripping water onto the soil at very low rates (2-20 litres/hour) from a system of small diameter plastic pipes fitted with outlets called emitters or drippers.

The different components are easily bought, allowing one to set up one's own system.

Generally staff in irrigation

supply shops are helpful in advising the customer on the correct diameter of pipes, number of drippers and kinds

of connectors you'll need for your specific beds.

You can also install an automatic irrigation system with moisture sensor if you

wish to spend more money.

Otherwise, it is a good idea to invest in a water meter, which is a relatively inexpensive probe that you stick into the soil to test whether you need to water.

In any event, you want to avoid waterlogging, which means that there is so much water in the soil that the roots can no longer breathe, because plants need air,

particularly oxygen, to a greater or lesser depth in the soil. Waterlogging of the soil stops air getting in.

Continued on page 37



Drip irrigation uses 60% less water than sprinkler systems.



A thick layer of mulch keeps the soil cool and slows evaporation.

Alpacas For Sale
Magicalpaca's Farm
 in Kempton Park offers:
A selection of
pedigreed Alpacas
at competitive prices

Coverings available from
 stud quality herd sires

Call Lee Ermen
082 455-4288
bounty@iafrica.com

TIGER TIMBERS

DIRECT TO THE PUBLIC

PINE DECKING
 20 x 110mm
 CCA H3 Treated



PINE T&G
Flooring
 21 x 106mm



PINE LOG
PROFILE
 21 x 106mm



PINE T&G
 16 x 90mm



PINE TIMBER
 38 x 114mm
 S5 Planed



SALIGNA
DECKING
 20 x 98mm



ALSO AVAILABLE

- EASYCLIP DECK FASTENERS
- ULTRADECK SEALANT AND TINT
- INDUSTRIAL PINE TIMBER
- STRUCTURAL PINE TIMBER
- TREATED TIMBER
- GUM POLES
- TIMBER MOULDINGS
- P.A.R PINE
- PINE STABLE DOORS
- SALIGNA STABLE DOORS

Kya Sand Branch
 011 702 3055
 145 Kya Sand Road
 Kya Sand

Fax: 086 519 6385
E-mail: mg@tigertimbers.co.za
www.tigertimbers.co.za

Kyalami (Depot)
 062 871 1285
 75 Main Road (R55)
 Kyalami

Genius Landbou
Import & Export cc



**ONS HET IETS VIR ELKE
BOER SE BEHOEFTE**

Landini **McCORMICK**

**WE STOCK A WIDE RANGE OF
TRACTORS AND IMPLEMENTS**

**BALERS
WRAPPERS
RAKES
DISC MOWERS
TEDDERS**

NEW **FALCON** SLASHERS
BALE HANDLING MACHINES

**A WIDE RANGE OF
BP IMPLEMENTS
AVAILABLE**

IN STOCK:

**BALE TWINE FOR
SQUARE BALERS
ROUND BALERS
BIGPACK BALERS**

**HIGH QUALITY NETTING
FOR ROUND BALERS
& WRAP PLASTIC
FOR WRAPPERS
AVAILABLE AT
GOOD PRICES**

**WIDE RANGE OF
PALLET NETTING
& HAND STRAPPING**

**ENGEN OLIE MET UITKLOP PRYSE
ENGEN OIL AT KNOCKOUT PRICES**



**20 litre
210 litre**

GPS: 26°04.157'S 27°40.845'E

TEL: 011 952 9926/7/8

FAX: 086 571 5578

marco@geniuslandini.co.za

admin@geniuslandini.co.za

From page 35

Weed free beds ensure that your plants are not competing for water.

Hopefully you dug in large quantities of compost or manure when you planted. This not only improves the quality of the soil, but it encourages earthworm activity, aeration and water penetration.

It is not too late in autumn to mulch your beds. Mulch is a layer of material applied to the surface of soil. Reasons for applying mulch include conservation of soil moisture, improving fertility and health of the soil, reducing weed growth and enhancing the visual appeal of the area. It also helps to prevent crop damage. Mulches can be made from several sources including grass clippings, straw, wood shavings, bark or sawdust. Newspaper is a good mulch because of its water-holding qualities,

Digging compost in to your soil encourages earthworms, which aerate the soil and facilitates water penetration at depth

although it doesn't look as natural as organic materials. Watering should take place after sunrise, so that you do not damage the landscape by adding water which will freeze when it comes in contact with vegetation. Irrigating after sunrise will in fact help to wash frost off your lawn and unprotected garden areas. You can also water in the late morning, but avoid watering in the afternoon during winter, as this might cause your plants to freeze in Gauteng's cold nights.

Researchers from the Agricultural Research Council offer the following advice: Seedlings need special care and must be watered regularly to keep the soil

moist at all times.

Watering before and after transplanting is essential, particularly in hot weather. Water should be applied twice per day during the first week and once a day during the second week.

Leafy crops and brassicas generally have high water requirements and need about 25ℓ/m² of water a week. These vegetables should be actively growing from the time they are sown or transplanted. Any lack in water supply can have a negative impact on yield and quality.

Roots and tuber crops need 10ℓ/m² to 15ℓ/m² water per week during the first month after planting. From one month after planting until

plants approach maturity, 30ℓ/m² per week should be adequate. Ensure that water penetrates deeply into the soil, as shallow watering discourages deep root development.

Potatoes should be watered twice a week, but need additional water when tubers start forming.

Carrots should be watered three times a week from three weeks after planting. Green beans and other legumes, cucurbits, solanaceous crops, such as tomatoes and peppers need about 25ℓ/m² of water per

Continued on page 39

WIRE WORX
Suppliers of:
• BARBED WIRE • STANDARDS & DROPPERS
• NETTING WIRE • B GRADE WELDED MESH
• WELDED MESH • GATES, POSTS & STAYS
• GALVANISED WIRE • DIAMOND MESH WIRE
Welded Mesh 1.8 x 100 x 50 x 30m = R850
We only sell quality products!
Kerry: 084 840 0409
kerry.wire@hotmail.com

STEWARTS & LLOYDS
VISIT US ON STAND F36
NAMPO
Grain SA/Grain SA
OESDAG HARVEST DAY
15-18 May 2018 • Bothaville

PALISADE

*The Largest Manufacturer
of Steel Palisade Fencing
in the Southern Hemisphere*

Cold formed palisade panels

40 x 40 section
16 palings per panel

3 000mm wide x 1 800mm high **R743.00**
3 000mm wide x 2 000mm high **R808.00**

Cold formed palisade palings

40mm x 40mm	30mm x 30mm
1 500mm R28.59	1 500mm R20.76
1 800mm R34.31	1 800mm R24.91
2 000mm R38.12	2 000mm R27.68

3 or 7 spike available

CF PALISADE GATES

Includes wheels & tracks

40x40 GATES, 1,8m R914/m
40x40 GATES, 2,0m R946/m
30x30 GATES, 1,8m R749/m
30x30 GATES, 2,0m R806/m

Cold formed palisade panels

30 x 30 section
19 palings per panel

3 000mm wide x 1 800mm high **R667.00**
3 000mm wide x 2 000mm high **R721.00**

Palings and panels manufactured

from 500mm to 3 000mm height

76 x 76 Square Posts
2 400mm R181.00
3 000mm R229.00
Includes domed cap

Alrode 011 900 4270
Boksburg 011 917 0778
Booyens 011 496 3000
eMalaheni 013 692 8425
Pretoria 012 800 9600
Robertville 011 672 1100

Only A-Grade Material Used
We Manufacture Various Lengths
Free Delivery • All Prices include VAT • E&OE

Springs 011 811 5111
Vanderbijlpark 016 981 2038
Vereeniging 016 421 3260
Wadeville 011 824 1800
Wynberg 011 321 7900

www.mnani.co.za
www.tuffy-agri.co.za
gert@mnani.co.za
sales@mnani.co.za
accounts@mnani.co.za

8 THIRD STREET , DELMAS



TEL 013 665 3054
TEL 013 665 2800
IMPLEMENT VERKOPE
076 560 9856
ONDERDELE VERKOPE
083 393 1701

TUFFY SLASHERS



AVAILABLE IN 800mm,1m,1,2m,
1,5m AND 1,8m

TUFFY HAYCUTTER



AVAILABLE IN 1,2m, 1,5m AND 1,8m

TUFFY TWINROTORS



AVAILABLE IN 2 METRE ,
2,4 METRE & 3 METRE

TUFFY MINI ROUND BALERS



MODELS:
TRB 0850, TRB 0870, TRB 1070

TUFFY POST HOLE DIGGERS



AVAILABLE IN MEDIUM AND HEAVY DUTY

TUFFY PIPE LAYERS



AVAILABLE 60mm AND 80mm

TUFFY SCRAPERS



AVAILABLE IN
1,2m , 1,5m AND 2,1m
TUFFY OFFSET FLAILMOWER



AVAILABLE IN 1,4 METRE

Know your soil ~ do these simple tests

Before starting a garden it is important to know what kind of soil you are dealing with, so that you can take measures, if necessary, to grow the plants that you want. If you can learn about your soil's texture, composition, drainage, acidity, and mineral density, you will avoid, up front, the disappointing results that can occur when your soil is unsuitable for your dream garden.

This is one of the reasons why new smallholder farmers are encouraged to have their field soil professionally tested before they plough and plant.

But for a hobby farmer or family vegetable grower the expense of professional soil testing may not be warranted. Fortunately, there are a number of DIY tests you can do which will give you a good idea of what you are dealing with underfoot.

Knowing the structure of your soil will help you determine how much water and organic matter you will need to apply. Your soil is a mass of mineral

particles, water, air, and dead organic matter. The size and form of those particles make up the basic soil structure. There are three soil components – clay, sand and silt. Clay is the smallest mineral component. These tiny flat particles fit closely together to create the greatest surface area of all soil types. Clay soil contains needed nutrients and also stores water well. So well in fact, that drainage is

slow in clay soil. It is also the slowest to warm in the spring. Sand makes up the largest particles in soil structure. These are rounded, rather than flat, and allow for larger space between the particles. Water drains quickly from the soil that has a lot of sand and the nutrients drain faster too. If your soil is mostly sand the plants will need more water and fertilizer.

Continued on page 41

WATERING

From page 37

week.

Water requirements vary according to the stage of development. During week one after planting or sowing, water twice a day; during week two, water once a day; from week three onwards, water three times a week. Sweet potatoes and cucurbits, such as pumpkins, are more drought-tolerant than other crops and require irrigation

once a week from month two after planting.

For sweet potatoes, irrigation is crucial after establishment and is needed twice a day for the first week and once a day for the second week. From the third week water should

be applied three times a week until storage roots have developed (months one and two). Pumpkins require frequent irrigation until six to eight weeks after emergence.

Snake Catcher

Protect Family, Guests, Pets, Livestock



ONLY R 1595.00 & FREE Postage

Call or SMS Ralph: 0825730710

Or email: SnakeAlert@Global.co.za



F SERIES PARTS F100 & F250



CRAIGARY ENTERPRISES CC
99 7th Ave, Edenvale
T: 011 609 3631
F: 011 609 3693
E: craigary@global.co.za

Easyhatch Incubators

Manufacturer of fully automatic industrial and hobby Incubators



Rugare Bird Farm

Breeders of
- Exotic chickens
- Exotic ducks and swans



www.easyhatch.co.za info@easyhatch.co.za

Call us on 011 051 9386 / 079 893 6383

GPS: S26° 41' 12.3" E27° 40' 26.2" (Vanderbijlpark)

AMBERLINK HENS

★ 6 week old Pullets
(All vaccinations done to 6 weeks, including MS Vaxsafe)

★ 17 week old Point of Lay Hens
(All vaccinations done)

AVAILABLE MONTHLY **FARM FRESH EGGS**

016 371-2154
082 903-6595

RIPPLE CREEK

NURSERY & ORGANICS

Weed Free Organic Compost
Lawn Dressing • Garden Soil
Potting Soil • Kikuyu Instant Lawn
Veg & Flower Seedlings, Trees, Fruit Trees, Shrubs, Roses, etc.

TREE CLEARANCE SALE

10 - 50% DISCOUNT

WATER FEATURES, POTS & PAVERS NOW IN STOCK

Open - Sunday to Friday / Closed - Saturday

Tel: 011 965 1777 or 082 875 9507
78 Elm Road, Benoni Agricultural Holdings

Constantly changing,
always up to date

Great online advertising
opportunities to an already
established readership



South African Smallholder Online's web page looks good on
all devices. (desktops, tablets, and phones)

NOW EVEN BETTER

simply go to

www.sasmallholder.co.za

- * The best NEWS/OPINION site for SA smallholders
- * Articles & Comment published regularly
- * Farmers Markets listed BEFORE the printed magazine appears
- * Ask questions - get answers
- * Wider coverage for ALL SA smallholders
- * Useful links and source information on a variety of topics
- * No sign-in or membership required

PLUS

- * Read the magazine as published before it is printed.
- * DOWNLOAD your own copy to read at your leisure.

Enquiries 011 979-5088 graphics@gautengsmallholder.com



From page 39

Silt represents the middle size pieces. It is made up of rock and mineral particles that are larger than clay but smaller than sand. Individual silt particles are so small that they are difficult to see. To be classified as silt, a particle must be less than .005 centimeters (.002 inches) across.

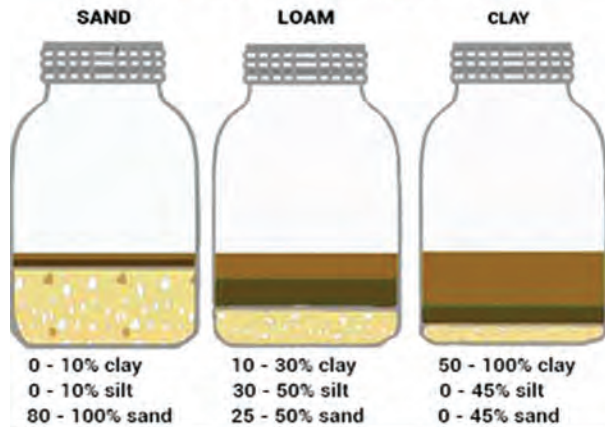
The optimal combination of these three particles is called loam and is considered the ideal garden soil. Knowing how close (or far) you are from loam will help you decide what amendments to make to your soil.

There are different simple tests that you can do.

☐ There is the bottle test.

Take a bottle and fill a third of it with the soil you want to test. Pour water into the bottle until it is almost full. Put a lid on and shake it well for a few minutes. Leave the bottle for an hour so that the soil can settle in the water.

JAR TESTING FOR SOIL TYPE



The substances will settle in layers. Each layer will have a different colour and consistency. Heavy particles (gravel, pebbles and sand) will fall quickly to the bottom of the bottle.

Finer substances will accumulate on top of the heavy particles (silt, humous, and then the fine and very fine clay). The top layer of the water will stay cloudy for a long time, because it will contain clay particles which are so small that they stay floating in the water.

Substances which are lighter than water (leaves, seeds, spores, insect and animal waste) will float on top.

The diagram will give you an idea of how to interpret the contents of your jar.

☐ The sausage test.

Another test you can carry out entails taking a handful of damp soil and feeling it. Is it rough, smooth or sticky?

Then, try to make a sausage. The results should give you a

broad idea of the type of soil that you have.

If, when you try to bend the sausage it breaks quickly and crumbles your soil is sandy or loamy. If you can shape the sausage readily your soil has a

high clay content. Clay soil is smooth and sticky. Loam soil contains sand and silt. Roots grow easily in it and it holds water and nutrients. Loam feels a little rough and sandy, quite smooth but not sticky. It can be made into a sausage, which you should be able to bend half way round.

The majority of vegetables, herbs and fruit trees flourish in loam.

If you have clay soil, you should find that brassicas (Broccoli, Bok choy, Brussels Sprouts, Cabbage, Cauliflower, Kale, Kohlrabi, Mustard and Turnip) thrive. Root vegetables such as carrots and potatoes, and

Continued on page 42

SOLAR MAN



Pre-planning
essential for
quotations

- Solar Power
- Backup Power
- Solar Borehole Pumps
- Solar Geysers
- Solar-friendly Appliances

www.solarm.co.za

Tel: 012 809 1525/1427
solarman@mwebbiz.co.za



Squeeze the soil and form a sausage

Shadow Carports & Palisade

Any shape or size | All material – A Grade | SABS Quality workmanship
18 Years experience



082 466 3335

shadow.carports@gmail.com

COUNTRY STYLE FENCING TREATED POST & RAIL FENCING

- Push-fit
- No nails or screws
- No Maintenance
- Very quick
- Very strong
- CCA TREATED

GUM POLES

For Cattle, Horses & Gardens

POLE & TIMBER SUPPLIERS

TEL 011 640 7975 ~ 072 113-4637

www.poleandtimber.co.za



SPARTS MOTOR SPARES

Tel: 011 967 1295
011 967 2151
Cell: 072 041 7819
Fax: 011 963 0473
086 218 4686

Email: spartscs@mweb.co.za



261 & 262 Stanley Road, Pomona, Kempton Park, CNR of Stanley & High Road
Monday to Friday 07:30 to 17:00, Saturday 08:00 to 13:00, Certain Public Holidays 08:00 to 12:30



IN THE GARDEN

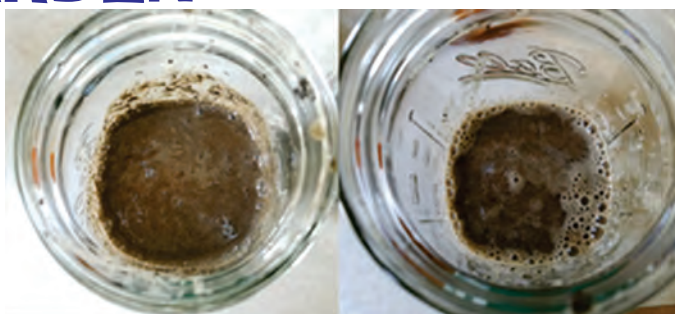
From page 41

fruit trees do not grow well in clay soil.

Sandy soil is easier to dig and work in than denser soil.

Sand, being abrasive, tends to break down organic material to provide plant roots with nutrients. Root plants such as potatoes, carrots, radishes, garlic and beets grow well in sandy soil. Other food plants that grow well in sandy soil include tomatoes, strawberries, blueberries, peppers, lettuce and some kinds of beans. Fruit trees will need nutrients and regular watering.

☐ Simple pH test



Home-made pH test

Another useful soil test to carry out is to find out whether your soil is acid or alkaline. The pH or acidity level of your soil has a large part to do with how well your plants grow and pH is tested on a scale of zero to 14, with zero being very acidic, seven

being neutral and 14 being very alkaline. Most plants grow best in soil with a fairly neutral pH of between six and seven. Knowing your soil pH is the key to understanding if essential minerals will be available to the roots of your plants.

You can test your garden soil pH with vinegar and bicarbonate of soda.

Collect a cup of soil and put two spoonfuls into separate glasses. Add half a cup of vinegar to the soil in one glass. If it fizzes, you have alkaline soil, with a pH between seven and eight.

The chemical reaction that you're seeing occurs when an acid (the vinegar) comes into contact with something alkaline (the soil).

If it doesn't fizz after doing the vinegar test, add half a cup of water to the other container and mix. Add half a cup of bicarb. If it fizzes you have acidic soil, most likely with a pH between five and six. The reaction you're seeing is the result of acidic soil coming into contact with an alkaline substance (the bicarbonate of soda).

If your soil doesn't react at all it is neutral with a pH of seven and you are very lucky. You can add different substances to the soil to alter the pH, the most usual being lime to make it more alkaline and sulphur, or a sulphur compound, to make it acidic. Soil amendment takes time however, so make small changes and wait for them to

Continued on page 43

Bekostigbare implemente geskik vir die klein boer

SKRAPER
Lem is VERSTELBAAR
R2 200
• 1.5m wyd
• Geskik vir klein trekkers

BOSSIEKAPPER
Kante is VERSTELBAAR
R6 500
• 1.2m wyd
• Sonder PTO
• 1.5m ook beskikbaar

Pryse sluit BTW in 072 153 8776



Wastewater Treatment Systems

- Does your septic tank smell?
- Has your French drain failed? ... Again?
- Are you polluting the neighbour's borehole water?
- Are you compliant with the National Water Act?
- Would you really like to reuse your water?

Each Scarab system...

- is designed to comply with the National Water Act
- is simple to install, maintain and operate
- requires no chemicals (Ozone optional)
- uses minimal power
- is almost maintenance free
- produces clear and odourless water
- is modular to suit new loadings
- is sized from the single house to large estate





The Scarab system is:

- Featured in the Dept of Water Affairs best practices guideline policy
- Listed as a top 100 SA company for its technology in 2004, 2005 and 2006, and for receiving the Bio2Biz award in 2006.
- A preferred supplier to the Dept of Health - Rural Clinics (KZN)
- Featured on SABC3 Business Update

Johan 082 535 4576
e-mail: johan@scarabsa.co.za

Tel: 014 736 3463
e-mail: scarabwater@gmail.com
Web: www.scarabsa.co.za

TREAT YOUR WATER TO A SCARAB SYSTEM

Popular garden plant with medicinal uses

Commonly known as African wormwood, *Artemisia afra* or wilde-als is a soft aromatic shrub that is one of the most popular medicinal plants in South Africa.

Strong and bitter, it is easy to grow from seedlings or cuttings and is not fussy about the soil that it is planted in, becoming a large, bushy and drought resistant plant. It thrives in full sun and with

its silver-grey foliage it makes a striking display in any garden.

Wormwood grows in thick, bushy, slightly untidy clumps, usually with tall stems up to 2m high, but sometimes as

low as 0.6m. The stems are thick and woody at the base, becoming thinner and softer towards the top. The upper surface of the leaves is dark green whereas the undersides and the stems are covered with small white hairs, which give the shrub the characteristic overall grey colour.

Continued on page 44

SOIL TESTS

From page 42

take hold before making further amendments. And, the addition of lime or sulphur can have other effects on the soil and other fertilizers which need to be taken into account before you embark on a wholesale pH change.

You may have different types of soil in different parts of your smallholding, so consider testing each of your garden beds, and if you are working on a pasture or field, test samples from each

corner as well as the centre. Choose plants that will thrive in your soil. The following crops prefer a somewhat acid soil - they can tolerate a pH of 5.5 to 6.5: basil, carrot, cauliflower, mielies, cucumber, parsley, sweet potato, potato, eggplant, garlic, melon, parsley, pepper, pumpkin, radish, rhubarb, squash, tomato, turnip, while strawberries, raspberries, blueberries etc love acidic soil.

If your soil tests slightly alkaline (pH between 7 and

8) you'll be able to easily grow these vegetables without making amendments: artichoke, asparagus, Brussels sprouts, cabbage, Chinese cabbage, leeks, lima beans, peach tree, spinach, beetroot and Swiss chard. Sometimes, it's just easier to work with the soil that you have than to fight it. Continue to test and tweak your soil over time. Maintaining healthy soil is an ongoing task.

Dikgogo Fela
Chicken Abattoir

We slaughter for the Smallholder

Certified Halaal

LIVE & SLAUGHTERED
Chicken Products for sale.
Open to the PUBLIC!
Randfontein
S 26°12.310' E 027°36.156'
083 401 3002

A-Raam huis
Voltooi jou huis met ons staalstruktuur
STAALSTRUKTUUR 210 vk.m
OPGERIG
R219 590 btw. uit.
Staalstruktuur vir 3 slaapkamers en 2 badkamers

OPGERIG - 8 TOT 10 DAE

STAALSTRUKTUUR 101 vk.m
OPGERIG
R139 900 btw. uit.
Staalstruktuur vir 2 slaapkamers en 1 badkamer met motor afdak

FS STEEL FRAMES
Buildings | Factories and Warehouses | Design and Construction
BOUWERK UITGESLUIT

PIETER 082 497 4247 | info@iframe.co.za | www.aframe.co.za

Raspberry Canes

Plant NOW for delicious fruit next summer

In 2.5 litre bags: R30
Cash & Collect

072 587 9137
sweetberries@mweb.co.za

WWW. TheSunPays .CO.ZA

100! Low pressure solar geyser from R3 290
Auxiliary tank included

Solar panels @ R7,58 per Watt

Solar pump 140m max head @ R25 545.00, incl 9x 250Watt panels, pump and controller
www.TheSunPays.co.za

082 515 1655 or 012 734 0915

All prices include VAT | Free delivery 100km from Cullinan
Full prices and specs on website | No installation included

IN THE GARDEN

From page 43

Very typical of *A. afra* is the strong, sticky sweet smell that it exudes when touched or cut.

Actively growing in the summer months, it should be able to take quite low temperatures during the winter months. In early spring it should be cut back to encourage new growth. Because the leaves are very strong-smelling, it is used extensively in pest control. If you scatter leaves between the leaves of cabbages, cauliflower or broccoli, they will repel leaf-eating worms. It works well when planted among fruit trees to discourage harmful insects. One can also break off twigs and pull off the lower leaves. These, scattered as mulch among vegetable seedlings, with the twigs pushed into the ground right next to the seedlings, protects them from cutworms. The bushy tops of

If you scatter the leaves between the leaves of cabbages, cauliflower or broccoli, they will repel leaf-eating worms

the twigs can also give protection from the hot afternoon sun until the seedling is growing strongly. Wormwood can also be used as an insect repellent in the home, where you can sprinkle leaves around ant holes or among clothes as a moth repellent. Crush the leaves and mix with cornflower to make flea powder to use on dogs. In the pantry dried leaves placed in containers of dried beans, flour and other grains will keep weevils out. *Artemisia afra* is one of the oldest and best known medicinal plants, and is still used effectively today in South Africa by people of all cultures. The list of uses covers a wide range of

ailments from coughs, colds, fever, loss of appetite, colic, headache, earache, intestinal worms, insect bites and even malaria. *Artemisia* is used in many different ways but one of the most common practices is to insert fresh leaves into the nostrils to clear blocked nasal passages. Wormwood has a very bitter taste and is usually sweetened with sugar or honey when drunk. Wilde-als brandy is a very popular medicine still made and sold today.

The roots, stems and leaves are used in many different ways and taken as enemas, poultices, infusions, body

washes, lotions, smoked, snuffed or drunk as a tea. Medical research is being undertaken on the properties of this plant in treating some very serious diseases, with most encouraging results.

African wormwood or wilde-als



Fire beater

FIGHT VELD FIRES EFFECTIVELY
Get yours TODAY:
It's the LAW!!

1,8m long, thick but lightweight wooden handle keeps user away from smoke & flame

Unbreakable Fastening

Made from recycled rubber belting (not strips)

Only R90,00 cash & collect
Price includes Vat.

Trade enquiries welcome
Scrap belting also available

Solid rubber sheet SMOTHERS flames FAST!

To order call
Derek Whittall
078-706-6456



Goods for sale?

SASFOX.co.za

SA SMALL FARMERS ONLINE EXCHANGE

Buy . Sell . Swap Kaap . Verkoop . Verrui

Fruit Trees

Olive, peach, nectarine, plum, almond, apricot, walnut, prune, pomegranate, pecan nut, apple, cherry, pear, fig, quince, mulberry, lemon and grape vines.

Shade Trees Vrugtebome

Olyf, perske, kaal perskes, pruim, amandel, appelkoos, okkerneut, pruimedant, granaat, druive, pekanneut, appel, kersie, peer, vy, kweper, moerbe en suurlemoen.

Skadubome Vereeniging
Douw 084 506 5125

Dam Linings & Tarps



Reservoir Linings



Mesh Dams



Chicken Run Curtains



Earth Dam Linings



Feedcovers



Truck Tarps



TATA MA TARPS & LININGS

072 279 3294
www.tatamatarps.co.za



The book that every smallholder needs

Contents will include:

- Infrastructure (fencing, septic tanks, irrigation etc)
- Keeping Livestock
- Crop Production
- Pasture Management
- Farm & Garden Machinery
- Legislation applicable to smallholders
- and much more!



**LIMITED STOCK LEFT ~
Order your copy TODAY!!**

Only R180-00 VAT and DELIVERY included

**34 chapters,
fully-illustrated
208 pages**

(Complete & email to bowford@gmail.com or fax to 086 602 3882

Please send me copies of the Smallholder's Companion.

Payment can be made by postal order or EFT (we will supply bank details on request)

Name:

Postal Address:

Tel/Cel number:

Phone 011 979-5088 or email bowford@gmail.com for EFT & delivery details.
A receipted Tax Invoice will be issued to you as acknowledgement of your order
and you will be notified of your Post Office tracking number or other delivery details.

DIARY

ATTENTION CRAFT MARKETS, CLUBS ETC.: If you would like details of your events included in the Diary, please fax or email your information to the Editor. For non-commercial enterprises this service is FREE.

NOTE: FARMERS' & CRAFT MARKETS. For a listing of REGULARLY HELD markets and fairs please see the separate section on page 47. Only markets that are held infrequently are now listed in this calendar section.

Every Sunday
Cattle drive with City Slickers breakfast, Diamond X Cowboy Ranch, near Rayton. Call Rudan on 082 410-3180
horses@diamondxrancho.co.za, www.diamondx.co.za., R500 per person.

Mnandi Methodist Church, 09:00, Mnandi Centre, cnr Tulip and Short Streets, Jen 012 651-5509. Gail 072 477-0708., A small community who worship together. We have a Youth and Children's church.

Premier Mine Presbyterian Church, Lower Oak Ave, Cullinan. Garden of Remembrance (Columbarium), 079 060-9990 or 012 734-1640, Worship and Sunday school. Holy Communion for all on the 1st Sunday of every month.

Every Monday
Alcoholics Anonymous. 'Courage to Change' Group meeting, 19:30, Benoni Agricultural Holdings, Marcus 082 042-7730. Warren 082 335-0049. Glen 072

239-3024., If you want to drink – that's your problem! If you want to stop – that's our problem! No fees; no dues; just concerned fellowship.

2018

May

1: Workers Day
7-9: Cattle Artificial Insemination Course, Rothman Livestock Training Services, Muldersdrift. Call Lily 078 546-7985
10: Cattle Pregnancy Awareness Course, Rothman Livestock Training Services, Muldersdrift. Call Lily 078 546-7985
11: Calf Rearing Course, Rothman Livestock Training Services, Muldersdrift. Call Lily 078 546-7985
14-16: Sheep & Goats Artificial Insemination Course, Rothman Livestock Training Services, Muldersdrift. Call Lily 078 546-7985
14-18: Soil Fertilization & Irrigation Course, ARC Vegetable & Ornamental Plants Institute, Roodeplaat. R3 200 per person. Contact Lerato Sebege 012 808-8000
15: New Moon
15-18: Nampo Harvest Day Show, Nampo Park, between Klerksdorp and Bothaville
19: Northern Beekeeping Association members' meeting, including an address by a guest speaker and practical beekeeping training, as well as a "silent auction" of beekeeping and related equipment. Silver Falcons Rugby Club, Silverton. Visitors invited from Pretoria & surrounds. For time and details call Riekke van den Berg 082 972-1889

19-20: SA Koi Keepers Society 27th National Koi Show, Cresta Shopping Centre, Beyers Naude Dr, Randburg. From 0900 daily. Adults R25, Children R10. Email gauteng@koisa.co.za for more details.

22-24: Foundations for Farming 3-Day Basic Conservation Agriculture Course, Beula Park, Sam Green Road, Meadowdale, Gauteng. The courses comprises theory and practical training, including Conservation Agriculture Principles, Feed Your Family, Vegetable Gardens, Herb Cultivation, Uses of Herbs, Compost Making, Practical Home Remedies, Agroforestry, Cover Crops, etc. For bookings contact Neill Jackson on 082 407 6774

28-29: Cattle Stockman's & Animal Husbandry Course, Rothman Livestock Training Services, Muldersdrift. Call Lily 078 546-7985
29: Full Moon
30-31: Cattle Nutrition Course, Rothman Livestock Training Services, Muldersdrift. Call Lily 078 546-7985

June

1: Permaculture Design Course starts at Puschka Farm near Magaliesberg. Course runs over six weekends. Call Peter 083 445-5058 or email info@puschkafarm.co.za
2-3: OutdoorX outdoor lifestyle show, Malonjeni Game Farm, Heidelberg. 0900-1800 daily.

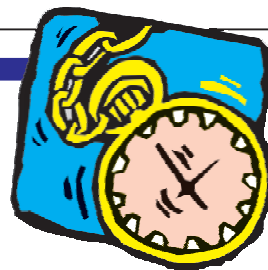
11-15: Harvesting & Marketing Vegetables Course, ARC Vegetable & Ornamental Plants Institute, Roodeplaat. R3 200 per person. Contact Lerato Sebege 012 808-8000

12-14: AviAfrica Show. Wild Fig Business Park, Johannesburg. Products such as animal feed, irrigation products, agricultural products, feed supplements and more in the meat, poultry & seafood industry. Organised by SA Poultry Association

13: New Moon
16: Youth Day

25-27: Cattle Artificial Insemination Course, Rothman Livestock Training Services, Muldersdrift. Call Lily 078 546-7985

26-28: Foundations for Farming 3-Day Basic Conservation Agriculture Course, Beula Park, Sam Green Road, Meadowdale, Gauteng. The courses comprises theory and practical training, including Conservation Agriculture Principles, Feed Your Family, Vegetable Gardens, Herb Cultivation, Uses of Herbs, Compost Making, Practical Home Remedies, Agroforestry, Cover Crops, etc.



For bookings contact Neill Jackson on 082 407 6774

28: Full Moon
28: Cattle Pregnancy Awareness Course, Rothman Livestock Training Services, Muldersdrift. Call Lily 078 546-7985
29: Calf Rearing Course, Rothman Livestock Training Services, Muldersdrift. Call Lily 078 546-7985

July

6-7: BEECON 2018, hosted by the Kwa-Zulu Natal Bee Farmers Association, Pietermaritzburg. Themes for discussion include feeding of bees and the Capensis problem.

13: New Moon
20-22: WODAC – World of dogs & Cats & Pets Show, Gallagher Convention Centre, Midrand. 0900-1730 daily. Products for Dogs and Cats etc in the pet & veterinary industries.

21: Northern Beekeeping Association members' meeting. Visitors invited from Pretoria & surrounds. For times, venue and details call Riekke van den Berg 082 972-1889

23-25: Cattle Artificial Insemination Course, Rothman Livestock Training Services, Muldersdrift. Call Lily 078 546-7985

26: Cattle Pregnancy Awareness Course, Rothman Livestock Training Services, Muldersdrift. Call Lily 078 546-7985

27: Full Moon
27: Calf Rearing Course, Rothman Livestock Training Services, Muldersdrift. Call Lily 078 546-7985

August

9: National Womens Day

9-11: Kragdag Expo, Diamantvallei Landgoed, Donkerhoek.

11: New Moon

18: Northern Beekeeping Association members' meeting. Visitors invited from Pretoria & surrounds. For times, venue and details call Riekke van den Berg 082 972-1889

26: Full Moon

27-29: Cattle Artificial Insemination Course, Rothman Livestock Training Services, Muldersdrift. Call Lily 078 546-7985

LIVESTOCK SALES

Auctions: Bronkhorstspuit - Every Tuesday

Gys Taute 083 253 6906

Delmas - 2nd & 4th Thursday

Johan Taute 073 204 7646

Belfast: Wednesdays • Ermelo: Thursdays • Standerton: Fridays

Vleissentraal Ermelo
017 819 1106
www.vleissentraal.co.za



Buy . Sell . Swop

Classifieds

- Free Classified advertisement for small farmers
- Free online market for Produce, Food, Veg, Preserves, Dairy, Meat Products...
- Buy what you need online
- Sell what you don't need online
- Swop goods, fresh produce etc...

For commercial DISPLAY
advertising options on the site
call or email us TODAY

No Commission, No Nonsense, Try it Today!!

www.sasfox.co.za

admin@sasfox.co.za

accounts@sasfox.co.za Tel: 011 979-5088 or 076 176-7392



Regular Gauteng Farmers' Food Markets

NOTE: This is a listing ONLY of markets held to a regular weekly or monthly schedule. Markets held less frequently are listed in the DIARY section of the magazine and we urge readers to check each month for dates and events of interest. We would like this list of food markets to be as comprehensive as possible. If you know of farmers' food markets that are not listed here, please email us the contact details of the organisers, and details of the market. Only FOOD markets are included. Similarly, if you know of markets in this list that have CLOSED please inform us so that we can delete incorrect or outdated information. We invite you to tell us of your experiences when visiting these markets so that we can better inform our readers. Were they as advertised? Was the produce on sale plentiful, well-priced, well-presented and fresh? Email your comments to editor@gautengsmallholder.com

DAY	WHAT	WHEN	WHERE	CONTACT	WHAT TO EXPECT
Thursday					
Every Thursday	Bryanston Organic & Natural Market	09:00 - 15:00	40 Culross road, Bryanston (off Main Road)	Konrad or Glenda 011 706 3671 glenda@bryanstonorganicmarket.co.za	Quality hand crafted goods, unique art and fresh organic and naturally grown produce.
Friday					
Last Friday	Walkerville Farmers Market	18:00 - 22:00	112 R82 Main road, Walkerville	079 076 7680	Fresh produce, arts & crafts, food court and kids play area.
Last Friday	The Market In The Garden	09:00 - 15:00	Garden shop, Braam Fischer, Bryanston (next to Sandton Clinic)	Robyn 083 311 4768	Fresh produce, home industry & craft, food etc. Enquire about stall prices
Saturday					
Every Saturday	The Red Windmill Village Market	09:00 - 15:00	104 Main road, Walkerville	082 627 3134 or 072 637 9355 Stalls: 082 641 8982	Fresh produce, food stalls, coffee shop, plants, arts & crafts, book etc.
Every Saturday	The Red Windmill Village Market	09:00 - 15:00	104 Main road, Walkerville	082 627 3134 or 072 637 9355 Stalls: 082 641 8982	Fresh produce, food stalls, coffee shop, plants, arts & crafts, book etc.
Every Saturday	Waterfall Estate Farmers Market	09:00 - 15:00	Waterfall Estate, waterfall cnr Midrand	Robyn 083 311 4768	Fresh produce, pickles, preserves and home industry & craft, food etc. Enquire about stall prices.
Every Saturday	Pretoria Boeremark	05:30 - 09:30	Moreleta street entrance, Krige street ext, Silverton	012 804 8031 or 079 987 1025	Fresh produce & traditional bazaar treats like jaffles, kailings with pap & boerewors rolls.
Every Saturday	Bryanston Organic & Natural Market	09:00 - 15:00	40 Culross road, Bryanston (off Main road)	Konrad or Glenda 011 706 3671 glenda@bryanstonorganicmarket.co.za	Quality hand crafted goods, unique art and fresh organic and naturally grown produce.
Every Saturday	The Hazel Food Market	08:00 - 14:00	Greenlyn Village Centre, cnr Thomas Edison & Mackenzie str, Menlo Park, Pretoria	Rietha 083 554 5636 www.hazelfoodmarket.co.za	Fresh produce straight from the producer. Coffee, eats and sale
Every Saturday	Walkerville Farmers Market	09:00 - 15:00	112 R82 Main road, Walkerville	079 076 7680 info@wfmmarket.co.za	Fresh produce, arts & crafts, food court and kids play area.
Every Saturday	Walkerville Country Market	09:00 - 15:00	Walkerville showgrounds on the R82	Noorunisha 074 141 8485	Fresh produce, crafter's market, food court, craft beer, kids play area and pet friendly.
Every Saturday	Bosheuvel Fresh Produce	10:00 - 19:00	54 Glory road, Muldersdrift	Mitch 082 553 2846	Outdoor country experience working farm cattle, sheep pigs. Free range meat, cheese, eggs and poultry. Free range craft beer
Every Saturday	The Fresh Co-op Weekly Farmers Market	07:00 - 10:30	204 Allan road, Glen Austin Halfway House, Gauteng	info.freshproducecoop@gmail.com 082 369 7755	Fresh produce, pickles, preserves, home industry, arts and crafts, food etc.
Every Saturday	Jози Real Food Market	08:30 - 13:30	Pirates sports club, 25 Braeside Rd, Greenside	Ingrid 083 532 2992 jozirealfoodmarket@gmail.com	Outdoor pet & child friendly, organic vegetables, food, arts & crafts
2nd Saturday	Brakpan Boeremark	09:00 - 14:00	Cnr van der Walt & Dirk van der Hoff road, Brakpan	Marius 082 904 8852 or 011 744 2322	Over 50 stalls, food, art crafts etc.
Last Saturday	Fresh2U Farmers Market	08:00 - 14:00	Cnr Main & High street, Modderfontein (behind 33 high str)	Jane 083 376 5567 Chantelle 082 338 7818 wardek@iafrica.com	Over 50 stalls, fresh produce, home made goods, plants, food & more.
Last Saturday	Fresh Produce Market	08:00 - 13:00	Lakeside Mall Boathouse	Alma 079 940 0201 realfood4realpeople@gmail.com	Local fresh produce direct to the public.
Last Saturday	Windpomp Market	08:00 - 14:00	Broodblik & Koffiepit on the R51 between Petit & Bapsfontein	083 445 1608 adelekoffiepit@gmail.com	Homemade crafts & food stalls, bakery & coffee shop and entertainment.
Sunday					
Every Sunday	The Red Windmill Village Market	09:00 - 15:00	104 Main road, Walkerville	082 627 3134 or 072 637 9355 Stalls: 082 641 8982	Fresh produce, food stalls, coffee shop, plants, arts & crafts, book etc.
Every Sunday	Fourways Farmers Market	10:00 - 15:00	Cnr Montecasino Boulevard & William Nicol Drive, Fourways	011 465 0827 www.ffmarket.co.za	Get your groceries... in the garden!
Every Sunday	Carlington Craft & Food Market	09:00 - 15:00	The Bru House on the R563 Hekpoort-Kruger'sdrop Rd	For stalls 0827824142 Debbie.Prinsloo@outlook.com	Restaurant, live music, kids play area, safe parking

Having difficulty finding a copy of

GAUTENG SMALLHOLDER

MAGAZINE

at your local store?

SUBSCRIBE

and we will send it monthly by post

Please post me the Gauteng Smallholder for the next 12 editions. My cheque/ postal order for **R210-00** made payable to **BOWFORD PUBLICATIONS**, is enclosed.

NAME: _____

Tel: _____ e-mail: _____

Postal Address: _____

_____ code _____

Please make cheques or postal orders payable to **BOWFORD PUBLICATIONS (PTY) LTD** (not the Smallholder). Post coupon & payment to: Subscriptions, Box 14648, Bredell 1623 or phone 011 979 5088 for our banking details if you prefer to do an EFT instead.

R210

for 12 editions

FREE CLASSIFIED ADVERTISEMENTS

Conditions:

1. Only private advertisements for used or second-hand items accepted. COMMERCIAL and BUSINESS advertisers should refer to our rates on page 1.

2. All Classified Advertisements received will be moderated and uploaded to our sister website, www.sasfox.co.za. They will remain on the site for a calendar month, unless requested otherwise by the advertiser.

3. No Classified Advertisements will be published in this magazine in future.

4. Only ONE insertion per application, and one category per coupon.

5. Classified advertisements must be renewed monthly for repeat placements.

6. The Publisher reserves the right to edit or omit advertisements at his discretion.

7. It is the Advertiser's responsibility to ensure we have received the advert.

SASFOX co.za

SA SMALL FARMERS

ONLINE EXCHANGE

Buy . Sell . Swap Koop . Verkoop . Verruil

USE THE COUPON BELOW FOR FREE CLASSIFIED ADS on www.sasfox.co.za

1 WORD (BLOCK CAPITALS) PER SPACE, PLEASE

Tel: _____

FOR ENQUIRIES TEL 011 979-5088

Send your Classified Advertisements to us:

BY FAX: 086 602-3882

BY POST: Box 14648, Bredell 1623

BY EMAIL: admin@sasfox.co.za

BY HAND: 370 da Costa Dr, Bredell, Kempton Park

48

www.sasmallholder.co.za

My photographic career

A relic on my youth emerged from its dusty hiding place the other day, namely my old Polaroid Land camera, which got me thinking about how much photography has changed over the past half a century. Not that one can even call the art of picture-taking photography any more, for gone are the light-sensitive films and papers, and the chemicals, from which photography takes its name.

My interest in photography started before I turned ten, sparked by one Robert Sithole, the local house-painter, who earned extra income when not house-painting by taking meticulously-posed black and white postcard-sized photos of the local domestic workforce in a nearby park, and who thus needed a darkroom in which to process his work.

Because he had painted our house, Robert knew that there was a shallow unused space under the floorboards with a small hatch-like door as access, and he persuaded my mother that a darkroom would fit in there nicely. She agreed, and he thus set about digging out a pit deep enough in which to stand upright, and erecting shelves and installing an illegal power connection. Next, he persuaded a family friend for whom he had also done painting work to part with an ancient enlarger, a safe-light and some developing trays and, hey, presto, he was in business. He thought our suggested name of "Snap-Happy Studios" a bit pretentious and so just called himself "R Sithole, Photographer" and had a rubber stamp made with his name and address, which was stamped on to the back of all his work.

Soon my curiosity at this activity under the house turned to enquiring fascination and I became a willing assistant, carrying kettles and buckets of water, hot and cold, with which to mix and warm chemicals and wash the film and prints, and agitating the papers in the developer tray, and before long I had acquired the skills and knowledge to process my own pictures. Only problem was, I didn't possess a camera. This was solved one birthday when I was presented with a Kodak Brownie Box camera and with this I set about wasting yards of film taking "artistic" pictures of anything that stood still long enough, and even things that didn't.

My knowledge and skill in the darkroom was put to good use at high school, where we had our own darkroom, better equipped than Robert's, and where we pupils spent many happy hours in the gloom smoking Lucky Strikes and reproducing pictures of nudes filched from the dog-eared Playboy magazines that did the rounds.

I even did a stint as a professional photographer's assistant, making useful pocket-money carrying his cameras and flashes to, especially, matric dances and functions. One I recall was a black-tie dinner of the Friends of Rhodesia Society. Halfway through the speeches one of the luminaries rode a big white horse into the ballroom. I can't remember why. The horse became unnerved at the clapping and flashing of the camera and promptly crapped on the carpet.

In due course I became bored with all the chemicals and stuff and the delay between taking the photo and seeing the final print, and that's when I saved up and bought my Polaroid instant camera. This is nothing fancy, its lens and optical doings being no better than my Brownie Box camera. But the film/paper/processing was unique.

At great expense one bought a box of ten picture packs. These were inserted into the camera and exposed in the normal way. Then to make the picture one gripped a cardboard tag and slowly pulled the exposed paper out of the camera. This, in turn caused a roller to burst a little tube of developing gunk which was spread over the surface of the paper by a scraper and after a short wait one peeled off the cover to reveal one's picture, with the colours not quite right, and which faded in a few weeks.

All of that skill and knowledge is gone, today, of course. Robert's carefully-posed black and white postcards, enlarged and developed in our cellar, of the suburb's domestic workers are now the yellowed and faded pictures of somebody's grandmother or father; darkroom equipment is only found in a museum, and although Polaroid still makes instant cameras, if you want a personal picture today you point your cellphone at yourself and take a "selfie," which will quite inevitably turn out to be a distorted picture of you and your friends looking imbecilic, the resulting image being instantly forgettable as a work of "art". The best place for it thus is not on your grandchildren's wall or mantelpiece but in the electronic trashcan of a social medium such as Facebook.





WATER PLANT
turning your garden into a paradise
since 1982

Tel 0861 987 654 Cell 083 407 7589

WATER PUMPS



FROM **R799**

DRAINAGE PUMPS



FROM **R849**

Prices include VAT, E&OE, while stocks last.
Illustrations may differ from products supplied.

We Courier Nationwide!

Braais & Pit Fires



SEE THE FULL RANGE ON OUR WEBSITE
www.waterplant.co.za

Hartbeespoort: R512, near Pecanwood
e-mail albert@waterplant.co.za



Water features

Revet Authorised Retailer of

JOHN DEERE

CLOTHING, TOYS AND NOVELTIES



**7930 Ride-on
Tractor R2995⁰⁰**

**Farm-opoly
R450⁰⁰**

**Carry Case
R395⁰⁰**



**Everything for newborns to toddlers...
AND BIG KIDS TOO**

We courier nationwide



facebook

Like + Share

**Find us on Facebook Revet (Pty) Ltd
Authorised Retailer of
John Deere Merchandise**

PLEASE NOTE OUR NEW ADDRESS:

270 Ninth Road, Bredell, Kempton Park, 1619
Tel 011 965 1292 | Cell 083 680 7746 | sanet@revet.co.za

Trading Hours:

Monday - Friday 07h00 - 17h00
Saturday 08h30 - 13h00